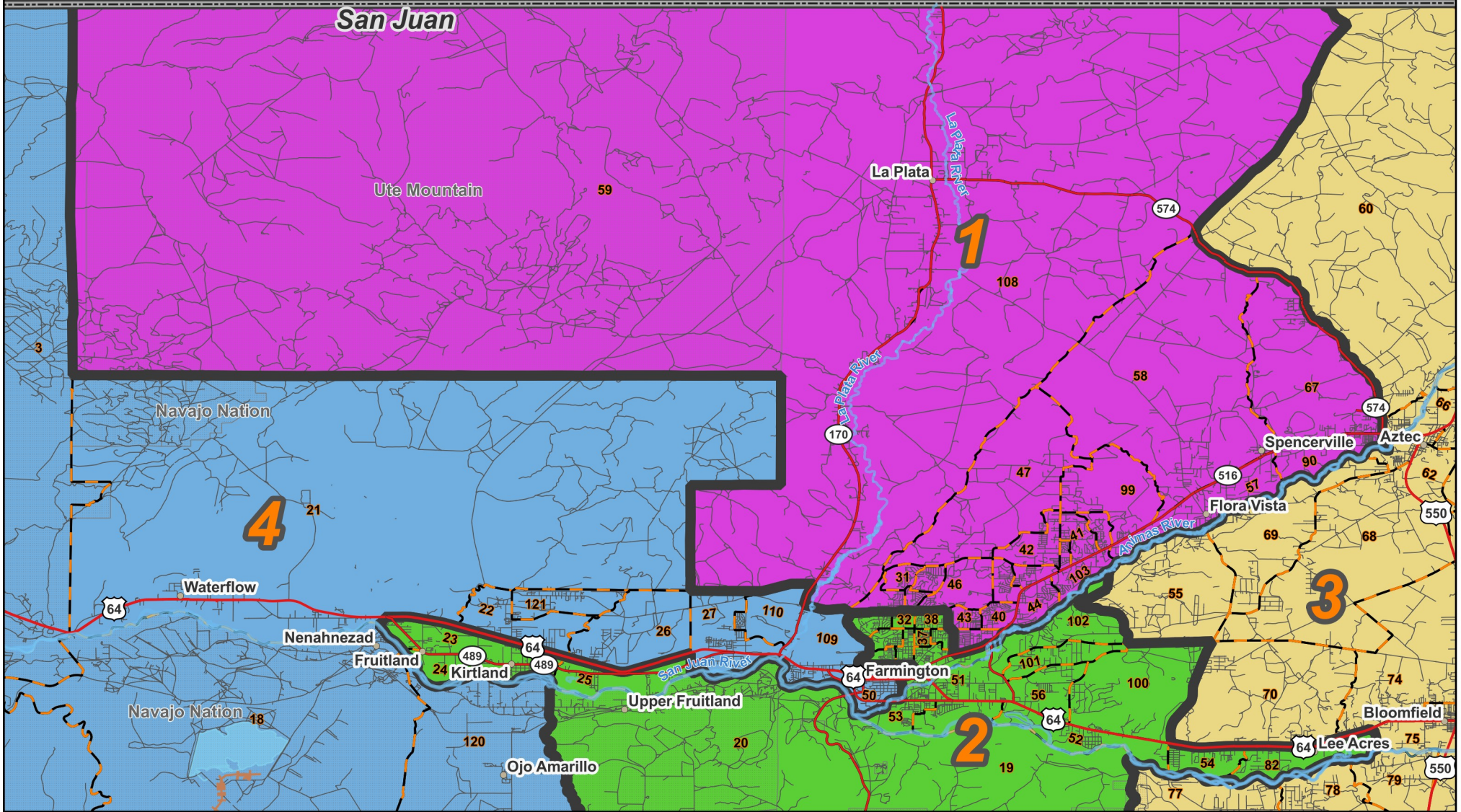
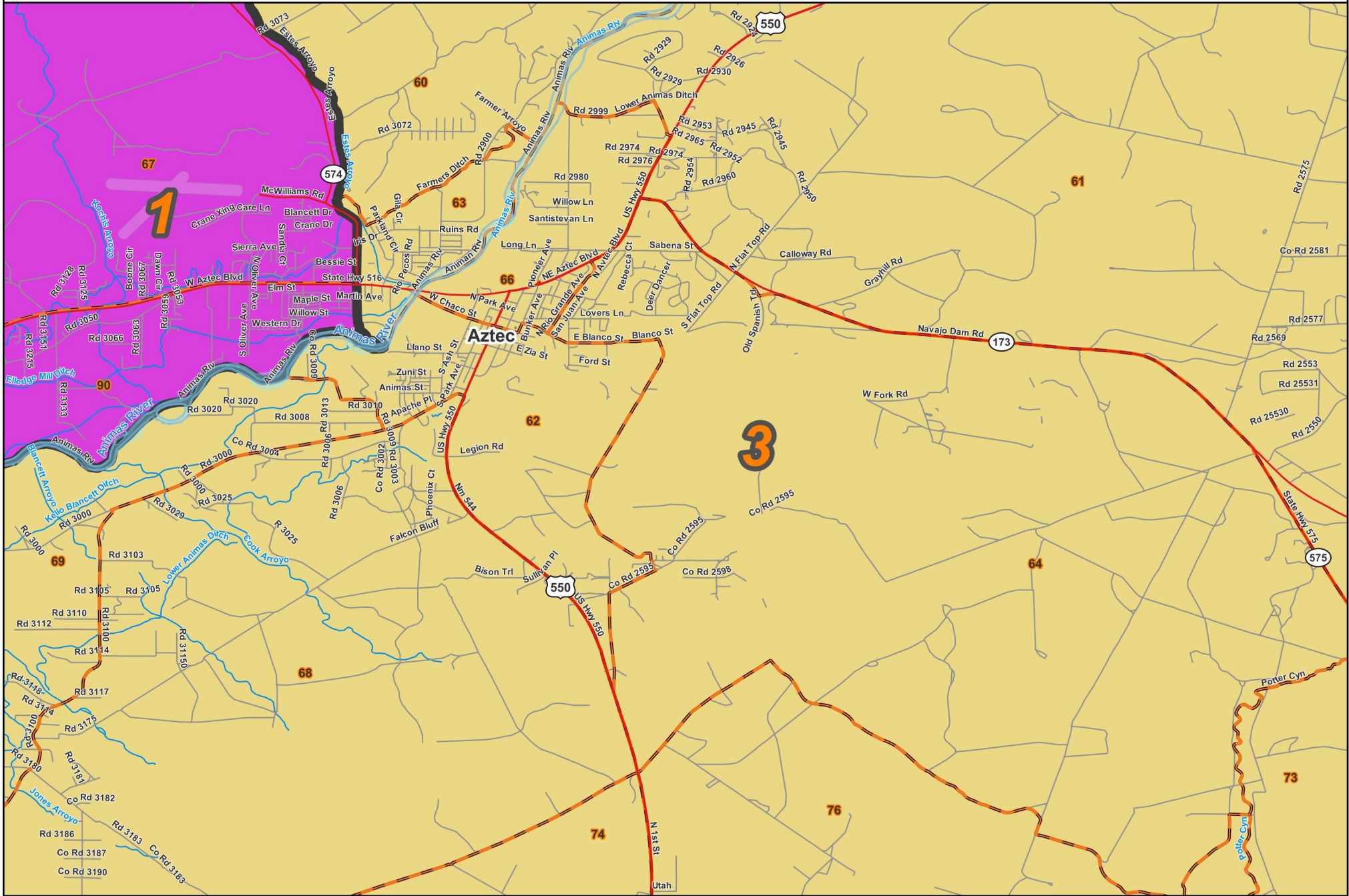


State House: District 1



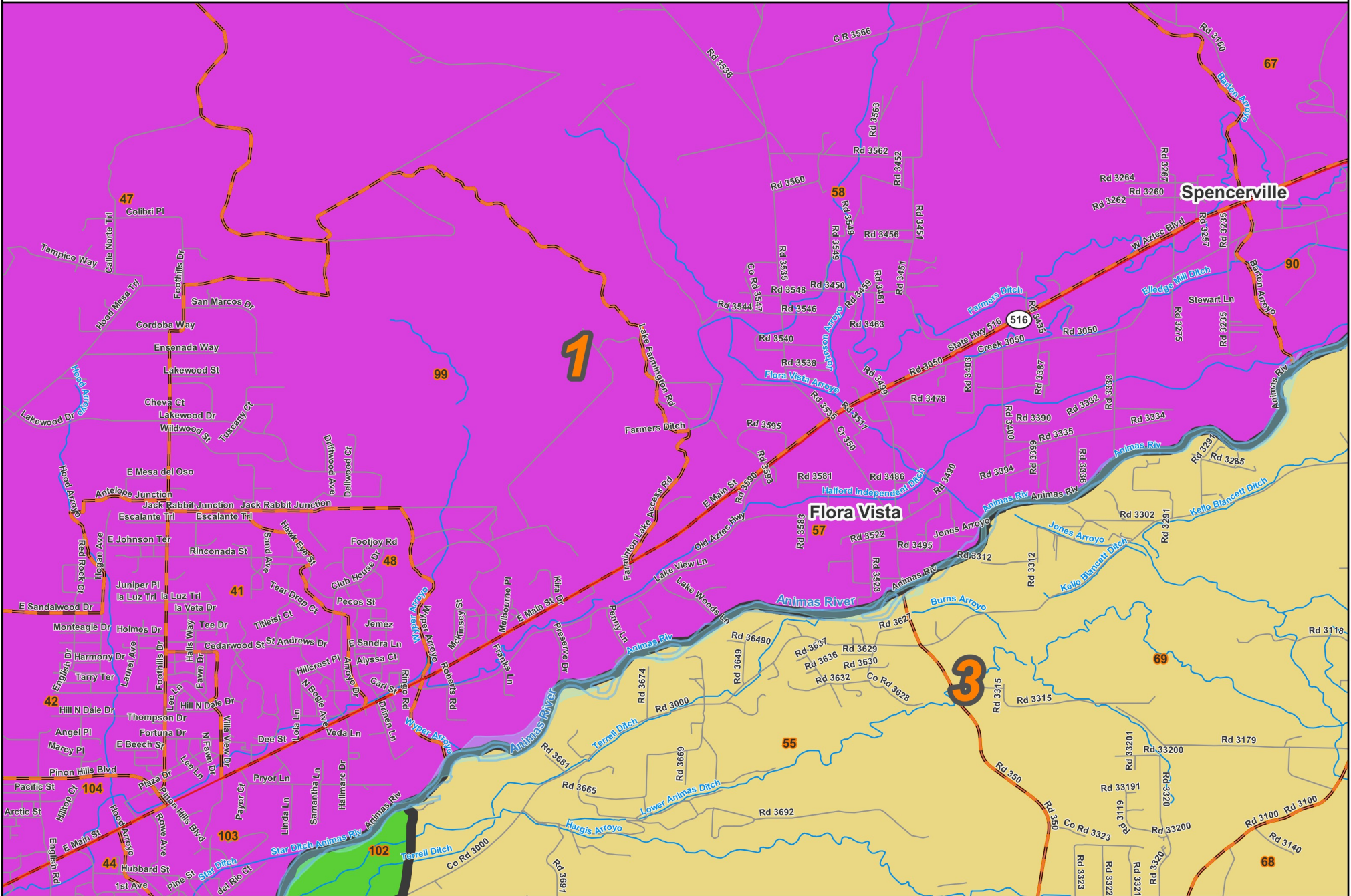


Prepared for the New Mexico Legislative Council Service



Legend:
Precincts (orange outline)
Counties (grey outline)
Nat. Amer. lands (dotted pattern)

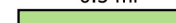
06/16/2023



Prepared for the New Mexico Legislative Council Service



0.5 mi



- Precincts
- Nat. Amer. lands
- Counties

06/16/2023

County / Precinct	Total Population	Adult Hispanic	Adult Non-Hispanic				
			White	Native American	Black	Asian	Other
SJ 31	678	14.5%	78.0%	1.2%	0.0%	3.4%	3.0%
SJ 39	1,165	14.6%	70.6%	7.4%	0.8%	2.3%	4.2%
SJ 40	1,530	22.2%	47.2%	24.3%	0.7%	0.3%	5.3%
SJ 41	1,212	13.7%	77.6%	2.9%	0.8%	1.3%	3.8%
SJ 42	1,154	19.2%	66.2%	9.4%	0.6%	1.1%	3.6%
SJ 43	1,378	20.1%	45.0%	29.4%	0.1%	0.6%	4.8%
SJ 44	1,456	25.8%	43.2%	24.6%	0.7%	0.7%	4.9%
SJ 45	2,132	23.7%	34.9%	36.0%	0.7%	1.2%	3.5%
SJ 46	1,405	15.8%	59.9%	19.3%	1.1%	0.2%	3.6%
SJ 47	867	12.9%	71.9%	8.3%	0.6%	0.9%	5.3%
SJ 48	703	19.0%	67.2%	7.9%	0.2%	1.8%	3.8%
SJ 49	1,424	19.9%	53.8%	19.3%	0.2%	2.7%	4.1%
SJ 57	1,402	15.3%	74.1%	5.9%	0.0%	0.2%	4.6%
SJ 58	1,238	21.9%	65.6%	7.3%	0.1%	0.3%	4.9%
SJ 59	1,166	12.6%	70.6%	10.3%	0.6%	0.3%	5.7%
SJ 67	1,922	24.9%	58.9%	10.8%	0.1%	0.6%	4.5%
SJ 90	1,043	24.7%	60.8%	7.4%	0.1%	1.0%	5.9%
SJ 99	661	15.7%	72.4%	8.5%	0.2%	0.8%	2.4%
SJ 103	1,381	21.0%	65.1%	8.5%	0.8%	1.4%	3.2%
SJ 104	977	19.4%	57.0%	15.4%	1.0%	2.4%	4.8%
SJ 106	954	15.8%	56.4%	18.7%	1.0%	2.4%	5.8%
SJ 107	1,348	16.2%	70.2%	6.4%	0.8%	0.7%	5.6%
SJ 108	966	14.5%	68.3%	12.3%	0.3%	0.6%	4.0%
District Total	28,162	19.0%	60.5%	14.4%	0.5%	1.1%	4.4%