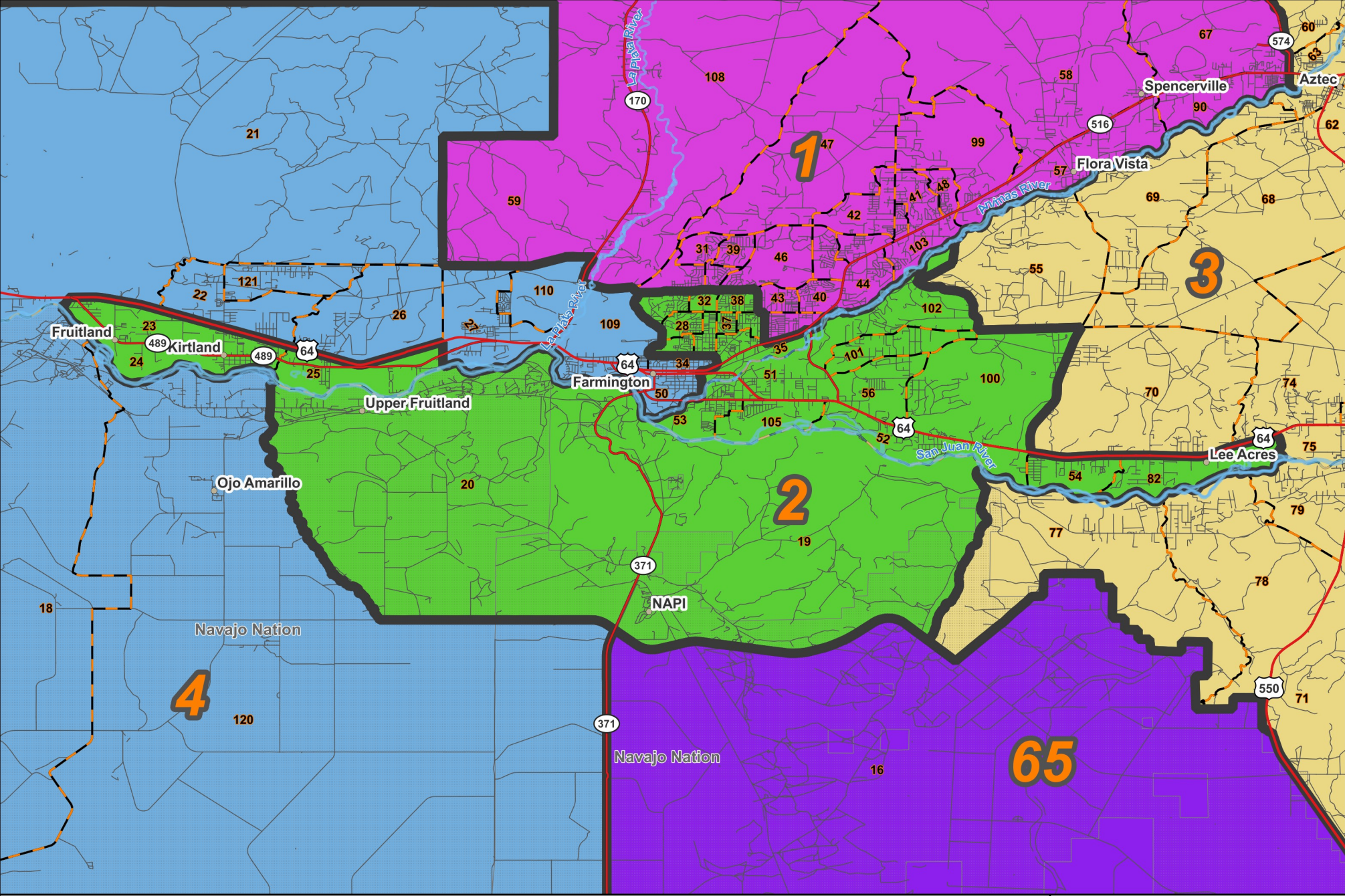


State House: District 2



Prepared for the New Mexico Legislative Council Service

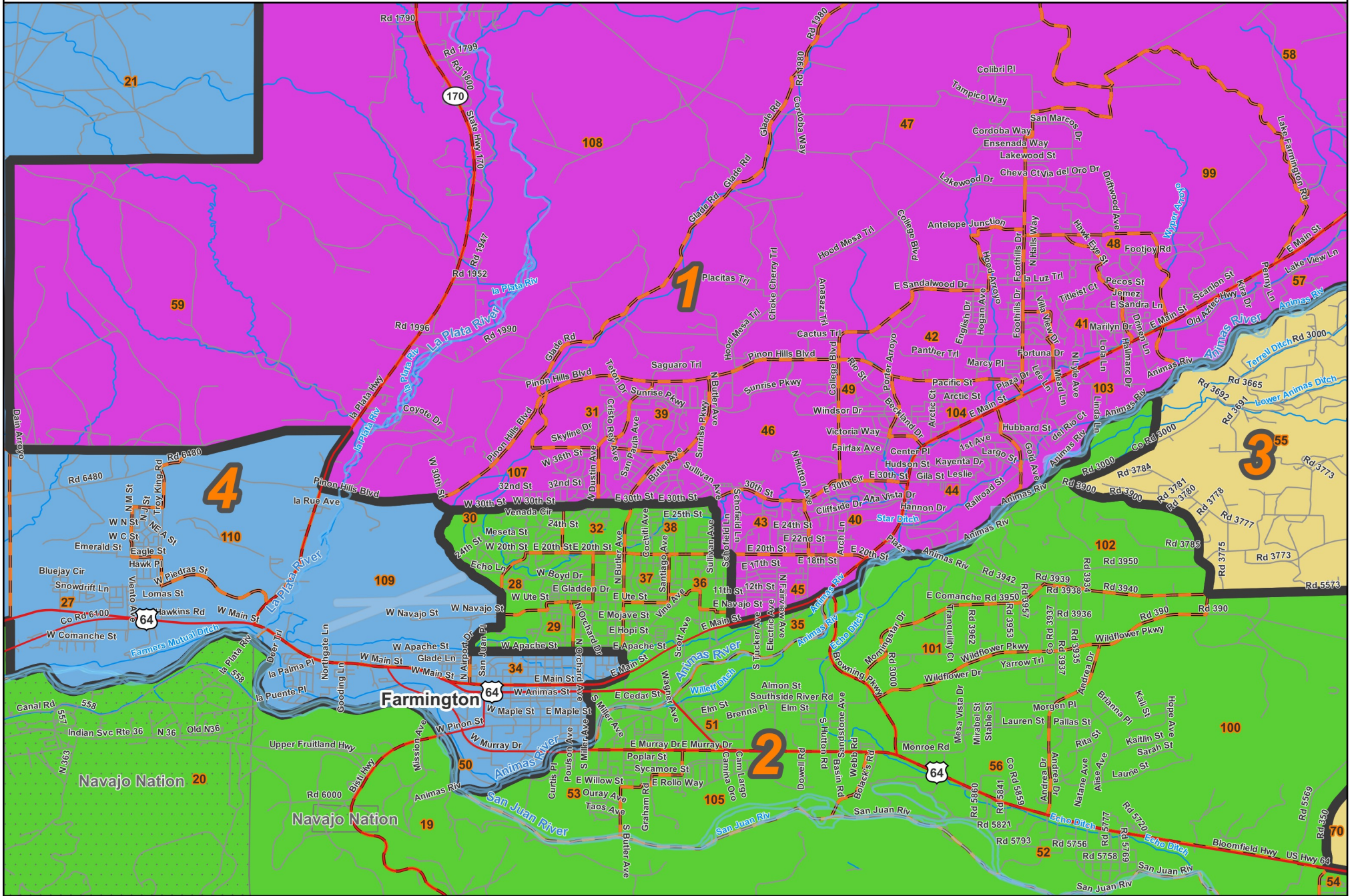


 Precincts
 Nat. Amer. Lands
 Counties

06/26/2023

State House: District 2

Farmington

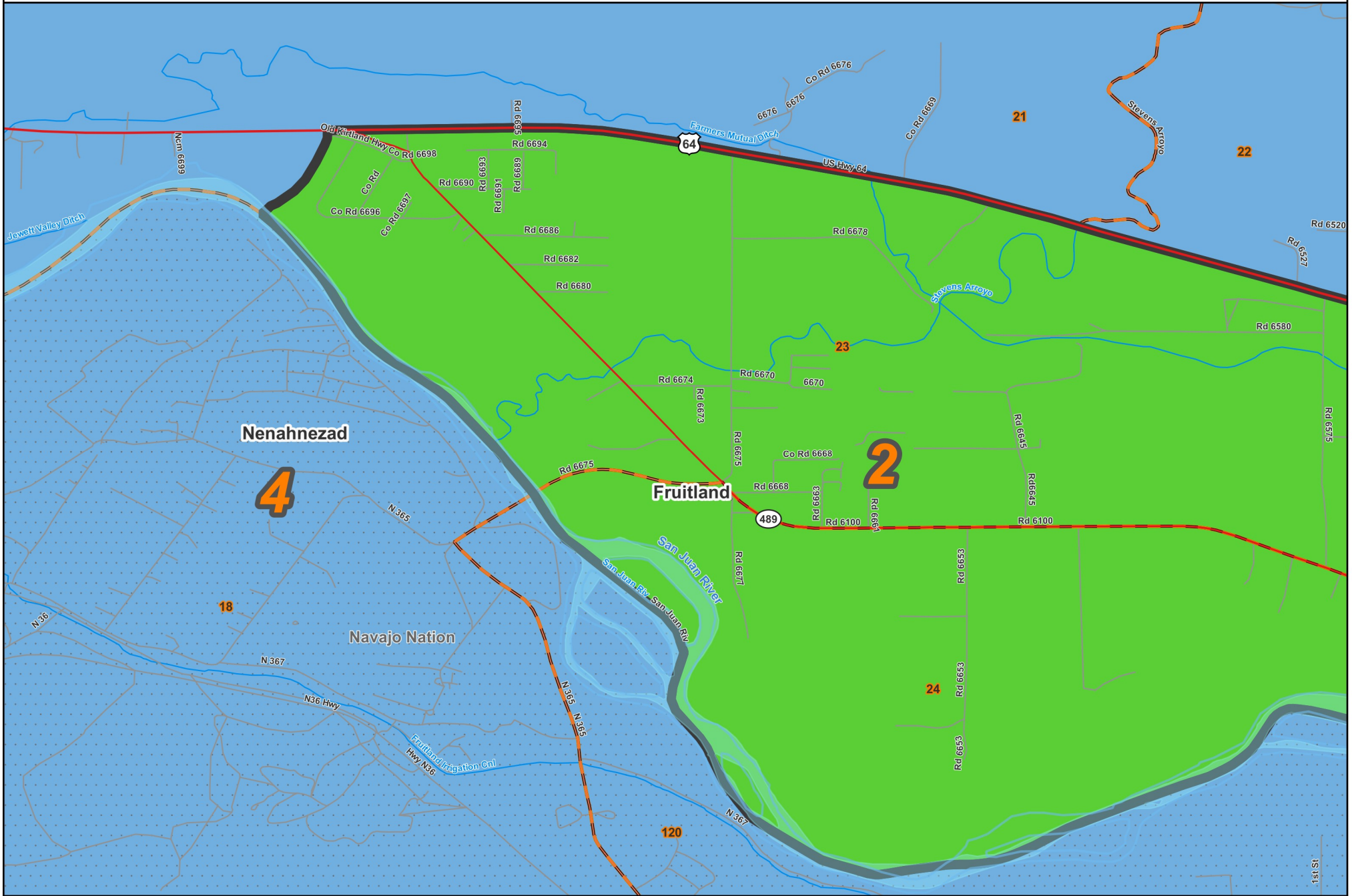


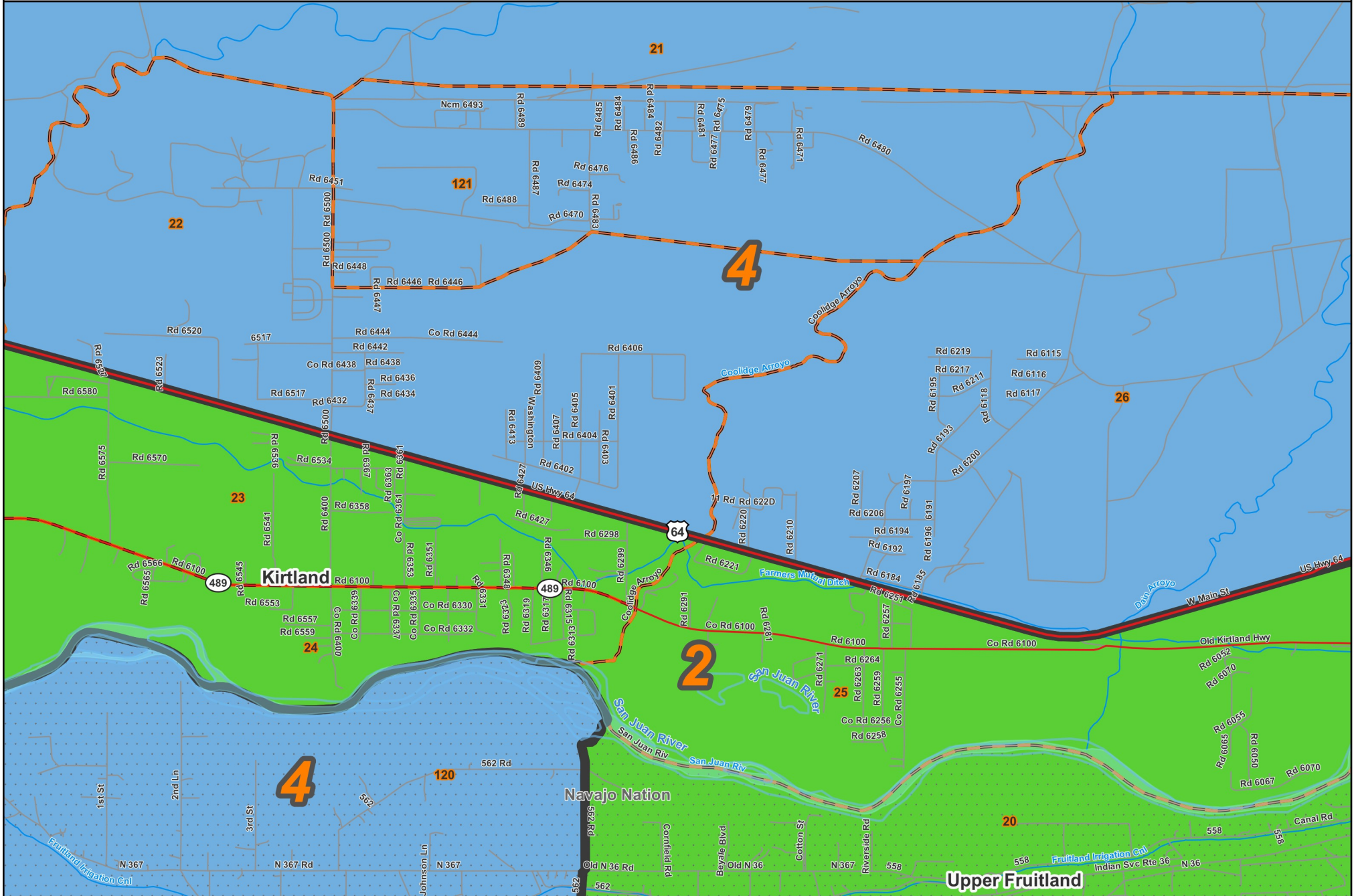
Prepared for the New Mexico Legislative Council Service



- ▭ Precincts
- ▭ Nat. Amer. lands
- ▭ Counties

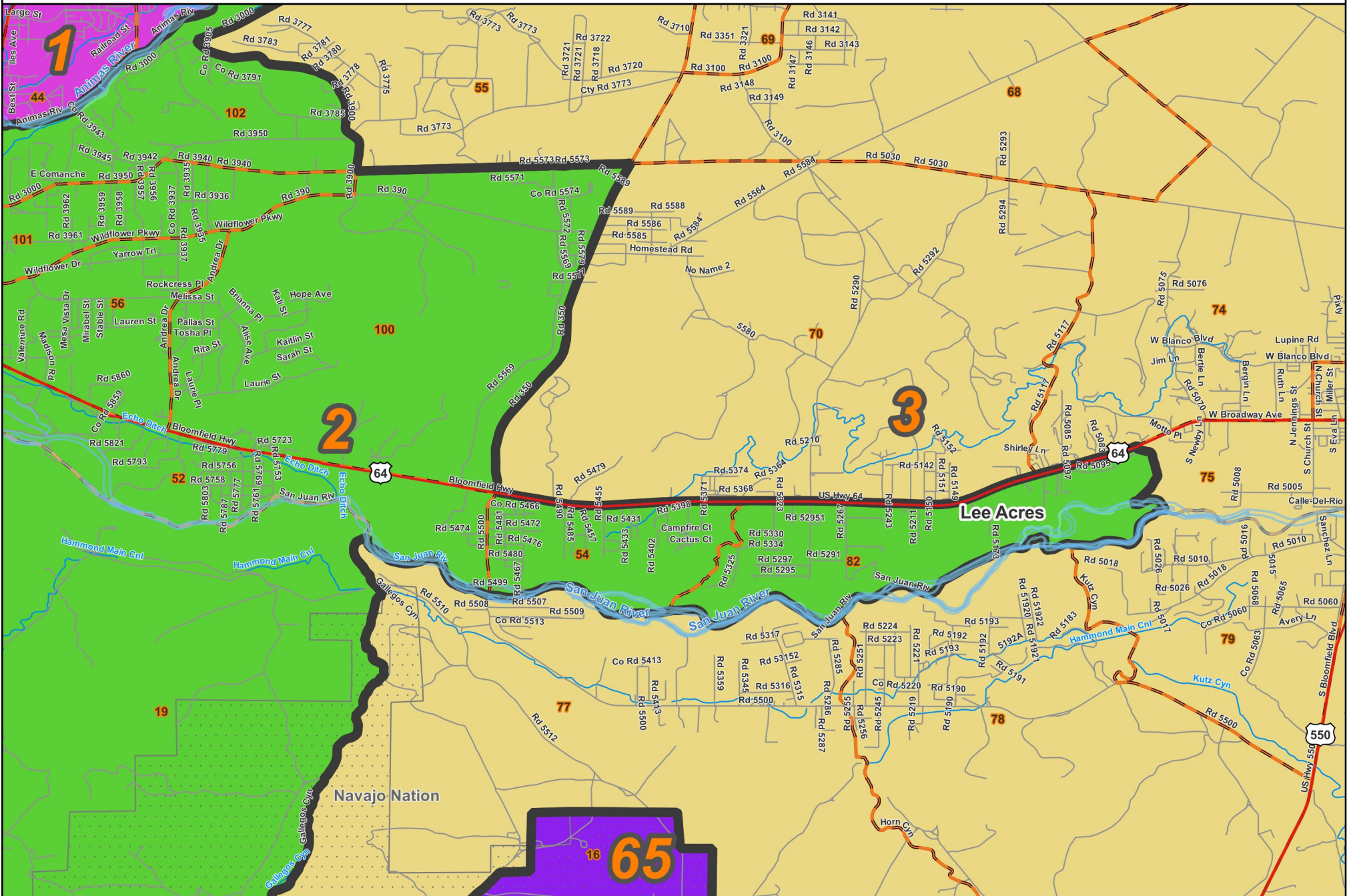
06/16/2023



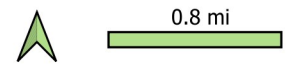


State House: District 2

Lee Acres

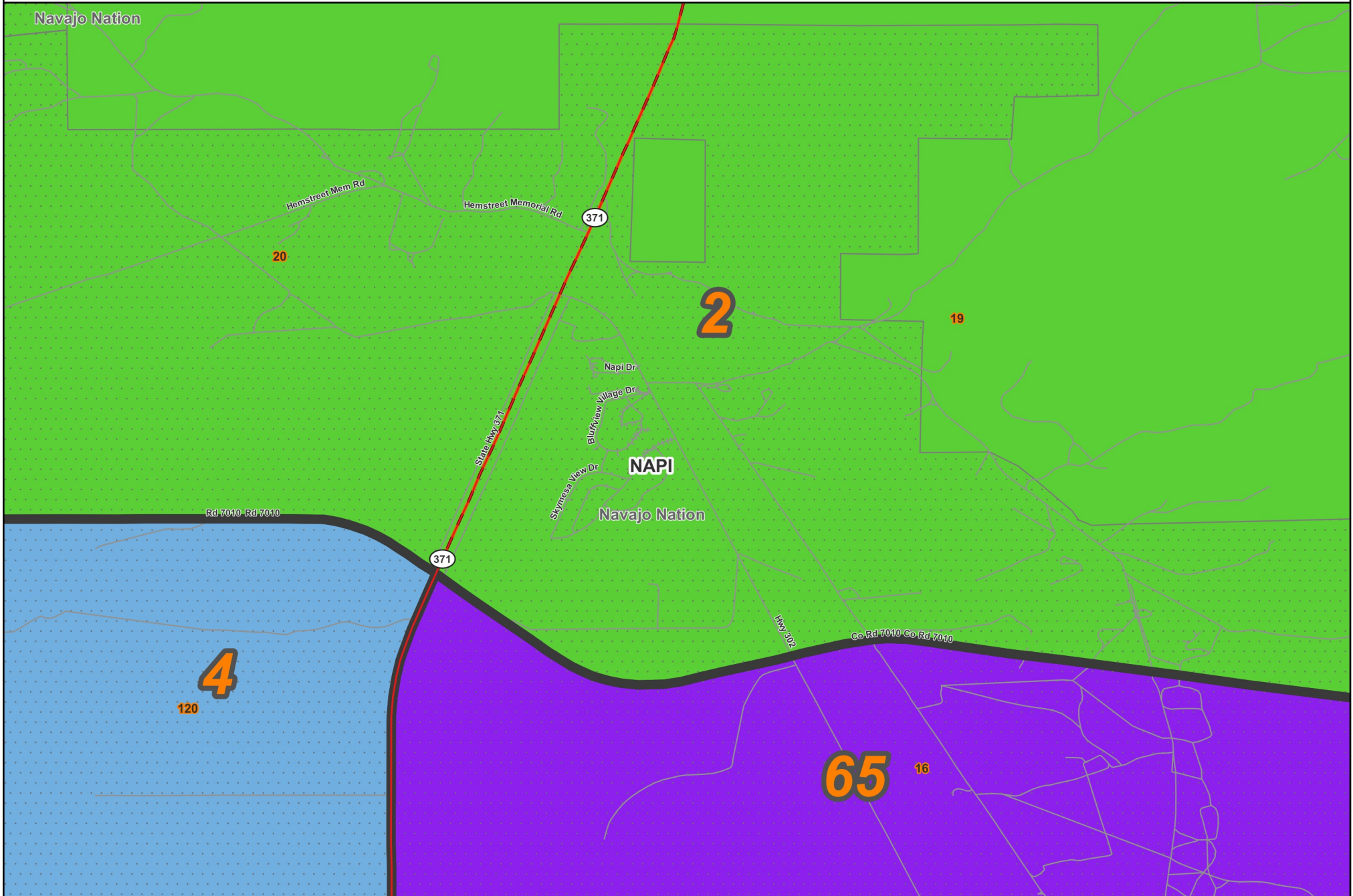


Prepared for the New Mexico Legislative Council Service



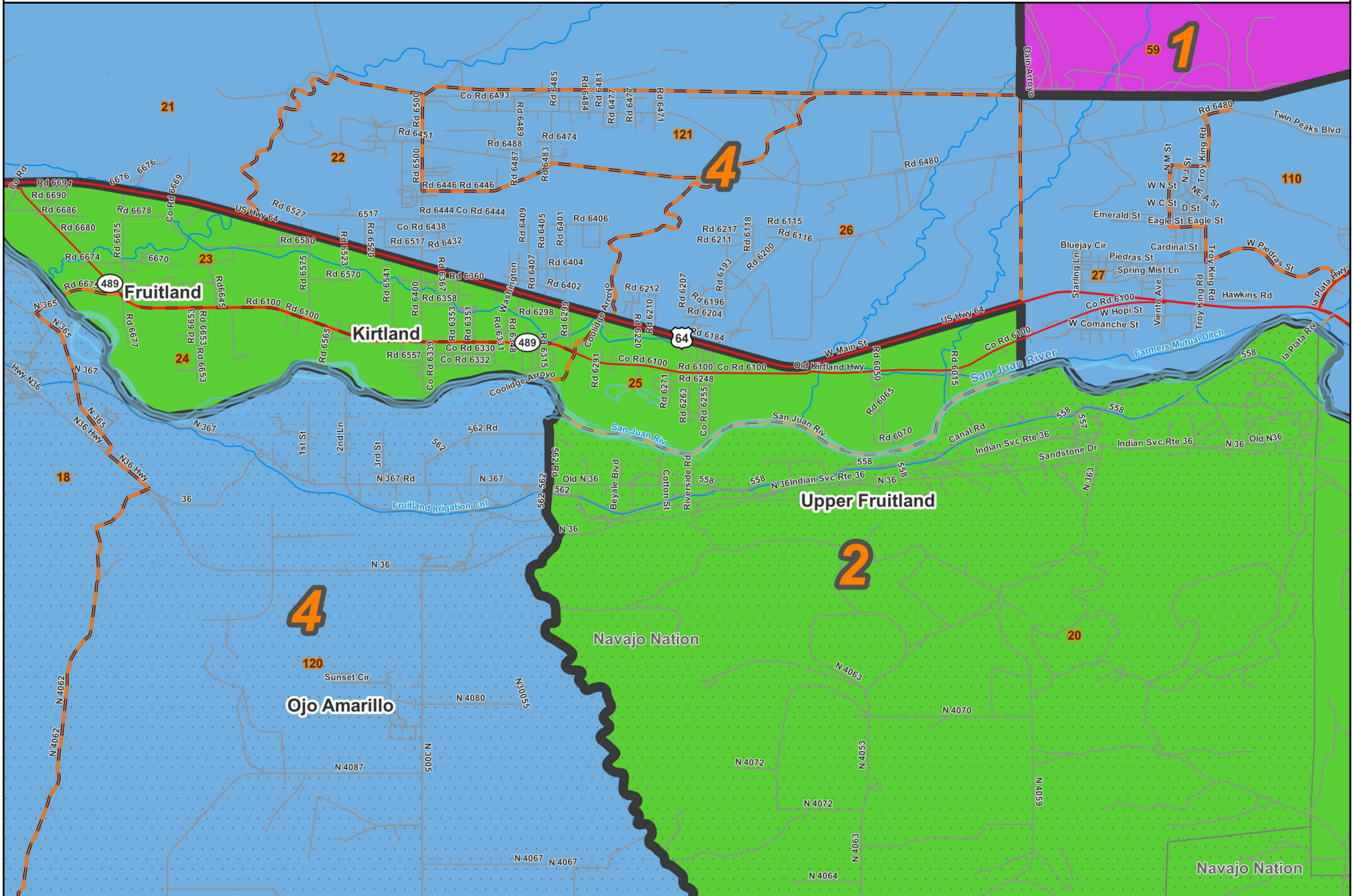
- Precincts
- Nat. Amer. lands
- Counties

06/16/2023



State House: District 2

Upper Fruitland



Prepared for the New Mexico Legislative Council Service



Legend:
Precincts (orange outline)
Counties (grey outline)
Nat. Amer. lands (dotted pattern)

06/16/2023

County / Precinct	Total Population	Adult Hispanic	Adult Non-Hispanic				
			White	Native American	Black	Asian	Other
SJ 19	806	1.0%	1.1%	93.3%	0.0%	0.2%	4.4%
SJ 20	1,156	1.4%	1.4%	95.0%	0.0%	0.0%	2.3%
SJ 23	1,422	8.5%	41.8%	45.2%	0.2%	1.0%	3.3%
SJ 24	834	13.0%	47.8%	33.8%	0.5%	0.8%	4.1%
SJ 25	1,021	11.5%	50.1%	32.9%	0.8%	0.1%	4.6%
SJ 28	1,059	19.3%	61.1%	11.9%	2.3%	0.8%	4.6%
SJ 29	982	15.7%	51.1%	26.7%	1.1%	1.3%	4.2%
SJ 30	1,395	14.7%	67.0%	11.8%	0.5%	1.5%	4.6%
SJ 32	927	10.8%	34.0%	48.6%	0.3%	3.1%	3.2%
SJ 33	1,531	16.8%	43.0%	32.7%	1.6%	1.0%	5.0%
SJ 35	1,406	19.1%	42.4%	31.6%	1.4%	2.2%	3.4%
SJ 36	935	24.4%	53.5%	17.5%	0.8%	0.4%	3.3%
SJ 37	1,026	19.0%	56.5%	18.8%	0.3%	0.1%	5.4%
SJ 38	1,756	18.5%	51.6%	23.5%	0.9%	1.7%	3.7%
SJ 51	1,917	35.3%	30.5%	30.6%	0.6%	0.4%	2.7%
SJ 52	945	34.5%	44.3%	13.5%	1.5%	0.0%	6.2%
SJ 53	1,420	37.9%	23.9%	35.1%	0.7%	0.3%	2.0%
SJ 54	1,404	41.1%	35.3%	20.3%	1.3%	0.0%	2.0%
SJ 56	1,631	22.6%	35.0%	37.7%	0.2%	0.8%	3.7%
SJ 82	661	29.0%	53.3%	14.5%	0.2%	0.0%	3.0%
SJ 100	1,226	27.4%	34.5%	34.7%	0.1%	0.5%	2.8%
SJ 101	1,049	32.9%	23.4%	41.0%	0.0%	0.3%	2.4%
SJ 102	639	22.8%	49.5%	24.5%	0.0%	0.0%	3.2%
SJ 105	1,089	24.2%	56.1%	16.7%	0.5%	0.1%	2.4%
District Total	28,237	21.5%	41.0%	32.5%	0.7%	0.7%	3.6%