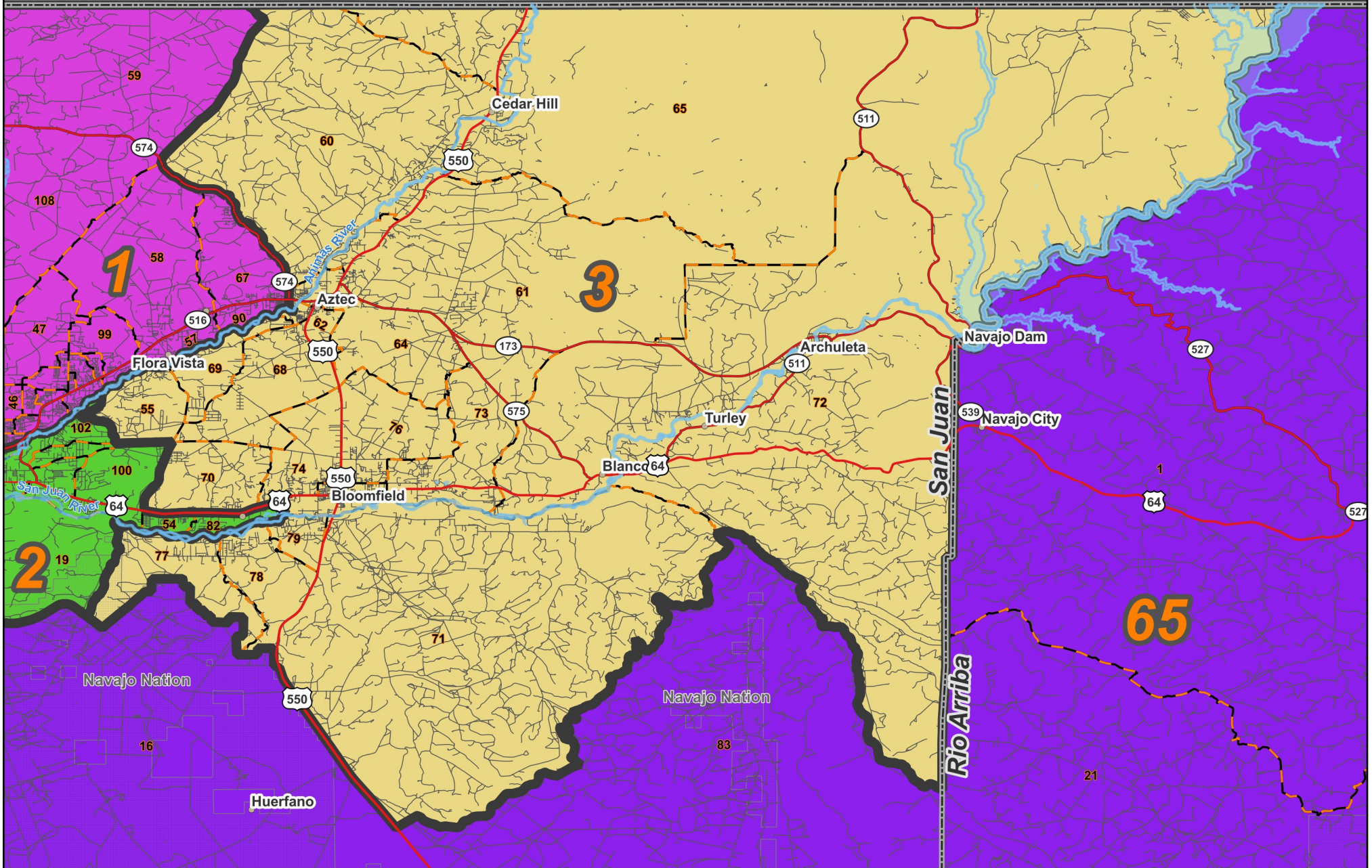
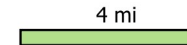


# State House: District 3



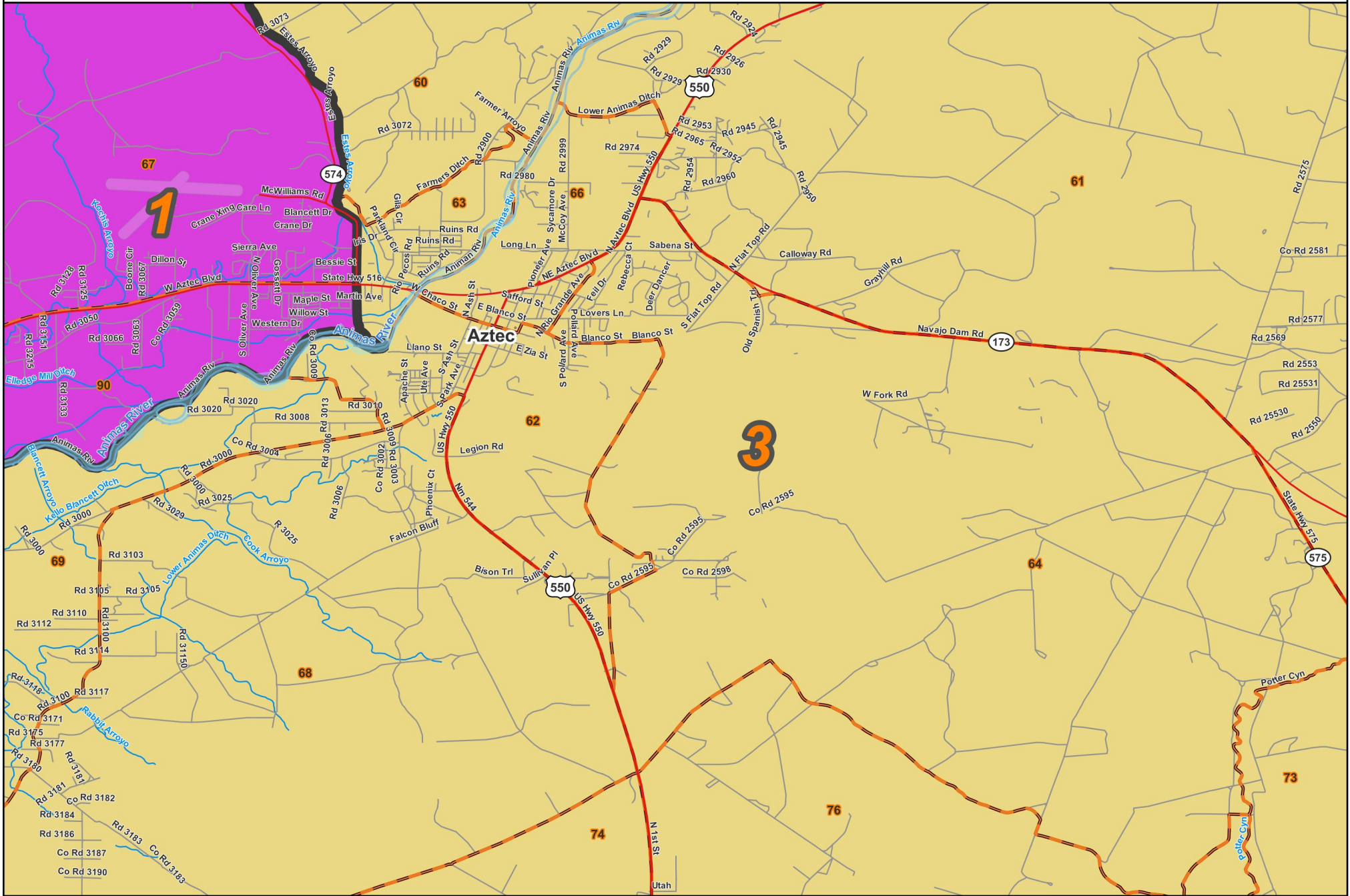
Prepared for the New Mexico Legislative Council Service



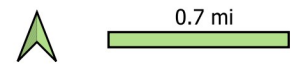
Legend:  
Precincts (orange outline)  
Counties (black outline)  
Nat. Amer. Lands (grey hatched)

06/26/2023





Prepared for the New Mexico Legislative Council Service



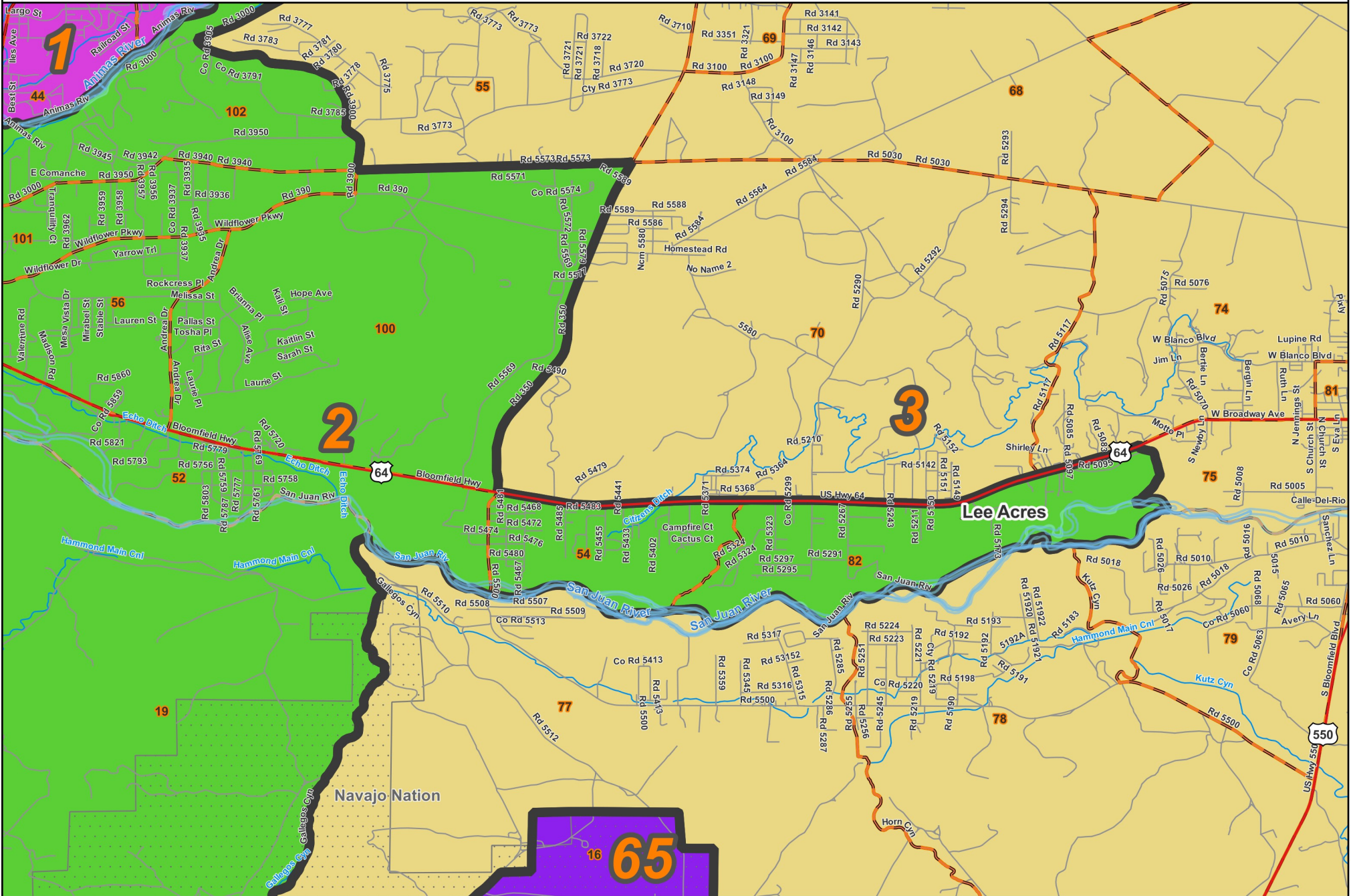
Legend:  
Precincts (orange outline)  
Counties (grey outline)  
Nat. Amer. lands (dotted pattern)

06/18/2023

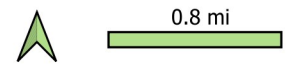


# State House: District 3

# Lee Acres



Prepared for the New Mexico Legislative Council Service



Legend:  
Precincts (orange outline)  
Counties (grey outline)  
Nat. Amer. lands (dotted pattern)

06/18/2023

County / Precinct	Total Population	Adult Hispanic	Adult Non-Hispanic				
			White	Native American	Black	Asian	Other
SJ 55	1,234	19.0%	61.5%	16.6%	0.0%	0.0%	2.8%
SJ 60	1,341	16.1%	77.3%	3.1%	0.4%	0.5%	2.7%
SJ 61	1,443	15.2%	75.8%	3.6%	0.0%	0.5%	4.9%
SJ 62	1,358	20.3%	61.8%	8.5%	0.6%	0.9%	7.9%
SJ 63	1,222	19.6%	62.3%	15.0%	0.0%	0.5%	2.6%
SJ 64	1,057	20.8%	69.5%	6.0%	0.1%	0.1%	3.5%
SJ 65	1,058	11.0%	79.6%	4.1%	0.1%	0.4%	4.8%
SJ 66	929	23.4%	65.1%	4.5%	0.3%	0.8%	6.0%
SJ 68	1,777	27.0%	52.7%	14.9%	0.4%	0.6%	4.4%
SJ 69	1,637	22.0%	56.9%	17.5%	0.3%	0.2%	3.1%
SJ 70	1,450	29.8%	47.8%	20.8%	0.3%	0.3%	1.0%
SJ 71	569	14.7%	72.4%	9.7%	0.5%	0.0%	2.8%
SJ 72	1,385	36.7%	54.8%	2.8%	0.0%	0.2%	5.5%
SJ 73	1,290	51.8%	39.7%	5.0%	0.0%	0.4%	3.1%
SJ 74	1,908	27.0%	46.3%	21.8%	0.6%	1.5%	2.8%
SJ 75	1,548	31.2%	39.0%	25.3%	0.6%	0.6%	3.4%
SJ 76	1,665	29.8%	45.5%	18.9%	0.1%	1.4%	4.3%
SJ 77	948	33.7%	52.5%	11.7%	0.4%	0.0%	1.6%
SJ 78	1,106	27.5%	58.8%	9.8%	0.4%	0.2%	3.3%
SJ 79	1,119	25.9%	44.7%	26.6%	0.2%	0.2%	2.3%
SJ 80	1,517	29.1%	41.6%	26.5%	0.1%	0.3%	2.4%
SJ 81	762	27.4%	55.3%	13.3%	0.4%	0.9%	2.7%
<b>District Total</b>	<b>28,323</b>	<b>25.8%</b>	<b>56.4%</b>	<b>13.4%</b>	<b>0.3%</b>	<b>0.5%</b>	<b>3.6%</b>