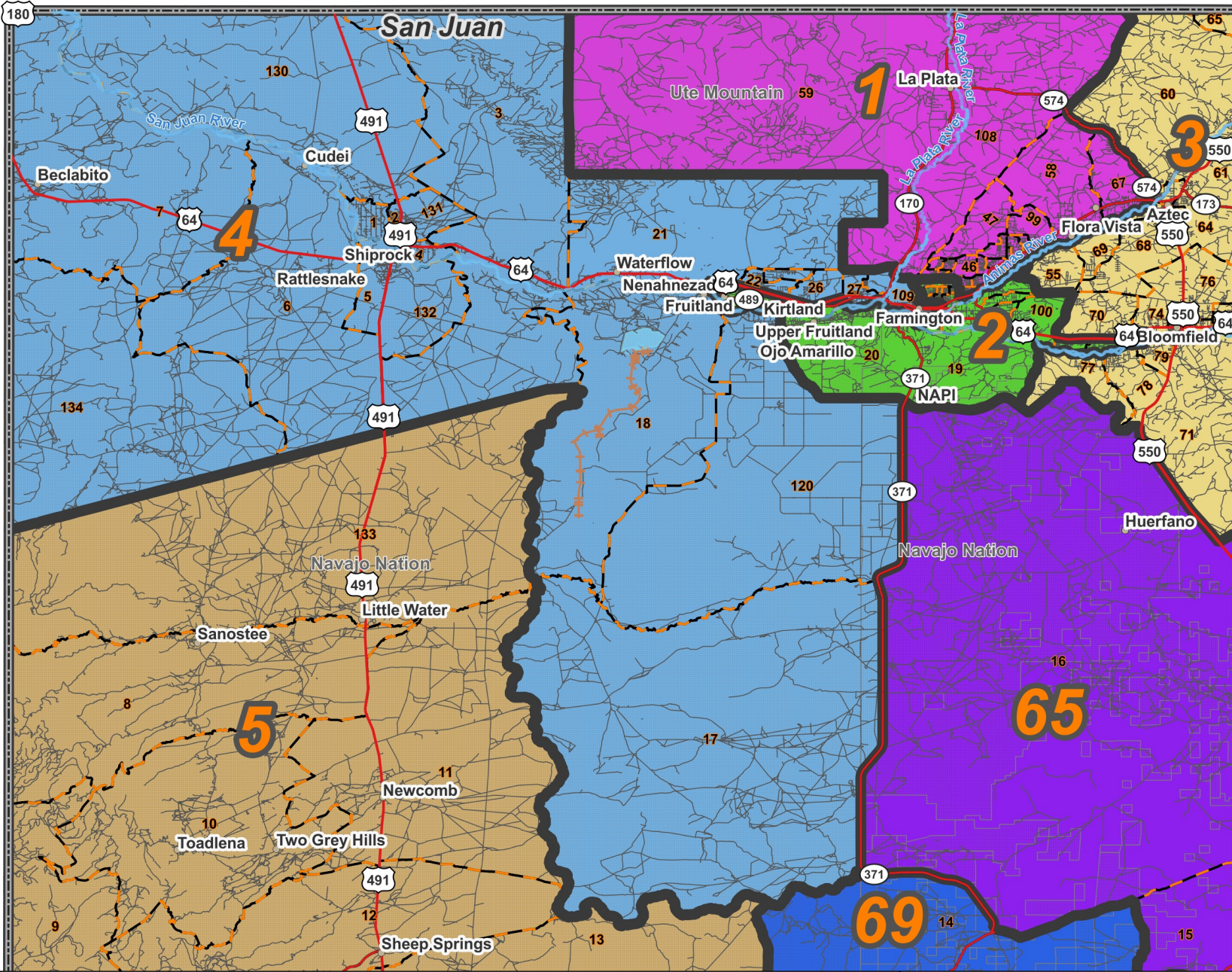


# State House: District 4



Prepared for the New Mexico Legislative Council Service



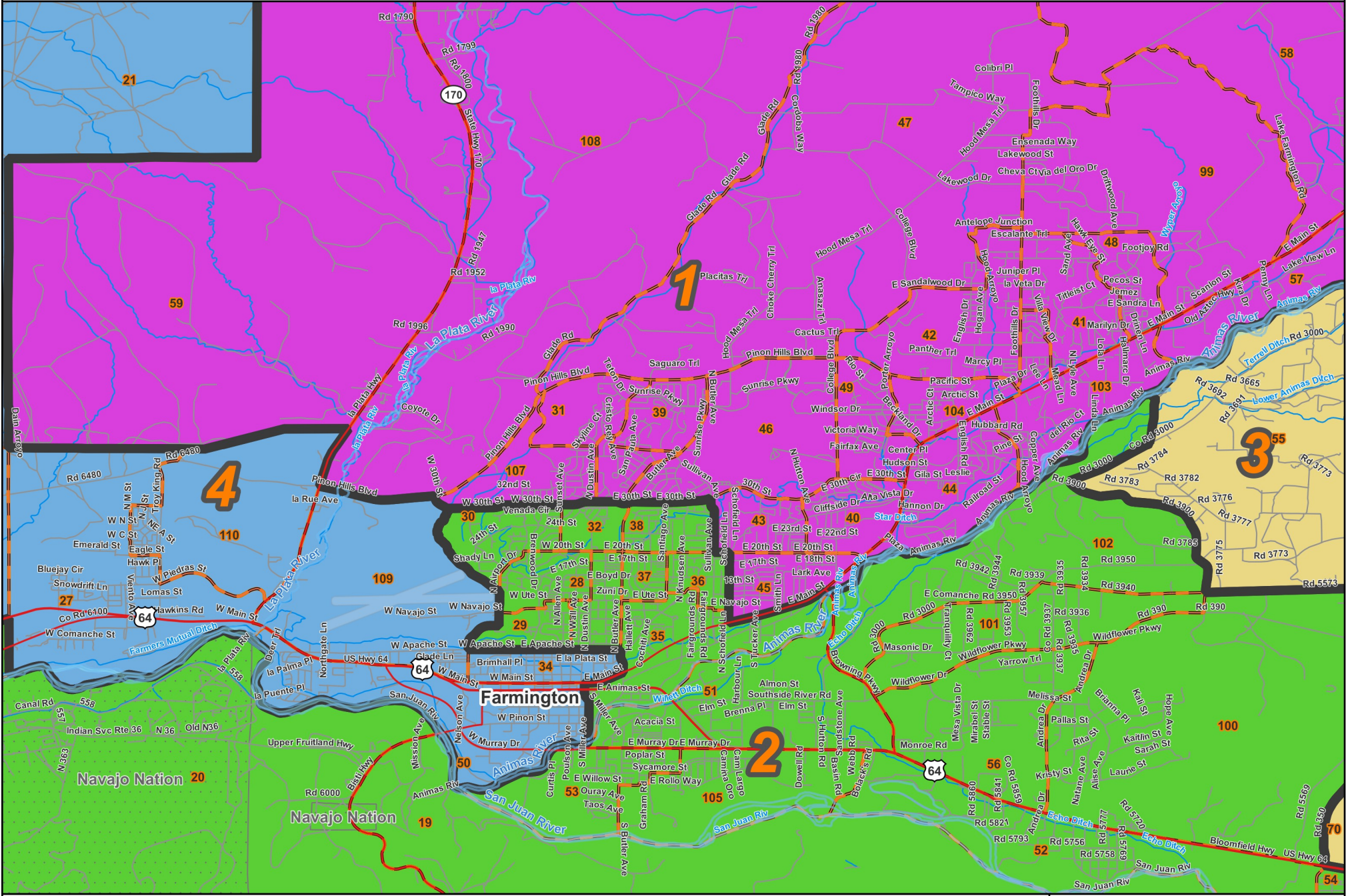
  Precincts  
   Nat. Amer. Lands  
  Counties

06/26/2023



# State House: District 4

# Farmington



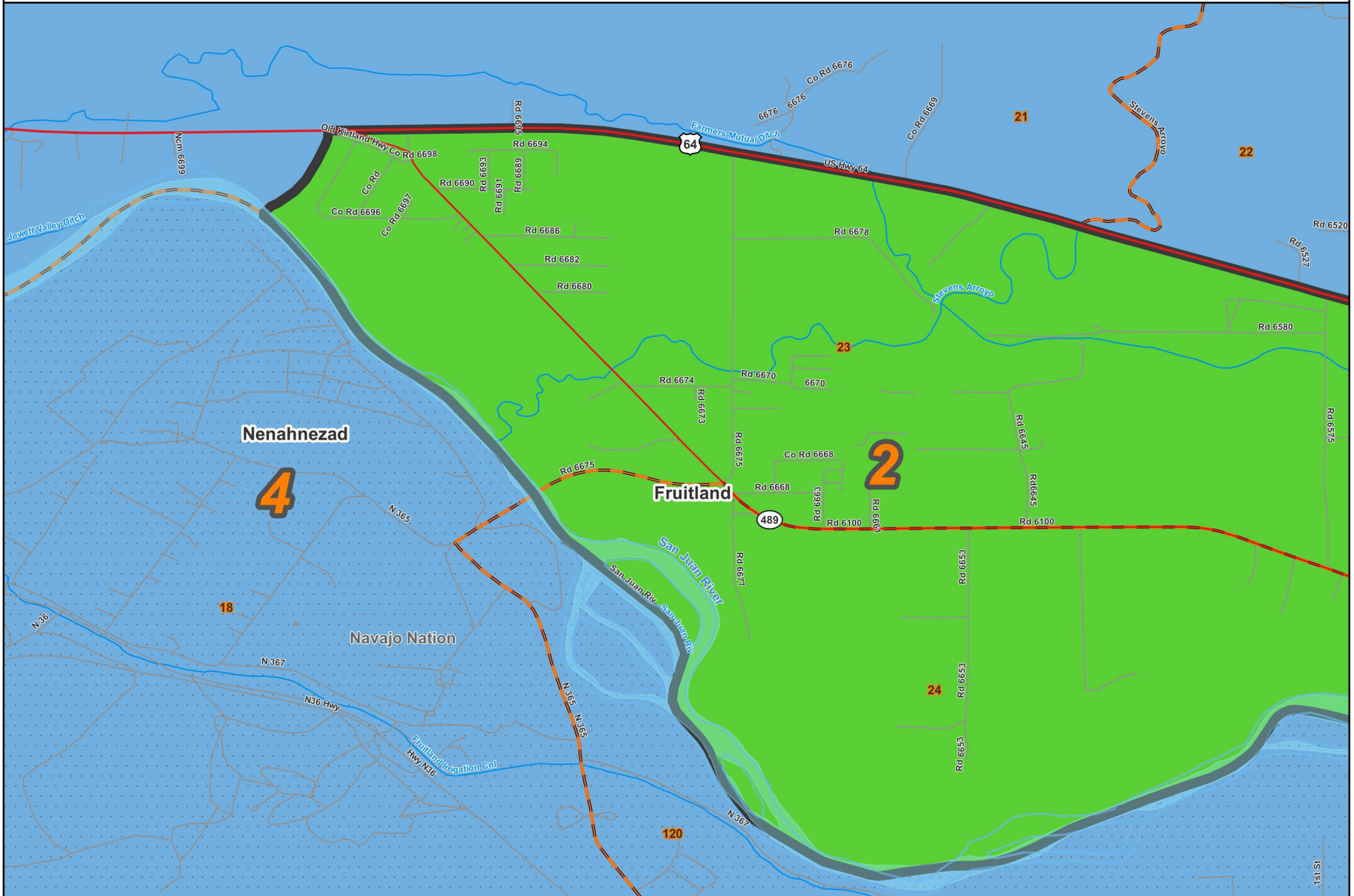
Prepared for the New Mexico Legislative Council Service

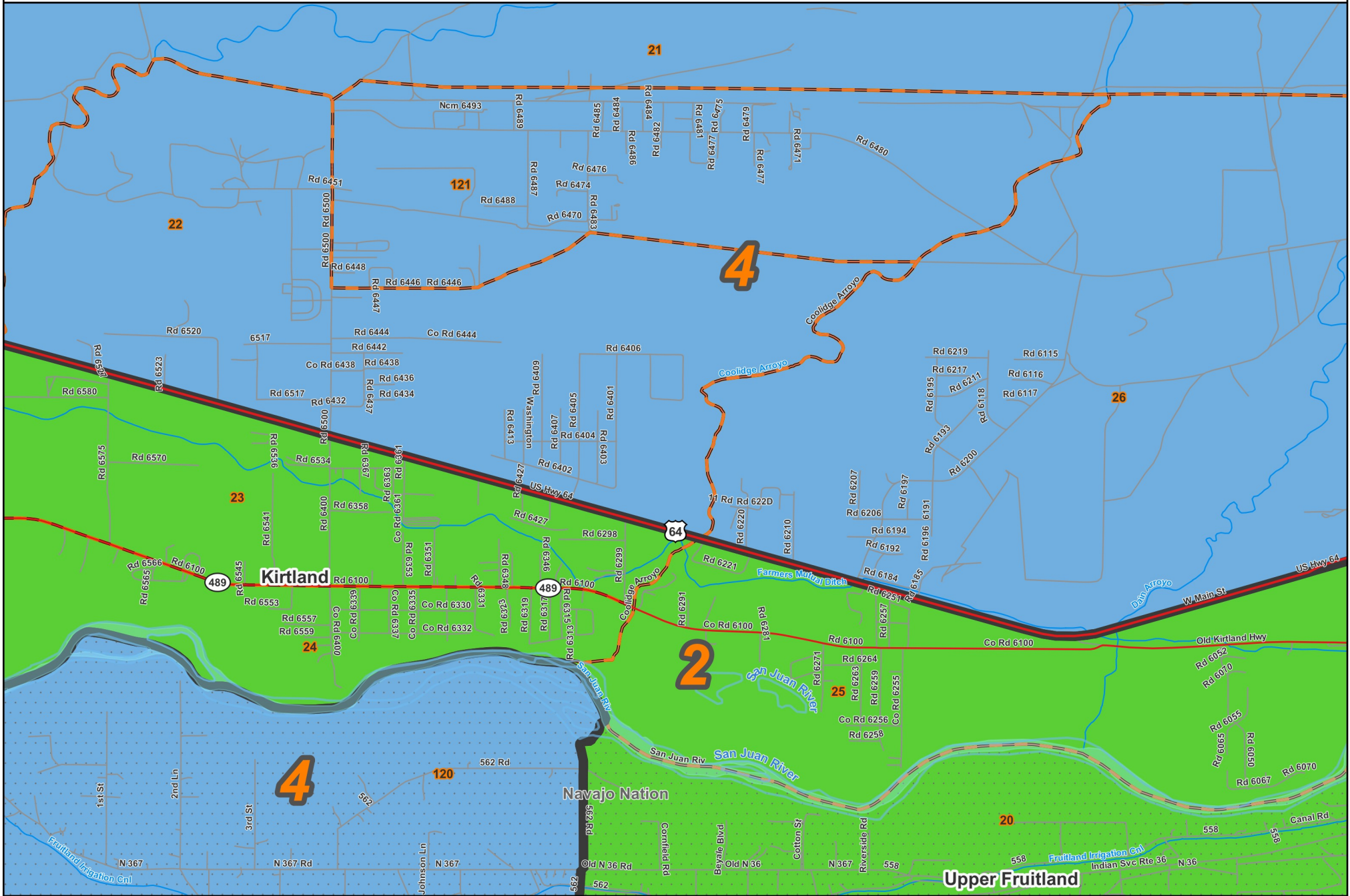


- Precincts
- Nat. Amer. lands
- Counties

06/18/2023







Prepared for the New Mexico Legislative Council Service



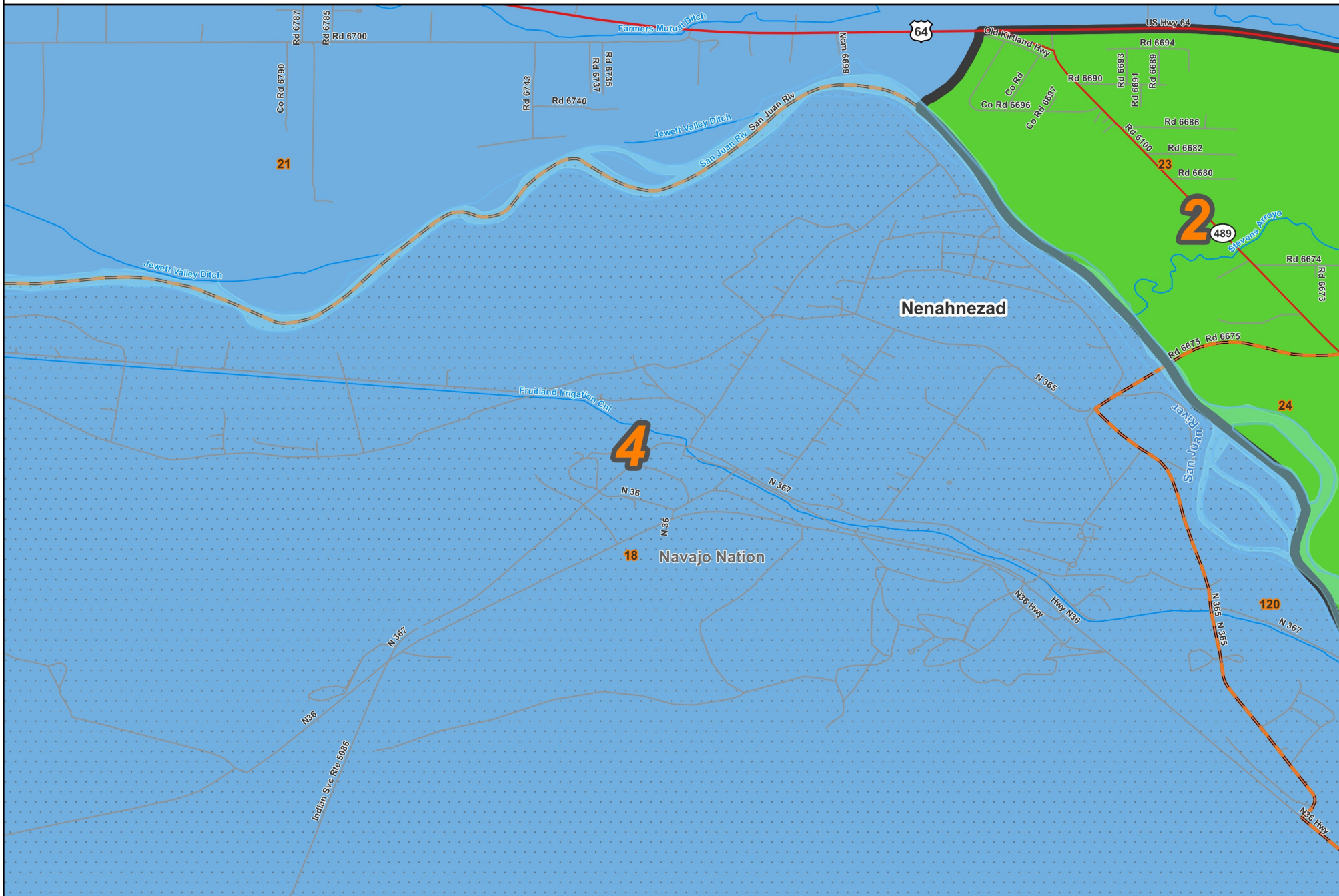
- Precincts
- Nat. Amer. lands
- Counties

06/18/2023



# State House: District 4

# Nenahnezad



Prepared for the New Mexico Legislative Council Service



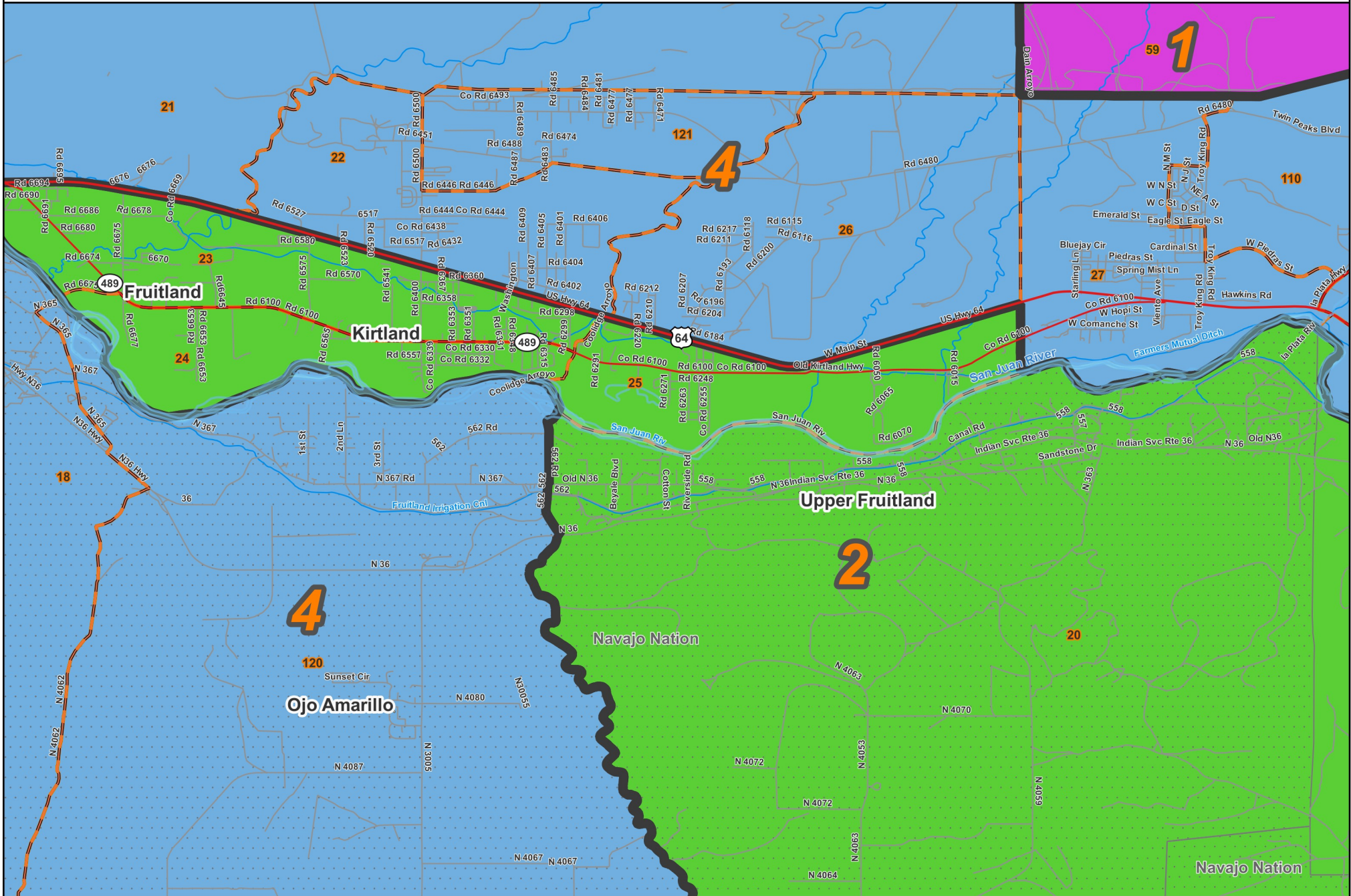
- Precincts
- Nat. Amer. lands
- Counties

06/18/2023

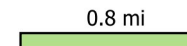


# State House: District 4

# Upper Fruitland



Prepared for the New Mexico Legislative Council Service



-  Precincts
-  Nat. Amer. lands
-  Counties

06/18/2023



County / Precinct	Total Population	Adult Hispanic	Adult Non-Hispanic				
			White	Native American	Black	Asian	Other
SJ 1	1,038	2.5%	1.1%	94.3%	0.0%	0.7%	1.4%
SJ 2	1,843	1.3%	2.1%	94.9%	0.0%	1.3%	0.4%
SJ 3	1,321	1.0%	0.9%	96.4%	0.0%	0.0%	1.7%
SJ 4	1,788	0.8%	1.4%	96.4%	0.3%	0.5%	0.6%
SJ 5	1,679	1.6%	1.1%	95.1%	0.2%	1.0%	1.1%
SJ 6	512	0.7%	1.0%	98.3%	0.0%	0.0%	0.0%
SJ 7	468	1.6%	1.3%	96.8%	0.0%	0.0%	0.3%
SJ 17	219	0.6%	0.0%	98.2%	0.0%	1.2%	0.0%
SJ 18	1,298	1.6%	0.9%	95.3%	0.0%	0.1%	2.1%
SJ 21	1,624	6.2%	35.3%	53.7%	0.3%	1.0%	3.5%
SJ 22	1,548	11.6%	17.9%	66.7%	0.4%	0.6%	2.7%
SJ 26	1,005	8.9%	15.8%	72.8%	0.0%	0.4%	2.1%
SJ 27	1,989	13.7%	21.3%	60.5%	0.4%	0.5%	3.6%
SJ 34	1,133	16.5%	41.2%	35.3%	1.1%	1.9%	3.9%
SJ 50	2,445	16.8%	30.4%	45.5%	2.0%	2.4%	2.9%
SJ 109	1,402	24.4%	24.7%	42.8%	3.6%	0.7%	3.9%
SJ 110	1,730	17.8%	6.3%	72.7%	0.5%	0.4%	2.3%
SJ 120	1,494	1.0%	0.6%	97.2%	0.1%	0.3%	0.9%
SJ 121	910	7.8%	15.1%	71.9%	0.6%	0.9%	3.7%
SJ 130	476	0.5%	0.5%	98.1%	0.0%	0.0%	0.8%
SJ 131	865	0.6%	1.9%	92.4%	0.0%	4.0%	1.1%
SJ 132	953	1.3%	0.5%	96.7%	0.2%	0.0%	1.3%
SJ 134	428	0.3%	0.3%	98.4%	0.0%	0.0%	0.9%
<b>District Total</b>	<b>28,168</b>	<b>7.5%</b>	<b>12.1%</b>	<b>76.9%</b>	<b>0.6%</b>	<b>0.9%</b>	<b>2.0%</b>