

RESEARCH & POLLING, INC.

For the New Mexico Legislative Council Service

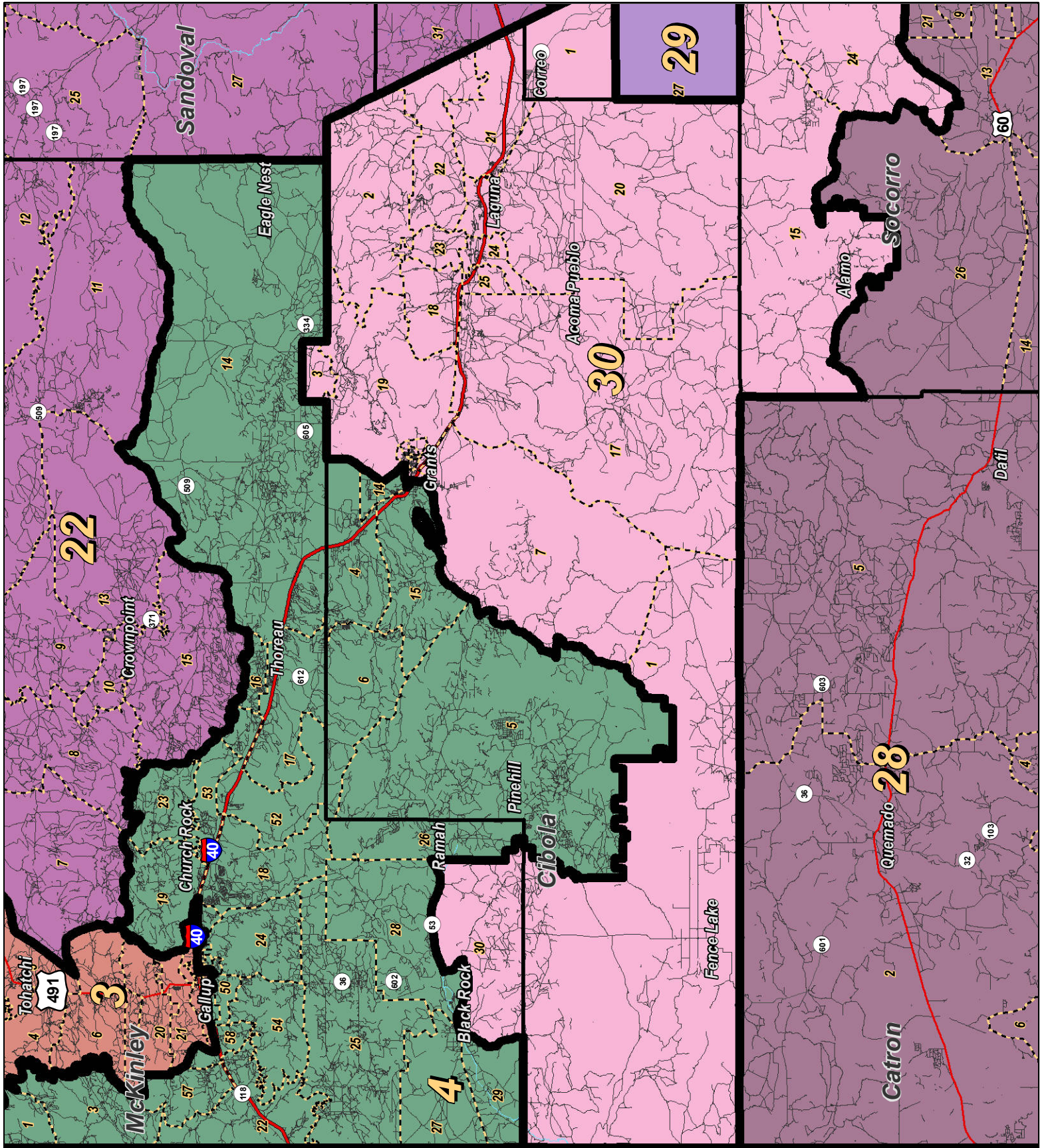
0 6 12 18 24 Miles



LEGEND Created: January 31, 2012

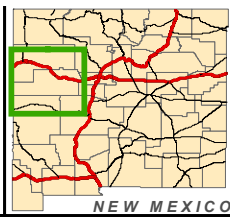
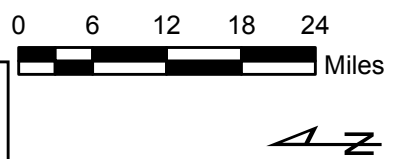
Precincts	Rivers	Interstate
Counties	Lakes / Ponds	US Highway
		State Highway

Research & Polling, Inc. distributes this map assuming no liability for any errors, omissions, or inaccuracies in the information provided regardless of the cause in reliance upon any maps.



RESEARCH & POLLING INC.

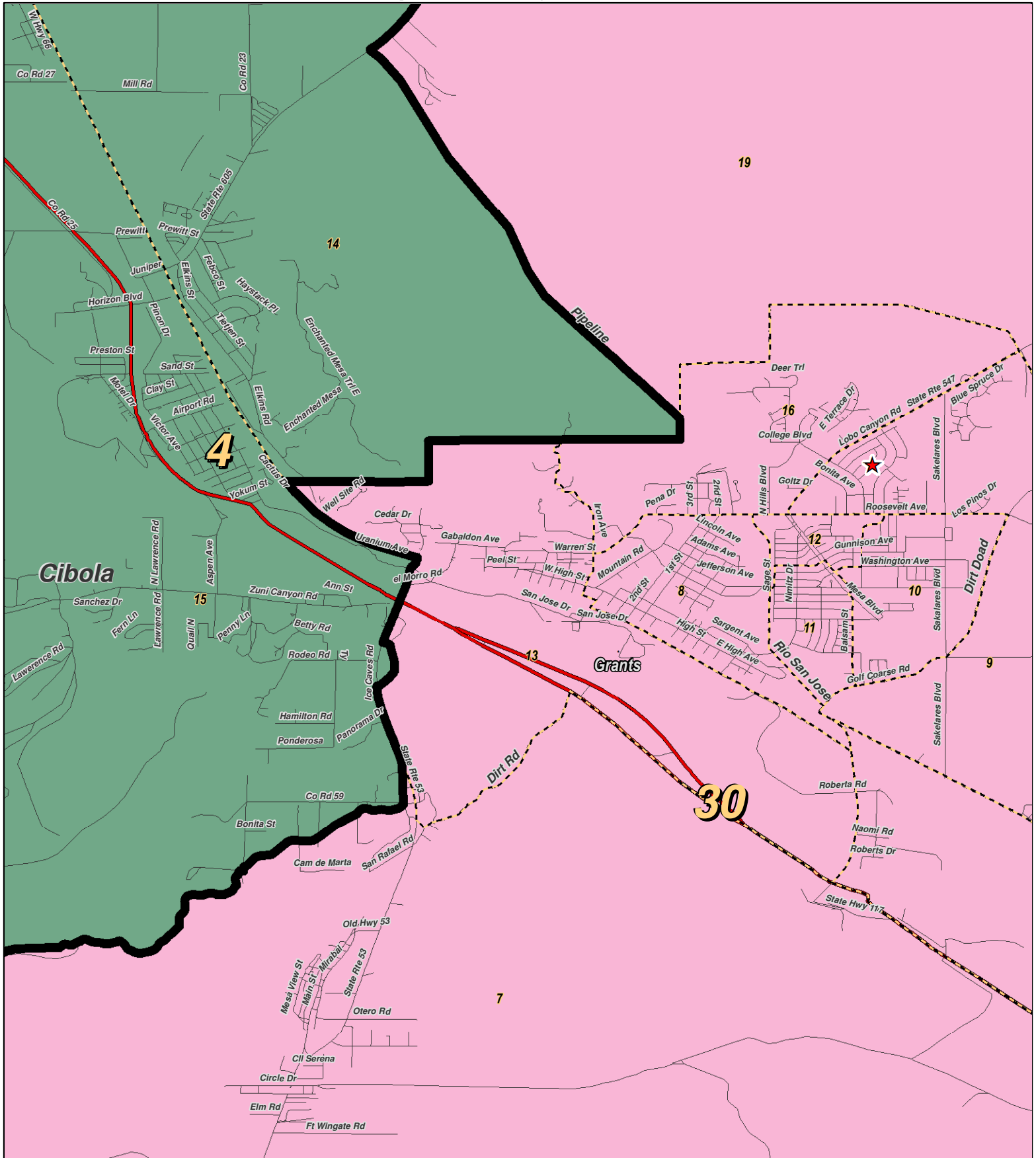
For the New Mexico Legislative Council Service



LEGEND Created: January 30, 2012

Precincts	Rivers	Interstate
Counties	Lakes / Ponds	US Highway
		State Highway

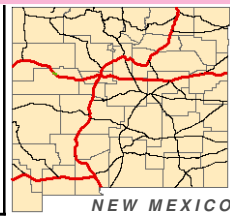
Research & Polling, Inc. distributes this map assuming no liability for any errors, omissions, or inaccuracies in the information provided regardless of the cause in reliance upon any maps.



0 1 Miles

RESEARCH & POLLING INC.

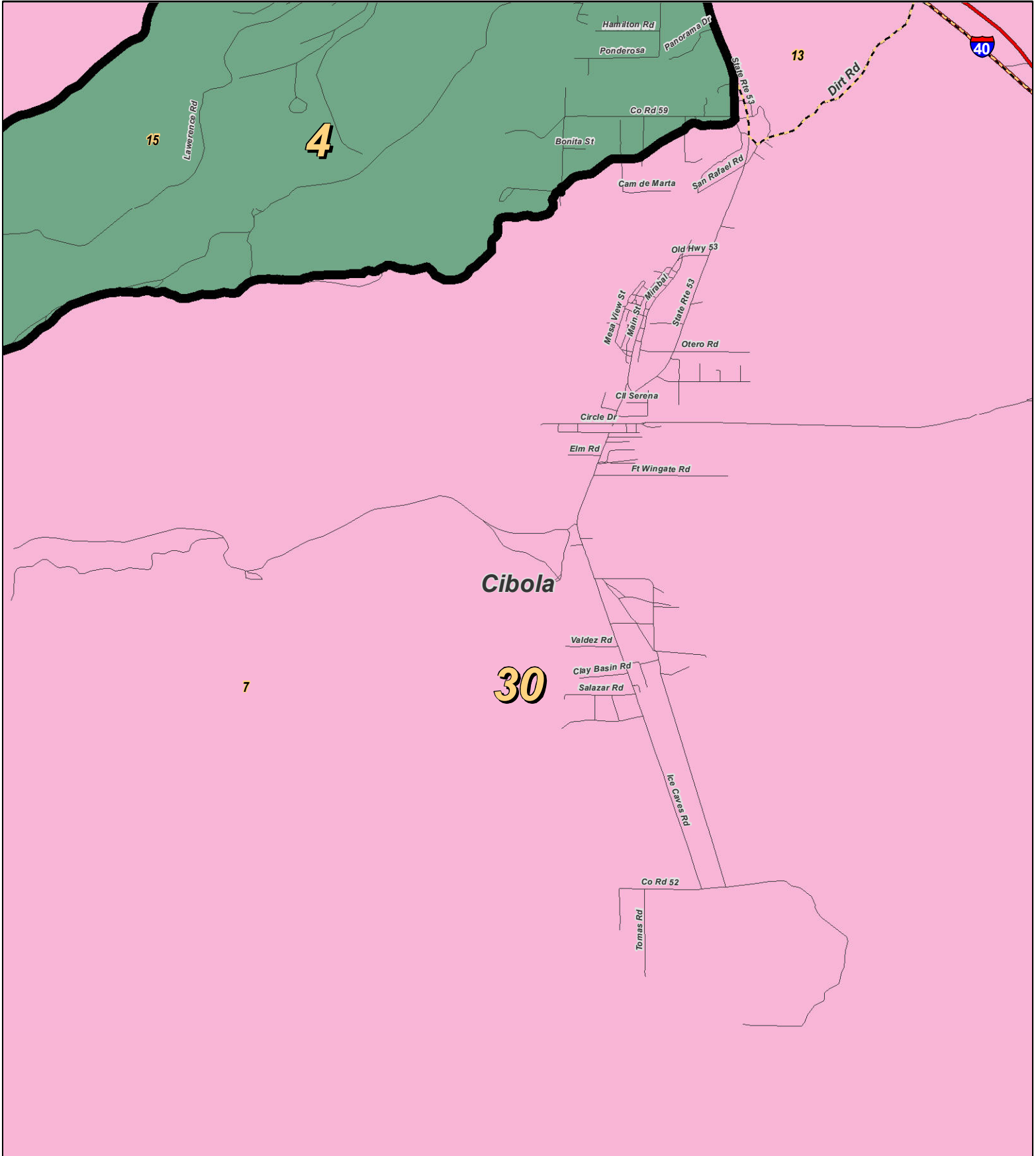
For the New Mexico Legislative Council Service



LEGEND Created: January 18, 2012

- ★ Legislators
- Precincts
- Counties
- ~ Rivers
- ~ Lakes / Ponds
- ~ Interstate
- ~ US Highway
- ~ State Highway

Research & Polling, Inc. distributes this map assuming no liability for any errors, omissions, or inaccuracies in the information provided regardless of the cause in reliance upon any maps.



0 1 Miles

For the New Mexico Legislative Council Service

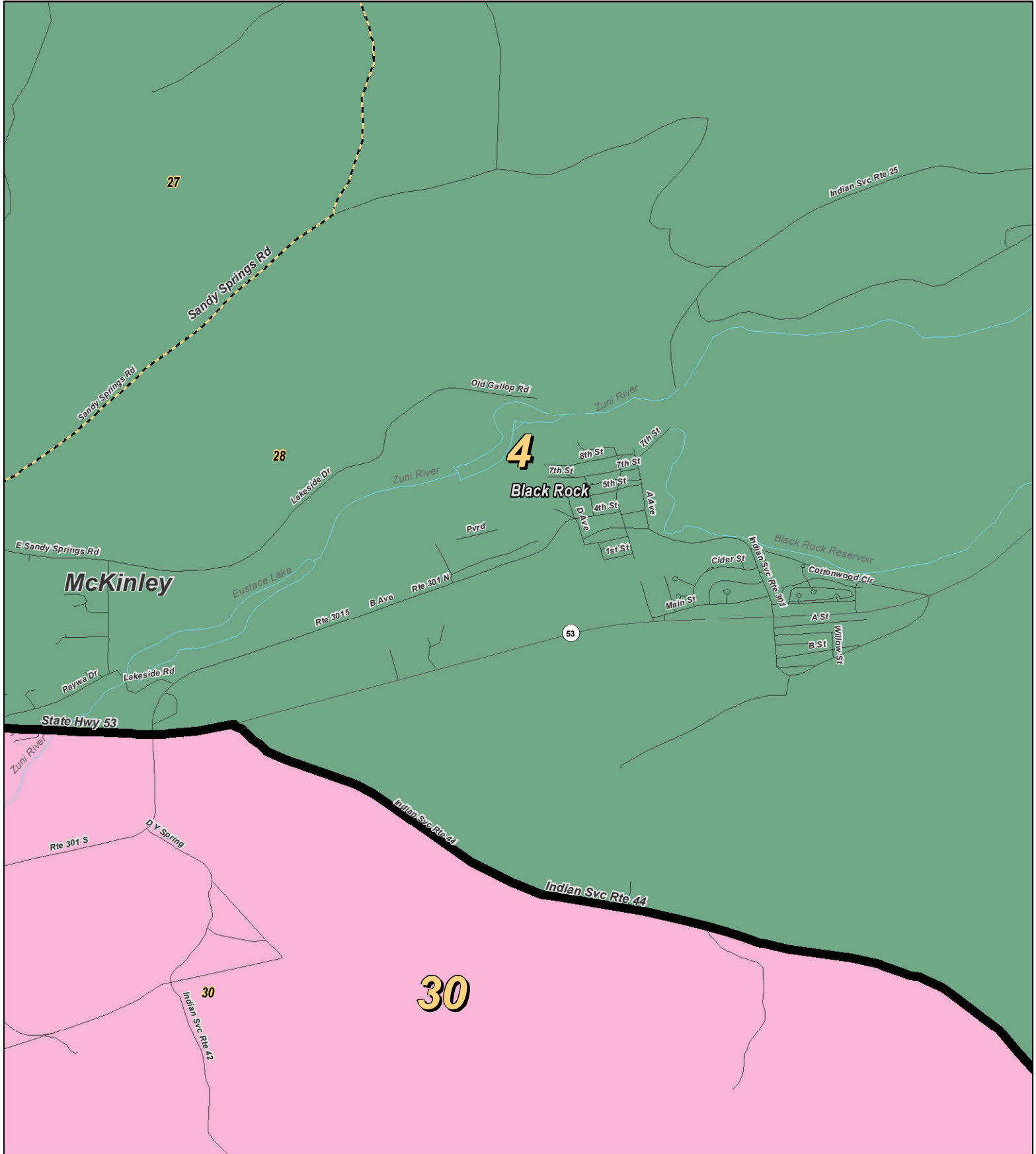
N



LEGEND Created: January 23, 2012

★ Legislators	~ Rivers	⚡ Interstate
▭ Precincts	☪ Lakes / Ponds	⚡ US Highway
▭ Counties		~ State Highway

Research & Polling, Inc. distributes this map assuming no liability for any errors, omissions, or inaccuracies in the information provided regardless of the cause in reliance upon any maps.



RESEARCH & POLLING, INC.

For the New Mexico Legislative Council Service

0 0.75 Miles

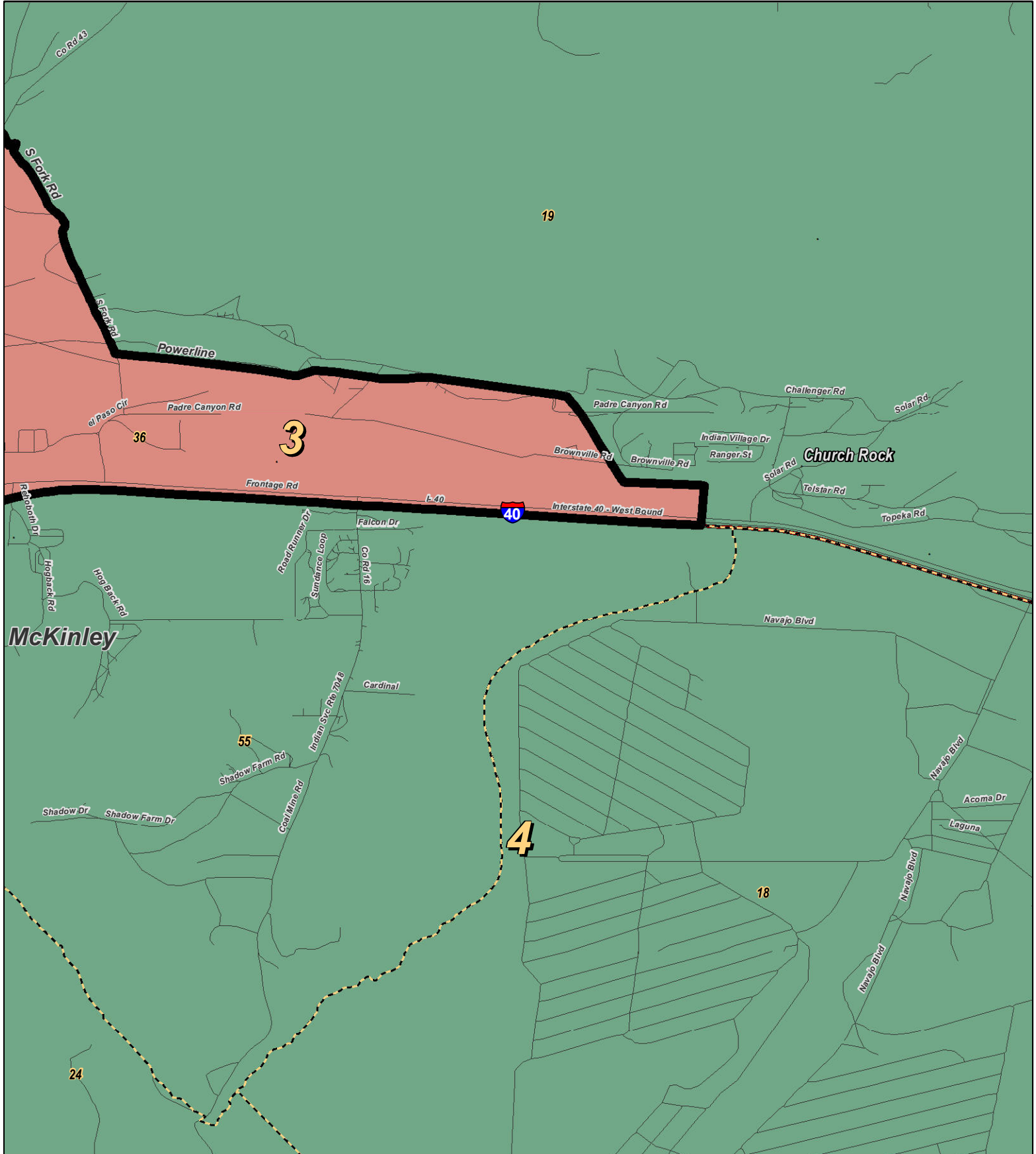
N

NEW MEXICO

LEGEND Created: January 23, 2012

★ Legislators	~ Rivers	⚡ Interstate
▭ Precincts	🌊 Lakes / Ponds	🛣️ US Highway
▭ Counties		⤵️ State Highway

Research & Polling, Inc. distributes this map assuming no liability for any errors, omissions, or inaccuracies in the information provided regardless of the cause in reliance upon any maps.



0 1 Miles

RESEARCH & POLLING INC.

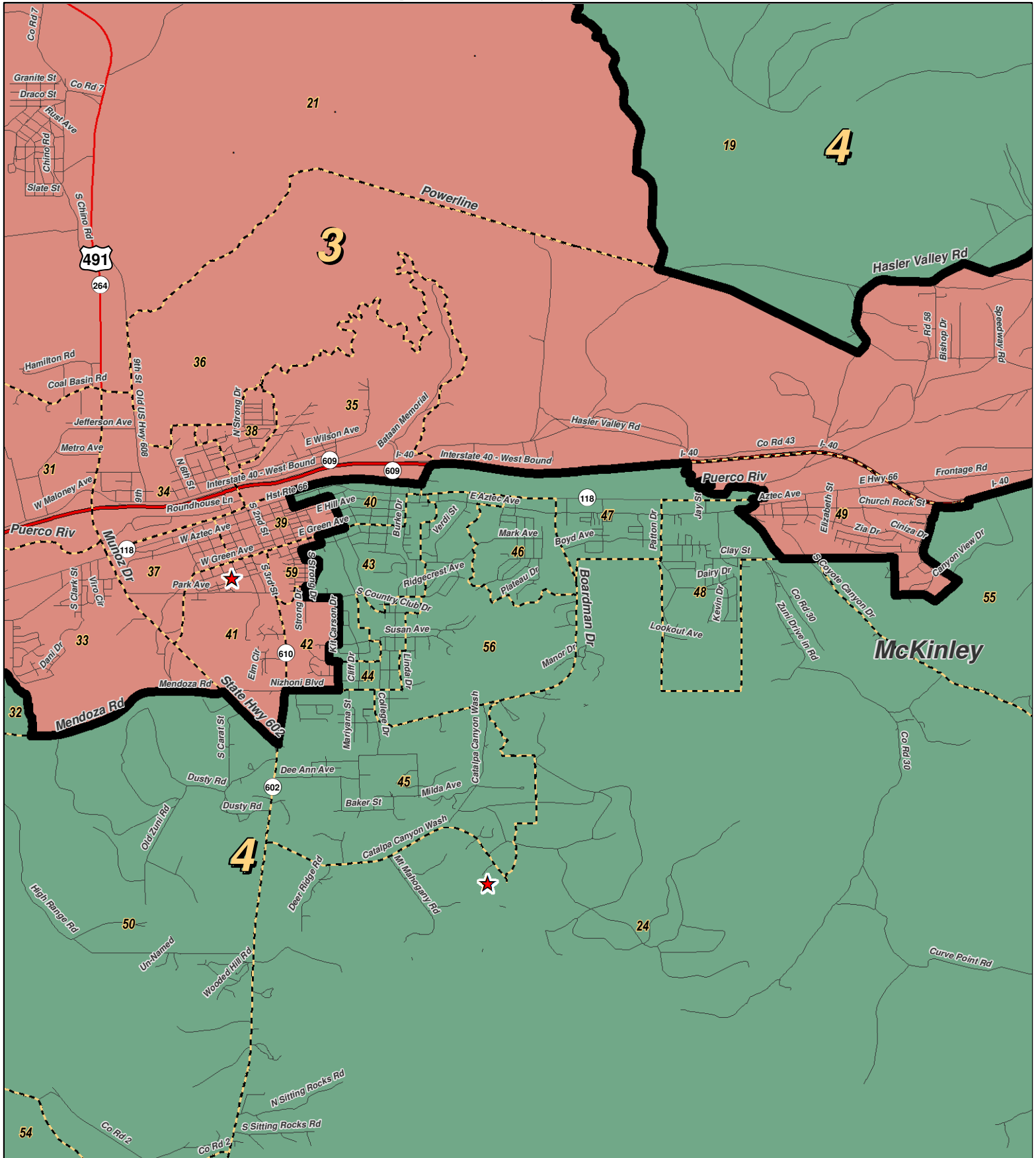
For the New Mexico Legislative Council Service



LEGEND Created: January 23, 2012

★ Legislators	~ Rivers	⚡ Interstate
▭ Precincts	☪ Lakes / Ponds	⚡ US Highway
▭ Counties		~ State Highway

Research & Polling, Inc. distributes this map assuming no liability for any errors, omissions, or inaccuracies in the information provided regardless of the cause in reliance upon any maps.



0 1 Miles

RESEARCH & POLLING INC.

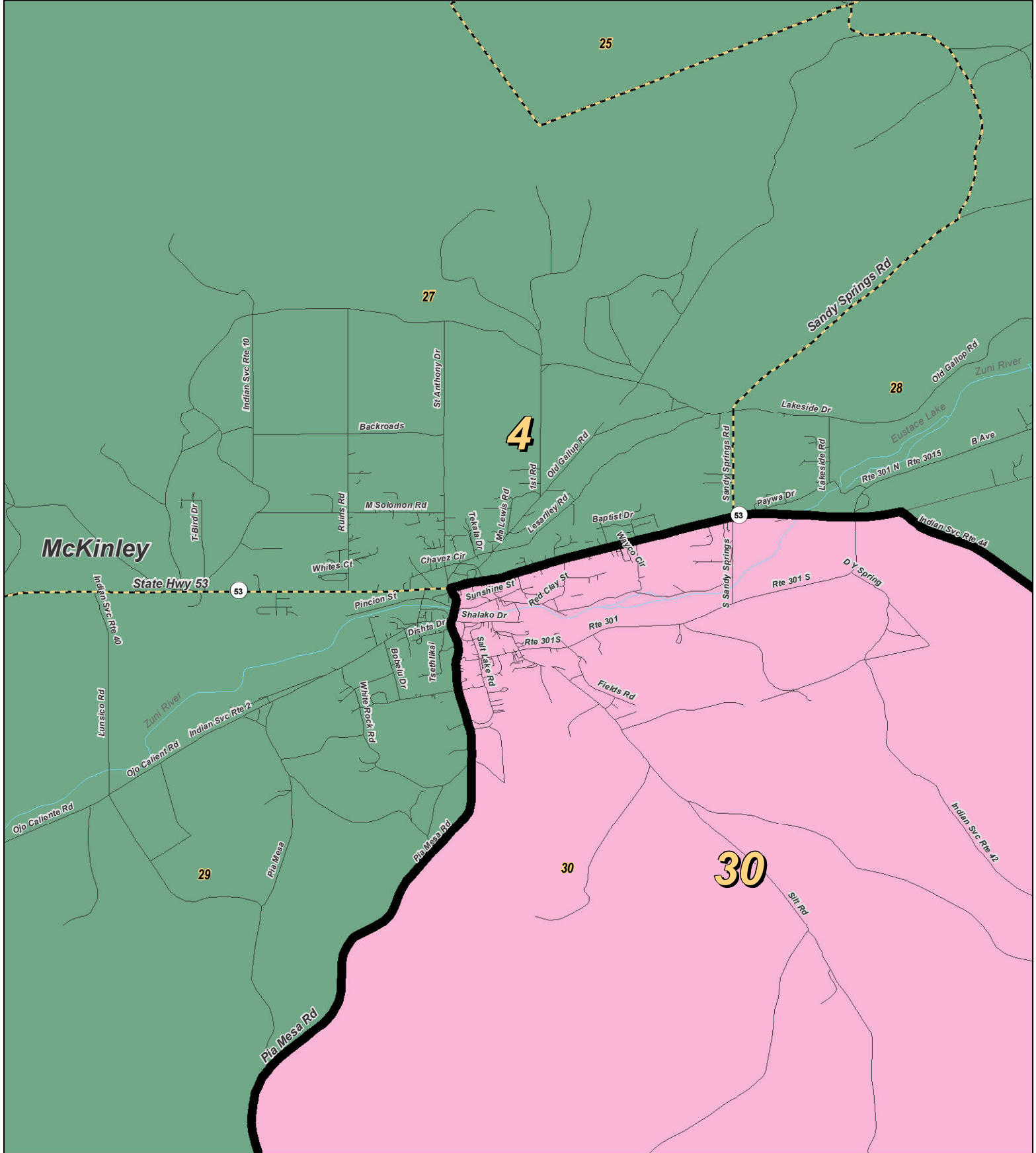
For the New Mexico Legislative Council Service



LEGEND Created: January 18, 2012

- ★ Legislators
- ▭ Precincts
- ▭ Counties
- ~ Rivers
- ~ Lakes / Ponds
- ~ Interstate
- ~ US Highway
- ~ State Highway

Research & Polling, Inc. distributes this map assuming no liability for any errors, omissions, or inaccuracies in the information provided regardless of the cause in reliance upon any maps.



RESEARCH & POLLING, INC.

For the New Mexico Legislative Council Service

0 1 Miles

NEW MEXICO

LEGEND Created: January 23, 2012

★ Legislators	~ Rivers	⚡ Interstate
▭ Precincts	☪ Lakes / Ponds	⚡ US Highway
▭ Counties		~ State Highway

Research & Polling, Inc. distributes this map assuming no liability for any errors, omissions, or inaccuracies in the information provided regardless of the cause in reliance upon any maps.

**NM Senate
Plaintiffs, Intervenors, and Executive Defendants Joint
(Court Adopted January 2012)**

**2010 Census
Redistricting**

District: 4

District: 4				Adult Non-Hispanic		
County/ Precinct	Total Population	Adult Hispanic	Total Adult Native American	White	Native American	Black
CI 4	958	20.4%	16.7%	63.8%	14.0%	0.5%
CI 5	2,297	3.7%	76.2%	20.1%	72.9%	0.6%
CI 6	164	26.1%	17.4%	55.8%	13.0%	0.0%
CI 14	1,164	36.9%	8.8%	53.5%	7.6%	0.8%
CI 15	3,320	68.3%	10.0%	21.6%	8.5%	0.6%
MC 1	2,273	1.6%	96.6%	2.2%	94.9%	0.3%
MC 3	1,531	3.9%	91.8%	6.5%	88.3%	0.1%
MC 14	1,767	5.9%	87.5%	8.4%	84.8%	0.0%
MC 16	957	4.9%	89.4%	7.3%	87.0%	0.5%
MC 17	1,764	9.5%	65.1%	26.9%	61.1%	0.7%
MC 18	411	5.0%	86.1%	10.7%	81.5%	0.7%
MC 19	1,789	2.4%	99.0%	0.1%	97.0%	0.3%
MC 22	1,232	2.0%	92.7%	5.6%	91.1%	0.2%
MC 23	1,330	0.2%	99.4%	0.5%	98.5%	0.1%
MC 24	1,474	4.7%	90.6%	5.6%	88.7%	0.0%
MC 25	2,224	2.6%	87.0%	10.5%	86.2%	0.1%
MC 26	604	6.3%	30.4%	62.8%	26.8%	0.2%
MC 27	2,620	2.7%	96.8%	1.9%	94.4%	0.0%
MC 28	1,490	1.4%	87.8%	10.2%	86.2%	0.6%
MC 29	1,494	0.7%	99.4%	0.4%	98.6%	0.0%
MC 32	579	14.8%	57.5%	26.9%	54.9%	0.5%
MC 40	726	23.1%	48.9%	28.0%	44.3%	1.8%
MC 43	1,503	27.5%	26.6%	43.5%	22.0%	0.7%
MC 44	463	20.1%	6.2%	66.5%	4.6%	0.8%
MC 45	1,035	18.0%	36.1%	35.1%	32.2%	2.9%
MC 46	929	31.6%	18.4%	48.5%	14.4%	0.3%
MC 47	998	20.4%	74.9%	6.0%	70.7%	1.0%
MC 48	2,647	28.4%	62.8%	11.5%	56.9%	0.6%
MC 50	349	18.9%	59.7%	28.3%	48.9%	0.0%
MC 52	726	8.3%	55.5%	35.5%	52.8%	1.2%
MC 53	917	0.3%	99.5%	0.5%	98.4%	0.0%
MC 54	983	3.8%	94.0%	3.8%	91.0%	0.0%

District: 4

District: 4				Adult Non-Hispanic		
County/ Precinct	Total Population	Adult Hispanic	Total Adult Native American	White	Native American	Black
MC 55	764	2.9%	93.1%	5.9%	91.2%	0.0%
MC 56	1,033	16.9%	27.5%	48.0%	24.7%	2.2%
MC 57	781	1.9%	97.0%	1.9%	94.4%	0.0%
MC 58	1,391	15.8%	66.3%	19.3%	61.8%	0.5%
SJ 9	436	2.8%	96.3%	2.5%	94.5%	0.0%
SJ 10	990	1.8%	97.5%	1.6%	96.0%	0.0%
SJ 11	864	2.2%	94.9%	3.3%	93.3%	0.3%
District Totals	48,977	14.4%	68.3%	17.4%	65.6%	0.5%