

0 8 16 24 32 Miles

RESEARCH & POLLING INC.

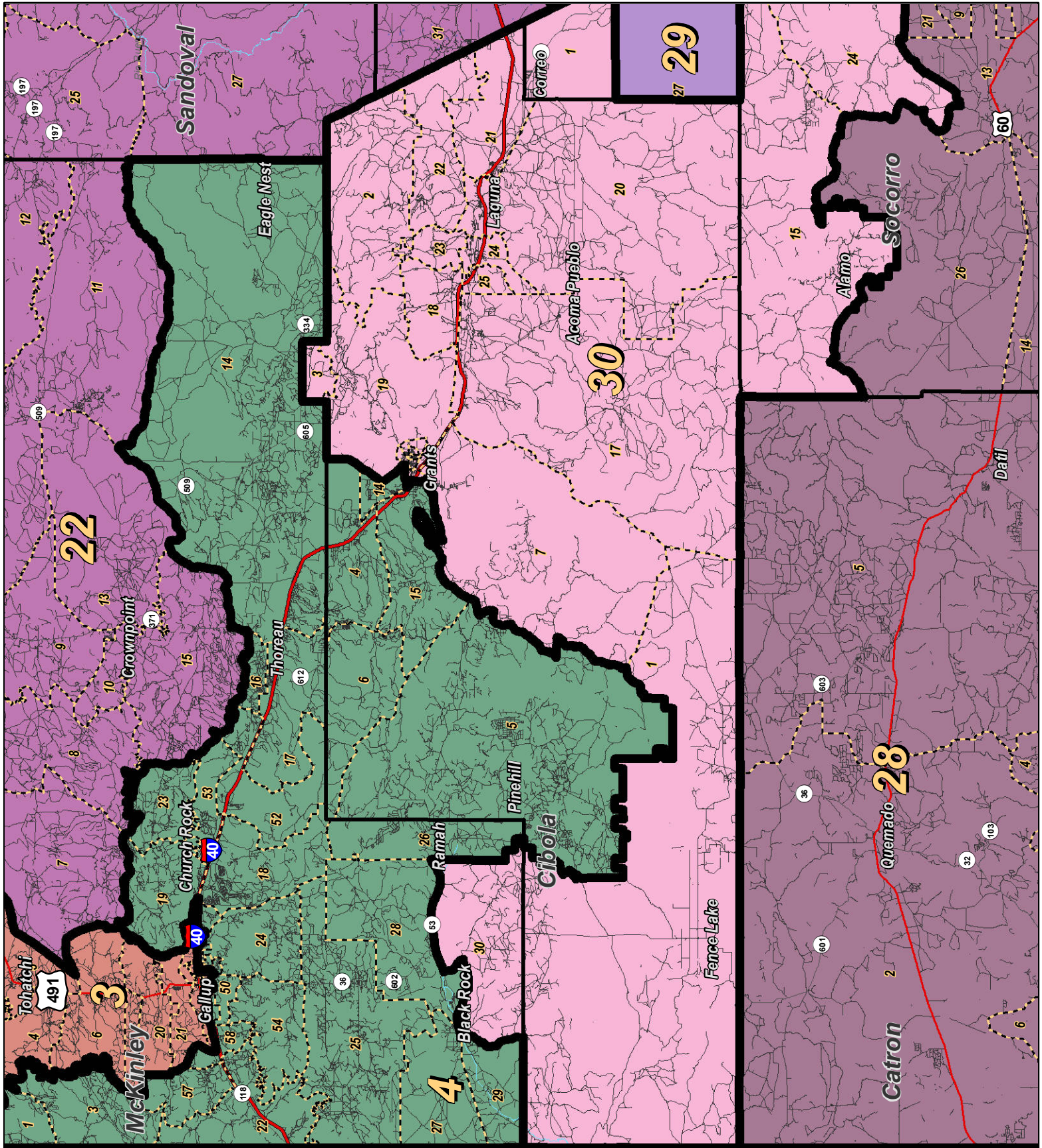
For the New Mexico Legislative Council Service



LEGEND Created: January 31, 2012

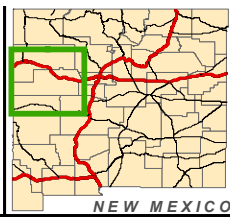
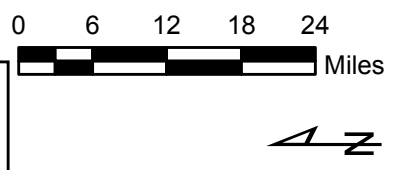
- Precincts
- Counties
- Rivers
- Lakes / Ponds
- Interstate
- US Highway
- State Highway

Research & Polling, Inc. distributes this map assuming no liability for any errors, omissions, or inaccuracies in the information provided regardless of the cause in reliance upon any maps.



RESEARCH & POLLING INC.

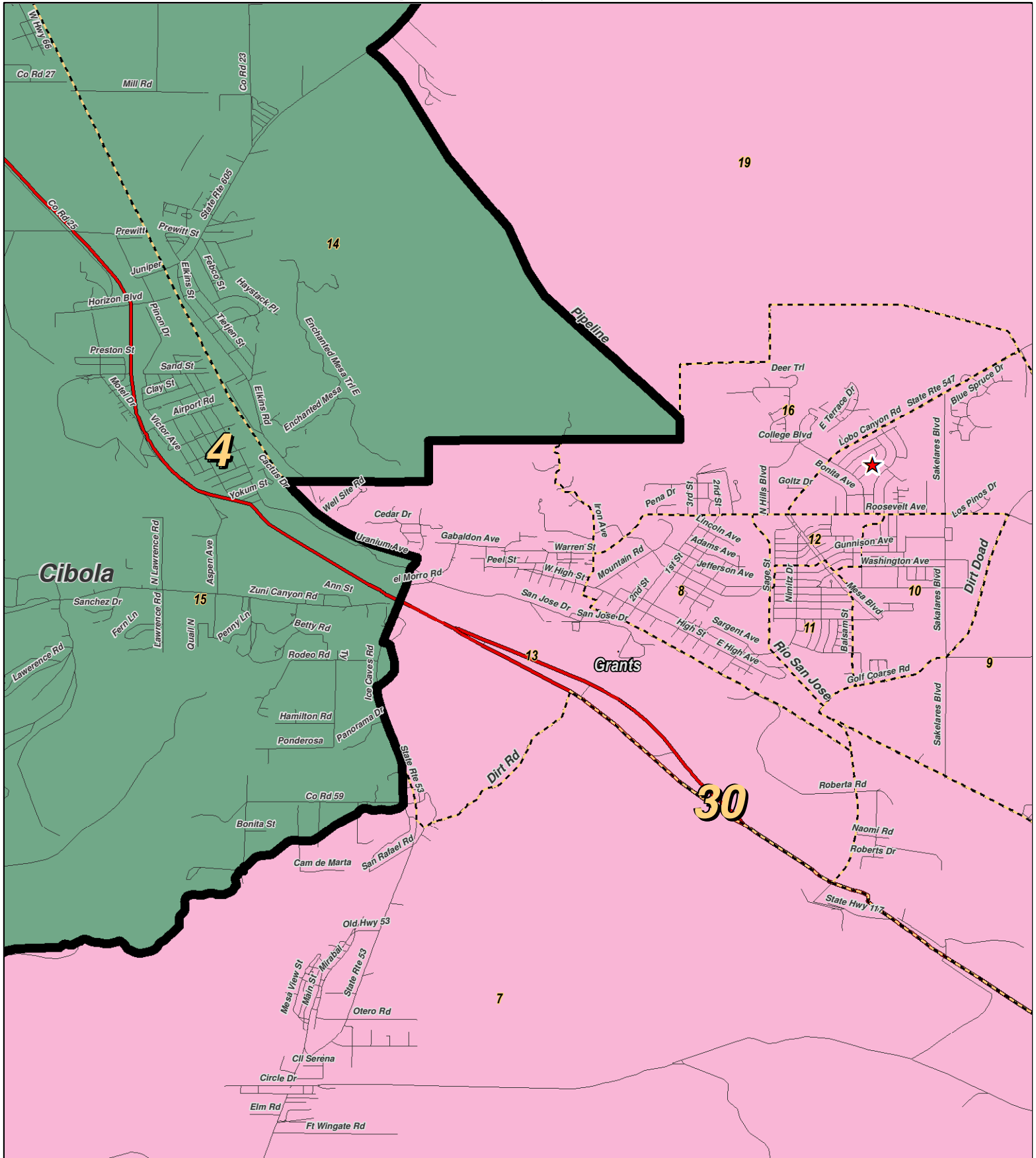
For the New Mexico Legislative Council Service



LEGEND Created: January 30, 2012

Precincts	Rivers	Interstate
Counties	Lakes / Ponds	US Highway
		State Highway

Research & Polling, Inc. distributes this map assuming no liability for any errors, omissions, or inaccuracies in the information provided regardless of the cause in reliance upon any maps.



RESEARCH & POLLING
INC.

For the New Mexico
Legislative Council Service

0 1 Miles

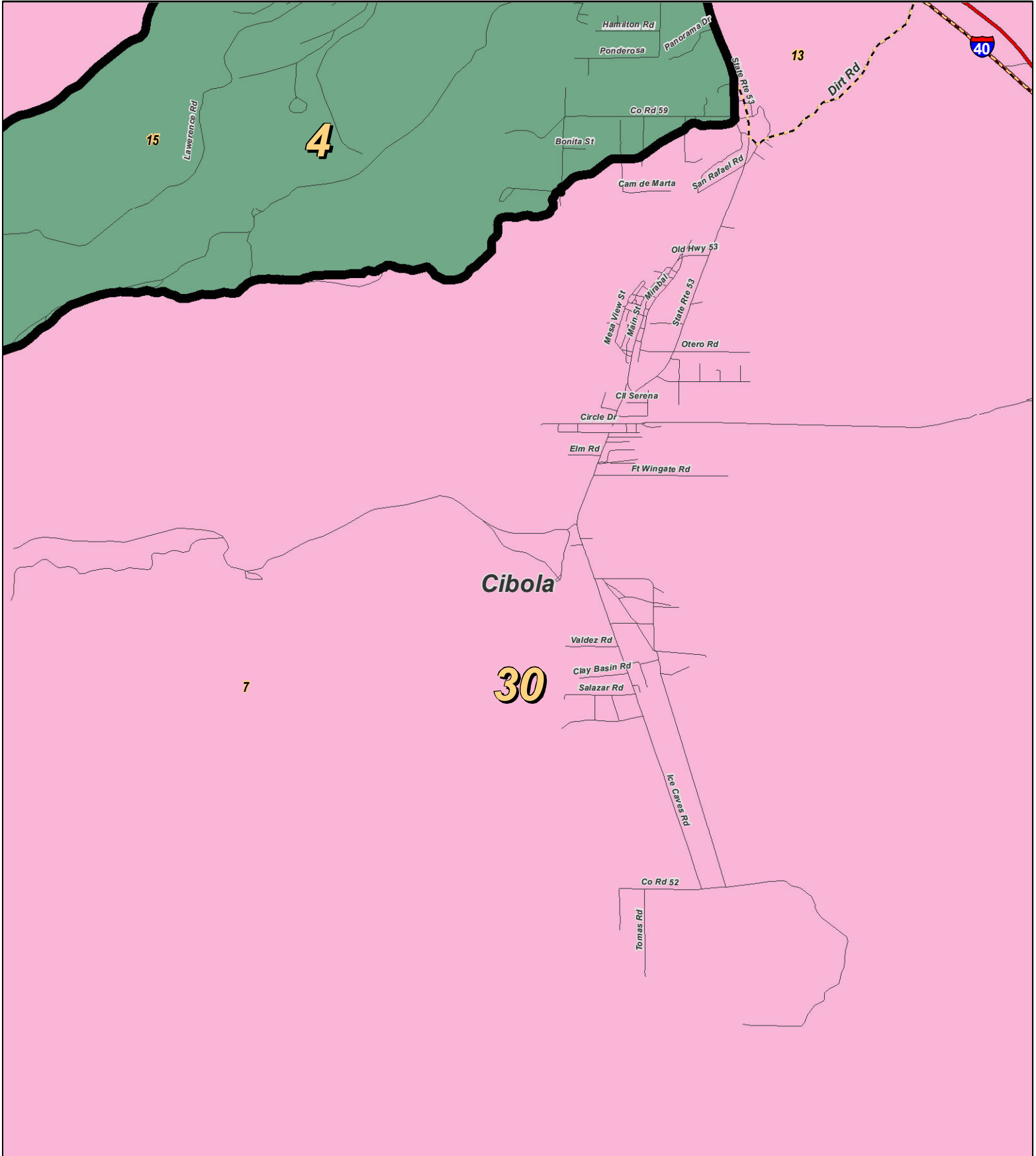
NEW MEXICO



LEGEND Created: January 18, 2012

- Legislators
- Rivers
- Interstate
- Lakes / Ponds
- US Highway
- State Highway
- Precincts
- Counties

Research & Polling, Inc. distributes this map assuming no liability for any errors, omissions, or inaccuracies in the information provided regardless of the cause in reliance upon any maps.



0 1 Miles

For the New Mexico Legislative Council Service

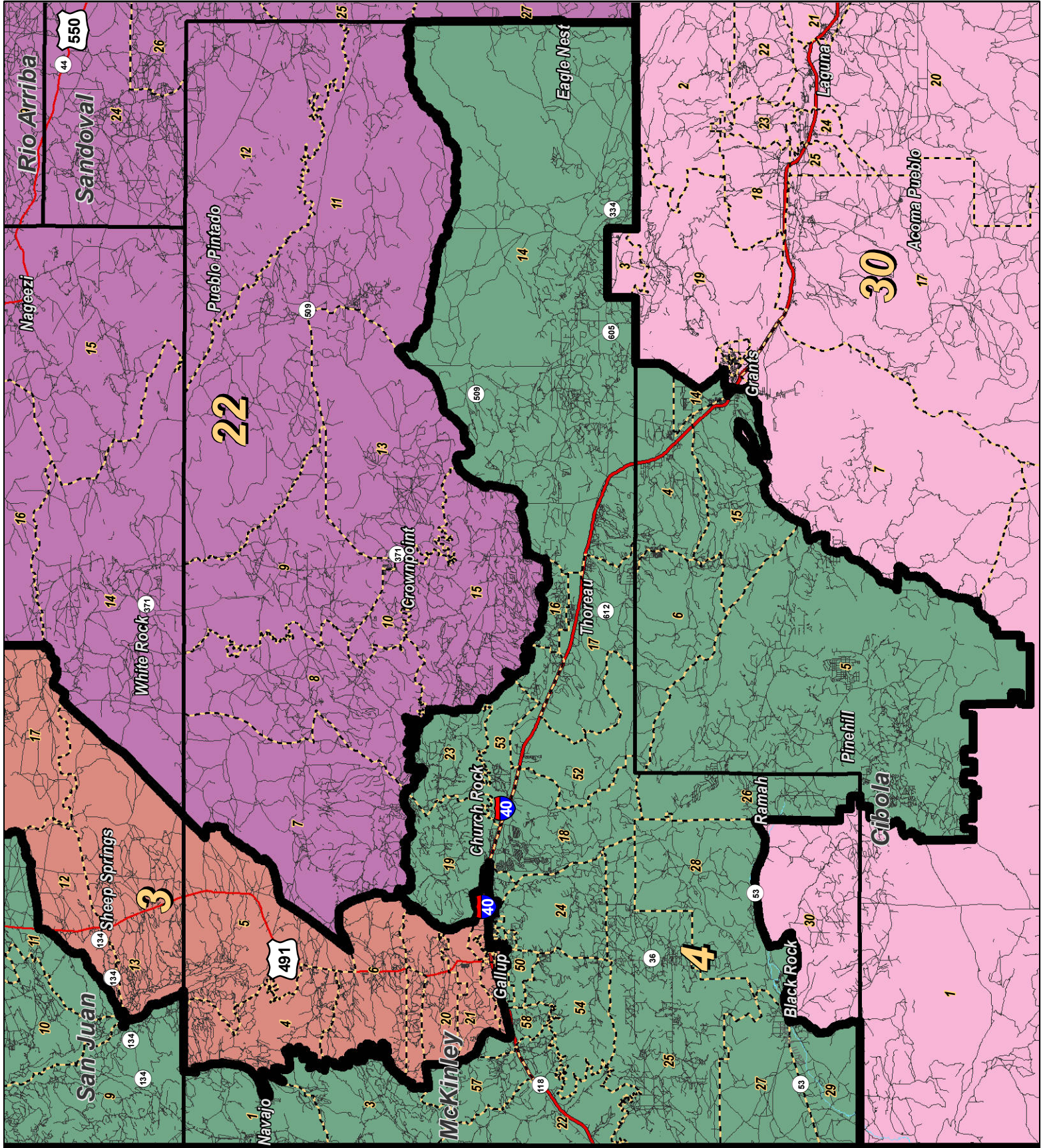
N



LEGEND Created: January 23, 2012

★ Legislators	~ Rivers	⚡ Interstate
▭ Precincts	☪ Lakes / Ponds	⚡ US Highway
▭ Counties		~ State Highway

Research & Polling, Inc. distributes this map assuming no liability for any errors, omissions, or inaccuracies in the information provided regardless of the cause in reliance upon any maps.



For the New Mexico Legislative Council Service

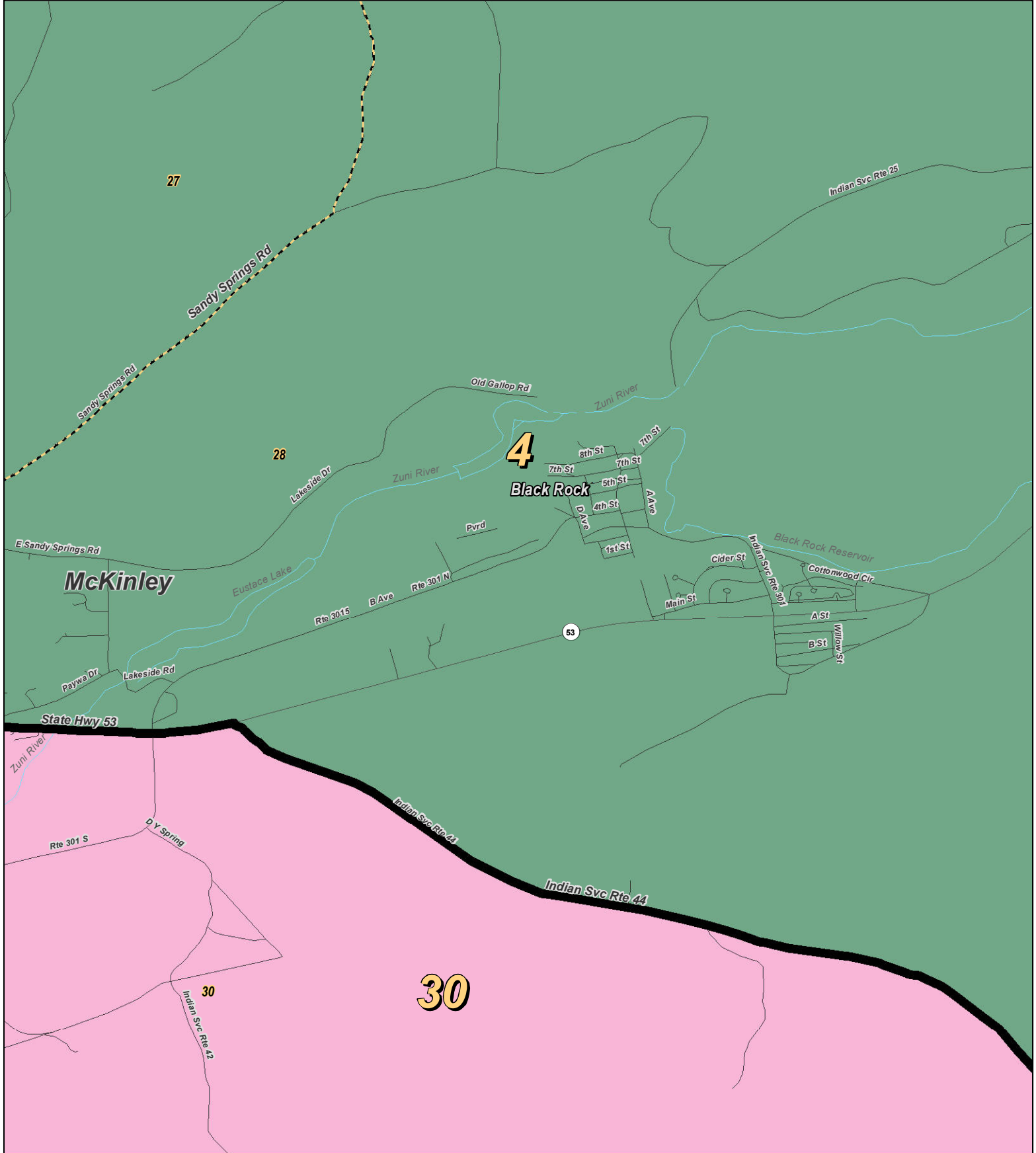
0 6 12 18 24 Miles

NEW MEXICO

LEGEND Created: January 30, 2012

Precincts	Rivers	Interstate
Counties	Lakes / Ponds	US Highway
		State Highway

Research & Polling, Inc. distributes this map assuming no liability for any errors, omissions, or inaccuracies in the information provided regardless of the cause in reliance upon any maps.



0 0.75 Miles

RESEARCH & POLLING INC.

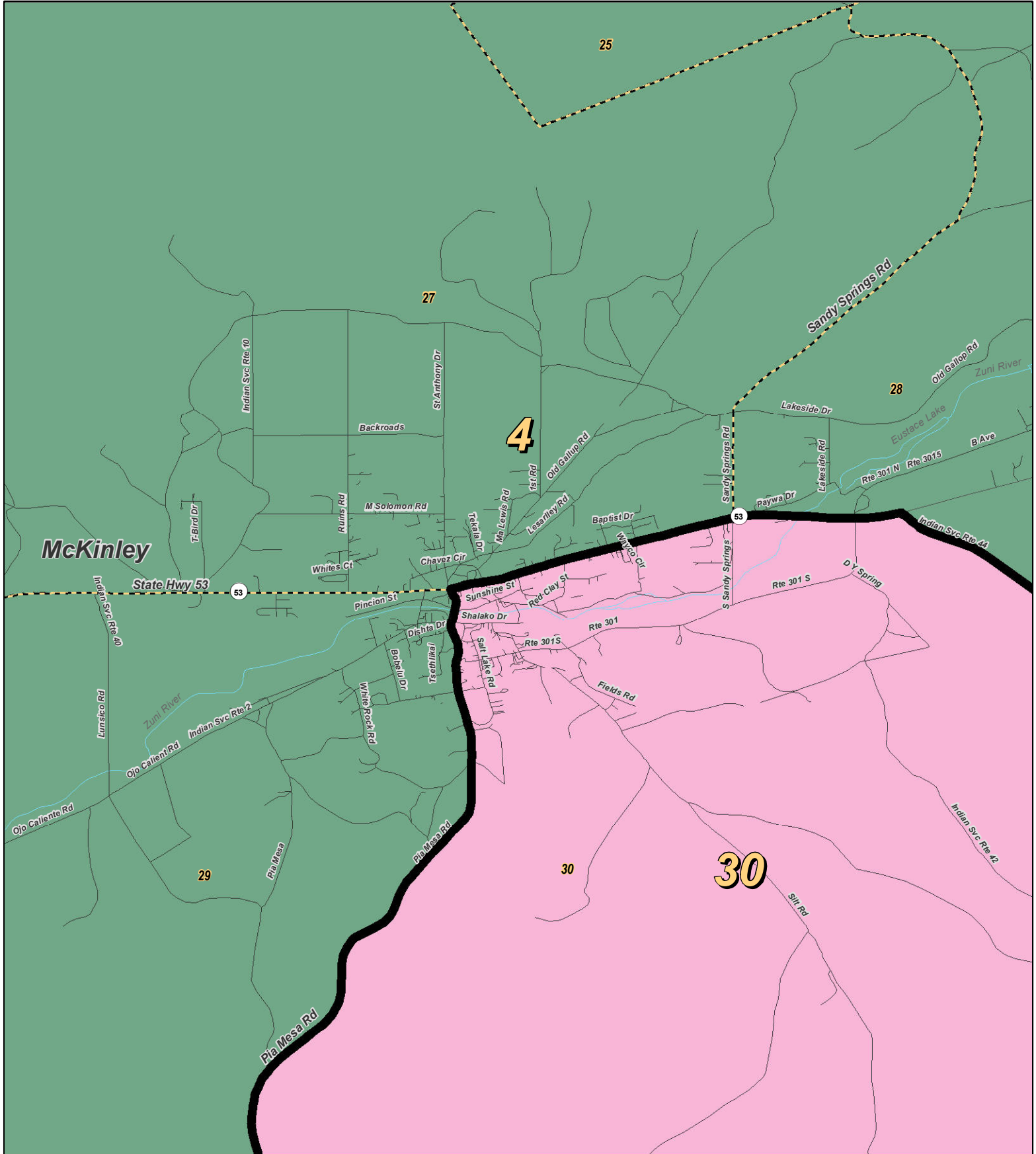
For the New Mexico Legislative Council Service



LEGEND Created: January 23, 2012

★ Legislators	~ Rivers	↔ Interstate
▭ Precincts	☁ Lakes / Ponds	↔ US Highway
▭ Counties		~ State Highway

Research & Polling, Inc. distributes this map assuming no liability for any errors, omissions, or inaccuracies in the information provided regardless of the cause in reliance upon any maps.



RESEARCH & POLLING, INC.

For the New Mexico Legislative Council Service

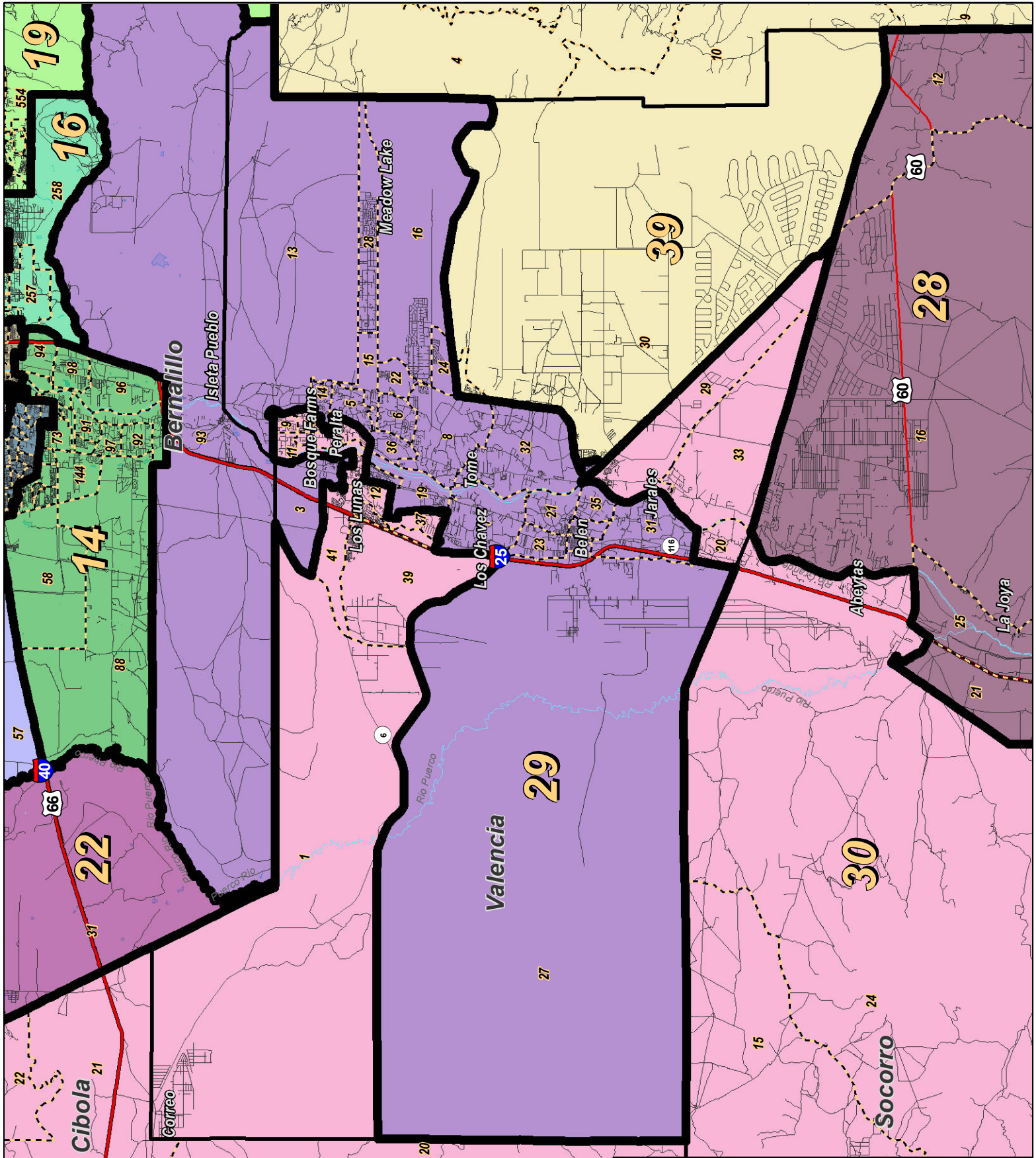
0 1 Miles

NEW MEXICO

LEGEND Created: January 23, 2012

★ Legislators	~ Rivers	⚡ Interstate
▭ Precincts	☪ Lakes / Ponds	⚡ US Highway
▭ Counties		~ State Highway

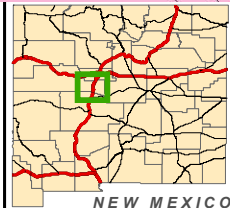
Research & Polling, Inc. distributes this map assuming no liability for any errors, omissions, or inaccuracies in the information provided regardless of the cause in reliance upon any maps.



0 2 4 6 8 Miles

RESEARCH & POLLING INC.

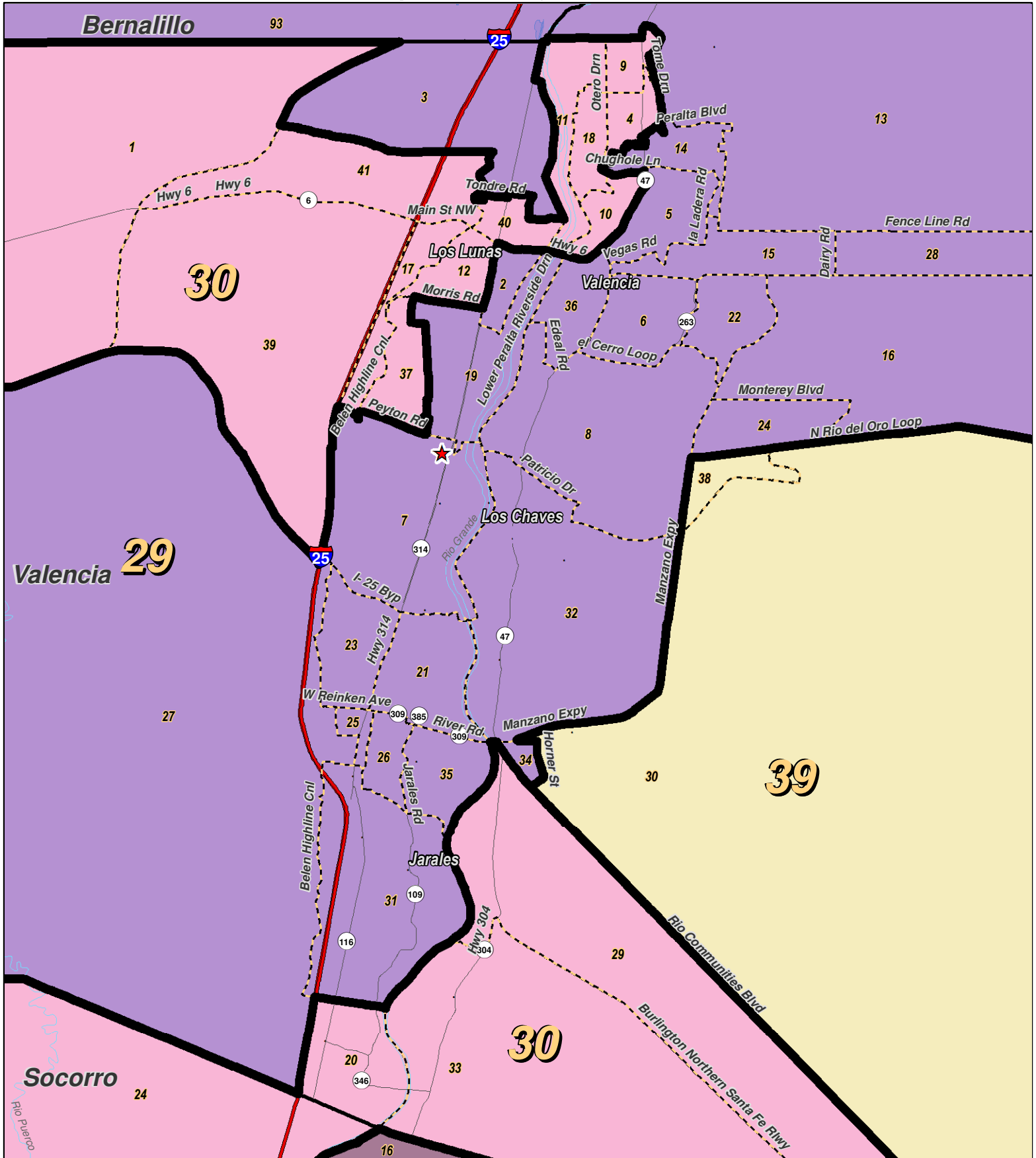
For the New Mexico Legislative Council Service



LEGEND Created: January 30, 2012

Precincts	Rivers	Interstate
Counties	Lakes / Ponds	US Highway
		State Highway

Research & Polling, Inc. distributes this map assuming no liability for any errors, omissions, or inaccuracies in the information provided regardless of the cause in reliance upon any maps.



0 1 2 3 4 Miles

RESEARCH & POLLING INC.

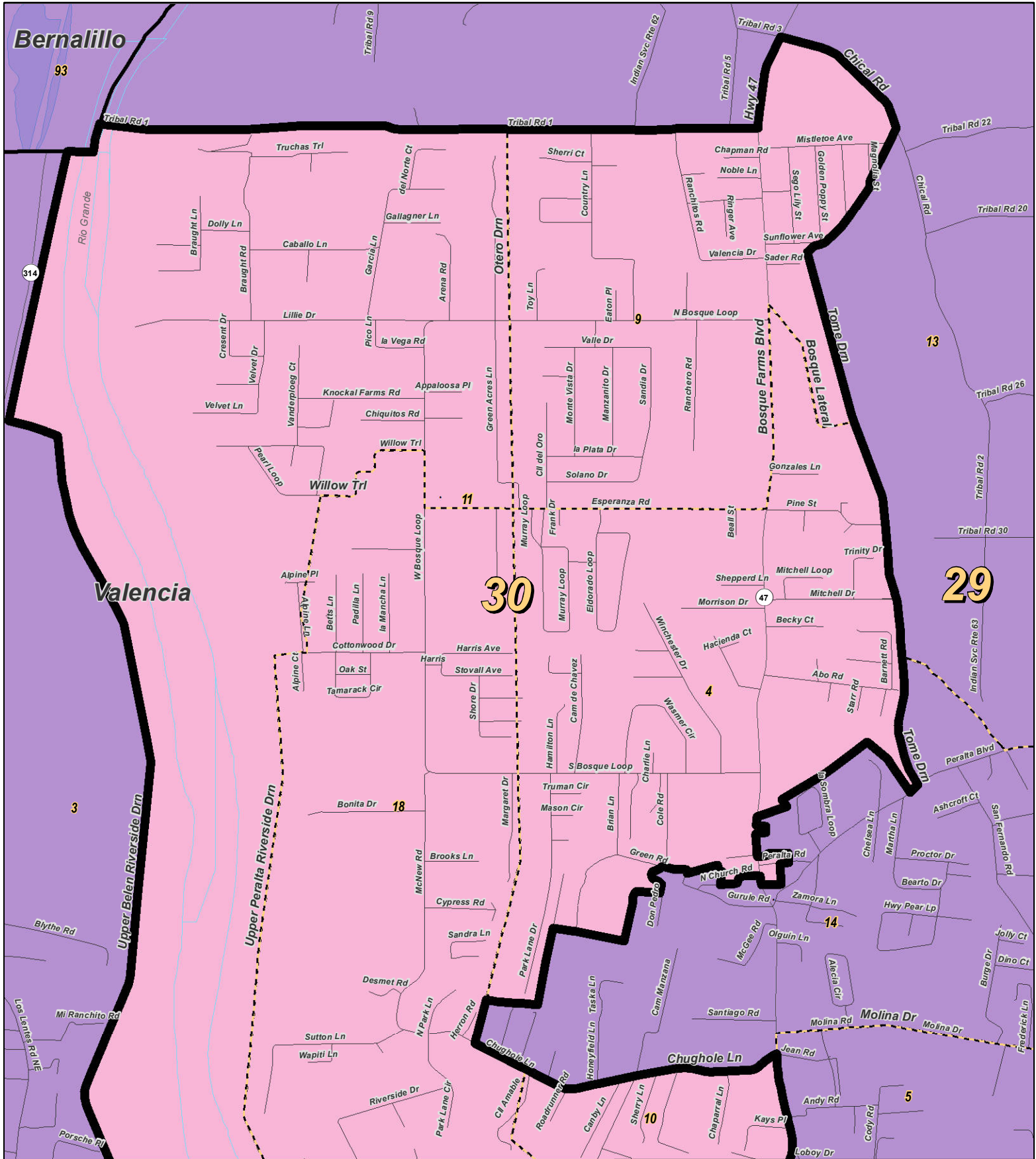
For the New Mexico Legislative Council Service



LEGEND Created: January 18, 2012

- ★ Legislators
- ▭ Precincts
- ▭ Counties
- ~ Rivers
- ~ Lakes / Ponds
- Interstate
- US Highway
- State Highway

Research & Polling, Inc. distributes this map assuming no liability for any errors, omissions, or inaccuracies in the information provided regardless of the cause in reliance upon any maps.



0 0.6 Miles

RESEARCH & POLLING INC.

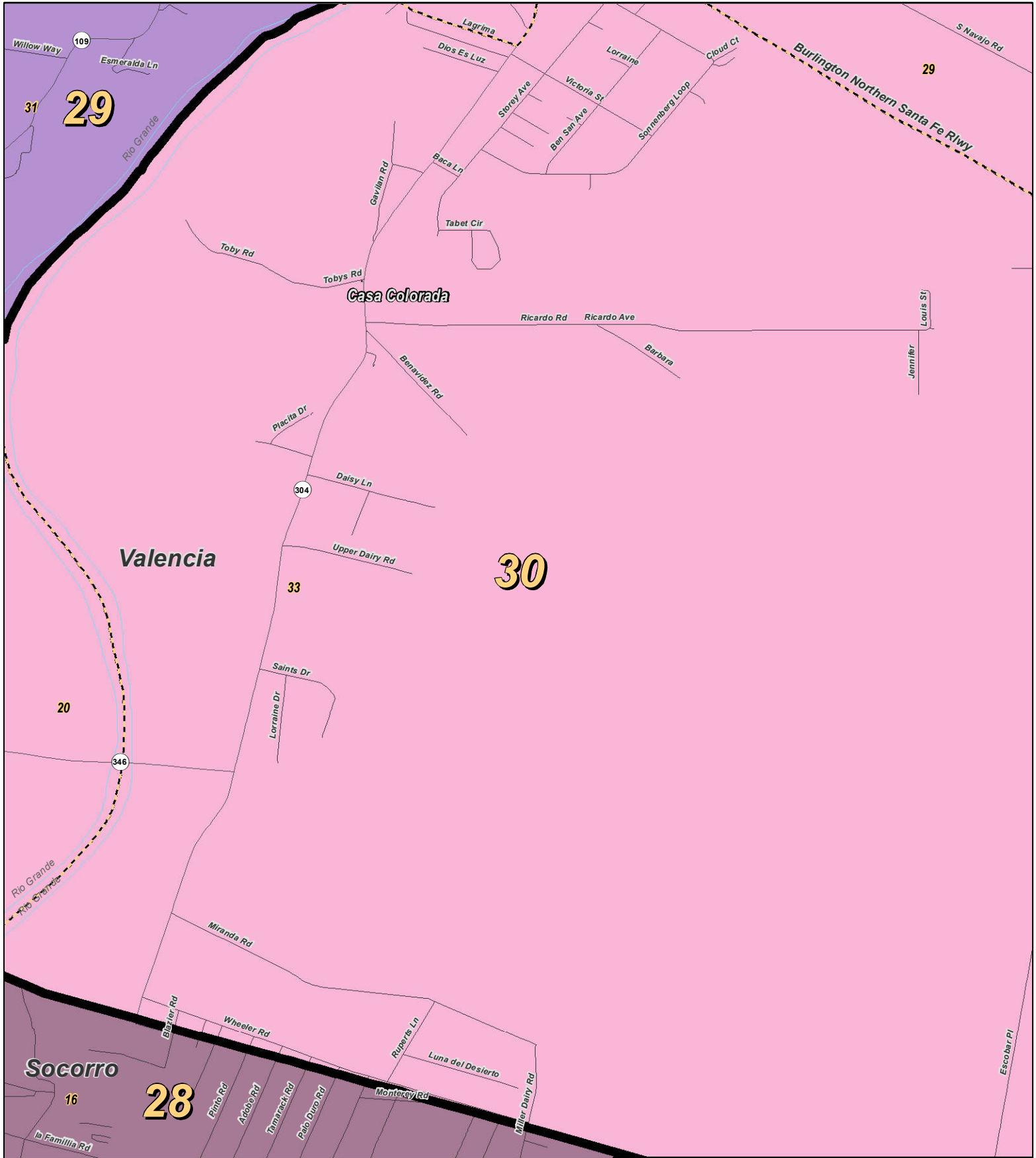
For the New Mexico Legislative Council Service



LEGEND Created: January 23, 2012

- ★ Legislators
- ▭ Precincts
- ▭ Counties
- ~ Rivers
- ~ Lakes / Ponds
- ~ Interstate
- ~ US Highway
- ~ State Highway

Research & Polling, Inc. distributes this map assuming no liability for any errors, omissions, or inaccuracies in the information provided regardless of the cause in reliance upon any maps.



RESEARCH & POLLING INC.

0 0.9 Miles

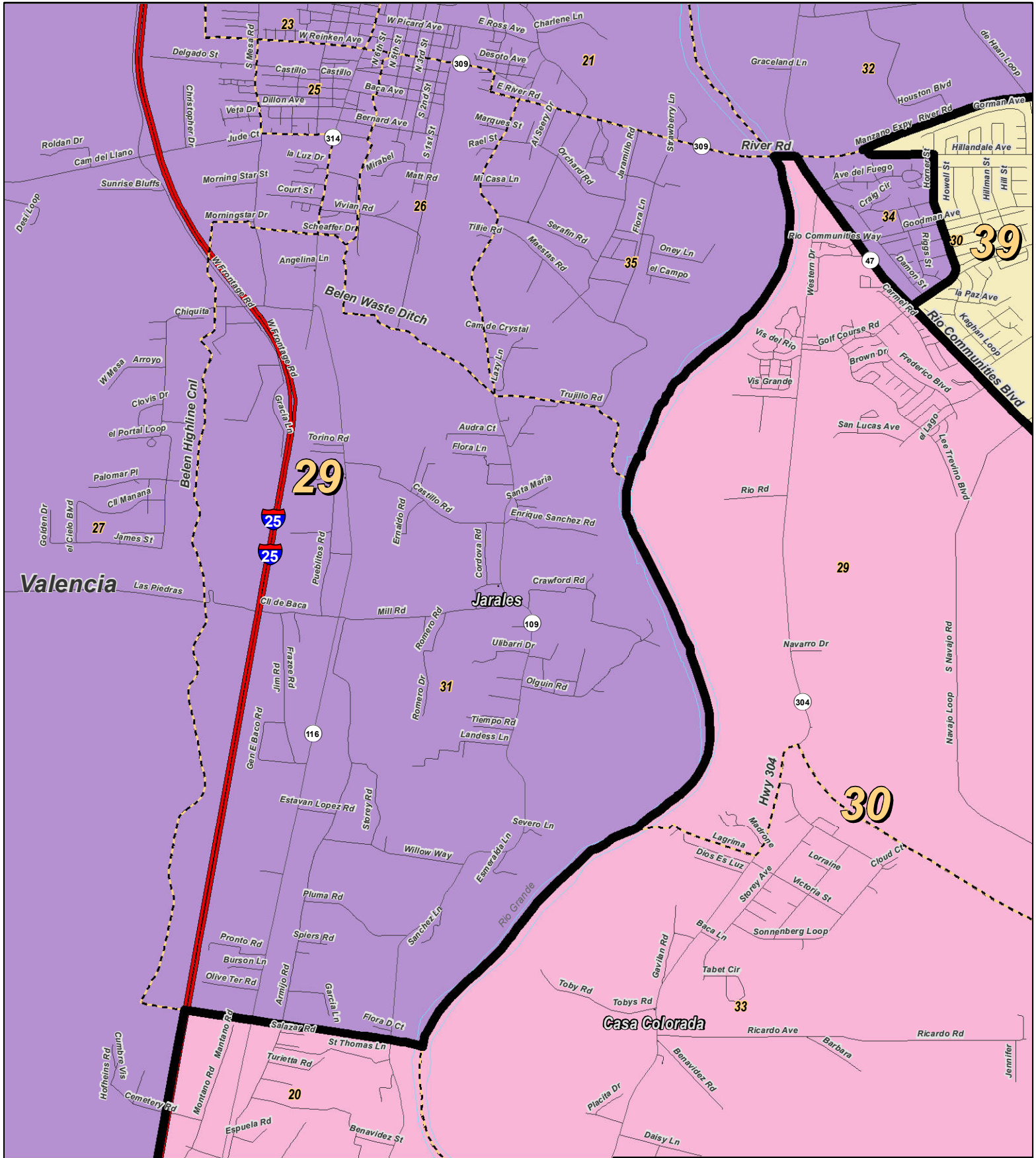
For the New Mexico Legislative Council Service

NEW MEXICO

LEGEND Created: January 23, 2012

★ Legislators	~ Rivers	⚡ Interstate
▭ Precincts	🌊 Lakes / Ponds	🛣 US Highway
▭ Counties		⤵ State Highway

Research & Polling, Inc. distributes this map assuming no liability for any errors, omissions, or inaccuracies in the information provided regardless of the cause in reliance upon any maps.



0 1 Miles

RESEARCH & POLLING
INC.

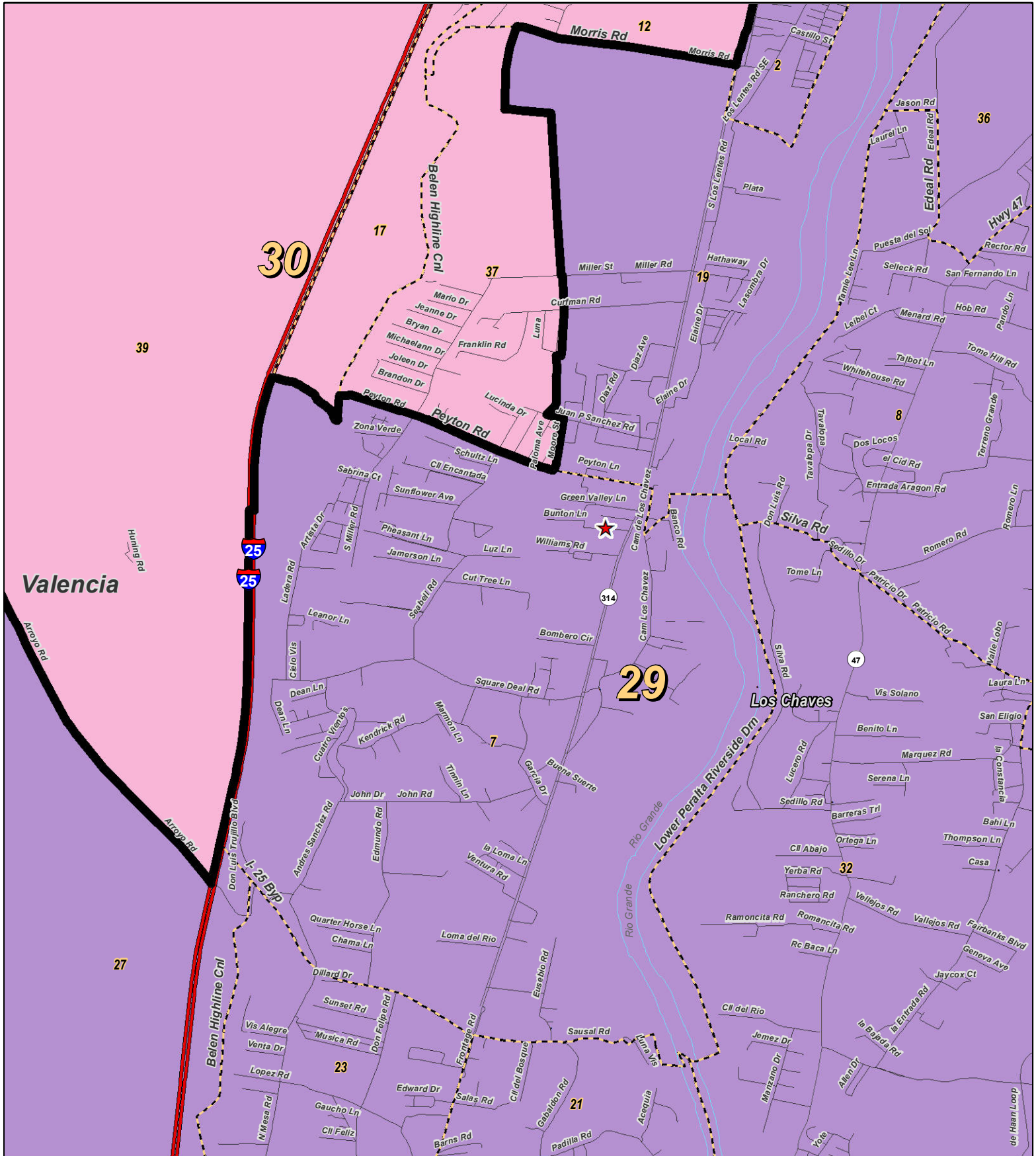
For the New Mexico
Legislative Council Service



LEGEND Created: January 23, 2012

★ Legislators	~ Rivers	⚡ Interstate
▭ Precincts	☪ Lakes / Ponds	⚡ US Highway
▭ Counties		~ State Highway

Research & Polling, Inc. distributes this map assuming no liability for any errors, omissions, or inaccuracies in the information provided regardless of the cause in reliance upon any maps.



RESEARCH & POLLING INC.

For the New Mexico Legislative Council Service

0 1 Miles

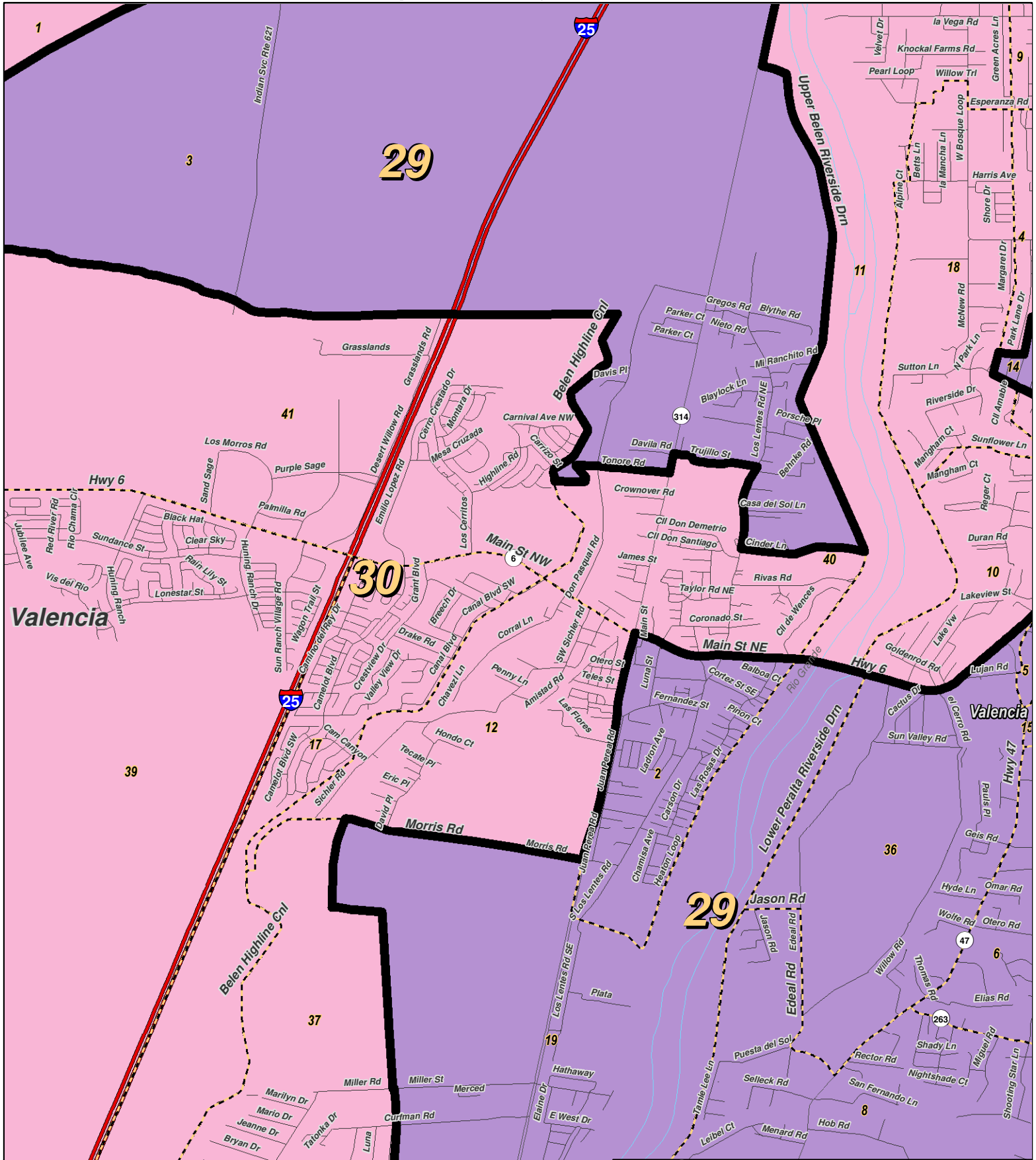
N



LEGEND Created: January 23, 2012

★ Legislators	~ Rivers	~ Interstate
▭ Precincts	~ Lakes / Ponds	~ US Highway
▭ Counties		~ State Highway

Research & Polling, Inc. distributes this map assuming no liability for any errors, omissions, or inaccuracies in the information provided regardless of the cause in reliance upon any maps.



0 1 Miles

RESEARCH & POLLING INC.

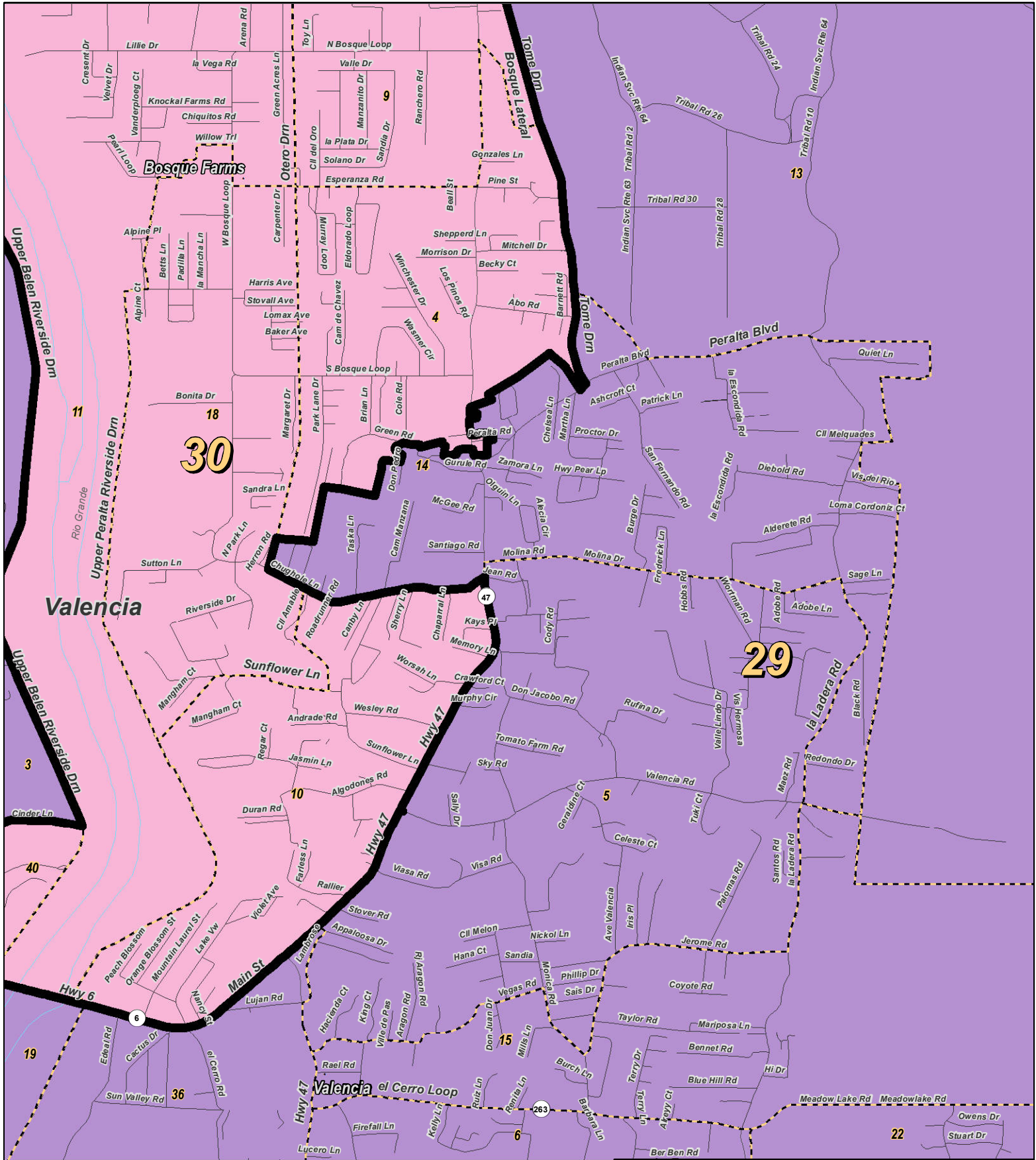
For the New Mexico Legislative Council Service



LEGEND Created: January 18, 2012

- ★ Legislators
- Precincts
- Counties
- ~ Rivers
- ~ Lakes / Ponds
- ~ Interstate
- ~ US Highway
- ~ State Highway

Research & Polling, Inc. distributes this map assuming no liability for any errors, omissions, or inaccuracies in the information provided regardless of the cause in reliance upon any maps.



0 0.9 Miles

RESEARCH & POLLING INC.

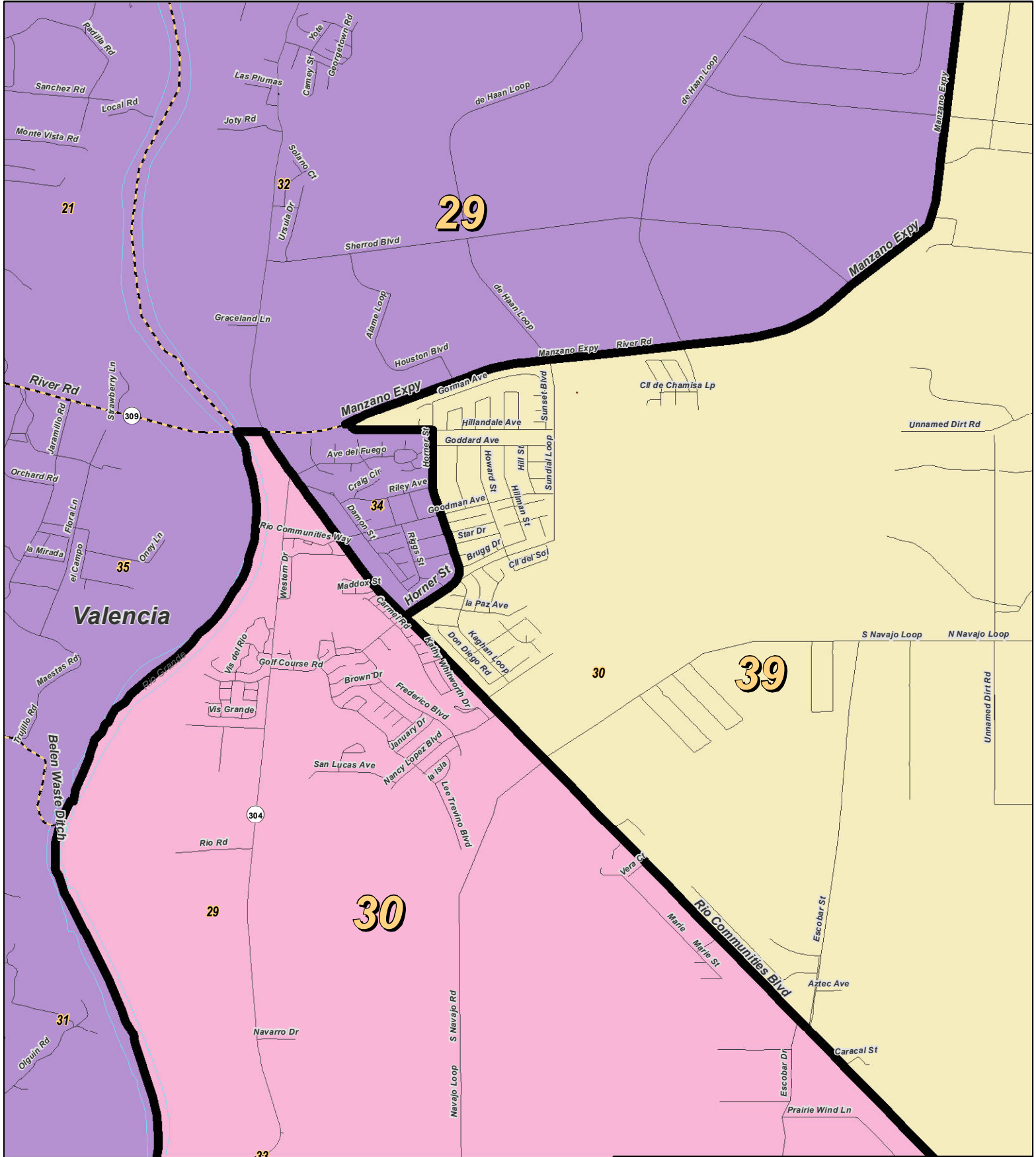
For the New Mexico Legislative Council Service



LEGEND Created: January 23, 2012

★ Legislators	~ Rivers	⚡ Interstate
▭ Precincts	☪ Lakes / Ponds	⚡ US Highway
▭ Counties		~ State Highway

Research & Polling, Inc. distributes this map assuming no liability for any errors, omissions, or inaccuracies in the information provided regardless of the cause in reliance upon any maps.



0 1 Miles

RESEARCH & POLLING INC.

For the New Mexico Legislative Council Service



LEGEND Created: January 23, 2012

★ Legislators	~ Rivers	⚡ Interstate
▭ Precincts	☁ Lakes / Ponds	⚡ US Highway
▭ Counties		~ State Highway

Research & Polling, Inc. distributes this map assuming no liability for any errors, omissions, or inaccuracies in the information provided regardless of the cause in reliance upon any maps.

District: 30

District: 30				Adult Non-Hispanic		
County/ Precinct	Total Population	Adult Hispanic	Total Adult Native American	White	Native American	Black
CI 1	178	13.2%	20.5%	67.5%	15.2%	0.0%
CI 2	357	79.3%	10.2%	14.5%	5.1%	0.0%
CI 3	165	83.3%	3.0%	11.4%	3.0%	0.8%
CI 7	1,033	63.8%	4.3%	32.3%	2.6%	0.1%
CI 8	1,438	51.0%	19.7%	28.5%	15.9%	1.1%
CI 9	2,720	48.7%	16.2%	33.2%	14.3%	2.4%
CI 10	1,366	53.4%	19.7%	26.4%	17.5%	0.9%
CI 11	1,533	54.3%	12.3%	33.4%	9.8%	1.3%
CI 12	743	40.2%	9.4%	45.5%	8.3%	1.9%
CI 13	777	60.3%	14.5%	27.0%	11.1%	1.0%
CI 16	628	39.6%	9.9%	48.8%	7.6%	1.7%
CI 17	3,014	2.0%	97.6%	1.6%	95.6%	0.0%
CI 18	456	67.6%	16.3%	19.4%	9.7%	0.6%
CI 19	800	48.4%	9.1%	39.2%	8.4%	3.4%
CI 20	1,262	3.4%	97.4%	1.3%	94.2%	0.0%
CI 21	810	4.2%	97.2%	1.0%	93.9%	0.0%
CI 22	563	2.9%	96.8%	1.2%	93.9%	0.2%
CI 23	205	6.4%	95.5%	0.6%	91.1%	0.6%
CI 24	786	4.1%	93.5%	2.7%	91.0%	0.4%
CI 25	476	6.0%	96.7%	2.1%	89.9%	0.0%
MC 30	2,277	2.0%	97.8%	1.1%	96.1%	0.1%
SO 15	1,542	2.6%	94.4%	4.2%	91.9%	0.0%
SO 24	439	45.4%	2.2%	52.1%	0.6%	0.6%
VA 1	776	45.5%	16.4%	38.0%	12.9%	1.6%
VA 4	1,304	34.9%	2.9%	60.7%	2.1%	0.4%
VA 9	953	38.2%	5.4%	57.7%	3.3%	0.1%
VA 10	1,272	49.9%	4.1%	47.1%	1.8%	0.2%
VA 11	928	30.5%	3.2%	66.7%	1.5%	0.3%
VA 12	1,631	56.5%	3.5%	40.1%	1.0%	0.9%
VA 17	3,190	53.8%	3.5%	40.0%	2.1%	1.9%
VA 18	971	25.3%	3.1%	71.2%	2.1%	0.3%
VA 20	499	61.0%	2.5%	36.0%	0.5%	1.3%

District: 30

District: 30				Adult Non-Hispanic		
County/ Precinct	Total Population	Adult Hispanic	Total Adult Native American	White	Native American	Black
VA 29	2,125	36.1%	1.9%	59.5%	0.9%	1.8%
VA 33	1,158	65.6%	2.4%	30.8%	1.0%	1.2%
VA 37	1,743	52.6%	6.1%	37.2%	4.7%	3.8%
VA 39	2,971	41.4%	2.7%	52.2%	1.4%	2.4%
VA 40	1,901	54.7%	3.7%	41.0%	2.2%	1.3%
VA 41	2,474	47.8%	3.4%	45.2%	1.9%	2.9%
District Totals	47,464	38.6%	26.7%	33.9%	24.7%	1.2%