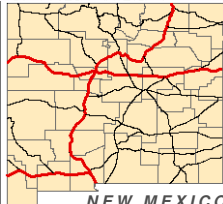


For the New Mexico
 Legislative Council Service



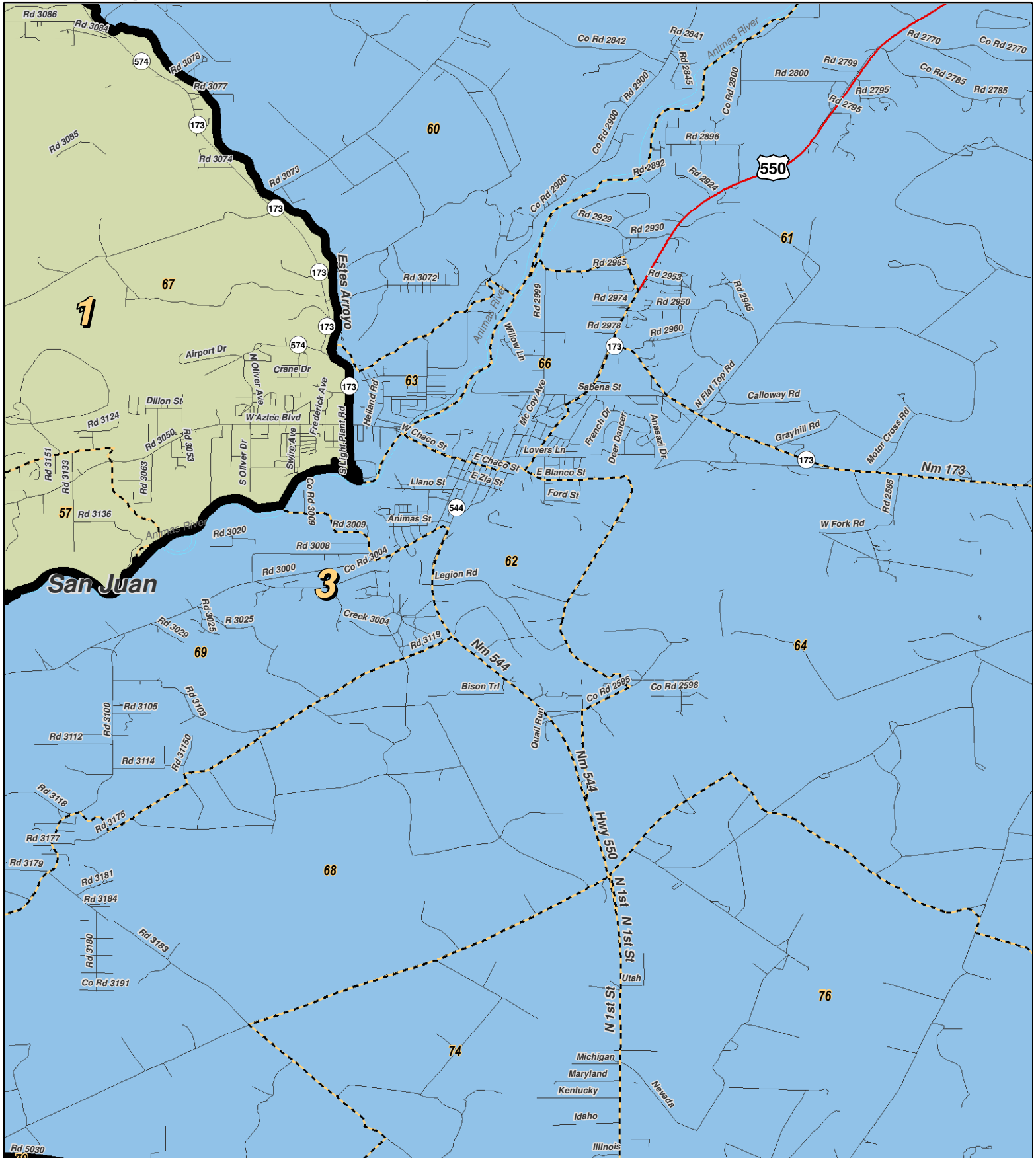
LEGEND

Created: March 02, 2012

- Precincts
- Counties
- Rivers
- Lakes / Ponds
- Interstate
- US Highway
- State Highway

Research & Polling, Inc. distributes this map assuming no liability for any errors, omissions, or inaccuracies in the information provided regardless of the cause in reliance upon any maps.





0 1 Miles

RESEARCH & POLLING
INC.

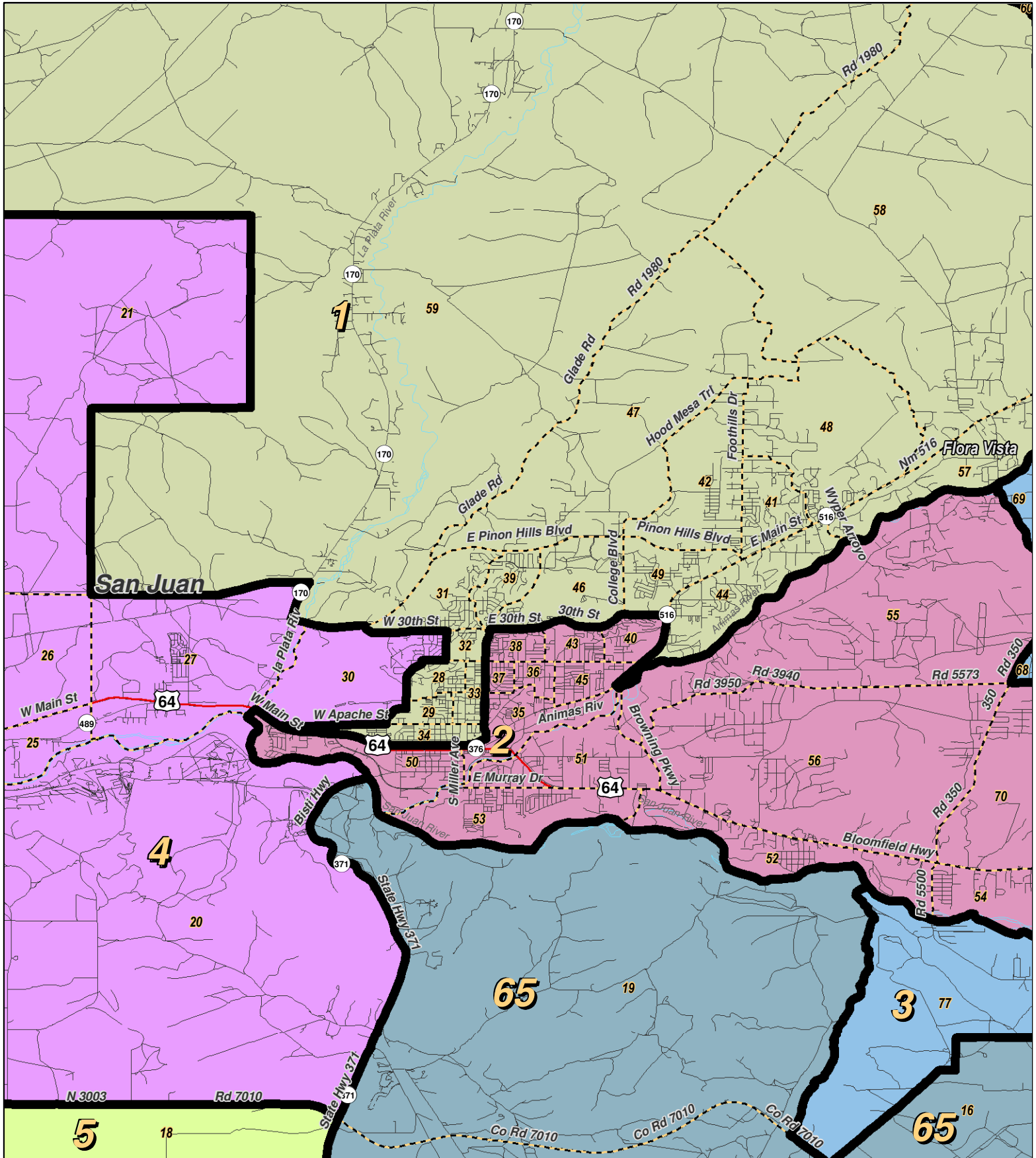
For the New Mexico
Legislative Council Service



LEGEND Created: March 01, 2012

Precincts	Rivers	Interstate
Counties	Lakes / Ponds	US Highway
		State Highway

Research & Polling, Inc. distributes this map assuming no liability for any errors, omissions, or inaccuracies in the information provided regardless of the cause in reliance upon any maps.



RESEARCH & POLLING INC.

For the New Mexico
Legislative Council Service

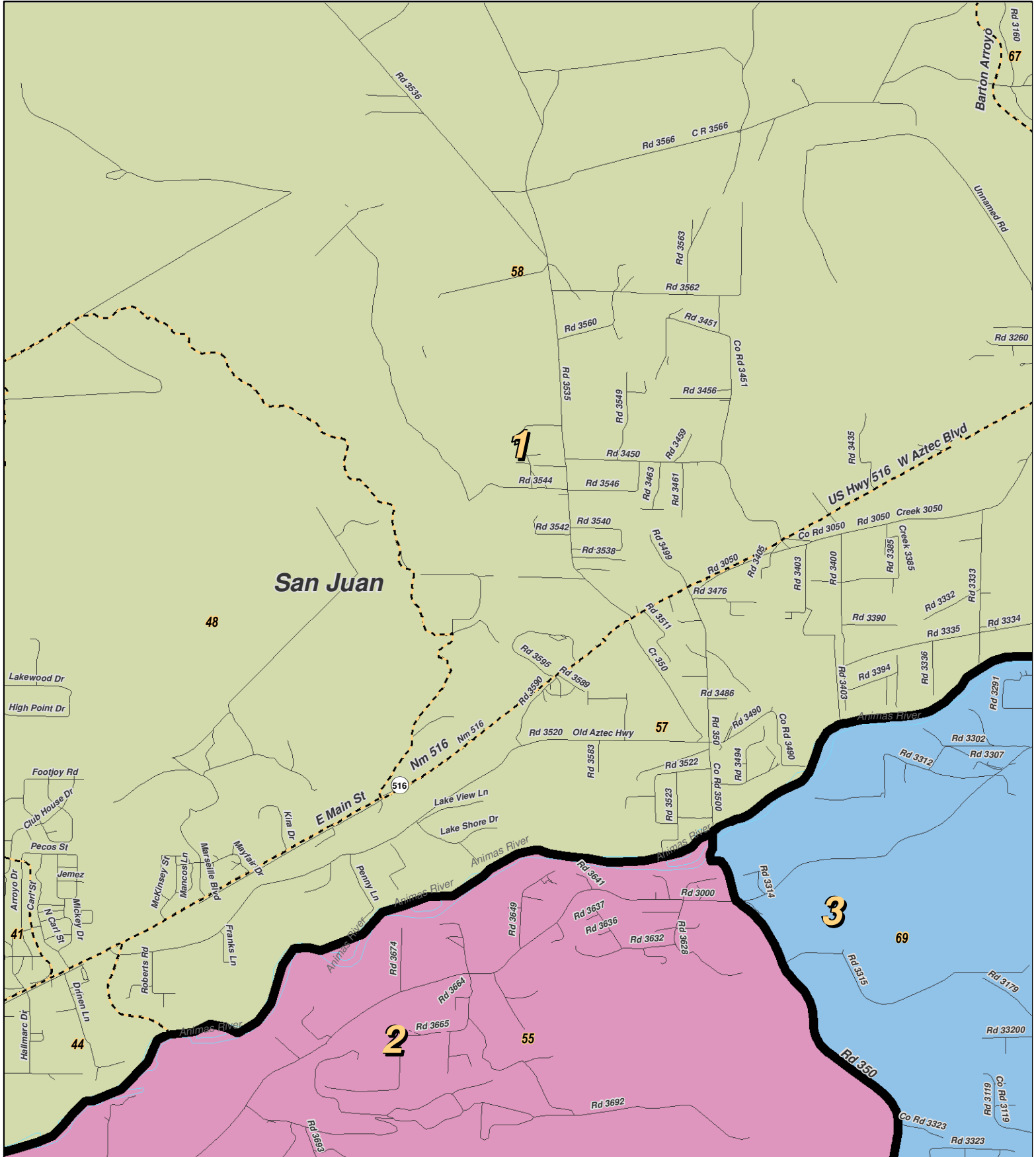
0 1 2 3 Miles



LEGEND Created: March 01, 2012

Precincts	Rivers	Interstate
Counties	Lakes / Ponds	US Highway
		State Highway

Research & Polling, Inc. distributes this map assuming no liability for any errors, omissions, or inaccuracies in the information provided regardless of the cause in reliance upon any maps.



0 0.9 Miles

RESEARCH & POLLING INC.

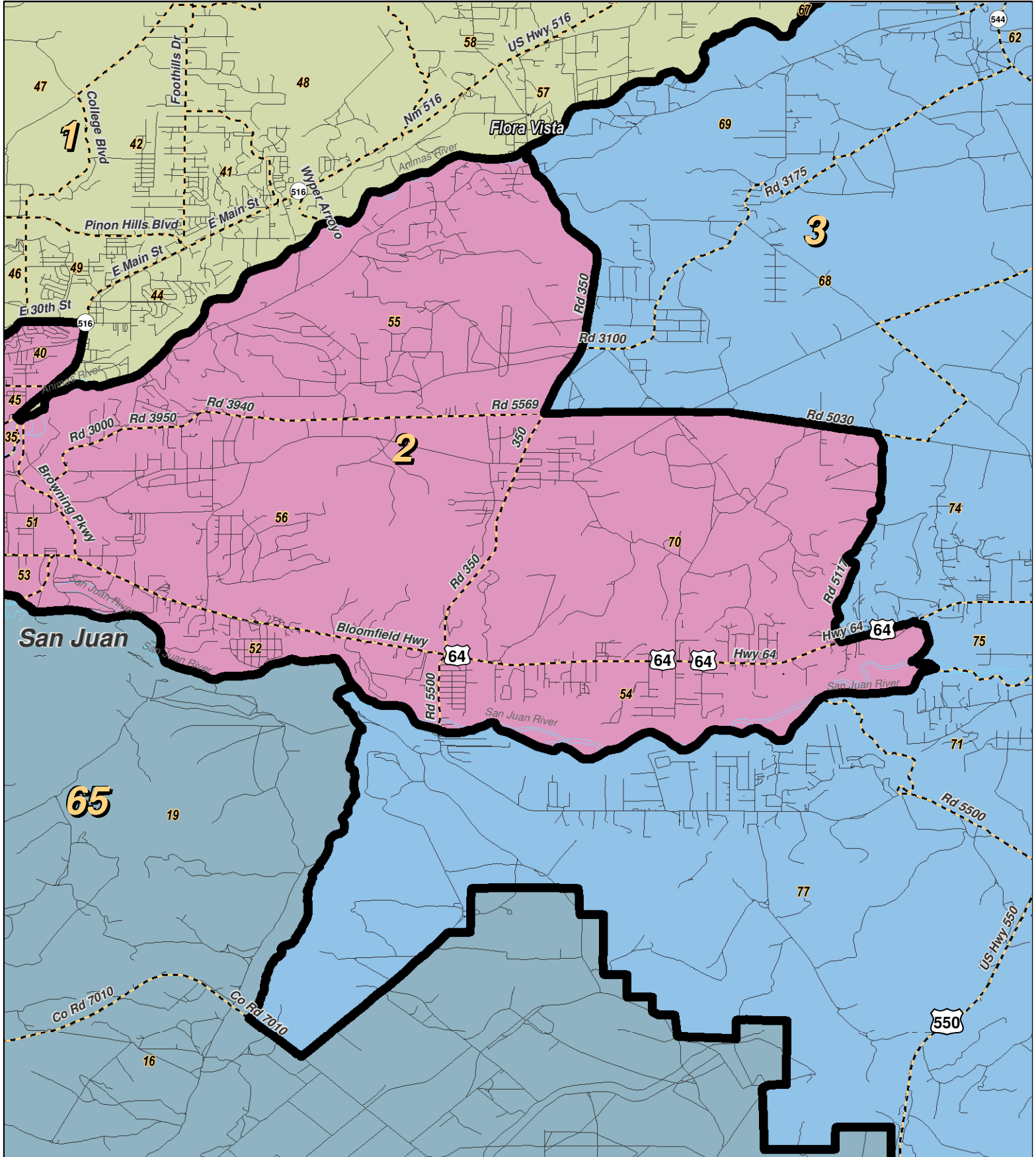
For the New Mexico Legislative Council Service



LEGEND Created: March 01, 2012

Precincts	Rivers	Interstate
Counties	Lakes / Ponds	US Highway
		State Highway

Research & Polling, Inc. distributes this map assuming no liability for any errors, omissions, or inaccuracies in the information provided regardless of the cause in reliance upon any maps.



0 1 2 Miles

RESEARCH & POLLING INC.

For the New Mexico
 Legislative Council Service

N



LEGEND Created: March 01, 2012

Precincts	Rivers	Interstate
Counties	Lakes / Ponds	US Highway
		State Highway

Research & Polling, Inc. distributes this map assuming no liability for any errors, omissions, or inaccuracies in the information provided regardless of the cause in reliance upon any maps.



For the New Mexico
Legislative Council Service

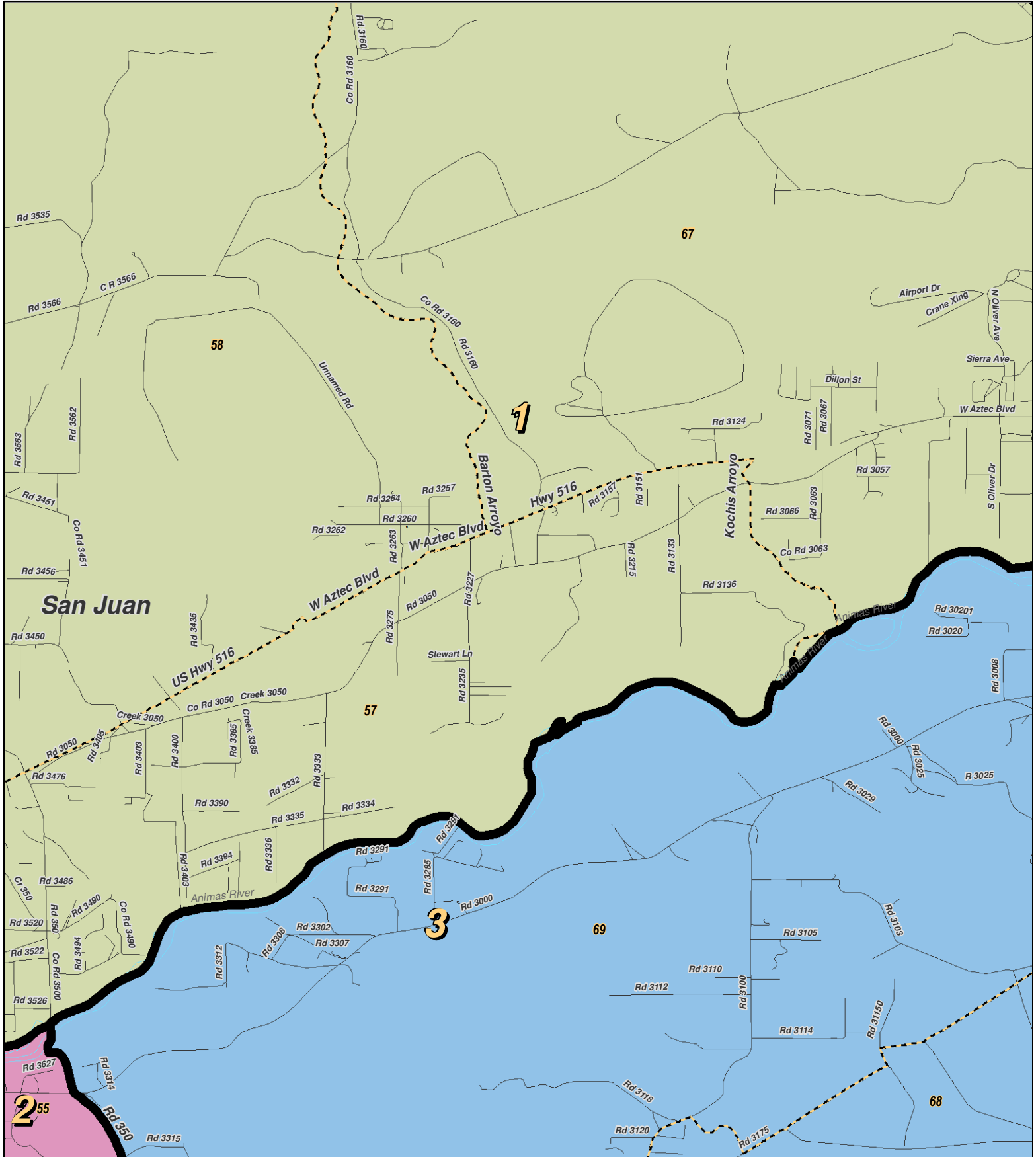
0 0.3 Miles

NEW MEXICO

LEGEND Created: March 01, 2012

Precincts	Rivers	Interstate
Counties	Lakes / Ponds	US Highway
		State Highway

Research & Polling, Inc. distributes this map assuming no liability for any errors, omissions, or inaccuracies in the information provided regardless of the cause in reliance upon any maps.



0 0.9 Miles

RESEARCH & POLLING INC.

For the New Mexico Legislative Council Service



LEGEND Created: March 01, 2012

Precincts	Rivers	Interstate
Counties	Lakes / Ponds	US Highway
		State Highway

Research & Polling, Inc. distributes this map assuming no liability for any errors, omissions, or inaccuracies in the information provided regardless of the cause in reliance upon any maps.

**NM House
 HD_District_Court_1
 (Court Adopted on Remand February 2012)**

District: 1

District: 1				Adult Non-Hispanic		
County/ Precinct	Total Population	Adult Hispanic	Total Adult Native American	White	Native American	Black
SJ 28	1,078	14.3%	12.5%	71.0%	10.7%	1.0%
SJ 29	1,123	19.5%	26.0%	53.8%	21.8%	1.2%
SJ 31	2,389	10.5%	5.6%	82.2%	4.6%	0.4%
SJ 32	919	18.9%	30.3%	50.3%	26.9%	0.5%
SJ 33	1,500	17.3%	21.8%	58.3%	19.4%	2.7%
SJ 34	1,858	18.5%	37.8%	41.7%	34.8%	2.1%
SJ 39	1,793	9.2%	7.4%	80.9%	6.3%	0.8%
SJ 41	1,703	11.8%	3.9%	83.2%	2.9%	0.2%
SJ 42	1,418	11.2%	7.1%	80.8%	5.4%	0.4%
SJ 44	2,314	22.4%	15.4%	61.3%	13.8%	0.7%
SJ 46	1,395	14.8%	10.6%	71.3%	10.0%	1.8%
SJ 47	411	13.6%	13.0%	72.6%	11.1%	0.6%
SJ 48	1,135	16.4%	7.1%	76.0%	5.4%	0.0%
SJ 49	2,257	16.0%	11.3%	70.3%	9.4%	0.8%
SJ 57	1,870	12.8%	4.8%	81.7%	3.8%	0.2%
SJ 58	1,410	22.6%	5.2%	72.8%	3.0%	0.0%
SJ 59	2,350	12.1%	11.5%	75.6%	9.7%	0.4%
SJ 67	2,713	20.7%	8.1%	70.6%	6.6%	0.2%
District Totals	29,636	15.6%	12.5%	70.5%	10.7%	0.8%