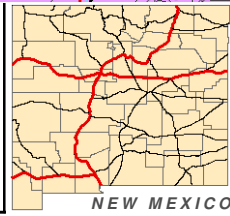


0 1 2 3 Miles

RESEARCH & POLLING INC.

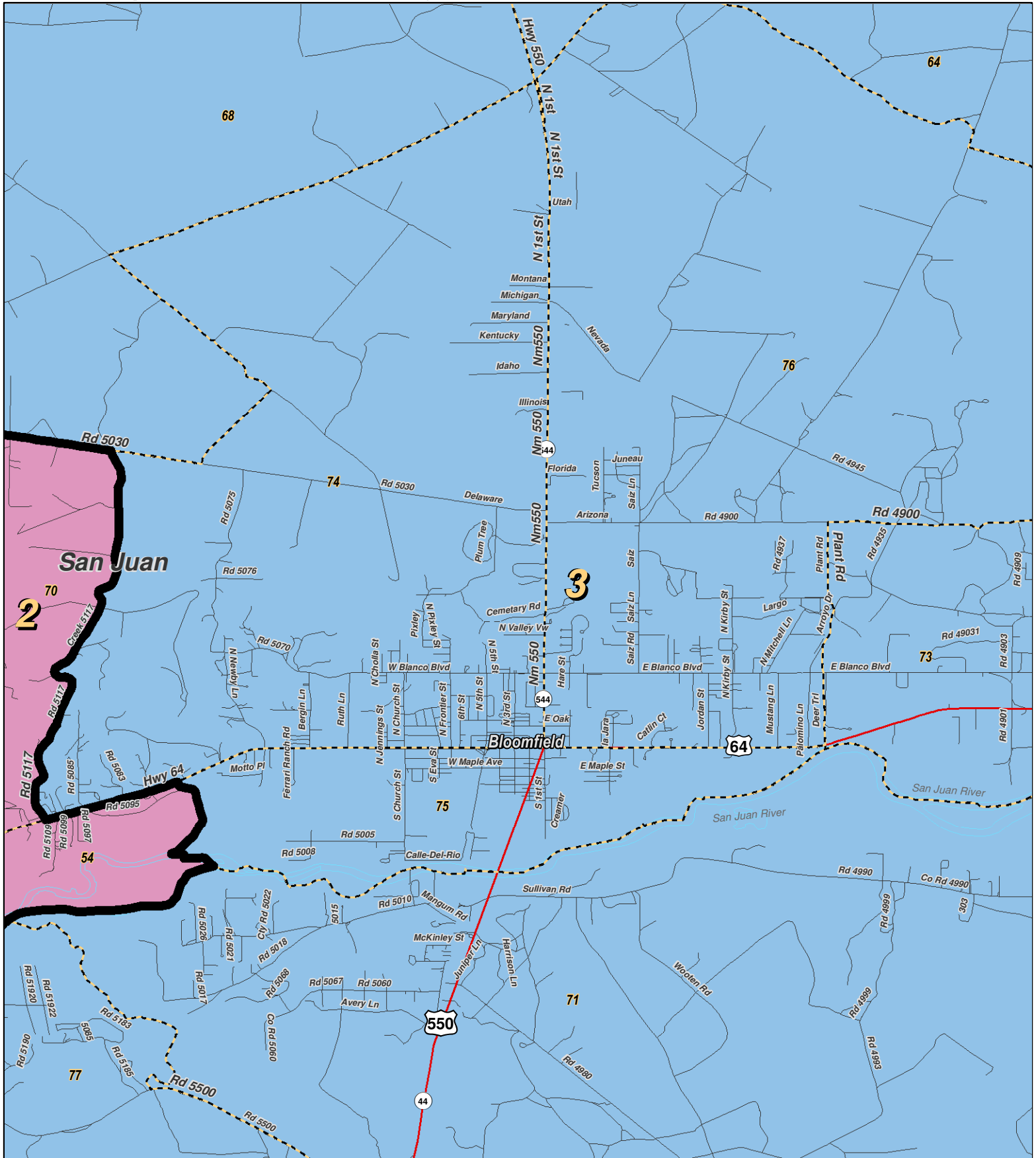
For the New Mexico Legislative Council Service



LEGEND Created: March 02, 2012

Precincts	Rivers	Interstate
Counties	Lakes / Ponds	US Highway
		State Highway

Research & Polling, Inc. distributes this map assuming no liability for any errors, omissions, or inaccuracies in the information provided regardless of the cause in reliance upon any maps.



For the New Mexico
Legislative Council Service

0 1 Miles

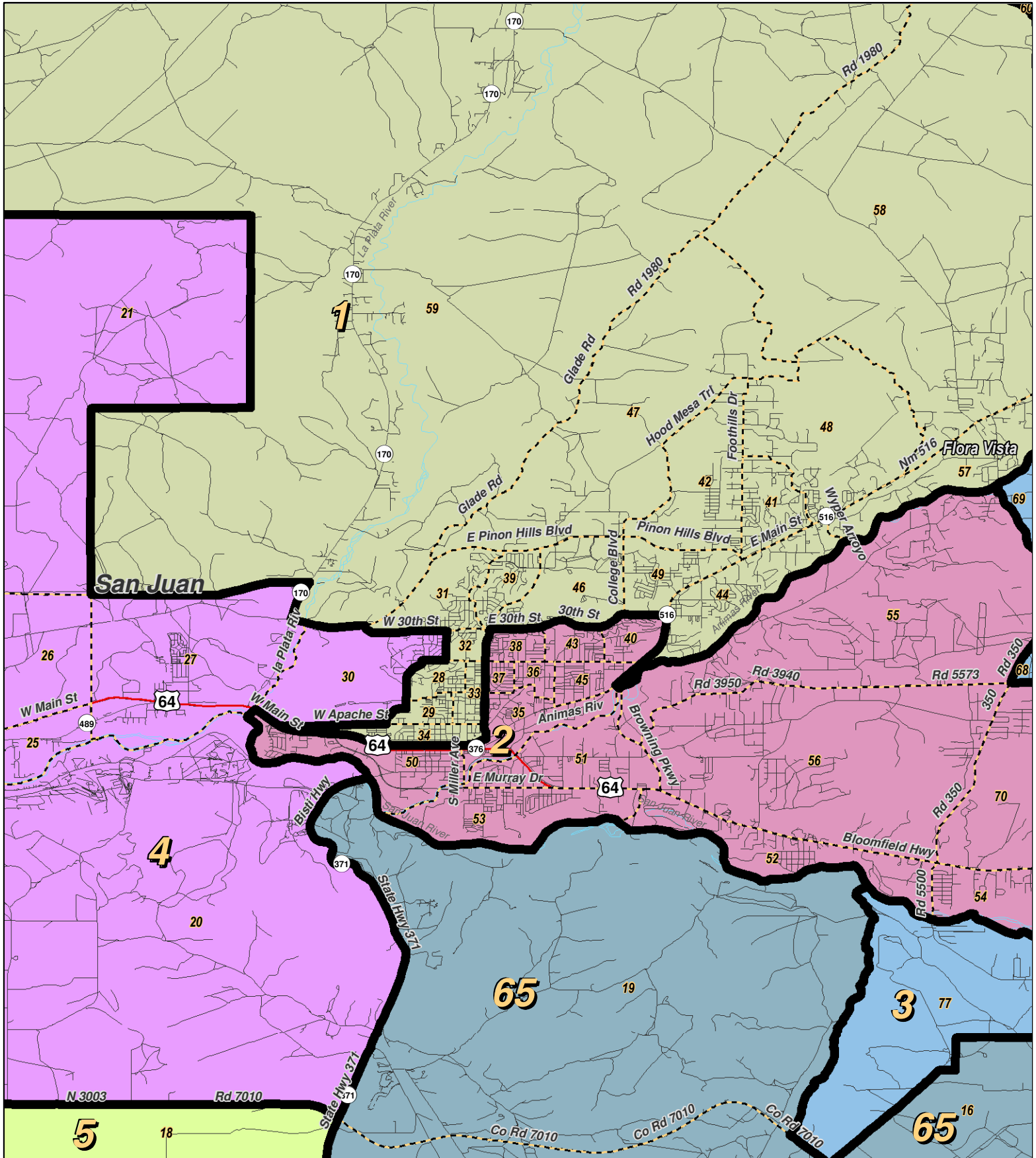
NEW MEXICO

LEGEND

Created: March 01, 2012

Precincts	Rivers	Interstate
Counties	Lakes / Ponds	US Highway
		State Highway

Research & Polling, Inc. distributes this map assuming no liability for any errors, omissions, or inaccuracies in the information provided regardless of the cause in reliance upon any maps.



RESEARCH & POLLING INC.

For the New Mexico
 Legislative Council Service

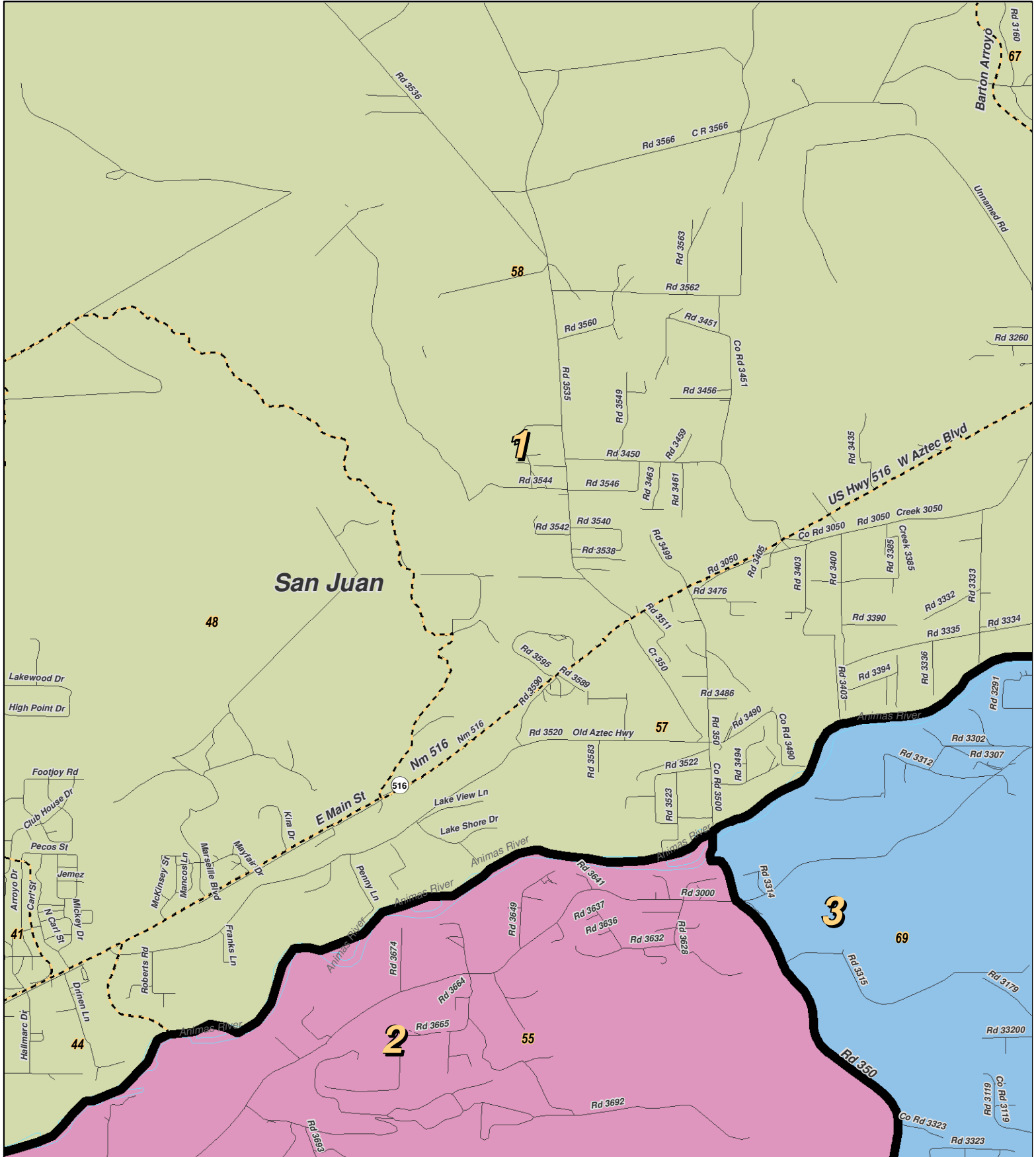
0 1 2 3 Miles



LEGEND Created: March 01, 2012

Precincts	Rivers	Interstate
Counties	Lakes / Ponds	US Highway
		State Highway

Research & Polling, Inc. distributes this map assuming no liability for any errors, omissions, or inaccuracies in the information provided regardless of the cause in reliance upon any maps.



0 0.9 Miles

RESEARCH & POLLING INC.

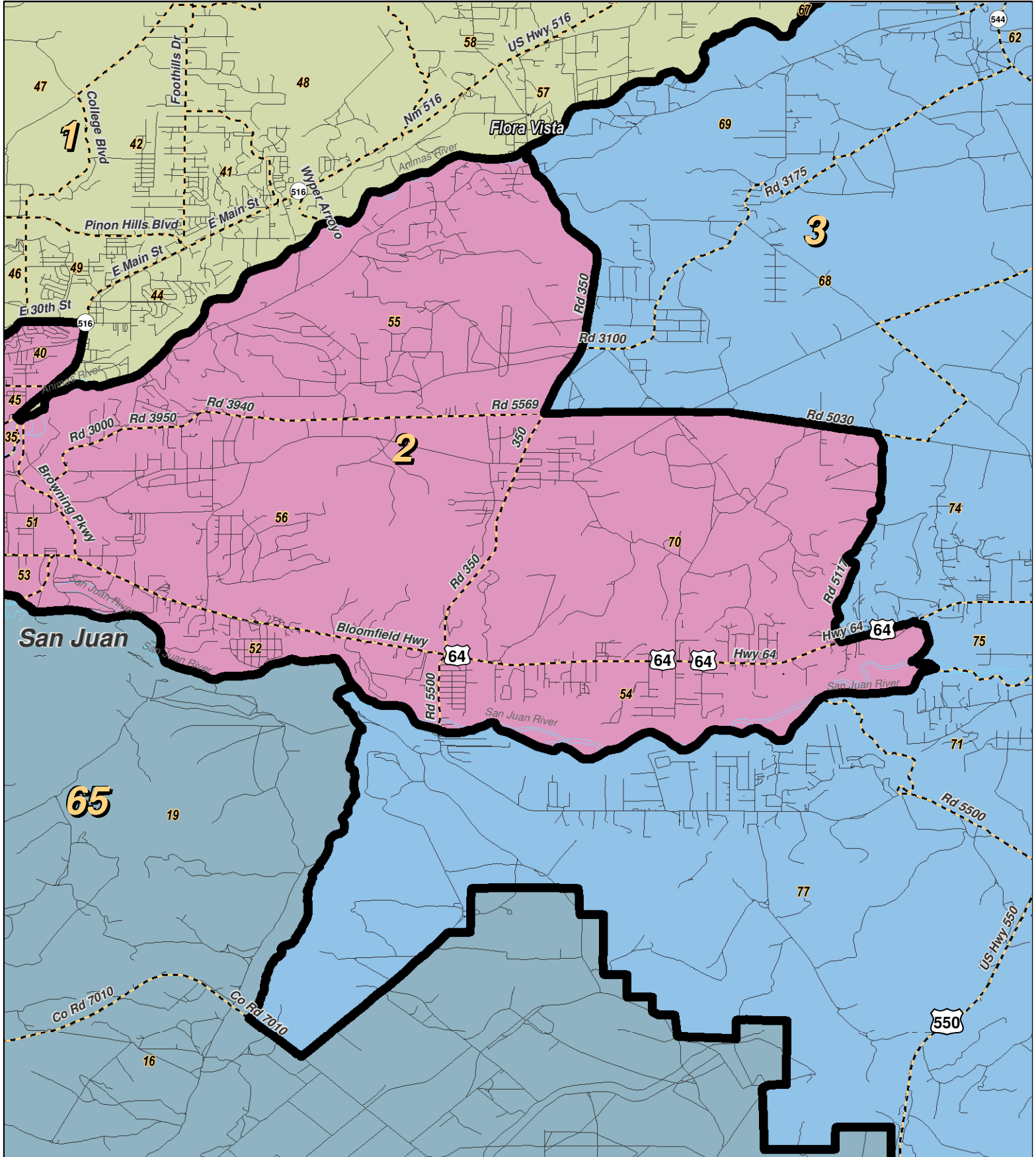
For the New Mexico Legislative Council Service



LEGEND Created: March 01, 2012

Precincts	Rivers	Interstate
Counties	Lakes / Ponds	US Highway
		State Highway

Research & Polling, Inc. distributes this map assuming no liability for any errors, omissions, or inaccuracies in the information provided regardless of the cause in reliance upon any maps.



0 1 2 Miles

RESEARCH & POLLING INC.

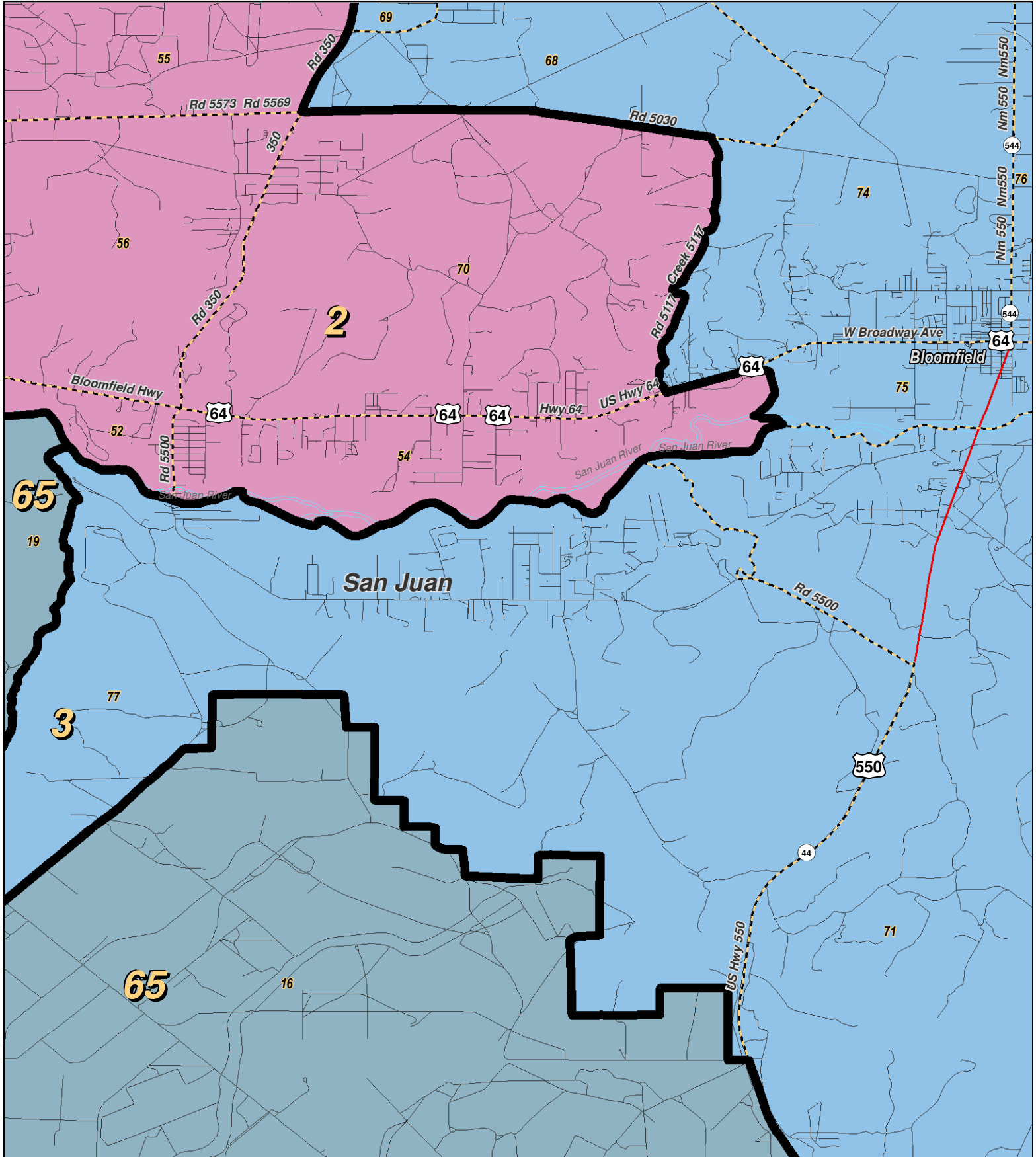
For the New Mexico Legislative Council Service



LEGEND Created: March 01, 2012

Precincts	Rivers	Interstate
Counties	Lakes / Ponds	US Highway
		State Highway

Research & Polling, Inc. distributes this map assuming no liability for any errors, omissions, or inaccuracies in the information provided regardless of the cause in reliance upon any maps.



0 1 2 Miles

RESEARCH & POLLING INC.

For the New Mexico Legislative Council Service



LEGEND Created: March 01, 2012

Precincts	Rivers	Interstate
Counties	Lakes / Ponds	US Highway
		State Highway

Research & Polling, Inc. distributes this map assuming no liability for any errors, omissions, or inaccuracies in the information provided regardless of the cause in reliance upon any maps.

**NM House
 HD_District_Court_1
 (Court Adopted on Remand February 2012)**

District: 2

District: 2				Adult Non-Hispanic		
County/ Precinct	Total Population	Adult Hispanic	Total Adult Native American	White	Native American	Black
SJ 35	1,341	23.4%	20.2%	53.9%	18.3%	1.0%
SJ 36	1,077	21.7%	16.9%	60.5%	15.9%	0.6%
SJ 37	1,103	16.5%	7.0%	76.5%	5.0%	0.1%
SJ 38	1,770	16.5%	13.7%	68.9%	12.8%	0.6%
SJ 40	1,654	19.9%	21.9%	57.5%	19.7%	0.7%
SJ 43	1,425	19.5%	26.0%	53.5%	23.6%	1.1%
SJ 45	2,278	25.4%	30.6%	42.7%	29.1%	0.8%
SJ 50	2,066	17.4%	39.2%	42.8%	37.6%	0.5%
SJ 51	2,121	37.4%	27.3%	35.8%	25.4%	0.3%
SJ 52	1,238	27.6%	18.4%	52.8%	16.6%	1.4%
SJ 53	2,904	33.3%	22.0%	45.1%	19.2%	0.8%
SJ 54	2,405	35.3%	14.5%	49.6%	12.4%	0.8%
SJ 55	1,809	13.3%	12.6%	73.2%	11.7%	0.1%
SJ 56	4,002	24.6%	39.9%	35.9%	36.7%	0.9%
SJ 70	1,787	32.0%	19.5%	49.1%	17.2%	0.3%
District Totals	28,980	25.2%	24.0%	50.4%	22.0%	0.7%