

RESEARCH & POLLING INC.

For the New Mexico Legislative Council Service

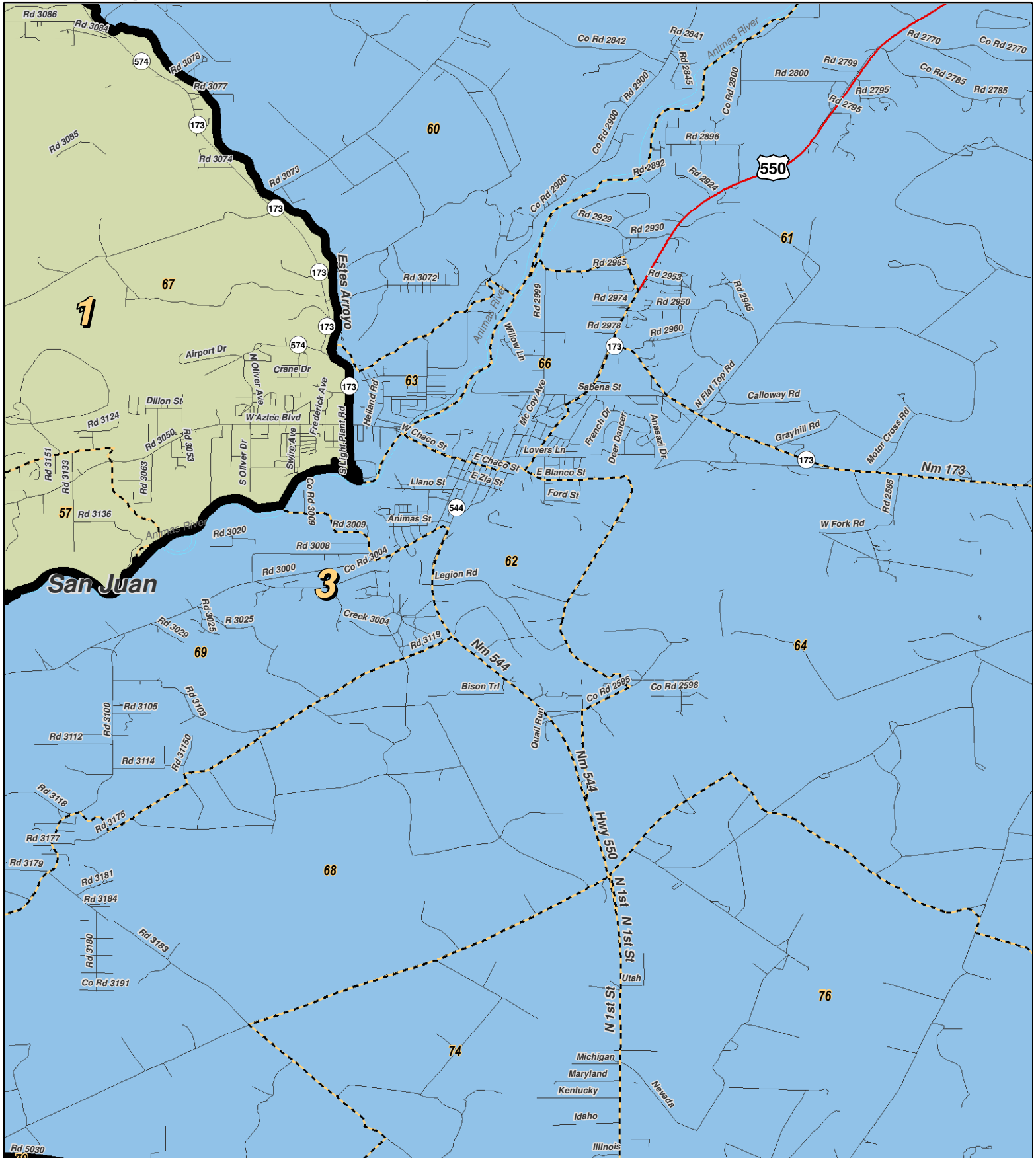
0 2 4 6 8 Miles



LEGEND Created: March 02, 2012

Precincts	Rivers	Interstate
Counties	Lakes / Ponds	US Highway
		State Highway

Research & Polling, Inc. distributes this map assuming no liability for any errors, omissions, or inaccuracies in the information provided regardless of the cause in reliance upon any maps.



0 1 Miles

RESEARCH & POLLING
INC.

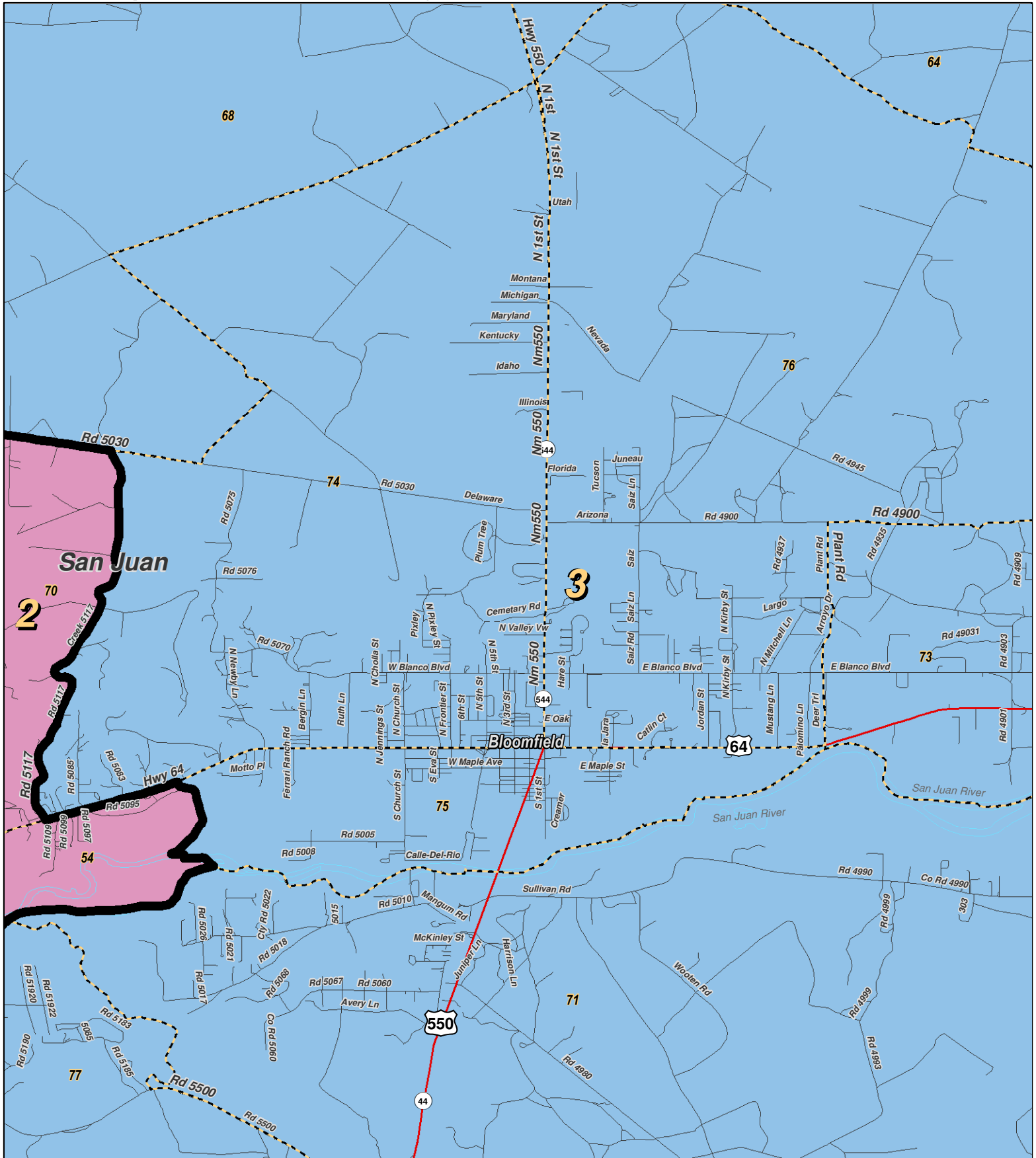
For the New Mexico
Legislative Council Service



LEGEND Created: March 01, 2012

Precincts	Rivers	Interstate
Counties	Lakes / Ponds	US Highway
		State Highway

Research & Polling, Inc. distributes this map assuming no liability for any errors, omissions, or inaccuracies in the information provided regardless of the cause in reliance upon any maps.



0 1 Miles

RESEARCH & POLLING INC.

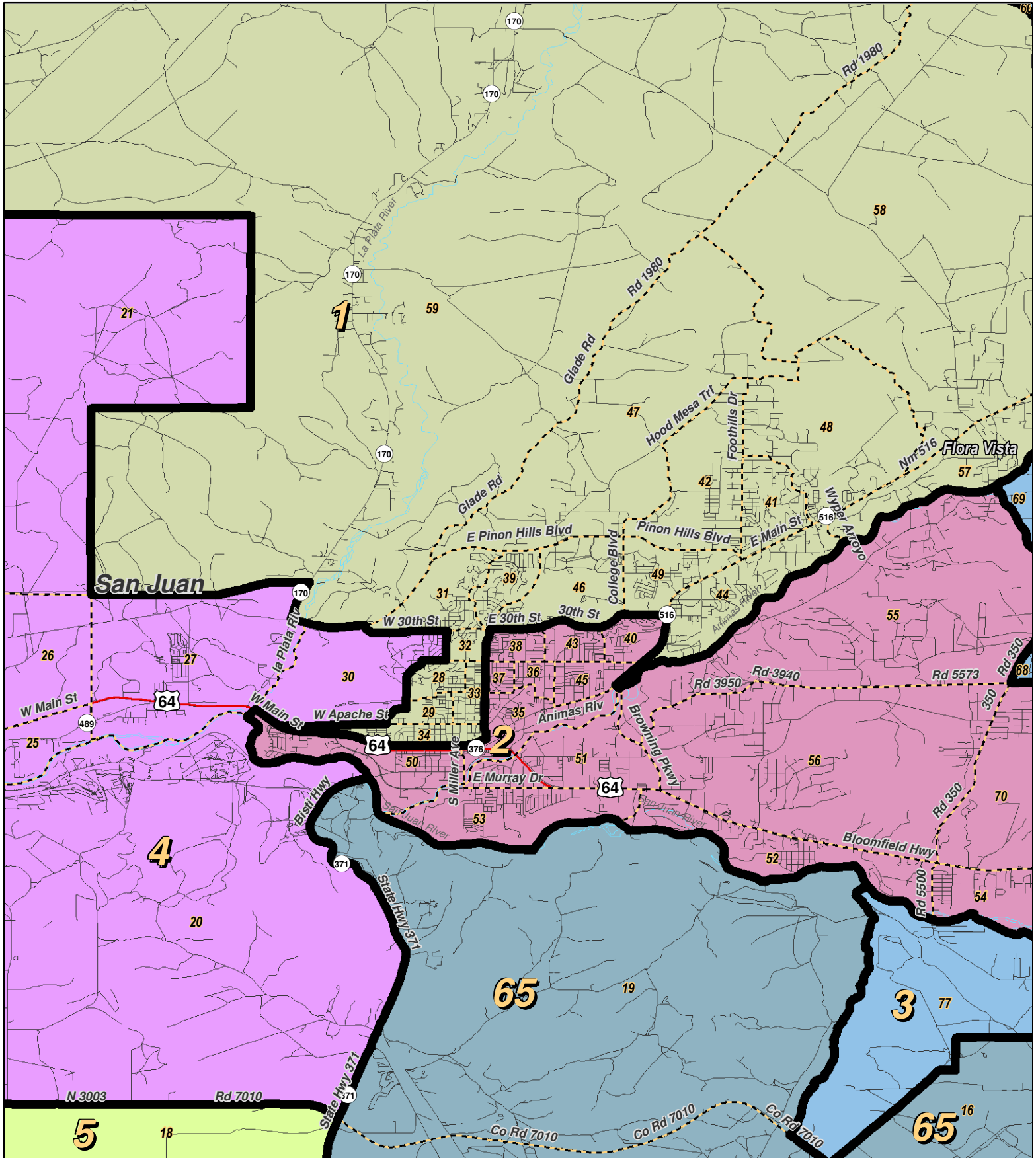
For the New Mexico
Legislative Council Service



LEGEND Created: March 01, 2012

Precincts	Rivers	Interstate
Counties	Lakes / Ponds	US Highway
		State Highway

Research & Polling, Inc. distributes this map assuming no liability for any errors, omissions, or inaccuracies in the information provided regardless of the cause in reliance upon any maps.



RESEARCH & POLLING INC.

For the New Mexico
Legislative Council Service

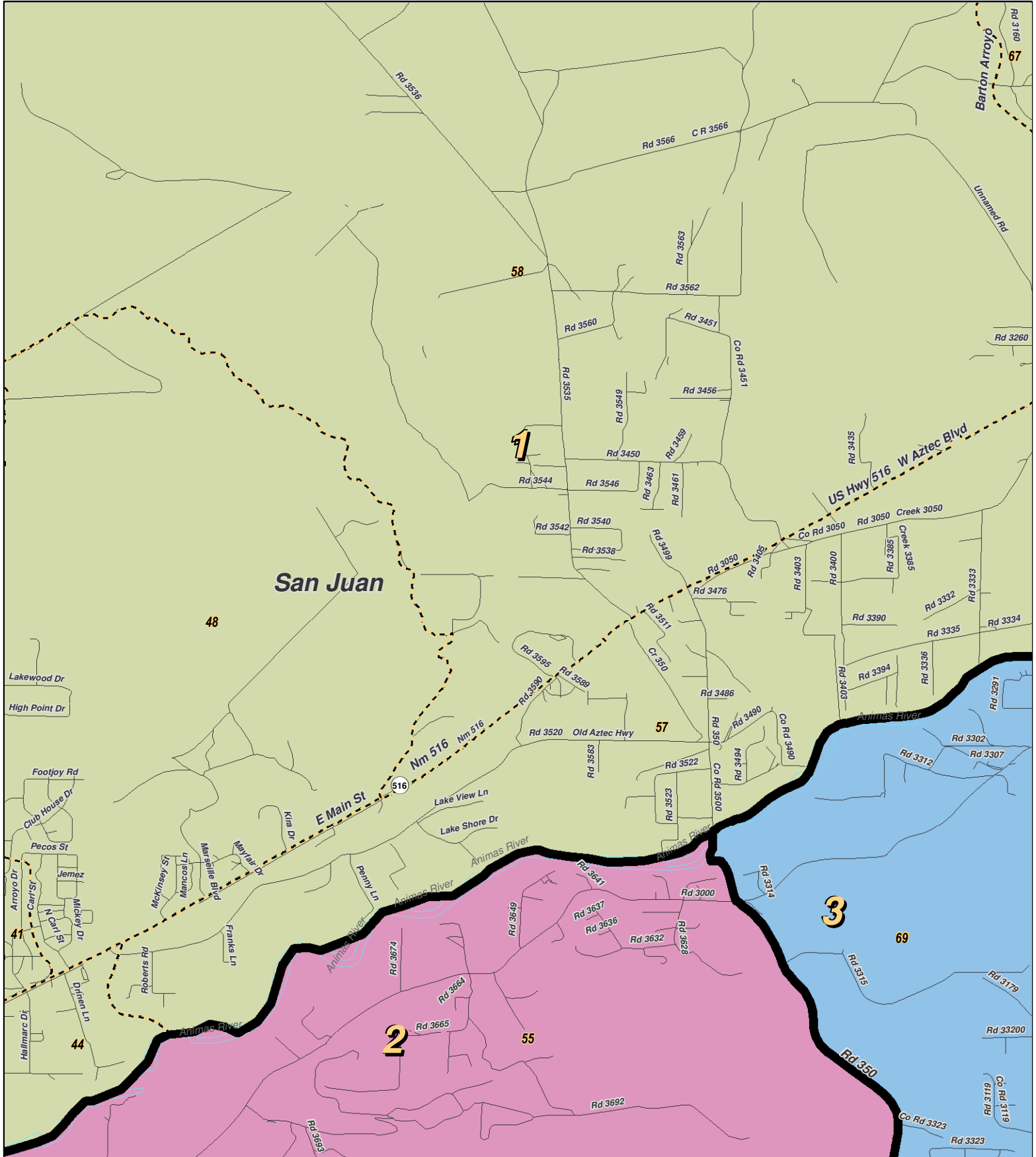
0 1 2 3 Miles



LEGEND Created: March 01, 2012

Precincts	Rivers	Interstate
Counties	Lakes / Ponds	US Highway
		State Highway

Research & Polling, Inc. distributes this map assuming no liability for any errors, omissions, or inaccuracies in the information provided regardless of the cause in reliance upon any maps.



0 0.9 Miles

RESEARCH & POLLING INC.

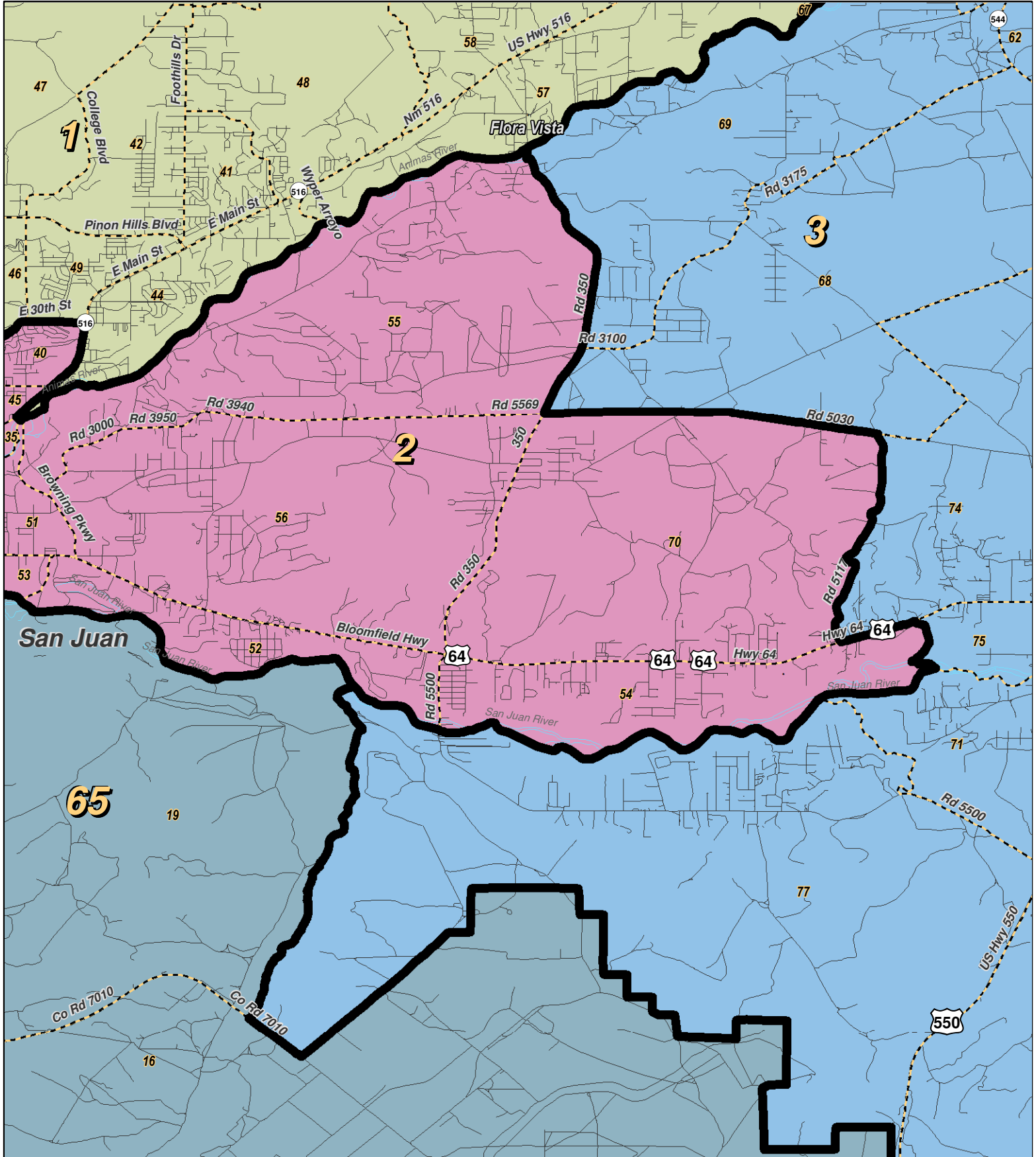
For the New Mexico Legislative Council Service



LEGEND Created: March 01, 2012

Precincts	Rivers	Interstate
Counties	Lakes / Ponds	US Highway
		State Highway

Research & Polling, Inc. distributes this map assuming no liability for any errors, omissions, or inaccuracies in the information provided regardless of the cause in reliance upon any maps.



0 1 2 Miles

RESEARCH & POLLING INC.

For the New Mexico Legislative Council Service



LEGEND Created: March 01, 2012

Precincts	Rivers	Interstate
Counties	Lakes / Ponds	US Highway
		State Highway

Research & Polling, Inc. distributes this map assuming no liability for any errors, omissions, or inaccuracies in the information provided regardless of the cause in reliance upon any maps.



RESEARCH & POLLING
INC.

0 0.3 Miles

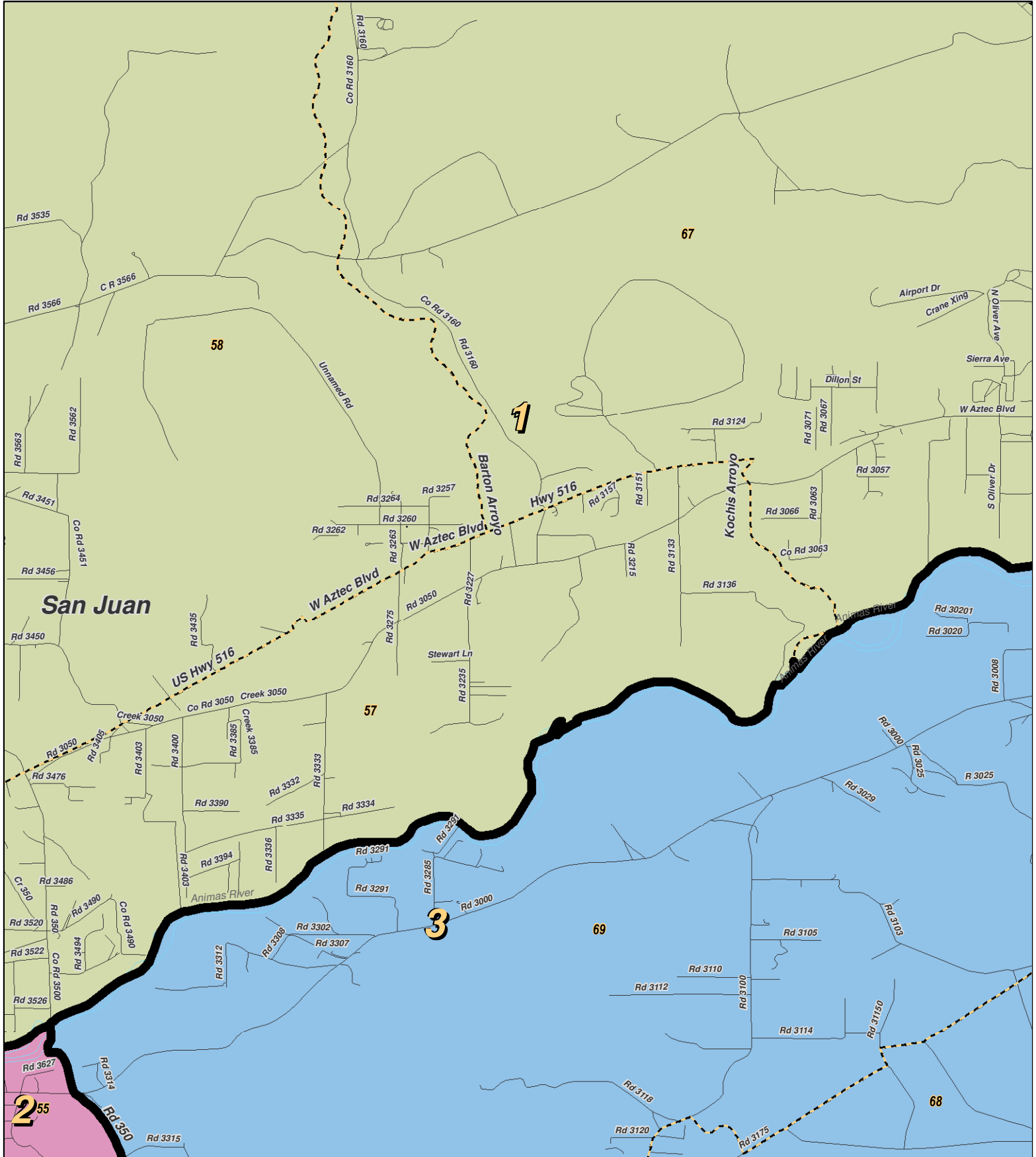
For the New Mexico
Legislative Council Service

NEW MEXICO

LEGEND Created: March 01, 2012

Precincts	Rivers	Interstate
Counties	Lakes / Ponds	US Highway
		State Highway

Research & Polling, Inc. distributes this map assuming no liability for any errors, omissions, or inaccuracies in the information provided regardless of the cause in reliance upon any maps.



0 0.9 Miles

RESEARCH & POLLING INC.

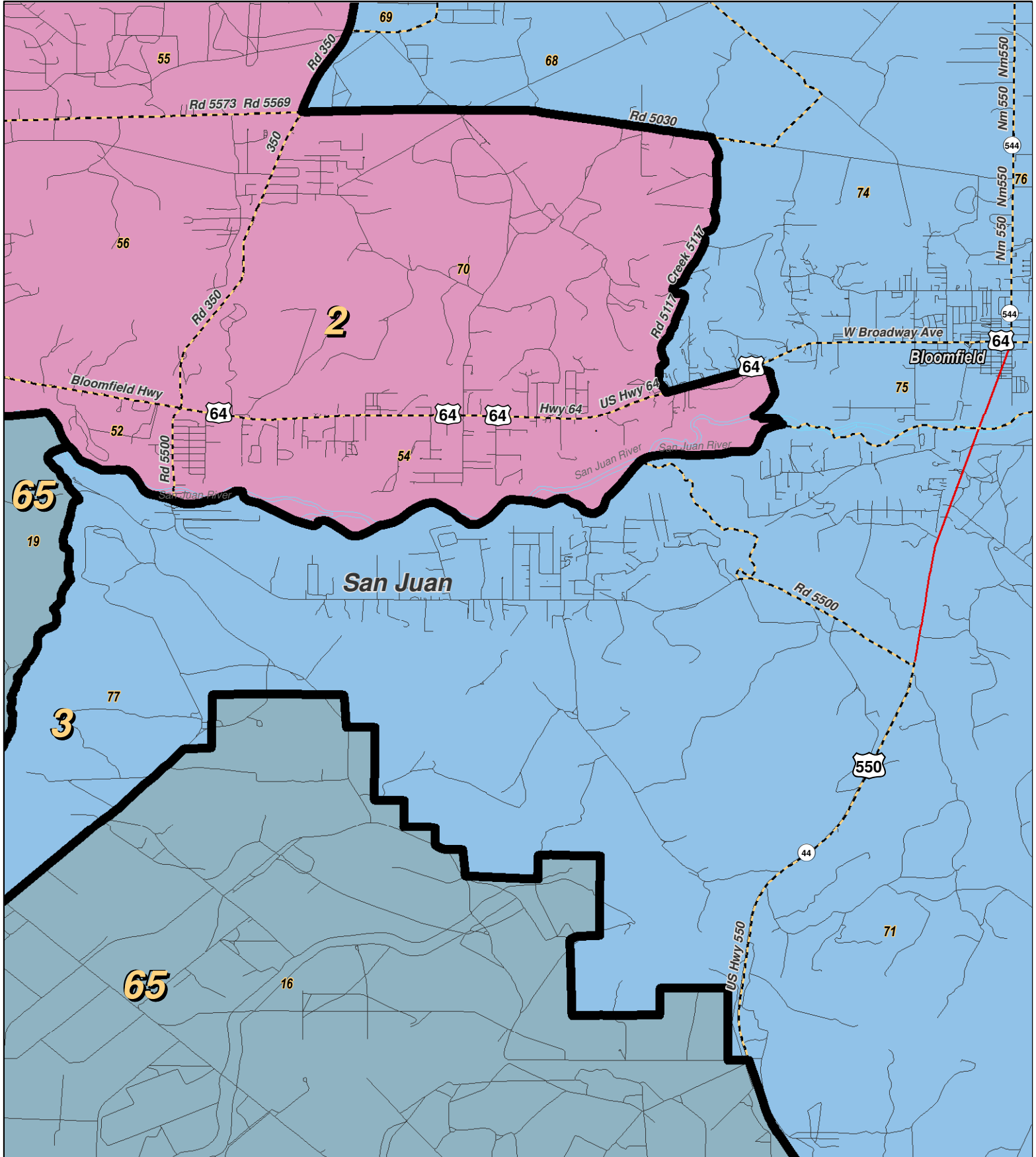
For the New Mexico Legislative Council Service



LEGEND Created: March 01, 2012

Precincts	Rivers	Interstate
Counties	Lakes / Ponds	US Highway
		State Highway

Research & Polling, Inc. distributes this map assuming no liability for any errors, omissions, or inaccuracies in the information provided regardless of the cause in reliance upon any maps.



0 1 2 Miles

RESEARCH & POLLING INC.

For the New Mexico Legislative Council Service



LEGEND Created: March 01, 2012

Precincts	Rivers	Interstate
Counties	Lakes / Ponds	US Highway
		State Highway

Research & Polling, Inc. distributes this map assuming no liability for any errors, omissions, or inaccuracies in the information provided regardless of the cause in reliance upon any maps.

**NM House
 HD_District_Court_1
 (Court Adopted on Remand February 2012)**

District: 3

				Adult Non-Hispanic		
County/ Precinct	Total Population	Adult Hispanic	Total Adult Native American	White	Native American	Black
SJ 60	854	15.3%	4.1%	79.5%	2.3%	0.5%
SJ 61	2,173	12.1%	3.3%	84.1%	2.4%	0.2%
SJ 62	1,429	20.2%	7.1%	72.8%	4.2%	0.3%
SJ 63	1,672	21.6%	14.3%	64.1%	12.3%	0.3%
SJ 64	1,166	21.1%	7.2%	72.1%	5.2%	0.1%
SJ 65	1,135	8.3%	2.7%	89.0%	2.2%	0.0%
SJ 66	1,108	17.9%	7.0%	75.0%	5.1%	0.2%
SJ 68	1,386	23.5%	18.8%	58.4%	15.8%	1.0%
SJ 69	2,239	16.4%	10.8%	72.0%	8.5%	0.4%
SJ 71	2,070	17.5%	23.8%	59.1%	21.2%	0.0%
SJ 72	1,755	39.1%	4.2%	56.9%	2.0%	0.1%
SJ 73	1,609	53.9%	6.7%	39.6%	5.0%	0.2%
SJ 74	3,608	27.6%	19.6%	52.9%	17.5%	0.4%
SJ 75	1,802	33.1%	18.1%	48.5%	15.9%	0.6%
SJ 76	2,736	25.6%	14.0%	59.9%	12.2%	0.4%
SJ 77	2,110	24.1%	11.3%	64.8%	9.1%	0.5%
District Totals	28,852	24.2%	11.8%	64.0%	9.8%	0.3%