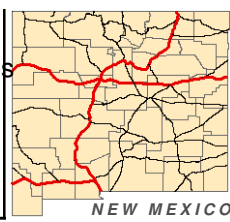
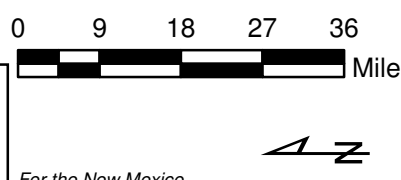


RESEARCH & POLLING, INC.

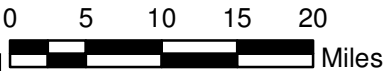
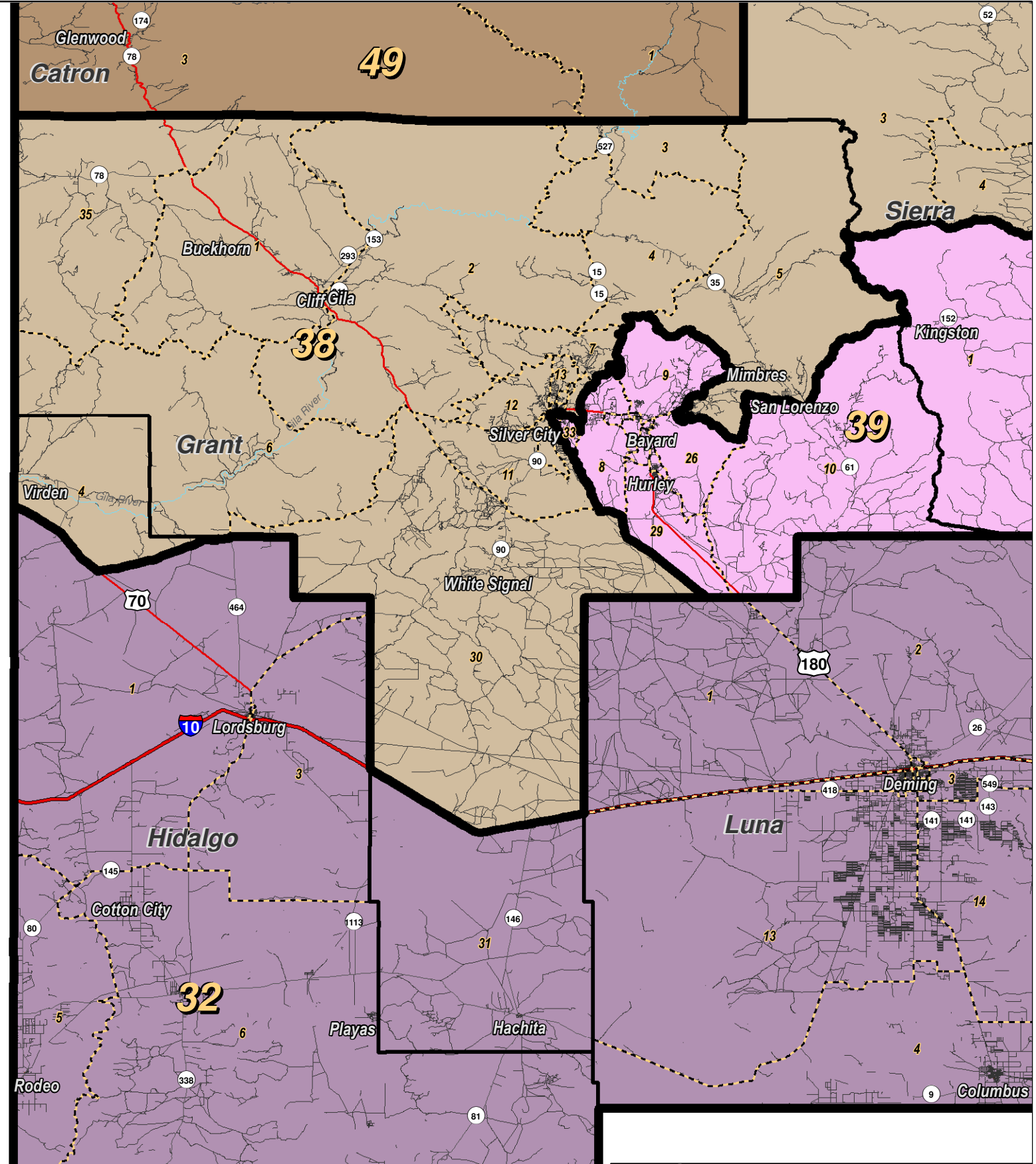
For the New Mexico Legislative Council Service



**LEGEND** Created: March 02, 2012

Precincts	Rivers	Interstate
Counties	Lakes / Ponds	US Highway
		State Highway

Research & Polling, Inc. distributes this map assuming no liability for any errors, omissions, or inaccuracies in the information provided regardless of the cause in reliance upon any maps.



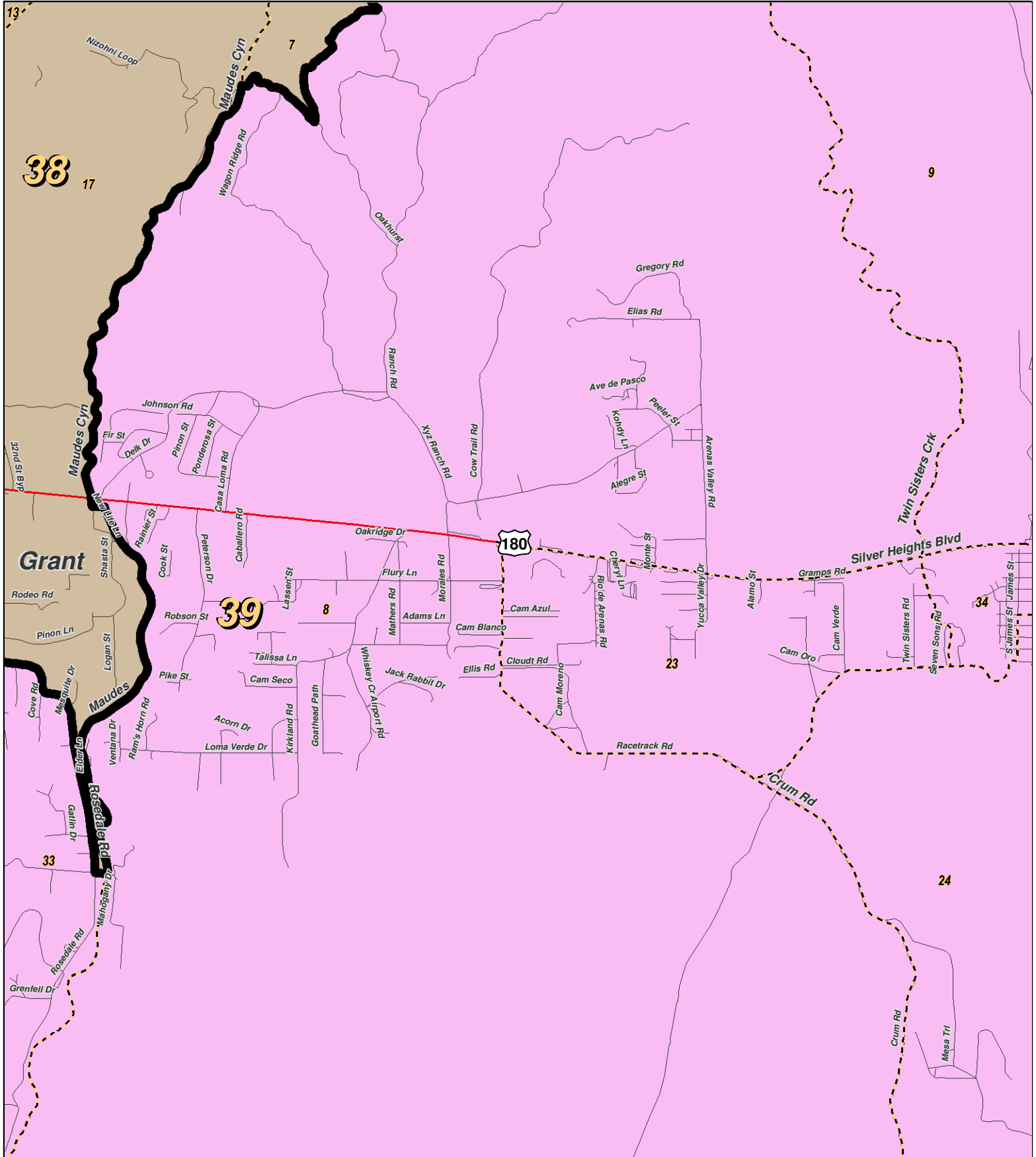
**LEGEND** Created: March 01, 2012

- Precincts
- Rivers
- Interstate
- Counties
- Lakes / Ponds
- US Highway
- State Highway

Research & Polling, Inc. distributes this map assuming no liability for any errors, omissions, or inaccuracies in the information provided regardless of the cause in reliance upon any maps.



For the New Mexico  
 Legislative Council Service

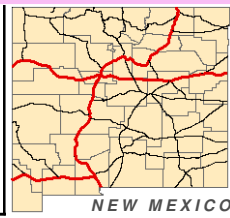


RESEARCH & POLLING INC.

For the New Mexico Legislative Council Service

0 1 Miles

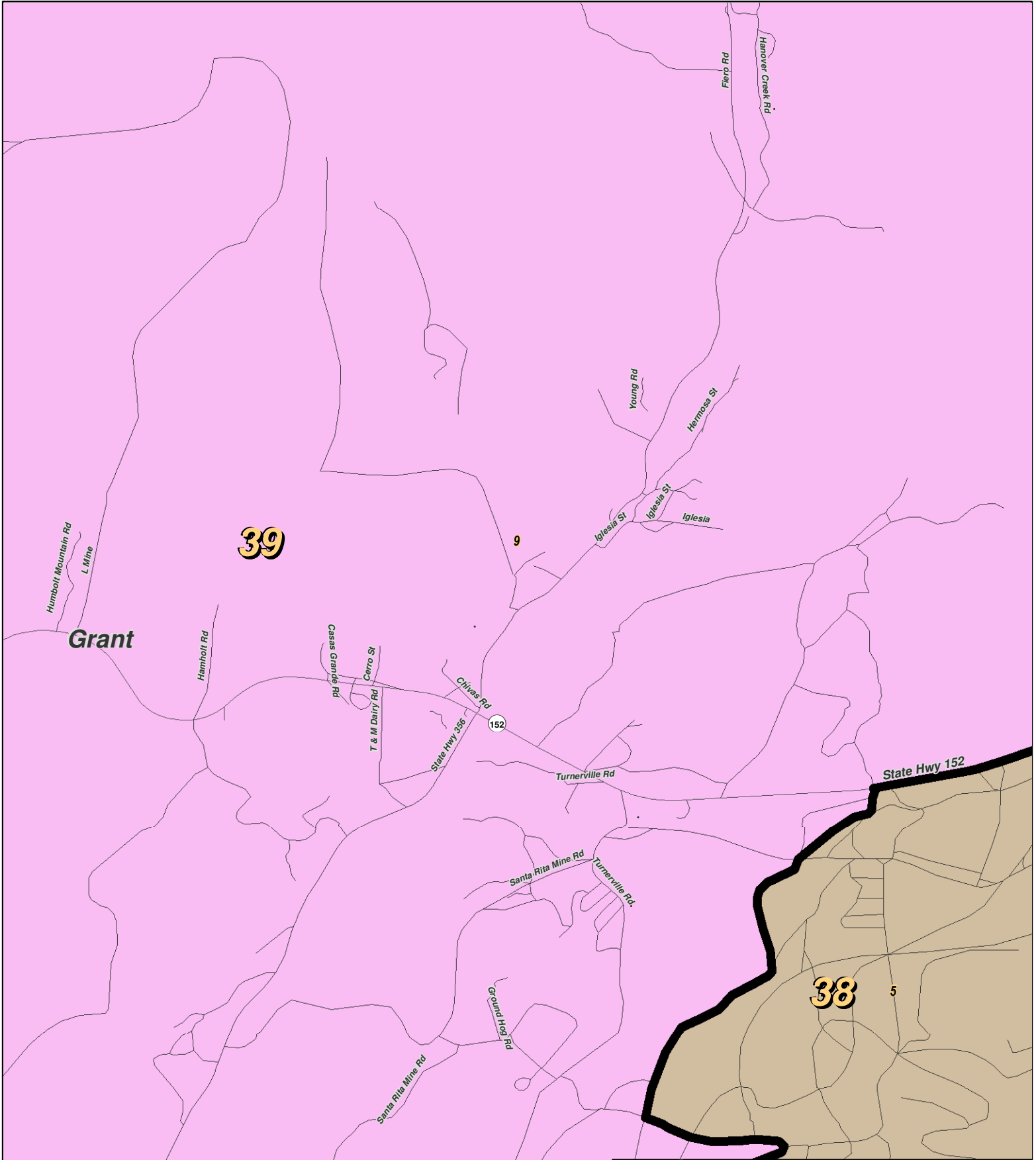
North arrow



**LEGEND** Created: March 01, 2012

Precincts	Rivers	Interstate
Counties	Lakes / Ponds	US Highway
		State Highway

Research & Polling, Inc. distributes this map assuming no liability for any errors, omissions, or inaccuracies in the information provided regardless of the cause in reliance upon any maps.



For the New Mexico  
Legislative Council Service

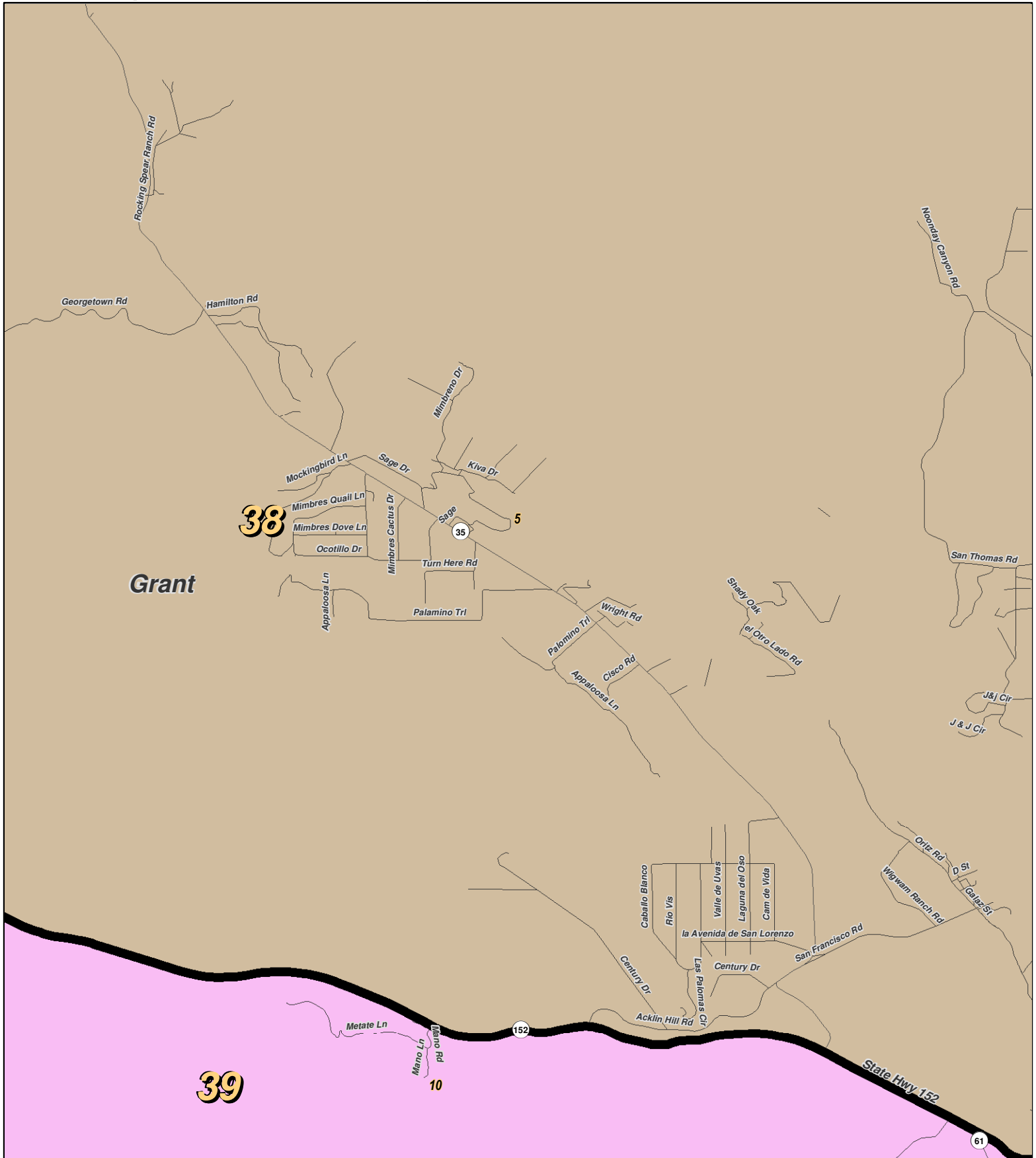


**LEGEND**

Created: March 01, 2012

- Precincts
- Rivers
- Interstate
- Counties
- Lakes / Ponds
- US Highway
- State Highway

Research & Polling, Inc. distributes this map assuming no liability for any errors, omissions, or inaccuracies in the information provided regardless of the cause in reliance upon any maps.



**RESEARCH & POLLING INC.**  
 For the New Mexico Legislative Council Service

0 1 Miles

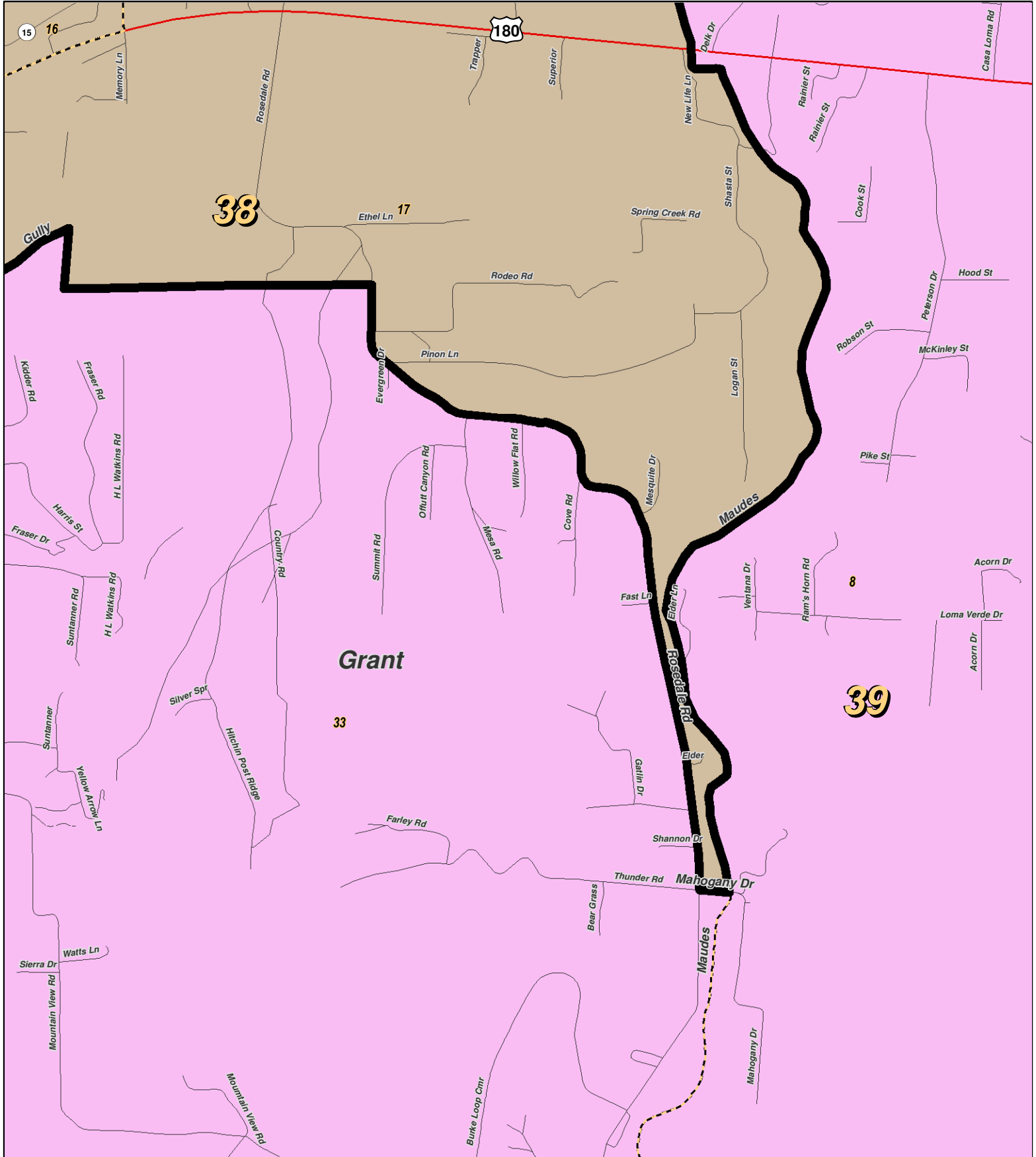
N



**LEGEND** Created: March 01, 2012

- Precincts
- Counties
- Rivers
- Lakes / Ponds
- Interstate
- US Highway
- State Highway

Research & Polling, Inc. distributes this map assuming no liability for any errors, omissions, or inaccuracies in the information provided regardless of the cause in reliance upon any maps.



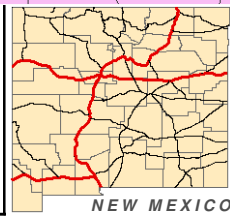
0 0.5 Miles

**RESEARCH & POLLING INC.**

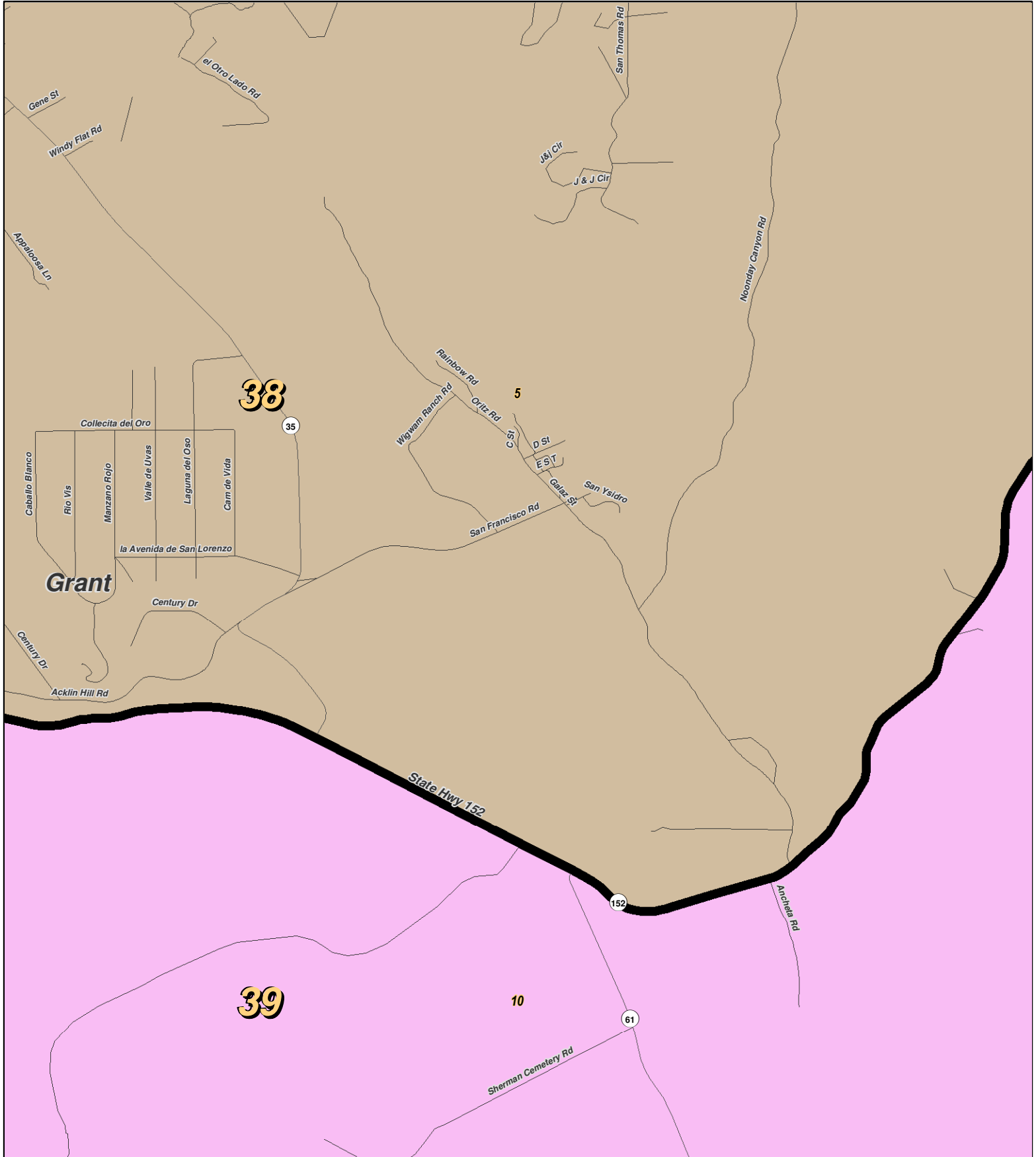
For the New Mexico Legislative Council Service

**LEGEND** Created: March 01, 2012

- Precincts
- Rivers
- Interstate
- Counties
- Lakes / Ponds
- US Highway
- State Highway



Research & Polling, Inc. distributes this map assuming no liability for any errors, omissions, or inaccuracies in the information provided regardless of the cause in reliance upon any maps.



0 0.7 Miles

**RESEARCH & POLLING INC.**

For the New Mexico Legislative Council Service

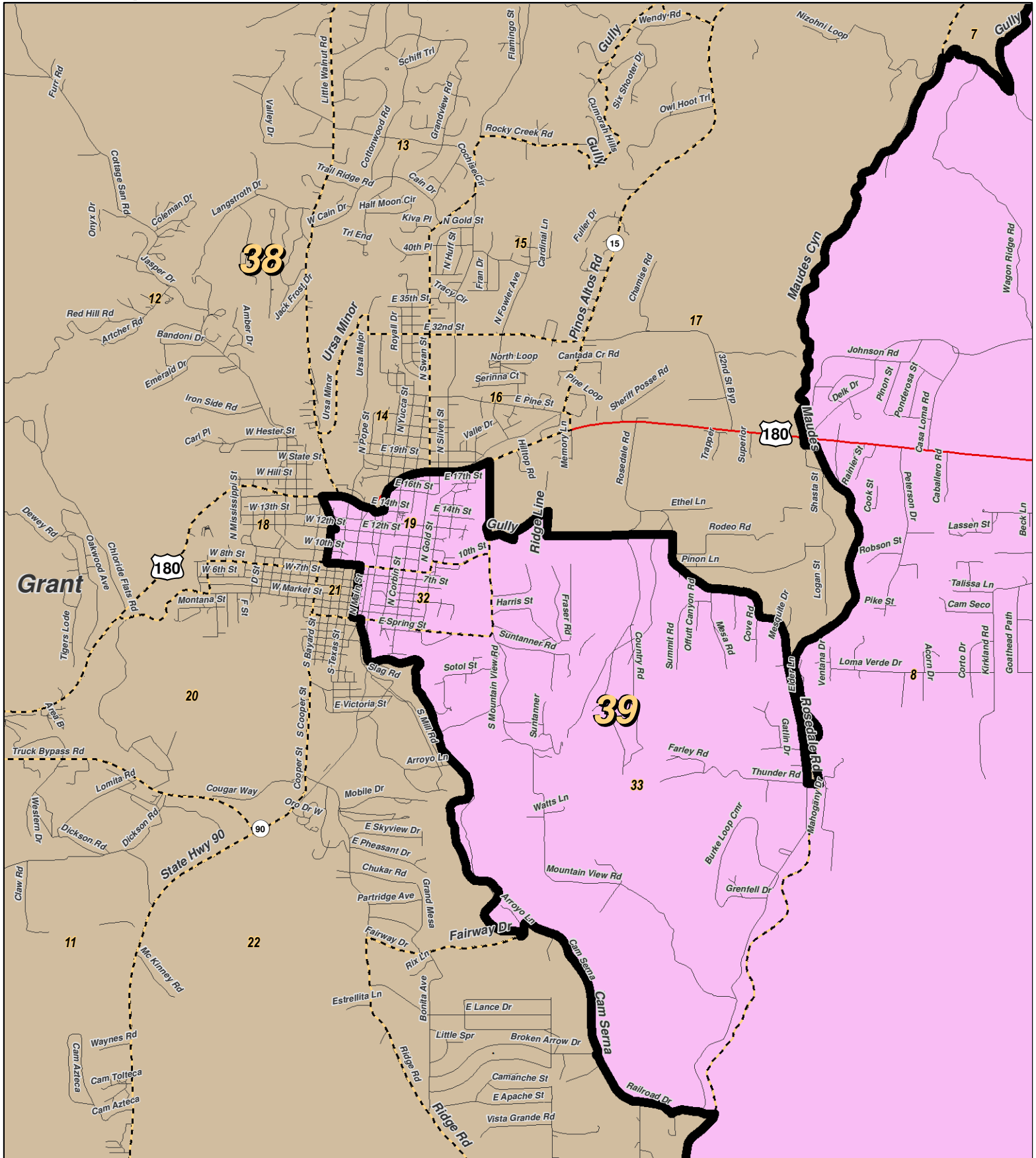
N



**LEGEND** Created: March 01, 2012

Precincts	Rivers	Interstate
Counties	Lakes / Ponds	US Highway
		State Highway

Research & Polling, Inc. distributes this map assuming no liability for any errors, omissions, or inaccuracies in the information provided regardless of the cause in reliance upon any maps.



0 1 Miles

**RESEARCH & POLLING INC.**

For the New Mexico  
Legislative Council Service

NEW MEXICO

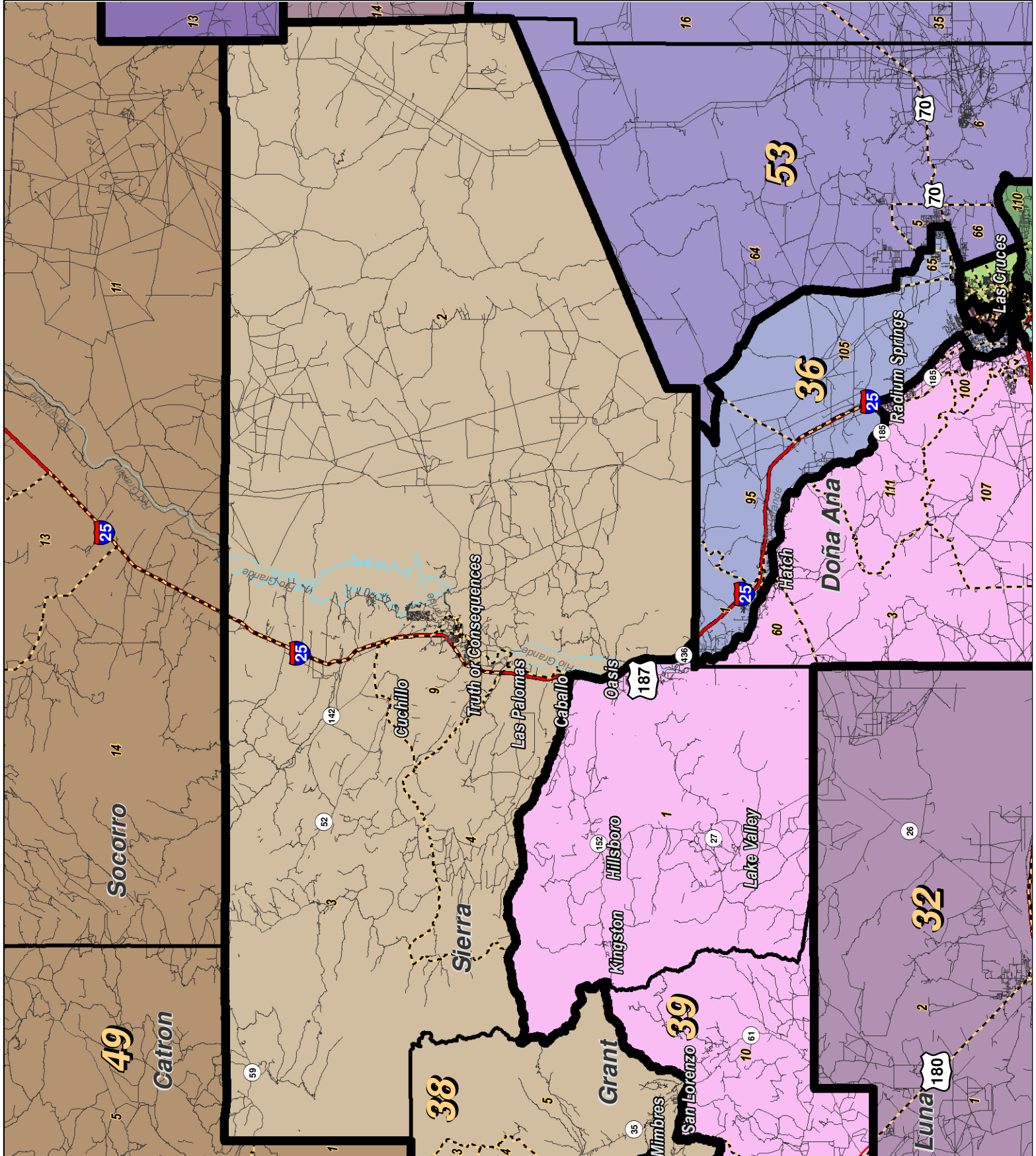


**LEGEND** Created: March 01, 2012

Precincts	Rivers	Interstate
Counties	Lakes / Ponds	US Highway
		State Highway

Research & Polling, Inc. distributes this map assuming no liability for any errors, omissions, or inaccuracies in the information provided regardless of the cause in reliance upon any maps.

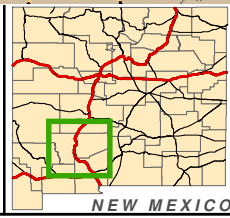




0 5 10 15 20 Miles

**RESEARCH & POLLING INC.**

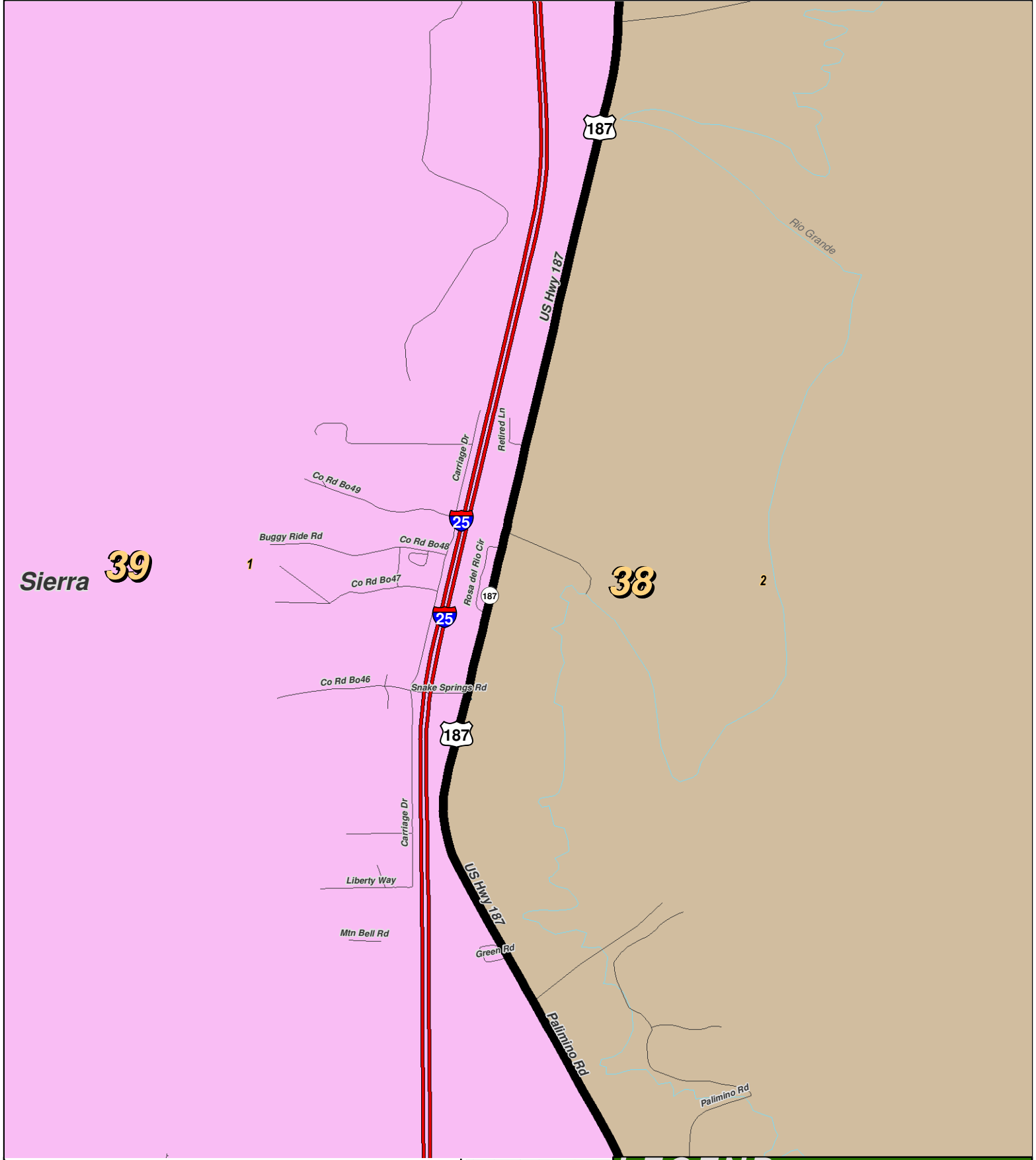
For the New Mexico Legislative Council Service



**LEGEND** Created: March 01, 2012

- Precincts
- Counties
- Rivers
- Lakes / Ponds
- Interstate
- US Highway
- State Highway

Research & Polling, Inc. distributes this map assuming no liability for any errors, omissions, or inaccuracies in the information provided regardless of the cause in reliance upon any maps.



0 0.5 Miles

**RESEARCH & POLLING INC.**

For the New Mexico Legislative Council Service



**LEGEND** Created: March 01, 2012

Precincts	Rivers	Interstate
Counties	Lakes / Ponds	US Highway
		State Highway

Research & Polling, Inc. distributes this map assuming no liability for any errors, omissions, or inaccuracies in the information provided regardless of the cause in reliance upon any maps.

**NM House  
HD\_District\_Court\_1  
(Court Adopted on Remand February 2012)**

**District: 38**

County/ Precinct	Total Population	Adult Hispanic	Total Adult Native American	Adult Non-Hispanic		
				White	Native American	Black
GR 1	661	5.2%	2.4%	92.4%	1.1%	0.2%
GR 2	626	17.8%	2.3%	79.5%	0.6%	0.2%
GR 3	51	2.3%	4.5%	90.9%	2.3%	0.0%
GR 4	146	7.2%	0.7%	91.4%	0.7%	0.0%
GR 5	1,185	23.0%	3.4%	72.7%	1.7%	0.5%
GR 6	37	0.0%	0.0%	100.0%	0.0%	0.0%
GR 7	467	7.3%	1.2%	91.0%	0.5%	0.0%
GR 11	1,860	29.3%	2.7%	67.3%	0.6%	0.9%
GR 12	2,306	26.3%	2.6%	70.4%	0.6%	0.7%
GR 13	1,645	27.4%	1.2%	69.8%	0.3%	1.1%
GR 14	1,317	39.5%	1.6%	57.4%	0.7%	0.5%
GR 15	1,466	54.7%	1.6%	43.0%	0.2%	0.3%
GR 16	1,399	50.9%	1.5%	46.5%	0.8%	0.3%
GR 17	456	28.9%	2.1%	68.8%	0.0%	0.5%
GR 18	822	33.5%	4.3%	56.0%	2.5%	3.8%
GR 20	1,161	42.8%	2.6%	54.2%	0.7%	1.1%
GR 21	180	29.4%	3.1%	64.4%	1.3%	1.9%
GR 22	1,740	59.5%	3.1%	37.3%	0.7%	0.7%
GR 30	653	14.0%	1.3%	84.5%	0.2%	0.6%
GR 35	101	6.6%	0.0%	90.1%	0.0%	1.1%
HI 4	383	18.5%	0.0%	81.1%	0.0%	0.0%
SI 2	2,338	11.1%	2.9%	85.2%	1.0%	0.4%
SI 3	388	20.7%	4.0%	76.8%	0.9%	0.0%
SI 4	374	18.1%	4.7%	78.4%	0.9%	0.0%
SI 5	2,166	22.9%	3.7%	73.4%	1.4%	0.7%
SI 6	479	17.8%	3.2%	77.8%	0.9%	0.5%
SI 7	1,322	19.2%	5.2%	76.3%	2.4%	0.2%
SI 8	1,419	30.8%	3.5%	66.2%	0.6%	0.4%
SI 9	1,940	25.4%	2.9%	71.4%	0.5%	0.3%
<b>District Totals</b>	<b>29,088</b>	<b>28.2%</b>	<b>2.7%</b>	<b>68.4%</b>	<b>0.9%</b>	<b>0.6%</b>