



**New Mexico State Land Office
Stephanie Garcia Richard
Commissioner of Public Lands**

**Sunalei Stewart
Deputy Commissioner**

**RADIOACTIVE AND HAZARDOUS
MATERIALS COMMITTEE**

JUNE 9, 2026

Agenda



NMSLO Legal and Regulatory Framework



Uranium Mining



Remediation and Reclamation Efforts



Questions

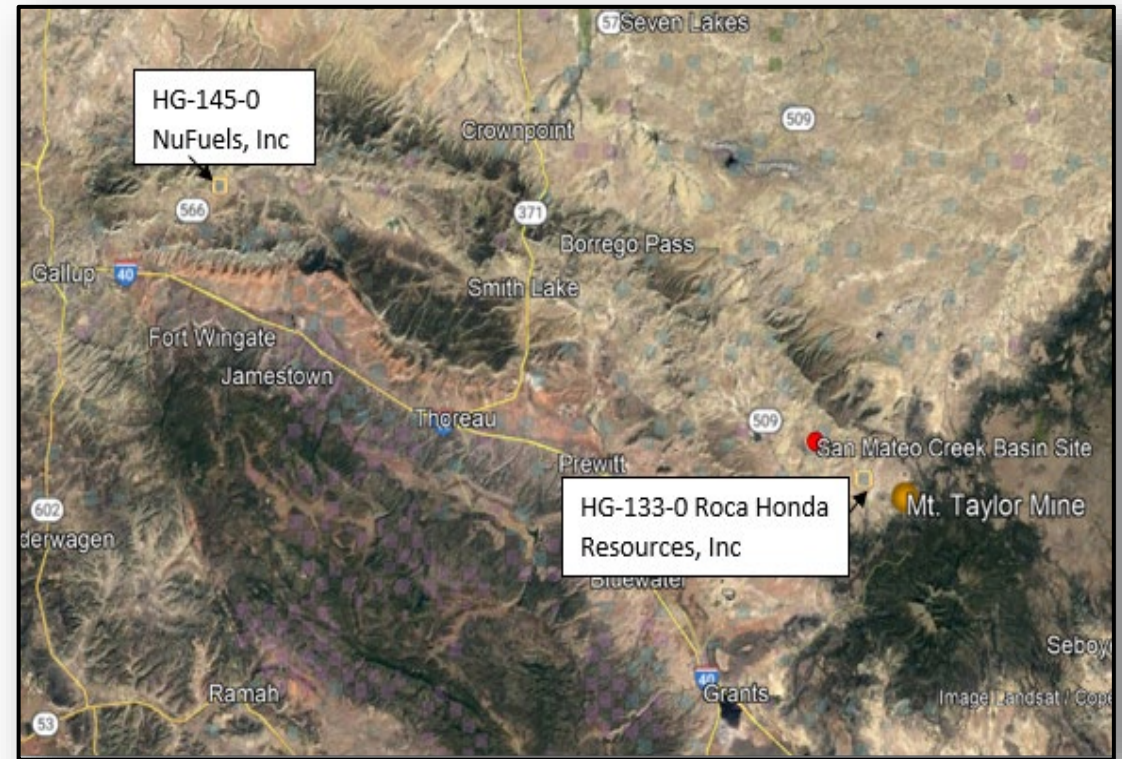
State Land Office Legal Framework

- Broad authority over the management and disposition of state trust lands (nine million acres of surface, 13 million acres of mineral rights)
- Leases (ag, commercial, oil & gas, renewable, mining, etc.) provide terms and conditions entities must follow regarding operations and site clean-up requirements in addition to agency rules
- Require compliance with other state and federal laws/regs (e.g., EMNRD, NMED, PRC, EPA)
- Enforcement tools – achieve compliance via collaboration or litigation



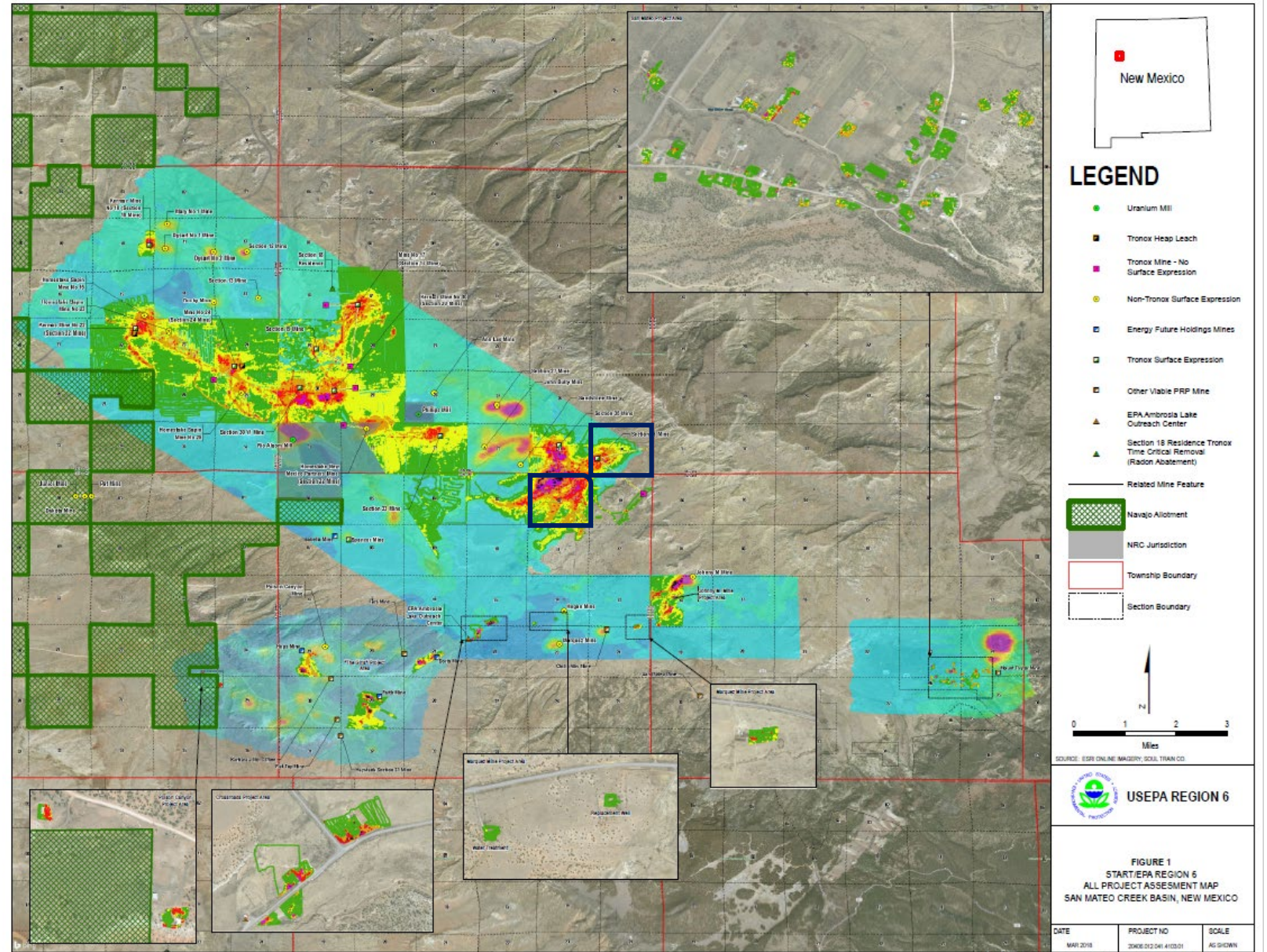
Uranium Activity on State Trust Lands

- Two active, legacy uranium leases (neither producing)
 - NuFuels, Inc. (signed 2018; expires 2033)
 - Roco Hondo Resources, LLC (signed 2015; expires 2030)
- Major legacy contamination (San Mateo Creek Basin)
- No new uranium leasing on trust lands



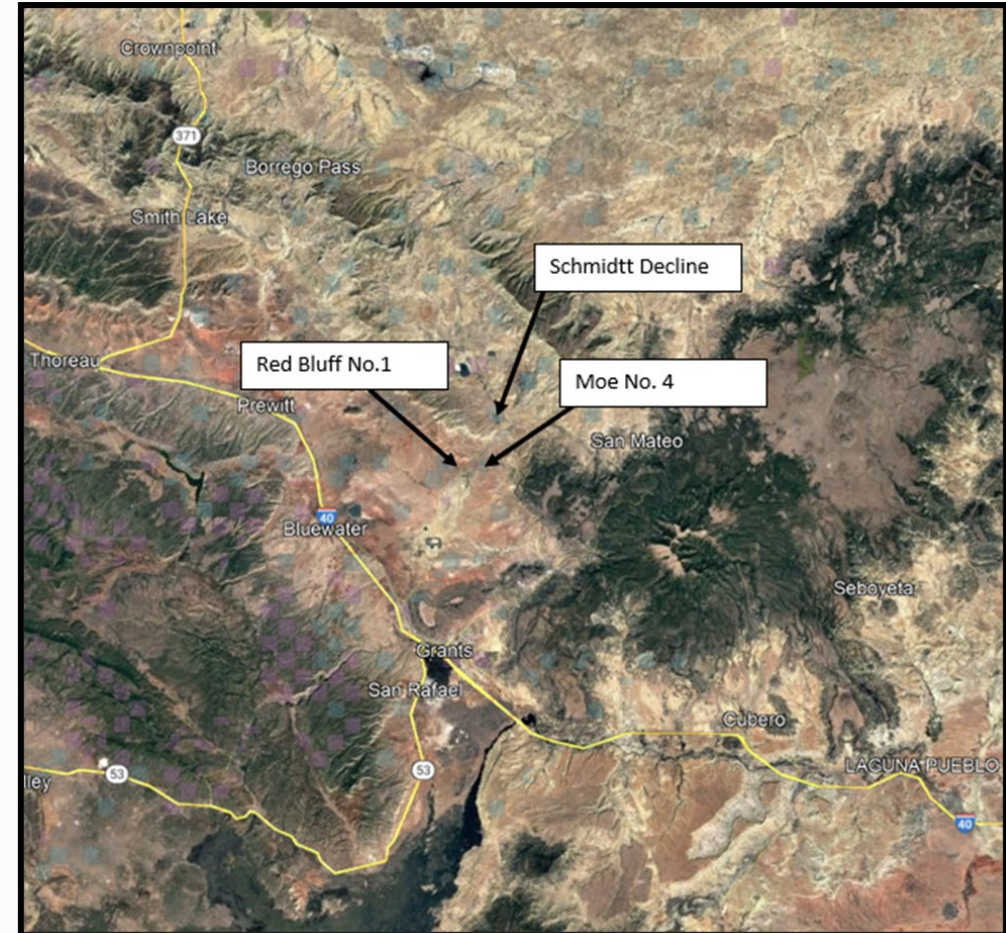
San Mateo Creek Basin EPA Project Map Surface Uranium Contamination

NMSLO Sections 2 & 36



Uranium Mine Cleanup Initiative

- Cross-agency collaboration (NMED, EMNRD) to address legacy contamination across the state (~270 former uranium mine and mil sites)
- Targets abandoned mine sites with no viable responsible party that do not fall under existing cleanup programs (~50)
- First three sites involve state trust land
- Develop clarity on resolving complex issues, such as where to put the radioactive waste (e.g., onsite entombing, offsite disposal facility or send to mill)



Initial Uranium Reclamation Sites

Schmidt Decline: Large underground mine entrance decline, waste rock piles and mining equipment. One acre located ~ 4.5 mile south of Ambrosia Lakes on state, BLM and private lands (underground workings unknown). Cleanup involves placing contaminated rock in the decline, capping the entrance and fencing and signage. Completed this FY.

Red Bluff No. 1: ~ 3 acres on state/private lands. Cleanup of site involves removing 2500 tons of surface waste rock and transporting the waste to the Clean Harbors Deer Trail disposal facility. Reclamation activities will be completed this FY. Restoration of the site will commence next FY.

Moe No. 4: ~ 3 acres located about 25 miles east of San Mateo Creek (underground workings is unknown). Radiological surveys underway. Majority of the work will occur in the next fiscal year. More complicated environmental features and more contamination present. Headframe, collapsed decline/shaft, at least 3 waste rock piles and a reddish silty settling pond-like area of high radiation readings; may include adjacent private property.

Schmidt Decline Cleanup



Reclamation Ribbon-cutting Ceremony

★ ADMIT ONE ★

SAVE THE DATE



**NEW MEXICO
MINING MUSEUM**
100 IRON AVENUE
GRANTS, NM 87020



**THURSDAY
JUNE 18, 2026**
11:00AM - 1:00PM

THE "MOMENT"

A formal ribbon-cutting ceremony celebrating a new chapter of on-the-ground reclamation as part of the New Mexico Uranium Mine Cleanup Initiative actively addressing legacy uranium contamination across New Mexico.



SCAN TO LEARN
MORE ABOUT THE
URANIUM MINE
CLEANUP INITIATIVE

<https://qrco.de/NMAUMCleanup>

Remediation and Reclamation Efforts



Created New Environmental Compliance Office

- Added three environmental specialists in 2023
- Stepped-up remediation & reclamation expertise & activities



Enforcement and Accountability Program

- Over 870 oil & gas wells plugged (at industry's expense)
- At least \$80 million in remediation costs NOT shouldered by taxpayers
- Approximately 40 lawsuits filed



Bonding

- Ensure leases are adequately bonded
- Protect taxpayers and land trust beneficiaries

The Big Picture, Challenge



On the Ground Example

Sanmal Queen Unit: Smith & Marris / MMCP Leasing Lawsuit (\$7.5 million Damage Judgment)



QUESTIONS?



 @nmlandoffice  @nm.land.office  @nmlandoffice
 nmstatelands.org