

Connecting Communities: Fire Adapted Communities & Restoration Economy

Dr. Zander Evans
Executive Director
Forest Stewards Guild
zander@forestguild.org

Forest Stewards
 **Guild**



The Greater Santa Fe Fireshed Coalition

A “fireshed” is an area where if a fire burns it will impact not only the burned areas but the downstream ecosystems and communities too.

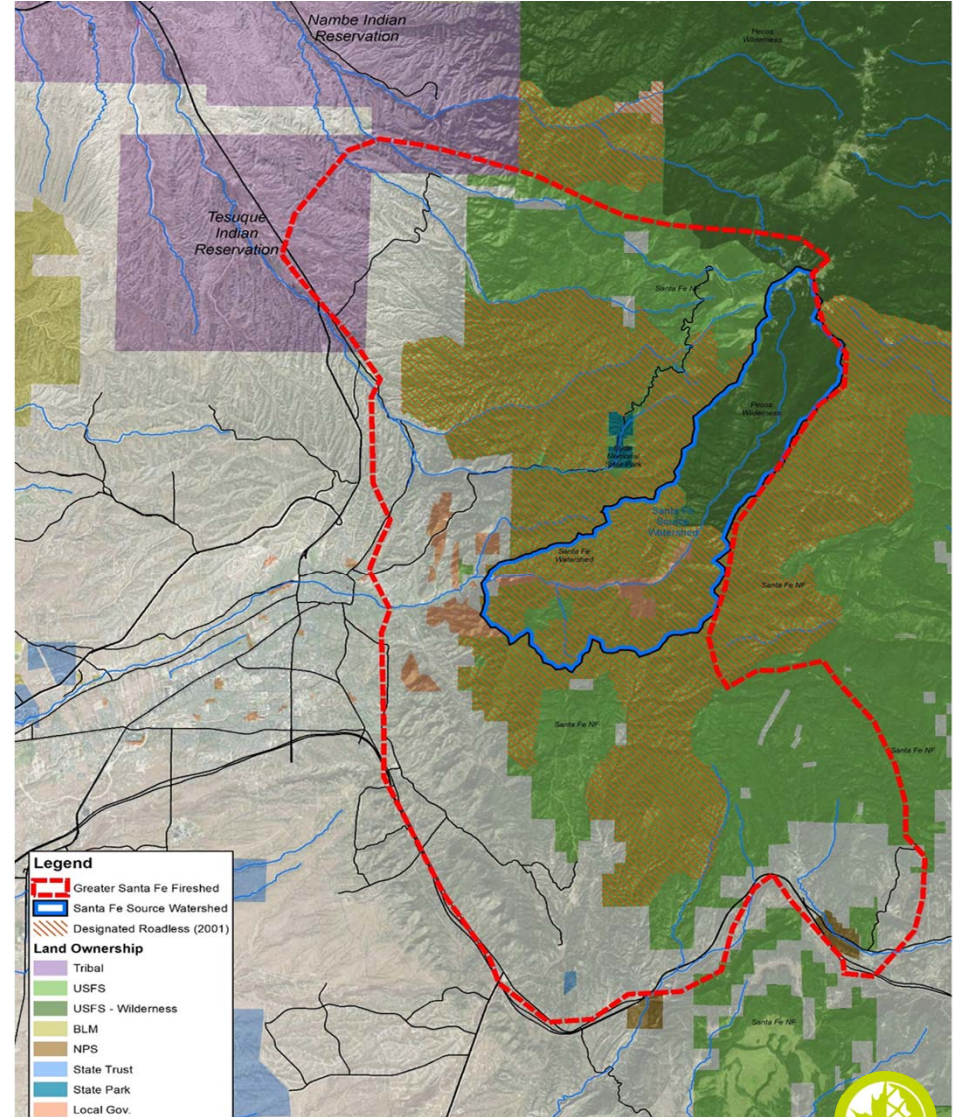
The Coalition is a group of partners working toward common goals that grew out of the decades of work done by many of these members to protect the municipal watershed.

Recipient of a \$1.3 million Community Wildfire Defense Grant

Partners

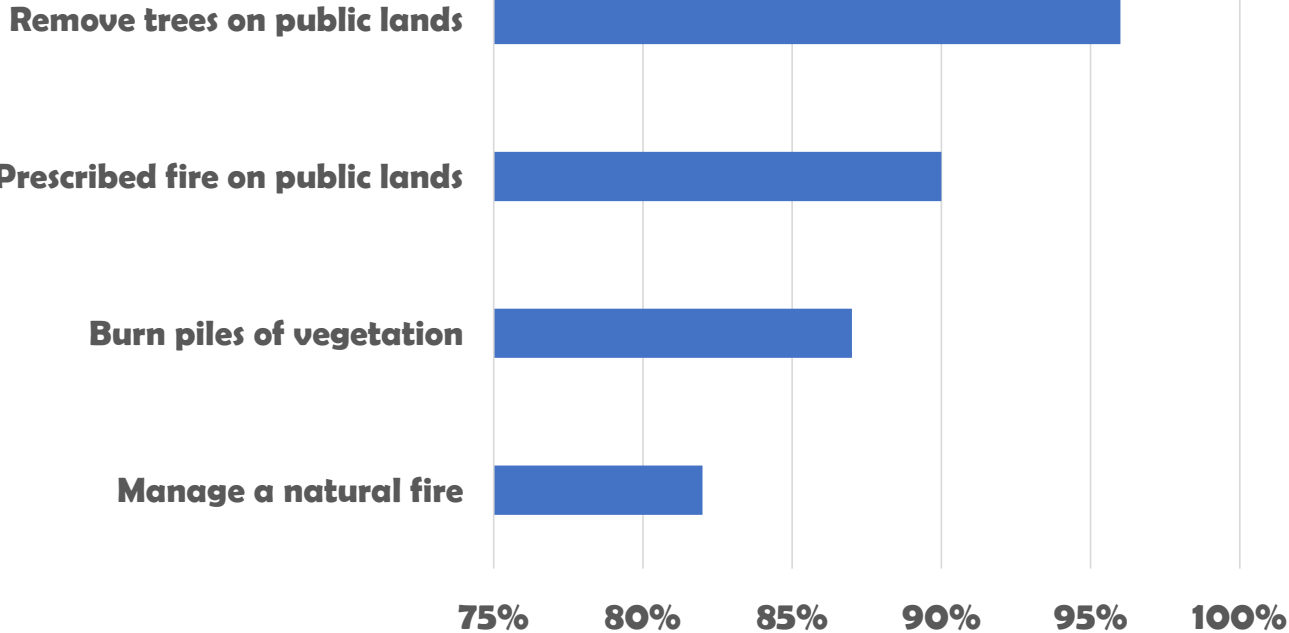
New Mexico State Forestry
Pueblo of Tesuque
Santa Fe Watershed Association
City of Santa Fe Fire Department
City of Santa Fe Water Division
Region 3 of the USDA Forest Service
SFNF: Espanola and Pecos Ranger Districts
Santa Fe County
Santa Fe Fat Tire Society
The Nature Conservancy

Forest Stewards Guild
Wildfire Network
Pojoaque Soil and Water Cons. District
Natural Resource Conservation Service
New Mexico Forest Industry Association
USGS Jemez Mountain Field Station
New Mexico Forest and Watershed Restoration Institute
AND MORE!!!!!!!



Survey with over 400 Santa Fe respondents

At least moderately acceptable on nearby public lands



The Greater Santa Fe Fireshed Coalition

<https://santafe-wire.hub.arcgis.com/>



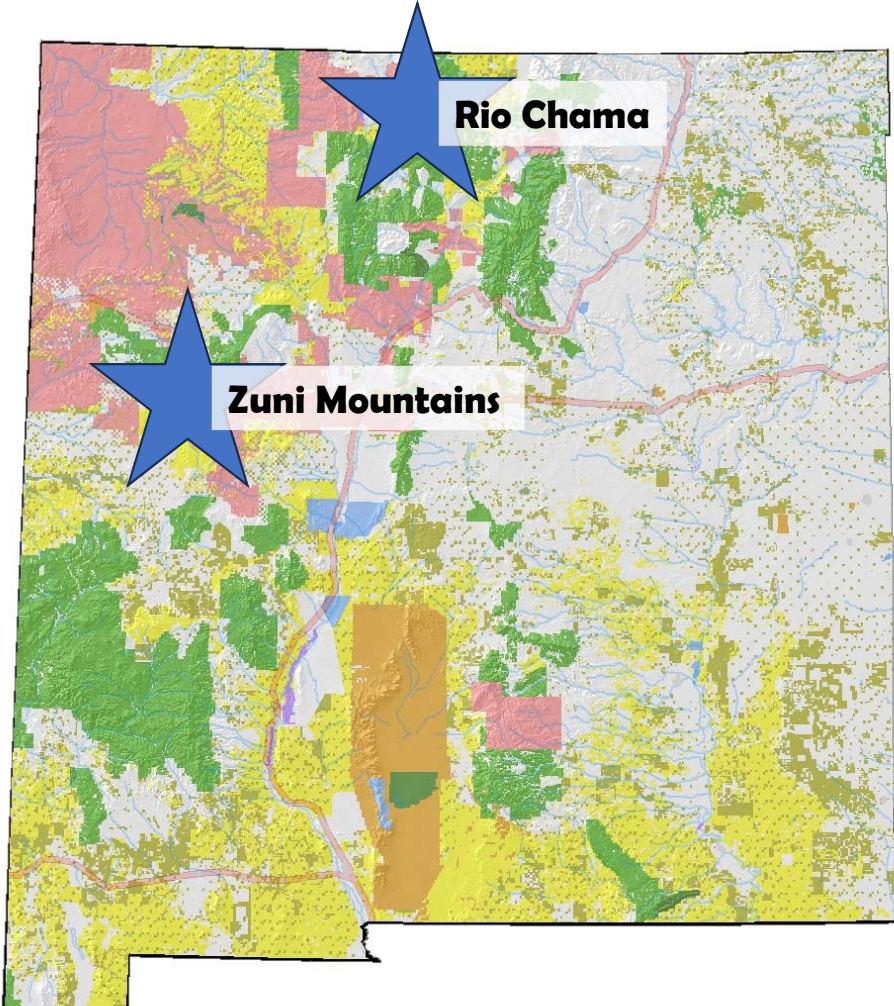


The Fire Adapted New Mexico Learning Network (FAC NM) is about fostering fire adapted communities – communities that acknowledge and take responsibility for their wildfire risk, and take actions to protect residents, homes, neighborhoods, businesses, infrastructure, forests, and open spaces.

www.facnm.org

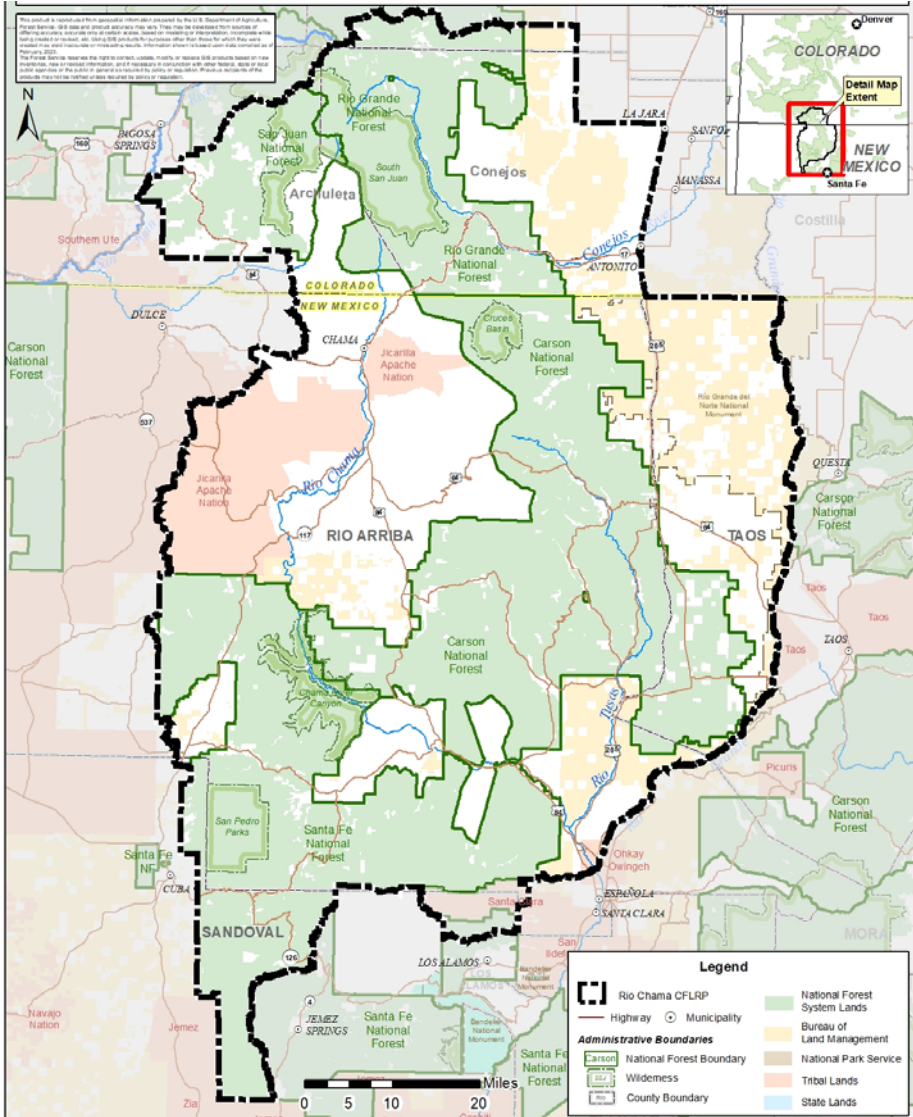


Collaborative Forestry: Restoration & Resilience



Rio Chama Collaborative Restoration

- **3.8 million acres in northern New Mexico and southern Colorado**
- **2.1 million acres are managed by the US Forest Service**
 - **2 USFS regions,**
 - **4 forests, and**
 - **9 ranger districts**
- **1.7 million acres are other public, Tribal, land grant, state, and private lands**



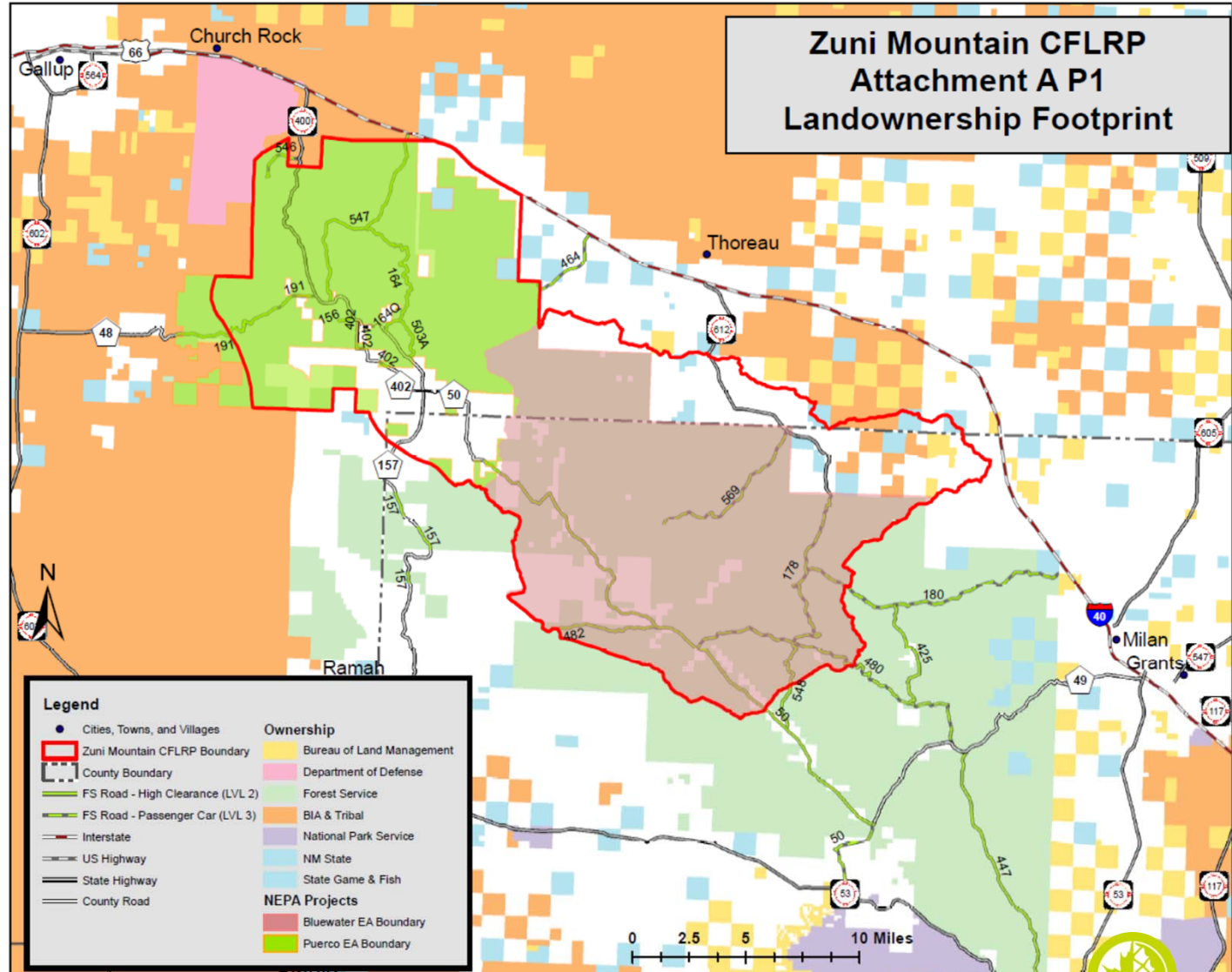
Zuni Mountains Collaborative Restoration

Zuni Mountain CFLRP Attachment A P1 Landownership Footprint

Goal: a restored landscape where vegetation is resilient in the face of climate change, resistant to uncharacteristic crown fires, and supports healthy animal and human communities.

More than 35,000 acres of treatment provides a long-term supply of wood for existing businesses.

Stabilized forest-based economic development has yielded 93 durable, good paying jobs per year that contribute \$2.3 million in salary



Restoration economy

Building career pathways & a stewardship workforce

Forest Stewards Youth Corps

- Seasonal crews for rural and indigenous communities
- Fire training and certificates
- Over 700 youth employed
- 200 hours of college credit
- 300,000 hours of conservation service and education
- Careers in natural resource launched

