

# TRANSITION IN NEW MEXICO





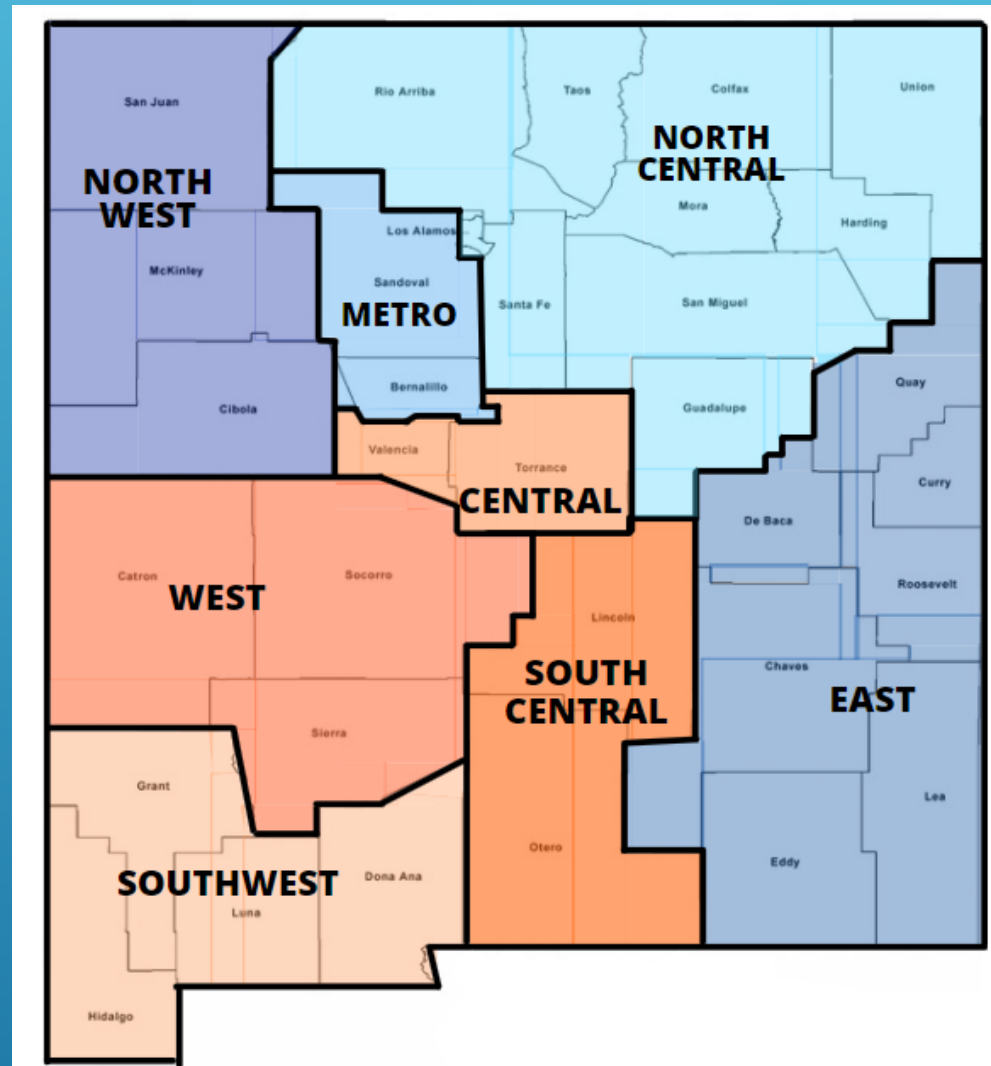
# WHAT ARE PRE-EMPLOYMENT TRANSITION SERVICES?

- Represents the earliest set of services available for students with disabilities who are eligible or potentially eligible for vocational rehabilitation (VR) services.
- Short-term in nature.
- Designed to help students identify career interests, which may be further explored through additional VR services, such as transition services and other individualized VR services.



**Guidance to Employment**  
**Guidance to Post Secondary**  
**Self Advocacy**  
**Work Skills**  
**Work Experience**

# SCHOOL-TO-WORK TRANSITION TEAMS



Through funding from NMDVR, Partners for Employment has created **eight School-to-Work Transition Teams** throughout the state.



The goal of the SWT Teams is to **facilitate collaboration at a local level** and **provide training opportunities** for interagency teams providing transition services to students with intellectual and developmental disabilities.



# PROJECT SEARCH

*A one year, school-to-work program for young people (ages 18-22) with intellectual and developmental disabilities.*

- Goal of competitive employment
- Total workplace immersion
- Internship rotations for career exploration and job skills acquisition
- Life skill development
- Customized job search assistance





# The Project SEARCH Story



**1996**



**TODAY**





# PROJECT SEARCH IN NEW MEXICO

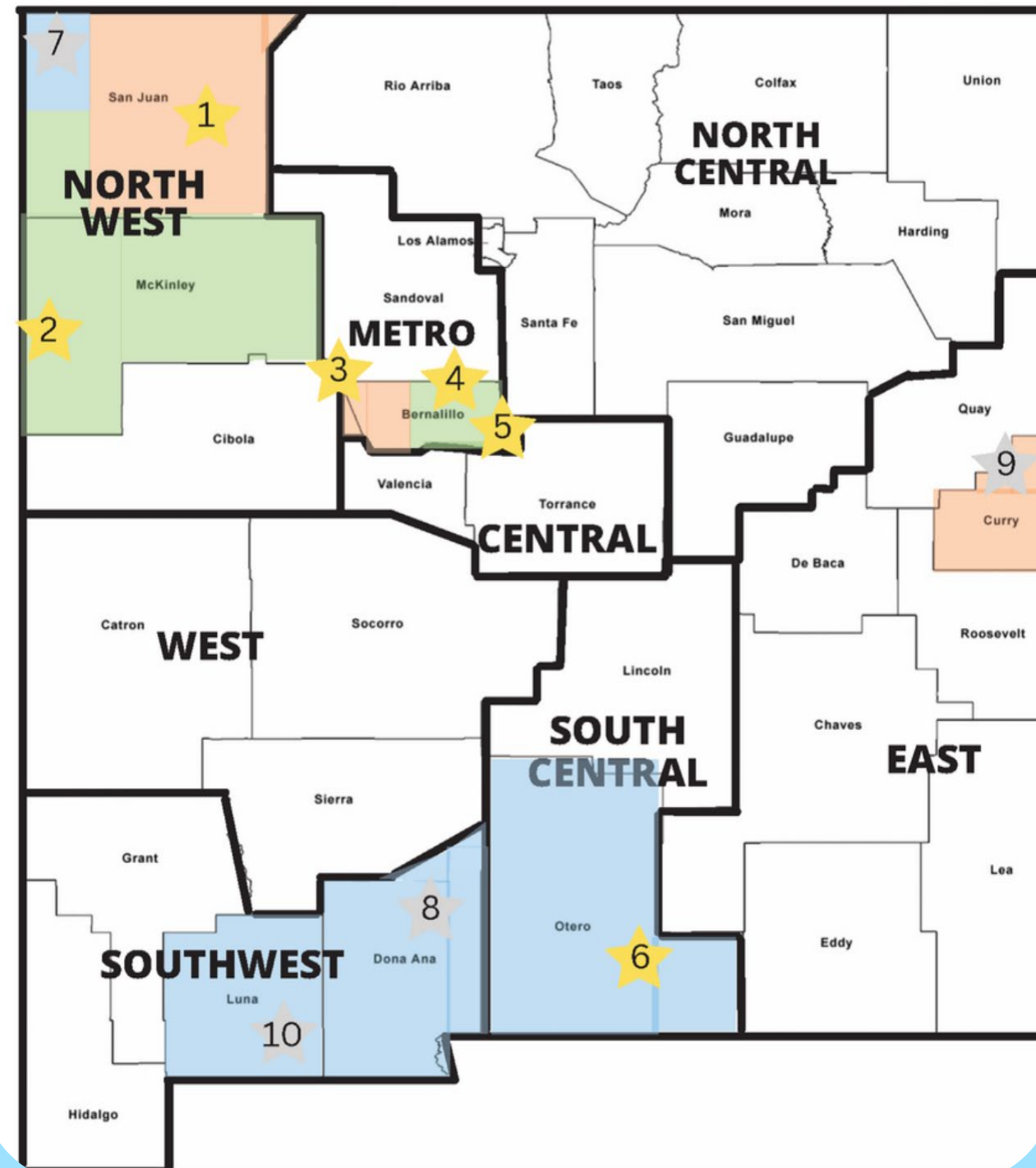


CENTER FOR  
DEVELOPMENT  
& DISABILITY



Project | SEARCH®

## 2022-2023 NM PROJECT SEARCH SITES



# THE PROJECT

## SEARCH MODEL

- Interns complete three separate 10-week internships at a local business and are taught an employability & life skills curriculum.
- Interns are supported by business staff and onsite staff in completing job tasks.
- NMDVR pays interns a working stipend.
- A provider agency assists interns with securing competitive, integrated employment upon graduation.



# PROGRAM GOALS:

---

**Growth In  
Work Skills**

**Systems  
Change**

**Interagency  
Collaboration**

**Connection  
To Follow-Along  
Support**

**Integrated, Competitive  
Employment at or Above  
Minimum Wage**





# WHO CAN BE AN INTERN ?

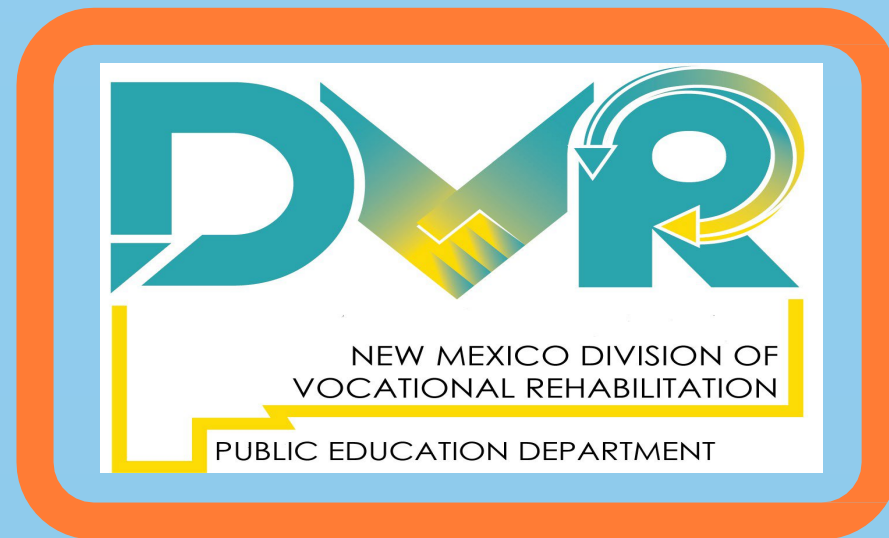


- **Between the ages of 18-21**
- **Completed high school on modified or abilities pathway**
- **Have a documented disability**
- **Would qualify for NMDVR services**
- **Can take direction**

Have a desire to work.



# THE SUPPORT SERVICES TEAM



## NM DIVISION OF VOCATIONAL REHABILITATION & TRIBAL VR

### Program Funder

Provide individual career guidance, job coaching and supports for each intern to gain employment.



## NM DEVELOPMENTAL DISABILITIES SUPPORTS DIVISION

Provides funding for long-term retention and support for eligible interns once they secure a job.



## UNM CDD: PARTNERS FOR EMPLOYMENT

Facilitates steering committee meetings during the planning year and first program year.

Coordinates and supports partners through the launch of the PS program process.





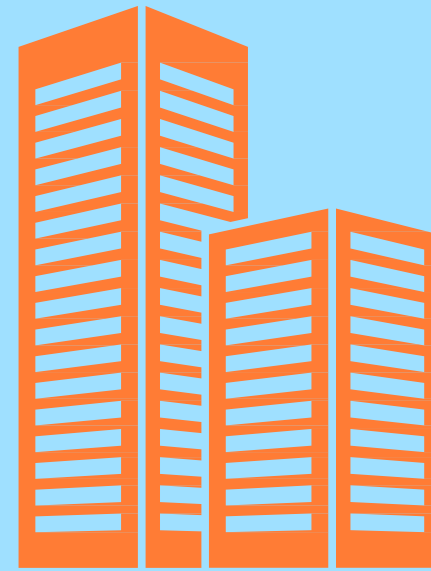
# THE ONSITE TEAM



## School District

Provides:

- \*a full-time dedicated teacher
- \*skills trainer
- \*interns



## Host Business

Provides:

- \*a business liaison
- \*minimum of 10 diverse internship rotations
- \*dedicated classroom space



## Provider Agency

Provides :

- \*a job developer
- \*support with job coaching and job development (long-term)

# A DAY IN THE LIFE OF A PROJECT SEARCH INTERN:



8:00am Employability/Independent Living Skills  
9:00am Internship site  
11:30am Lunch  
12:15pm Internship site  
2:00pm Review, Plan, Journaling  
2:30pm Depart



***\*Many programs differ in schedule according to host business's workplace culture and peak hours of productivity***





# ANNUAL PROJECT SEARCH CALENDAR

**August**

**June**

**1st Rotation: 10 Weeks**

**2nd Internship: 10 Weeks**

**3rd Internship: 10 Weeks**

**PS Program  
Begins**

**Three-Week  
Orientation**

**Transition  
Week**

**Transition  
Week**

**Graduate &  
Begin Work at  
Host Site or in  
Community**

**All Resources Are Available  
Online In Project SEARCH  
Member Toolkit**





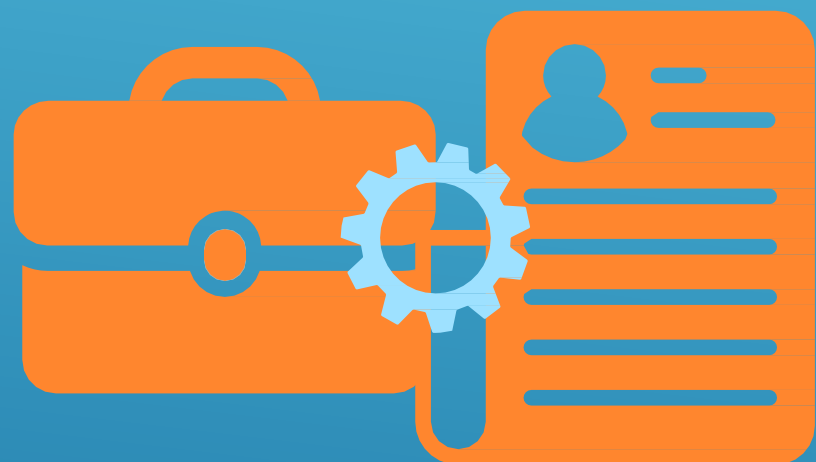
# Benefits of Participating in Project SEARCH





# FOR STUDENT INTERNS:

ACQUIRE COMPETITIVE,  
TRANSFERABLE, AND MARKETABLE  
JOB SKILLS



OBTAIN WORK BASED INDIVIDUALIZED  
COACHING, INSTRUCTION, AND FEEDBACK



GAIN INCREASED INDEPENDENCE,  
CONFIDENCE, AND SELF ESTEEM



DEVELOP CONNECTIONS TO  
VOCATIONAL REHABILITATION AND  
OTHER ADULT SERVICE AGENCIES



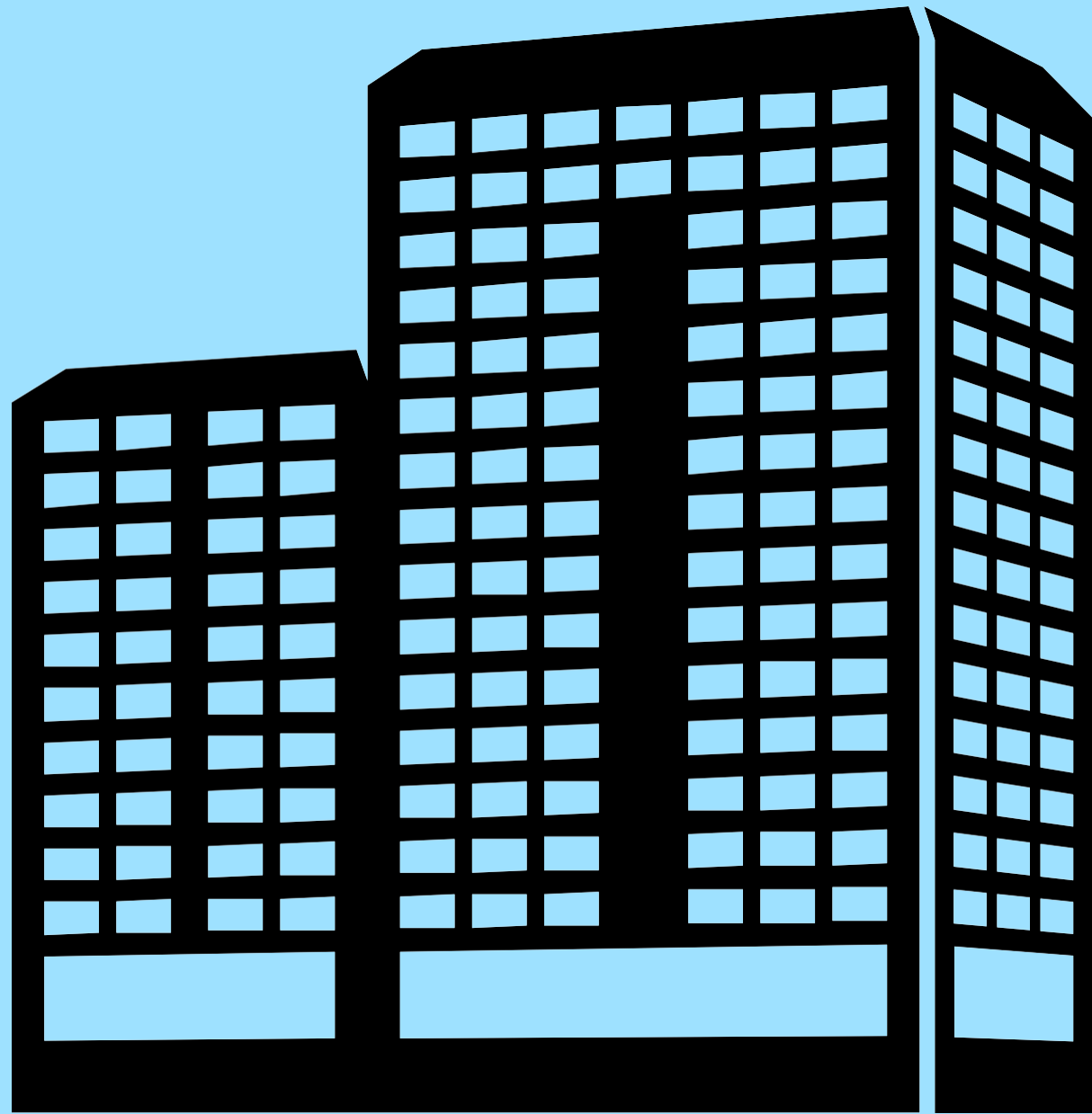
SUPPORT IN GAINING  
COMPETITIVE, INTEGRATED  
EMPLOYMENT



STIPEND PAYMENTS FOR INTERNS



# FOR THE HOST BUSINESS:



**Gain interns/employees with disabilities who serve as a role model for customers/patients, visitors, and staff.**

---



**Access to continuous diversity and inclusion training for staff.**

---



**Performance and retention, in some high-turnover environments, entry-level positions increase dramatically.**

---



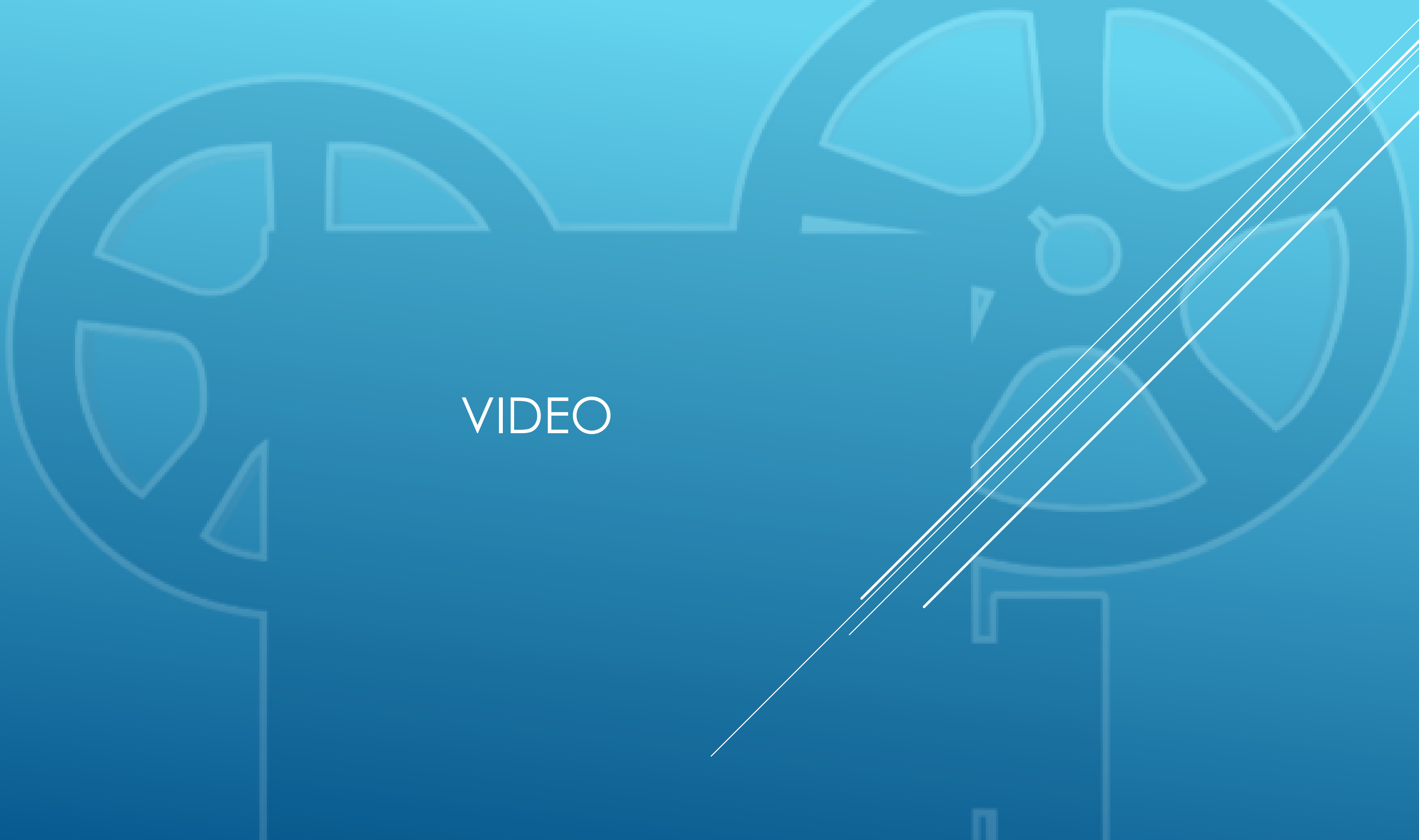
**Access to a new, diverse, talent stream with skills that match labor needs.**







VIDEO







# QUESTIONS?





For More Information

Charlene B. Chavez

[Charlene.Chavez@DVR.NM.GOV](mailto:Charlene.Chavez@DVR.NM.GOV)

(505) 539-6255