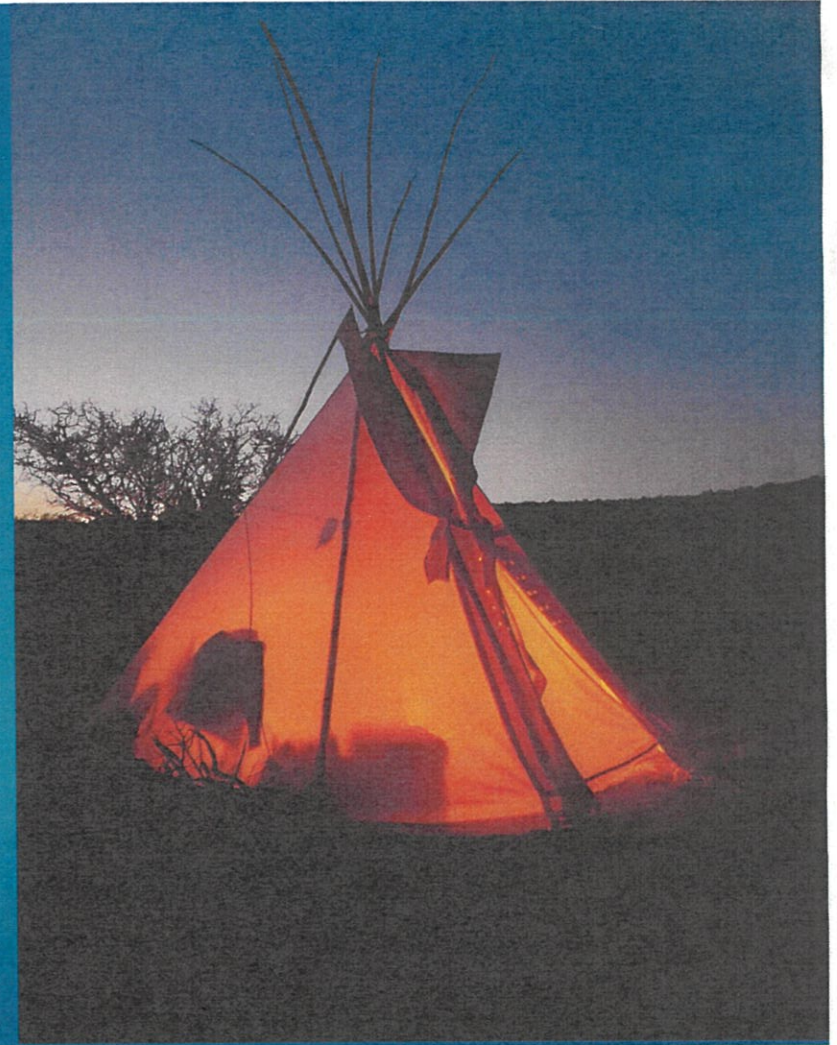


Current & Proposed Watershed Projects



Trash Rack construction In Bear Canyon

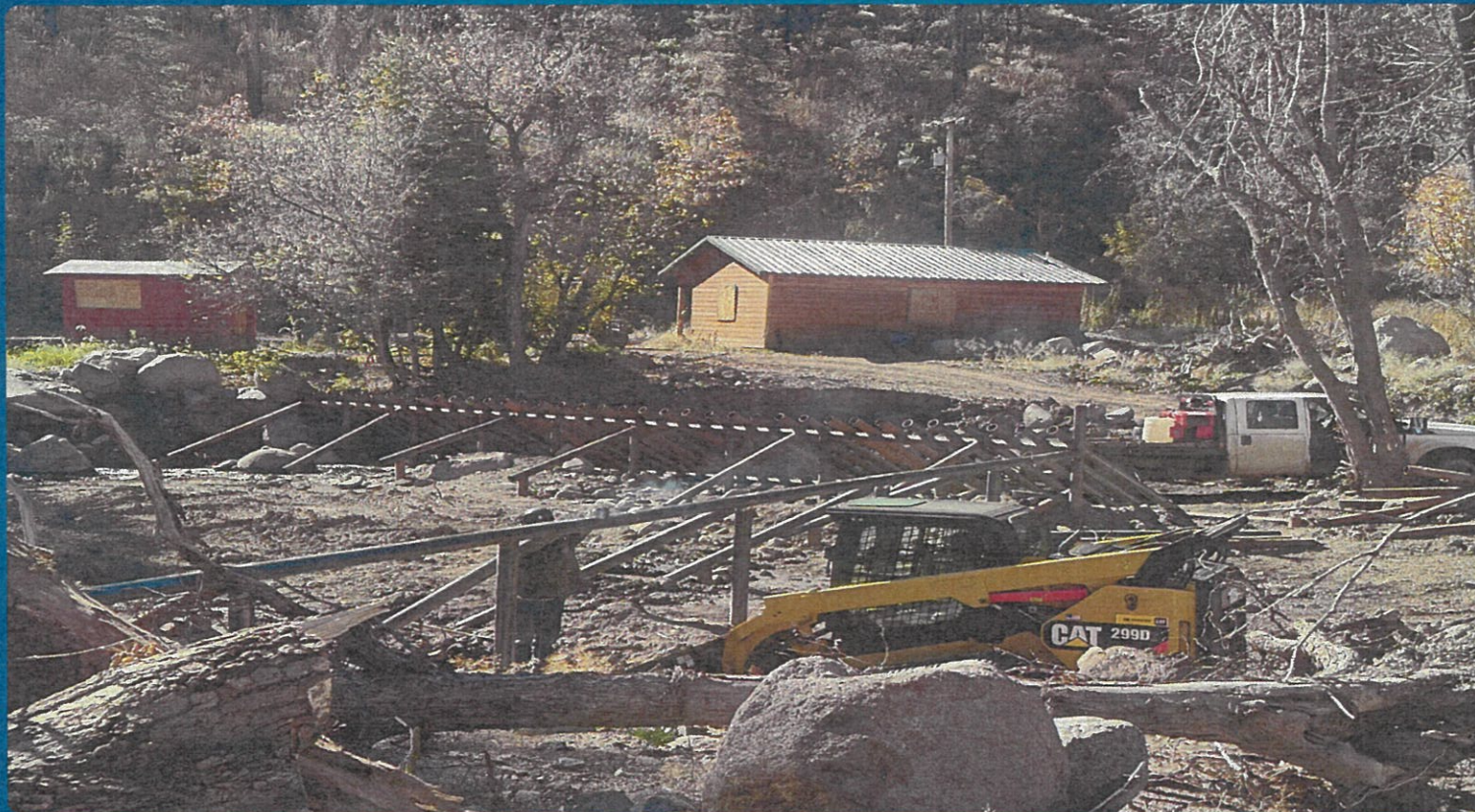




Bear canyon trash
rack holding back
large amounts of
debris



Steel trash rack construction Mescalero cabins



Mescalero Cabins trash rack construction



Mescalero Cabins trash rack holding back debris



Steel trash rack, Eagle creek under construction





Eagle creek trash
rack 90%
complete





Eagle creek trash
rack 100% complete
and holding back
sediment





Dredging of Bottom Eagle Lake



Long reach
excavator
dredging bottom
Eagle Lake

Spill way at the
bottom Eagle Lake
before construction



Bottom Eagle Lake
Spill Way before
construction.





Bottom Eagle lake Spillway after construction



Wet Land between upper and lower Eagle Lakes



New 2026 proposed NRCs EWP projects



Mescalero Cabins South/North Fork

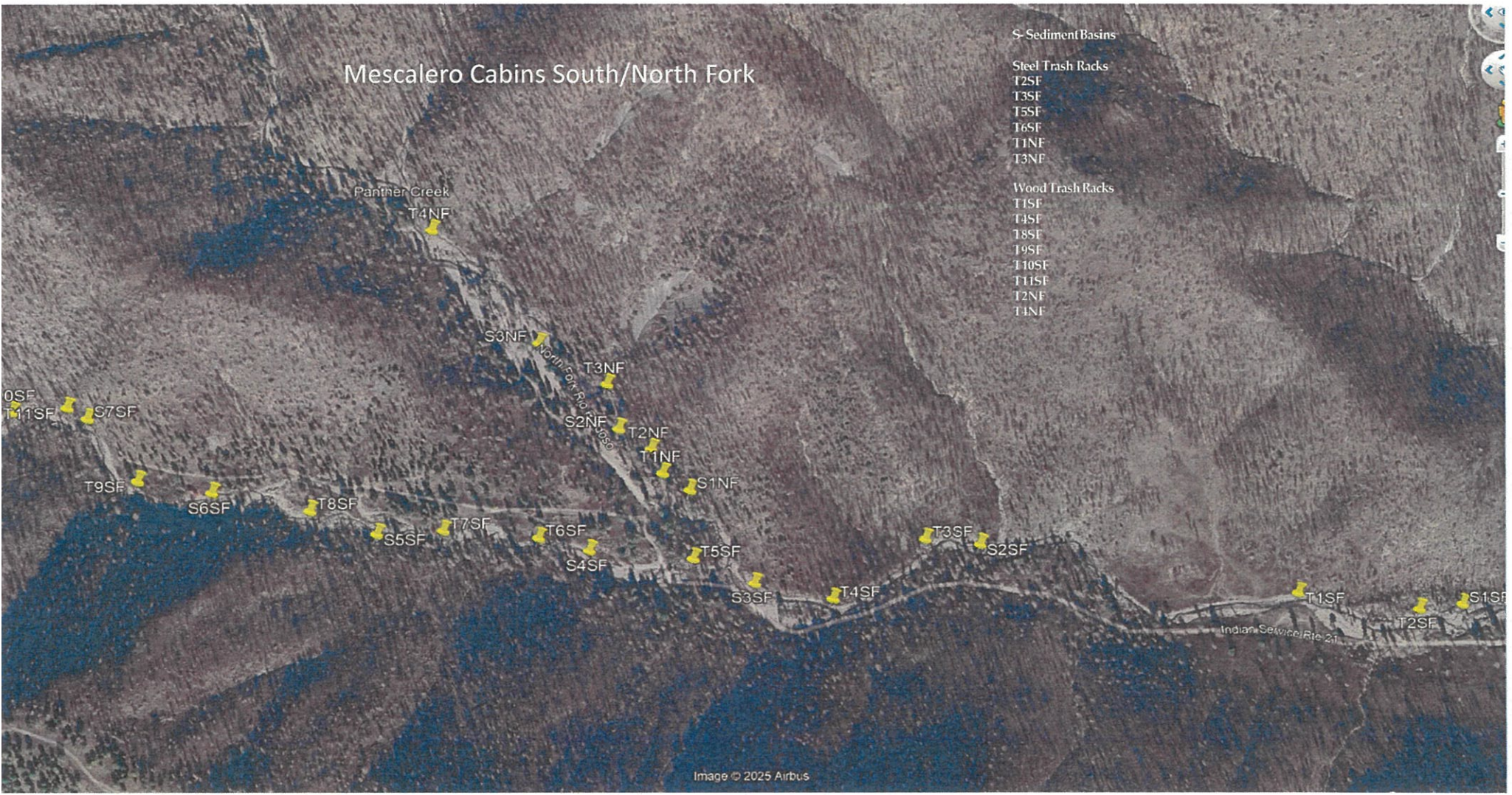
S Sediment Basins

Steel Trash Racks

- T2SF
- T3SF
- T5SF
- T6SF
- T1NF
- T3NF

Wood Trash Racks

- T1SF
- T4SF
- T8SF
- T9SF
- T10SF
- T11SF
- T2NF
- T4NF



Bear Canyon

S- Sediment Basins

Steel Trash Racks

T1BC

T2BC

Wood Trash Racks

T3BC

T4BC

T5BC

T6BC

T7BC

T8BC

T9BC

T10BC

Click and drag to rotate, or click

T2BC

S2BC

T1BC

T3BC

T4BC

S1BC

T5BC

T6BC

T7BC

T8BC

T9BC

T10BC

HWY 70 Cherokee Bill

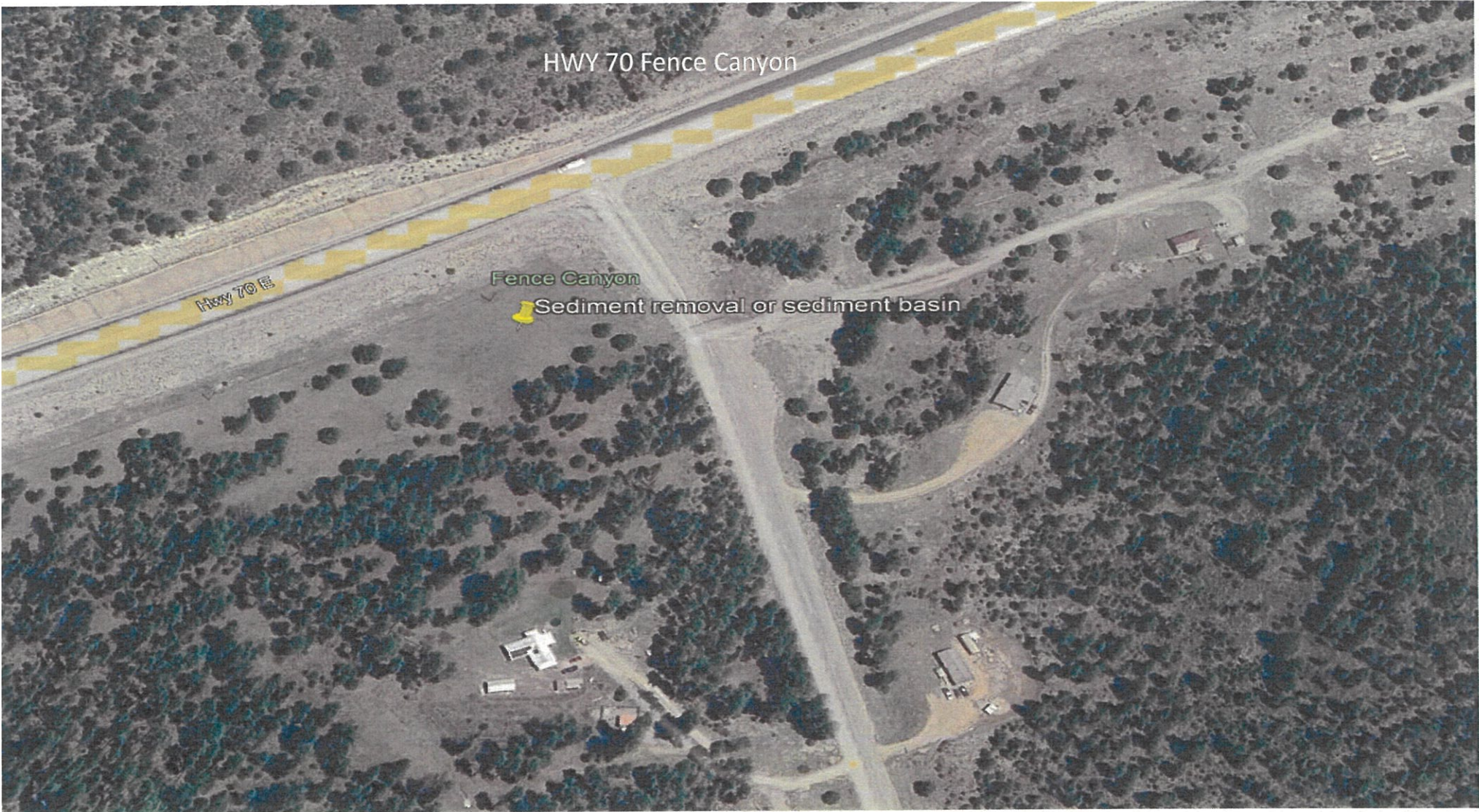
70

Sediment removal or sediment basin

HWY 70 E

Sediment removal or sediment basin





HWY 70 Fence Canyon

Hwy 70 E

Fence Canyon

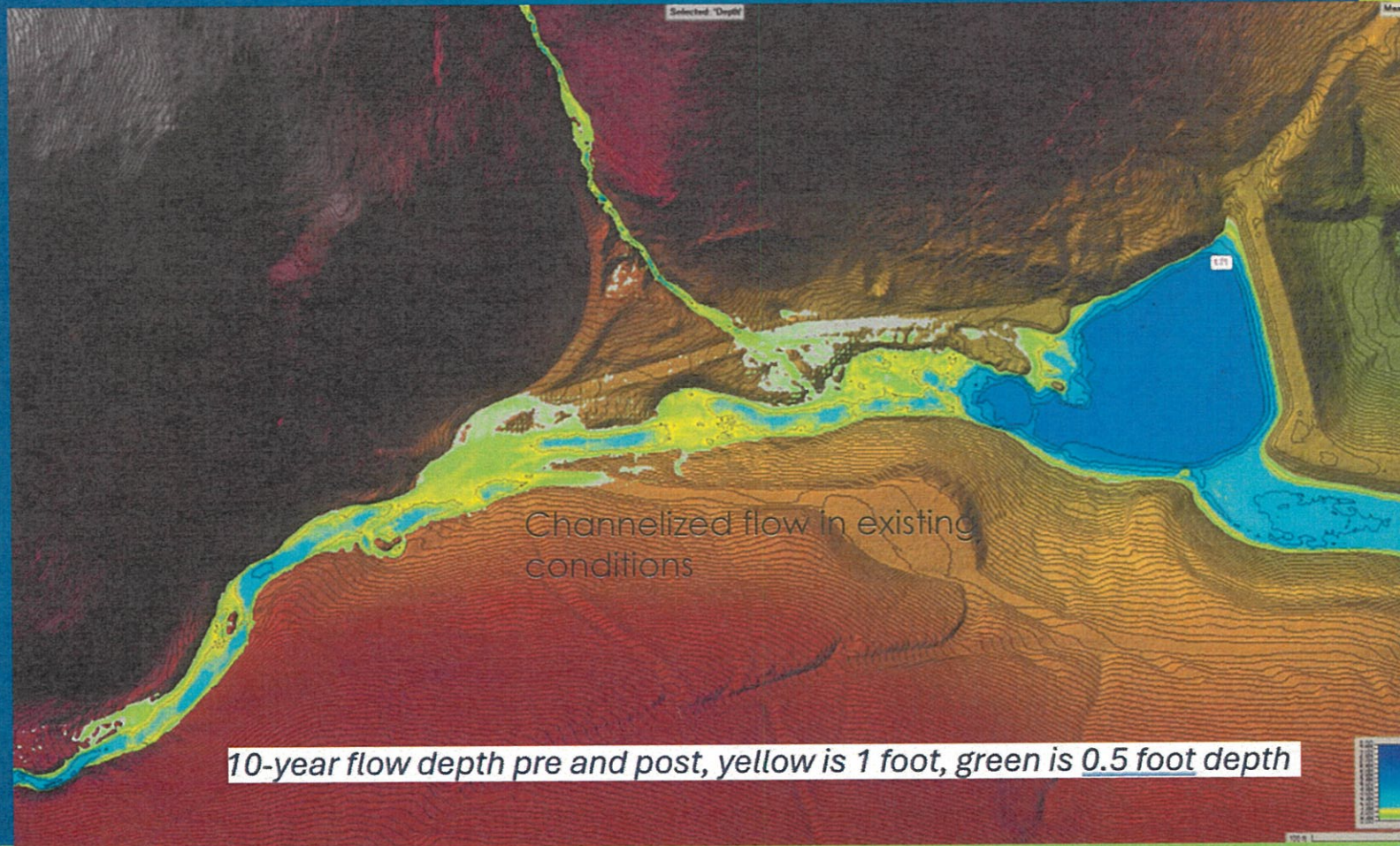
Sediment removal or sediment basin

Lidar collected in South Fork, North Fork & Eagle Creek areas

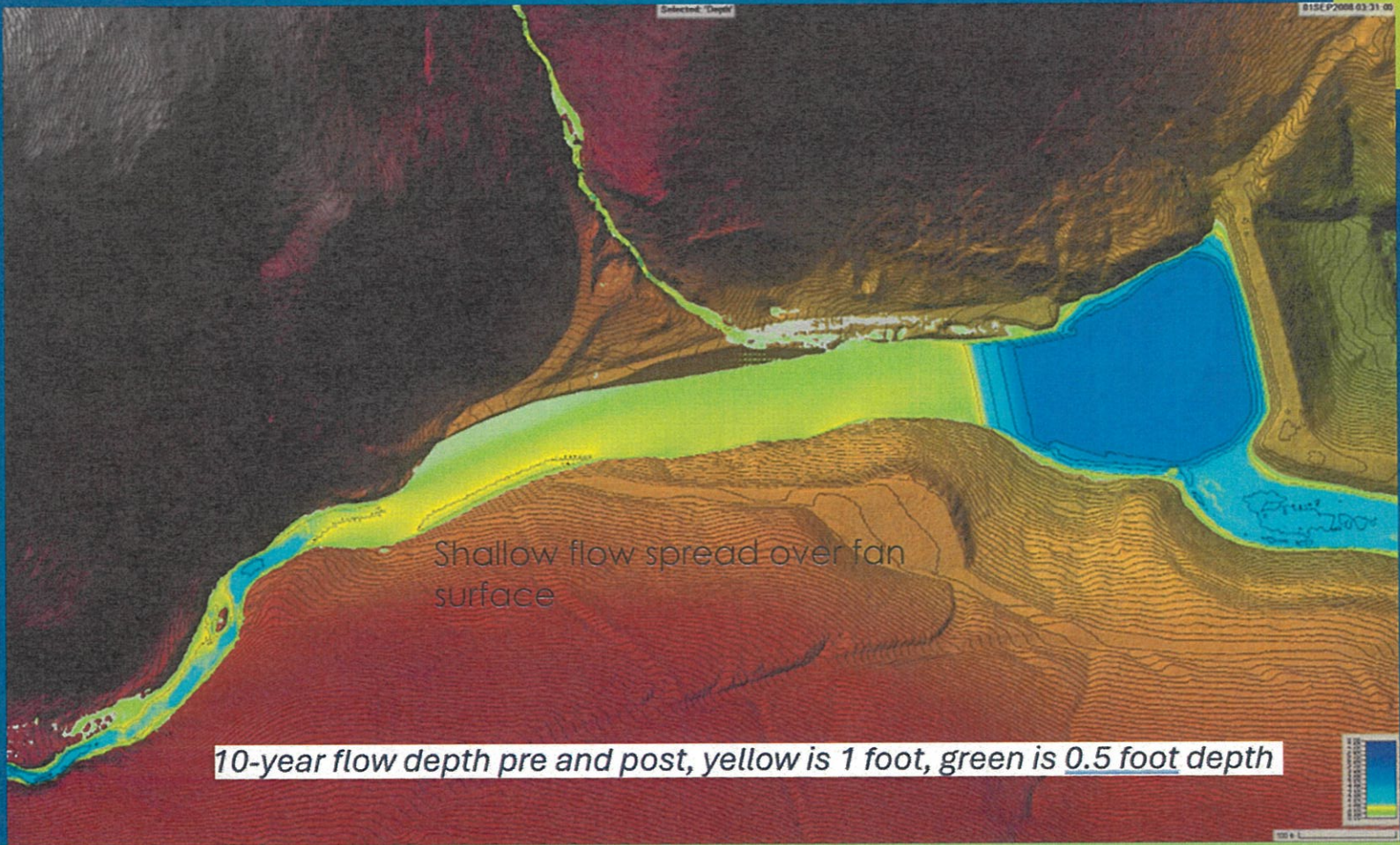


Natural Channel Design
Engineering, Inc.
www.naturalchannel.com

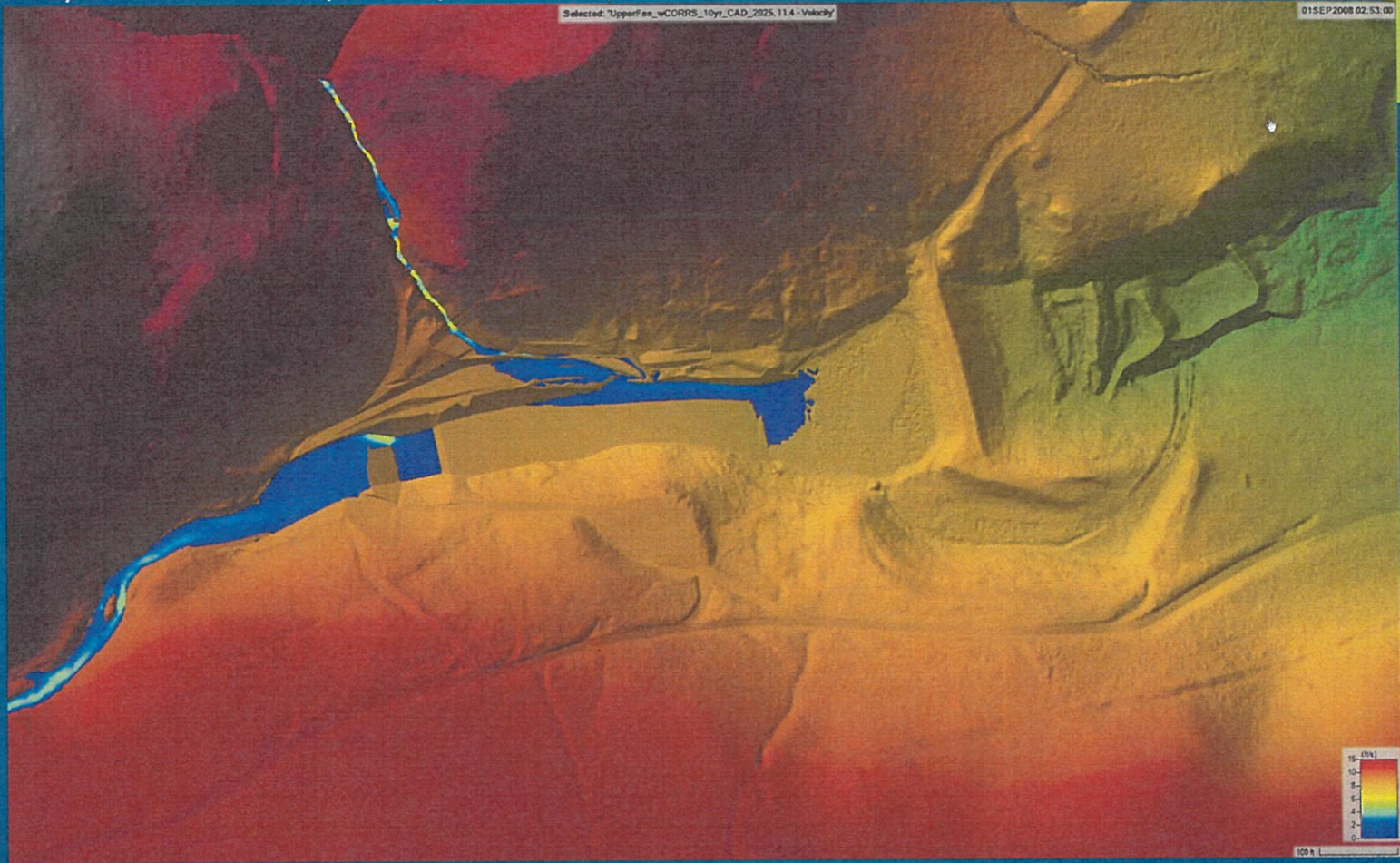
10-yr storm, depth plot over existing conditions (2025 LIDAR)



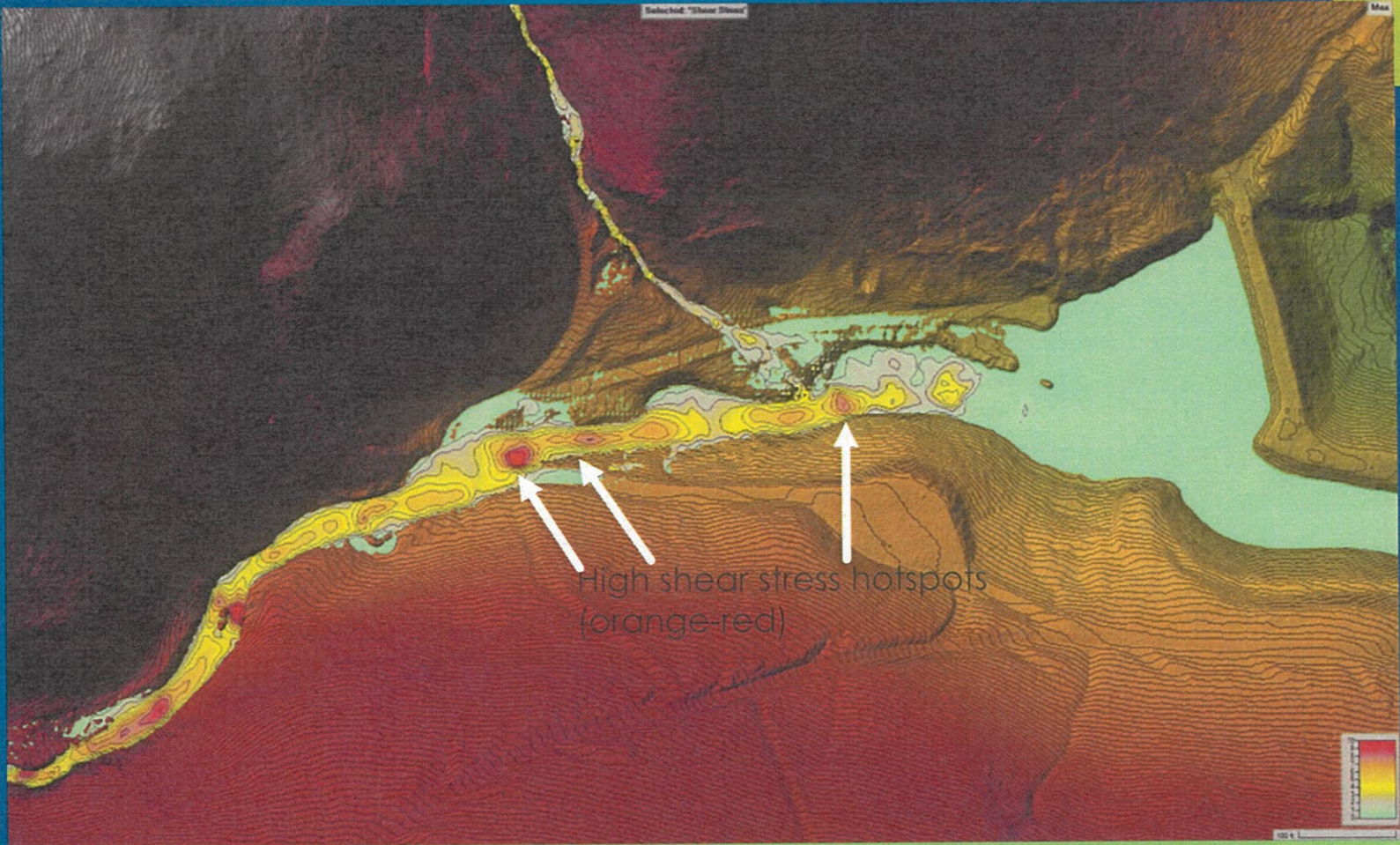
10-yr storm, depth plot over preliminary design



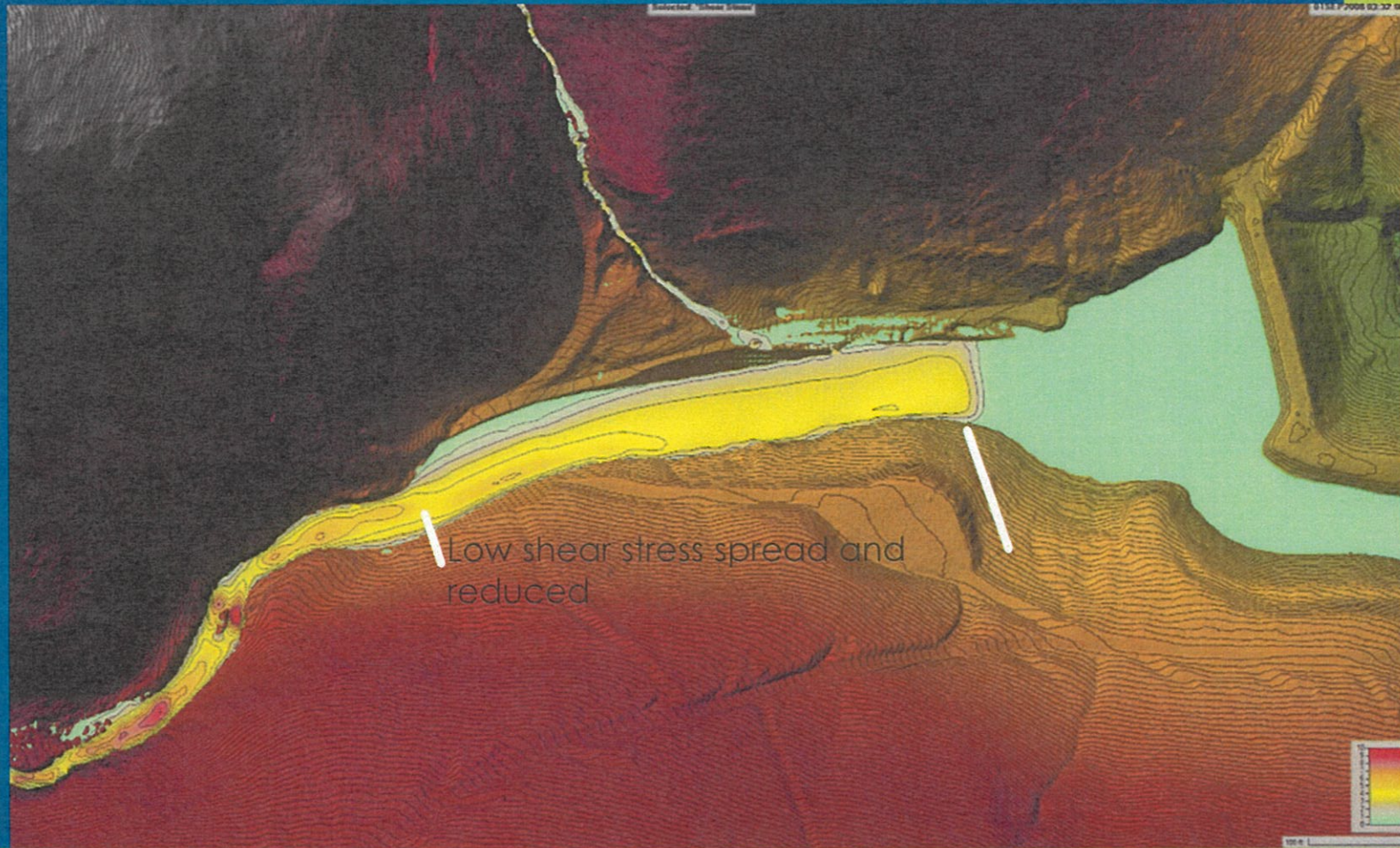
10-yr storm, velocity over preliminary design



10-yr storm, shear plot over existing conditions (2025 LIDAR)



10-yr storm, shear plot over existing conditions (2025 LIDAR)



Rio Ruidoso Fan 1 North (Cow canyon)

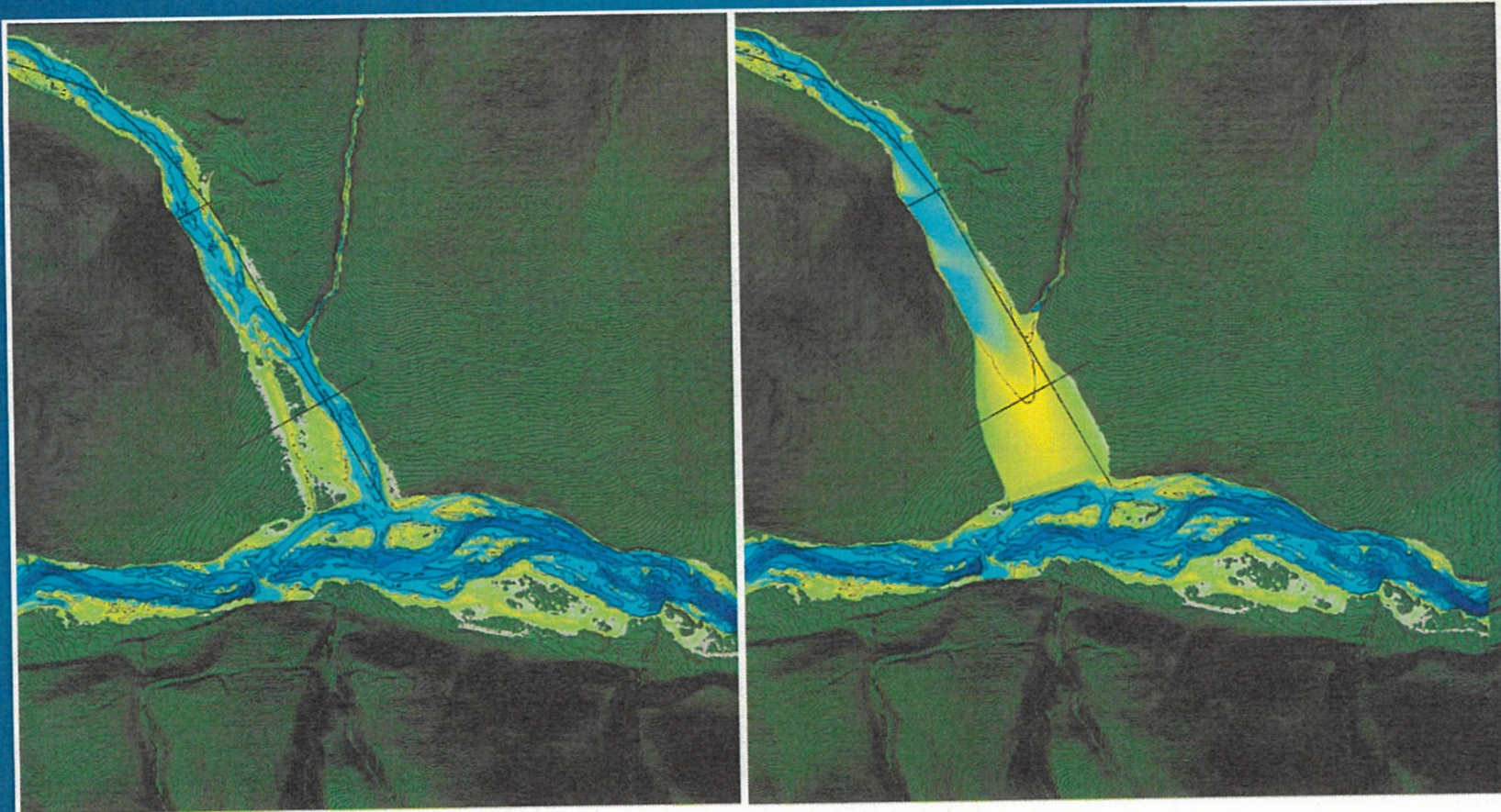


Figure 2 10-year flow depth pre and post, yellow is 1 foot, green is 0.5 foot depth

Rio Ruidoso Fan 1 North (Cow Canyon)

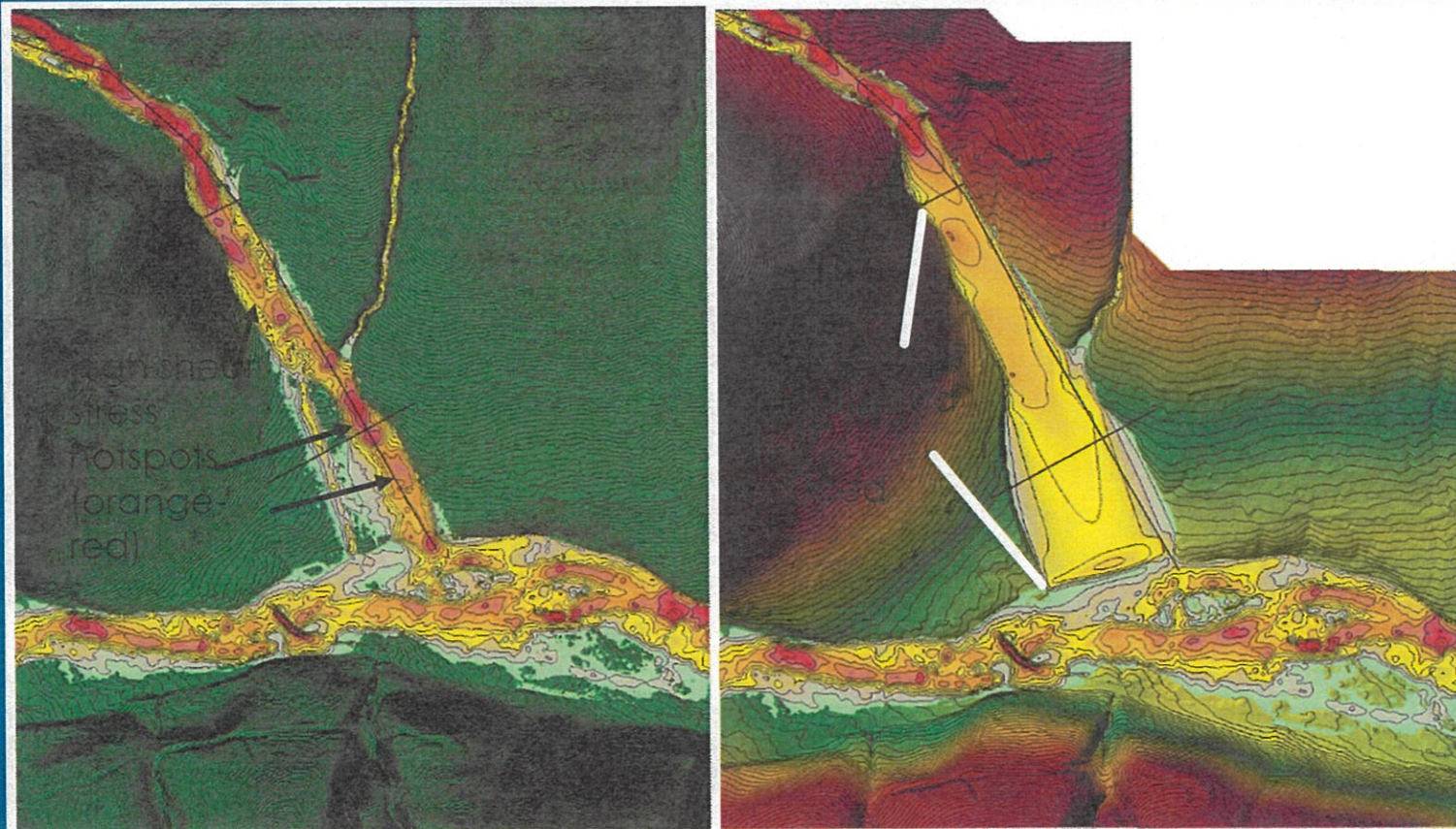


Figure 3 Shear stress at the 10-year event