



Economic Outlook

Welcome Economic & Rural
Development & Policy Committee!

Tuesday, June 30th, 2026



VILLAGE *of*
LOS LUNAS
NEW MEXICO



LOS LUNAS

Our roots run deep and we cultivate our businesses with care



Established in 1716 and incorporated in 1928, Los Lunas has rapidly grown into an economic powerhouse in the greater metro area.

Our largest private employers are logistics & manufacturers:

- **Los Lunas Meta Data Center Campus (10 years)**
- **Walmart Distribution Center (25 years)**
- **Wall Colmonoy (26 years)**
- **Niagara Bottling**
- **Fresenius Medical Care**
- **Accurate Machine & Tool**
- **Amazon Fulfillment Center (2024)**
- **Pacific Fusion (2025)**

COMMUNITY ASSETS



Pro-Business Community
Availability of industrial sites
Easy transportation access
Available workforce
Available housing

Growing tech ecosystem
Established business incubator
University satellite campus (2)
Quality of life
Growing Population
Proximity to Albuquerque & SNL

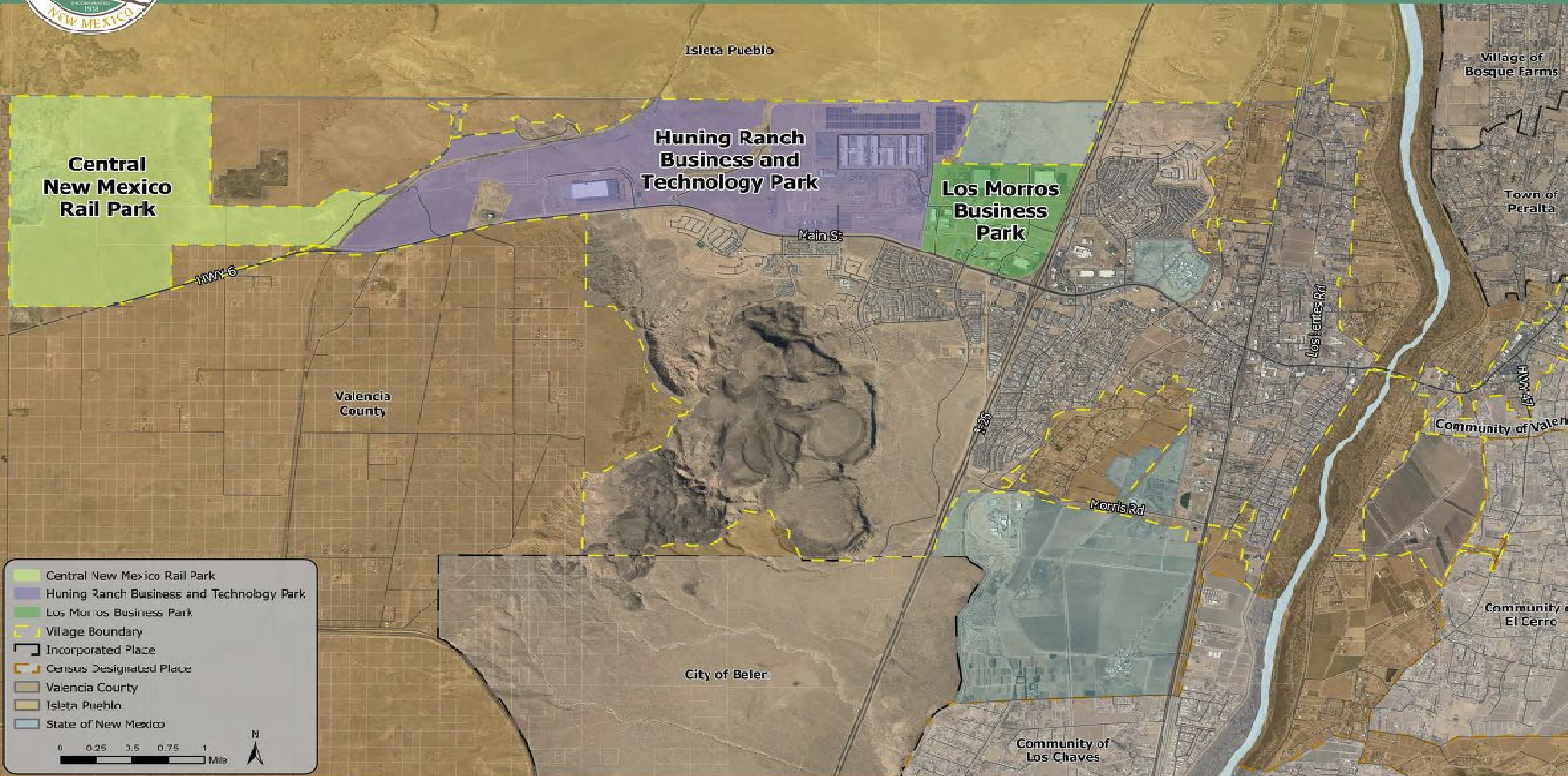


WORKFORCE TRAINING

NM
VALENCIA
WORKFORCE TRAINING CENTER
505.925.8500 • VALENCIA.UNM.EDU



VILLAGE OF LOS LUNAS BUSINESS PARKS



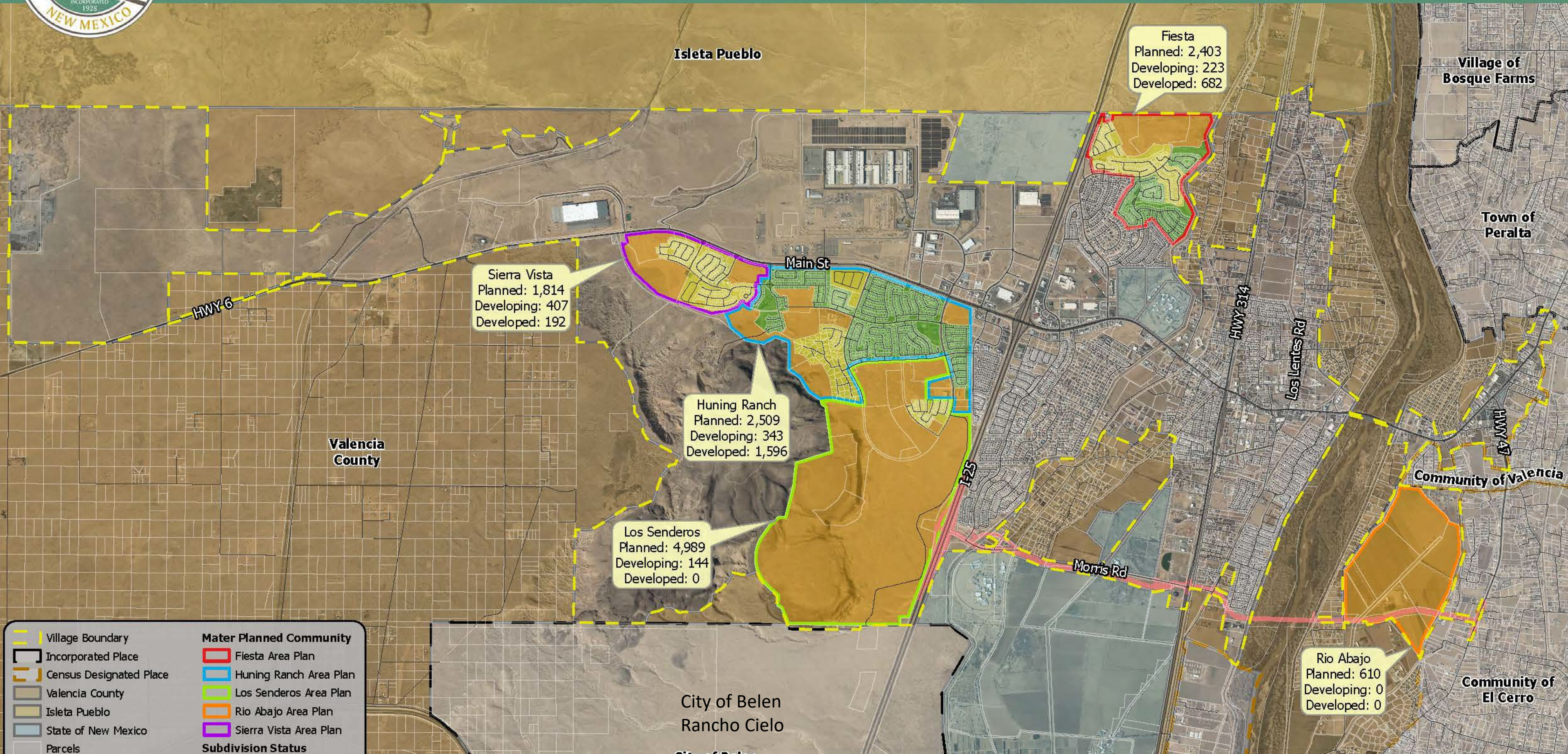
- Central New Mexico Rail Park
- Huning Ranch Business and Technology Park
- Los Morros Business Park
- Village Boundary
- Incorporated Place
- Census Designated Place
- Valencia County
- Isleta Pueblo
- State of New Mexico

0 0.25 0.5 0.75 1 Mile

N



VILLAGE OF LOS LUNAS MASTER PLANNED COMMUNITIES



Sierra Vista
 Planned: 1,814
 Developing: 407
 Developed: 192

Huning Ranch
 Planned: 2,509
 Developing: 343
 Developed: 1,596

Los Senderos
 Planned: 4,989
 Developing: 144
 Developed: 0

Fiesta
 Planned: 2,403
 Developing: 223
 Developed: 682

Rio Abajo
 Planned: 610
 Developing: 0
 Developed: 0

	Village Boundary	Master Planned Community	
	Incorporated Place		Fiesta Area Plan
	Census Designated Place		Huning Ranch Area Plan
	Valencia County		Los Senderos Area Plan
	Isleta Pueblo		Rio Abajo Area Plan
	State of New Mexico		Sierra Vista Area Plan
	Parcels	Subdivision Status	

Conceptual Renderings | 11

NEW MEXICO NEWS

Valencia County begins construction of new hospital in Los Lunas



NEW HOSPITAL



Expansion #2

META DATA CENTER EXPANSION

1,200-acre campus

Third Expansion Announced

5.2 million sq ft upon completion

Generative AI Infrastructure

\$33M LEDA GRT Share Deal



Expansion #2
Almost complete

Meta's Current 2nd Expansion

NEW MEXICO NEWS

Study: Facebook's Los Lunas Data Center represents \$1B investment in New Mexico

DATA CENTER IMPACT

Since 2015 - \$11M+ in GRT

Dec. 2024 - \$5M in GRT

>\$7M/month GRT at the height of construction

Last year - \$41M in GRT

Since 2015, GRT increase above base year = \$189M

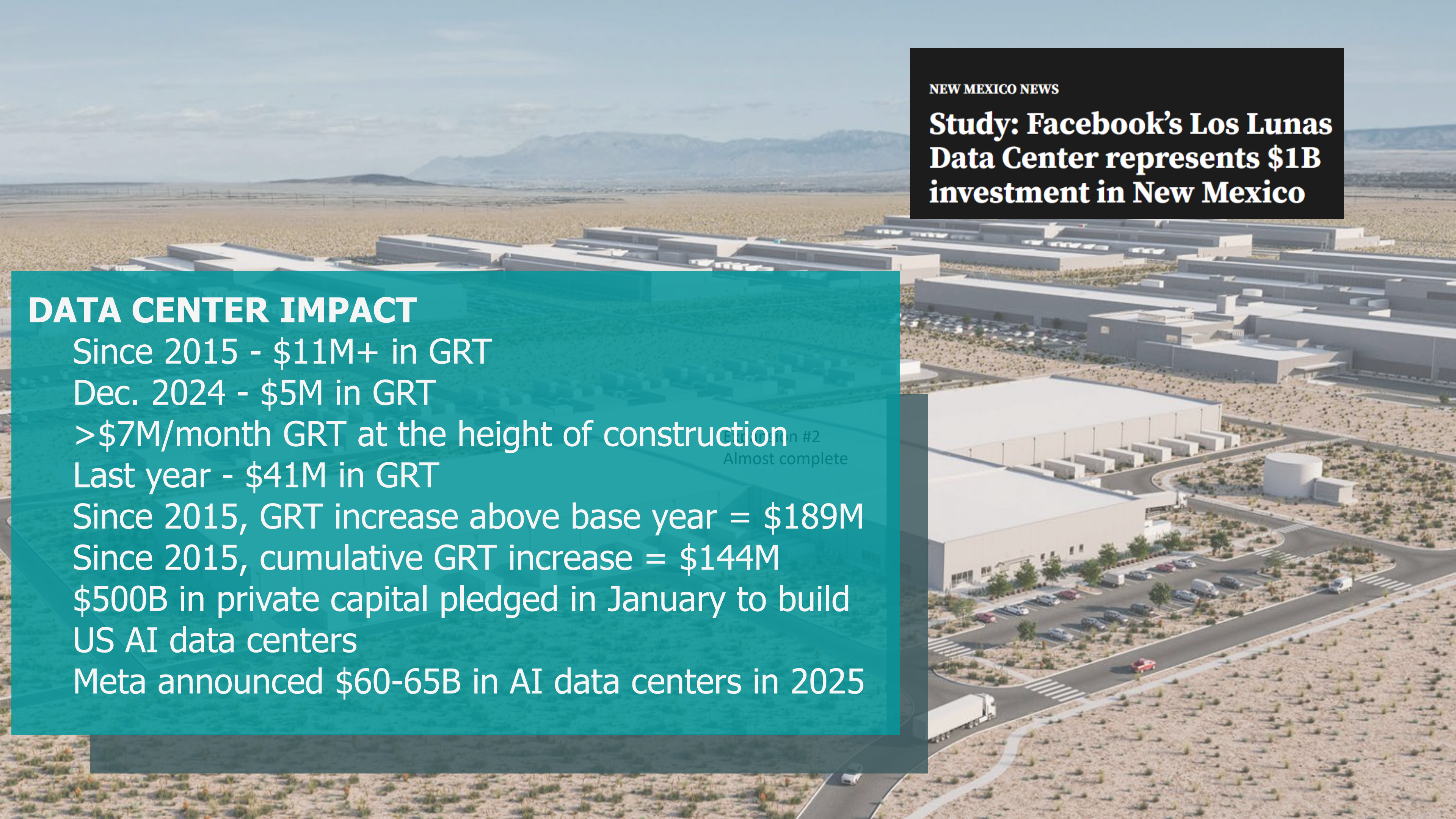
Since 2015, cumulative GRT increase = \$144M

\$500B in private capital pledged in January to build

US AI data centers

Meta announced \$60-65B in AI data centers in 2025

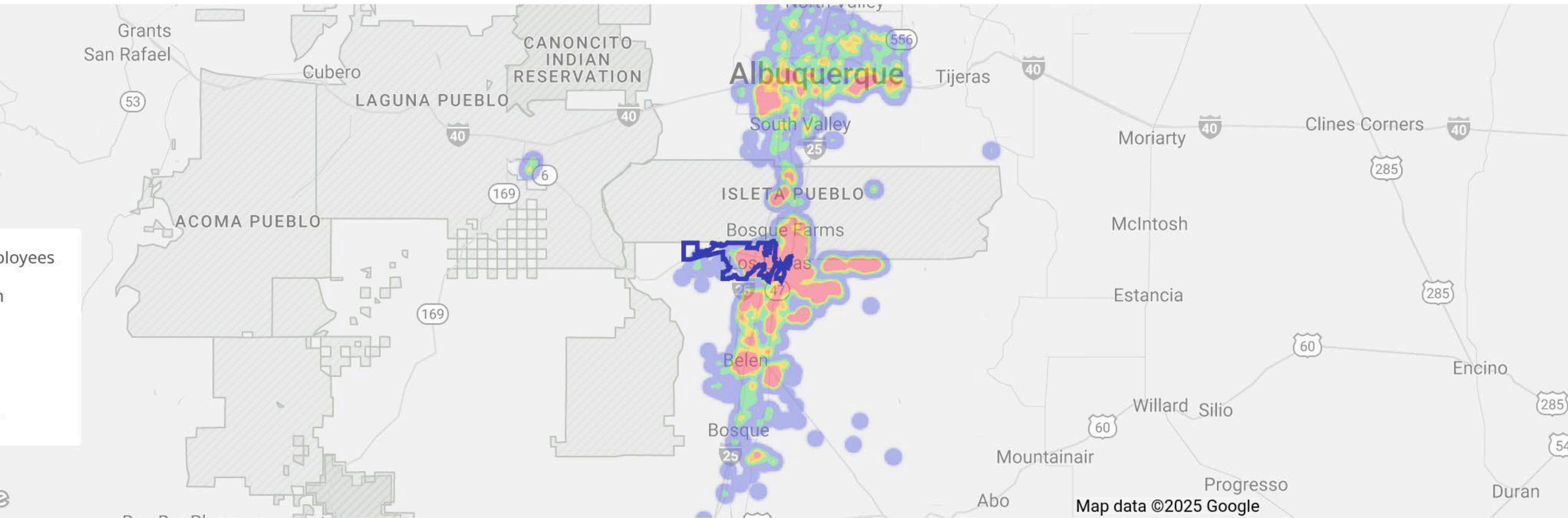
Building #2
Almost complete



WORKFORCE DATA

Lunas

• New Mexico



Locations are obfuscated for privacy and randomly placed within a census block. They do not represent actual home addresses.

, 2024 - May 31st, 2025

provided by Placer Labs Inc. (www.placer.ai)

TOP INDUSTRIES

<u>Industry</u>	<u>2019 Jobs</u>	<u>2024 Jobs</u>	<u>Job Growth</u>
Restaurants and Other Eating Places	1,084	1,118	3%
Individual and Family Services	504	867	72%
Warehousing and Storage	576	736	28%
Education and Hospitals (Local Government)	711	696	-2%
Building Equipment Contractors	609	643	6%
Warehouse Clubs, Supercenters, Retailers	388	478	23%
Nonresidential Building Construction	221	321	45%
Building Material and Supplies Dealers	284	319	12%
Grocery Stores	250	266	6%
Local Government, Excluding Edu & Hospitals	182	223	23%

FASTEST GROWING

Industry	2019 Jobs	2024 Jobs	Job Growth
General Freight Trucking	33	158	379%
Computing Infrastructure Providers, Data Processing, Web Hosting	55	140	155%
Elementary and Secondary Schools	68	119	75%
Individual and Family Services	504	867	72%
Home Health Care Services	118	187	58%
Outpatient Care Centers	68	103	51%
Nonresidential Building Construction	221	321	45%
Nonferrous Metal (except Aluminum)	72	102	42%
Production and Processing	72	102	42%
Residential Building Construction	83	108	30%
Warehousing and Storage	576	736	28%



NEW INFRASTRUCTURE



Over 50 active projects

- I -25 Interchange
- Water & Sewer upgrades & extension



LOS LUNAS BLVD

Los Lunas Blvd

- Two new bridges & ramps
- Allows access to Los Senderos development



Los Lunas Blvd

- Multi-use trail
- Allows for improved traffic circulation





Los Lunas Blvd

- New intersection at HWY 314
- Improved rail crossing with pedestrian and vehicle gates



Los Lunas Blvd

- 4 Lane 2,000 ft bridge
- Expands access to HWY 47 across Valencia County



NEW MEXICO NEWS

Village of Los Lunas breaks ground on \$185 million I-25 interchange project















VILLAGE *of*
LOS LUNAS
NEW MEXICO

Thank you!