



HEALTH SCIENCES

OFFICE FOR COMMUNITY HEALTH

MATTHEW PROBST, PA-C
DIRECTOR OF RURAL ENGAGEMENT





Roadmap to Recovery

BUILDING WORKFORCE WHILE SUPPORTING OUR YOUTH

It Takes a Village

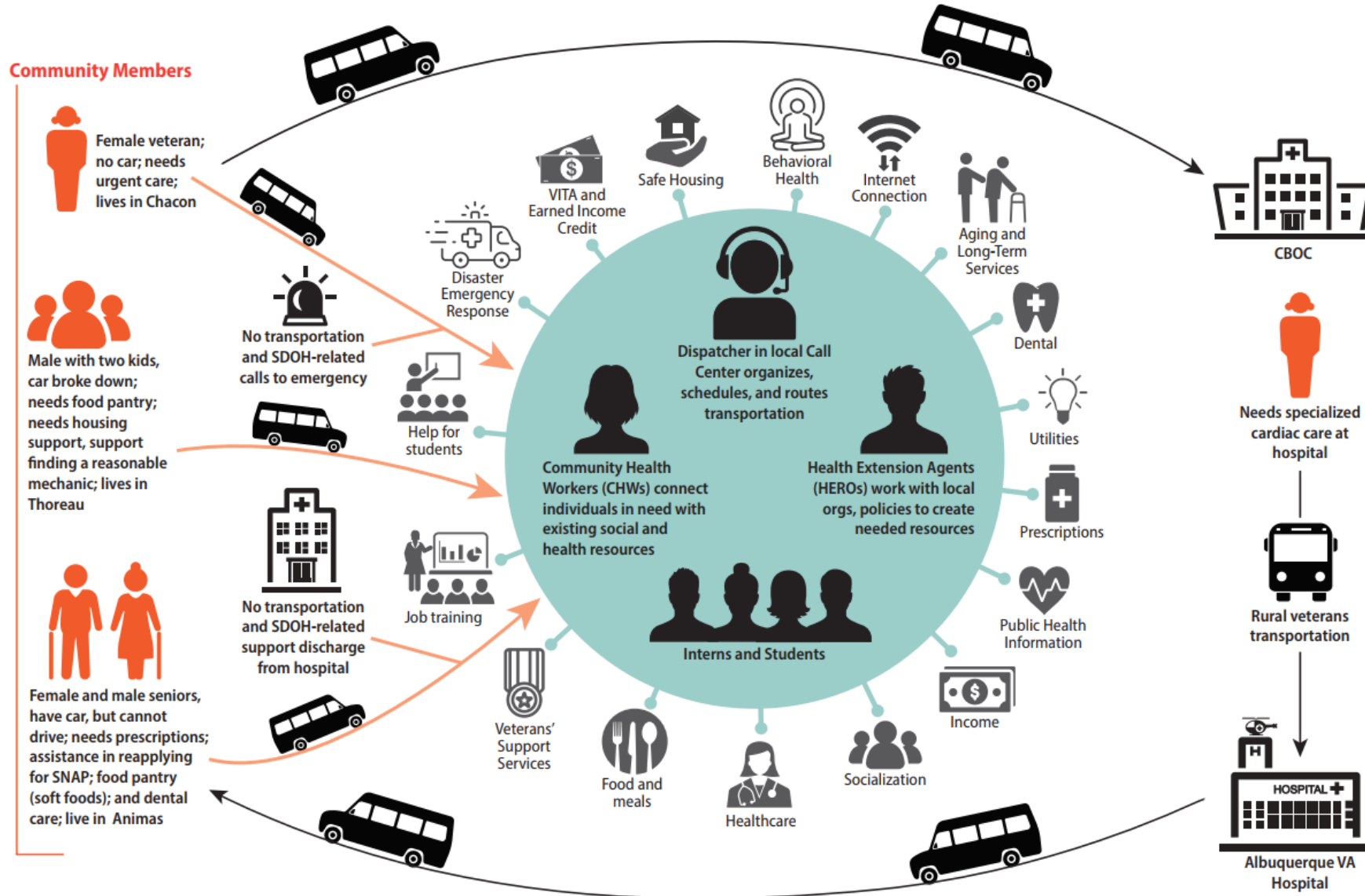
<https://www.pbslearningmedia.org/resource/86652a21-bd76-41d9-9e0b-7db3f1fe97e5/the-providers/>



- School-Based Health Centers (SBHC)
- School Boards and Administrators
- School Nurses and Counselors
- School Teachers
- Student Health Advisory Committees
- County Health Councils
- Local Hospitals
- Community Health Centers and Local Providers
- Public Health Offices (DOH)
- Land Grants and Acequias
- Higher Education / Academic Centers
- Area Health Education Centers (AHEC)
- Public Libraries
- Local First Responders and Volunteers
- STEM Clubs – FFA, 4H, MESA, Dream Makers (health careers)
- Farmers Markets, Community Gardens, NMSU Cooperative Extension

Rural Transportation Mobility Hubs

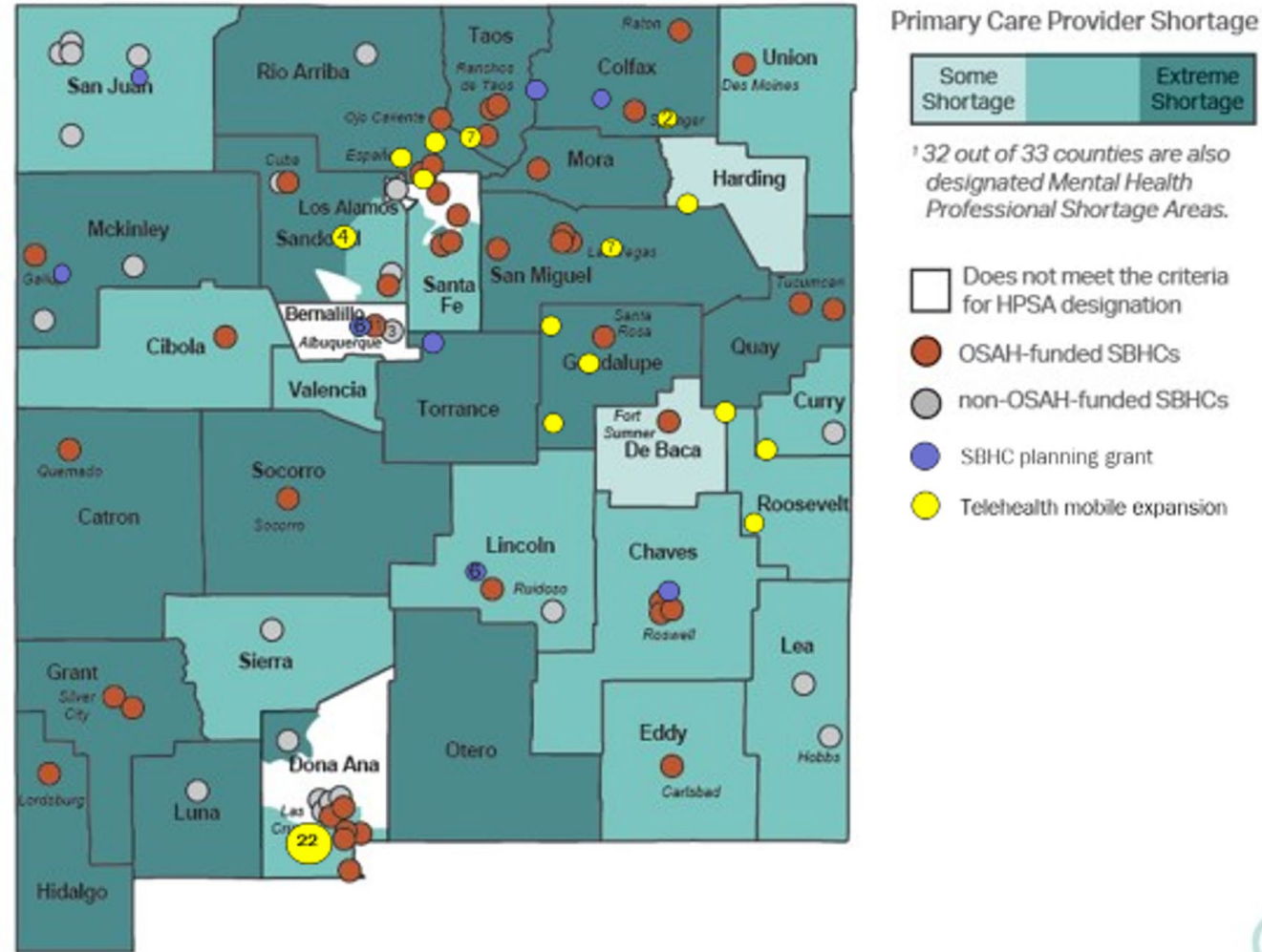
Community-Responsive, Needs-Driven Public Transportation Pilots Using a Local "Hub and Spokes" Model



UNM: Will train Dispatchers, HEROs, CHWs; Will develop and grow its "Health Mobility Hub" model, will provide Program Evaluation and will mobilize expertise with sustained funding opportunities from all colleges re: SDOH. **Roadrunner Food Bank:** Will coordinate food distribution with "last mile" deliveries from local transport, expand their statewide transport system to fill other SDOH needs and forge links between this project and statewide consortia addressing SDOH. **Medicaid Managed Care Organizations:** will contribute to social referral platform, contribute funds to local transportation systems, and assist in funding case workers, CHWs, navigators.

NM School-Based Health Center Expansion

Providing Care in Underserved Communities ¹



The Role of Every SBHC

- Being a collaborative member of the health care and education community
- Assessing career goals during preventative visits
- Supporting peer health education
- Providing shadowing and clinical rotations
- Connecting youth to other mentors and the health care community



UNM Health Sciences

Office for Community Health

Health Extension Regional Offices - HEROs aim to link University of New Mexico Health Sciences Center programs and resources to rural and underserved communities across the mission areas of education, clinical service, research and health policy with the vision of working with community partners to improve health and health equity throughout the state.

Community Health Worker Initiatives – The Community Health Worker Initiatives Unit was created in 2014 as part of the University of New Mexico, Office for Community Health with the mandate to design, implement, and evaluate projects that utilize CHWs as a strategy to increase New Mexican’s well-being, promote health equity, and minimize the negative impacts associated with the social determinants of health.

Area Health Education Center - The New Mexico AHEC belongs to a federally funded national network dedicated to growing a diverse health care workforce and serving rural and underserved communities by offering innovative health career curricula to pre-collegiate students.

Health Extension Regional Offices

HERO Agents

- Live in community
- Link local health needs with UNM resources
- Improve local health services and systems
- Encourage youth to finish school and enter health careers
- Recruit and retain a local health workforce
- Bring latest research and health care practices to community
- Strengthen community capacity to address local health problems



Community Health Worker Initiatives

The mission of the CHWI is to contribute to the enhancement and integration of Community Health Workers (CHWs) into the NM workforce in an effort to increase health equity.



MONTAÑAS DEL NORTE AHEC

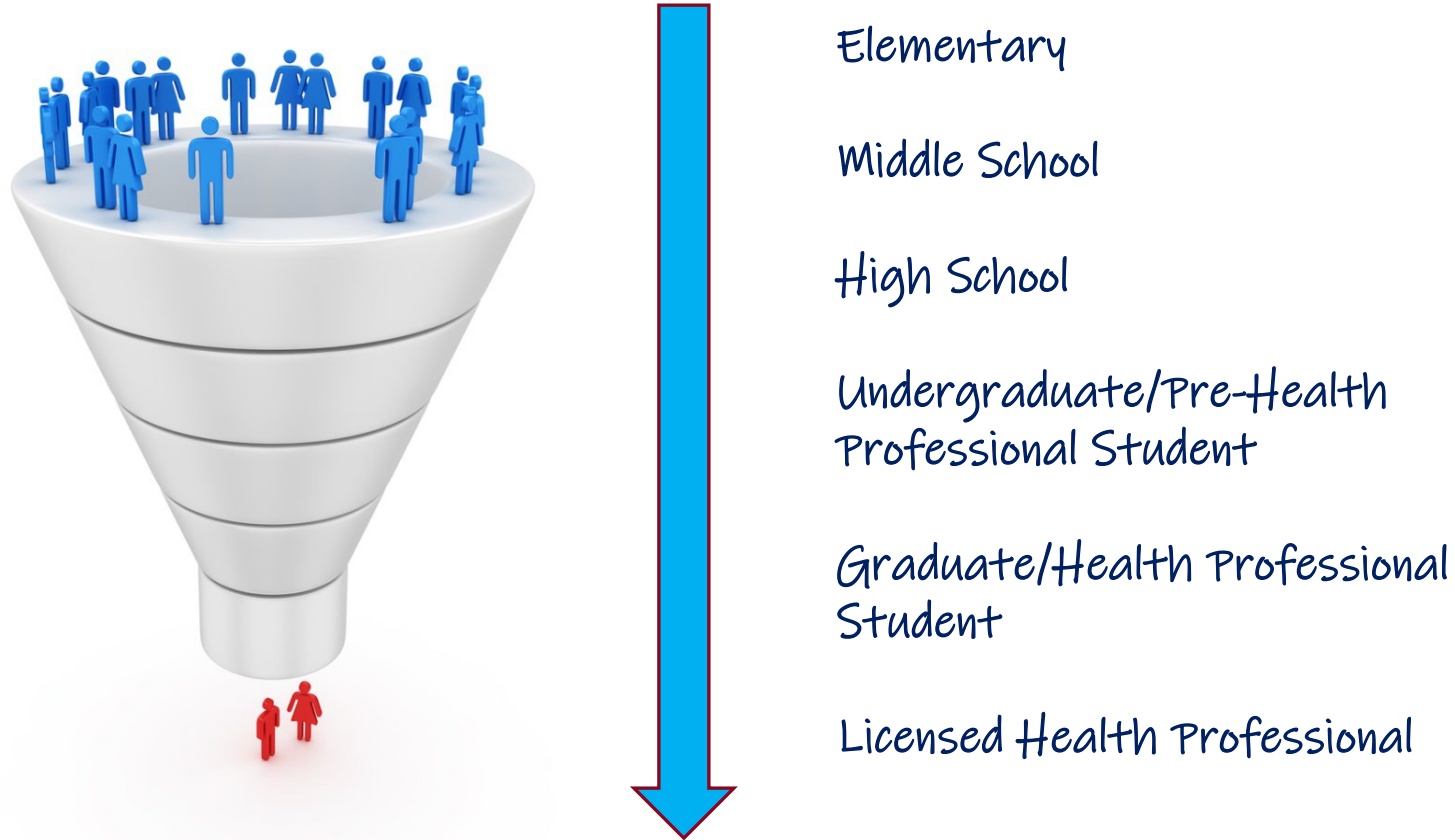
Mission:



“To enhance access to quality health care, particularly primary and preventative care by improving the supply and distribution of health care professionals through community-academic partnerships.”

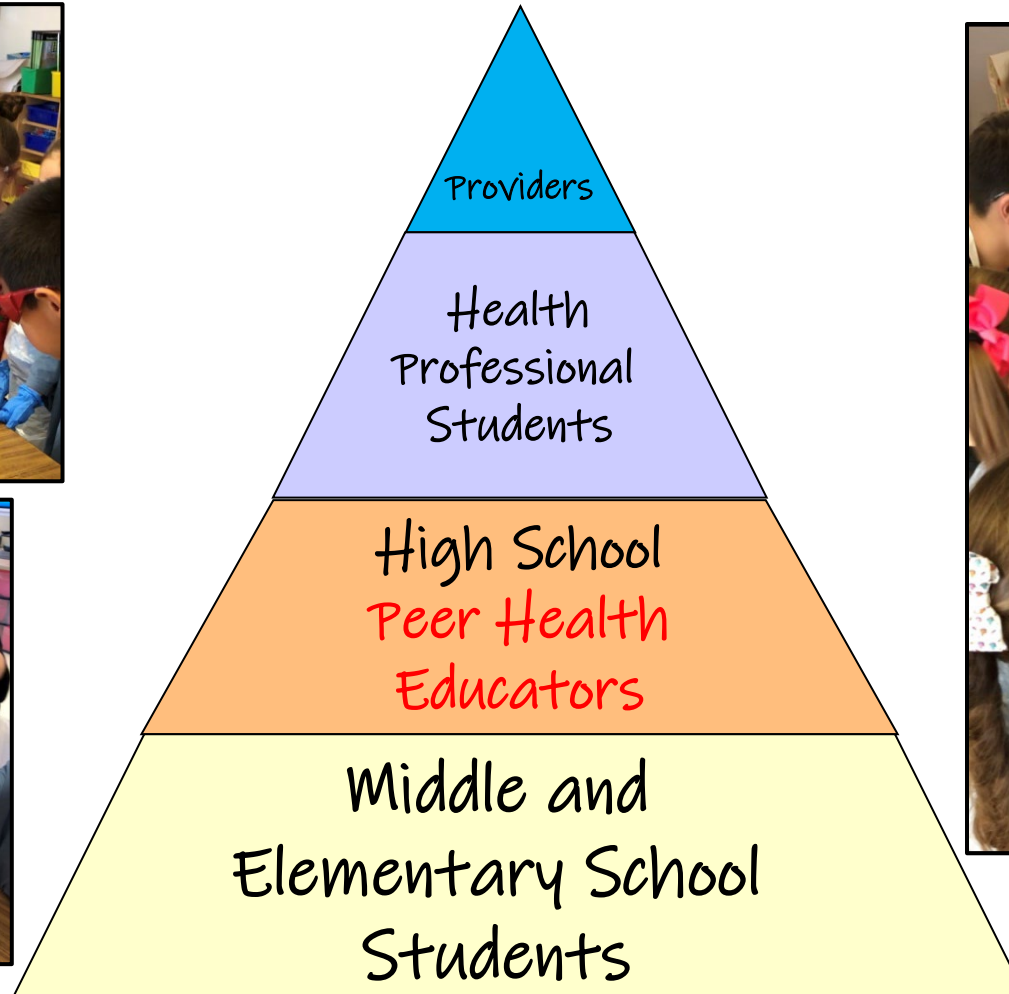
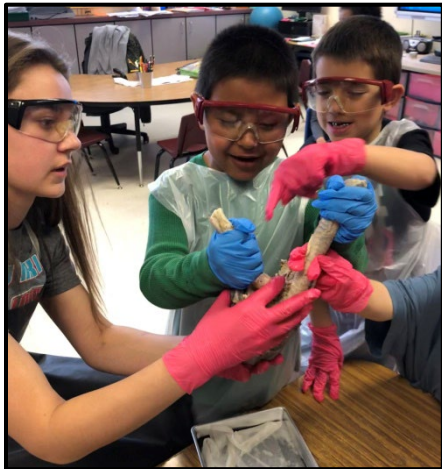
Regional Clinical Rotation Coordination Pilot

Bursting the Bottleneck in the Funnel



Sowing many seeds yields the best **HARVEST**

Health Care Workforce Multipliers



Pyramiding "WE"llness!

Office of Diversity, Equity and Inclusion Role

Support, Resources & Learning Programs

University of New Mexico's spirited community of vibrant learners, faculty and staff reflect the rich diversity of our great state. We are dedicated to endlessly learning, supporting you and doing better together.

**Communities
to Careers**



ENLACE



STEM-H



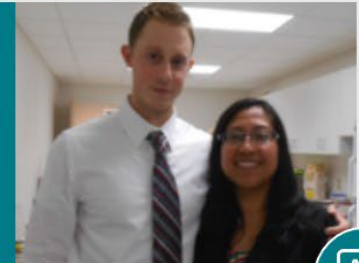
DEI News



**Student
Resources**



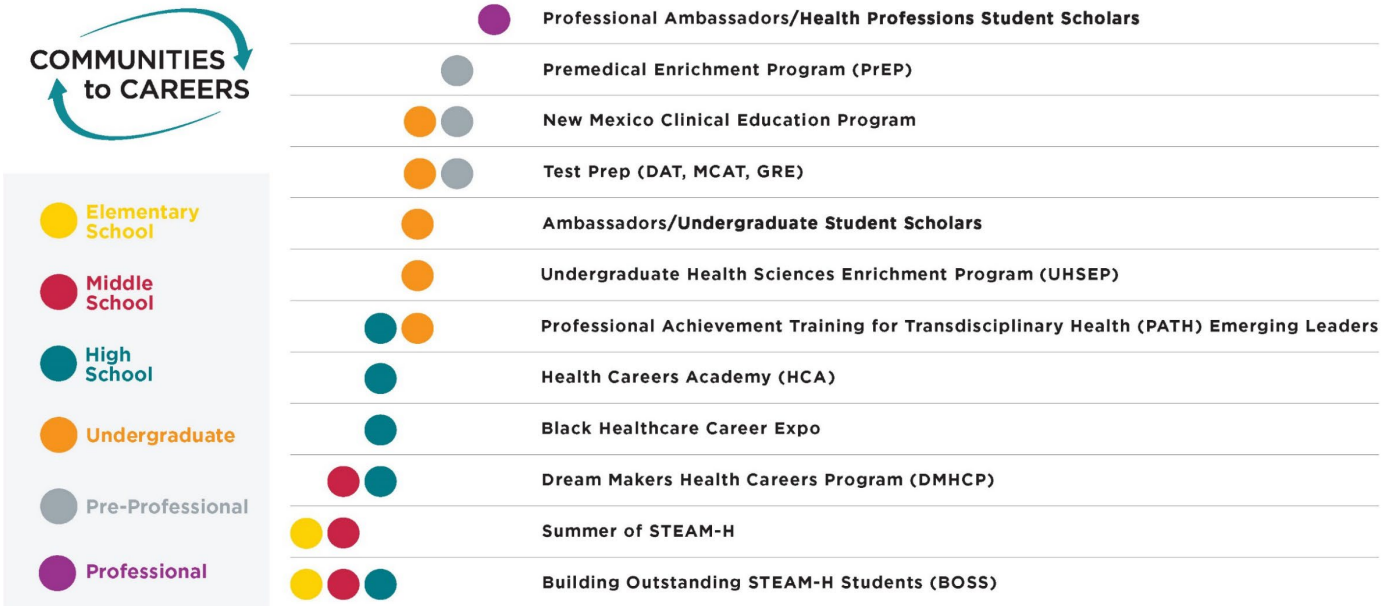
**White Coats 4
Black &
Indigenous
Lives**



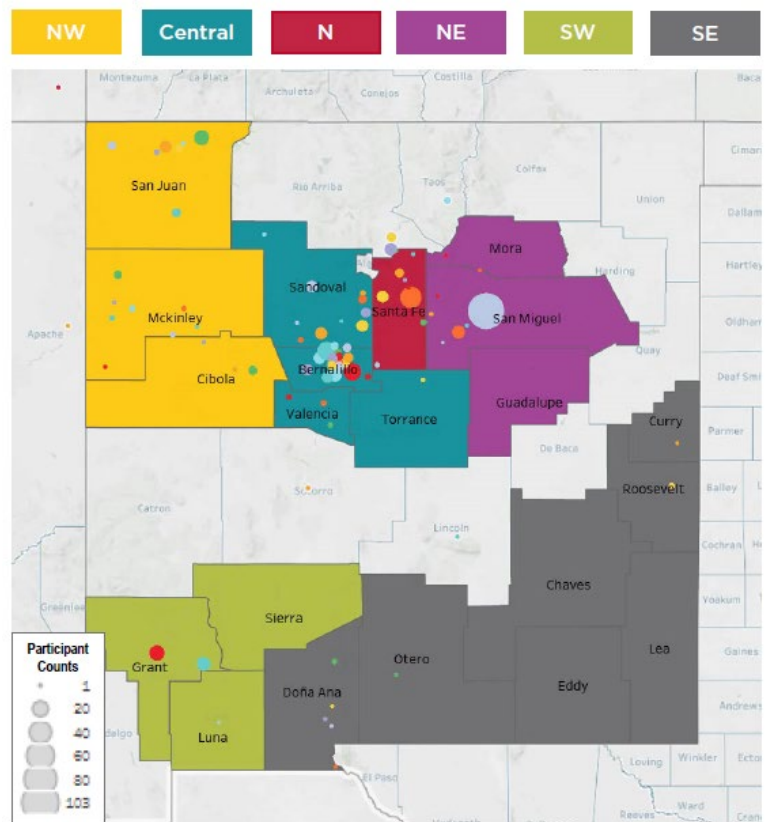
A

Communities to Careers (C2C)

Growing New Mexico's Diverse Health Care Workforce

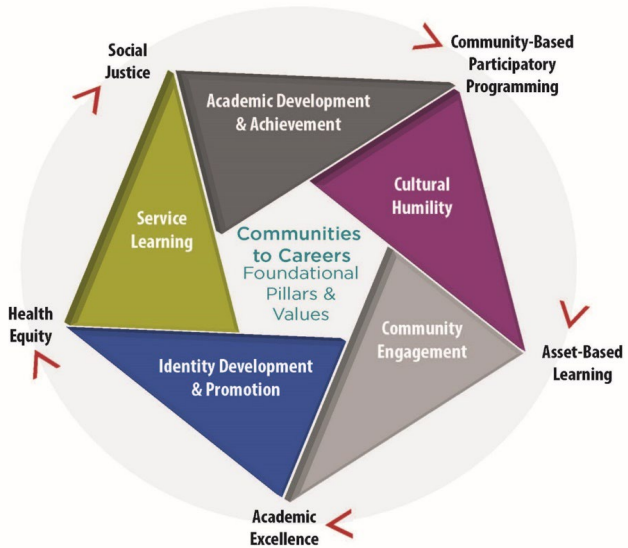


Communities to Careers (C2C) Health Careers Pathways Regional Hubs provide local coordination, evidence-based program models, and partnerships in rural and underserved areas of NM, to inspire, train, and support diverse K-20+ students with access and preparation for health science education and careers.

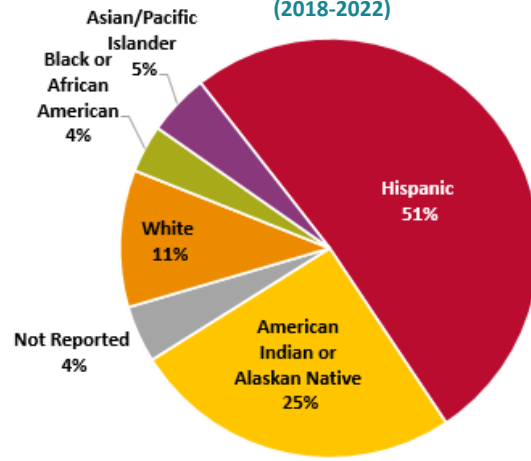


458 Certificates, Associates, Bachelor's, Master's, or Doctorate degrees have been earned by C2C alumni since 2011, with **59** Doctorates in health fields.

C2C Conceptual Framework



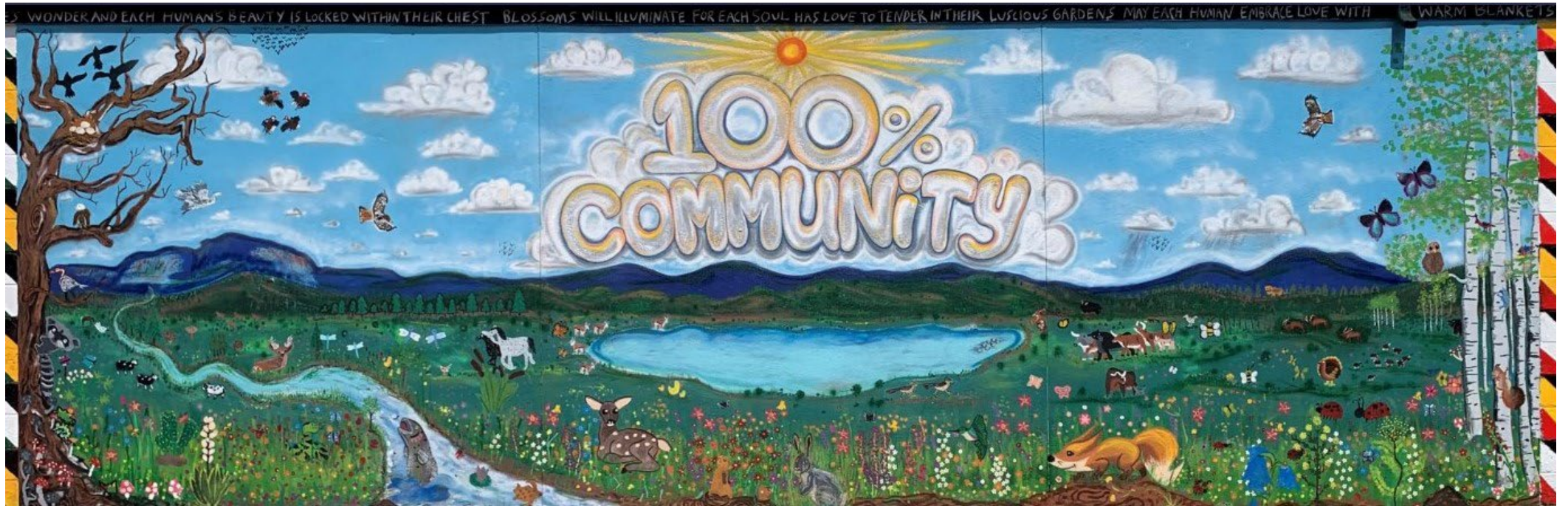
C2C Participant Demographics (2018-2022)



1391 Participants | 31% first generation college | 60% Rural

100% CommUNITY Youth Center

<https://vimeo.com/587937880>



Health Career Academy



**2021–100%
Access to Job
Training**

- **Summer Health Career Academy**
- **First Responder Day – EMT, Fire, Law Enforcement**
- **Semillas ECHO**

102

Fighting Adverse Childhood Experiences



2021 – 100% Access to OpportUNITY: GRACE – Grace’s Referral and Assessment Center for Everyone

- **San Miguel County Juvenile Justice Programming**
- **HOMIES – At Risk Youth Mentoring and Vocational Training**
- **Big Brothers Big Sisters**
- **Boys and Girls Club**

Local Government Support



San Miguel County 100% Community Resolution

RESOLUTION NO. 12-20-22-Commission

RESOLUTION IN SUPPORT OF 100% COMMUNITY ENSURING HEALTH CARE AND RELATED VITAL SERVICES FOR SURVIVING AND THRIVING IN SAN MIGUEL COUNTY, NEW MEXICO

WHEREAS, San Miguel County endorses a data-driven and countywide collaborative strategy with the goal of acknowledging historical healthcare disparities negatively impacting children, with the goal of strengthening a process of ensuring all children have access to medical, dental, and behavioral healthcare in community clinics and school-based health centers that lead to healthy children and students, safe households, school achievement, community engagement, job readiness, and a self-sufficient and healthy life in New Mexico; and,

WHEREAS, the positive social determinants of health include timely access to quality health, and San Miguel County is committed to ensuring that healthcare and services shown to increase the health of children, students and families are accessible to all; and,

WHEREAS, we understand that healthcare services are provided by a patchwork of public sector and private sector entities, some supported by the state, county, and city governments and that the strategy is not to ask county governments to fund all healthcare services; instead, it asks San Miguel County to leverage our people and policies to support and encourage all the providers of health care and vital services, as well as innovators throughout the public and private sectors, to work in alignment and collaboration; and,

WHEREAS, San Miguel County and partners have implemented tested frameworks and models for strengthening healthcare and the entire healthcare sector, including the 100% San Miguel model and the New Mexico Hub and Spoke School-Based Health Center expansion model, which is nationally recognized as a leading model for providing health care to every child in San Miguel County; and,

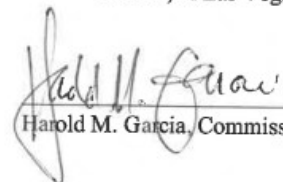
WHEREAS, 100% San Miguel County, working on the county level and regionally, is connecting the dots between healthcare services, healthcare workforce development and retention of healthcare professionals, and related vital family, and community services, informed by data and research, empowered by technology, and guided thoughtfully by collaboration and the commitment to work in alignment with the county, city, and tribal stakeholders; and,

WHEREAS, San Miguel County, collaborating with the 100% New Mexico initiative, has already established a multidisciplinary model to serve as the strategy to support capacity building across the state with the goal of ensuring healthcare access for every child that can be replicated in all counties

through a continuous quality improvement process of assessing, planning, action, and evaluation, in alignment with the New Mexico Primary Care Council's mission to provide healthcare access for all New Mexicans;

NOW, THEREFORE, BE IT RESOLVED, that San Miguel County Commissioners support the goal of ensuring each child has access to health care, guided by the 100% New Mexico vision and goal of ensuring that throughout San Miguel County the healthcare services shown to empower children, students, and families are accessible to 100% of our residents.

DONE, in Las Vegas, New Mexico, this 20th day of December, 2022.


Harold M. Garcia, Commission Chair

State Legislative Support

1 SENATE MEMORIAL 15

2 **55TH LEGISLATURE - STATE OF NEW MEXICO - FIRST SESSION, 2021**

3 INTRODUCED BY

4 Pete Campos

5
6
7
8
9
10 A MEMORIAL

11 REQUESTING THE DEPARTMENT OF HEALTH AND THE PUBLIC EDUCATION
12 DEPARTMENT TO RECOGNIZE THE URGENT NEED FOR SCHOOL-BASED HEALTH
13 CARE AND THE NEED FOR RESEARCH FOCUSED ON IMPLEMENTING SCHOOL-
14 BASED HEALTH CLINICS AS A VITAL COMPONENT OF PUBLIC SCHOOLS TO
15 ADDRESS BARRIERS TO MEDICAL AND BEHAVIORAL HEALTH CARE DURING
16 AND AFTER THE CORONAVIRUS DISEASE 2019 PANDEMIC.

9 NOW, THEREFORE, BE IT RESOLVED BY THE SENATE OF THE STATE
10 OF NEW MEXICO that the department of health and the public
11 education department be requested to jointly create a strategic
12 plan to:

13 A. consider potential funding mechanisms to support
14 school-based health clinics based on successful models with
15 partners that may include school districts, city government,
16 county government, state government, health care providers and
17 community partners;

18 B. provide a guide for each school district to use
19 to set standards for school-based health clinics in school
20 settings during and after the coronavirus disease 2019 pandemic
21 in New Mexico;

22 C. provide an analysis of the hub and spoke model
23 designed to improve health and education for New Mexico
24 students and families during and beyond the pandemic; and

State Government Commitment

New Mexico Primary Care Council is a community body established through [House Bill 67](#) in the 2021 New Mexico Legislature.

NEW MEXICO PRIMARY CARE COUNCIL

MISSION

Revolutionize primary care into InterProfessional, sustainable teams delivering high-quality, accessible, equitable health care across New Mexico through partnerships with patients, families, and communities.

VISION

By 2026, New Mexico will exemplify same-day access to high-quality, equitable primary care for all persons, families, and communities.

GOALS

Health Equity



Develop and drive investments in health equity to improve the health of New Mexicans.

Health Technology



Develop and drive health information technology improvements and investments that make high quality primary care seamless and easy for Primary Care Interprofessional Teams, patients, families, and communities.



Payment Strategies

Develop and make recommendations regarding sustainable payment models and strategies to achieve high quality and equitable primary care for all New Mexicans.



Workforce Sustainability

Create a sustainable workforce, financial model, and budget to support our mission and secure necessary state and federal funding.

Federal Government Commitment



United States Senate

WASHINGTON, DC 20510

April 13, 2023

March 22, 2022

Dear Governors:

The COVID-19 pandemic caused the Nation's children and youth to face unprecedented challenges and further exacerbated preexisting inequities. Childcare centers, schools, after-school programs, and recreational activities closed, disconnecting nearly 60 million children and youth from essential resources and supports.¹ Many families faced job loss, economic hardship, and food insecurity.

Our Nation's children have been particularly impacted by the COVID-19 pandemic, including significant impacts on their mental health. As of June 2021, approximately 140,000 children have lost a parent or grandparent caregiver to COVID-19.² Youth reports of psychological distress have doubled since the pandemic began, with 25 percent reporting depressive symptoms and 20 percent reporting anxiety symptoms.³ Trauma and stressor-related disorders, including acute stress disorder and adjustment disorder, are common among young children under five, as a result of the pandemic.⁴ Children and youth with intellectual or developmental disabilities and those with prior childhood trauma are at particular risk for pandemic-related mental health challenges,⁵ as are those who have faced previous discrimination in the health care system, including children and youth of color, immigrant children, children with disabilities, and those who are LGBTQ+.^{6 7}

The Biden-Harris Administration is committed to improving the health and well-being of children. This is why the U.S. Department of Health and Human Services (HHS) and the U.S. Department of Education (ED) have joined together to develop and align resources to ensure children have the physical and behavioral health services and supports that they need to build resilience and thrive.

The Honorable Tammy Baldwin
Chairwoman
Subcommittee on Labor-HHS-Education
Senate Appropriations Committee
United States Senate
Washington, D.C. 20510

The Honorable Shelley Moore Capito
Ranking Member
Subcommittee on Labor-HHS-Education
Senate Appropriations Committee
United States Senate
Washington, D.C. 20510

Dear Chairwoman Baldwin and Ranking Member Capito:

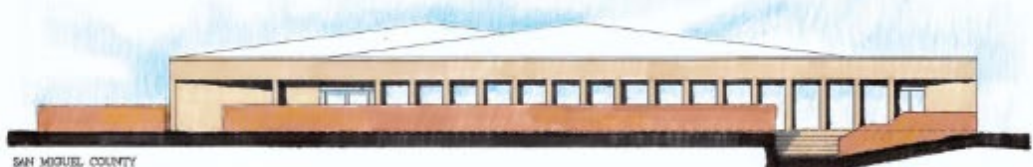
As your Subcommittee prepares to consider the Labor, Health and Human Services, Education, and Related Agencies FY 2024 Appropriations bill, we respectfully request that you include \$200 million in funding for school-based health centers (SBHCs), \$100 million for SBHCs within the Section 330 Health Centers Program and \$100 million for SBHCs that do not receive Section 330 Health Centers funding. Funding for the operation of SBHCs would help provide quality primary, preventive and mental health care to children and adolescents nationwide in an accessible, familiar, and convenient setting.

United in Purpose – Our YOUTH 100



Northeast Regional Crisis and Treatment Center

NORTHEAST REGIONAL CRISIS AND TREATMENT CENTER



SAN MIGUEL COUNTY

PROJECT FUNDING:

\$1,500,000	NM GENERAL SERVICES DIVISION
\$75,000	CAPITAL OUTLAY
\$80,000	GENERAL FUND
\$1,720,000	CAPITAL OUTLAY
\$1,500,000	FEDERAL DIRECT SPENDING
\$4,875,000	TOTAL FUNDING

SPECIAL THANKS TO:

GOVERNOR MICHELLE LUJAN GRISHAM

OUR LEGISLATORS ARE MAKING THIS PROJECT POSSIBLE:

FEDERAL:

- BEN RAY LUJAN, U.S. SENATOR**
- TERESA LEGER-FERNANDEZ, U.S. REPRESENTATIVE**
- MARTIN HEINRICH, U.S. SENATOR**

NEW MEXICO STATE:

- AMBROSE CASTELLANO, NM REPRESENTATIVE**
- PETE CAMPOS, N.M. SENATOR**
- LIZ STEFANICS, N.M. SENATOR**

SPECIAL THANKS TO THE MORA/SAN MIGUEL/GUADALUPE COUNTY COLLABORATIVE AND 100% COMMUNITY:

- HAROLD GARCIA, CHAIRMAN, COUNTY COMMISSION, DISTRICT 1**
- JANICE VARELA, VICE-CHAIR, COUNTY COMMISSION, DISTRICT 2**
- MAX TRUJILLO, COUNTY COMMISSION, DISTRICT 3**
- MARTIN SENA, COUNTY COMMISSION, DISTRICT 4**
- KENNY MEDINA, COUNTY COMMISSION, DISTRICT 5**
- JOY ANSLEY, COUNTY MANAGER**
- CHRIS LOPEZ, COUNTY SHERIFF**
- JESUS ROMERO, DEPUTY COUNTY MANAGER**
- MELINDA GONZALES, FORMER INTERIM COUNTY MANAGER**