

New Mexico Bureau of Geology and Mineral Resources

Dr. Nelia Dunbar

Director, State Geologist

Ron Broadhead

Senior Petroleum Geologist



A non-regulatory governmental agency (the state's geological survey) that conducts scientific investigations leading to responsible economic development of the state's mineral, water, and energy resources.

A Division of New Mexico Tech



New Mexico Bureau of Geology and Mineral Resources

A non-regulatory governmental agency (the state's geological survey) that conducts scientific investigations leading to responsible economic development of the state's mineral, water, and energy resources.

Founded in 1928 through state legislation.

Currently has **approximately 56 FTE staff** with about 27 research scientists, 30 professionals and permanent support staff, 11 emeritus, around 12 graduate students and 28 part-time undergrads.

Two office locations

Socorro (54 staff), Albuquerque (4)

Budget

80% is hard money funding

20% is soft money funding

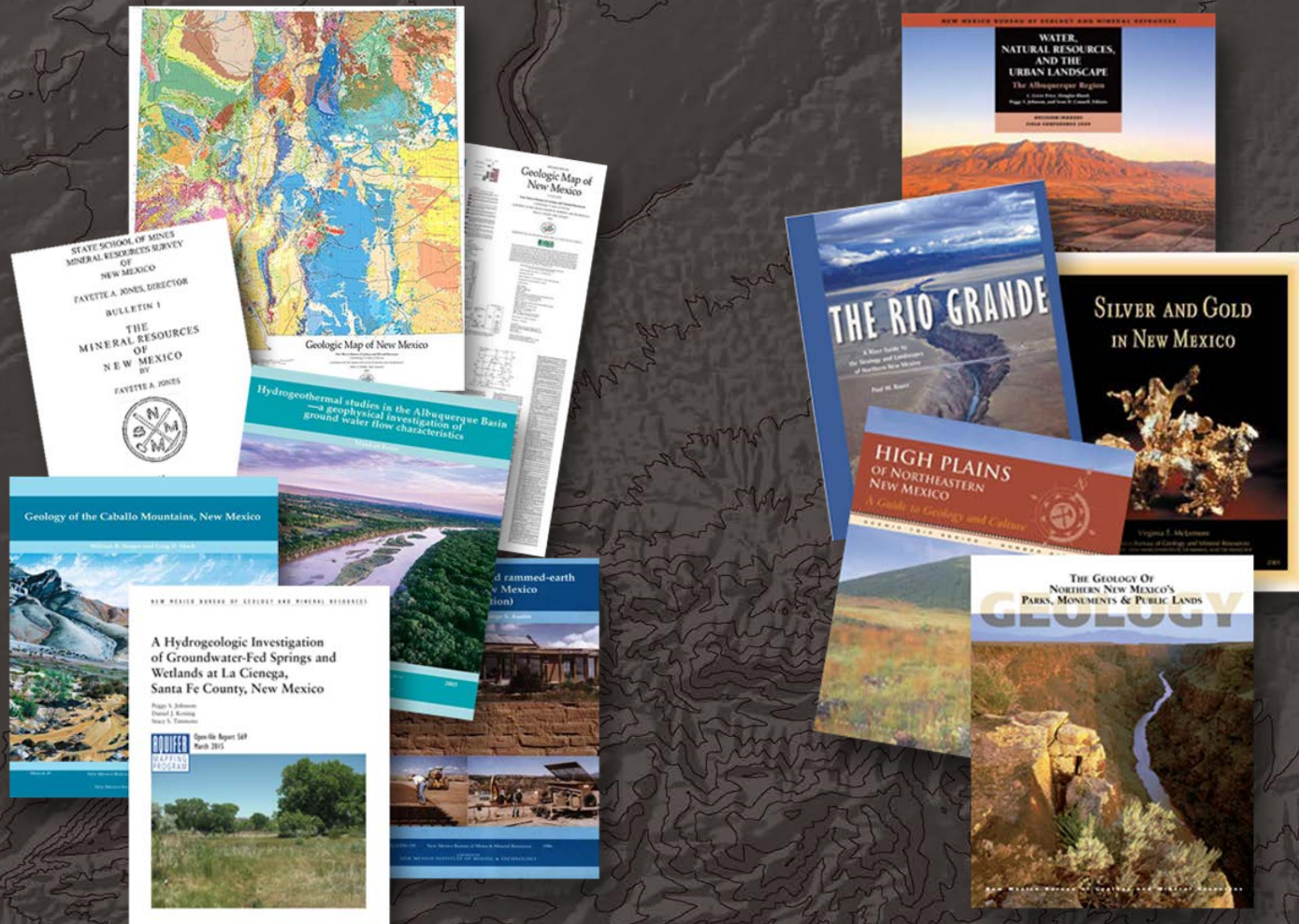


The Bureau's Mission

Conduct research and interact with industry and state or federal agencies to facilitate responsible development of the state's geological energy and mineral resources.

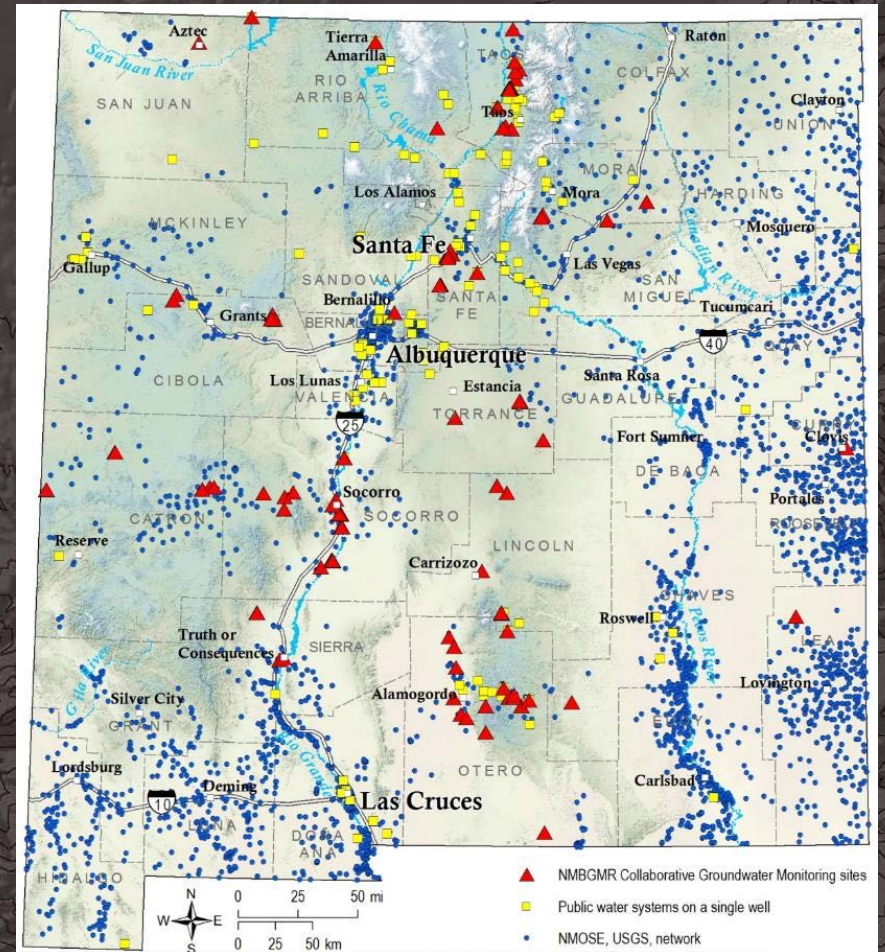
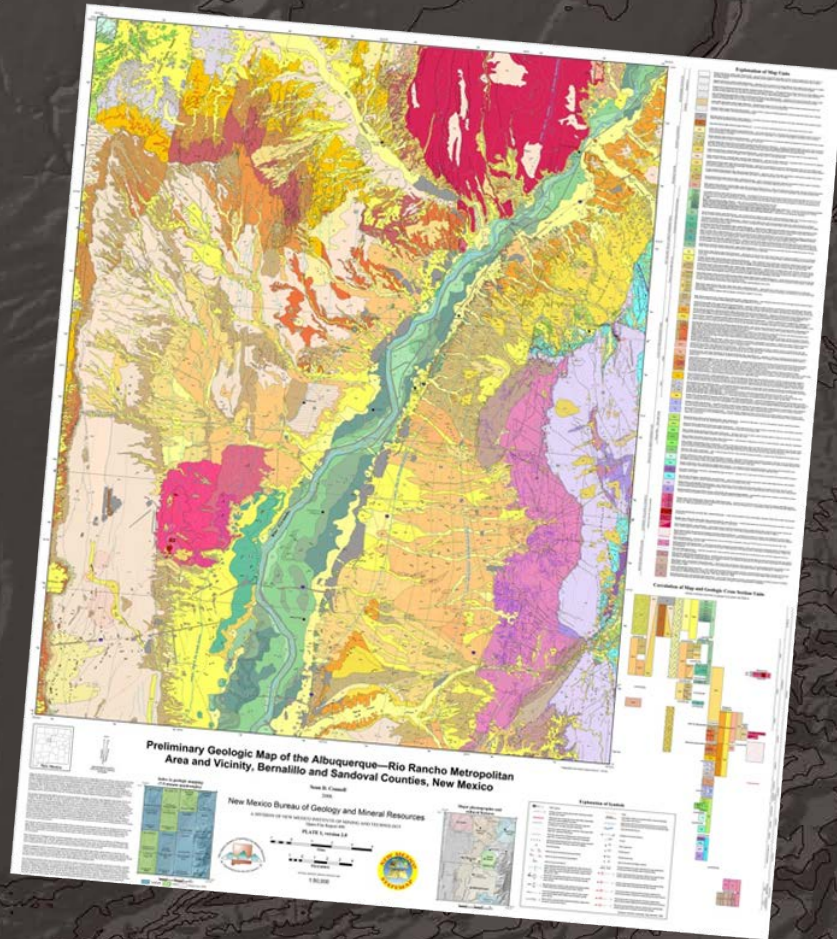


Distribute accurate information to scientists, decision makers, and the New Mexico public regarding the state's geologic infrastructure, mineral and energy resources, and geohydrology (including water quantity and quality).



Create accurate, up-to-date maps

- NM STATEMAP Program
- Aquifer Mapping Program



The Bureau's Mission

Provide timely information on potential geologic hazards, including earthquakes, volcanic events, soils-and subsidence-related problems, and flooding.



Act as a repository for cores, well cuttings and a wide variety of geological data. Provide convenient physical and internet access for New Mexicans to such resources.



Provide public education and outreach through college teaching and advising, a Mineral Museum, and teacher- and student-training programs.

