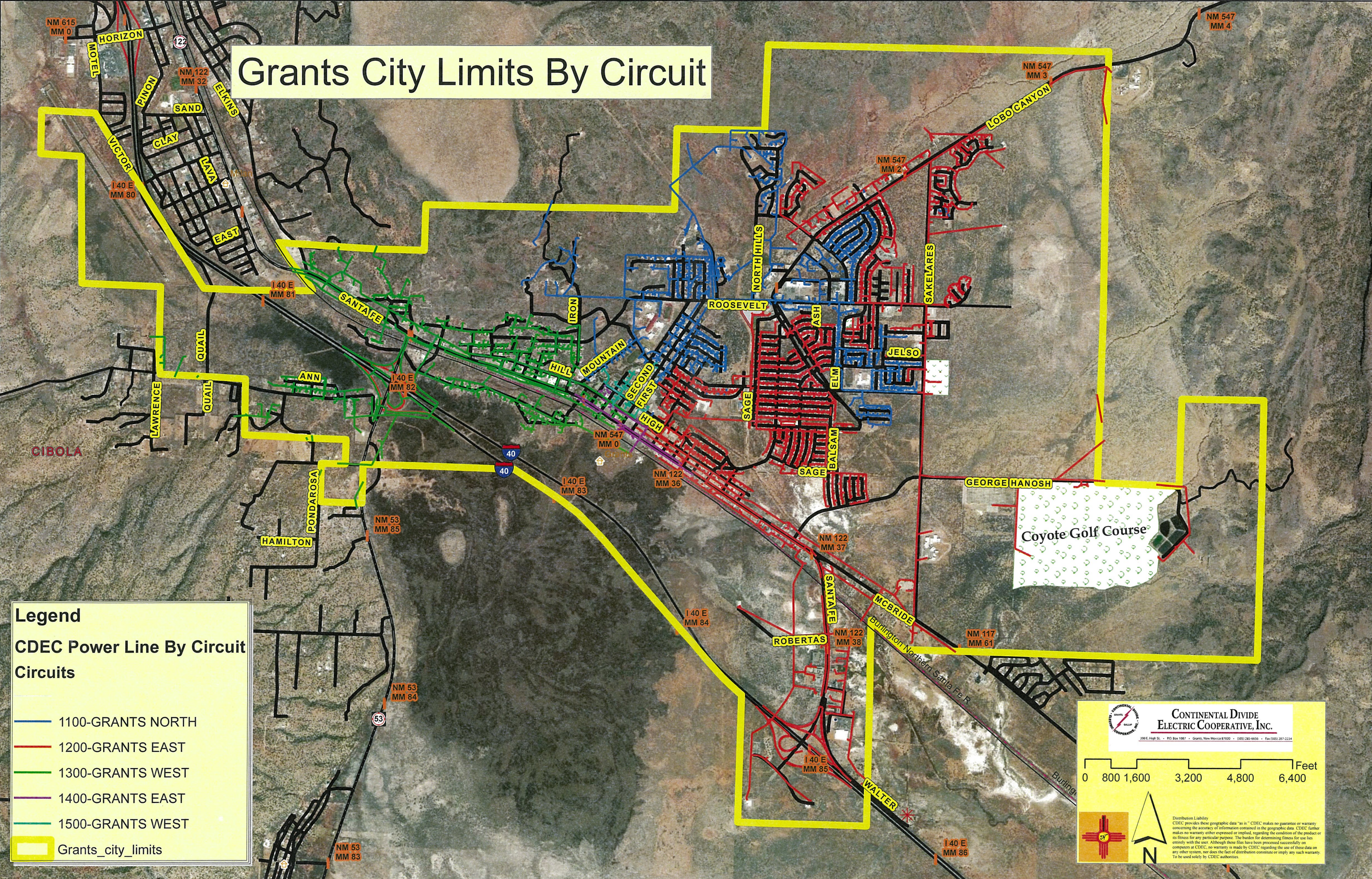


Grants City Limits By Circuit



Legend

CDEC Power Line By Circuit

Circuits

- 1100-GRANTS NORTH
- 1200-GRANTS EAST
- 1300-GRANTS WEST
- 1400-GRANTS EAST
- 1500-GRANTS WEST
- Grants_city_limits

**CONTINENTAL DIVIDE
ELECTRIC COOPERATIVE, INC.**

200 E. High St. • P.O. Box 1987 • Grants, New Mexico 87020 • (505) 281-6656 • Fax (505) 287-2234

Distribution Liability
CDEC provides these geographic data "as is." CDEC makes no guarantee or warranty concerning the accuracy of information contained in the geographic data. CDEC further makes no warranty, either expressed or implied, regarding the condition of the product or its fitness for any particular purpose. The burden for determining fitness for use lies entirely with the user. Although these files have been processed successfully on computers at CDEC, no warranty is made by CDEC regarding the use of these data on any other system, nor does the fact of distribution constitute or imply any such warranty to be used solely by CDEC authorities.