

Greater Gallup Economic Development Corporation



Gallup, New Mexico: NM's newest Inland Port

November 13, 2023 | Transportation Infrastructure Revenue Subcommittee

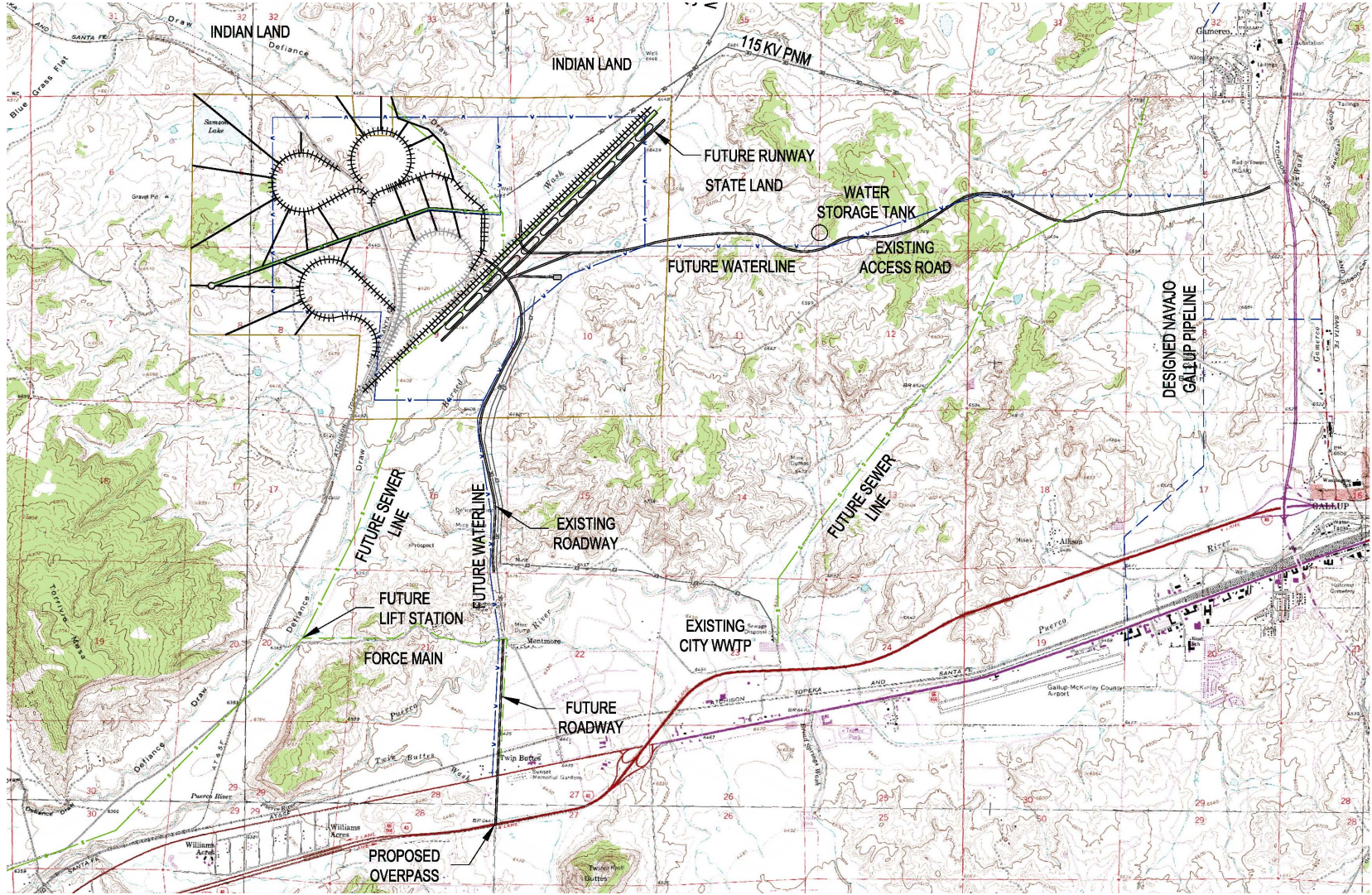
Greater Gallup Economic Development Corporation

- **501(c)3 non-profit organization, under contract by:**
 - City of Gallup
 - McKinley County
- **7-member Board of Directors**
 - All Private Sector
 - 250+ yrs. cumulative business experience
- **Professional staffing**
 - Only EDO in NM w/ 2 Certified Economic Developers (CEcD)

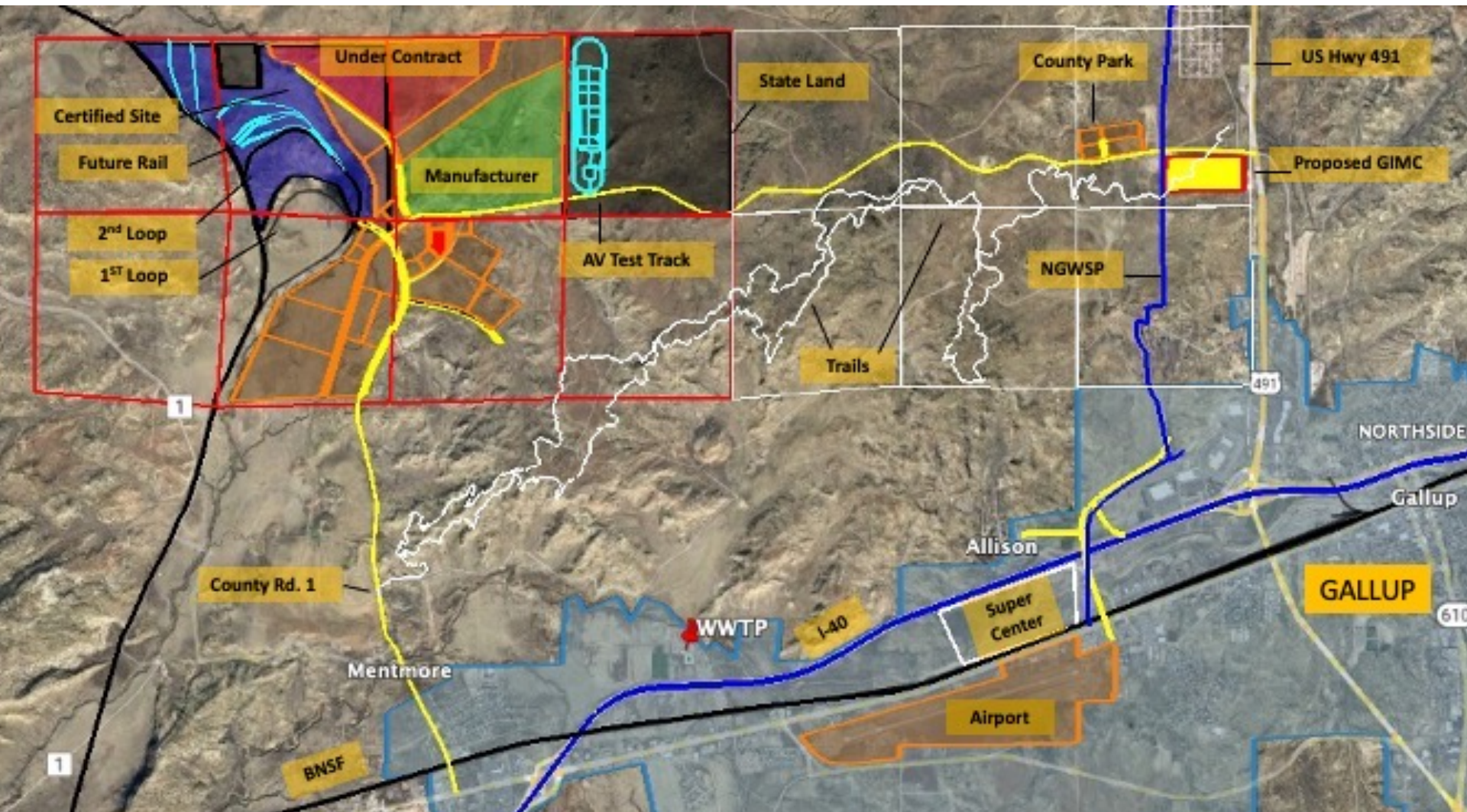
Mission Statement

Drive economic growth through building on local assets and strategic partnering to target attraction and recruitment of business and industrial employers that provide economic base jobs in the Gallup-McKinley County area, and to support & promote a business friendly environment.

Original Vision



Current Vision





G*G*E*D*C

Regional Transportation Corridors Northwest New Mexico

G*G*E*D*C

What We Already Have

- **BNSF Railway**
- **Interstate I-40**
- **US Hwy 491**
- **Gallup Municipal Airport – Passenger Service**
- **Gallup Land Partners**
- **Gallup Energy Logistics Park**
- **Carbon Coal Road**
- **BNSF Site Certification**

Energy Logistics Park



Gallup Energy Logistics Park

Gallup, New Mexico



Rail Master Plan



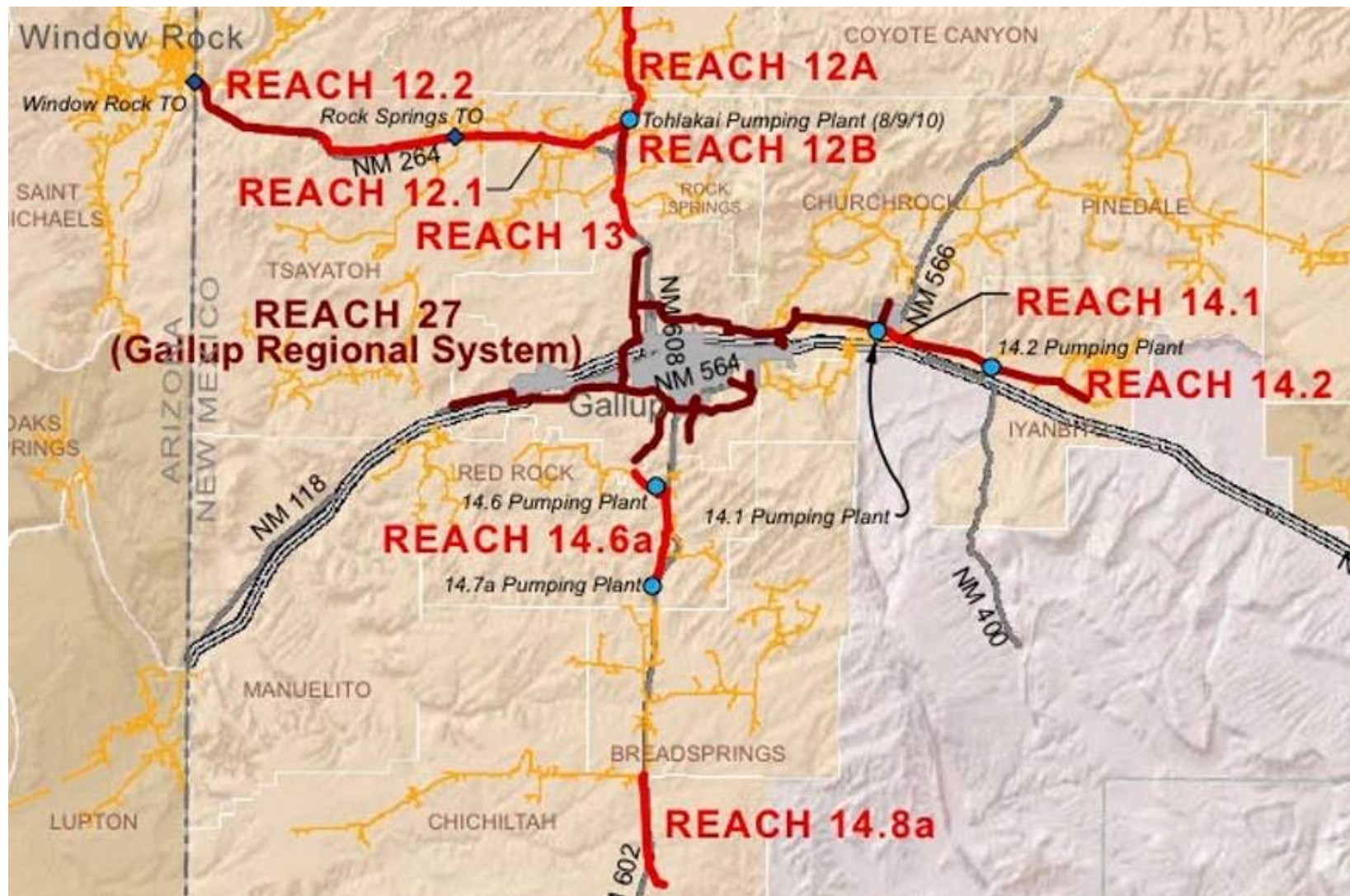
Carbon Coal Road



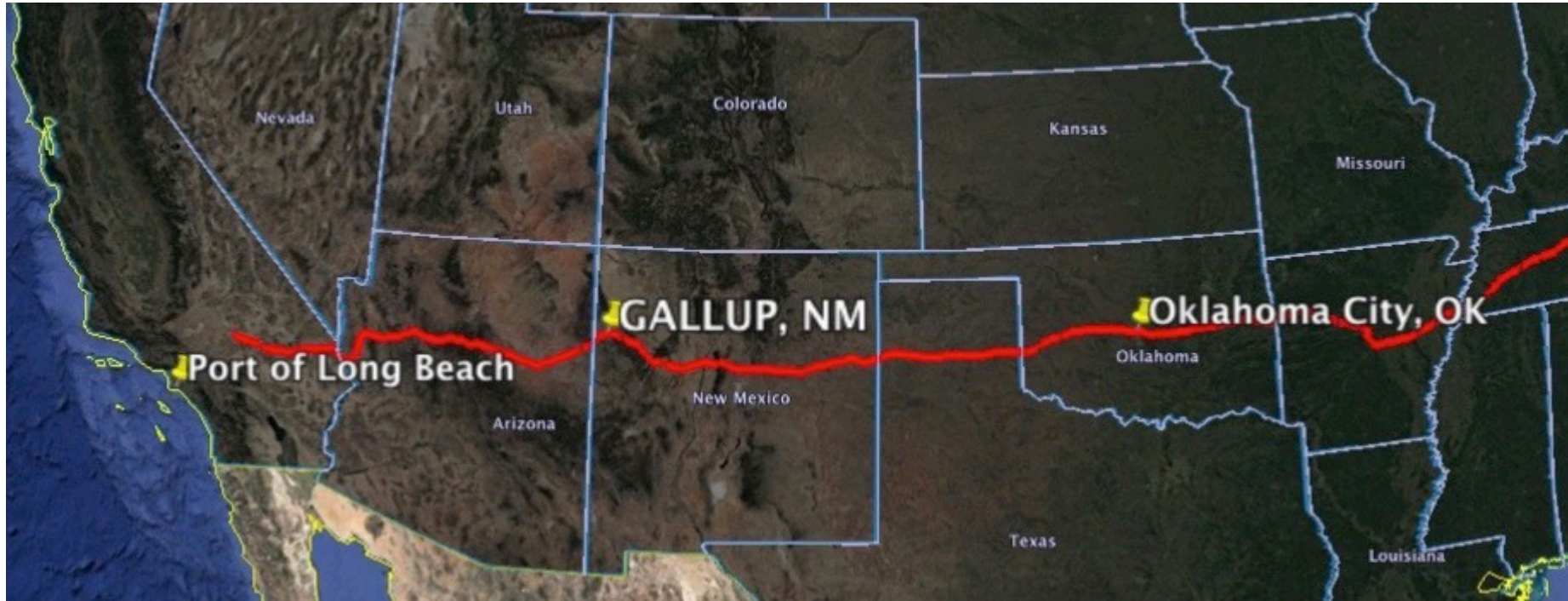
Carbon Coal Road

- **5 miles in length**
- **Designed for 1,000 trucks per day**
- **4 lanes, 8 ft wide shoulders, turning lanes**
- **McKinley County owned**
- **ROW dedicated by Gallup Land Partners**
- **Improvements to US Hwy 491 Intersection**

Navajo Gallup Water Supply Project



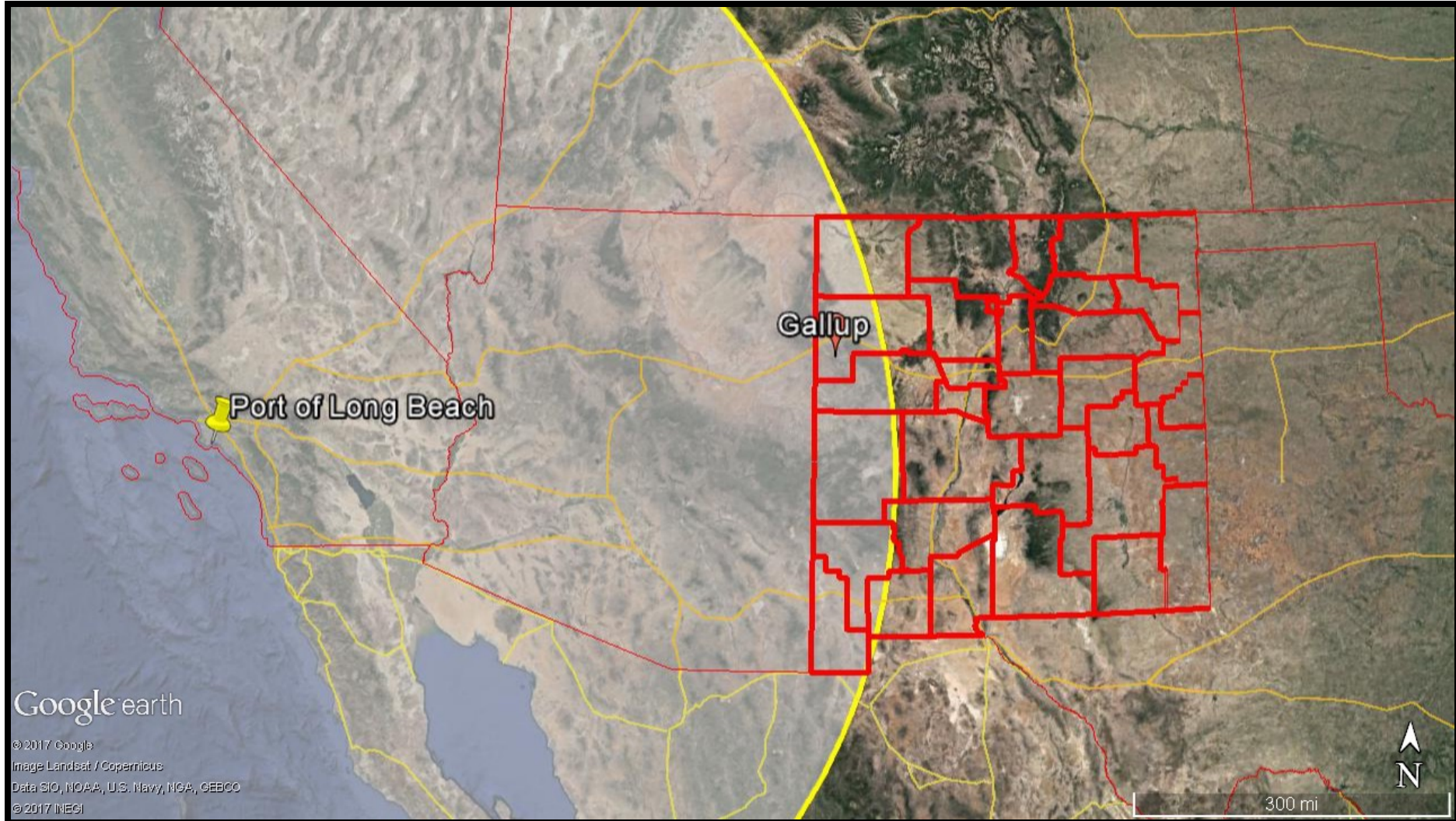
Go West or East from Gallup



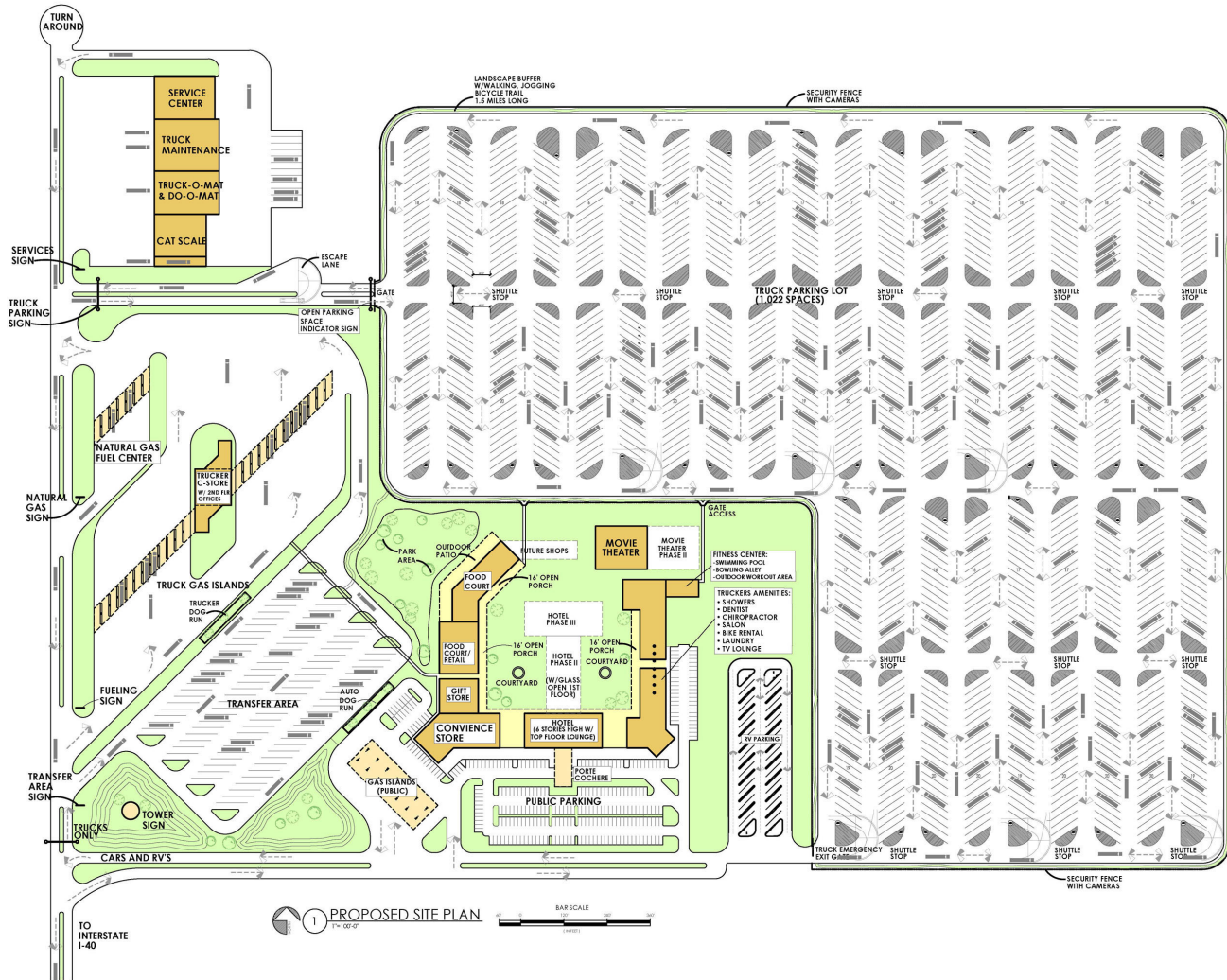
GLP – LBC | 666 miles | 9h 40min

GLP – OKC | 670 miles | 9h 47min

11-Hour Drive Window



Gallup Super Center

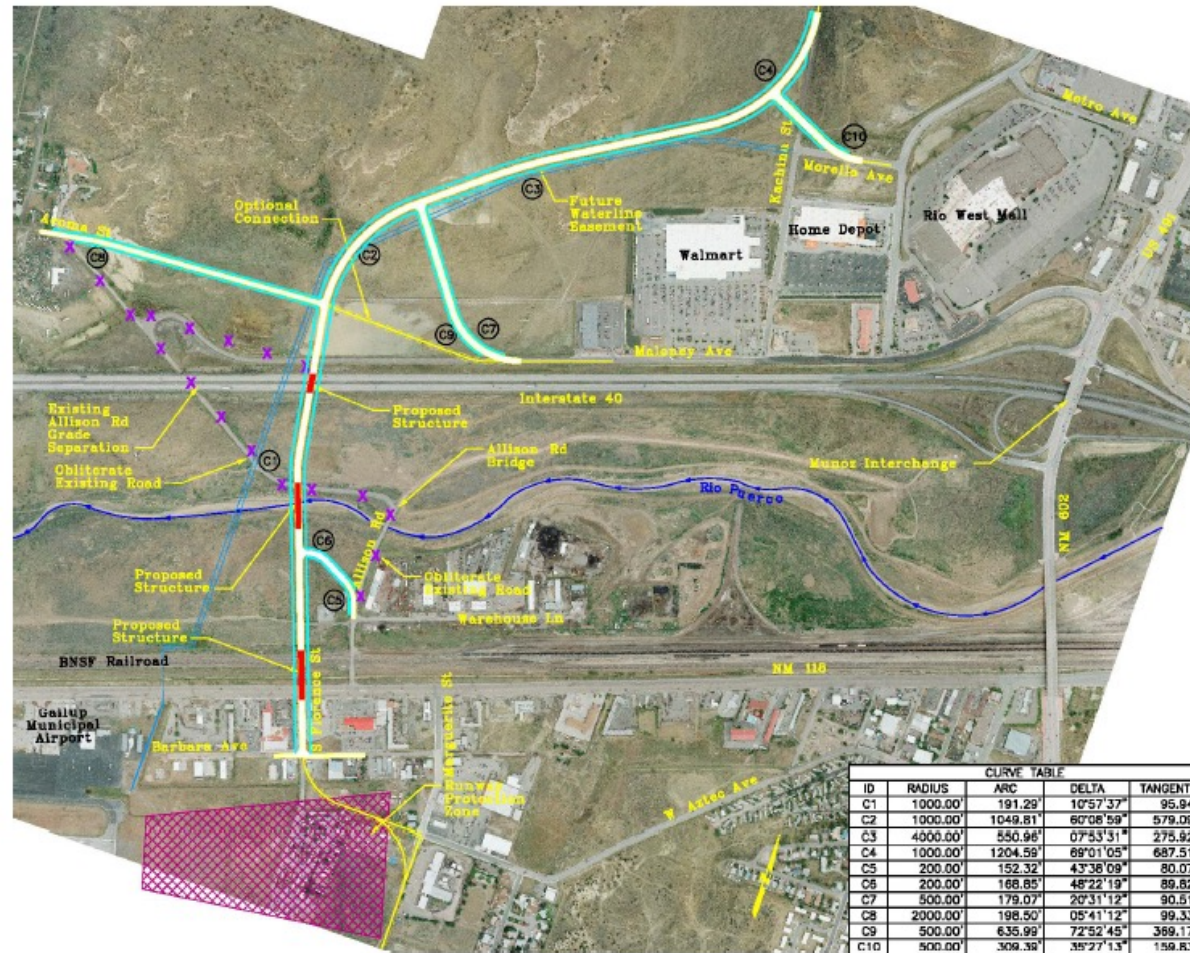


GALLUP SUPER CENTER OVERALL SITE PLAN

The Future

- **AV Test Track**
- **Hydrogen Fueling Hub**
- **Inland Port**
- **Manufacturing**
- **McKinley County Business Park**
- **Super Center**
- ***Truck to Rail***
- ***Cold Storage***
 - ***Downstream of food production***

Allison Interchange



Center Alignment Summary

Advantages:

- A reasonable connection can be made to Warehouse Lane.
- The alignment is perpendicular to NM 118, the BNSF Railroad tracks, and the Rio Puerco to minimize structure costs.
- Most of the alignment is constructed off of the existing alignment. The Allison Road underpass can be utilized while the I-40 overpass is constructed.
- Acoma Drive can be connected to Allison Road using the existing I-40 underpass which would require less construction than a road on the north side of I-40.
- Avoids impacting the mesas north of I-40.

Disadvantages:

- Impacts the mobile home park on Florence Street.
- There will be one business relocated on Marguerite Street to extend W. Aztec Avenue.
- There will be one business relocated on the southwest corner of Florence St. and Barbara Ave. because access cannot be provided.
- Access impacts to the America's Best Value Inn Restaurant and Blake's Restaurant at NM 118. The alignment is shorter than the West Alignment but longer than the East Alignment so it will have a medium construction cost and amount of right-of-way takes.

Gallup Municipal Airport



Foreign Trade Zone – Subzone Designation



U.S. Customs and
Border Protection



Mobility Investment District





The Economic Importance of Transportation

High density transport infrastructure and highly connected networks are commonly associated with high levels of development.

- When transport systems are *efficient*, they provide economic and social opportunities and benefits that result in positive multipliers effects such as better accessibility to markets, employment and additional investments.
- When transport systems are *deficient* in terms of capacity or reliability, they can have an economic cost such as reduced or missed opportunities and lower quality of life.

Current Vision



Questions?

Patty Lundstrom, CEcD

Executive Director, GGEDC

(505) 722 – 2980

www.GallupEDC.com