


---



---



---



---



---

### History

- The South Central Colfax County Special Hospital District was formed in 1986 with the help of Presbyterian Healthcare Services of Albuquerque. There was a critical need to expand health care services in this region of Colfax County.
- Springer was served by two physicians and a small general acute hospital that also had 10 nursing home beds.
- Angel Fire had one physician that visited from Raton on a monthly basis. Patients were traveling in excess of 60 miles for a simple doctor's visit.
- Cimarron did not have a medical provider.

---



---



---



---



---

### Formation

Special Hospital District includes the following school districts:

- Maxwell
- Springer
- Cimarron

2,800 square miles  
Population: 3,200

---



---



---



---



---

## Locations

- Since its inception, the hospital district has been able to expand health care services to all the communities within its service area through:
  - Colfax General Long Term Care
  - Colfax General Laboratory
  - Moreno Valley Healthcare Clinic
  - Cimarron Healthcare Clinic
- The hospital district is now a self-managed organization with no management affiliation.
- Patient satisfaction is 97%.
- Mill Levy was last approved in 2015 with a 92% positive vote.

---

---

---

---

---

---

## Governing Board

- The board is comprised of 5 members elected by popular vote and representative of each school district.
- Members of the board are all users of the services provided by the hospital district.
- Our chairperson has been on the board for more than 26 years.

---

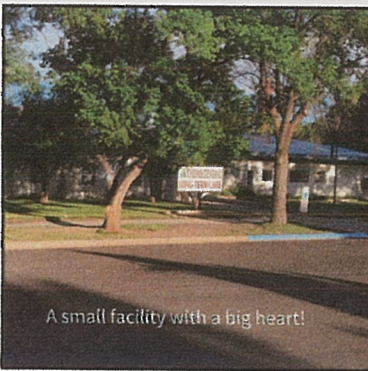
---

---

---

---

---



A small facility with a big heart!

## Colfax General Long Term Care

- 5 star facility.
- 100% deficiency-free for 5 years.
- 33-bed nursing facility.
- Provides long-term nursing care 24/7.
- Family-oriented.

---

---

---

---

---

---



### Colfax General Laboratory

- CLIA-approved laboratory.
- Provides laboratory services to both clinics.
- Provides house calls to patients that are unable to come to the clinics or lab.
- Provide on-site lab collections at senior centers in: Cimarron, Angel Fire, Clayton, and Raton.

---

---

---

---

---

---



### Moreno Valley Health Care Clinic

- 1 board-certified Doctor of Osteopathy
- 2 certified Family Nurse Practitioners
- 3 certified medical assistants
- 2 billing clerks
- Office manager oversees all the business operations for both clinics.

---

---

---

---

---

---



### Cimarron Healthcare Clinic

- 1 Physician Assistant
- 1 Internal Medicine Physician
- 1 certified medical assistant who performs billing functions

---

---

---

---

---

---

## Clinic Services

- Primary care
- Free blood pressure screenings
- Breast and cervical screening
- Osteoporosis screening
- Diabetes screening
- Flu shots
- Annual wellness exams
- Safe sex information
- Immunizations
- EKG testing
- Community education
- Senior programs
- Health fairs

---

---

---

---

---

---

## Clinic Utilization

- A majority of residents in the hospital district receive care through these two clinics.
- When patients require specialty care not currently available in our clinics, providers ensure patients receive referrals to specialists.
- We work with health fairs in both Cimarron and Angel Fire and work closely with both EMS agencies.
- Cimarron clinic serves a population with a median age 13 years older than the state median.
- Over half of patients served are 45 or older.
- 6% of the Cimarron community are veterans.



---

---

---

---

---

---

## Accomplishments

### Colfax General Long Term Care

- Department of Health Five Star Facility since 2012
- 2017 New Mexico HealthInsight Quality award
- 2017 certified physical restraint free facility



Both clinics have received the New Mexico HealthInsight Shining Star award from 2011 to 2014.

---

---

---

---

---

---

## Cimarron Healthcare Clinic Issues

- Water damage from flooding and leaks.
- Crowded, shared work areas.
- Floor falling in.
- Walls detaching from ceiling and floor.



---

---

---

---

---

---

## Cimarron Community Ambulance



---

---

---

---

---

---

## Cimarron Community Ambulance

- All volunteer service.
- Available 24/7.
- Three PRC-accredited ambulances.
- Advanced Life Support available on 90% of calls.
- 1,100 square mile response area.
- Over 160 runs in 2017.
- Annual run volume increase of 9%.



---

---

---

---

---

---

### Cimarron Community Ambulance

- Founded in 1979 by a small group of Cimarron citizens who recognized the need for emergency medical services in the community.
- Volunteers funded and built the first ambulance barn and funded the additional bays and classroom a few years later.



---

---

---

---

---

---

### Cimarron Volunteer Ambulance Issues

- Water damage from leaks and flooding
  - Gas leaks
  - Wind damage
  - Limited storage space
- These issues have affected:
- Doors
  - Ceiling
  - Utility costs

---

---

---

---

---

---



---

---

---

---

---

---



---

---

---

---

---



---

---

---

---

---



---

---

---

---

---

## Cimarron Healthcare Clinic and Ambulance Facility

---

---

---

---

---

### Cimarron Healthcare Clinic & Ambulance Facility

- The Hospital District is seeking funding in the amount of \$1,350,000 to construct and furnish a new combination primary care clinic and ambulance facility.
- Funding will replace the clinic and ambulance facilities to ensure continued primary health care and emergency services in Cimarron, New Mexico.
- Planning and design was funded by state capital outlay funds
- Land has been privately donated to the Colfax Healthcare Foundation.
- All legal requirements have been fulfilled and construction can begin immediately.

---

---

---

---

---

### Finance & Management

- The Hospital District relies on a 4.25% mill levy assessment and revenue from billable services.
- Limited funding via the Rural Primary Health Care Act (RPHCA) augments the clinics' operating budgets.
- The ambulance service derives revenue from billable services and relies on donations and fundraising to maintain its equipment.
- Operating as a branch of the Cimarron village government, the ambulance service has its own board, providing oversight and direction.
- Neither entity generates sufficient revenue to repay a construction loan, nor are there discretionary funds available.

---

---

---

---

---



## Funding Sources Contacted To Date

- New Mexico Capital Outlay
- New Mexico Finance Authority
- United States Department of Agriculture
- NM DFA
- Mabee Foundation
- Fidelity Foundation
- Ware Foundation
- Murdock Trust
- Foundation Center
- Rockefeller Foundation

---

---

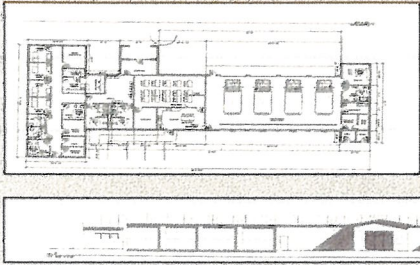
---

---

---

---

## Combined Facility



**Clinic**

- 4 exam rooms
- 2 offices
- Larger storage room
- Larger lab area

**Shared space**

- Shared meeting/classroom
- Shared kitchen/break room

**Ambulance**

- 4 ambulance bays with larger doors
- Laundry room
- Larger office with document storage
- Larger storage area
- Temperature-controlled medication storage

---

---

---

---

---

---

## Facility Development Plans

- Expanded office and exam room space will allow for:
    - Traveling specialists:
      - Endocrinology
      - OB-GYN
      - Behavioral health
    - Increased patient retention through expanded services
    - Better employee retention through expanded workspace
    - Ability to serve increasing patient volume as the community population ages
  - Expanded ambulance bay allows for continued growth of volunteer service
  - Classroom and meeting space for community outreach events
- Our vision is to develop a facility that reflects the award-winning care provided within our community.*

---

---

---

---

---

---

## Colfax Healthcare Foundation

S91(C)3- INCORPORATED OCTOBER 2015

---

---

---

---

---

---

## Colfax Healthcare Foundation

Colfax Healthcare Foundation's primary purpose is to promote public health in rural Colfax County, New Mexico, and to raise funds and awareness to further the improvement of healthcare of public hospital facilities operated by the South Central Colfax County Special Hospital District, through providing the best medical equipment, programs, and facilities to better serve the communities of Springer, Cimarron, Maxwell, Eagle Nest, and Angel Fire, New Mexico.

---

---

---

---

---

---

## Land Donation

- Donated in 2015
- Approximately 5 acres
- Centrally located in Cimarron
- Appraised at \$88,300



---

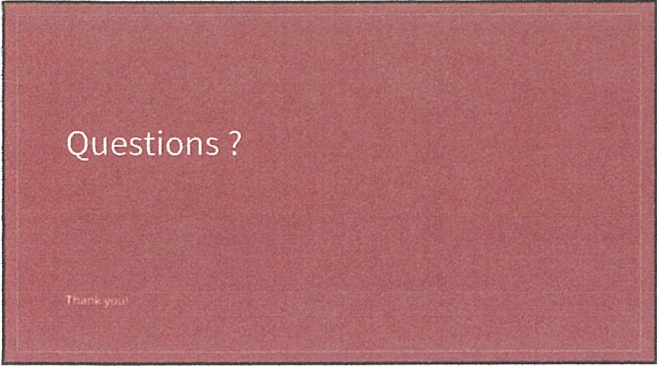
---

---

---

---

---



---

---

---

---

---

---

---

---

