

Transportation Challenges Facing County Governments

Doña Ana County

Robert L. Armijo

Interim ACM of Operations

(575) 525-6178

robertar@donaanacounty.org

Rene Molina

Interim Dir Eng-Road Dept

(575) 525-6170

renem@donaanacounty.org

DAC

Doña Ana County

- ▶ Population - 110,000
- ▶ Area - 3814 sq mi
- ▶ Density - 29 people/sq mi
- ▶ Budget - \$150 million

City of Las Cruces

110,000
76.6 sq mi
1436 people/sq mi
\$300 million

DAC

Doña Ana County Roads

- ▶ 1328 miles maintained
- ▶ 563 miles paved
- ▶ 765 miles unpaved

City of Las Cruces Streets

- ▶ 485 miles maintained
- ▶ 2-3 miles unpaved

DAC

Doña Ana County Property Ownership

- ▶ Federal - 75%
- ▶ State - 9%
- ▶ Private - 12%
- ▶ Other - 4%

DAC

Planning Organizations

- ▶ Mesilla Valley MPO
- ▶ El Paso MPO
- ▶ South Central RPO

Biggest Challenge?

\$

FY 2005-2018 Transportation Projects

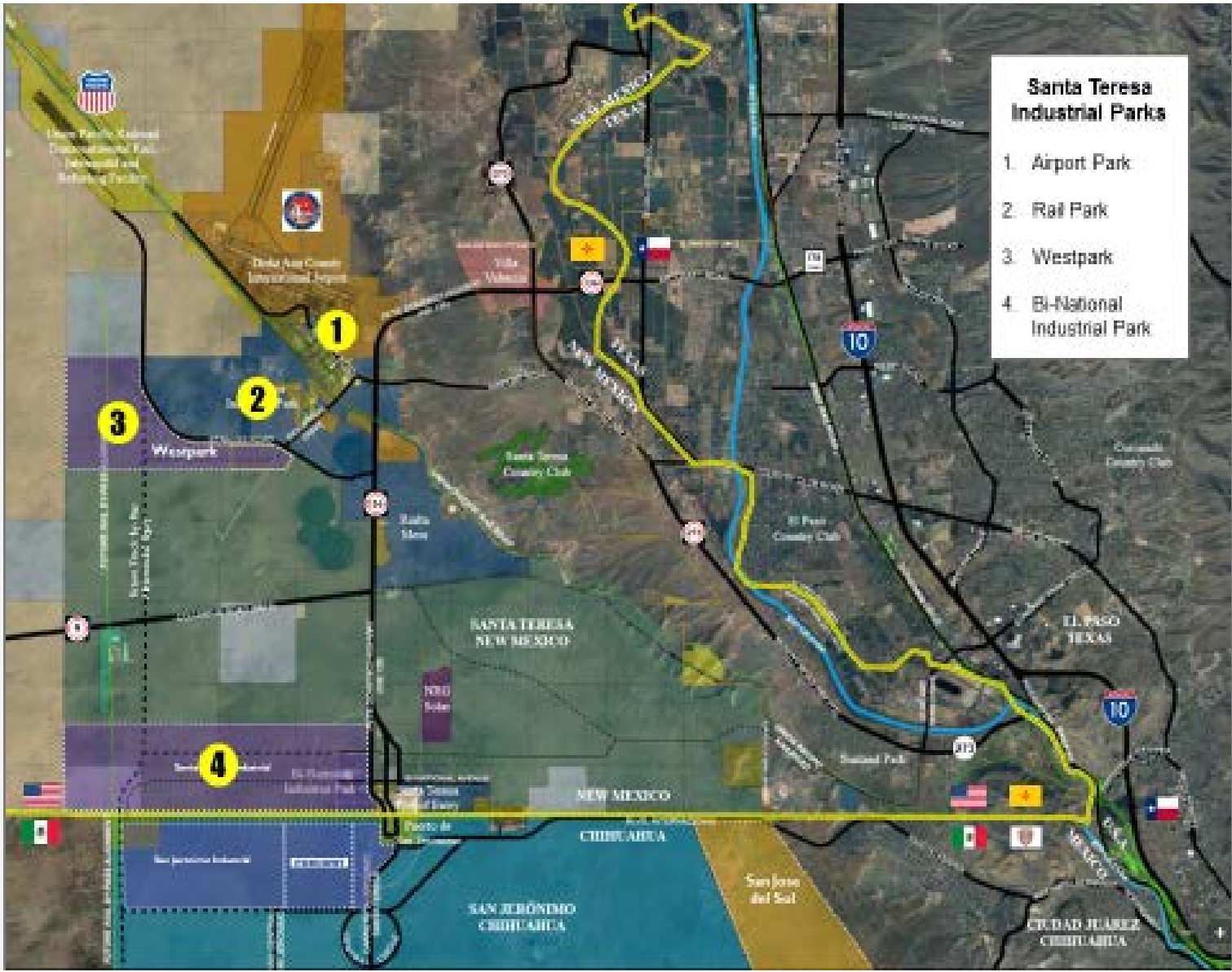
Funding	# Projects	Valuation
Colonias Infrastructure	14	\$2,506,000
Federal	3	\$5,668,000
LGRF	63	\$8,598,000
Capital Outlay	95	\$19,735,000
CDBG	1	\$300,000
<i>Totals</i>	<i>176</i>	<i>\$36,807,000</i>

DAC-Colonias

37 Federally Recognized Colonias

...criteria including the lack of potable water supply, lack of adequate sewage systems, and lack of decent, safe and sanitary housing.

- ▶ Unpaved Maintained Roads-765 Miles
- ▶ Unpaved Un-maintained Roads-240 Miles



- ### Santa Teresa Industrial Parks
- 1. Airport Park
 - 2. Rail Park
 - 3. Westpark
 - 4. Bi-National Industrial Park

New Mexico

Even though NM's exports to Mexico are lower than the other border states, NM's export **growth** to Mexico is far outpacing our neighbors.

Since 2007, Texan exports to Mexico have increased 65%, California 46%, and Arizona 75%.

NM has seen our exports increase almost 350%.



DAC-Border

Santa Teresa Border Area Needs Assessment and Strategic Plan

- ▶ TIGER Grant to NMDOT
- ▶ 78 number of proposed projects
- ▶ Total Cost - \$754 million

DAC-Border

Santa Teresa Border Area Needs Assessment and Strategic Plan

- ▶ NMDOT-\$209 million
- ▶ NM Border Authority-\$475 million
- ▶ DAC-\$43 million
- ▶ Sunland Park-\$12 million
- ▶ Other-\$14 million

DAC-Border

Overweight Zone

- ▶ 12 Mile Radius from Santa Teresa POE
- ▶ Increased Weight of Trucks to 95,000 lbs
- ▶ Increased ESALs-25%
- ▶ Now Covers Jetport and UPRR

DAC-Border

Airport Road

- ▶ Design Phase
- ▶ Construction-Jan/Feb 2018
- ▶ Concrete
- ▶ Estimate-\$7 million

DAC-Border

Industrial Ave Grade Separation

- ▶ Unfunded
- ▶ Estimate- \$8,000,000

DAC-Border

High Mesa Road

- ▶ Link Santa Teresa to Las Cruces
- ▶ Estimate- \$73 million

DAC-Border

Other Important Projects

- ▶ Extension of Columbus Highway
- ▶ Rail
- ▶ Etcetera

Thank You!

Questions?