

# Higher Education Institutions Return to School Plans for the 2020-2021 School Year

Garnett S. Stokes, President  
Legislative Education Study Committee  
Tuesday, August 25, 2020

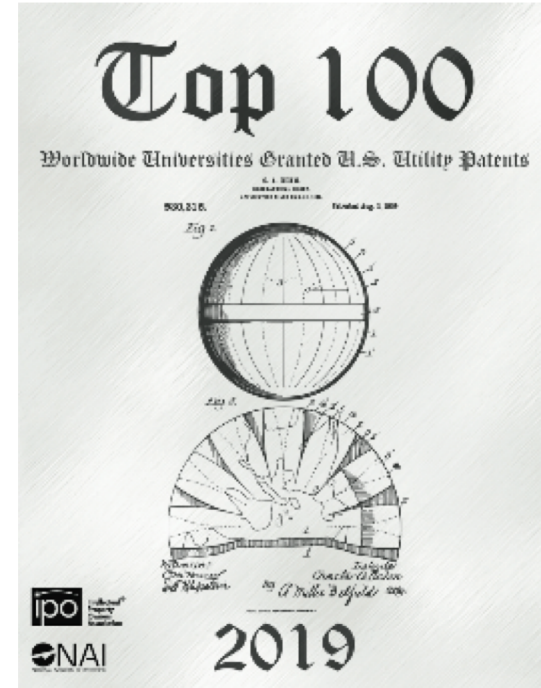


# Information to Share Today

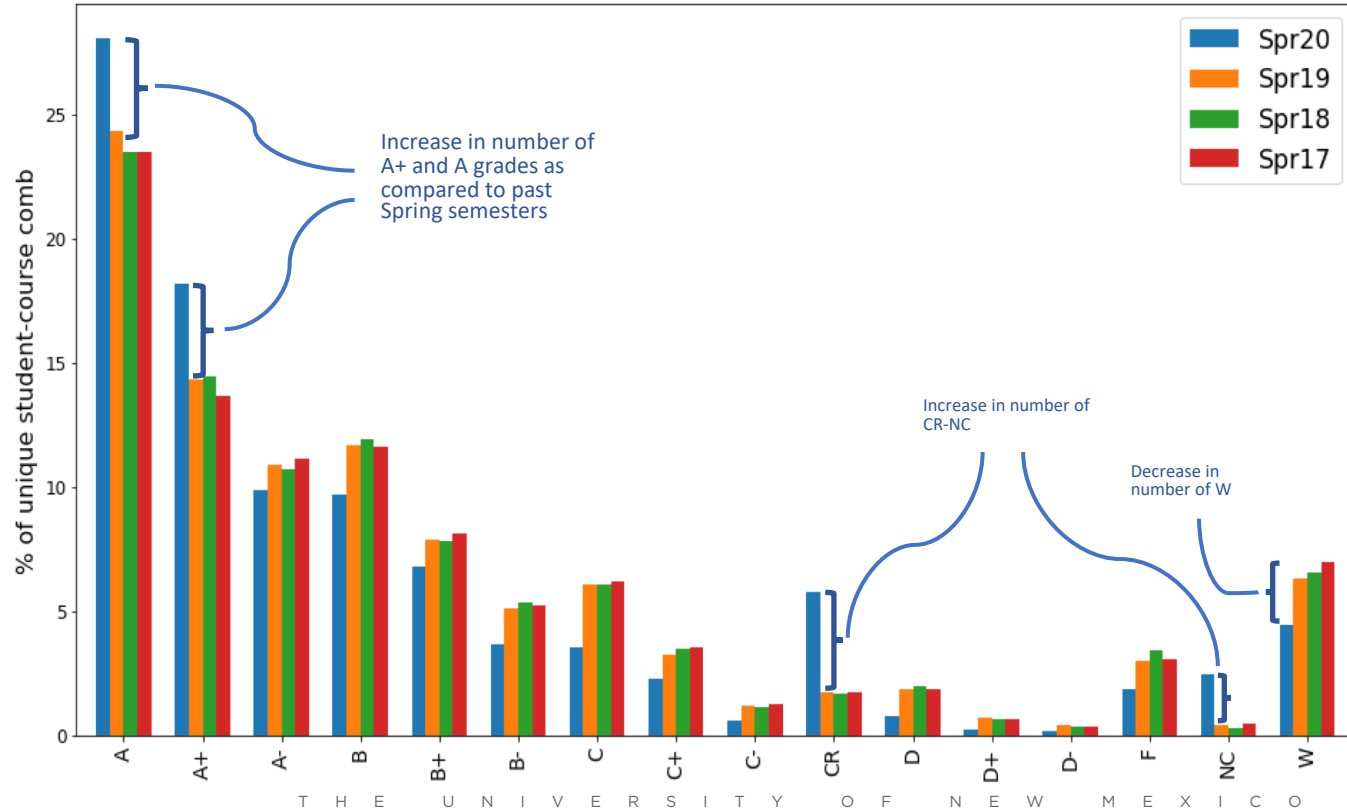
- **Recent outcomes**
- **Reopening status**
- **A look at our curriculum**
- **K-12 impact**

# UNM AMONG TOP 100 IN THE WORLD IN PATENTS

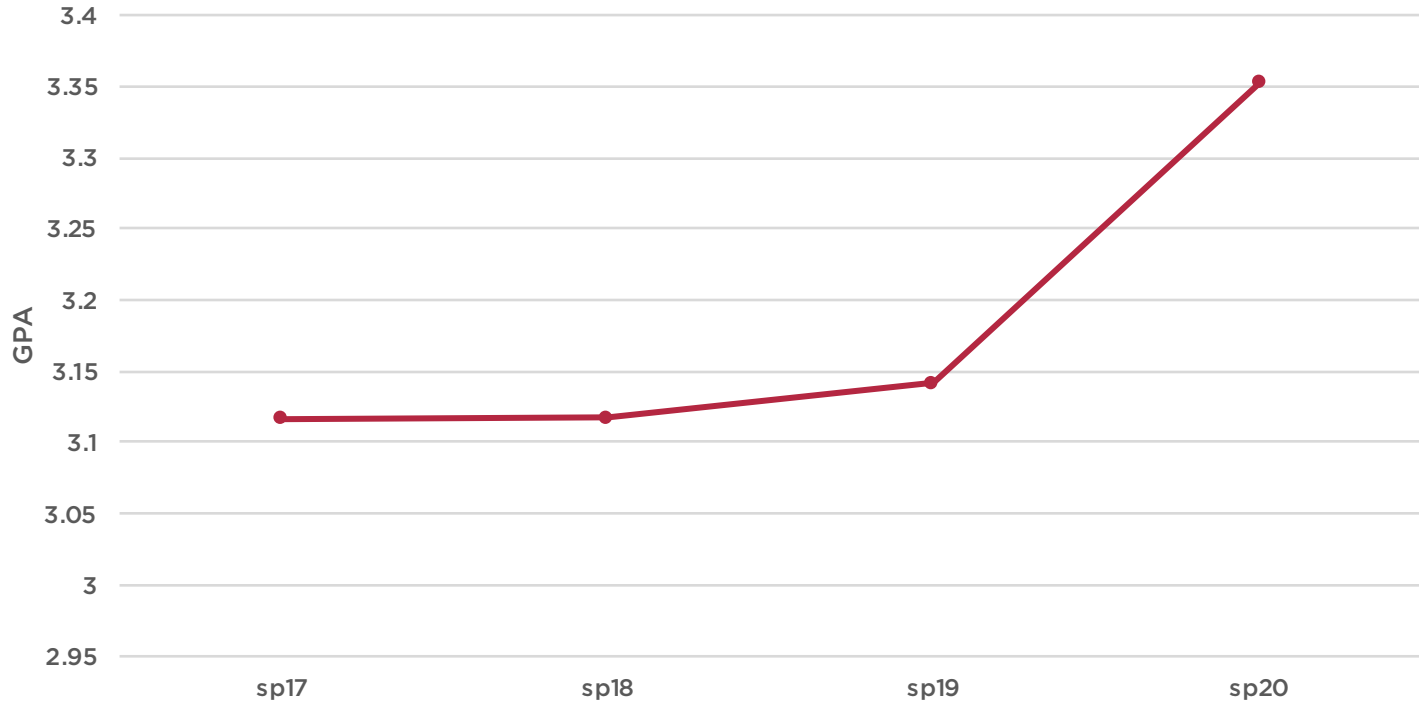
- UNM ranks among the Top 100 Worldwide Universities Granted U.S. Utility Patents
- The report uses data from the U.S. Patent and Trademark Office to highlight the important role patents play in university research and innovation



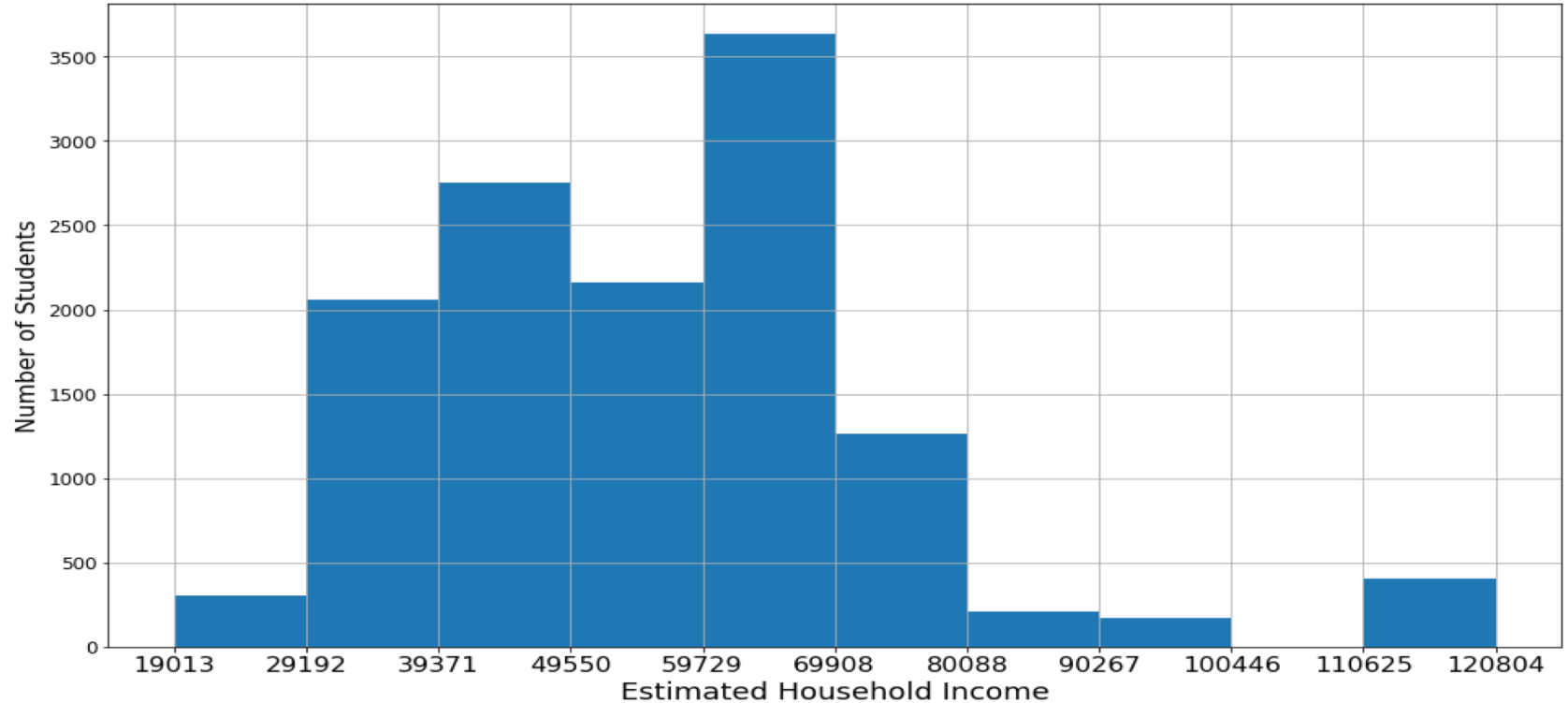
# SPRING 2020 GRADE DISTRIBUTION



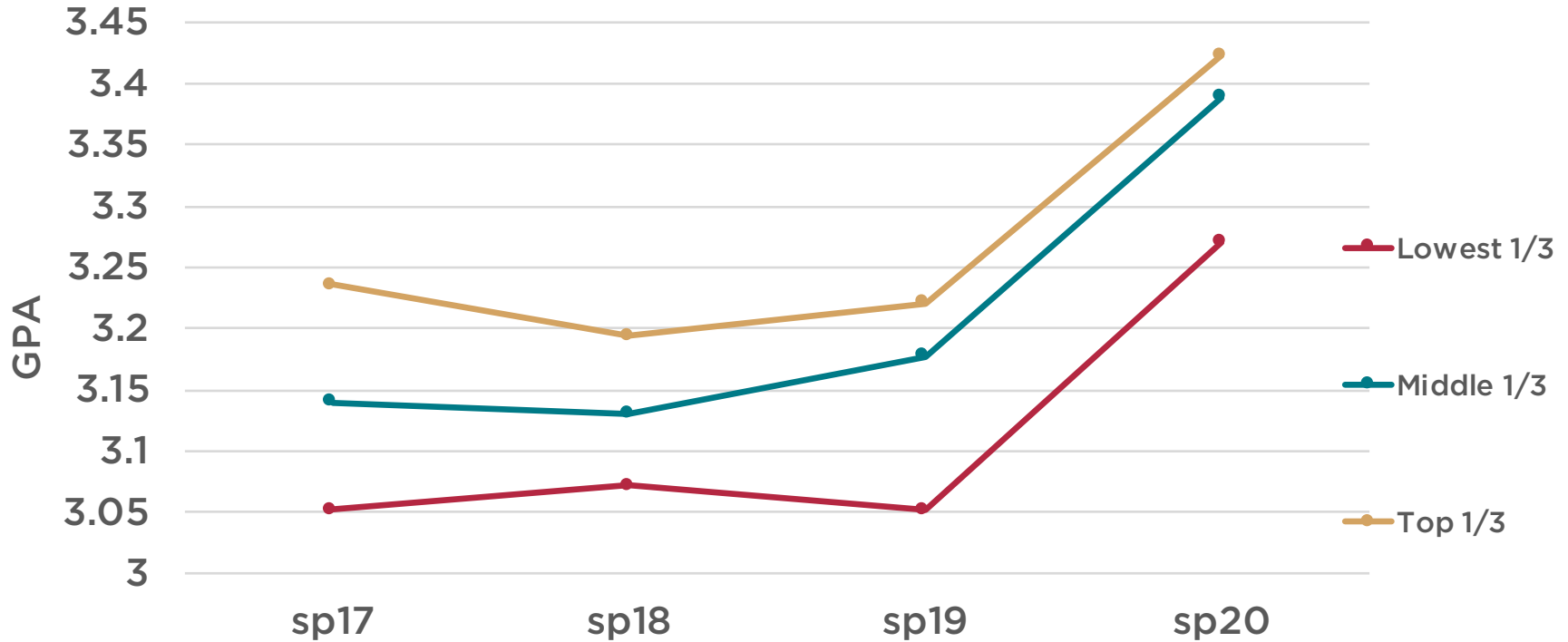
# SEMESTER GPA



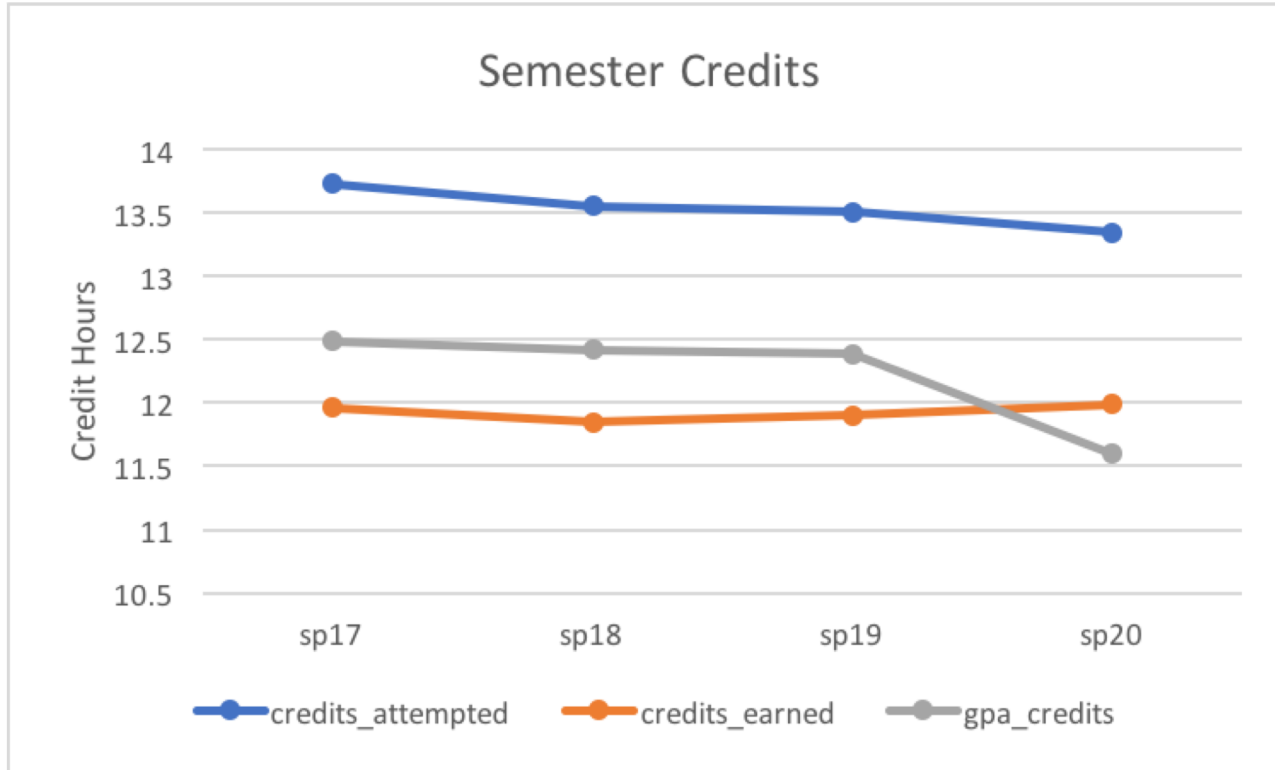
# ESTIMATED HOUSEHOLD INCOME



# SEMESTER GPA - ESTIMATED HOUSEHOLD INCOME



# SEMESTER CREDIT HOURS





# C/NC GRADE MODE INTERVENTION

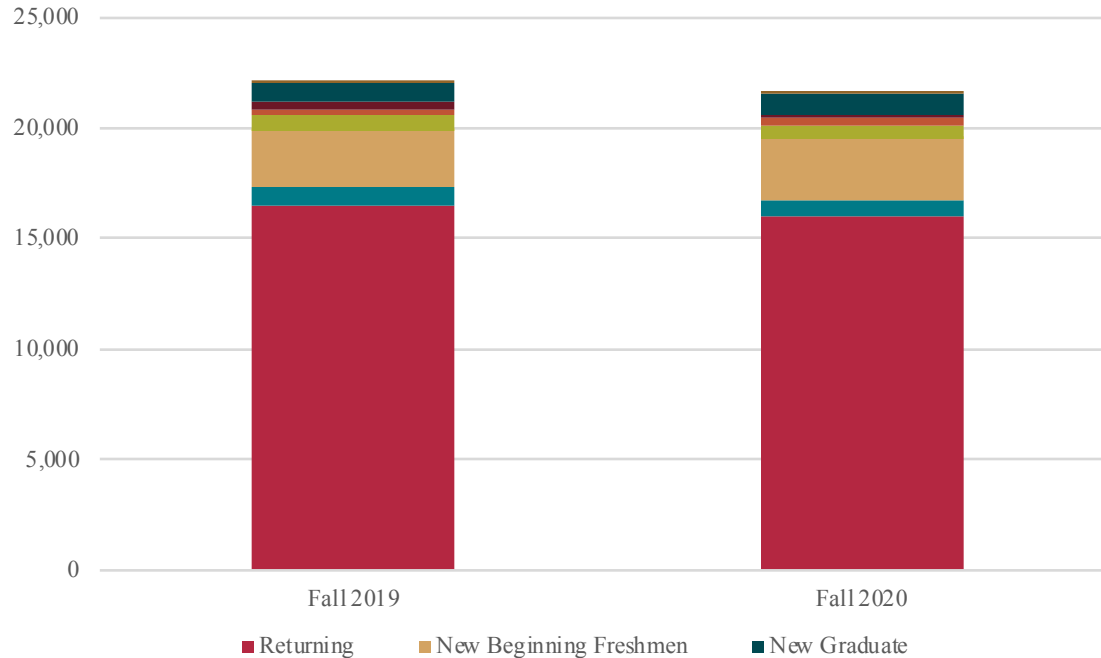
- Students who started the semester in a standard grade mode but changed to C/NC grade mode later in the semester
  - Usually ~100 students in the past semesters (129 in SP19 and 85 in SP18)
  - For Spring 2020, 2839 students

# **Phased Reopening - Protecting and Serving the Community**



# POSITIVE ENROLLMENT MARKERS

## 1st Day of Fall Classes 2019 Compared to 2020



# RETURN TO FULL OPERATIONS

## UNM Return to Full Operations: A Phased Approach



# FALL SEMESTER: BRINGING BACK THE PACK



UNM A-Z myUNM Directory Help more Search

## Bringing Back the Pack



Expectations Students & Instructors Campus Protocols Business Processes Research Guidelines Protecting the Pack FAQ

### It's the Week of August 17th. Here's What You Need to Know

The University of New Mexico, including our Health Sciences Center (HSC), is working hard to responsibly "Bring Back the Pack" by enacting a [comprehensive plan to move our campus back to a fully operational status](#). This week, here's what you need to know:

#### Information on Targeted Testing for Lobos

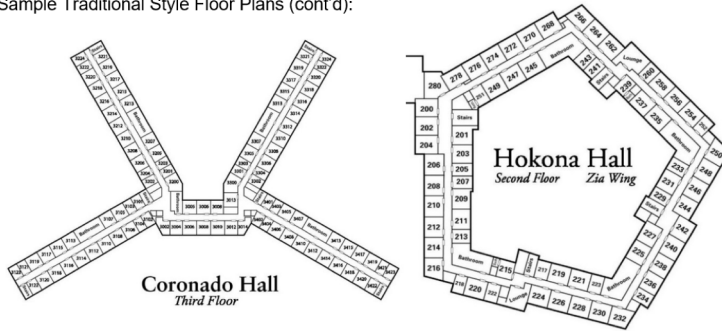
##### Latest Guidance:

- At a time when Lobos need information quickly on class schedules, financial aid, graduation requirements, or just a little help navigating campus—the UNM Division of Enrollment Management is [providing virtual assistance through its "Ask Me" portal and campus kiosks](#). They'll be taking questions starting on Monday, August 17, from 9 a.m. to 1 p.m., and again at the same time on Tuesday, August 18.
- Guidance is now available for instructors on [what to do if a student informs you they have tested positive for COVID-19](#).
- [Main Campus Facilities Guide](#)



# HEALTH PROTOCOLS

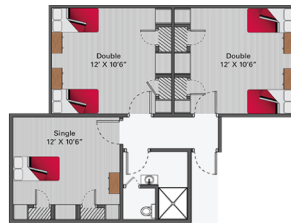
Sample Traditional Style Floor Plans (cont'd):



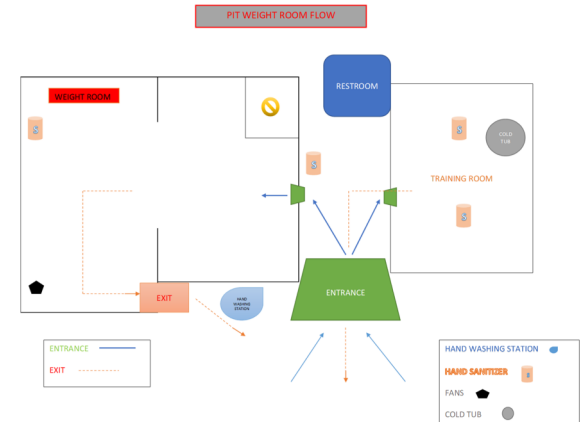
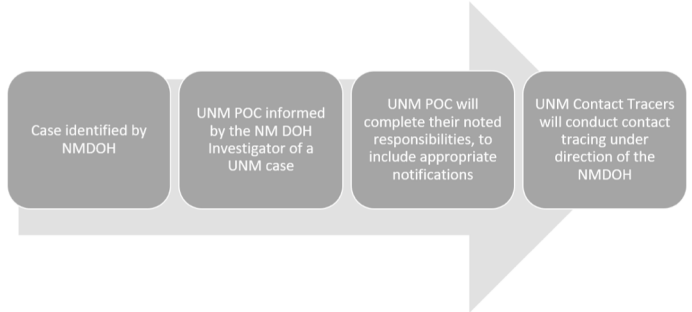
## Suite Style

A suite accessible off an internal stairwell consisting of 2-4 bedrooms sharing a bathroom with a toilet, shower and sink. May have an adjacent lounge with couches. Public areas and bathrooms are cleaned several times per week. Note: ACC Casas del Rio is a suite style facility with connecting bathrooms that residents are responsible for cleaning (not pictured).

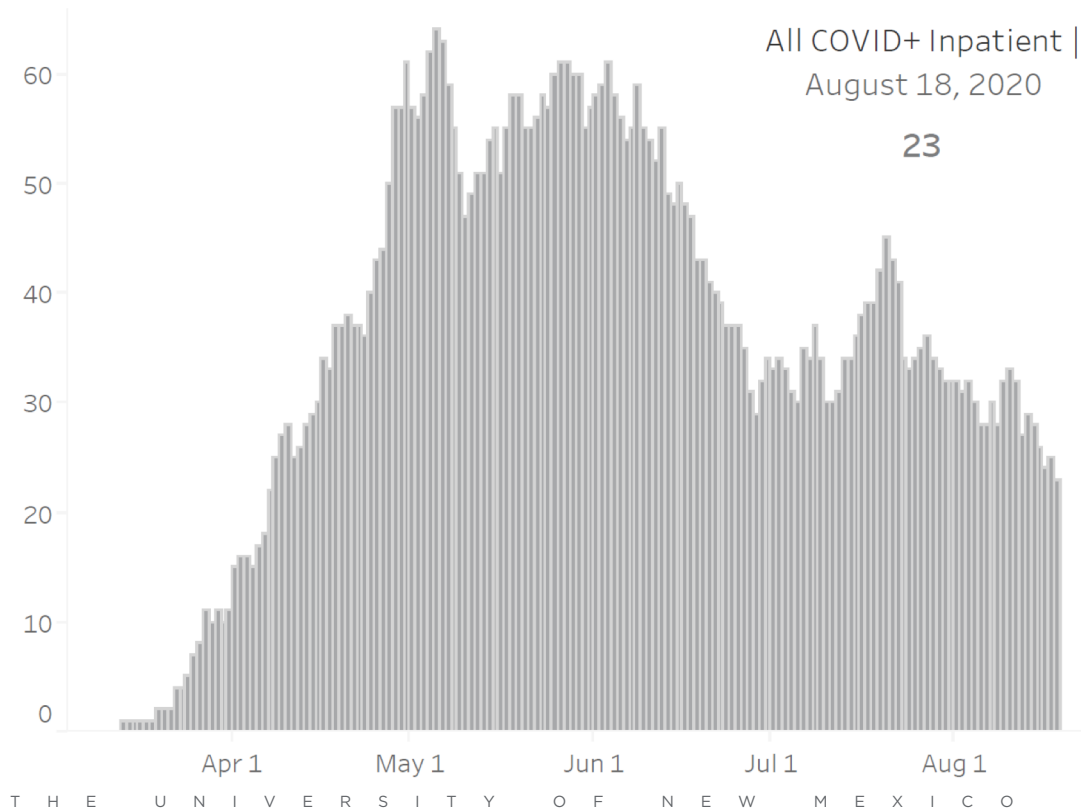
Suite Style Floor Plan:



## Apartment Style

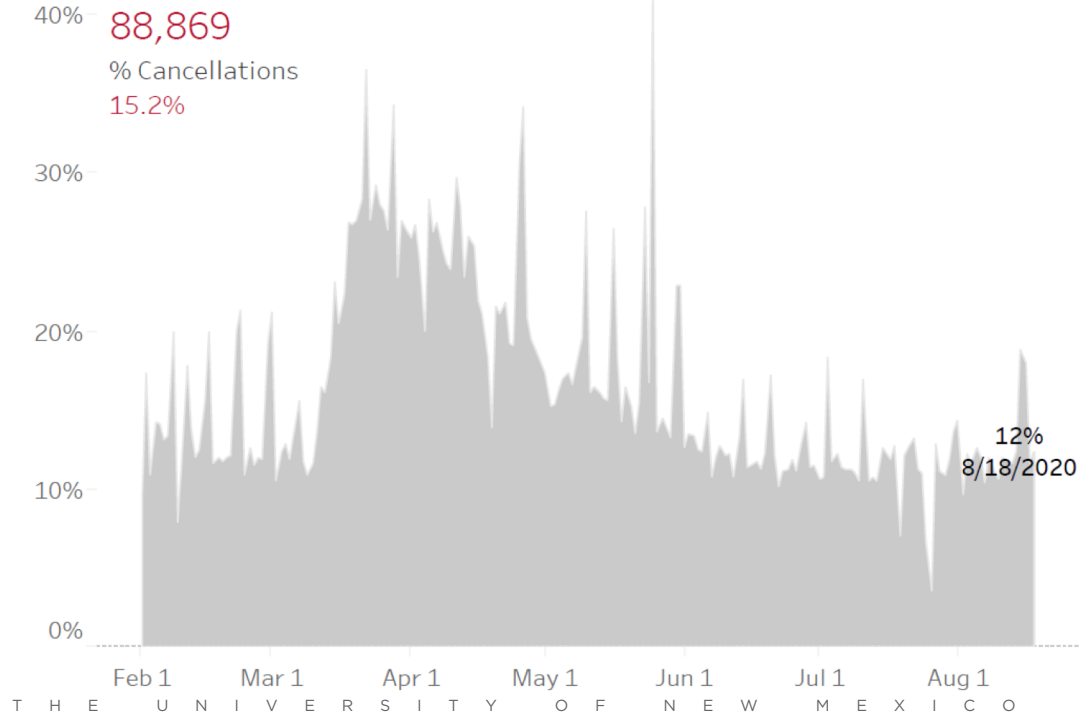


# COVID-19 AT UNM HEALTH SYSTEM



# SURGE IMPACT ON CLINICAL OPERATIONS

UNMHS Clinics Canceled Appointments





# Curriculum Planning During a Pandemic



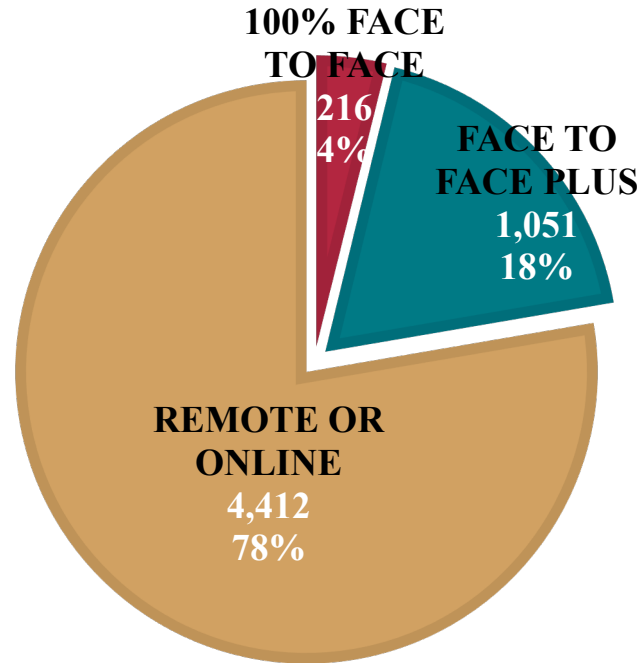
# FALL SEMESTER - CURRICULUM

- Research component has largely reopened
- Hybrid fall class schedule
  - Current peak: 1100 students at noon on Tuesdays
  - Students will receive daily self-screening survey
  - Masks and classroom distancing required
  - Cleaning protocol implemented
- Student housing
  - Space limited to private rooms and isolation capacity

# DESIGN GOALS & CONSTRAINTS FOR FALL INSTRUCTION

- Limit but do not eliminate face-to-face instruction
- Support essential in-person instruction, especially in specialized facilities
- Provide students with access to important resources – study space, internet, safe housing
- Classrooms will be set to allow 6-foot separation between occupants
- Testing capacity remains limited and rationed so Health Protocols prioritized testing into essential, intermediate, and lower priority based on availability of supplies and capacity

# FALL 2020 COURSE MEETING TYPES



# HEALTH EDUCATION PHASED REOPENING

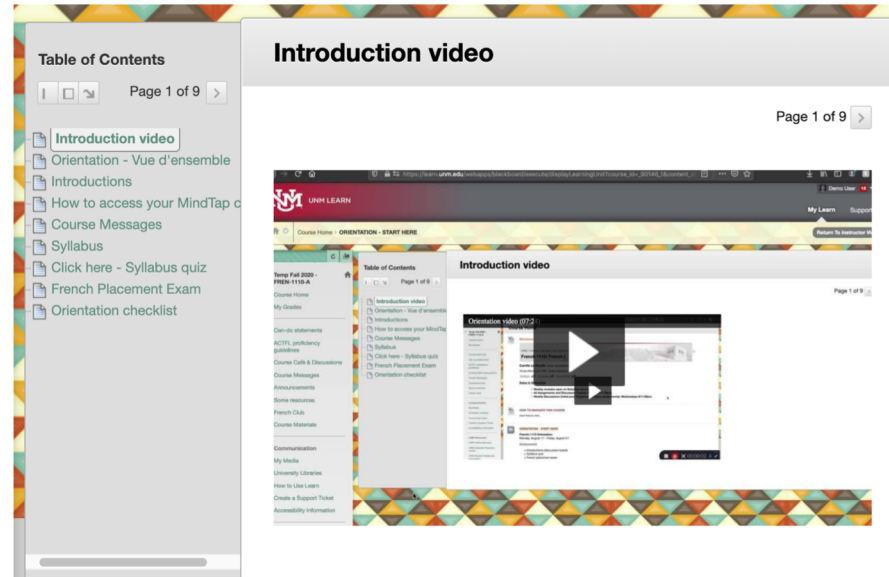
- Almost all fall classes are remote with the possibility of study groups less than 5 meeting
  - Classrooms set with social distancing and low volume if they MUST occur in person
- Clinical labs are primarily conducted remotely with simulation, followed by physically distanced work with manikins, and limited physical contact
- Students began a phased return to clinical environments in mid-June, being very closely monitored
  - Initially engaged with telemedicine, followed by careful monitoring to ensure appropriate PPE and training standards were met
  - Learners are not treating known COVID + patients

# CENTER FOR TEACHING AND LEARNING

- CTL Summer Faculty Development Courses modeled evidence-based teaching techniques and encourage instructors to implement several strategies related to:
  - Creating a welcoming environment
  - Increasing instructor presence & sense of community
  - Creating active & inclusive learning opportunities to support all students
  - Providing a clear pathway for success in the course

# CREATING A WELCOMING ENVIRONMENT

- Orientation module with introduction video from the instructor
- Support services readily available on the left-hand navigation



# INSTRUCTOR PRESENCE & SENSE OF COMMUNITY

- Introductory discussion board for students to meet one another
- Course café (multiple avenues of instructor interaction)
- Weekly video presentations
- Introducing Co-Curricular Activities (French Club)





# ACTIVE & INCLUSIVE LEARNING OPPORTUNITIES

- Interactive and collaborative learning activities (Flipgrid, MindTap, cultural assignments)
- Can-do statements for students to self-assess their progress

The screenshot displays a digital course page for 'Semaine 1 - Vue d'ensemble'. On the left, a 'Table of Contents' sidebar lists: 'Semaine 1 - Vue d'ensem...', 'Vidéo Semaine 1', 'Flipgrid - Semaine 1', 'Quiz S1', and 'Semaine 1 checklist'. The main content area is titled 'Semaine 1 - Vue d'ensemble' and includes a 'Page 1 of 5' indicator. Below the title is a dark red banner with the text 'SEMMAINE 1 - VUE D'ENSEMBLE'. The page features a 'Can-do' statement section with the following text: 'A la fin de cette semaine, tu seras capable de : At the end of the week, you will be able to:'. The objectives listed are: '-Reconnaitre et mémoriser des expressions utiles pour la classe virtuelle' (Recognize and memorize useful online classroom expressions), '-Reconnaitre et répéter les salutations françaises' (Recognize and repeat French greetings), '-Se présenter et dire d'où l'on est avec le verbe 'être'' (Introduce yourself and tell where you're from with the verb 'être'), '-Prononcer l'alphabet et épeler des mots' (Pronounce the alphabet and spell words), '-Différencier l'usage de « tu » et « vous »' (Differentiate the use of « tu » and « vous »), and '-Reconnaitre différents types de salutations françaises' (Recognize different types of French greetings). To the right of the text is an illustration of five cartoon figures with speech bubbles. Below the illustration is a box titled 'À FAIRE / TO DO' containing the tasks: '-Discussion Flipgrid', '-Quiz S1', and '-Mind Tap'.

# CLEAR PATHWAY FOR SUCCESS

- Syllabus and schedule readily available
- Course navigation video
- Detailed course map aligning learning objectives, materials, activities, and assessments
- Consistent module organization with helpful overview pages and checklists



UNM - Foreign Languages and Literatures  
**French 1110: French I**

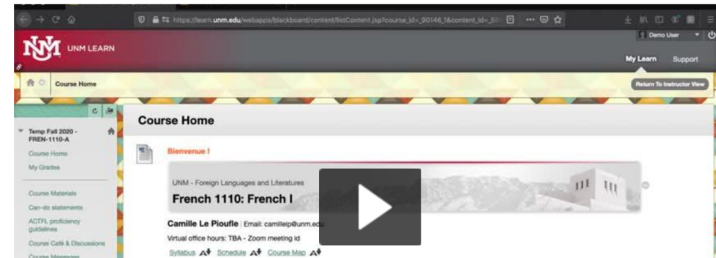
**Camille Le Pioufle** | Email: [camillep@unm.edu](mailto:camillep@unm.edu)  
Virtual office hours: TBA - Zoom meeting id

[Syllabus](#) ⚡ [Schedule](#) ⚡ [Course Map](#) ⚡

**Dates to Remember**

- **Weekly modules open on Saturday mornings.**
- **All assignments and discussion replies (Flipgrid + culture assignments): Fridays @11:59pm.**
- **Discussions' initial post (Flipgrid + culture assignments): Wednesdays @11:59pm.**

## HOW TO NAVIGATE THIS COURSE



The screenshot shows a video player interface for a course navigation video. The video title is "French 1110: French I" and it is part of the "UNM - Foreign Languages and Literatures" course. The video player includes a play button and a progress bar. The background of the video player shows a scenic view of a building and mountains.

# **K-12 Impacts: The College of Education and Human Sciences**



# UNM COEHS WORKING VISION X3

- To make more progress in New Mexico's education and health equity outcomes than any other state—in collaboration with community partners
- To measure our impact in our response to the grand challenges faced by education in the state and the nation
- To live up to the call for action in the Yazzie/Martinez ruling

# DEAN BURLEY'S CV



- Ph.D. 1993 Texas A&M University in Curriculum and Instruction
- Texas Tech University professor, 25 years
- Assoc. Dean for Undergraduates, Assoc. Dean for Graduates, Assoc. Dean for Academics and Data
- Depart. Chair, Educational Psychology and Leadership
- Research: College access, diversity, institutional research

# WORKING VALUES FOR THE COEHS

- Outwardly facing; community engagement
- Trust; listening; learning—a learning organization
- Transparency
- Shared governance
- Follow the data; then take action
- Relationships; community

# COEHS TARGETS—OUTCOMES FOCUS

- Using ECHO model: Mentor every educator in the state
- The leader in American Indian education
- The leader in LatinX education
- Educational Technology—distance education—advanced instructional and research program that focuses on personalized, blended and technology-enhanced learning (new program)
- Advanced instructional design—research and development of new and robust culturally relevant instructional practices (new program)
- STEM education—Working with educators to prepare students for 21<sup>st</sup> Century workplace readiness (revive and renew old efforts)

# IMPACT

- Measure effectiveness by the impact on the grand challenges
- Partner with stakeholders at the implementation level
- Partner with colleagues across departments and agencies
- Use what we learn to improve our offerings continually
- Tell the world



Thank you!

**Questions?**

