



2021 Legislative Priorities

Ed Partners Presentation
Dec 16, 2020



stressful
collaborative
wild
verwhelming
bitter
challenging
unique
whirlwind thoughtful angry
exasperating solemn
adapt indignant busy
surreal inspiring
chaotic
help crazy sad near
frustrating vulnerable
incredible patience
incomplete hope troubling
ready encrionable



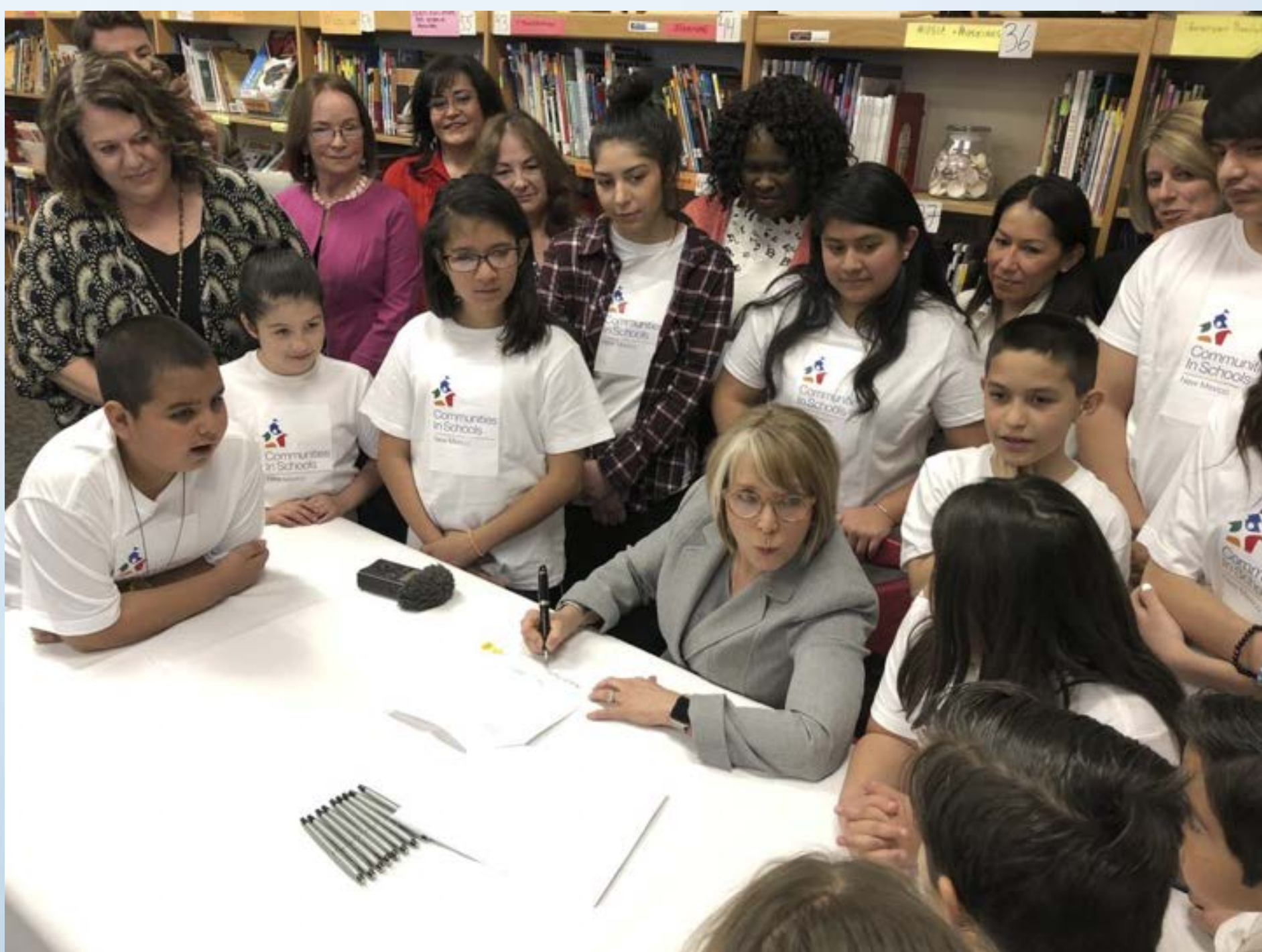
Where to Go From Here?



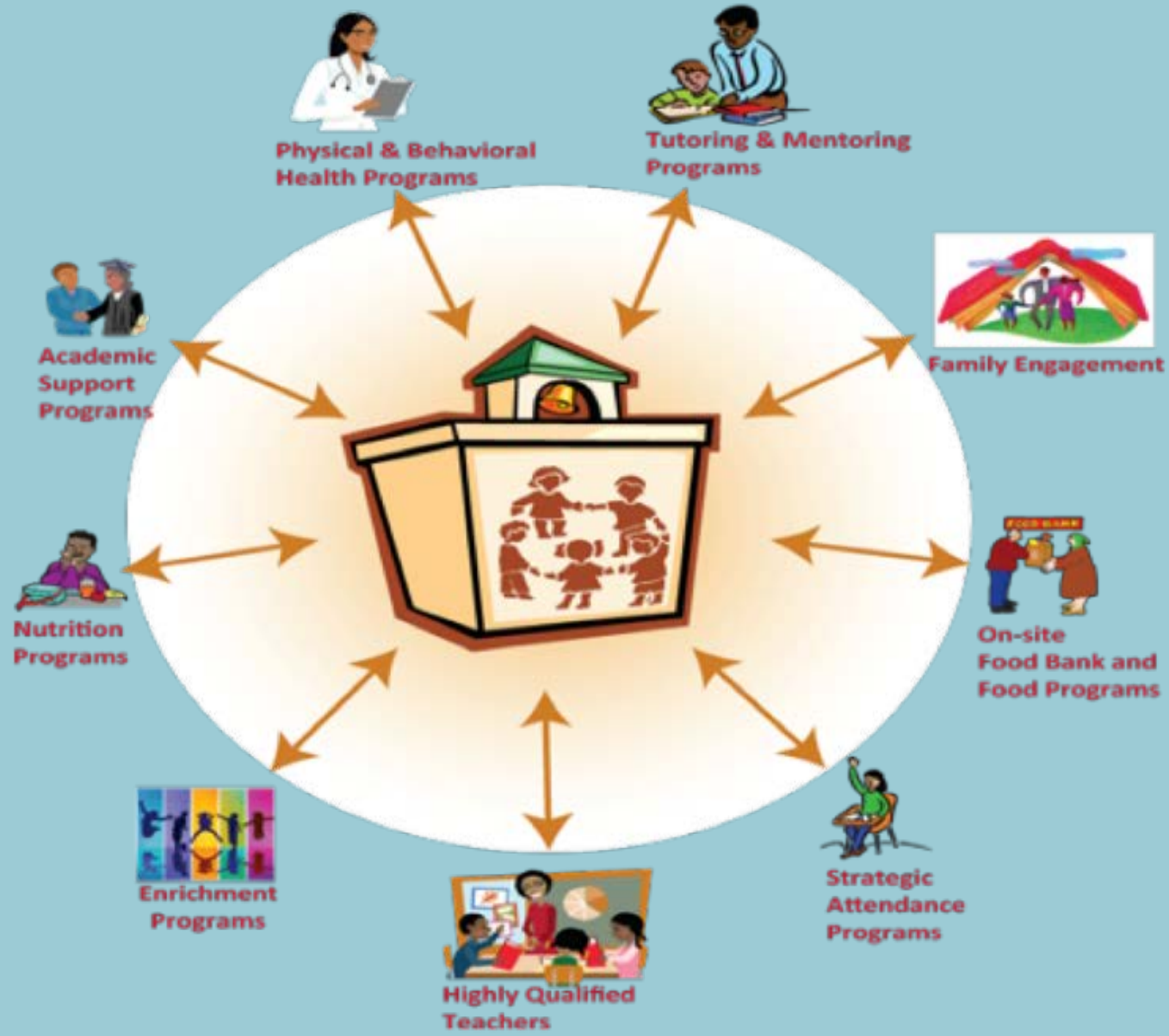
**Beyond “Learning Loss”
Learning: Reimagined and Reinvested**

1. Learning happens in a context where students' culture is affirmed and when their basic needs are met





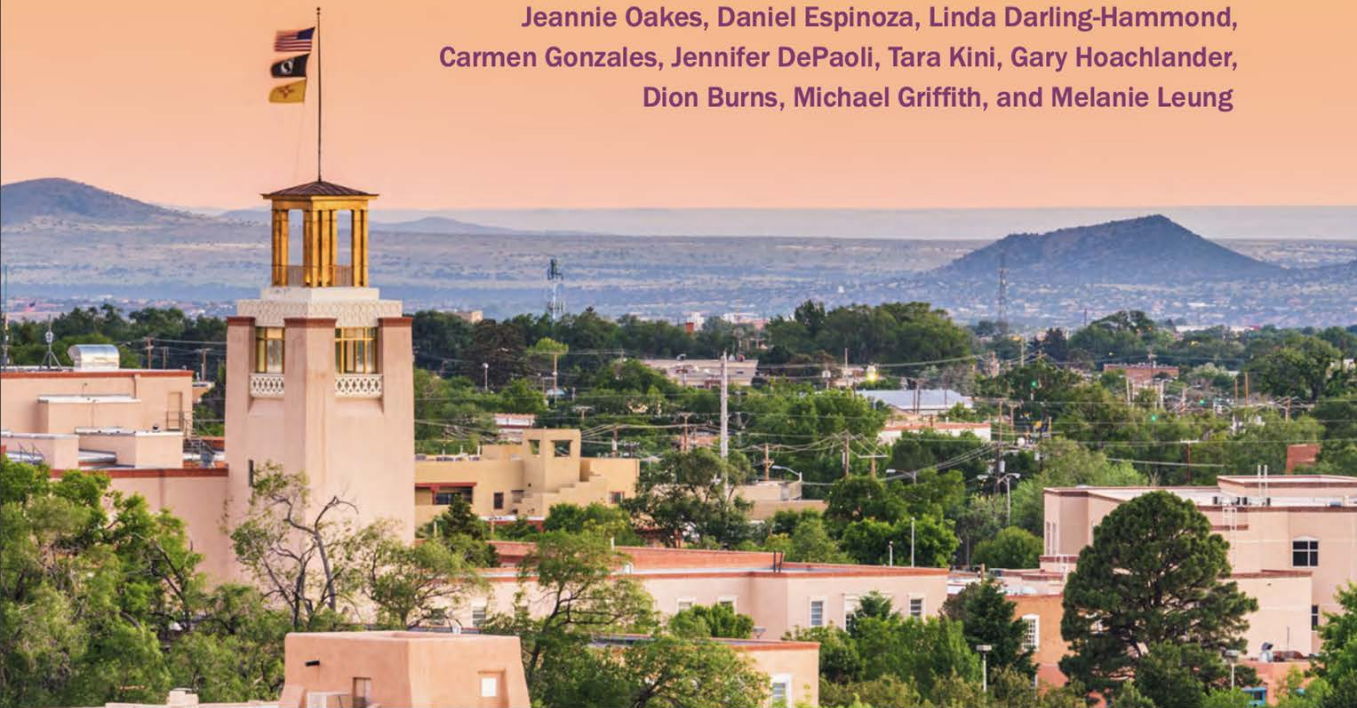
COMMUNITY SCHOOLS



Improving Education the New Mexico Way

An Evidence-Based Approach

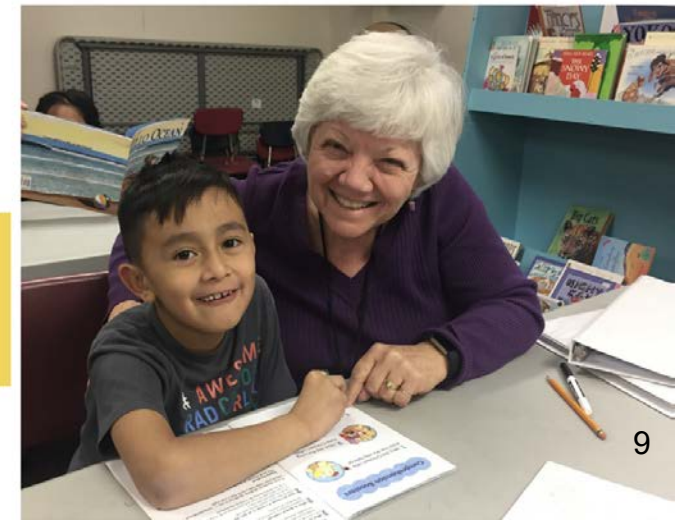
Jeannie Oakes, Daniel Espinoza, Linda Darling-Hammond,
Carmen Gonzales, Jennifer DePaoli, Tara Kini, Gary Hoachlander,
Dion Burns, Michael Griffith, and Melanie Leung



Legislative Priority: Invest in Community Schools Statewide

RETURN ON 
INVESTMENT

of a Community School Coordinator:
A Case Study



**Legislative Priority:
Local Educators
and Communities
should have more
input into
programs like
K-5+, ELTP**



2. Early Learning is Crucial

Legislative Priority:
**Invest in Early
Childhood Care and
Education**



3. Learning Continues After High School into Post-Secondary Education

Legislative Priority:
**Fully Fund
Higher Education**



4. Learning is founded on relationships with high-quality educators



**Legislative Priority:
Attract and Retain
High Quality
Educators**

**Legislative Priority:
Wage Increase to
hold educators
harmless and
mitigate rising
costs
(Especially for
lowest paid
employees)**

**Legislative Priority:

Promote the
solvency and
equity of the
Educational
Retirement System**

5. Learning must take place in a safe and healthy environment

**Legislative Priority:
Support the overall
health and well-
being of students
and educators**



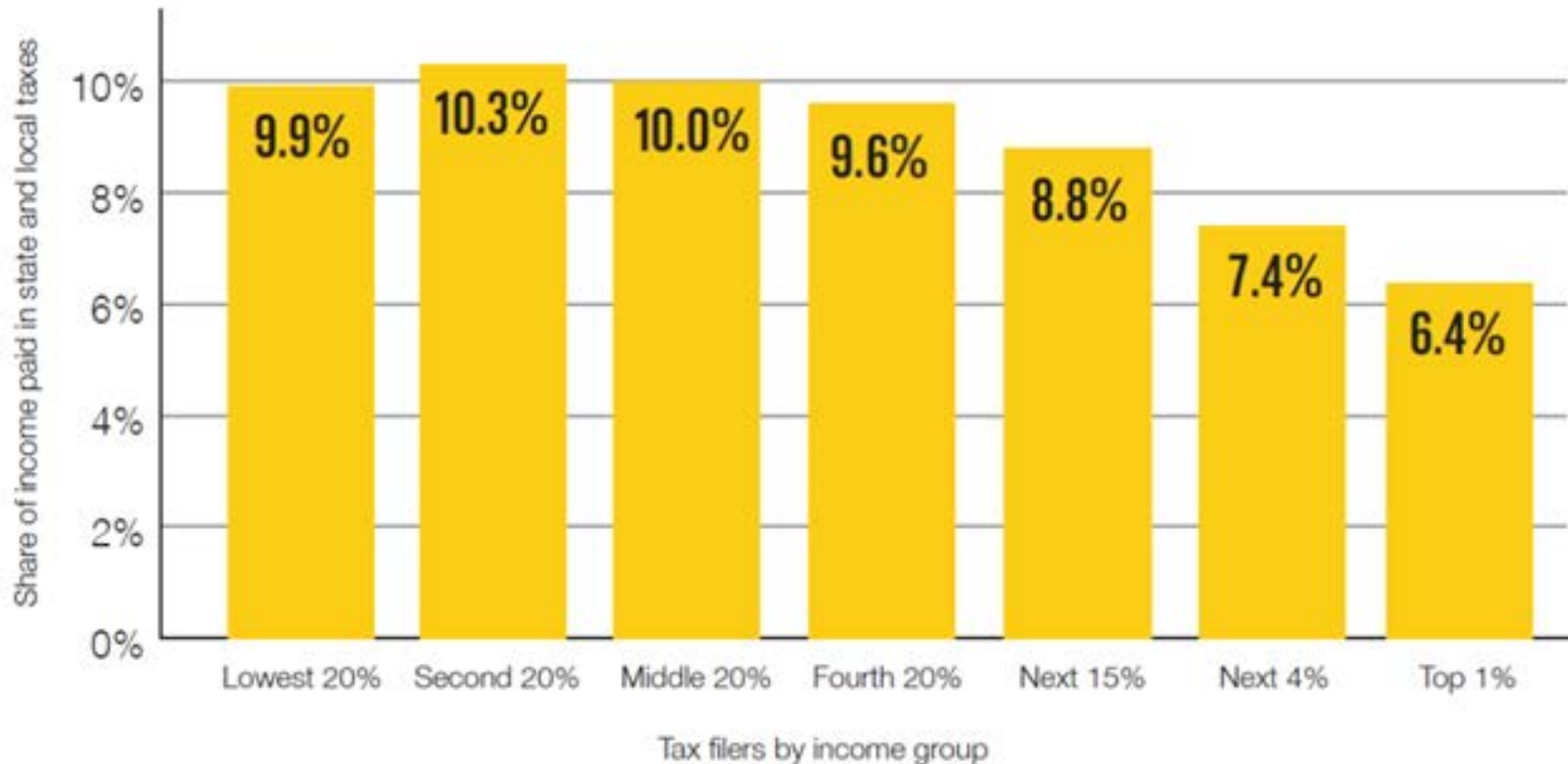
**Legislative Priority:
Prioritize Equity and
Adequate Funding in
Response to Yazzie-
Martinez**



New Mexicans with the lowest incomes pay the highest rates in state and local taxes

New Mexico's Tax System is Upside-Down

Share of Income Paid in State and Local Taxes by Income Group (2020)



Source: *Who Pays?*, Institute on Taxation and Economic Policy, 2018, updated in 2020 with income tax changes enacted in 2019

Legislative
Priority:
Repeal or
reduce
corporate
and
wealthy
income
tax
giveaways



Our Children Deserve It