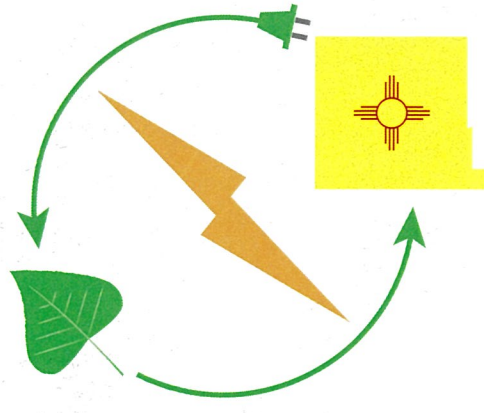


How will The Energy Transition Act Engage Tribal Communities?

What is The Energy Transition Act?

Passed in the 2019 New Mexico Legislative Session, **The Energy Transition Act (ETA)** will help New Mexico transition from fossil fuels towards a more **RENEWABLE** and **CLEAN ENERGY BASED ECONOMY**.



Signed into law by Governor Lujan Grisham in March 2019, *The Energy Transition Act (SB 489)* sets *statewide renewable energy standards* for renewable resources that will make New Mexico a leader in renewable energy.

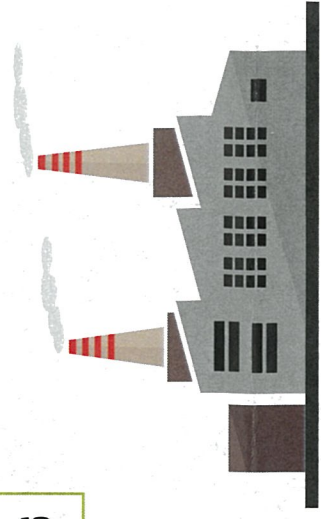
- 50% Renewable Energy by 2030
- 80% Renewable Energy by 2040
- 100% Renewable Energy by 2045

The Energy Transition Act & Tribal Communities

As part of the *statewide transition* effort, the ETA creates **THREE FUNDS** across three state departments: Workforce Solutions, Economic Development, and Indian Affairs. Each department will engage affected communities for input on how the funds should be spent as well as assist with the creation of a community advisory committee.

The Community Advisory Committee **REQUIRES MEMBERSHIP** from **each Indian Nation, Pueblo, or Tribe in the affected community**, as well as four appointees **representing diverse economic and cultural interests**.

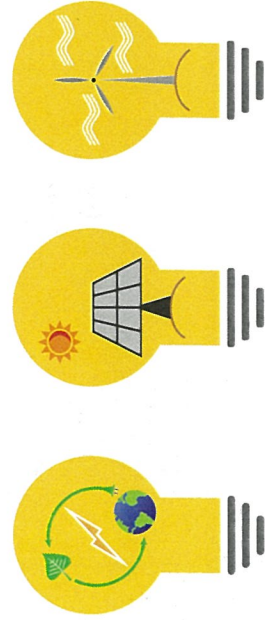
As part of their direct engagement plan, The Indian Affairs Department (IAD) plans to **VISIT EVERY CHAPTER** within the affected community area for input and recommendations on how these funds should be spent.



100 Miles
40+ Displaced Workers

The ETA defines an **AFFECTED COMMUNITY** as "a New Mexico county located within one hundred miles of a New Mexico facility producing electricity that closes, resulting in at least forty displaced workers."

Moving Forward With The Energy Transition Act



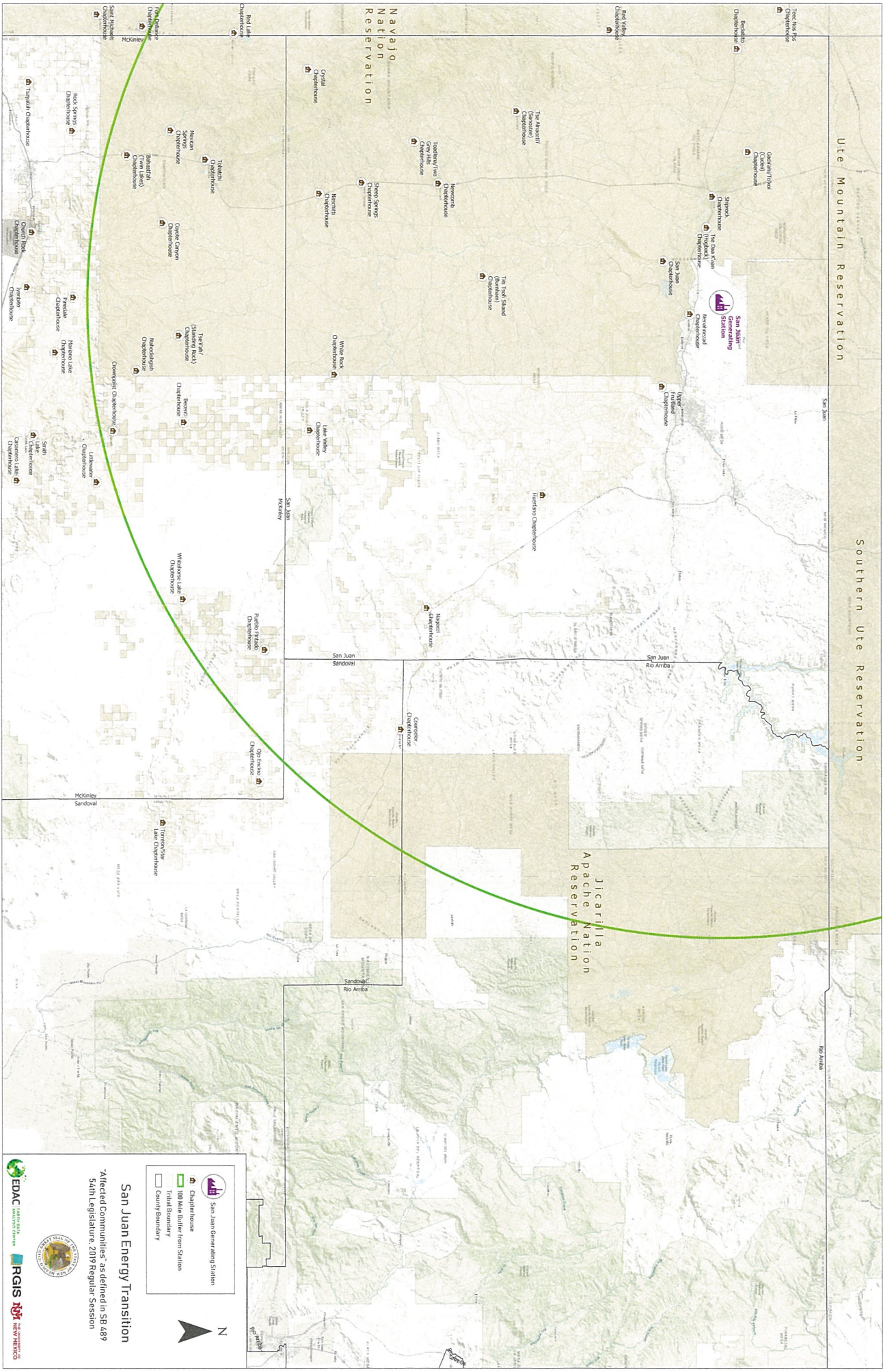
The ETA directs **up to 450 megawatts of replacement power** to be built in San Juan County. However, the **San Juan Generating Station** has the **potential capacity to support over 2000 MW of solar PV power** with redevelopment.

The ETA provides **RESOURCES FOR WORKFORCE RE-TRAINING** for plant and mine workers, with **PRIORITY GIVEN TO COMMUNITIES DIRECTLY AFFECTED BY THE CLOSURE OF THE MINE**. These resources are vital to Tribal communities given the high representation of Native American workers at the mine and generation station who will be directly impacted when the mine closes.

RE

TRAINING

FOR MORE INFORMATION, please contact the Indian Affairs Department at (505) 476-1600 or by email at Energy.Transition@state.nm.us



EDAC
Environmental Data Acquisition Center

RGIS
Regional Geographic Information System

SAN JUAN COUNTY

NEW MEXICO

San Juan Energy Transition
 "Affected Communities" as defined in SB 487
 54th Legislature 2019 Regular Session

San Juan Generating Station
 Chipper house
 100 Mile Buffer from Station
 Tribal Boundary
 County Boundary

N