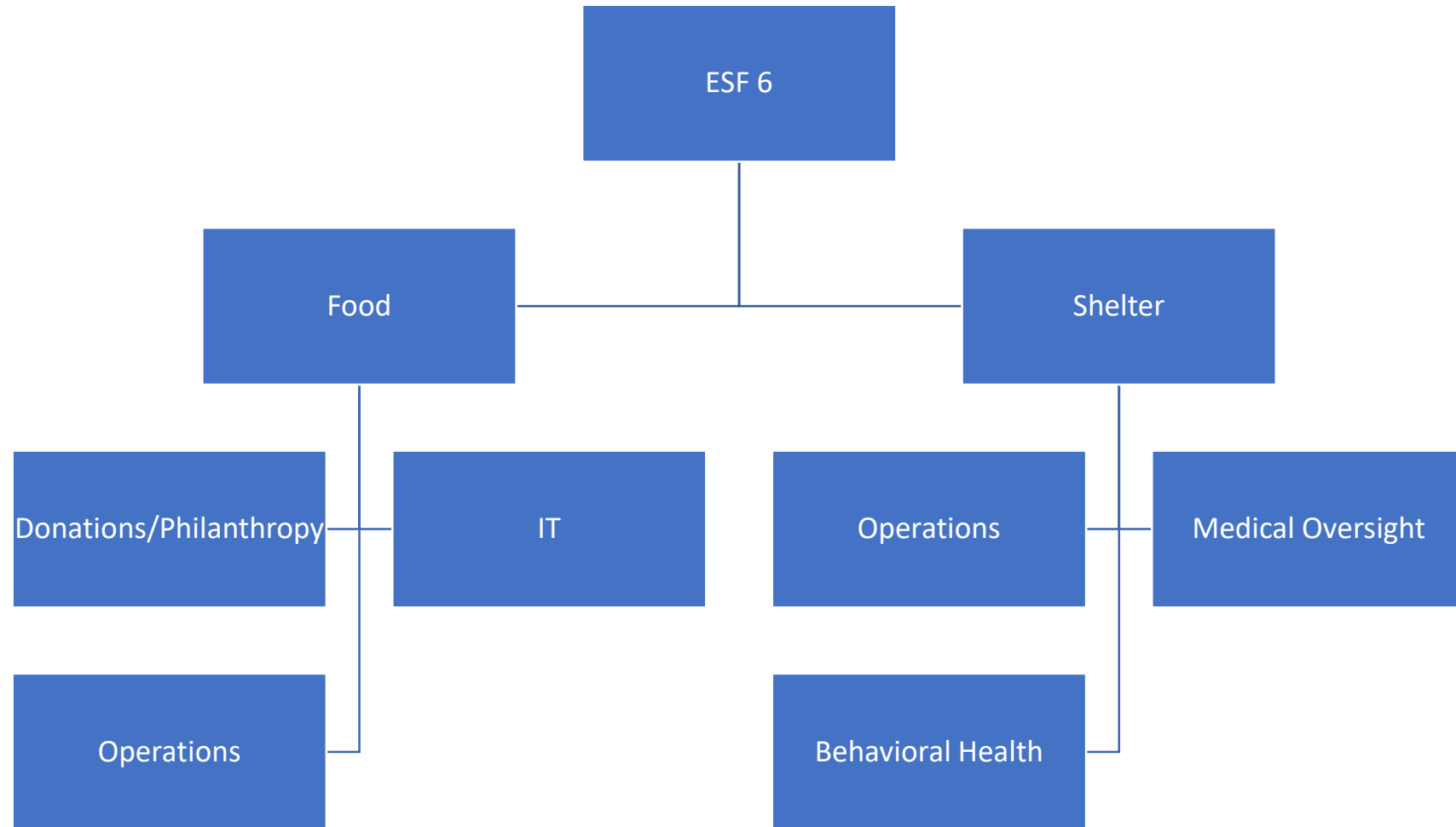


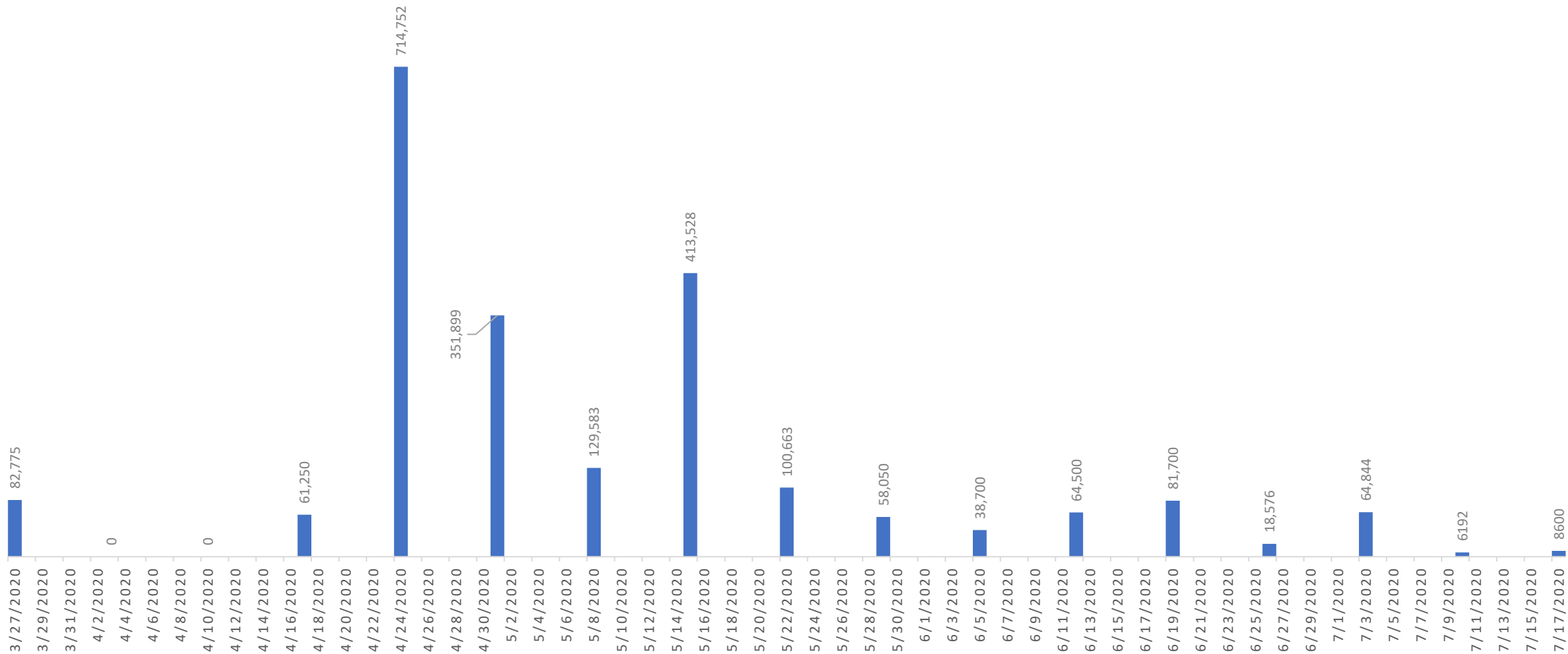
# ESF 6 – Food and Shelter Emergency Response

- Collaborative effort with team members from HSD, DOH, and CYFD with collaboration across state government.



# TOTAL FOOD DELIVERED (ALL PUBLIC)(LB)

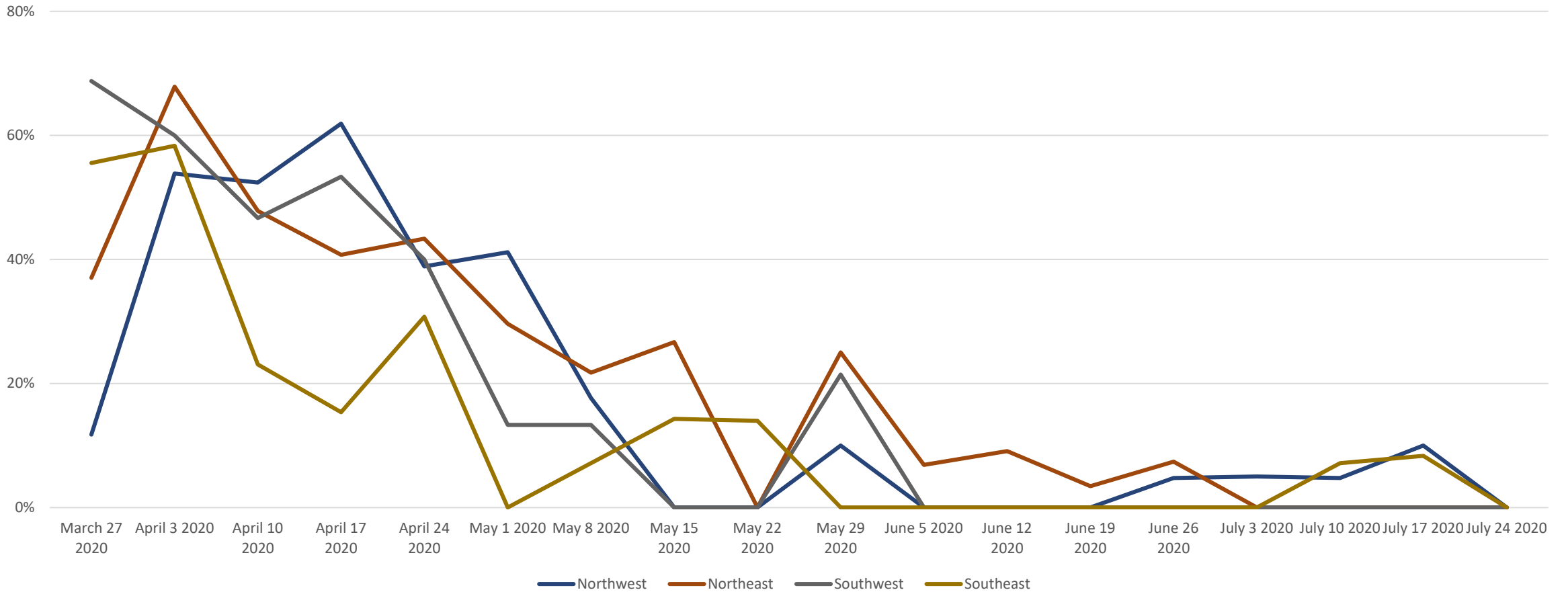
## 2,195,612 LBS



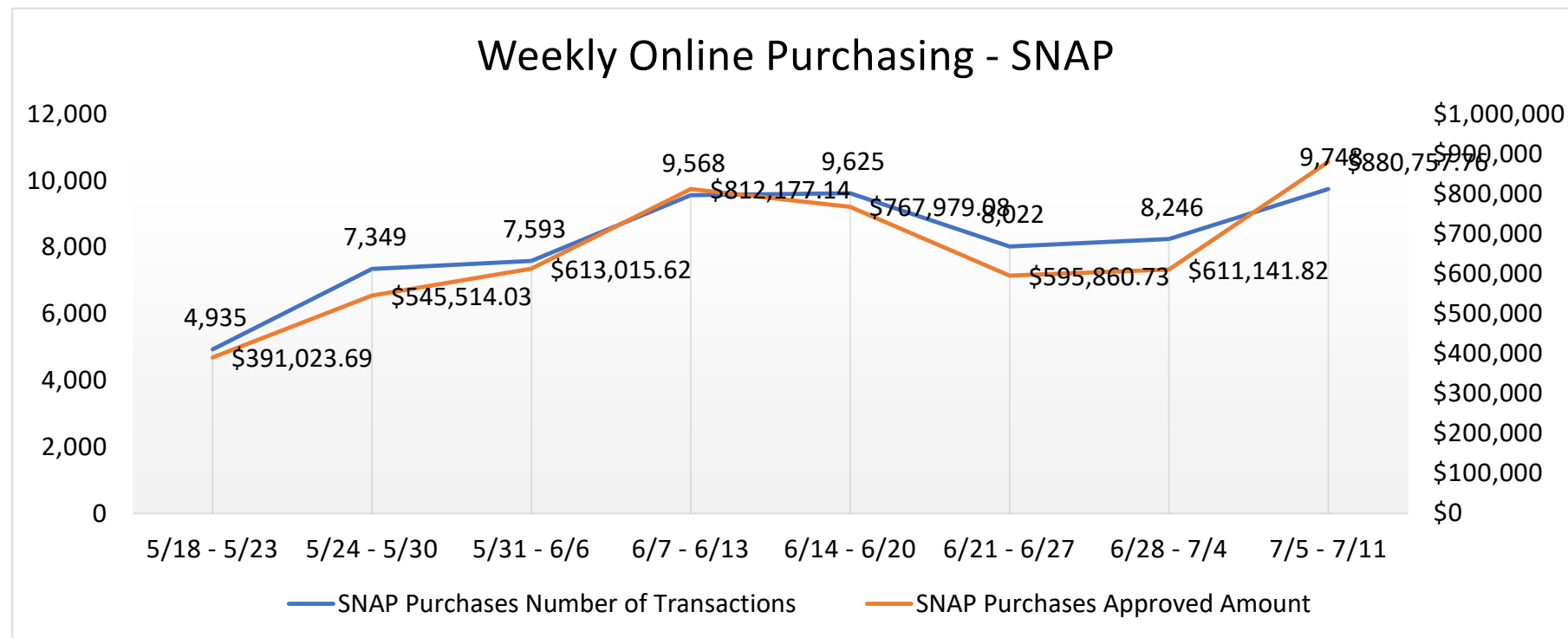
# NM Small Grocer Survey

## % of Incomplete Deliveries

### 7/24/2020



Reporting Date - Jul 19th, 2020



Data Source: ISD/ FIS

Sum of Patients/Workers	1st Responder/Surge Staff	Patients
38	0	38
0	0	0
0	0	0
	0	0
38	0	38
0	0	0
0	0	0
121	14	107
21	0	21
14	14	0
46	0	46
0	0	0
40	0	40
0	0	0
	0	0
	0	0
3	2	1
2	2	0
1	0	1
0	0	0
5	5	0
5	5	0
	0	0
	0	0
16	0	16
0	0	0
16	0	16
	0	0
	0	0
4	0	4
3		3
1	0	1
0	0	0
0	0	0
187	21	166

Hotel Type
<b>Albuquerque</b>
1st Responders/Exposed
1st Responders/Exposed/NO C+
1st Responders not exposed (Nurses assisting with testing)
All Patients (No 1st Responders)
<b>Aztec</b>
1st Responders/Patients
<b>Gallup</b>
All Patients
1st Responders not exposed (Nurses assisting with testing)
All Patients
All Patients
1st Responders not exposed (Nurses assisting with testing) Overfill for Comfort Suites
All Patients
<b>Hobbs</b>
All Patients
<b>Las Cruces</b>
Patients/1st Resp.
First Responders
Patients
<b>Las Vegas</b>
All Patients
<b>Ruidoso</b>
1st Responders/Exposed
<b>Santa Fe</b>
Tribal Only/All patients
1st Responders/Exposed/No C+
<b>Clovis</b>
1st Responders
<b>Farmington</b>
SUD Hotel
All Patients
All Patients

## ESF6 Shelter Operations – Sample Numbers

# ESF6 Shelter Operations – Specialty Shelters

Sum of Patients	% Occupancy
3	12%
24	48%
27	36%



**Detox/SUD Shelters**

Sum of Patients	% Occupancy
38	36%
0	0%
46	46%
40	50%
0	0%
16	42%
1	5%
141	37%



**Medical Shelters**

Medical Shelters/Moving Average Total Patients

