

**PASEO DEL NORTE &
UNSER BLVD
IMPROVEMENTS**

City of Albuquerque

BACKGROUND

- **R-18-84** sponsored by City Councilors Cynthia Borrego and Ken Sanchez, was enacted by City Council on 10/15/2018, establishing the development of roadway cross-sections for *Paseo Del Norte (from Calle Nortena to Universe Blvd.) and Unser (from Kimmick Dr. to Paradise Rd.)*. The Resolution is attached to the back of this powerpoint. Through the concept planning process the Paseo Del Norte part of the project was later extended from University west to Rainbow Boulevard.
- The Resolution declares improving these two roadways as a priority for the City Of Albuquerque's Capital Implementation Program, Transportation Infrastructure Tax, State Legislative Agenda, and List Of Projects For The Transportation Improvement Program of the Metropolitan Planning Area (AMPA).
- Paseo Del Norte and Unser are regional arterials that assemble vehicles traveling from the north and west quadrants of Albuquerque and distribute them throughout the Metropolitan Area (AMPA) and onto the Interstate Highway System.

BACKGROUND (cont.)

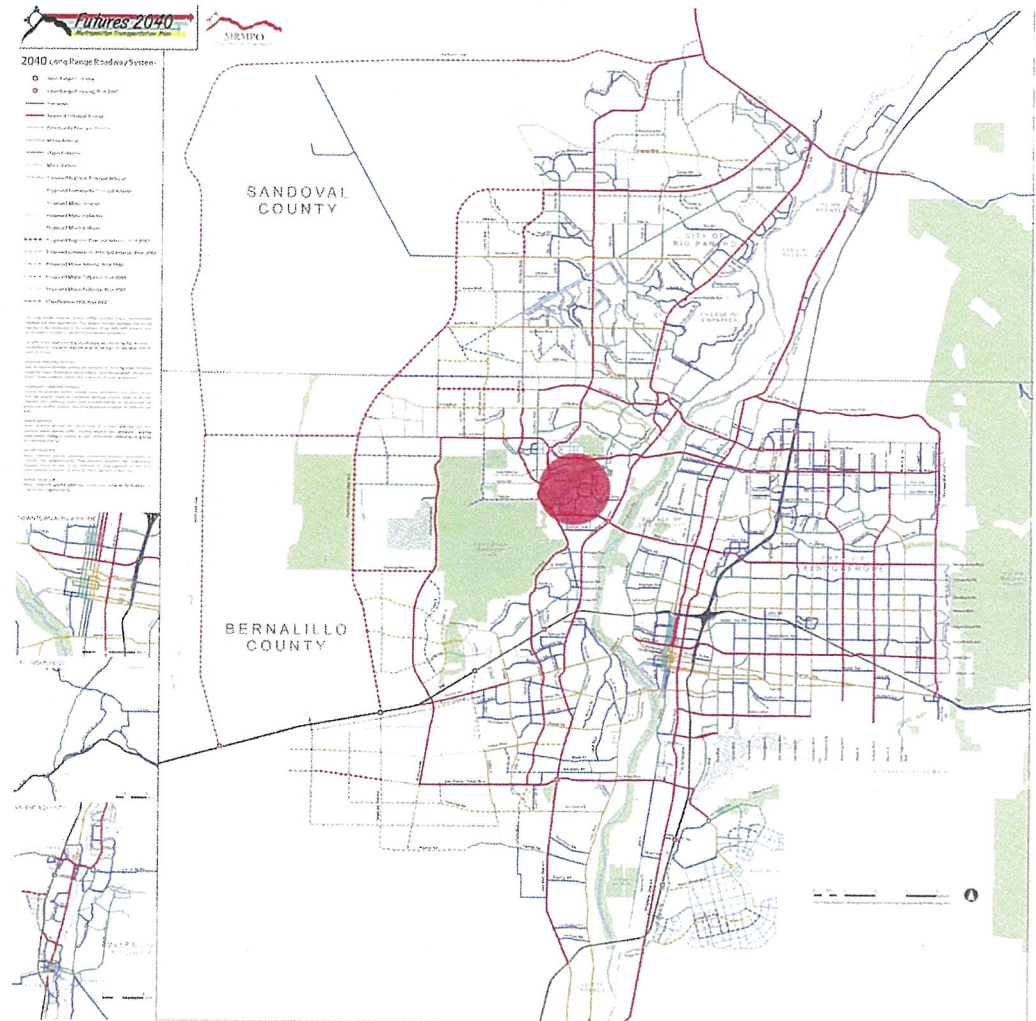
- From where these two roadways intersect on the Northwest Mesa and for nearly a mile in all four directions of the intersection the cross-sections are only developed with one lane in each direction (which is equivalent to the level of neighborhood collector streets).
- Due to the fact that these two trunk lines of the region's traffic system are comprised of only 2 two-lane roadways (the equivalent of a small collector street), these roads are experiencing major congestion issues which has contributed to numerous traffic incidents.
- A review was conducted of traffic patterns and volumes at arterial and collector intersections in proximity to Paseo and Unser, that are partially for the purpose of distributing neighborhood traffic towards this intersection. It was found that instead of traveling towards the intersection, nearly 16,000 motorists a day to avoid the congestion on Paseo and Unser in these sections are diverting off of Unser and Paseo and are using these arterials and collectors as bypasses.

PASEO AND UNSER PROJECT AREA



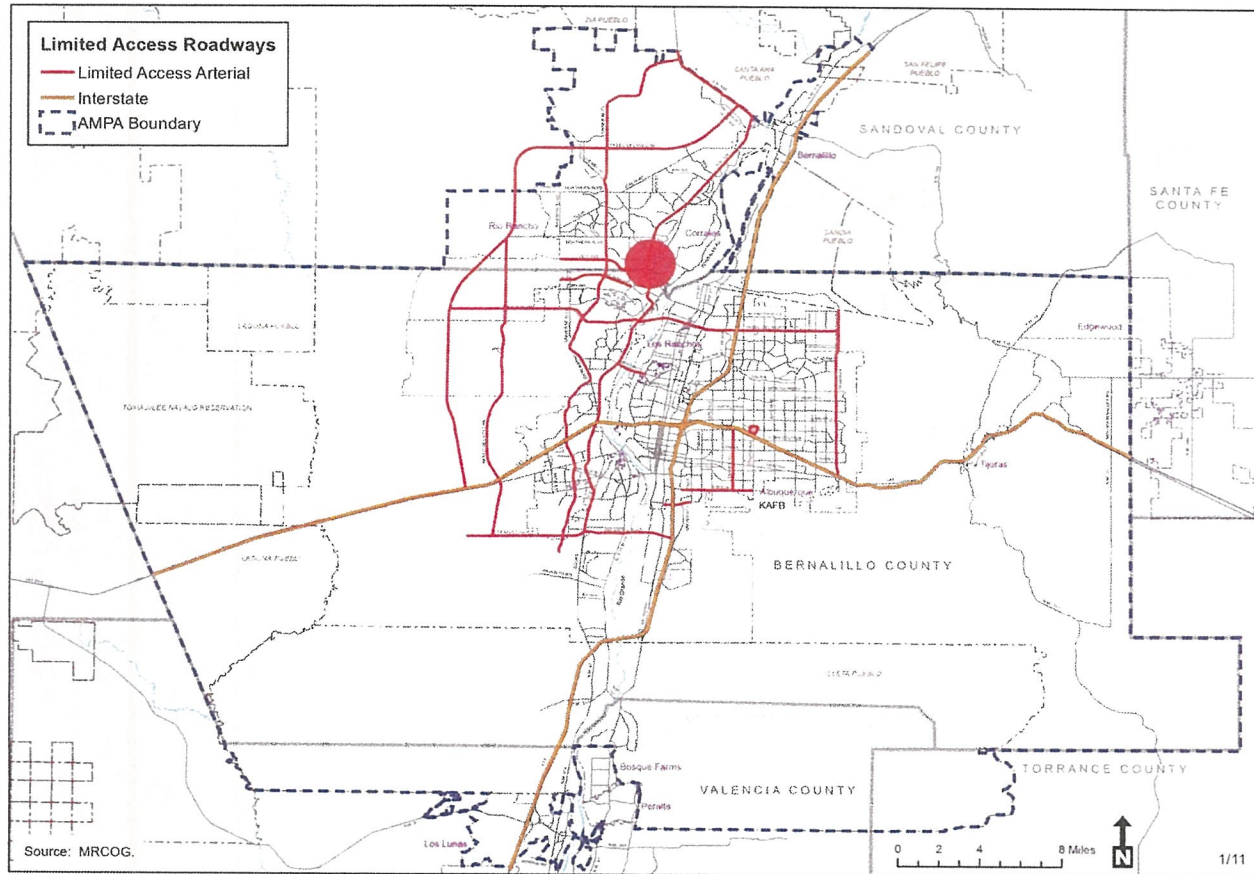
Paseo and Unser are major routes along Albuquerque's...

LONG RANGE ROADWAY SYSTEM



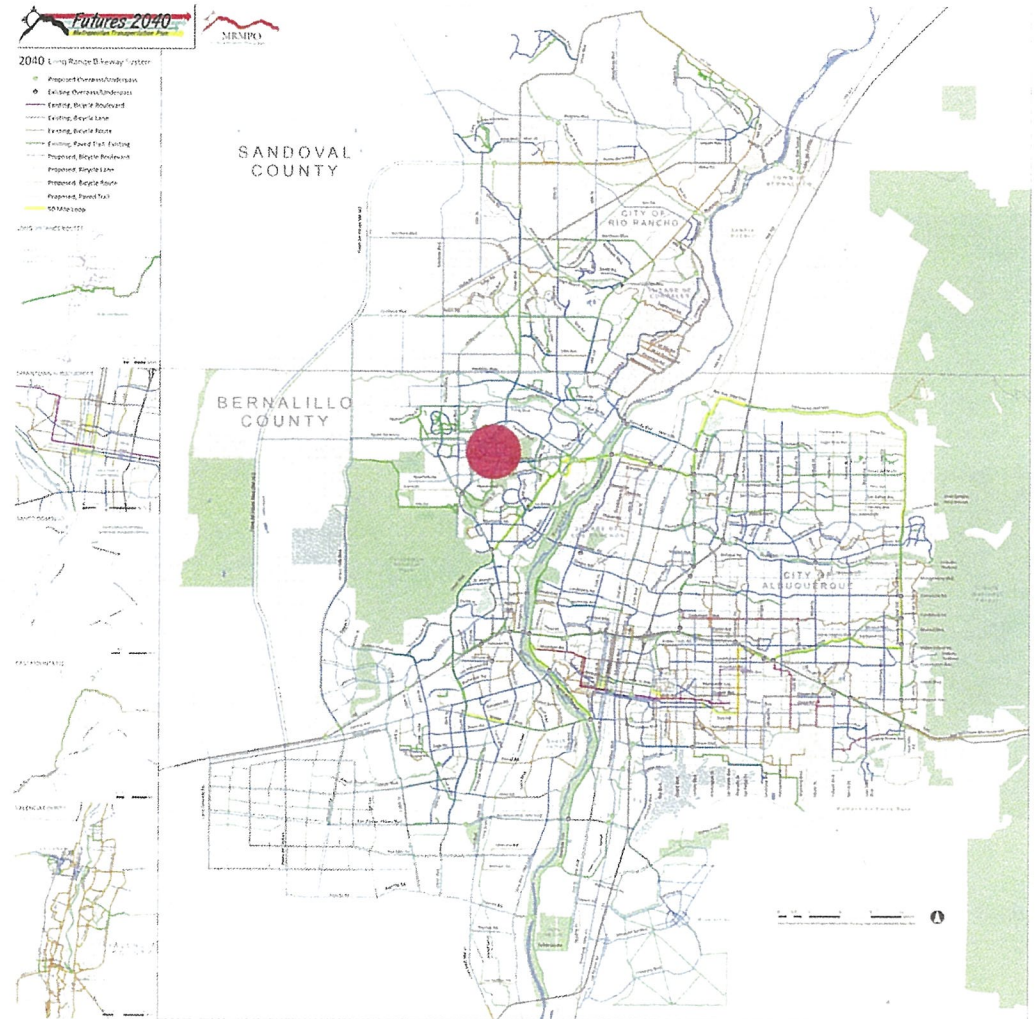
Paseo and Unser are major routes along Albuquerque's...

LIMITED ACCESS ROADWAYS

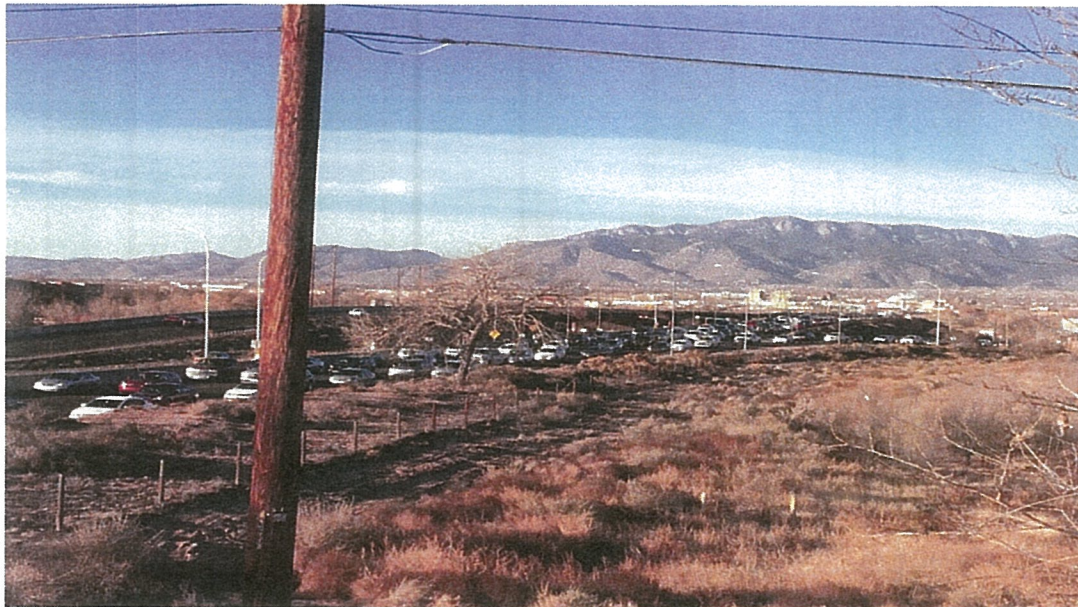


Paseo and Unser are major routes along Albuquerque's...

LONG RANGE BIKEWAY SYSTEM



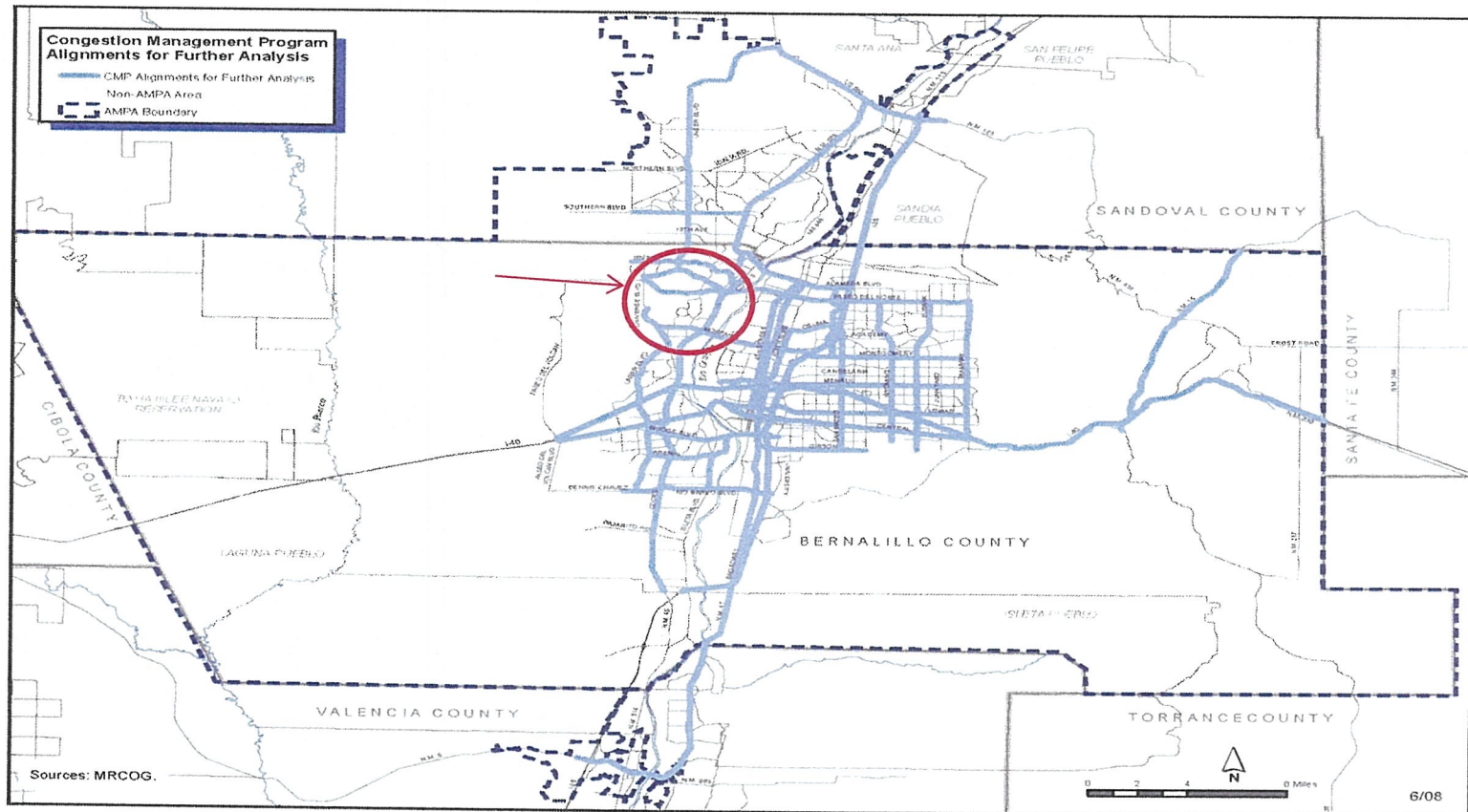
CURRENT CONDITIONS



Coors Blvd. at a standstill from Golf Course Road to east of 4th St. Extends several miles west.

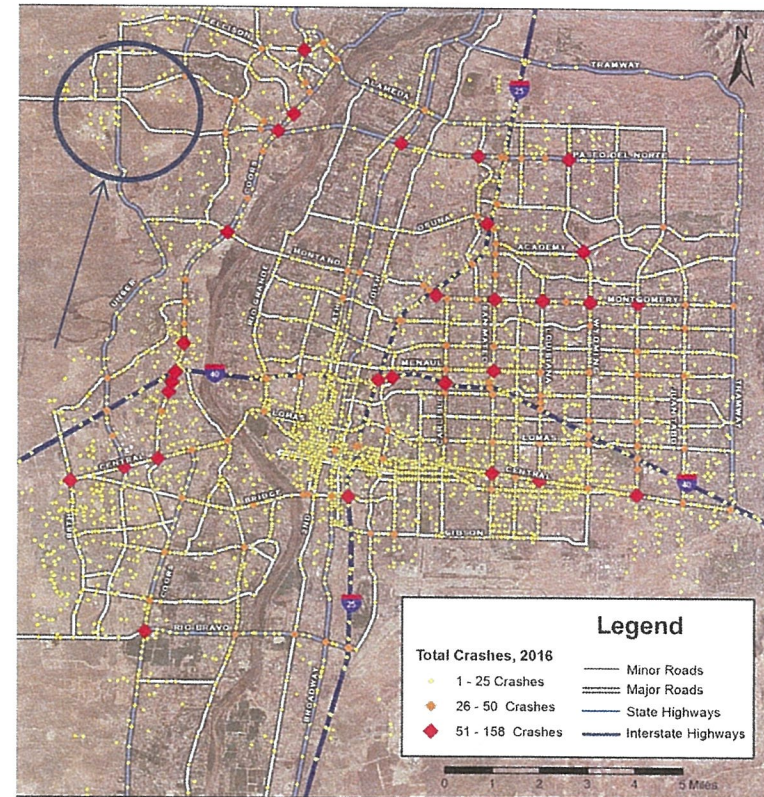
CONGESTION MANAGEMENT PROGRAM

Paseo and Unser are part of Albuquerque's major roadway system where congestion levels must be managed in order to meet federal requirements.



(Since the last report period in 2016, Albuquerque Fire and Rescue and the Bernalillo County Fire Department are reporting a marked increase in accidents at the Intersection of Paseo Del Norte and Unser)

Albuquerque Crashes, 2016



Map prepared by NMDOT

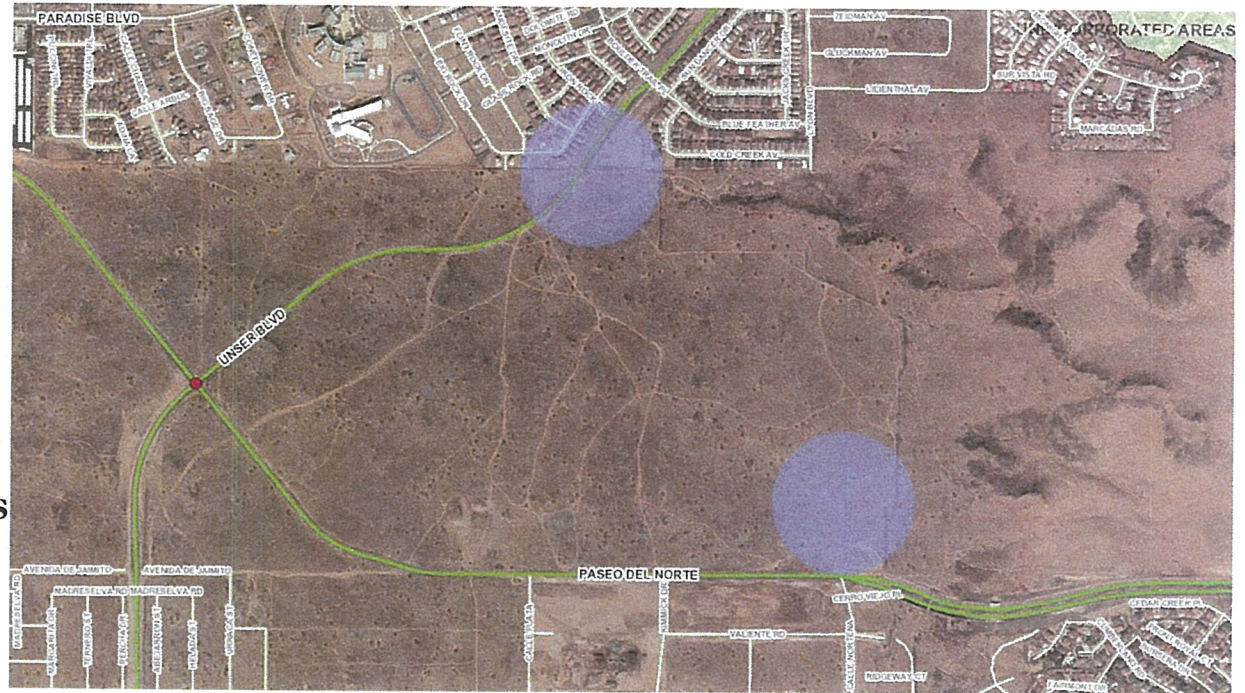


Prepared for the New Mexico Department of Transportation
Traffic Safety Division, Traffic Records Bureau Under Contract CO5801 by the
University of New Mexico, Institute for Geospatial and Population Studies, Traffic Research Unit
tru.unm.edu February 2018 tru@unm.edu



POTENTIAL STORMWATER POND LOCATIONS.

(The City will team with
local flood control authority
to address storm-water flows
from the Roadway.)



Blue circles indicate potential locations

