

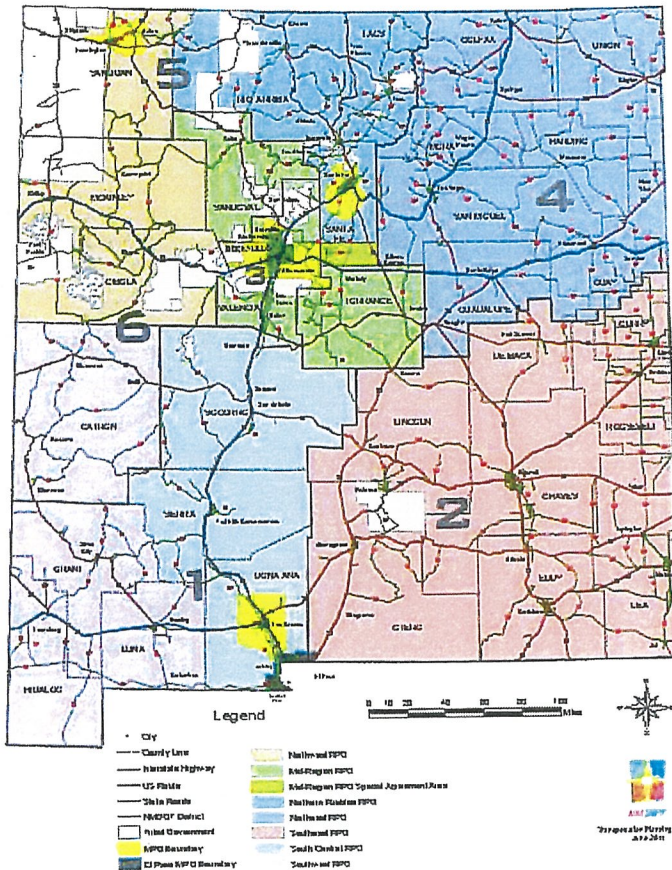
Design and Construction

July 2017

Design / Construction

- The Design / Construction Division
 - Engineering and design services for NMDOT
 - Advancing any project from concept to final design
 - NMDOT Mission: on-time, on-budget multimodal project delivery
 - Construction oversight for NMDOT
 - Providing technical expertise for oversight ensuring federal funding participation
 - NMDOT Mission: on-time, on-budget multimodal project delivery
 - The primary responsibility of Design is to develop projects
 - Statewide Transportation Improvement Plan (STIP). The projects included in the construction program are funded through Federal-aid and the State Road Fund and total approximately ±\$400M / annually (±\$1.5B 2018-2023)
 - http://dot.state.nm.us/content/dam/nmdot/STIP/Official_STIP.pdf
 - Design / Construction staffing ±300 FTE's who provide project development project development support or construction oversight
 - professional or consulting services \$20M - \$30M annually
-

Design and Construction Division



Infrastructure

- North, Central, South Regions
- Programs
 - Bridge, Traffic, Drainage

Plans Specifications Estimate

Environmental

Environmental Geology

Survey

Right of Way / Utilities

Construction Civil Rights

Types of Projects:

- New Construction
- Roadway/Bridge Reconstruction
- Roadway/Bridge Rehabilitation
- Drainage Improvements
- Intersection Signalization & Lighting

District	Control Number	Project Description	Termini	Termini Cont.	Revised Contract Amount	County
1	00007682	Roadway Reconstruction	NM 136, Santa Teresa Commercial Vehicle	Enforcement Facility for 0.629 Miles.	8012490.04	CDON
1	1100910	Bridge Rehabilitation	I-25, MP 79.230 to MP 144.200 for 0.128 miles.		3292836.82	CSOC
1	000G18A4	Roadway Reconstruction	I-10/NM 227 Interchange and I-10/NM 228 Interchange	for 4.290 miles.	9560464.34	CDON
1	E100060	Roadway Rehabilitation	NM 460, MP 0.000 to MP 1.699		2406332.77	CDON
1	LC00100	Roadway Reconstruction	I-25, MP 0.850 to MP 3.400		16252093.41	CDON
1	LC00150	Roadway Rehabilitation	I-10, MP 133.000 to MP 146.000 for 13.000 miles		6052391.36	CDON
1	9900361	Safety	I-25, MP 51.130 to MP 74.750 for 23.619 miles		2749719.95	CSIE
1	1100560	Bridge Replacement	NM 90, MP 41.405 to MP 41.604		8192833.52	CGRA
1	1100611	Bridge Rehabilitation	I-10, MP 28.750 to MP 30.000 for 0.490 miles		6287076.85	CHID
1	1101240	Bridge Rehabilitation	NM 27, MP 25.400 to MP 26.000 for 0.600 miles		698407.86	CSIE
1	ER14109	Roadway Reconstruction	NM 1 at MP 21.200 for 0.130 miles		1771968.13	CSOC
1	E100100R	Bridge Replacement and Roadway Reconstruction	NM 28 at MP 19.467 and NM 186 at MP 0.708 for 0.163 miles		1424057.71	CDON
1	ER14103	Roadway Reconstruction	NM 159 M.P. 8 TO M.P. 10		8362262.27	CCAT
1	1101250	Bridge Rehabilitation and Reconstruction	I-10, MP 91.700 to MP 94.500 for 2.800 miles		4610904.07	CLUN
1	11013301101331	Roadway Rehabilitation	NM 26, MP 0.152 to MP 25.00 for 25.0Miles		7250648.51	CLUN
1	1100570	Roadway Rehabilitation	US 70, MP 166.250 to MP 177.740 for 11.490 miles		7720787.17	CDON
1	LC00120	Roadway Recon, Lighting, Signalization	US 70, MP 149.200 to MP 149.500 for 0.300 miles		8079373.39	CDON
1	LC00140	Roadway Reconstruction	US 70, MP 146.400 to MP 146.600 for 0.125 miles		733690.81	CDON
1	1101460	Roadway and Ramp Rehabilitation	I-25, MP 41.000 to MP 58.290 for 17.290 miles		8957711.77	CDON

1	C1150926	Roadway Rehabilitation	NM 138 (Tortugas Drive), MP 0.038 to MP 0.564 for 0.526 mile	569706.83	CDON
1	LC00240	Roadway Reconstruction, Signalization	US 70, MP 162.000 to MP 170.000 for 8.000 miles	4691252.19	CDON
1	1100660	Roadway and Ramp Reconstruction, Roadway Rehabilitation,	I-25, MP 154.050 to MP 157.840 for 3.790 miles	21987373.24	CSOC
1	E100210R	Roadway Reconstruction	NM 273, MP 5.600 to MP 5.800 for 0.200 miles	346478.45	CDON
1	C1150921R	C&G w/Sidewalk, Drainage Improvements	NM 320, MP 1.700 to MP 1.876 for 0.176 miles	244443	CDON
2	2100551	ROADWAY RECONSTRUCTION	US 54, MP 72.157 to MP 72.810	5017713.07	COTE
2	2100760	Bridge Replacement	NM 209, MP 19.243 to 19.616	3562317.33	CCUR
2	2101140	Roadway Reconstruction	NM 532, Various Locations Between MP 6.890 and MP 11.950 for 0.440 miles	3445852.32	CLIN
2	2100911	Roadway Rehabilitation	NM 529, MP 0.000 to MP 22.165 for 22.165 miles	25600892.43	CEDD
2	2100890	Roadway Reconstruction	NM 18, MP 22.000 to 31.800 for 9.800 miles	10910119.76	CLEA
2	2101290	Roadway Rehabilitation	US 285, MP 11.000 to MP 20.345 for 9.345 miles	2381064.29	CEDD
2	9900713	Safety (Scaling of Rock Slopes and	US 82, MP 3.000 to 5.000 for 2.000 miles	1059150.12	COTE
2	9900712	Safety (Lighting)	NM 200, MP 3.200 to MP 3.400 and MP 8.300 to MP 8.400 for 0.300 miles	259914.81	CEDD
2	2100372	Drainage Improvements	US 70, MP 206.400 to MP 206.600 for 1.100 miles	556544.63	COTE
2	2102100	Roadway Rehabilitation	NM 128, MP 38.800 to MP 51.581 for 12.760 miles	6685561.77	CLEA
2	2102140	Roadway Reconstruction/Rehabilitation	US 54, MP 118.000 to MP 130.000 for 11.307 miles	7121117.99	CLIN
2	2100400	Roadway Reconstruction/Rehabilitation	NM 209, MP 2.440 to MP 7.140 for 4.700 miles	11105891.62	CCUR
2	2101771	Roadway Rehabilitation/Reconstruction	US 82, MP 107.653 to MP 139.070 for 31.417 miles	58250000	CEDD

2	2101830	Tunnel Rehabilitation	US 82, MP 7.100 to MP 7.700 for 0.600 miles	2720749.48	COTE
2	2101490	Multi-Use Pedestrian Path	US 380, MP 97.420 to MP 97.860 for 0.446 miles	802370	CLIN
2	9900704	Signalization, ADA Reconstruction	FL 4685 (Main St.), MP 4.350 to MP 4.980 for 0.630 miles	660657.5	CCHA
3	000D3025	Roadway Rehabilitation	I-25, MP 248.770 to MP 254.000 for 5.230 miles	5140758.08	CSDV
3	A300420	Roadway Reconstruction and Roadway Rehabilitation	NM 6, MP 18.531 to MP 23.636 for 5.106 miles	5846027.21	CVAL
3	A300698	Bridge Rehabilitation	I-25, MP 224.600 to MP 225.370 for 0.333 miles	873668.88	CBER
3	A300699	Bridge Rehabilitation	NM 423, MP 4.000 to MP 5.870 for 0.341 miles	911095.28	CBER
3	A300280	Rdwy Recon/Rehab, BR Replacement	I-25/Rio Bravo Interchange for 2.500 miles	53398885.3	CBER
4	41001114101080	Roadway Reconstruction	I-25/South Raton Interchange and I-25, MP 450.232 to MP 454.	11850686.21	CCOL
4	4101020	Bridge Replacement	NM 209, MP 70.100 to MP 71.200 for 0.682 miles	3604740.51	CQUA
4	4101140R	Bridge Replacement and Roadway Reconstruction	NM 456, MP 24.000 to MP 24.500 for 0.208 miles	3103729.9	CUNI
4	4100381	Roadway Reconstruction and Bridge Replacement	NM 434, MP 17.240 to MP 19.660 for 2.377 miles	10829377.61	CMOR
4	41010404101110	Roadway Rehabilitation and Roadway Reconstruction	NM 518, MP 11.600 to MP 24.000 for 12.322 miles	6369428.53	CSMG
4	4101250	Roadway Rehabilitation and Roadway Reconstruction	I-25, MP 442.100 to 448.500 for 6.366 miles	6046748.1	CCOL
4	4101210	Bridge Rehabilitation	NM 283, MP 1.340 to MP 3.020 for 0.446 miles	799501.62	CSMG
4	4101220	Bridge Rehabilitation	I-25 at MP 387.960, MP 440.000 and MP 450.150 for 0.293 miles	1337229.74	CCOL

4	4101090R	Fencing (Game Fence) and Signalization	I-25, MP 450.264 to MP 455.149 for 4.792 miles		2953317.33	CCOL
4	4100320	Bridge Replacement, Roadway Recon.	NM 104, MP 63.321 to 65.209 for 0.576 miles		5294662.4	CSMG
5	S100100	Bridge Rehabilitation	I-25 / St. Francis Drive Interchange for 0.335 miles.		6290414.45	CSFE
5	C0101290	Miscellaneous	US 285, at MP 255.060, Clines Corners Patrol Yard, NM 41, MP 5.537 to MP 56.127 for 0.590 miles.	Located in Torrance, County.	881887.33	CTOR
5	5100660	Bridge Replacement	I-25, MP 293.22 to MP 294.620 for 1.402 miles.		5537650.64	CSFE
5	5100160	Bridge Replacement	I-40/US 285 Interchange for 3.394 miles.		8657792.89	CSFE
5	5100411	Roadway Reconstruction	I-40/NM 344 Interchange for 3.200 miles.		11567836.19	CTOR
5	5100940	Bridge Rehabilitation	NM 68/Este Es Road Intersection		1128633.16	CSFE
5	5100990R	Signalization	I-40, MP 238.000 to MP 239.240 for 1.240 miles		906953.44	CTAO
5	5100810	Bridge Replacement	I-25/NM14 (Cerrillos Road) Interchange, MP 276.944 to MP 278.224 and NM 14, MP 46.044 to MP 46.270 for 1.201 miles		3774369.99	CTOR
5	S100140	Roadway Reconstruction	US 64, MP 57.870 to MP 60.000 for 2.131 miles		21804086.77	CSFE
5	F100110	Roadway Reconstruction	I-25 at MP 286.830 for 0.085 miles		11272962.67	CSJN
5	S100311	Bridge-Rehabilitation	I-25 at MP 288.300 for 0.158 miles		703963.6	CSFE
5	S100380	Bridge Rehabilitation	I-40, MP 233.705 to MP 239.428 for 5.470 miles		982852.12	CSFE
5	5101180	Roadway Rehabilitation	US 550 at MP 148.556 and MP 150.850 and US 64 at MP 35.600 for 0.210 miles		5210760.14	CTOR
5	F100115	Bridge Rehabilitation	NM 95 at MP 0.444 for 0.185 miles		1711911.8	CSJN
5	5100794R	Bridge Rehabilitation	NM 344, MP 0.218 to MP 0.557 for 0.339 miles		999923.94	CRIO
5	5101200	Roadway Reconstruction, Signalization, Lighting			581101.39	CSFE

5	5100820	Roadway Reconstruction and Signalization (Flashing Beacon)	US 64, MP 2.800 to MP 3.800 for 1.000 miles	1633435.72	CSJN
5	5100440	Roadway Recon, Signalization, Lighting	NM 30, MP 7.150 to 7.610 for 0.464 miles	3706513.47	CRIO
5	S100420	Bridge Rehabilitation	I-25 West Frontage Rd, MP 4.978 to MP 5.023 for 0.045 miles	336755.78	CSFE
5	5100177	Bridge Rehabilitation, Roadway Rehabilitation	US 550, MP 169.438 to MP 169.562 for 0.124 miles	348275.02	CSJN
5	S100350	Bridge Rehab, Roadway Rehab, Lighting	FL 4777 (Guadalupe St.), MP 1.380 to MP 1.640 for 0.208 miles	1931547.65	CSFE
5	5100450	Roadway Reconstruction, Bridge Rehab	NM 41, MP 46.221 to MP 55.543 for 9.369 miles	21942710	CSFE
5	5100920	Roadway Rehab, Lighting, Signalization	NM 68, MP 41.700 to MP 44.148 for 2.448 miles	5199936.5	CTAO
5	S100450	Bridge and Roadway Rehabilitation	US 84/285 at MP 174.900, MP 188.800 and MP 188.700; NM 502 at MP 11.000 for 0.310 miles	3912567.8	CSFE
6	6100781	Roadway New Construction	US 491, MP 36.962 to MP 42.427 for 5.465 miles.	15064561.84	CSJN
6	6100551	Bridge Replacement	NM 4, MP 17.538 to MP 18.319 for 0.781 miles.	2278905.39	CSDV
6	6100783	Roadway New Construction	US 491, MP 15.03 to MP 37.00	81210890.87	CMCK
6	6100223	Roadway Reconstruction	I-40/NM 122 Interchange for 4.000 miles	7110513.42	CMCK
6	6101130	Bridge Rehabilitation and Erosion Control Measures	I-40, MP 4.400 to MP 5.400 for 1.000 miles	1096681.15	CMCK
6	6100828	Bridge Rehabilitation	US 550 at MP's 20.799, 22.714, 24.632 and 52.719 for 0.183 miles	634338.95	CSDV
6	9900717	Safety (High Friction Surface Treatment)	I-40, MP 16.700 to MP 17.200	507978.42	CMCK
6	6100850	Roadway Reconstruction, Signalization and Lighting	NM 564, MP 2.070 to MP 3.310 for 1.240 miles	2872336.54	CMCK
6	6100640	Roadway Rehabilitation	I-40, MP 108.890 to MP 111.920 for 3.030 miles	7389785.16	CCIB

6	6100221	Roadway Recon., Bridge Replacement, Ramp Recon.	I-40/NM 124 Interchange at MP 96.500 for 0.602 miles	13303175.71	CCIB
6	6100826	Bridge Replacement, Roadway Recon	NM 602, MP 24.069 to MP 24.296 for 0.235 miles	4197121.01	CMCK
6	61009106100 911	Roadway Reconstruction, Bridge Replacement	NM 6, MP 0.272 to MP 18.475 for 18.203 miles	33216521.6	CVAL
6	6100827	Bridge and Roadway Rehabilitation	I-40, MP 78.300 to MP 79.700 for 1.400 miles	3130971	CCIB
				691793701.8	

District	Control Number	Project Description	Termini	Revised Contract Amount	County
1	1100900	Roadway Rehabilitation	I-25, MP 88.800 to 91.989 for 3.189 miles.	\$14,262,000.70	CSIE
1	1101051	Bridge Rehabilitation	I-25, at MP 117.630 and I-25L-00012 at MP 0.170	\$2,380,463.80	CSOC
1	1100510	Bridge Replacement	NM 549, MP 23.400 to MP 24.400 for 1.000 miles.	\$5,292,496.80	CLUN
1	1101050	BRIDGE REHABILITATION	I-25 at MP 75.800 and MP 80.160 and NM 187 at MP 19.860	\$3,780,806.82	CSIE
1	9900362	Safety	I-10, MP 134.080 to MP 134.820 for 0.740 miles	\$285,635.54	CDON
1	1100870	Bridge Rehabilitation	I-10, MP 26.730 to MP 26.770 for 0.040 miles	\$1,455,128.00	CHID
1	9900365R	Safety (Striping)	I-10, MP 0.000 to MP 146.000 for 146.000 miles	\$2,022,026.33	CVAR
1	9900366R	Safety (Striping)	I-25, MP 0.000 to MP 174.899 for 174.899 miles	\$2,708,217.37	CVAR
1	1100470	Roadway Reconstruction	US 70, MP 148.318 to MP 149.277 for 0.959 miles.	\$5,473,867.06	CDON
1	1100830	Bridge Rehabilitation	I-10, MP 140.500 to MP 143.000 for 1.378 miles	\$7,360,051.56	CDON
1	1101020	Roadway Rehabilitation	I-25, MP 35.619 to MP 39.000 for 3.381 miles	\$2,204,570.94	CDON
1	1100840	Bridge Replacement and Roadway Reconstruction	US 60, MP 136.025 to MP 136.427 for 0.402 Miles	\$2,680,478.24	CSOC
1	1100620	Roadway Rehabilitation, Roadway Reconstruction and Traffic	I-10, MP 146.000 to MP 164.345 for 18.345 miles	\$11,155,513.29	CDON
1	1100890	Roadway Rehabilitation	I-25, MP 92.000 to MP 105.000 for 13.000 miles	\$5,344,505.10	CSIE
1	1100610	Roadway Rehabilitation	I-10, MP 20.000 to MP 25.076 for 5.076 miles	\$3,620,146.90	CHID
1	9900705	Lighting	I-25, MP 78.700 to MP 79.800 for 1.100 Miles	\$255,489.14	CSIE
2	2100900	Roadway Rehabilitation	US 54, MP 55.350 to MP 64.040 for 8.690 miles	\$4,720,453.88	COTE
2	2101331	Bridge Rehabilitation	US 60 at MP 381.570 for 0.029 miles.	\$600,537.22	CCUR
2	2100026	Roadway Rehabilitation	US 70, MP 335.990 to US 285, MP 115.576 for 2.025 miles	\$1,900,865.35	CCHA
2	2100910	Roadway Reconstruction	NM 529, MP 22.109 to MP 31.130	\$13,527,387.27	CLEA
2	2100140	Roadway Reconstruction	US 60/70/84, MP 389.000 to MP 390.500 for 1.500 miles	\$9,829,960.83	CCUR
2	2101840	Bridge Rehabilitation	US 380, MP 102.000 to MP 102.600 for 0.600 miles	\$313,673.80	CLIN
2	2101280	Roadway Rehabilitation	NM 176, MP 0.000 to MP 9.981	\$9,740,319.07	CLEA
2	2100881	Roadway Rehabilitation	US 380, MP 190.800 to MP 195.000	\$1,414,463.23	CCHA
2	2100940	Bridge Rehabilitation	FL-4685-P, MP 8.00 to MP 8.200	\$2,558,625.20	CCHA
2	2100870	Bridge Rehabilitation	US 54, MP 204.900 to MP 205.300 for 0.402 miles	\$718,785.95	CGUA
2	210025021C	Roadway New Construction	US 54, MP 130.000 to MP 146.000 for 15.912 miles.	\$30,794,531.21	CLIN
2	2101810	Bridge Rehabilitation	US 82 at MP 91.350 and MP 105.690 for 1.200 miles	\$1,088,335.08	CEDD
2	2101370	Roadway Rehabilitation	US 285, MP 0.000 to MP 11.000 for 11.000 Miles	\$3,902,476.36	CEDD
2	2101880	Bridge Rehabilitation	NM 24, MP 46.800 to MP 47.800 for 1.000 miles	\$374,902.22	CCHA

6	9900367	Safety	I-40, MP 103.842 to MP 104.075 for 0.233 miles	\$357,671.58 CCIB
6	6101030	Erosion Control Measures	NM 197 at MP 0.630 (Rio Puerco)	\$756,796.33 CSDV
6	6100824	Bridge-Rehabilitation	NM 602, MP 1.487 to MP 1.682	\$557,585.68 CMCK
6	6100650	Roadway Rehabilitation	I-40, MP 62.997 to MP 68.996 for 6.010 miles	\$6,679,859.76 CMCK
6	6100716	Roadway Rehabilitation	I-40, MP 35.077 to 38.186 for 3.109 miles.	\$5,001,505.85 CMCK
6	6101100R	Structures	I-40, MP 91.100 to MP 96.100 for 5.000 miles	\$3,001,603.02 CCIB
6	6100721	Roadway New Construction	NM 12, MP 5.000 to 5.800 for 0.800 miles	\$4,300,639.53 CCAT
6	6100470	Bridge Replacement	NM 610, MP 1.550 to MP 1.590 for 0.042 miles	\$2,188,330.23 CMCK
6	6100289R	Stockpiling	Various Locations in District 6	\$1,149,541.16 CCAT
				\$308,796,741.22

Statewide Transportation Improvement Program (STIP)

- Statewide Transportation Improvement Program (STIP) is a 4-Year Fiscally Constrained Plan based on available Federal Funds
 - http://dot.state.nm.us/content/dam/nmdot/STIP/Official_STIP.pdf
 - Federal funding is eligible for use on
 - Interstates (I-10, I-25 & I-40)
 - National Highway System (US designated Routes)
 - Major State, County or Local roads designated as major collector or arterial routes
 - Core Funding Programs
 - National Highway Preservation Program (NHPP)
 - Surface Transportation Program (STP)
 - Highway Safety Improvement Program (HSIP)
 - Rail-Highway Grade Crossings Program
 - Congestion, Mitigation and Air Quality (CMAQ)
 - Metropolitan Planning
-

Project Prioritization

- NMDOT manages the programming, design, and development of projects which makes up the STIP
- The STIP includes any project that utilizes any amount of federal-aid funding and projects that are regionally significant to either the State or the local Metropolitan Planning Organization (MPO).
- Prioritization of projects (in the STIP or not) based on the following criteria:
 - safety/fatalities
 - roadway condition
 - economic development
 - congestion mitigation
- NMDOT staff prioritize projects by balancing the available funding between statewide needs and local priorities.

Construction Gaps

Fiscal Year 2017 Approved Operating Budget Compared to Estimated Need

		Budget	Needs	Gap
Roadway Reconstruction and Rehabilitation	Estimated need of 11.9 billion over the next 20 years or an average of \$595 million per year. Performing 75 percent of the estimated requirement would address the most critical needs.	\$ 288,500,317	\$ 446,250,000	\$ 157,749,683
Bridge Preventive Maintenance and Minor Rehabilitations	Preventive maintenance and minor rehabilitation projects on existing inventory.	\$ 11,561,462	\$ 31,713,980	\$ 20,152,518
Bridge New Construction/Bridge Rehabilitation - No Added Capacity	Major rehabilitation projects on bridges that require deck replacements and minor superstructure and substructure work.	\$ 16,520,978	\$ 26,200,000	\$ 9,679,022
Bridge Replacements - Added & No Added Capacity	Structurally deficient bridges that have met their service life. Based on optimal spending with a goal of satisfying all needs in a 10 year period. Need to replace approximately 27 bridges per year based upon an average 50 year design life at an average cost of 3.1 million per bridge.	\$ 33,452,481	\$ 127,800,000	\$ 94,347,519
Major Bridge Projects	Functionally obsolete bridges and other capacity projects such as major intersections. Based on estimated cost of Rio Bravo. Currently a backlog of \$287 million in FO projects.	\$ -	\$ 25,000,000	
Total		\$ 350,035,238	\$ 656,963,980	\$ 306,928,742

*FY18 Data is in the process of being finalized, data will be available by November 2017

ESTIMATION of OBLIGATION LIMITATION for FFY2018

CORE PROGRAMS											
	National Highway Performance Program (NHPP)	Surface Transportation Program (STP)	Highway Safety Improvement Program (HSIP)	Rail-Highway Crossing Program	Congestion Mitigation & Air Quality (CMAQ)	Metropolitan Planning	Transportation Alternatives Program (TAP)	National Highway Freight Program (NHFP)	State Planning & Research	Section 154 & 164 Penalties	CORE PROGRAMS TOTAL
2018 FHWA Revised APPORTIONMENT NOTICE (dated June 28, 2017)	\$ 224,946,562	\$ 112,506,842	\$ 22,970,884	\$ 1,714,674	\$ 11,791,549	\$ 1,662,600	\$ -	\$ 11,155,262		\$ -	\$ 386,748,373
*Section 164	\$ (6,622,099)	\$ (3,046,610)								\$ 9,668,709	
*Transportation Alternatives Program (TAP)	\$ (2,104,827)	\$ (5,634,708)					\$ 7,739,534				
*2% SPR	\$ (2,425,540)	\$ (4,398,281)	\$ (447,007)		\$ (238,711)			\$ (225,429)	\$ 7,734,967		
Border State Infra. Set Aside		\$ (2,412,708)									
<i>Subtotal</i>	\$ 213,794,098	\$ 97,014,537	\$ 22,523,878	\$ 1,714,674	\$ 11,552,838	\$ 1,662,600	\$ 7,739,534	\$ 10,929,833	\$ 7,734,967	\$ 9,668,709	\$ 384,335,669
NHPP Funds Exempt from Ob limit	\$ (6,265,932)										\$ (6,265,932)
Border State Infra. Set Aside		\$ 2,412,708									\$ 2,412,708
Rec Trails Set Aside							\$ (1,429,831)				\$ (1,429,831)
<i>Subtotal</i>	\$ 207,528,166	\$ 99,427,245	\$ 22,523,878	\$ 1,714,674	\$ 11,552,838	\$ 1,662,600	\$ 6,309,703	\$ 10,929,833	\$ 7,734,967	\$ 9,668,709	\$ 379,052,614
Assumed Obligation Authority	92.8%	92.8%	92.8%	92.8%	92.8%	92.8%	92.8%	92.8%	92.8%	92.8%	92.8%
Available Obligation Limitation	\$ 192,586,138	\$ 92,268,483	\$ 20,902,158	\$ 1,591,217	\$ 10,721,034	\$ 1,542,893	\$ 5,855,405	\$ 10,142,885	\$ 7,178,050	\$ 8,972,562	\$ 351,760,826

ESTIMATION of OBLIGATION LIMITATION for FFY2018

CORE Program	National Highway Performance Program (NHPP)	Surface Transportation Program (STP)						Highway Safety Improvement Program (HSIP)	Rail Highway Grade Crossing Program	Congestion Mitigation and Air Quality (CMAQ)	Metropolitan Planning	State Planning & Research (SPR)	Transportation Alternatives Program (TAP)				National Highway Freight Program (NHFP)	Section 154 Penalty Transfer NHTSA	TOTAL			
Estimated Fed. Ob. Limit.	\$182,886,138	\$80,029,460						\$20,902,158	\$1,591,217	\$10,721,034	\$1,842,893	\$7,178,060	\$5,655,405				\$10,142,885	\$6,972,562	\$349,521,633			
Funding Category	NHPP	STPL	STPS	STPR	STPF	STSO	SB51	HSIP	NRS	RRP	CMAQ	CMAQ- EI Pass	PL	Planning	Research	TAPL	TAPS	TAPR	TAPF	NHFP		
Fed. Ob. Limit.	\$ 192,586,138	\$ 17,673,925	\$ 18,004,552	\$ 11,481,257	\$ 40,712,615	\$ 2,176,449	\$ 2,338,993	\$20,902,158	\$795,600	\$785,809	\$8,576,827	\$2,144,207	\$1,542,883	\$5,383,537	\$1,794,512	\$1,097,657	\$ 1,118,228	\$ 711,617	\$ 2,927,703	\$10,142,885	\$8,972,562	\$381,760,234
Debt Service	\$ (92,178,100)	\$ (764,098)	\$ (354,607)	\$ (3,782,456)	\$ (2,246,543)						\$ (88,799)											\$ (96,404,891)
STPL DS Taken directly from MRVPO on next page		\$ (784,098)																				\$ (784,098)
Adj. Fed. Ob. Limit	\$ 100,408,038	\$ 16,145,729	\$ 17,639,855	\$ 7,698,802	\$ 38,466,072	\$ 2,176,449	\$ 2,238,993	\$ 20,902,158	\$ 795,600	\$ 785,809	\$ 8,508,028	\$ 2,144,207	\$ 1,542,883	\$ 5,383,537	\$ 1,794,512	\$ 1,097,657	\$ 1,118,228	\$ 711,617	\$ 2,927,703	\$ 10,142,885	\$ 8,972,562	\$251,591,445
Federal Share	85.44%	85.44%	85.44%	85.44%	85.44%	80.00%	85.44%	90.00%	90.00%	90.00%	85.44%	85.44%	85.44%	80.00%	80.00%	85.44%	85.44%	85.44%	85.44%	85.44%	80.00%	
State / Local	14.56%	14.56%	14.56%	14.56%	14.56%	20.00%	14.56%	10.00%	10.00%	10.00%	14.56%	14.56%	14.56%	20.00%	20.00%	14.56%	14.56%	14.56%	14.56%	14.56%	20.00%	
Ob. Limit w/ Match	\$ 117,618,772	\$ 18,897,155	\$ 20,645,898	\$ 8,887,479	\$ 45,021,152	\$ 2,720,632	\$ 2,820,544	\$ 23,224,630	\$ 884,010	\$ 884,010	\$ 9,657,898	\$ 2,609,605	\$ 1,905,820	\$ 6,729,422	\$ 2,243,141	\$ 1,284,711	\$ 1,308,788	\$ 833,119	\$ 3,428,919	\$ 11,871,354	\$ 9,969,514	\$293,344,191
Consultant Program					\$ (20,000,000)			\$ -			\$ -		\$ -									\$ (20,000,000)
Suspense	\$ (8,000,000)		\$ (2,000,000)	\$ (67,659)	\$ (3,865,112)	\$ (1,267,229)																\$ (16,000,000)
Bridge Maint Program	\$ (12,546,857)				\$ -	\$ (1,453,333)																\$ (14,000,000)
Border State Infra. Set Aside							\$ (2,520,544)															\$ (2,520,544)
Rail Study (800750)							\$ (100,000)															\$ (100,000)
Penalty Transfer HSIP Safety Projects Program HSIP SW Price Agreement Program Rail Safety Projects Planning TAP Selection CMAQ to MRVPO Sub-Allocated Programs								\$ (12,724,620)	\$ (884,010)	\$ (884,010)			\$ (5,833,476)	\$ (1,805,620)		\$ (1,284,711)	\$ (1,308,788)	\$ (833,119)	\$ (3,428,919)	\$ (11,871,354)		\$ (25,969,514)
	\$ 96,872,105	\$ 18,897,155	\$ 18,645,898	\$ 8,319,820	\$ 21,256,040	\$ (0)	\$ 0	\$ 0	\$ 0	\$ 0	\$ (4,124,422)	\$ (0)	\$ 2,589,605	\$ 6,729,422	\$ 2,243,141	\$ -	\$ -	\$ -	\$ -	\$ -	\$ (0)	\$176,273,183

These estimates are based on the most current information available on the date this document was prepared. Amounts shown are susceptible to change based on project cost overruns, project close-out information, program audit information, revised federal spending estimates, federal rescissions and redistributions. Changes in one federal funding category, or in one NMDOT District, are likely to have subsequent effects to other program categories and to other districts.

ESTIMATION of OBLIGATION LIMITATION for FFY2018

AVAILABLE for PERCENTAGE DISTRIBUTION

NHPP	\$	96,972,105
STPS	\$	18,645,898
STPR	\$	8,919,820
STPF	\$	21,356,040
	\$	<u>145,893,862</u>

	D1	EMPO	D2	D3	MRMPO	D4	D5	D6	Total
	\$ 24,758,188		\$ 28,434,714	\$ 30,754,426		\$ 19,943,691	\$ 25,633,552	\$ 16,369,291	\$ 145,893,862
	D1	EMPO	D2	D3	MRMPO	D4	D5	D6	Total
NHPP	\$ 16,456,166		\$ 18,899,863	\$ 20,441,720		\$ 13,256,087	\$ 17,037,999	\$ 10,880,270	\$ 96,972,105
STPS	\$ 3,164,209		\$ 3,634,085	\$ 3,930,555		\$ 2,548,894	\$ 3,276,084	\$ 2,092,070	\$ 18,645,898
STPR	\$ 1,513,694		\$ 1,738,473	\$ 1,880,298		\$ 1,219,339	\$ 1,567,212	\$ 1,000,804	\$ 8,919,820
STPF	\$ 3,624,120		\$ 4,162,292	\$ 4,501,853		\$ 2,919,371	\$ 3,752,256	\$ 2,396,148	\$ 21,356,040
Subtotal	\$ 24,758,188	\$ -	\$ 28,434,714	\$ 30,754,426	\$ -	\$ 19,943,691	\$ 25,633,552	\$ 16,369,291	\$ 145,893,862
STPL		\$ 751,745			\$ 18,913,508				\$ 19,665,253
STBO	\$ (0)		\$ (0)	\$ (0)		\$ (0)	\$ (0)	\$ (0)	\$ (0)
CMAQ		\$ 2,509,605			\$ 5,833,476				\$ 8,343,081
2018 Target	\$ 24,758,188	\$ 3,261,350	\$ 28,434,714	\$ 30,754,426	\$ 24,746,984	\$ 19,943,691	\$ 25,633,552	\$ 16,369,291	\$ 173,902,196

These estimates are based on the most current information available on the date this document was prepared. Amounts shown are susceptible to change based on project cost overruns, project close-out information, program audit information, revised federal spending estimates, federal rescissions and redistributions. Changes in one federal funding category, or in one NMDOT District, are likely to have subsequent effects to other program categories and to other districts.