

Infrastructure Planning and Development Division (IPDD)

Legislative Finance Committee

Senator George K. Muñoz, *Chair*

Representative Nathan P. Small, *Vice Chair*



New Mexico
Department of Finance
and Administration

April 17, 2024

Infrastructure Planning and Development Division (IPDD)

HB 232 created the Infrastructure Planning and Development Division (IPDD) within the Department of Finance and Administration to enhance the infrastructure and capital outlay process through a centralized Division.

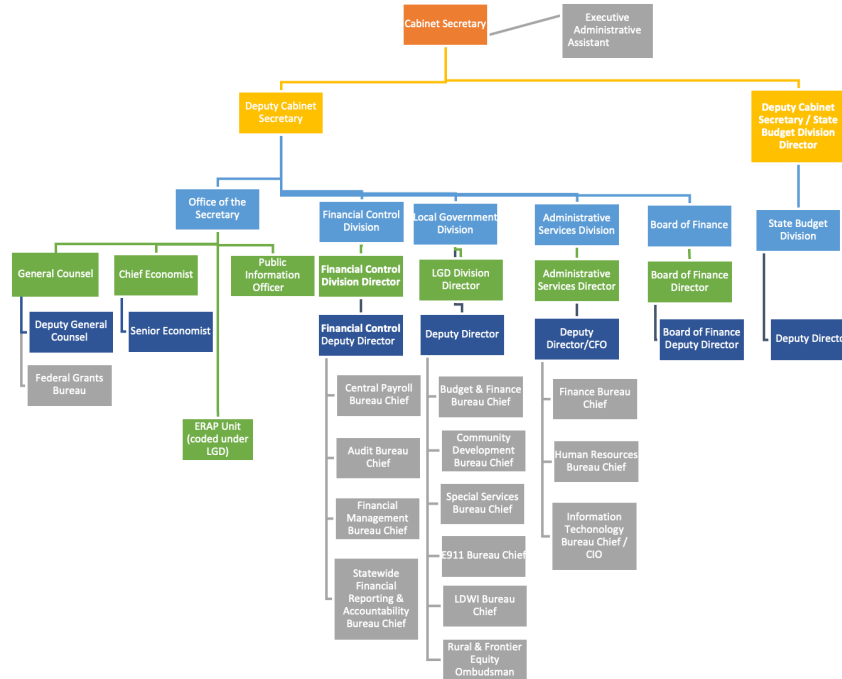


What will the Division do?

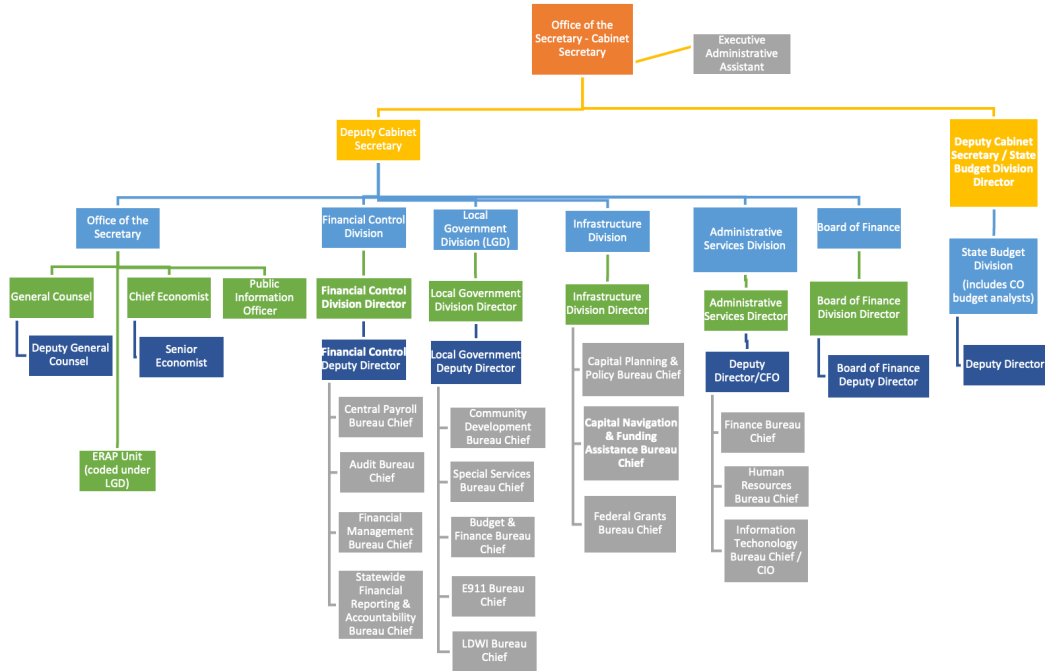
- IPDD will track spending more accurately, ensure projects are funded appropriately, and provide public-facing dashboards for transparency.
- IPDD will look for federal funding first before proceeding with state funding.
- IPDD will conduct a comprehensive revamp of the existing digital system used for capital planning and expenditures, streamlining and improving how local entities, state agencies, and the Legislature participate in the infrastructure and capital expenditure process.



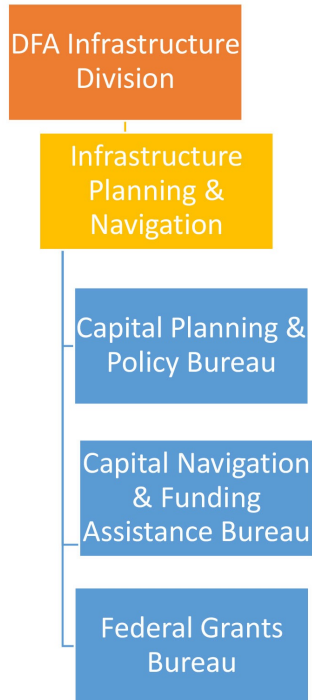
Old DFA Organizational Chart



New DFA Organizational Chart with IPDD



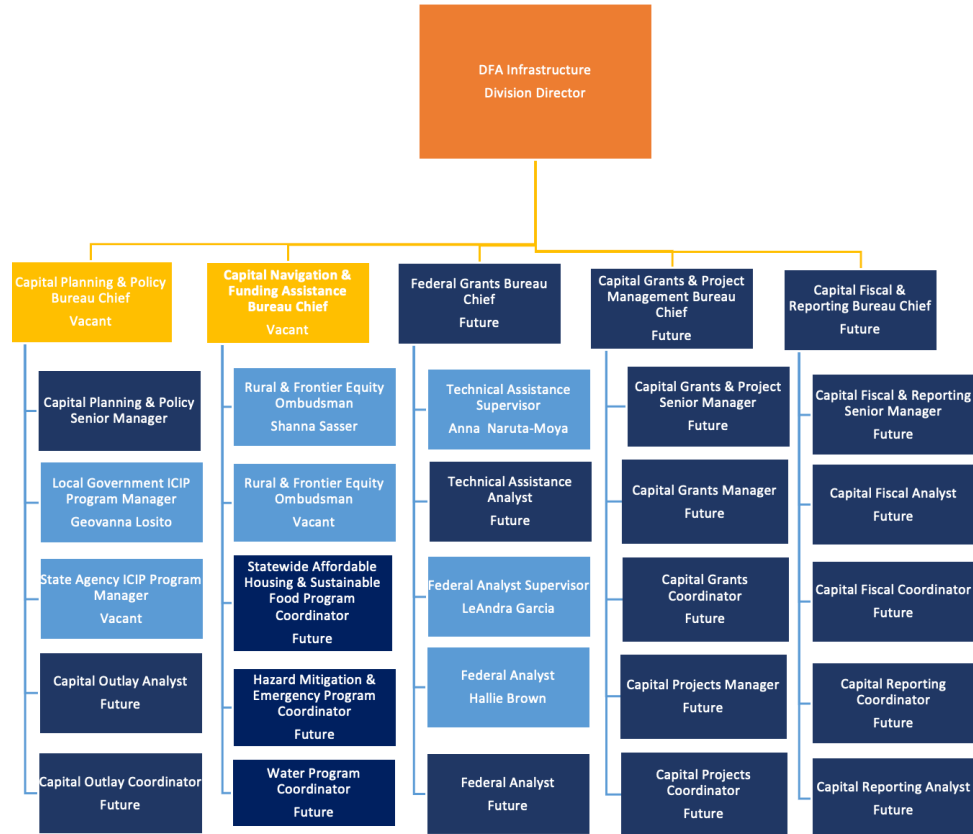
IPDD Structure Close Up



Moving Personnel and Teams

- IPDD moves certain infrastructure and capital related functions of the Local Government Division (LGD):
 - The Rural Equity Ombudsman and Local Government Infrastructure Capital Improvement Plan functions of LGD will move to the new Division along with other short- or long-term programs and funds of other Divisions of DFA as determined by the Secretary.
 - The bill assigned IPDD the duties of aiding local governments, councils of governments, and tribal governments in identifying and accessing funding for infrastructure development from available sources and administering funding to complete capital projects and of providing guidance on project plans and development.
 - Including the Federal Grants Bureau allows the Division to identify potential federal grants, assist with the applications for grants, or provide technical assistance which collectively helps the state maximize and leverage the use federal funds.

IPDD Organizational Chart with Future Evolution



Improved Workflow

- This Division will work closely with local entities, state agencies, and the Legislature to provide planning and funding assistance for all capital projects listed on the Infrastructure Capital Improvements Plan (ICIP).
- The Division's goal is to manage the planning of all capital outlay projects successfully and to assist all entities with fully funding all capital outlay projects appropriated through Federal Bills, the Capital Appropriation Bill, the Reauthorization Bill, the General Obligation Bond Bill, the HB2 Specials related to capital and any Junior Bill.



IPDD Future Evolution

Potential Bureaus to help with securing grants, adding capacity and assist with reporting.

Capital Grants and Project Management Bureau

- The Bureau will oversee grant agreements for projects funded by capital outlay bills (federal/state), junior bills, and HB2 Specials. They will handle grant applications and agreements, easing state agencies' workload and providing a centralized process for local governing bodies. They will coordinate with the Federal Grants Bureau for matching funds and manage projects post-execution, focusing on timely completion within budget. They also assist state agencies in reviewing Notice of Obligations and approving RFPs before forwarding them for payment processing.

Capital Fiscal and Reporting Management Bureau

- The Bureau will oversee audit reviews, Uniform Funding Criteria form completion, and help entities with Executive Order compliant processes. For projects not in the mass budget upload, they will submit CAPBUDs to the Planning and Budget Management Bureau. They will receive approval Notice of Obligations from Capital Grants & Projects Management Bureau, encumber funds, process pay requests, and handle category transfer requests to the State Budget Division. They will manage project reporting in the new system, ensuring data accuracy before reporting to the Governor's office and Legislature.

