

Science, Technology and Telecommunications Committee

July 10, 2017



Disclaimer



This confidential presentation contains material non-public information. By accepting this confidential presentation, the recipient agrees to use any such information in accordance with its compliance policies, contractual obligations, and applicable Laws including Federal, Provincial, and local jurisdiction securities laws.

These presentation materials may neither be reproduced nor used in whole or in part for any other purpose, nor furnished to any person without our express written permission. While the information included herein is believed to be accurate and reliable, by delivery of this presentation, we do not make any representations or warranties, express or implied, as to the accuracy or completeness of such information. By accepting this presentation, the recipient agrees that we shall not have any liability for any representation (express or implied) contained in, or for any omissions from, this presentation or any other written or oral communications transmitted to the recipient.

The delivery of this presentation shall not, under any circumstances, create the implication that there has been no change in our affairs after such date. Certain provisions of various agreements may be summarized in this presentation, but it should not be assumed that the summaries are complete. Such summaries are qualified in their entirety by reference to the texts of the original documents.

© 2015



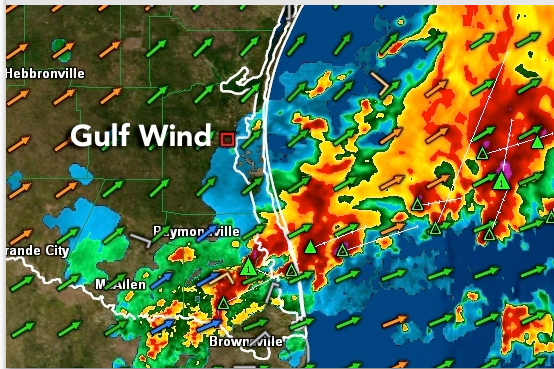
Company Overview

Core Competencies



Origination & Development

- Greenfield / Acquisition
- Meteorology and analytics
- Community support
- Utility and supplier relationships
- Transmission / Interconnection planning



Finance & Permitting

- Contract negotiation
- Project finance
- Permits / Real estate finalization
- Insurance
- Third party verification
- Hedging
- Community Relations



Construction

- Engineering
- Construction management
- Project administration
- Site Biological and Archeological monitoring and mitigation
- Environmental, Health and Safety management



Corporate Administration & Support

Community & Environmental Commitments

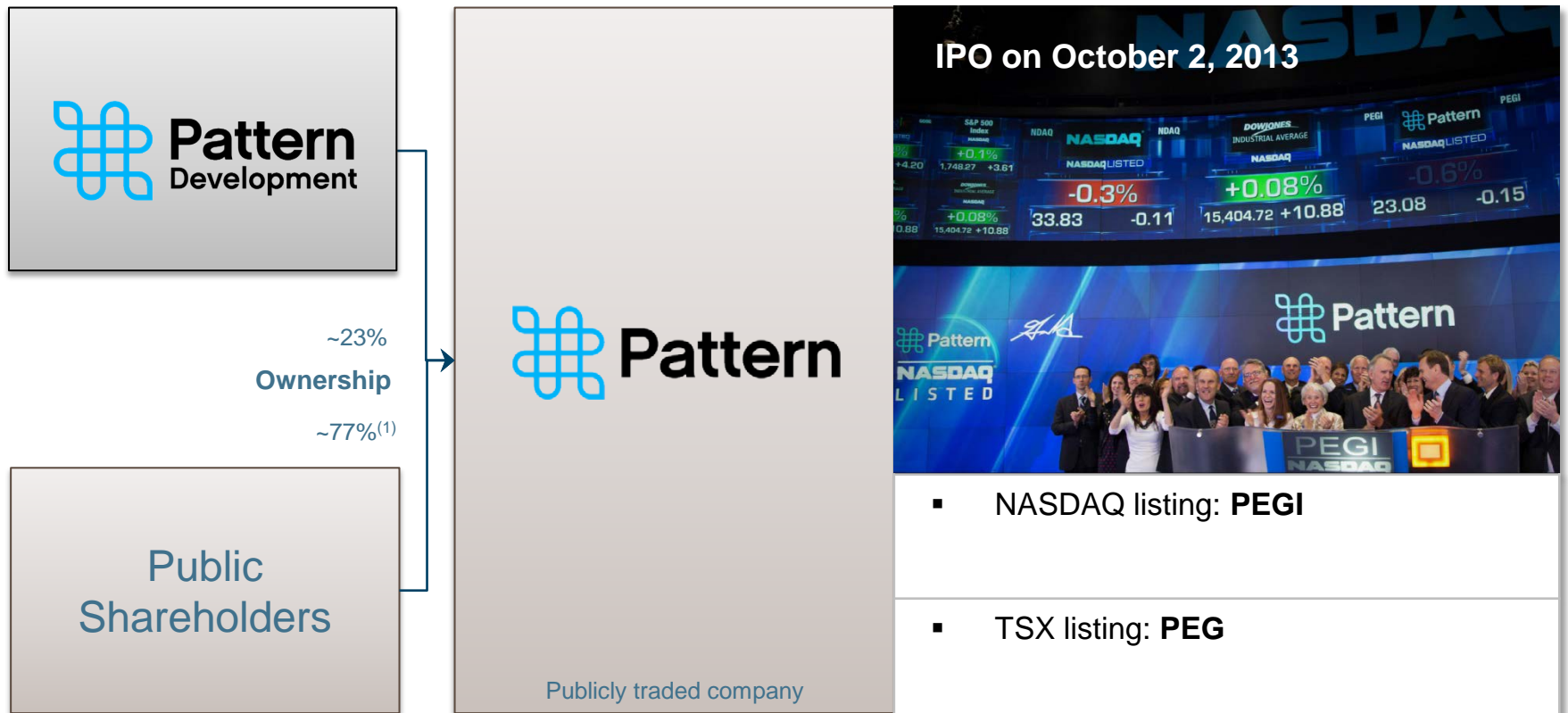


- We support the communities in our project areas
 - Ensure our projects succeed by ensuring the project area communities succeed
 - Strive to build strong relationships with landowners, local officials, and community members
 - Earn trust through communication and collaboration and work to structure our projects so benefits spread to the local communities

- We respect the land and the environment
 - Consider it our responsibility to produce and transport clean, renewable energy to consumers with the least amount of natural impact
 - Aim to exceed industry standards and be a leader in the advancement of best practices for the identification, assessment, and mitigation of our environmental impacts

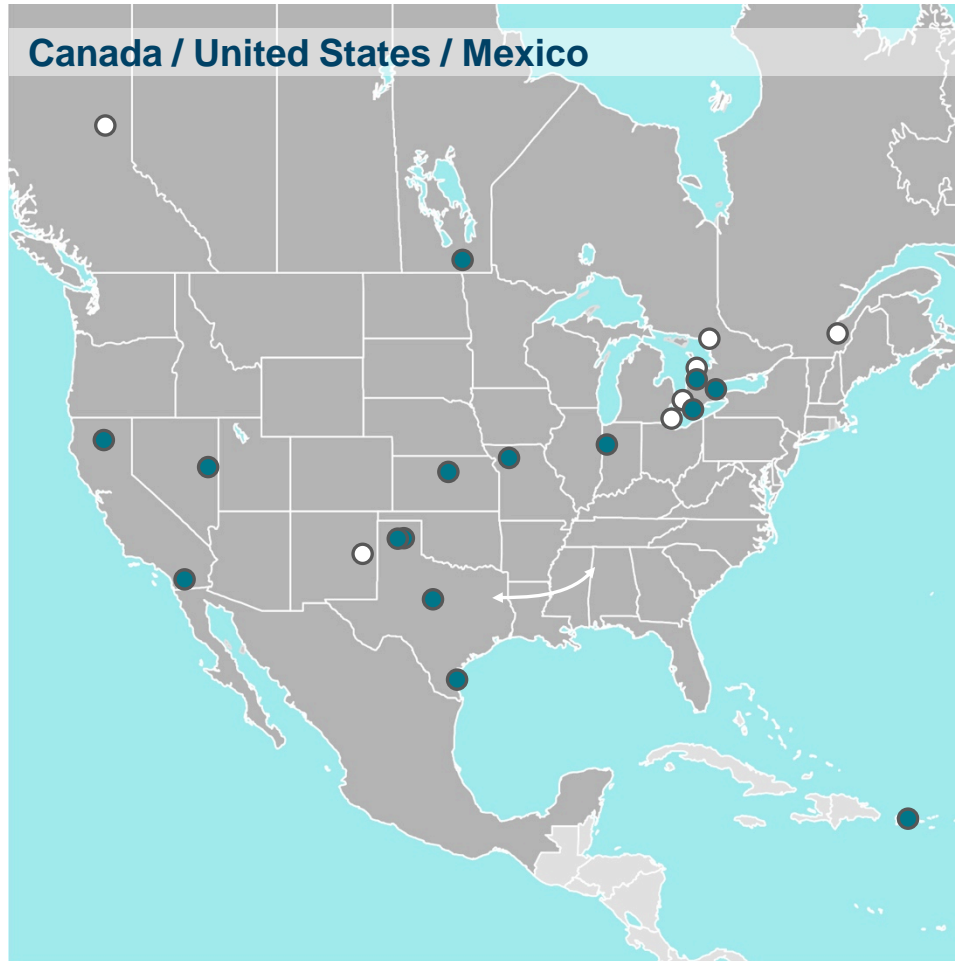


Ownership in Pattern Energy Group Inc.



(1) Represents shares held by the public shareholders as well as certain directors and members of management

Pattern Development and Pattern Energy Portfolios



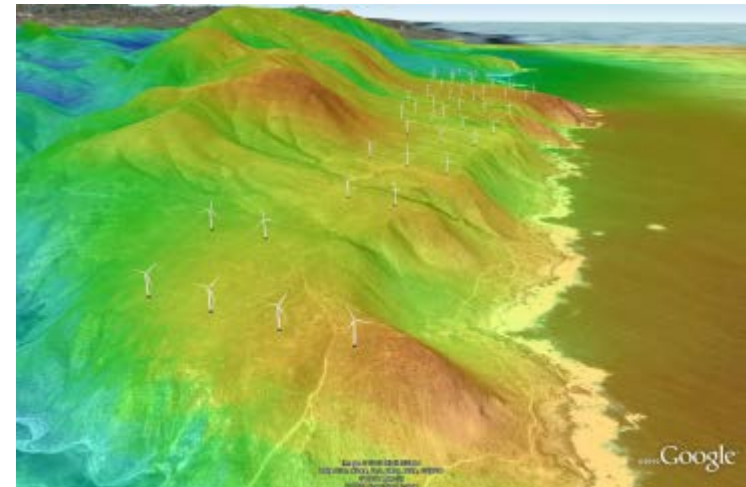
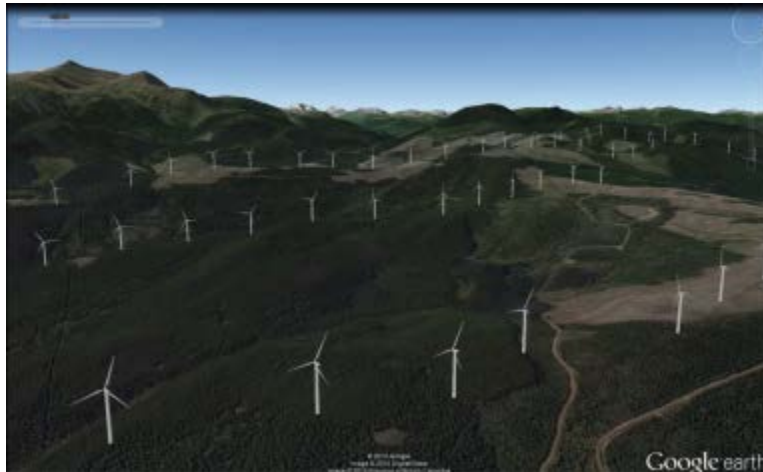


Meteorological Team

Project Mapping and Visualizations



- Meteorological team is well versed in GIS mapping and atmospheric modeling

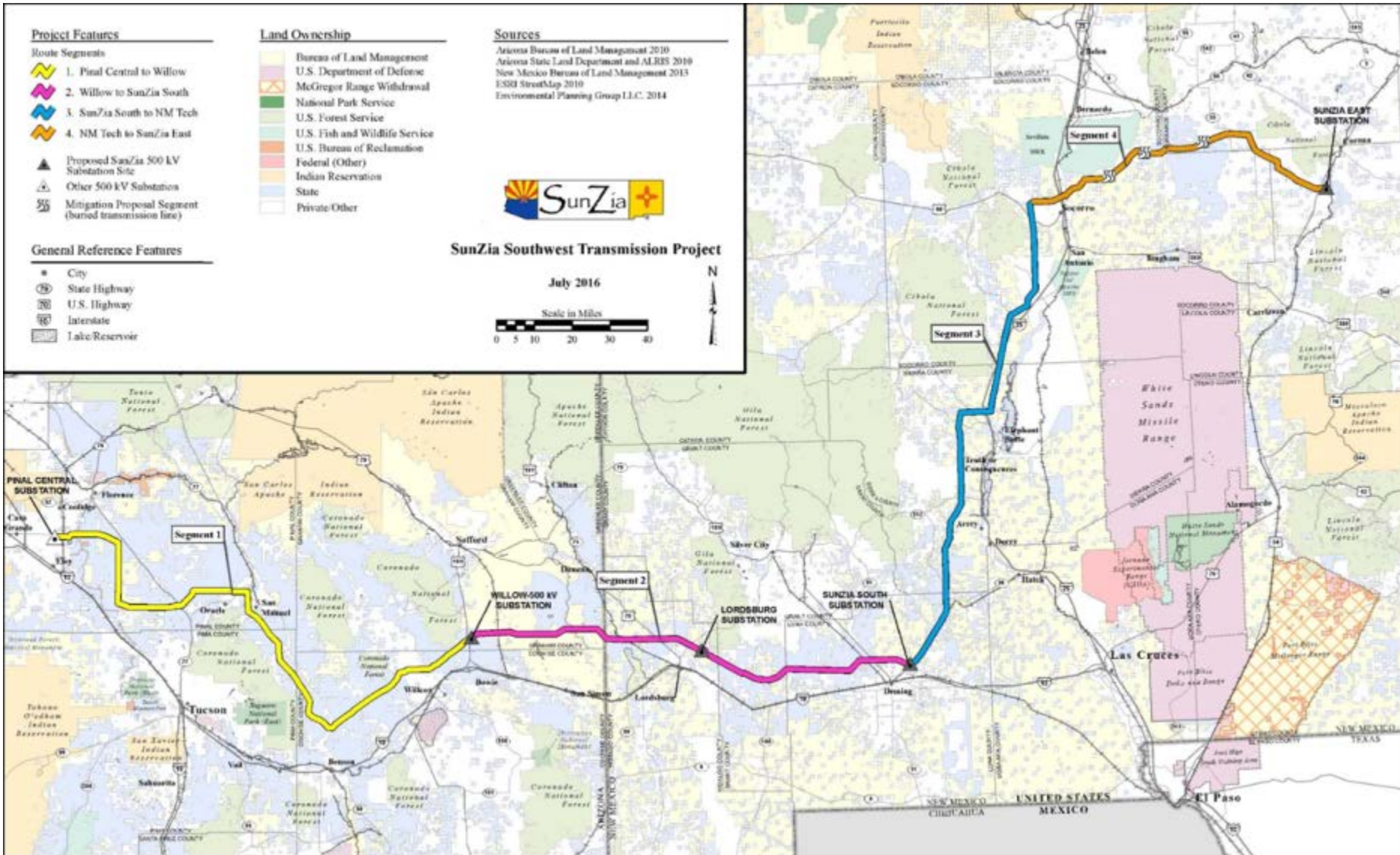


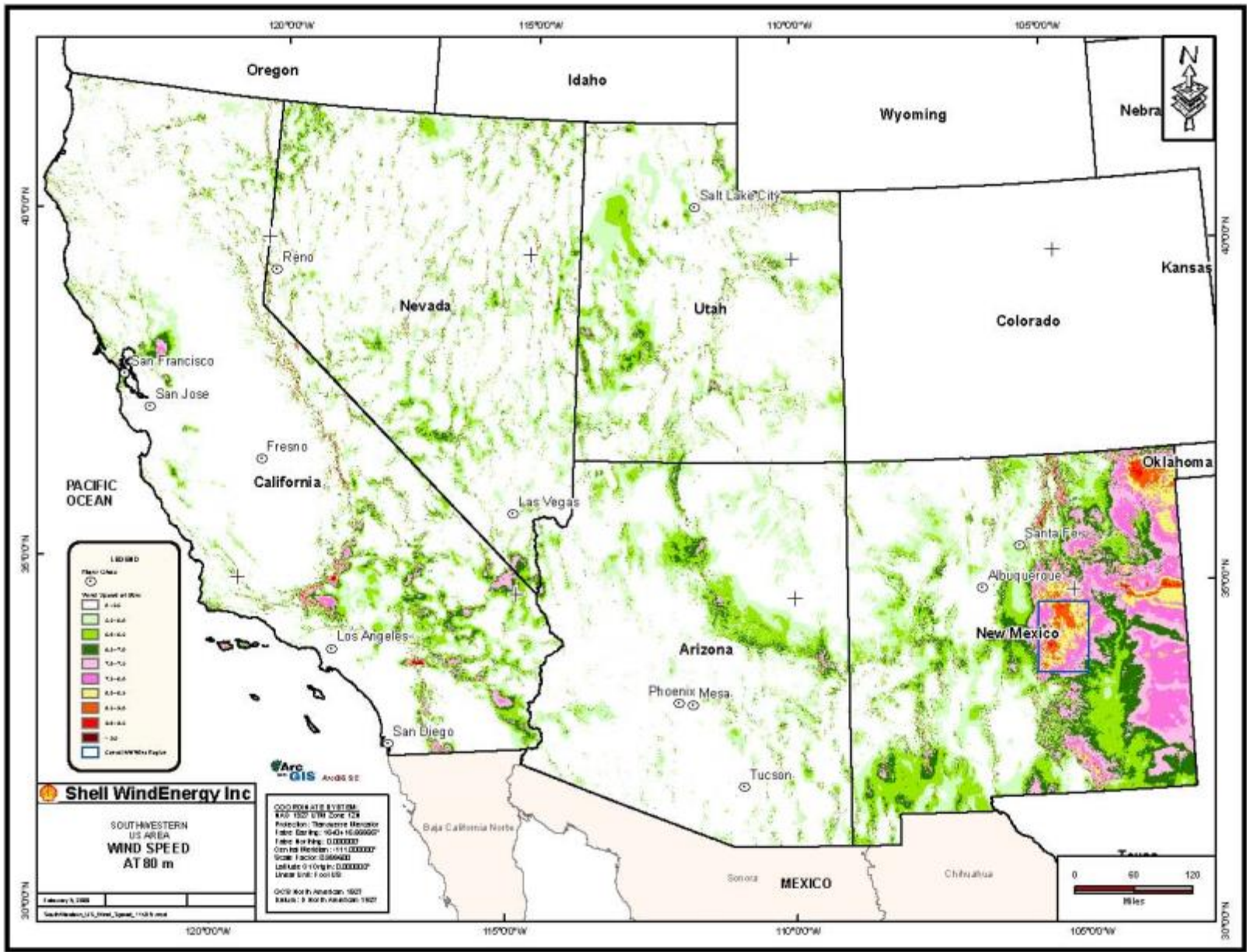
- Visualizing each project provides another level of analysis for not only the meteorological team, but also for developers and community relations



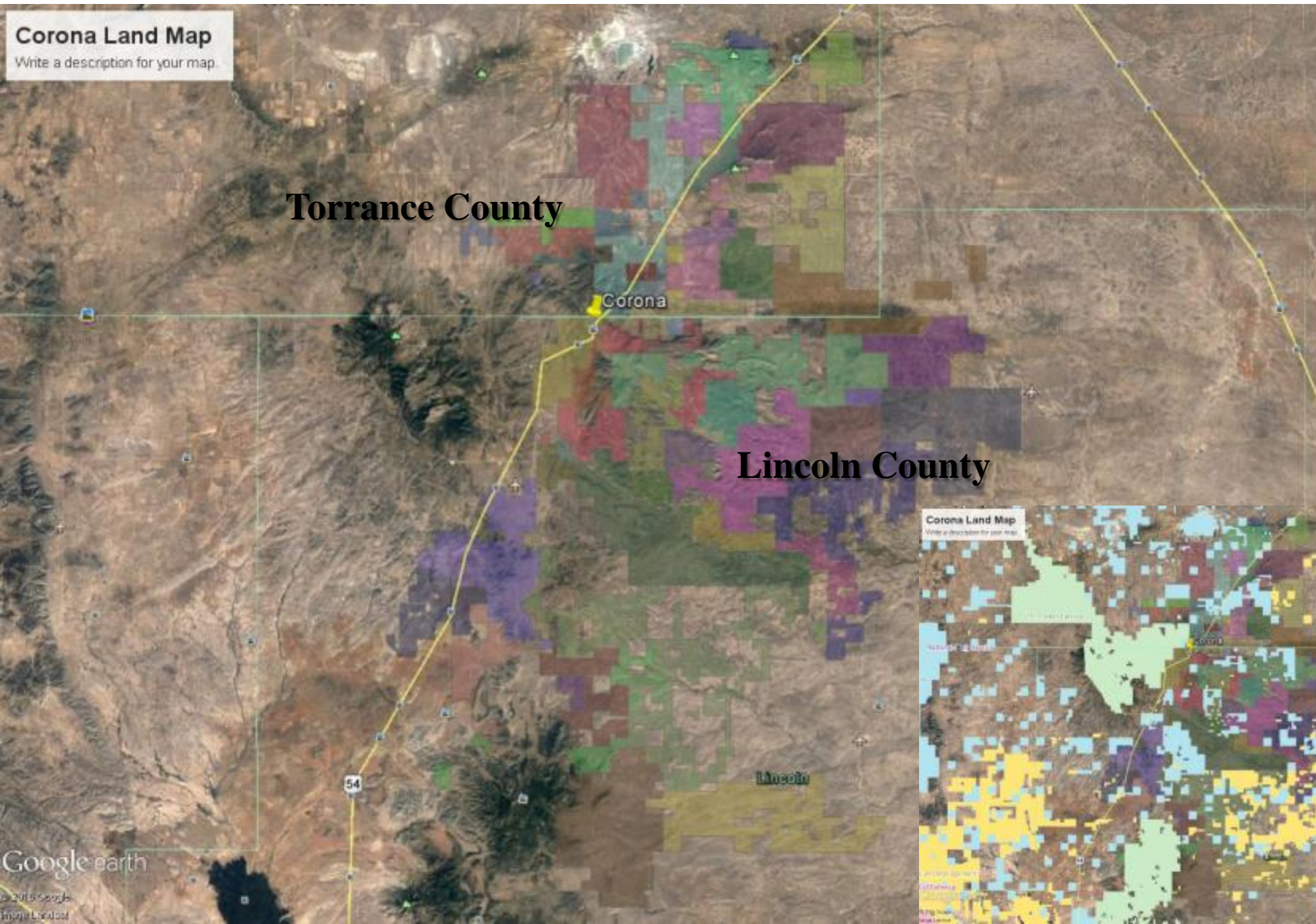
Transmission Enabled Wind

SunZia Southwest Transmission Project





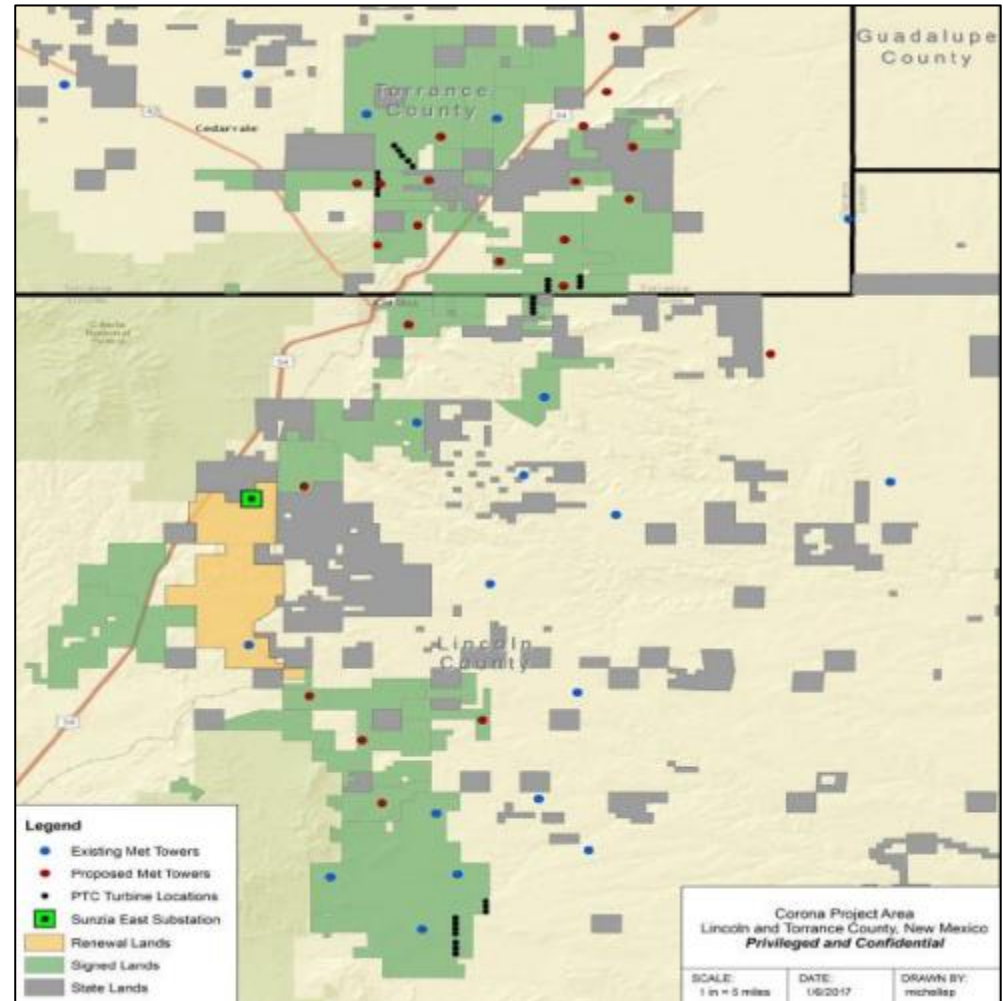
Corona Area Land (Inset with State and Federal land)



SNZ Project Status



- 1,500 MW of Land Control
- 200,000+ acres under option
- ~ 900 MW PTC qualification via “Start of Construction”
 - Initial foundations for 30 turbines
 - ~ 42,000 ft. of access roads
- Purchased turbines to allow for full PTC qualification of 1,500 MW of wind projects at SNZ project sites
- Over 5 years of wind data collected
- Installed and/or upgraded instruments on 30 met tower masts





Broadview Wind

Curry County, New Mexico

Deaf Smith County, Texas

Overview Broadview Wind

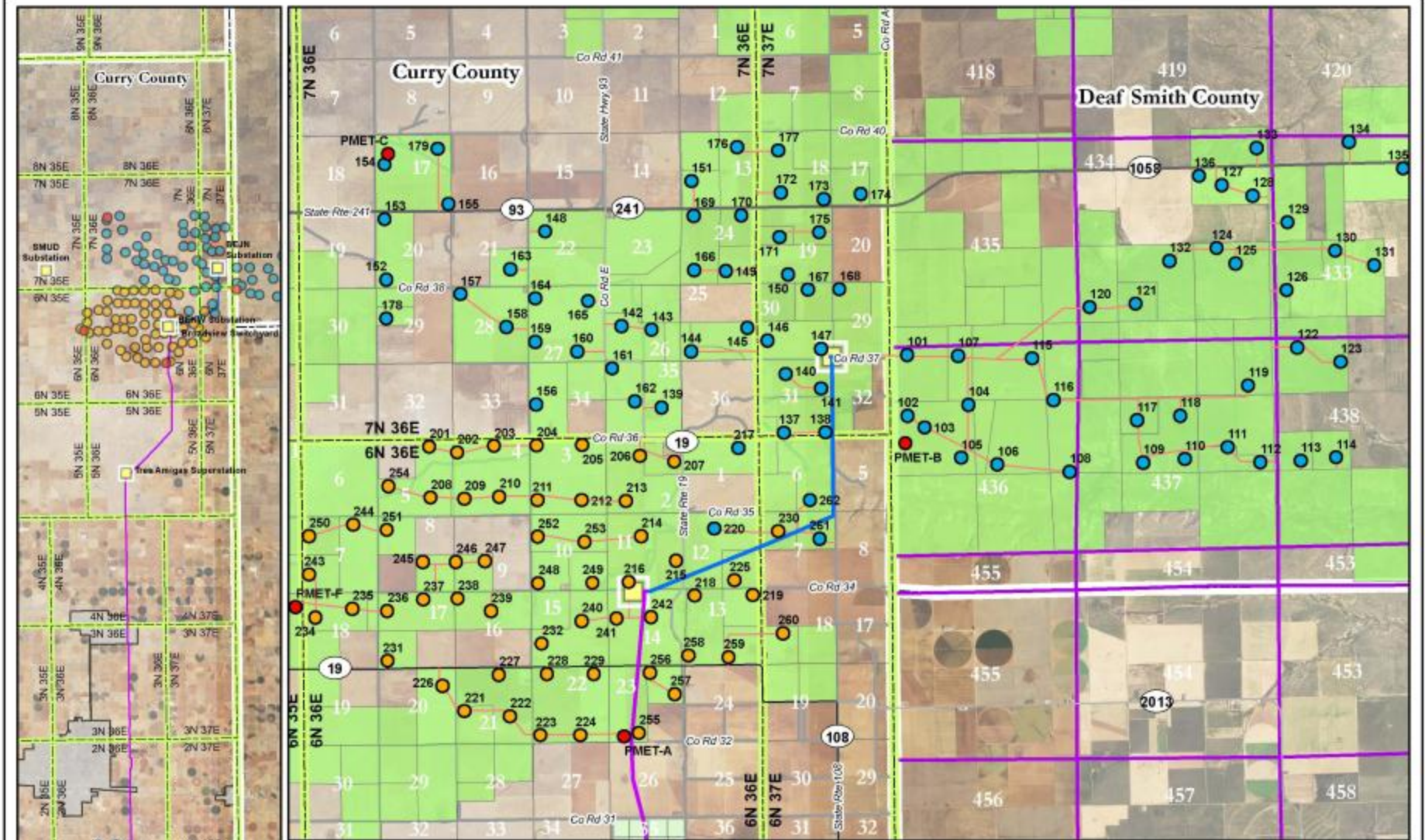


- Clean, renewable energy for 140,000 American homes
- \$92M investment in regional economy through property taxes, counties, school districts, landowner royalties, and local causes
- Overall economic impact to NM expected to be \$979.8M
- 17 to 18 permanent jobs

Key Project Information



- Total Project nameplate capacity 544 MW
 - BEJN: 181.7 MW (79 turbines planned) Q1 2017
 - BEKW: 142.6 MW (62 turbines planned) Q1 2017
 - GWEC 220 MW (96 turbines planned) Q2 2018
- Siemens 2.3 MW turbines with 108 m rotor
- Connecting with Western Interconnect LLC (formerly Tres Amigas “Phase Zero” transmission line) at 345kV to Blackwater Substation with delivery into California Market (CAISO)
- Transmission service through the Public Service New Mexico (PNM) and Arizona Public Service (APS) transmission system
- Executed two 20 year power sale agreements with Southern California Edison (SCE) for BEJN and BEKW
- Executed one 25 year power purchase agreement with Sacramento Municipal Utility District (SMUD)



BEKW & BEJN Wind Farm - Curry Co., New Mexico & Deaf Smith Co., Texas

Geopolitical	Turbines	Transportation	Parcels	Centerline	
<ul style="list-style-type: none"> Townships (NM) Section (NM) Counties 	<ul style="list-style-type: none"> ● BEKW ● PMET-A, B, C, F ● BEJN 	<ul style="list-style-type: none"> Proposed Access Roads Roads 	<ul style="list-style-type: none"> Leased Land 	<ul style="list-style-type: none"> BEJN Western Interconnect 	

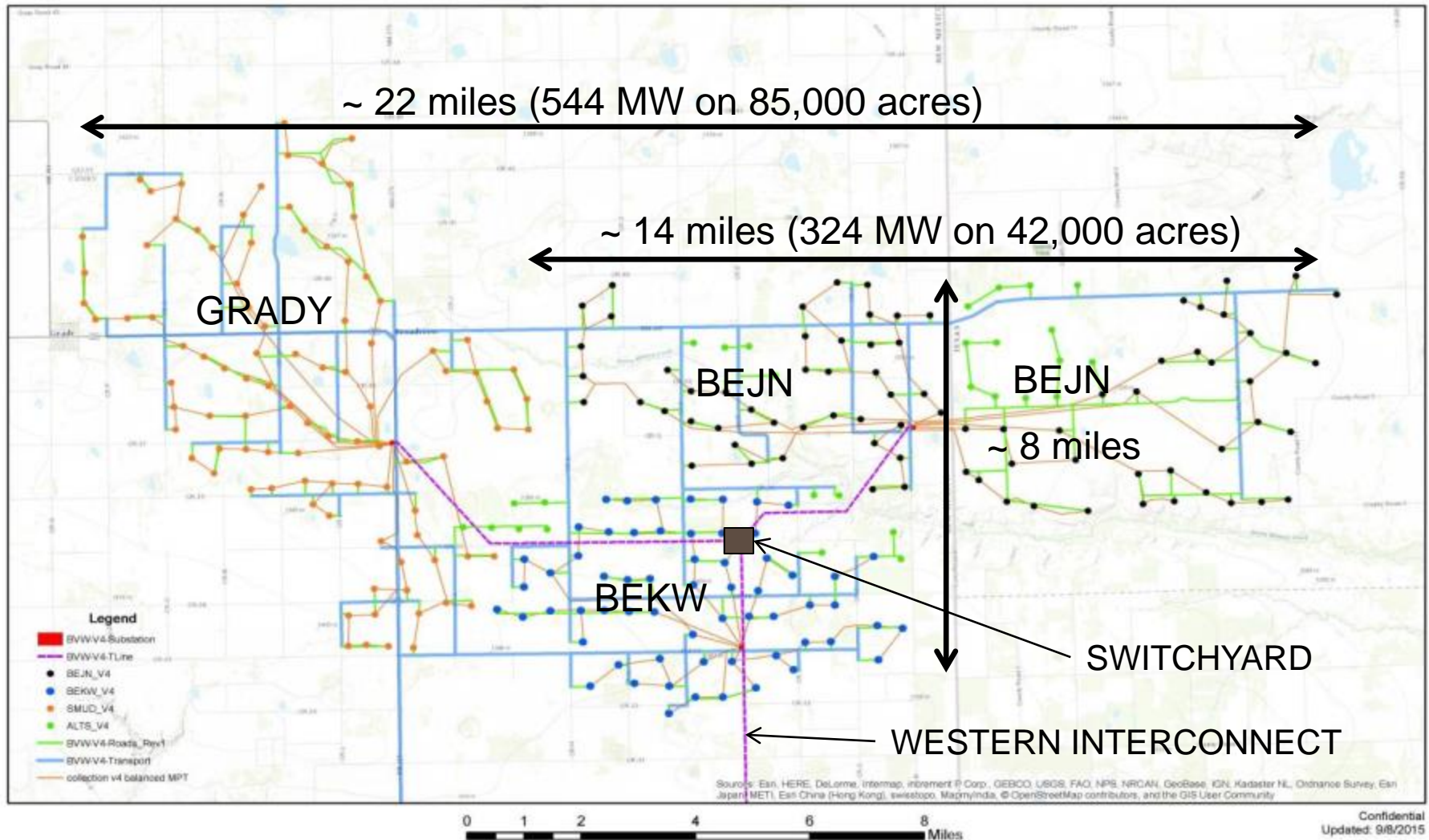
0
0.75
1.5
3
4.5
6
Miles

Date: 3/23/2016

BROADVIEW ENERGY PROJECTS



Broadview Energy: Curry County, New Mexico and Deaf Smith County, Texas



















SIEMENS

Ø=3.96M
T-L







5 t

5 t

5 t

10 t

10 t

10 t

10 t

10 t

LIEBHERR LA 1300

BIGGE

LIEBHERR

BIGGE















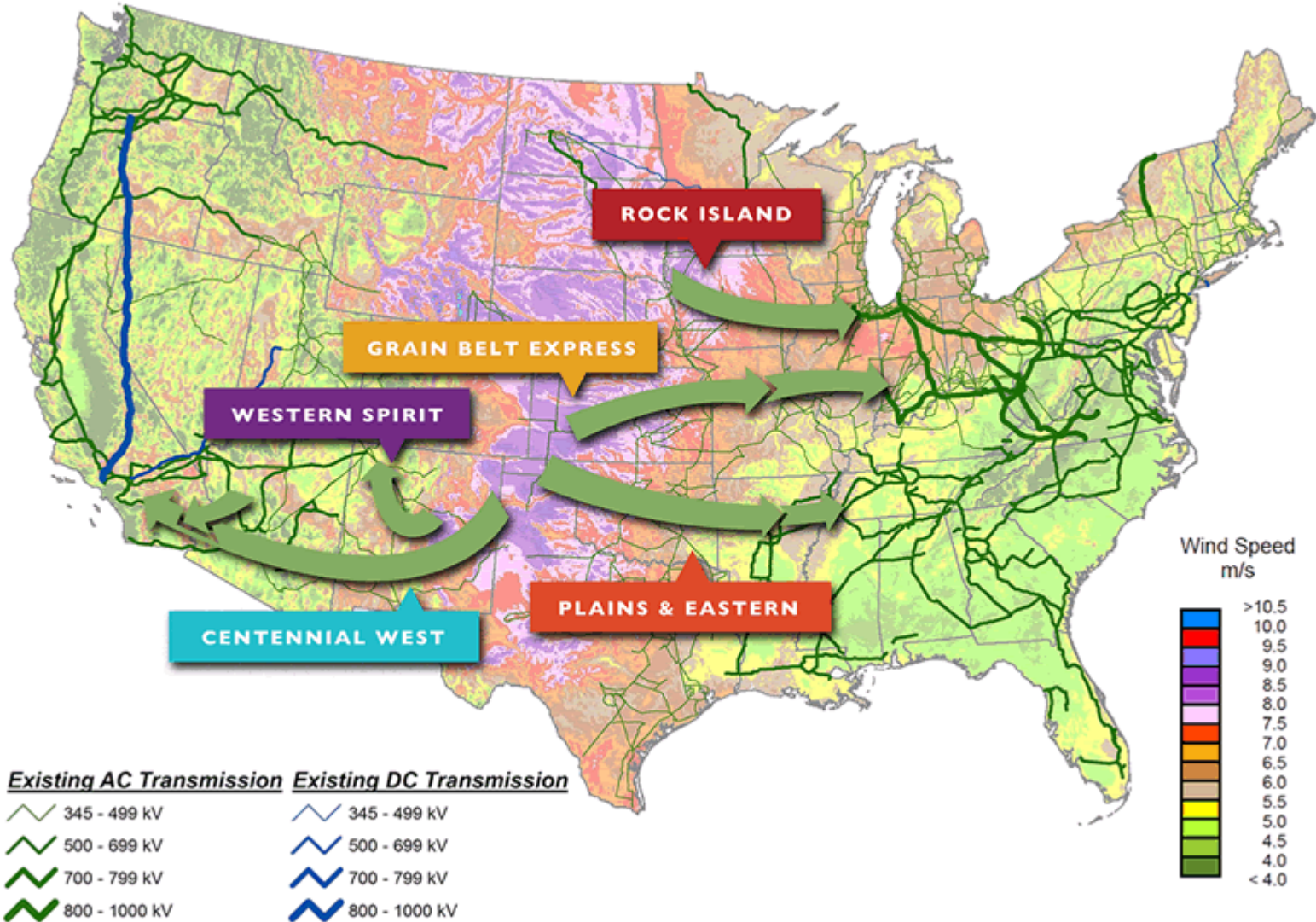




New Mexico Transmission Projects



Clean Line Independent Transmission Projects





Ben Givens
Facility Manager, Broadview
Pattern Energy Group, Inc.
Phone: (575)366-3059

Email: ben.givens@patternenergy.com

Loralee Hunt
Manager, Project Development
Pattern Development
Phone: (575)317-1574

Email: loralee.hunt@patternenergy.com