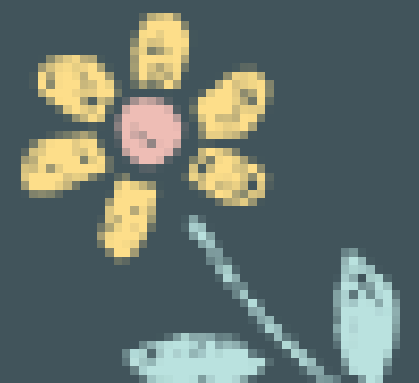
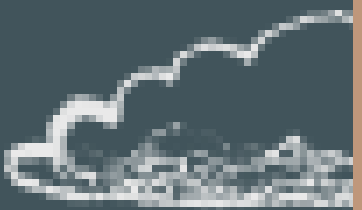
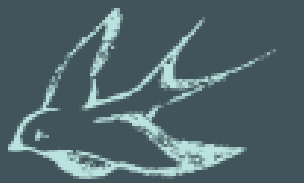
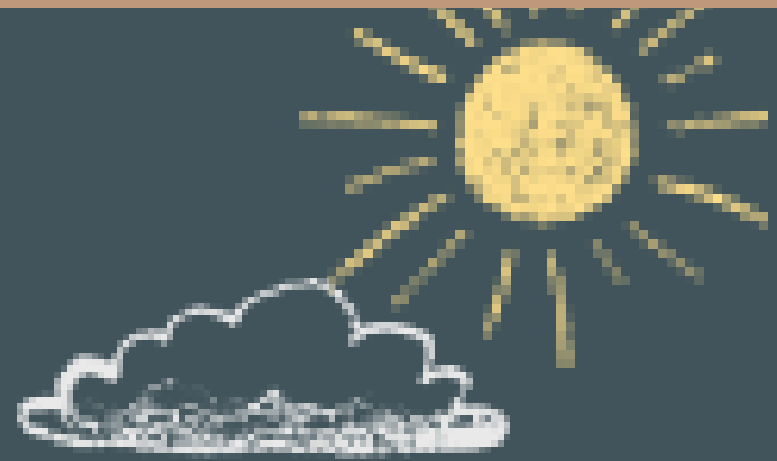


Alternative

University High School

Lucie Hall, Principal





Every student has potential, but not every student has opportunity!

Why are we in Designation?



We are evaluated based on the following:

- 4 year Graduation Rate (SAUs)
- SAT & ASR Scores
- Access Scores
- Attendance
- College & Career Readiness

THE SCHOOL DISTRICT REPORT CARD FOR **University High**

OVERVIEW INDICATORS

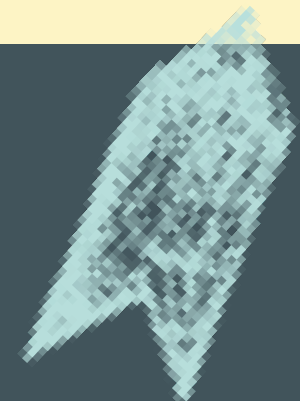
SCHOOL YEAR
2023-2024

TOTAL ENROLLMENT
165

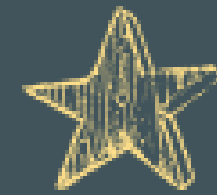
GRADES SERVED
9TH - 12TH

DISTRICT
ROSWELL INDEPENDENT SCHOOLS

ESSA SCHOOL DESIGNATION
MRI.GRAD

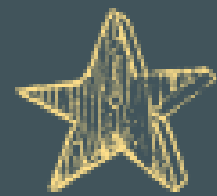


4 Year Graduation Rate



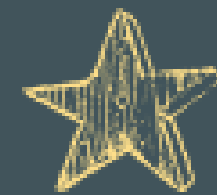
As an Alternative School:

We don't take many true freshmen- so we have low SAUs



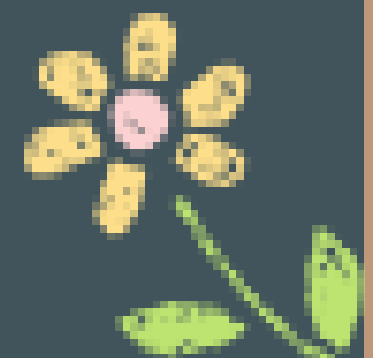
Graduation Rate is Calculated using SAUs

Shared Accountability Units mean that when a student graduates from a NM High School, we share the student with every NM High School they attended.



But our mission is:

To give students an opportunity to graduate but this does effect who we accept.



Other Factors our Designation



Attendance

Our students have not been successful at other schools and they do not think that attendance is important.



SAT Scores

Since the majority of our students come to us as Juniors or Seniors- we inherit there SAT and ASR Scores



Access Scores

If a student has not exited EL services by 8th grade, statistically it is not likely they will.



Where We Shine is CTE_____



Engaging Hands On Instruction

If student's see value in what is being taught, they will come to school.



Helping students find their passion

- Cosmetology
- Electrical
- Health Careers
- Human Services
- Hospitality & Tourism



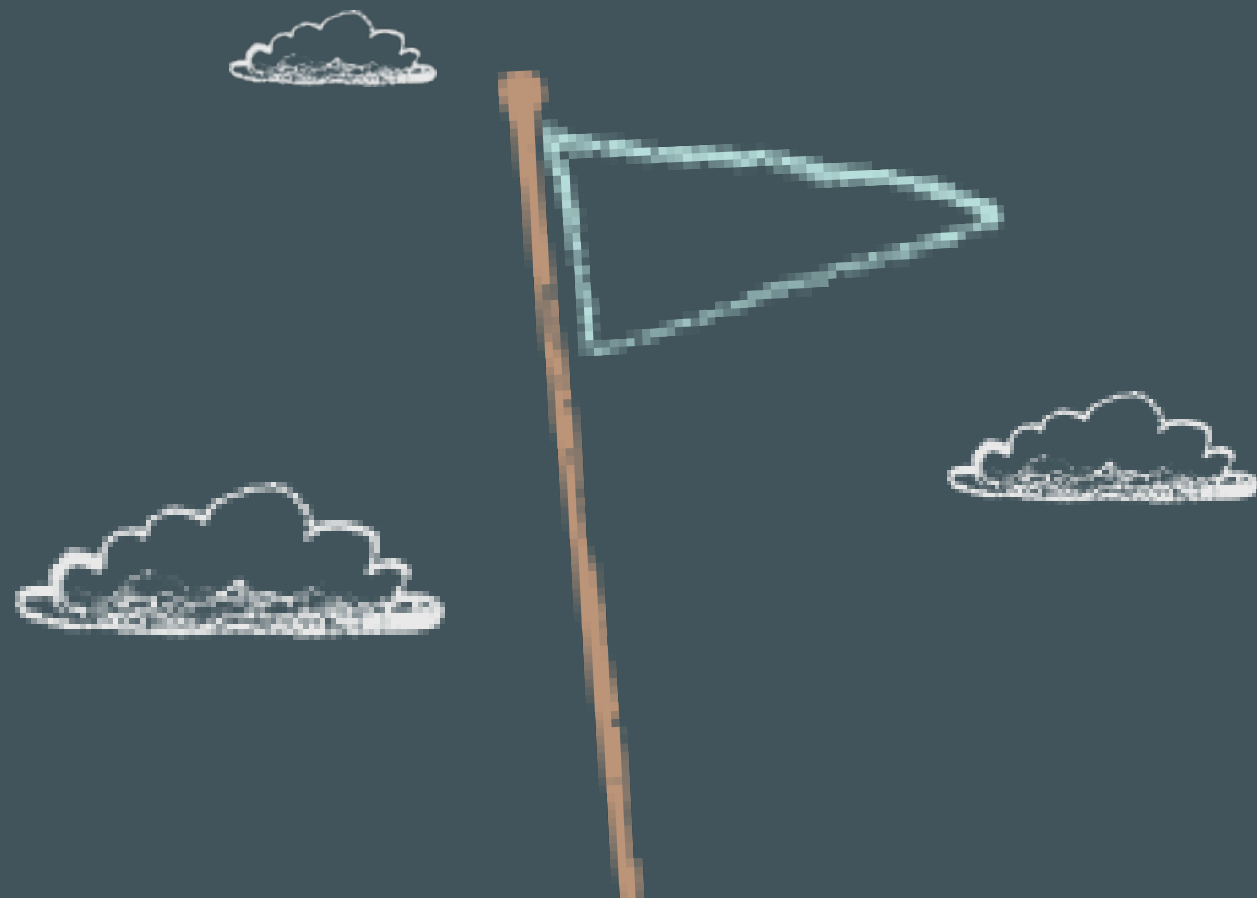
Opportunity to Earn Career Certifications

- OSHA 10
- CPR & First Aid
- Barbasol
- XCel & Word



Graduation

- Cords for our CTE Completers
- Community Capstone Projects



Community Capstones



Accountability



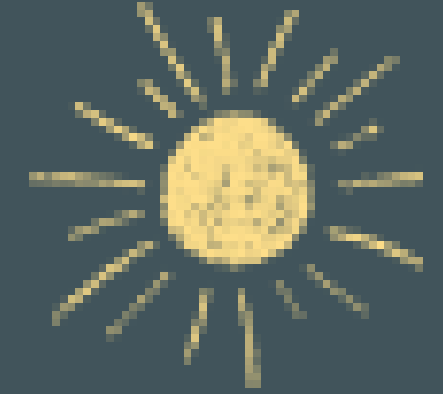
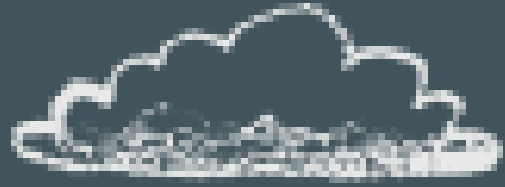
Credit Recovery Capstones

Next semester we will start to move away from APEX as our only form of credit recovery and begin using our existing CTE courses to help students to recover credit



SOAR

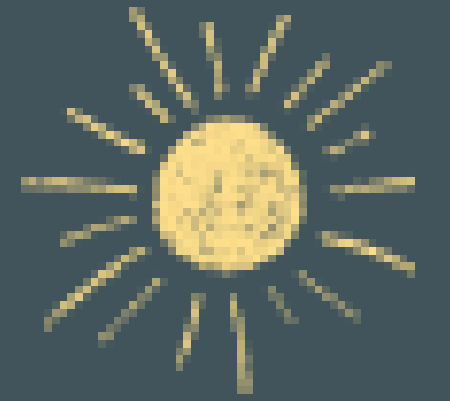
- SOAR is an accountability program
- contacts parents and students when they are missing assignments
 - contacts parents on student attendance



Thank you!

Questions?





Why choose UHS



Benefit from a smaller school setting



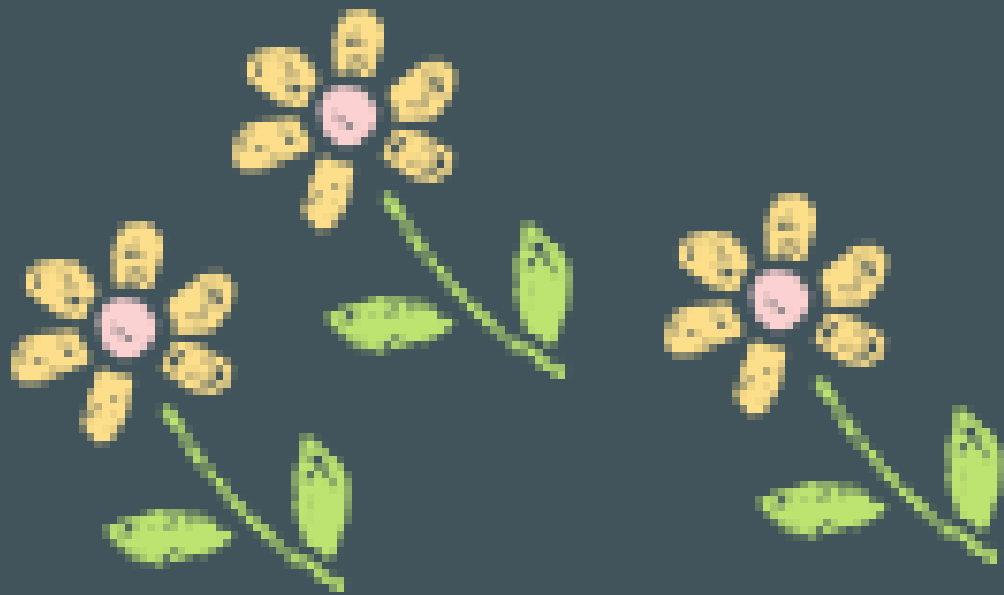
Interested in the trades



Not a perfect student, but a willing student



Not a perfect attendance, but regular attendance



Student Mailing Address [REDACTED] Roswell, NM 88203 [REDACTED]			Class Of: 2025 Graduation Date:			Lucie Hall, Principal		
Roswell Independent School District								
Crs Title	S1 Crd	S2 Crd	S3 Crd	Crs Title	S1 Crd	S2 Crd	S3 Crd	GPA Summary
24-25 University High School				21-22 Roswell High School				9th Grade GPA Semester 1: 1.250 Semester 2: 1.313 Crd Attempt: 16.00 Crd Earned: 8.00 10th Grade GPA Semester 1: Semester 2: Crd Attempt: 0.00 Crd Earned: 0.00 11th Grade GPA Semester 1: 1.375 Semester 2: 1.500 Crd Attempt: 8.00 Crd Earned: 4.00 12th Grade GPA Semester 1: 1.417 Semester 2: 1.375 Crd Attempt: 10.00 Crd Earned: 5.50 Cum. Adjust. GPA: 1.353 Cum. Unadjust. GPA: 1.353 Total Credits Attempt: 34.00 Total Credits Earned: 17.50 Class Rank: 51 out of 54
English 09 Credit	D	.500		Chemistry I B		F	.000	
Recovery	C	.500		English 10 A	F	.000		
New Mexico History	C	.500		English 10 B		F	.000	
CREDIT RECOVERY				Geometry A	F	.000		
World History CREDIT C		.500		Geometry B		F	.000	
RECOVERY				German I A	C	.500		
				German I B		F	.000	
				Science of Large	B	.500	B	.500
23-24 Roswell High School				Agriculture Animals				
Art I A	D	.500		World History and				
Art I B			F	Geography A		F	.000	
Band Jazz Stage 12 A A	.500			World History and				
Band Jazz Stage 12 B			A	Geography B				
Band Marching 12 A A	.500							
Band Symphonic 12 B			A					
Biology I A	F	.000		20-21 Roswell High School				
Biology I B			F	Algebra I A	B	.500		
English 10 A	F	.000		Algebra I B		D	.500	
English 10 B			F	Band Instr. Ensm. 09 AF		.000		
Geometry A	D	.500						
Geometry B			B					
Health			F					
Modern US History A	F	.000						
New Mexico History	F	.000						
US Government			F					
22-23 Roswell High School								
Algebra II A	F	.000						
Algebra II B			F					
Band Instr. Ensm. 11 AB	.500							
Band Instr. Ensm. 11 B			A					
Band Jazz Stage 11 A B	.500							
Band Jazz Stage 11 B			A					
Band Marching 11 A B	.500							
Band Symphonic 11 B			B					
Biology I A	F	.000						
Biology I B			F					
English 11 A	F	.000						
English 11 B			F					
Modern US History A	F	.000						
Modern US History B			D					
Science of Small	C	.500						
Agriculture Animals								
Science of Small			F					
Agriculture Animals								
21-22 Roswell High School								
Band Instr. Ensm. 10 AA	.500							
Band Instr. Ensm. 10 B			B					
Band Marching 10 A A	.500							
Band Symphonic 10 B			B					
Chemistry I A	F	.000						

RHS Student

- Shows 2025 graduate
 - Actually 2024
 - Shows 17.5 credits
 - 2 earned at UHS
 - Only 3 of credits earned @ RHS
- were in core classes

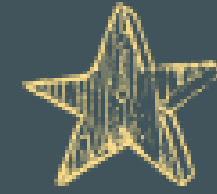
This is common

Factors that influence 4-Year Graduation



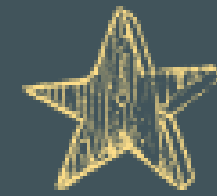
As an Alternative School:

In the past we haven't taken many "true" freshmen.



With Covid behind us - UHS needs to think about what's next!

Post Covid- UHS had an abundance of students who were behind on credits and needed to catch up to graduate on time- this is less true today.



That doesn't change our mission which is:

To give students an opportunity to graduate with certifications and a career

