



U.S. Department of the Interior
Bureau of Land Management

Bureau of Land Management – New Mexico

Find us online at [www.blm.gov/new -mexico](http://www.blm.gov/new-mexico)

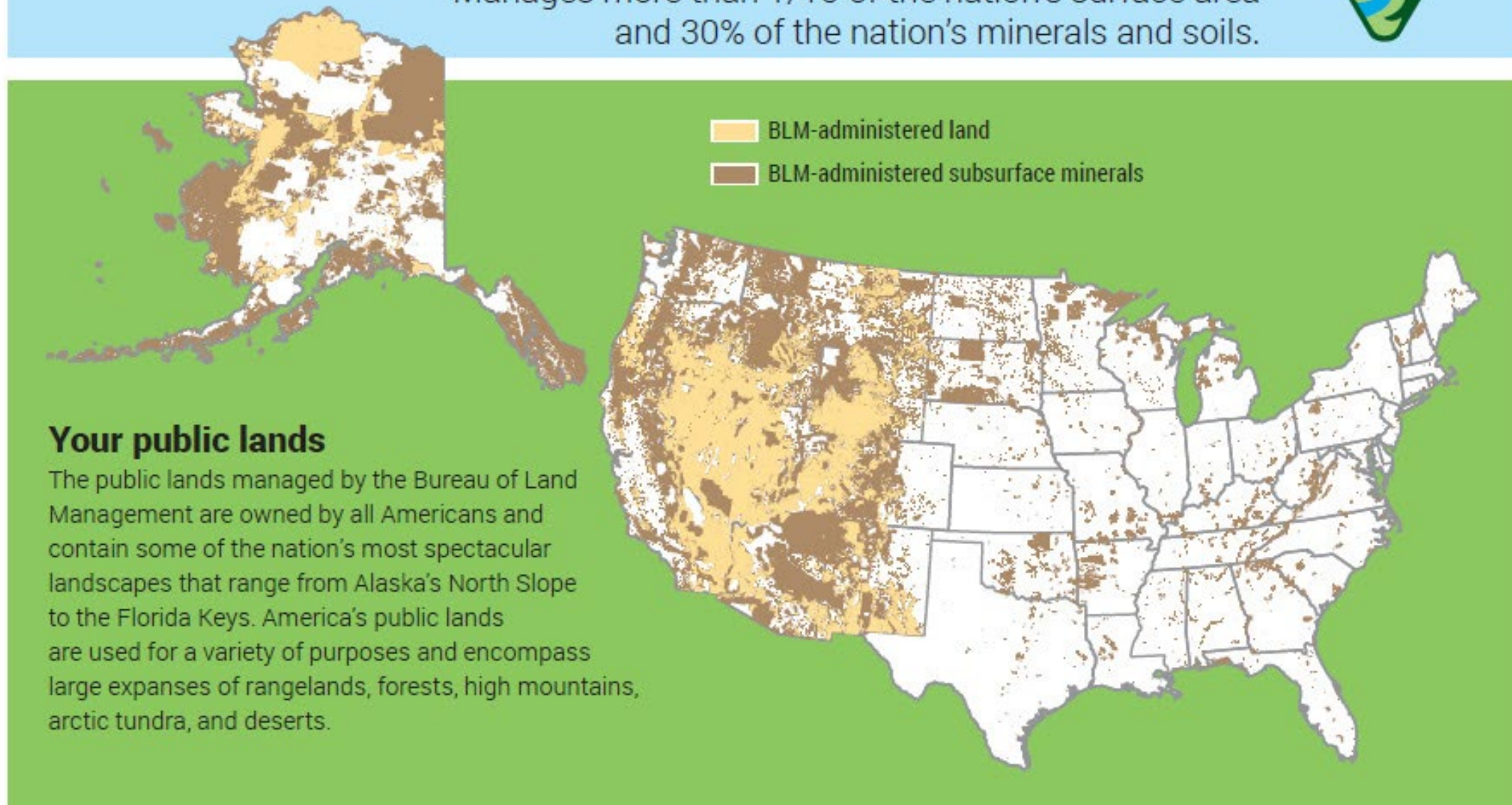




The Bureau of Land Management



Manages more than 1/10 of the nation's surface area
and 30% of the nation's minerals and soils.





BLM Mission

The Bureau of Land Management's mission is to sustain the health, diversity, and productivity of public lands for the use and enjoyment of present and future generations.

BLM has a multiple-use mandate, which means we try to allow as many types of activities on the lands we manage, as possible. In New Mexico, we support all of the activities depicted below, and then some!





BLM-New Mexico (a multi-state operation)

BLM employees in New Mexico, Oklahoma, Texas, and Kansas care for 13.5 million surface acres of public lands and manage 42 million sub-surface acres of Federal oil, natural gas, and minerals. These lands contain nationally-significant energy and mineral resources, a great variety of wildlife, and an abundance of recreational opportunities.

The red dots indicate our District Offices:

- Norman, OK
- Amarillo, TX
- Farmington (Farmington and Taos field offices)
- Albuquerque (Rio Puerco and Socorro field offices)
- Pecos (Roswell and Carlsbad field offices)
- Las Cruces

And our State Office is in Santa Fe 





Resource Management Plans

BLM is governed largely by the Federal Lands Policy and Management Act of 1976 (FLPMA).

The BLM prepares resource management plans (RMPs), which are blueprints for keeping public lands productive for multiple uses. As plans are prepared, the BLM invites and values local voices and diverse views; respects the ties that native and traditional communities have to the land; and develops partnerships for successful resource stewardship.

All district and field offices have RMPs that outline broad management objectives for the entirety of BLM lands. Some special management areas have more specific plans as well, such as the Fort Stanton-Snowy River Cave national conservation area.

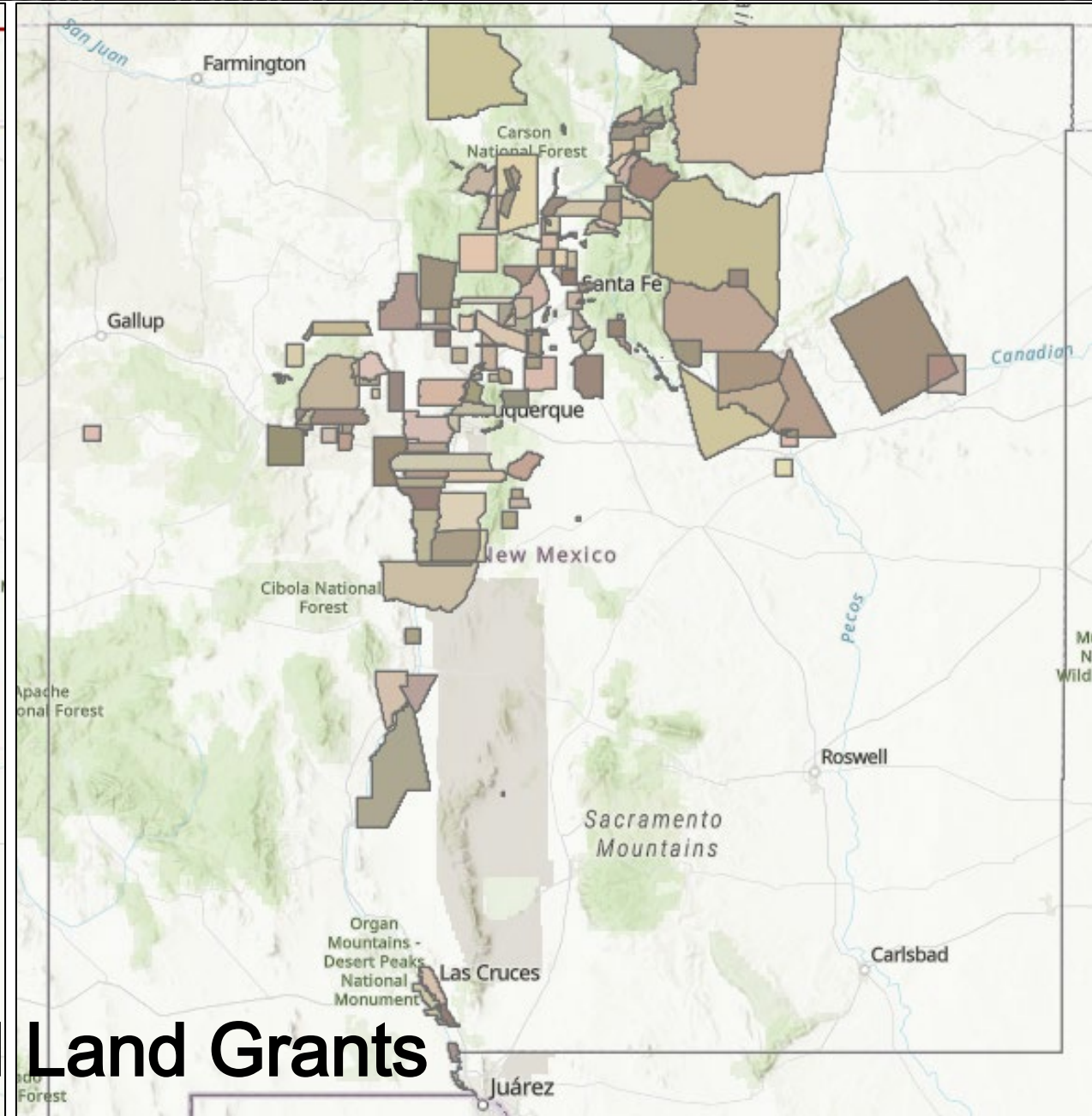
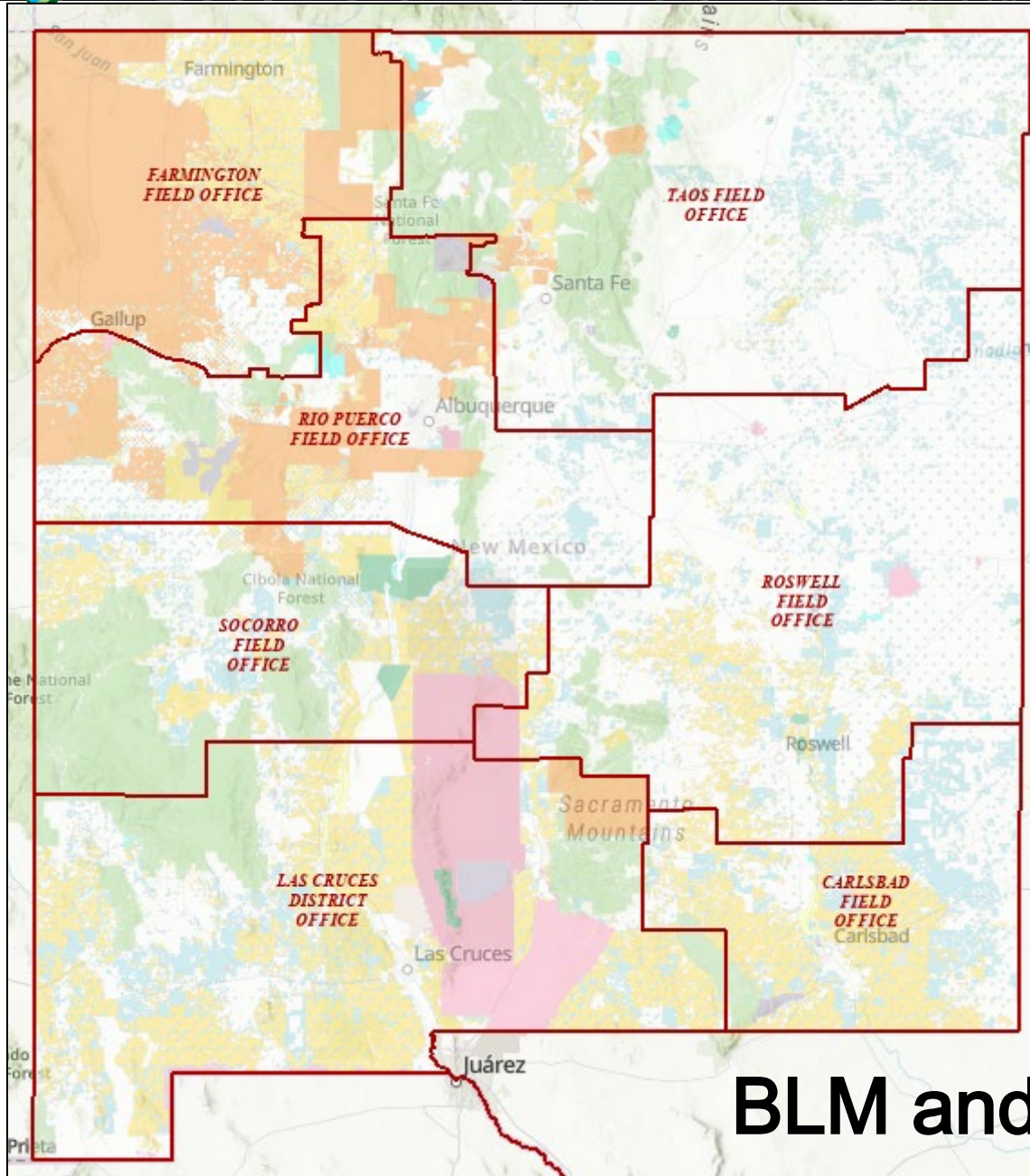
Lesser Prairie Chicken, Pecos District



Big Hatchet Mountains, Las Cruces District



Simon Canyon, Farmington District



BLM and Land Grants



Land Disposal

While FLPMA directs the BLM to retain most public lands, it does authorize the BLM to dispose of lands which are uneconomical or difficult to manage with respect to contiguous lands; all disposals must meet specific requirements and objectives.

The Recreation and Public Purposes Act (R&PP) authorizes the BLM to dispose of lands for recreational use or other public purposes that benefit local communities or governments, or tribal governments. [It is not clear if this authority applies to land grant-mercedes]

Before any sale or exchange can be initiated, the lands must be identified as available for disposal in an RMP. **The best way to learn about potential parcels for disposal, or to nominate a parcel for disposal via sale or R&PP, is to contact the local District Office.**





Contact Information

New Mexico State Office

- 301 Dinosaur Trail
Santa Fe, NM 87508
- Phone: 505-954-2000

Albuquerque District Office

- 100 Sun Avenue, NE
Pan American Building, Suite 330
Albuquerque, NM 87109
- Phone: 505-761-8700

Farmington District Office

- 6251 College Blvd., Suite A
Farmington, NM 87402
- Phone: 505-564-7600

Las Cruces District Office

- 1800 Marquess Street
Las Cruces, NM 88005-3371
- Phone: 575-525-4300

Pecos District Office

- 2909 West Second Street
Roswell, NM 88201-2019
- Phone: 575-627-0272

Tokey Boswell, Deputy State Director,
Lands and Resources
505-954-2224
tboswell@blm.gov

