

# Enhancing Policing Strategies with Modern Technology

From Traditional to Intelligence-Led Policing



# Introduction to Modern Policing



## Evolution of Policing

The evolution of policing has transitioned from traditional reactive methods to a data-driven approach focused on crime prevention. This shift highlights the need for law enforcement agencies to adapt and integrate modern technologies to enhance operational effectiveness and community safety.

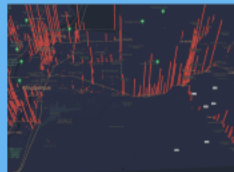


## Importance of Technology

Modern technology plays a critical role in enhancing public safety, improving response times, and reducing deputy workload. As technology evolves this enables deputies to access real-time information, which is essential for informed decision-making during emergencies or critical incidents.

## Overview of Key Technologies

Key technologies transforming policing include Fusus for real-time video surveillance integration, Peregrine for crime analytics and intelligence-led policing, and Flock Safety's Automated License Plate Recognition (ALPR) system. These tools facilitate data-driven decisions and improve inter-agency cooperation.



\*Axon







# Evolution of Policing

The evolution of policing has transitioned from traditional reactive methods to a data-driven approach focused on crime prevention. This shift highlights the need for law enforcement agencies to adapt and integrate modern technologies to enhance operational effectiveness and community safety.



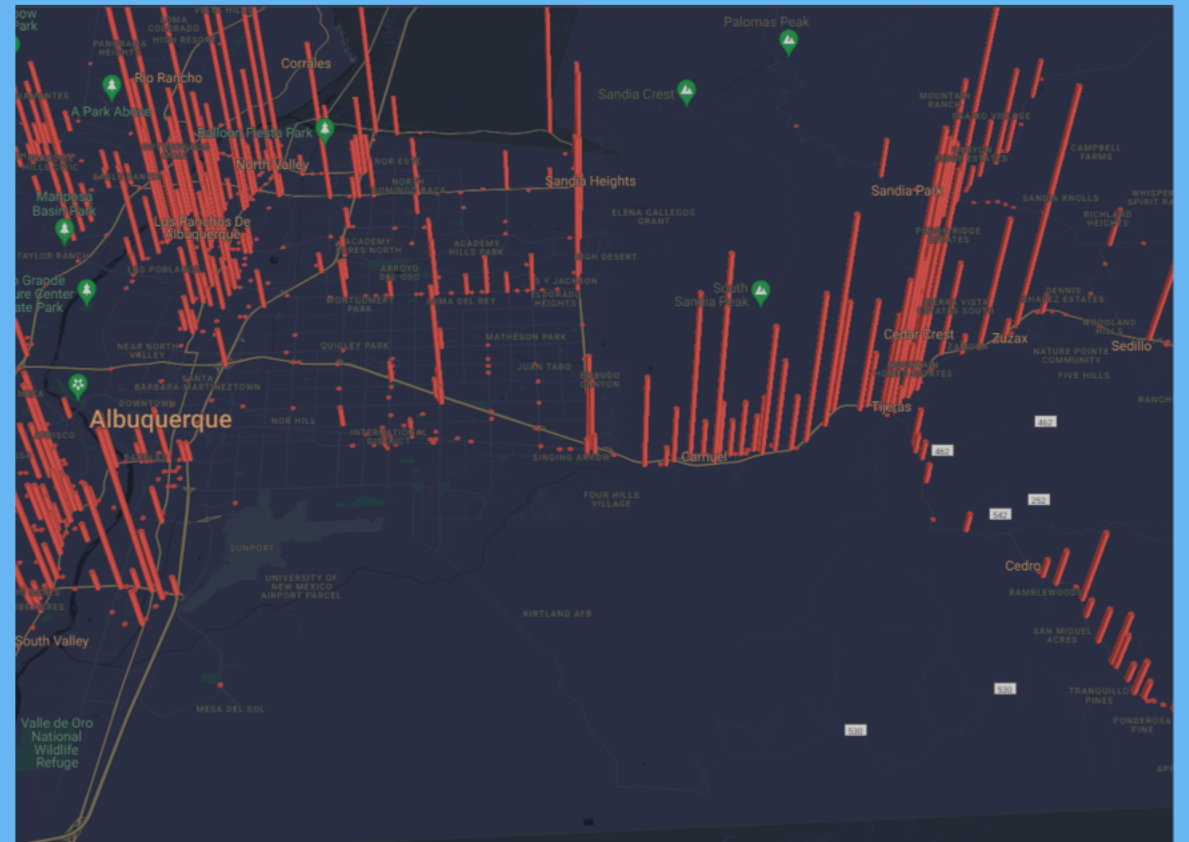
# Importance of Technology

Modern technology plays a critical role in enhancing public safety, improving response times, and reducing deputy workload. As technology evolves this enables deputies to access real-time information, which is essential for informed decision-making during emergencies or critical incidents.



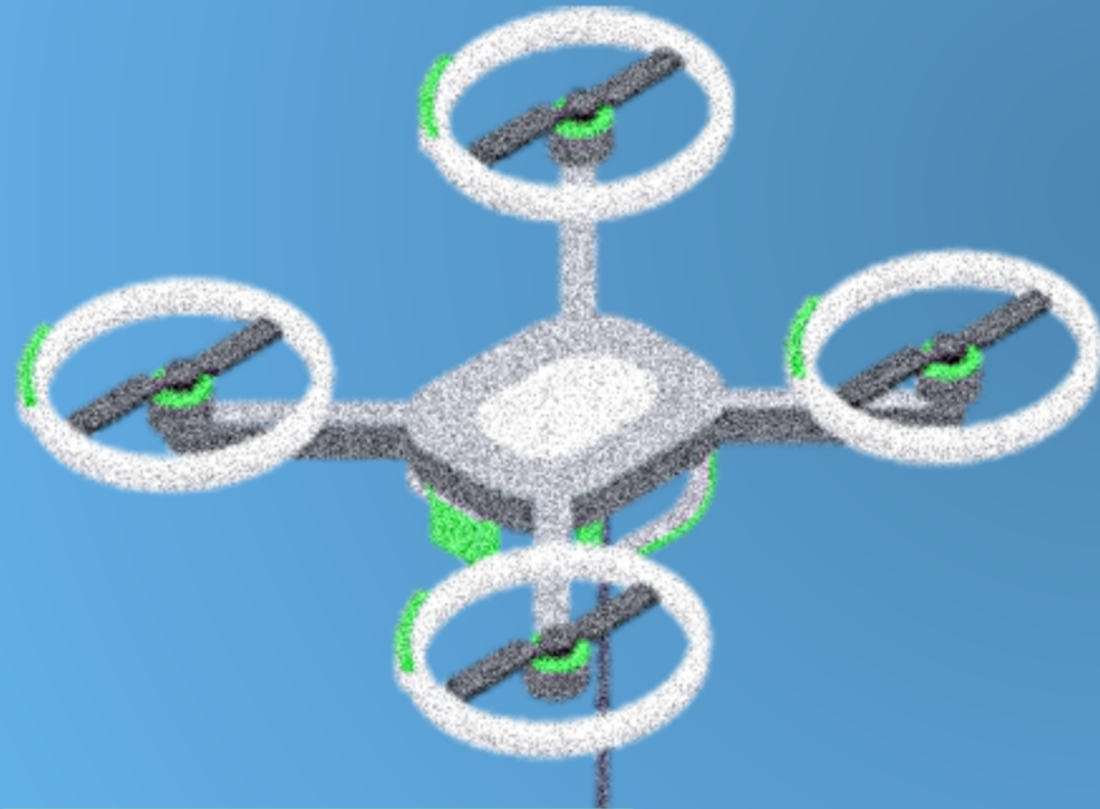
# Overview of Key Technologies

Key technologies transforming policing include Fusus for real-time video surveillance integration, Peregrine for crime analytics and intelligence-led policing, and Flock Safety's Automated License Plate Recognition (ALPR) system. These tools facilitate data-driven decisions and improve inter-agency cooperation.



\*Axon

# Traditional vs. Modern Policing



## Technology Spotlight

### Characteristics of Traditional Policing

Traditional policing is characterized by reactive patrols and reactive crime responses. This approach heavily relies on eyewitness accounts, manual investigations, and a prescriptive framework often limiting proactive measures.



### Features of Intelligence-Led Policing

Intelligence-led policing utilizes analytics and real-time data sharing to enhance law enforcement efficacy. It emphasizes proactive strategies and data-driven decision-making to allocate resources more effectively and anticipate areas which require additional resources.



### Comparative Analysis

The comparison reveals a shift from reactive responses to proactive strategies. Traditional policing often leads to inefficiencies due to reliance on manual inputs, while intelligence-led approaches foster collaboration, enhance operational awareness, and optimize crime prevention efforts.





# Characteristics of Traditional Policing

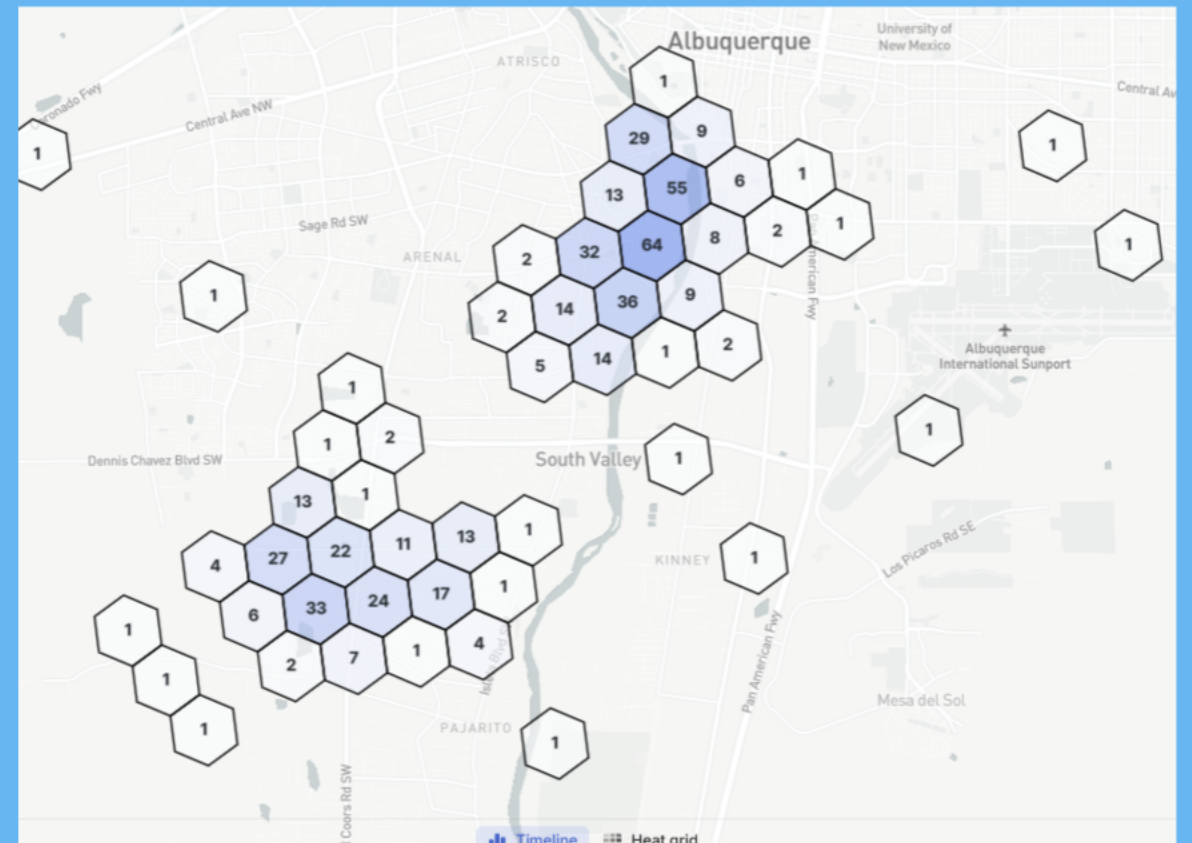
Traditional policing is characterized by routine patrols and reactive crime responses. This approach heavily relies on eyewitness accounts, manual investigations, and a prescriptive framework often limiting proactive measures.



\* Over vs. precision policing

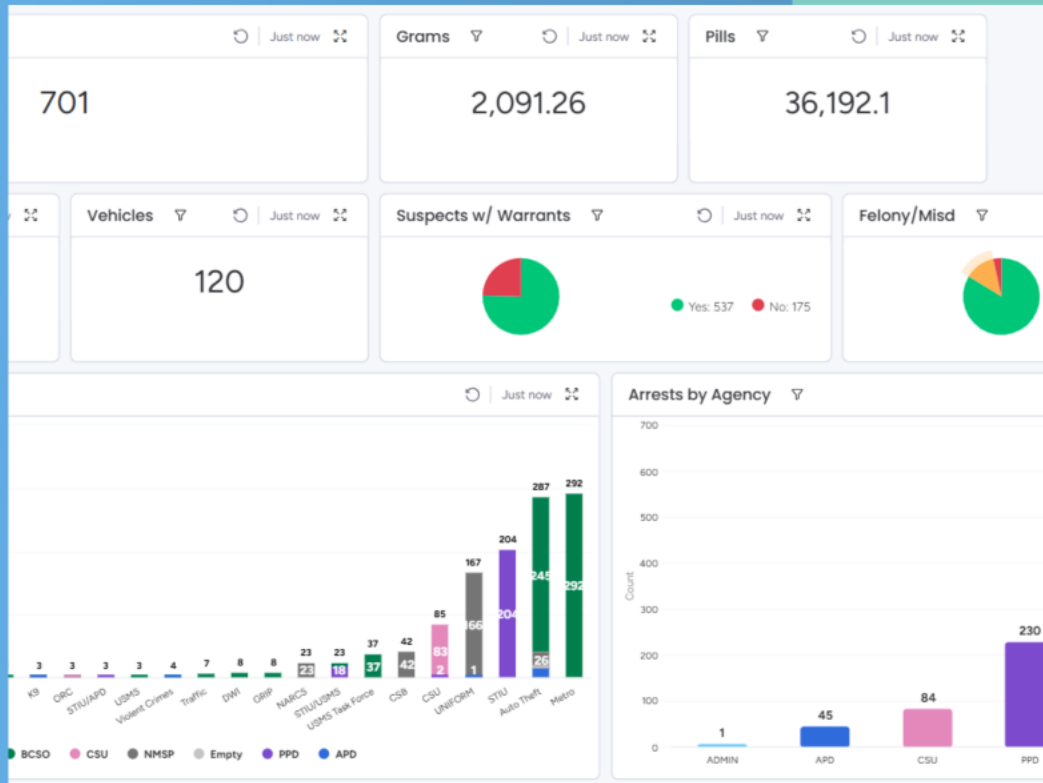
# Features of Intelligence-Led Policing

Intelligence-led policing utilizes analytics and real-time data sharing to enhance law enforcement efficacy. It emphasizes proactive strategies and data-driven decision-making to allocate resources more effectively and anticipate areas which require additional resources.



\*Data Silos





# Comparative Analysis

The comparison reveals a shift from reactive responses to proactive strategies. Traditional policing often leads to inefficiencies due to reliance on manual inputs, while intelligence-led approaches foster collaboration, enhance situational awareness, and optimize crime prevention efforts.

\*Geographical boundaries

# Technology Spotlight



## Real-Time Crime Awareness

Fusus enhances real-time crime awareness by integrating live video feeds and CAD into a centralized system. This allows deputies to acquire immediate situational insights and formulate strategies to approach critical incidents.



## Drone as a first responder (DFR)

The Sheriff's Office is rolling out a DFR program which will enhance the response time to calls for service and add situational awareness for responding deputies.

## Democratization

Fusus has been provided to all personnel, through roles/permissions based access. This enables deputies to access information when and where they need it to support operations.



## Impact on Policing

The deployment of Fusus has led to gathering additional information for critical events and improved situational awareness. It encourages an evidence-based, data-driven approach and provides a more efficient, transparent and reliable service to the community. This technology has enhanced the trust between law enforcement and the public.

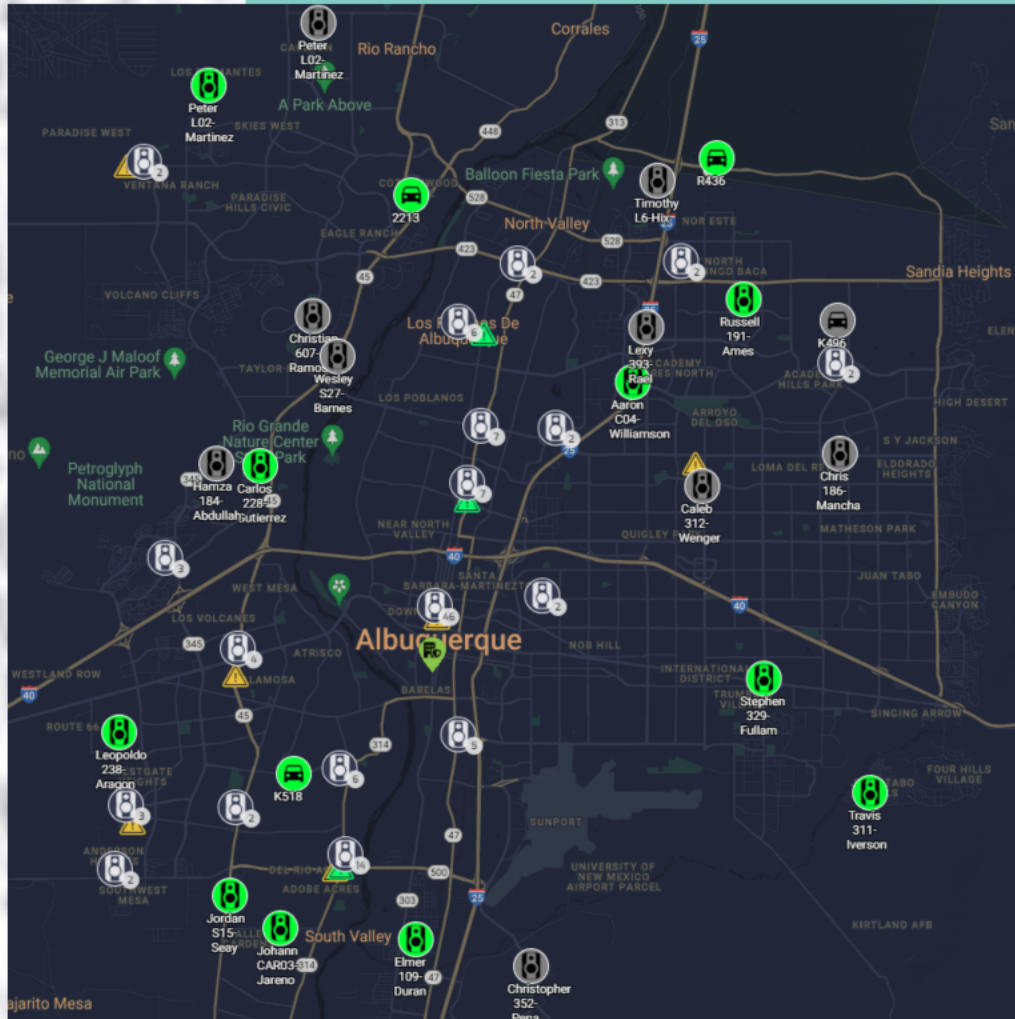


## Future Potential

By gathering information sooner on priority calls for service, this will allow deputies to make more informed decisions prior to arriving on scene.







# Real-Time Crime Awareness

Fusus enhances real-time crime awareness by integrating live video feeds and CAD into a centralized system. This allows deputies to acquire immediate situational insights and formulate strategies to approach critical incidents.

# Impact on Policing

The deployment of Fusus has led to gathering additional information for criminal events and improved situational awareness. By encouraging community engagement, businesses and residents provide essential footage that aids investigations, fostering trust between law enforcement and the public.



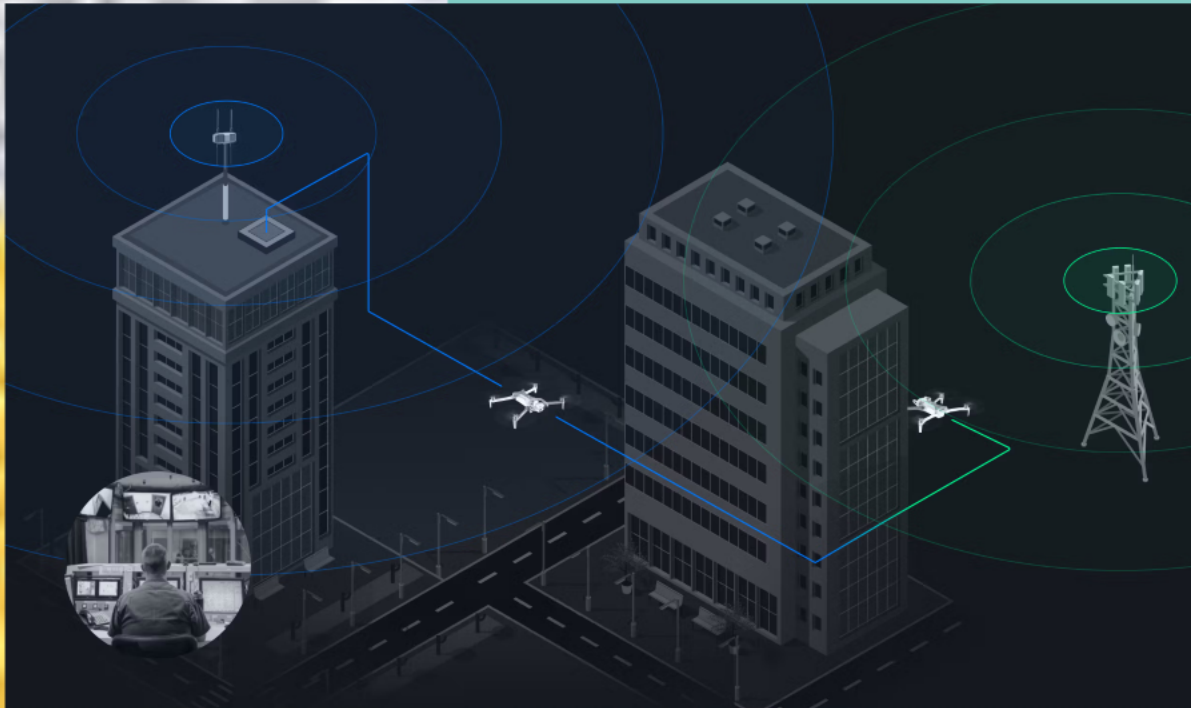
The screenshot shows the website for the CONNECT BERNALILLO COUNTY program. The header includes a police badge logo, navigation links for 'Camera Registration', 'Camera Integration', 'Shop', and 'FAQs', and user icons. The main content area features a large headline 'Help Keep Bernalillo County Safe' over a background image of a desert landscape. Below the headline, two statistics are displayed: '154 Registered Cameras' and '360 Integrated Cameras'. At the bottom, a text block describes the program as a new public safety initiative.

Camera Registration Camera Integration Shop FAQs

## Help Keep Bernalillo County Safe

154 Registered Cameras 360 Integrated Cameras

**CONNECT BERNALILLO COUNTY** is a new public safety program enabling the people of Bernalillo County to help keep their community safe.



# Drone as a first responder (DFR)

The Sheriff's Office is rolling out a DFR program which will enhance the response time to calls for service and add situational awareness for responding deputies.



# Future Potential

By gathering information sooner on priority calls for service, this will allow deputies to make more informed decisions prior to arriving on scene.



# Democritization

---

Fusus has been provided to all personnel, through roles/permissions based access. This enables deputies to access information when and where they need it to support operations.



# Technology Spotlight - Peregrine



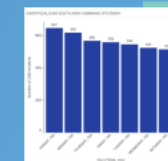
## Data Aggregation

Peregrine aggregation data from incident reports, calls for service, and case files, creating a centralized intelligence hub. The data integration allows for a comprehensive overview for community safety, aiding in informed decision-making for the Sheriff's Office at all levels.



## Crime Trend Detection

Using AI algorithms, Peregrine identifies crime trends and hotspots by analyzing historical data patterns, which is vetted and validated by intelligence analysts. This capability enables the Sheriff's Office to allocate resources efficiently.



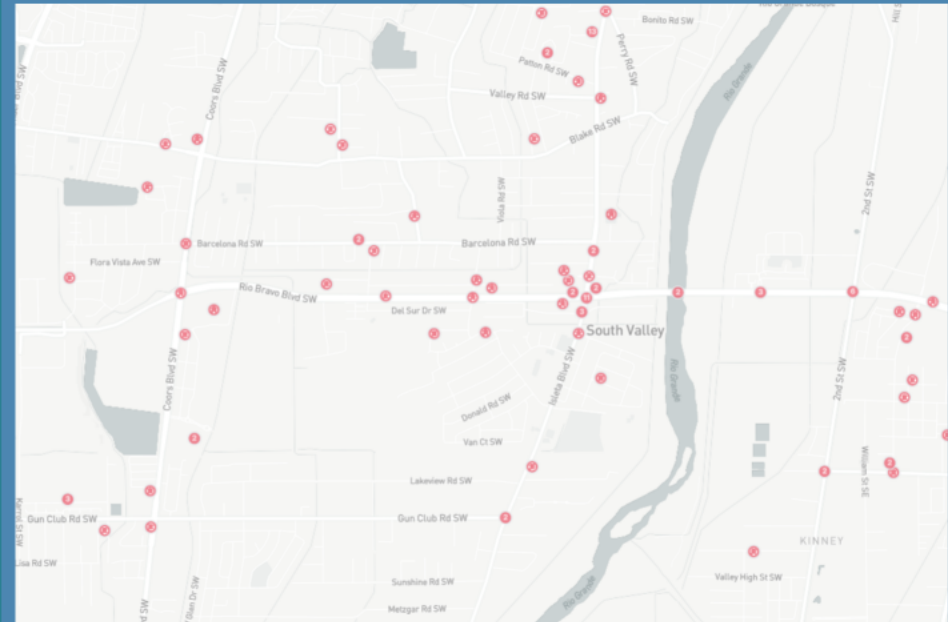
## Enhanced Deployment

Intelligence-driven insights facilitate strategic, timely deployment in high-crime areas during peak hours. Enhanced resource allocation results in increased officer safety, reduced response times, and improved overall community safety.



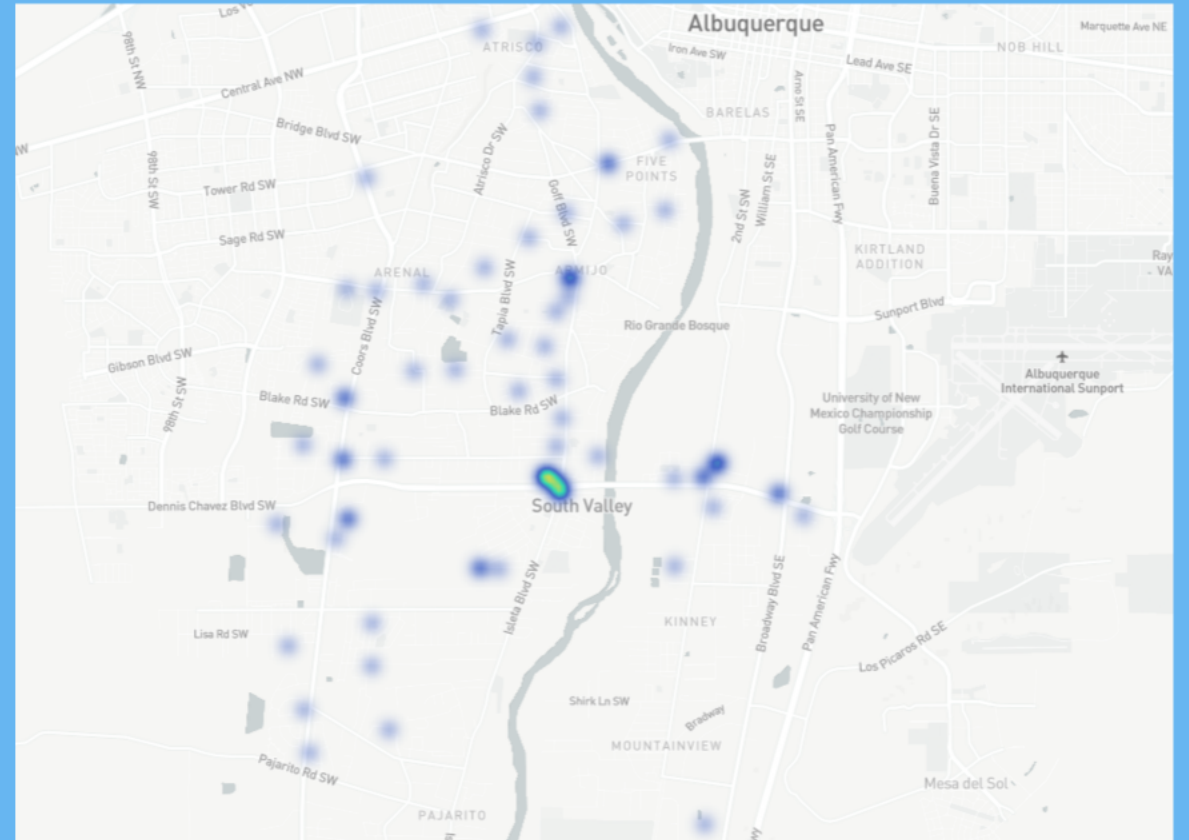
# Data Aggregation

Peregrine aggregates data from incident reports, calls for service, and case files; creating a centralized intelligence hub. This data integration allows for a comprehensive overview for community safety, aiding in informed decision-making for the Sheriff's Office at all levels.

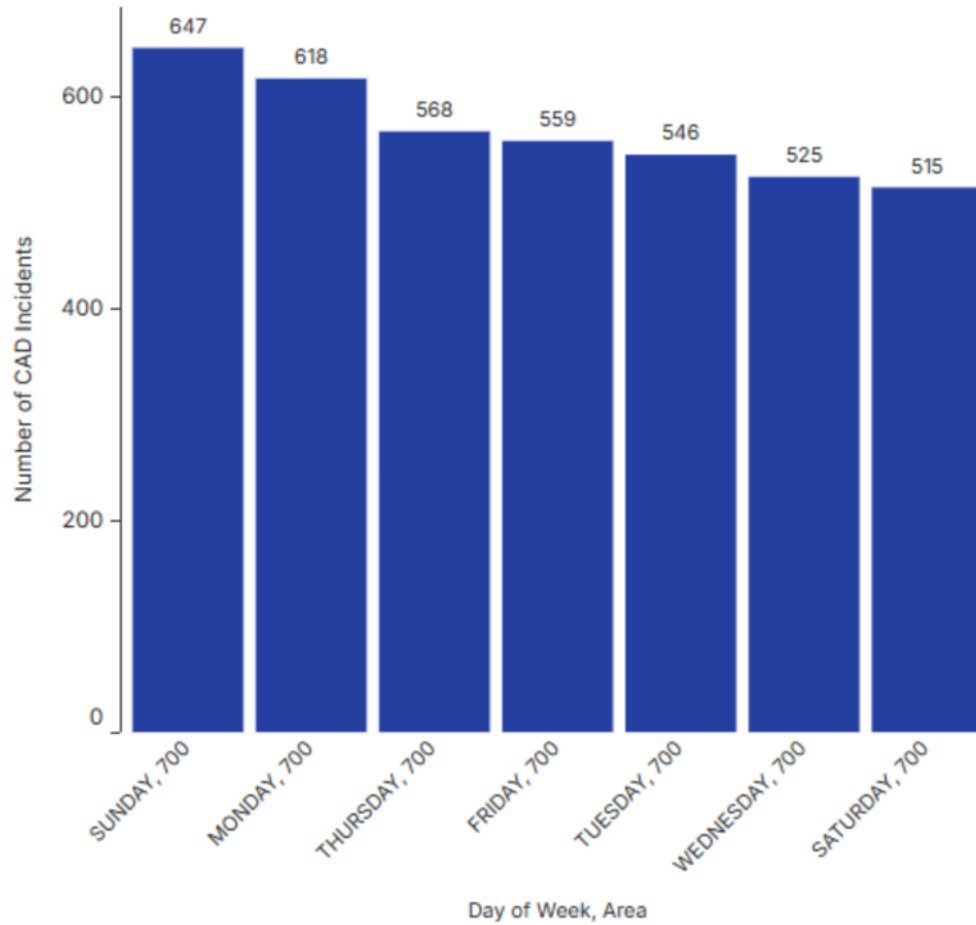


# Crime Trend Detection

Using AI algorithms, Peregrine identifies crime trends and hotspots by analyzing historical data patterns, which is vetted and validated by intelligence analysts. This capability enables the Sheriff's Office to allocate resources efficiently.



(UNOFFICIAL/CAD) SOUTH AREA COMMAND CFS GRAPH



# Enhanced Deployment

Intelligence-driven insights facilitate strategic deputy deployment in high-crime areas during peak hours. Enhanced resource allocation results in increased officer safety, reduced response times, and improved overall community safety.





# Program Value

## Strategic Outcomes

Improved efficiency- delivering better outcomes

Collective security- Interagency data sharing transforms isolated responses into coordinated strategies against criminal predicates

Sustainability- stabilizing these systems, preventing information fragmentation and ensuring continuous improvement.

## Partnerships

Working with fusion centers, federal agencies, local businesses, schools and NGO's to share information.

Establish clear standards for data sharing, accountability and coordinating diverse actors to improve public safety.



## Balancing Safety and Civil Liberties

Effective policing must balance community safety with civil liberties. Oversight mechanisms must be established to ensure accountability while using technology. It is essential to foster public engagement and transparency to maintain a cooperative relationship between law enforcement and the community.



# Strategic Outcomes

Improved efficiency- delivering better outcomes

Collective security- Interagency data sharing transforms isolated responses into coordinated strategies against criminal predicates

Sustainability- stabilizing these systems, preventing information fragmentation and ensuring continuous improvement.

# Partnerships

Working with fusion centers, federal agencies, local businesses, schools and NGO's to share information.

Establish clear standards for data sharing, accountability and coordinating diverse actors to improve public safety.





# Balancing Safety and Civil Liberties

Effective policing must balance community safety with civil liberties. Oversight mechanisms should be established to ensure accountability while using technology. It is essential to foster public engagement and transparency to maintain a cooperative relationship between law enforcement and the community.