

# Issues for Hearing

Ensuring Equity Through Spending: School-Level Spending  
Reported Pursuant to the Federal Every Student Succeeds Act  
Prepared by Joseph W. Simon, Principal Analyst, LESC

## Summary

- The federal Every Student Succeeds Act requires a school’s report card to include expenditures of federal funds and state and local funds per student.
- Advocates proposed this provision to urge school districts to evaluate spending across individual school sites within a school district and start funding equity conversations within school districts.
- This summer, PED released per-pupil expenditure (PPE) data for FY19<sup>1</sup>. The spending data includes amounts for instruction, student support services, and centralized costs, but excludes food service, capital outlay, and debt services.

**Total Per Pupil Expenditures by School District Size**

	<b>Large School Districts</b>	<b>Medium School Districts</b>	<b>Small School Districts</b>	<b>Very Small School Districts</b>	<b>State-Chartered Charter Schools</b>
Number of Entities	15	35	20	18	51
Highest PPE	\$12,451	\$17,701	\$27,526	\$55,040	\$59,835
Average PPE	\$9,421	\$10,848	\$14,395	\$26,619	\$9,756
Median PPE	\$9,199	\$10,707	\$13,661	\$19,419	\$10,776
Lowest PPE	\$8,038	\$8,862	\$8,740	\$16,297	\$6,044

Source: New Mexico Vistas (newmexicoschools.com)

**Total Per Pupil Expenditures by School Type**

	<b>Elementary Schools</b>	<b>Middle Schools</b>	<b>High Schools</b>	<b>K-8 Schools</b>	<b>K-12 Schools</b>
Number of Entities	430	160	122	28	12
Average PPE	\$9,954	\$9,461	\$9,825	\$8,959	\$8,666
Median PPE	\$10,126	\$10,139	\$9,331	\$9,158	\$8,962

Source: New Mexico Vistas (newmexicoschools.com)

## Data Limitations

- Comparability of data across school districts is limited because school districts are able to choose their method for allocating central costs.
- Only one year of data is available for analysis; these data may be inconsistent from year to year. In addition, school districts may not have considered site-level spending prior to this year.
- The data includes spending for special programs or populations of students that may not be uniform across school sites, such as special education.

<sup>1</sup> Data is available for all school districts and charter schools, apart from Vaughn Municipal Schools



# Per Pupil Spending Report

School District  
Albuquerque Public Schools

School Type	School Name	State and Local PPE	Federal PPE	Total PPE	Percent Directly Certified
Elementary School	McColum Elementary	\$15,736	\$2,036	\$17,772	47.58%
	Los Padillas Elementary	\$12,535	\$4,051	\$16,586	64.13%
	Mark Twain Elementary	\$14,031	\$1,898	\$15,929	55.35%
	MacArthur Elementary	\$13,592	\$1,391	\$14,984	54.10%
	Whittier Elementary	\$11,061	\$3,842	\$14,903	70.79%
	Montezume Elementary	\$12,743	\$2,157	\$14,900	57.60%
	Duranes Elementary	\$11,864	\$1,718	\$13,582	68.60%
	Hawthorne Elementary	\$11,802	\$1,464	\$13,266	64.53%
	Pajarito Elementary	\$11,462	\$1,425	\$12,887	57.73%
	La Luz Elementary	\$10,870	\$1,712	\$12,583	59.66%
	Kirtland Elementary	\$10,499	\$1,751	\$12,250	68.61%
	Hodgin Elementary	\$10,412	\$1,562	\$11,974	69.33%
	Zia Elementary	\$10,712	\$1,081	\$11,794	39.63%
	Eugene Field Elementary	\$10,149	\$1,433	\$11,581	60.30%
	Atrisco Elementary	\$9,844	\$1,699	\$11,543	69.21%
	Chaparral Elementary	\$10,406	\$1,085	\$11,491	51.81%
	Mitchell Elementary	\$10,178	\$1,058	\$11,236	46.47%
	Los Ranchos Elementary	\$9,921	\$1,191	\$11,112	57.84%
	Reginald Chavez Elementary	\$9,639	\$1,436	\$11,074	71.38%
	Valle Vista Elementary	\$9,797	\$1,206	\$11,003	58.40%
	Bel-Air Elementary	\$9,570	\$1,391	\$10,961	61.54%
	Longfellow Elementary	\$9,922	\$971	\$10,893	45.52%
	Cochiti Elementary	\$9,653	\$1,165	\$10,819	60.71%
	Emerson Elementary	\$9,200	\$1,501	\$10,700	71.91%
	Dolores Gonzales Elementary	\$9,198	\$1,436	\$10,633	53.23%
	Lew Wallace Elementary	\$9,560	\$1,034	\$10,594	52.40%
	Collet Park Elementary	\$9,574	\$980	\$10,554	51.94%
	Mountain View Elementary	\$9,358	\$1,175	\$10,533	60.08%
	Armijo Elementary	\$9,138	\$1,388	\$10,526	61.59%
	Apache Elementary	\$9,015	\$1,478	\$10,493	68.60%
	Dennis Chavez Elementary	\$9,655	\$764	\$10,419	14.61%
	Janet Kahn Fine Arts Academy	\$8,475	\$1,835	\$10,310	65.59%
	Kit Carson Elementary	\$8,785	\$1,432	\$10,217	65.66%
	Alameda Elementary	\$9,186	\$979	\$10,165	53.38%
	East San Jose Elementary	\$8,714	\$1,412	\$10,126	51.95%
	Mission Avenue Elementary	\$8,126	\$1,980	\$10,106	60.21%
	Wherry Elementary	\$8,606	\$1,421	\$10,027	72.14%
	Navajo Elementary	\$8,669	\$1,348	\$10,018	51.02%
	Adobe Acres Elementary	\$8,687	\$1,327	\$10,014	61.21%
	Tomasita Elementary	\$8,776	\$1,226	\$10,001	64.01%
Alvarado Elementary	\$9,082	\$890	\$9,972	42.72%	
Governor Bent Elementary	\$8,524	\$1,435	\$9,959	62.27%	
Matheson Park Elementary	\$9,002	\$937	\$9,939	47.48%	
Lowell Elementary	\$8,512	\$1,376	\$9,887	69.50%	
La Mesa Elementary	\$8,483	\$1,332	\$9,815	70.60%	
Marie M Hughes Elementary	\$8,547	\$1,130	\$9,677	36.33%	
Susie Rayos Marmon Elementary	\$8,478	\$1,141	\$9,619	55.84%	
Chamiza Elementary	\$8,856	\$732	\$9,588	28.57%	
A. Montoya Elementary	\$8,854	\$724	\$9,578	35.19%	
Alamosa Elementary	\$8,137	\$1,358	\$9,495	68.02%	
Sombra Del Monte Elementary	\$8,467	\$1,023	\$9,489	51.97%	

Source: New Mexico Vistas (newmexicoschools.com)

# Per Pupil Spending Report

School District  
Albuquerque Public Schools

School Type	School Name	State and Local PPE	Federal PPE	Total PPE	Percent Directly Certified
Elementary School	Inez Elementary	\$8,528	\$945	\$9,474	43.92%
	Griegos Elementary	\$8,550	\$921	\$9,470	41.29%
	Ocate Elementary	\$8,699	\$746	\$9,445	28.63%
	Seven Bar Elementary	\$8,517	\$820	\$9,338	35.36%
	Helen Cordero Primary	\$8,074	\$933	\$9,006	56.50%
	Petroglyph Elementary	\$8,132	\$854	\$8,986	32.69%
	Comanche Elementary	\$8,078	\$892	\$8,970	42.94%
	Edward Gonzales Elementary	\$7,816	\$1,142	\$8,958	56.25%
	Manzano Mesa Elementary	\$8,042	\$895	\$8,936	42.62%
	Lavaland Elementary	\$7,552	\$1,342	\$8,894	70.85%
	Chelwood Elementary	\$7,864	\$1,005	\$8,869	58.14%
	Rudolfo Anaya Elementary	\$7,784	\$1,078	\$8,862	51.10%
	Painted Sky Elementary	\$7,577	\$1,277	\$8,854	55.57%
	Sierra Vista Elementary	\$7,972	\$875	\$8,847	35.36%
	Arroyo Del Oso Elementary	\$8,043	\$793	\$8,837	35.22%
	Edmund G Ross Elementary	\$7,923	\$880	\$8,803	46.41%
	Barcelona Elementary	\$7,843	\$954	\$8,797	62.29%
	Maryann Binford Elementary	\$7,302	\$1,397	\$8,699	54.42%
	Bellehaven Elementary	\$7,756	\$879	\$8,636	55.27%
	Corrales Elementary	\$8,124	\$416	\$8,540	22.54%
	Zuni Elementary	\$7,628	\$912	\$8,540	42.98%
	Coronado Elementary	\$8,060	\$476	\$8,536	17.38%
	Bandelier Elementary	\$8,061	\$437	\$8,498	24.86%
	Carlos Rey Elementary	\$7,335	\$1,157	\$8,492	57.32%
	John Baker Elementary	\$7,946	\$531	\$8,477	23.49%
	S. Y. Jackson Elementary	\$7,741	\$645	\$8,385	15.00%
	San Antonito Elementary	\$7,714	\$511	\$8,225	16.62%
	Goergia O'Keeffe Elementary	\$7,541	\$415	\$7,956	13.06%
	Osuna Elementary	\$7,319	\$576	\$7,895	23.00%
	Hubert H Humphrey Elementary	\$7,027	\$432	\$7,460	8.35%
Monte Vista Elementary	\$6,982	\$359	\$7,341	23.01%	
Double Eagle Elementary	\$6,997	\$288	\$7,285	6.12%	
North Star Elementary	\$6,738	\$381	\$7,120	5.33%	
Tierra Antigua Elementary	\$6,701	\$338	\$7,040	17.34%	
Ventana Ranch Elementary	\$6,549	\$393	\$6,942	25.16%	
Sandia Base Elementary	\$6,502	\$424	\$6,926	14.49%	
Sunset View Elementary	\$6,472	\$362	\$6,835	25.18%	
Middle School	Grant Middle	\$11,717	\$1,399	\$13,116	52.43%
	John Adams Middle	\$11,636	\$1,301	\$12,937	60.79%
	Polk Middle	\$11,557	\$1,369	\$12,926	60.73%
	Hayes Middle	\$10,453	\$1,598	\$12,050	60.33%
	Taft Middle	\$10,605	\$1,204	\$11,809	47.80%
	Garfield Middle	\$9,466	\$2,066	\$11,531	55.79%
	Van Buren Middle	\$9,864	\$1,610	\$11,473	62.65%
	Taylor Middle	\$9,864	\$1,439	\$11,303	43.20%
	Roosevelt Middle	\$10,605	\$567	\$11,172	27.42%
	McKinley Middle	\$9,455	\$1,374	\$10,829	61.38%
	Kennedy Middle	\$9,404	\$1,363	\$10,766	64.15%
	Wilson Middle	\$8,832	\$1,467	\$10,299	62.08%
	L. B. Johnson Middle	\$9,569	\$669	\$10,238	27.10%
	Truman Middle	\$8,864	\$1,231	\$10,096	51.63%

Source: New Mexico Vistas (newmexicoschools.com)

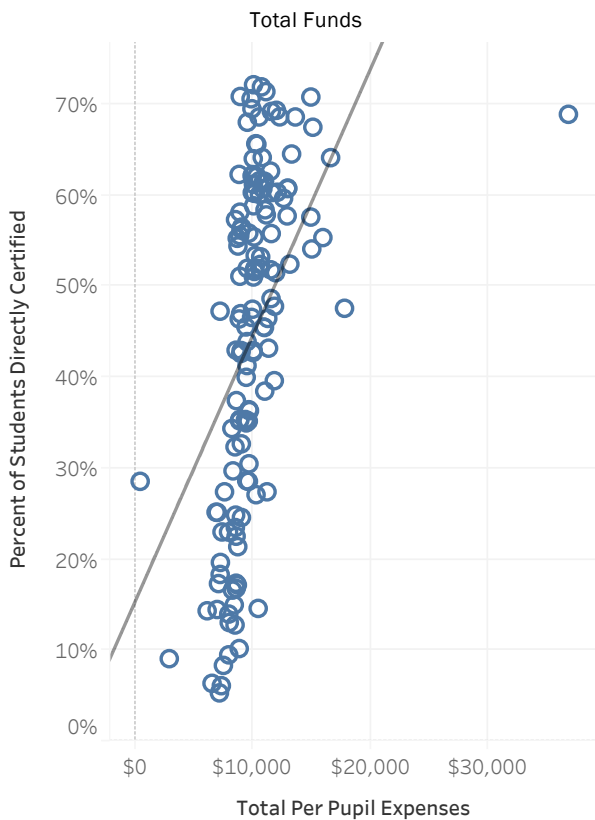
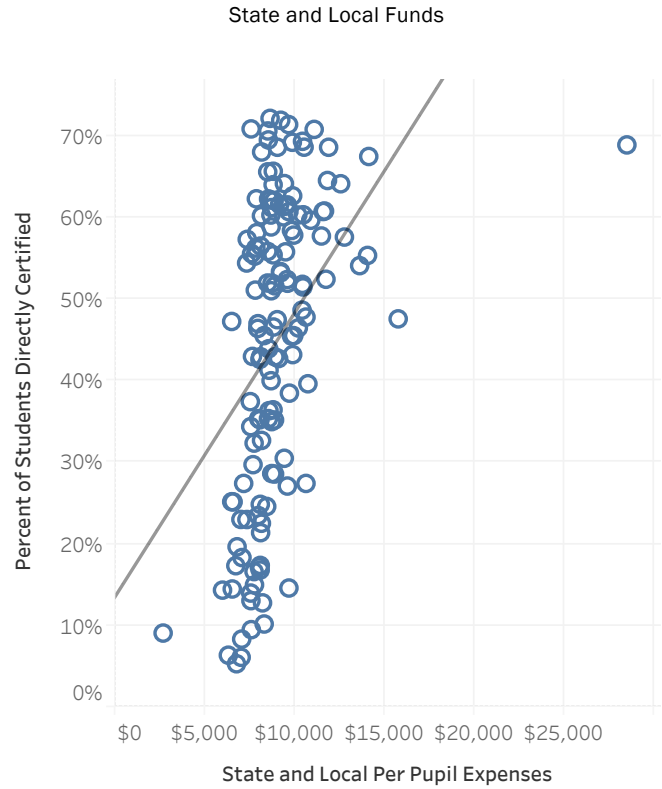
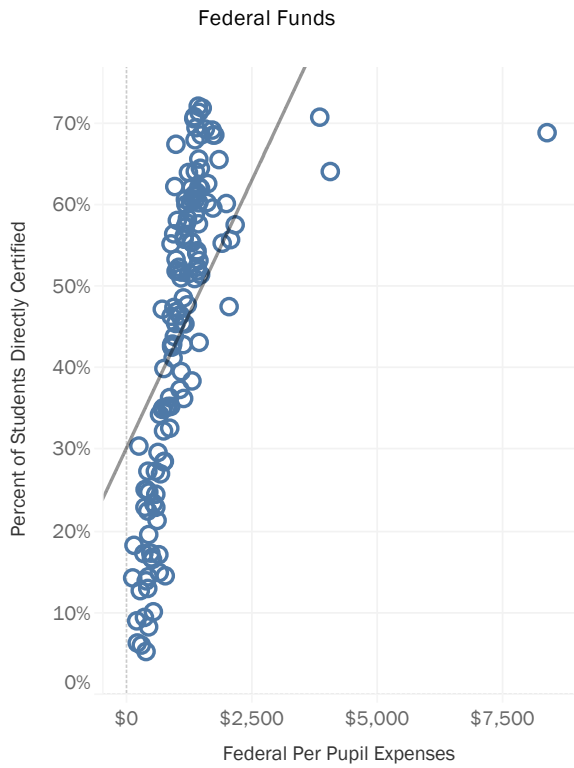
# Per Pupil Spending Report

School District  
Albuquerque Public Schools

School Type	School Name	State and Local PPE	Federal PPE	Total PPE	Percent Directly Certified
Middle School	Jimmy Carter Middle	\$8,775	\$1,294	\$10,069	55.42%
	Harrison Middle	\$8,662	\$1,362	\$10,025	58.84%
	Cleveland Middle	\$8,872	\$1,122	\$9,993	42.93%
	Washington Middle	\$8,652	\$1,266	\$9,918	60.30%
	Ernie Pyle Middle	\$8,616	\$1,286	\$9,902	62.14%
	Hoover Middle	\$8,697	\$704	\$9,402	34.99%
	Jackson Middle	\$7,933	\$993	\$8,926	46.99%
	Desert Ridge Middle	\$8,278	\$527	\$8,804	10.20%
	Jefferson Middle	\$7,719	\$730	\$8,449	32.36%
	Madison Middle	\$7,658	\$620	\$8,278	29.72%
	Eisenhower Middle	\$7,530	\$385	\$7,915	13.99%
	James Monroe Middle	\$7,137	\$418	\$7,555	27.42%
	Tony Hillerman Middle	\$6,770	\$435	\$7,205	19.66%
High School	New Futures High School	\$28,463	\$8,371	\$36,833	68.89%
	School on Wheels High School	\$14,097	\$977	\$15,074	67.47%
	Highland High	\$10,435	\$1,468	\$11,903	51.49%
	Freedom High	\$10,387	\$1,125	\$11,512	48.65%
	Valley High	\$9,683	\$1,296	\$10,979	38.48%
	Del Norte High	\$9,800	\$1,156	\$10,957	45.47%
	Rio Grande High	\$8,795	\$1,062	\$9,858	46.58%
	eCademy Virtual High School	\$9,396	\$239	\$9,635	30.50%
	Manzano High	\$8,772	\$850	\$9,622	36.44%
	West Mesa High	\$8,272	\$1,105	\$9,378	45.53%
	Sandia High	\$8,419	\$576	\$8,994	24.60%
	Cibola High	\$8,080	\$601	\$8,681	21.39%
	Volcano Vista High	\$8,010	\$637	\$8,646	17.19%
	Atrisco Heritage Academy HS	\$7,507	\$1,056	\$8,563	37.44%
	Eldorado High	\$8,055	\$489	\$8,544	16.81%
	Nex+Gen Academy High School	\$8,186	\$266	\$8,453	12.79%
	Albuquerque High	\$7,530	\$650	\$8,180	34.38%
	La Cueva High	\$7,560	\$350	\$7,910	9.51%
	College & Career HS	\$7,043	\$141	\$7,185	18.34%
	Early College Academy	\$2,655	\$196	\$2,851	9.09%
K-8 School	Tres Volcanes Community Collaborative	\$8,662	\$737	\$9,400	40.00%
	George I Sanchez	\$6,470	\$705	\$7,175	47.26%
	Desert Willow Family School	\$6,285	\$207	\$6,492	6.38%
	Coyote Willow Family School	\$5,960	\$115	\$6,075	14.35%
K-12 School	Bernalillo Academy	\$0	\$372	\$372	28.57%

Source: New Mexico Vistas (newmexicoschools.com)

School Site Per Pupil Expenditures and Percentage of Low Income Students



These graphs show the relationship between a school's per-pupil expenditures and the percentage of students that have been "directly certified" as eligible for free meals under the Healthy, Hunger-Free Kids Act of 2010. A student is directly certified based on a family's participation in the Supplemental Nutrition Assistance program or the Temporary Assistance for Needy Families program. As a result, examining the percentage of students directly certify can show differences in number of low income students.

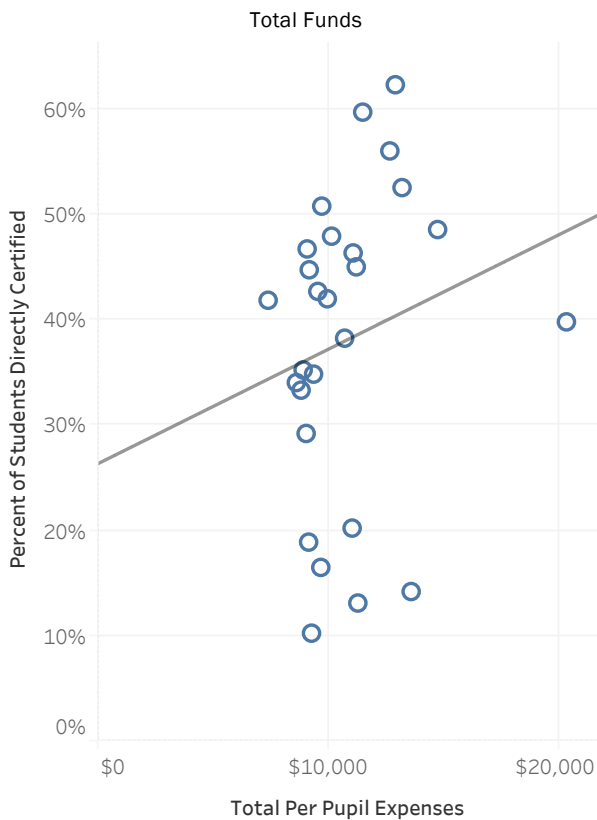
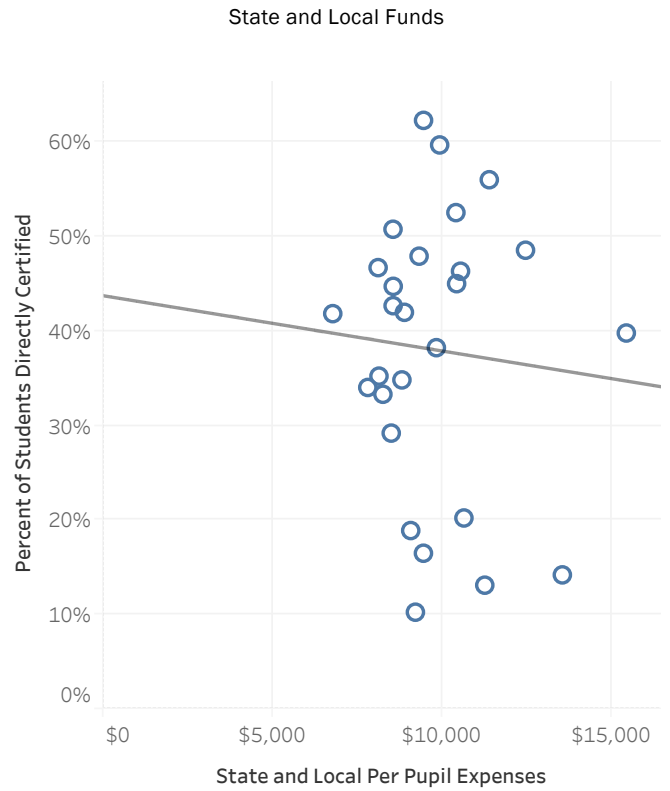
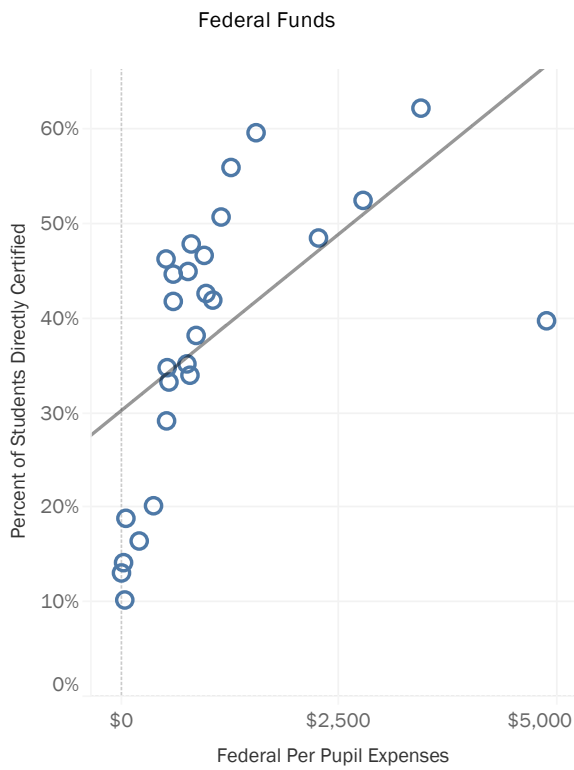
# Per Pupil Spending Report

School District  
Santa Fe Public Schools

School Type	School Name	State and Local PPE	Federal PPE	Total PPE	Percent Directly Certified
Elementary School	TESUQUE ELEMENTARY	\$12,455	\$2,259	\$14,713	48.57%
	FRANCIS X. NAVA ELEMENTARY	\$10,400	\$2,770	\$13,170	52.55%
	SALAZAR ELEMENTARY	\$9,445	\$3,433	\$12,878	62.31%
	CESAR CHAVEZ ELEMENTARY	\$9,920	\$1,543	\$11,463	59.71%
	ACEQUIA MADRE ELEMENTARY	\$11,252	\$0	\$11,252	13.13%
	CHAPARRAL ELEMENTARY	\$10,421	\$763	\$11,184	45.03%
	GONZALES ELEMENTARY	\$9,823	\$856	\$10,679	38.26%
	RAMIREZ THOMAS ELEMENTARY	\$8,880	\$1,047	\$9,926	42.00%
	KEARNY ELEMENTARY	\$8,543	\$1,142	\$9,685	50.79%
	ATALAYA ELEMENTARY	\$9,441	\$203	\$9,644	16.51%
	E.J. MARTINEZ ELEMENTARY	\$8,546	\$970	\$9,516	42.70%
	PINON ELEMENTARY	\$8,806	\$524	\$9,330	34.85%
	WOOD-GORMLEY ELEMENTARY	\$9,204	\$38	\$9,242	10.27%
	CARLOS GILBERT ELEMENTARY	\$9,066	\$51	\$9,117	18.91%
	R.M. SWEENEY ELEMENTARY	\$8,491	\$517	\$9,008	29.22%
	AMY BIEHL COMMUNITY SCHOOL AT RANCHO VIEJO	\$7,799	\$785	\$8,584	34.05%
High School	EARLY COLLEGE OPPORTUNITIES	\$15,430	\$4,873	\$20,303	39.81%
	MANDELA INTERNATIONAL MAGNET (MIMS)	\$13,542	\$24	\$13,565	14.22%
	SANTA FE ENGAGE	\$8,920	\$514	\$9,435	
	CAPITAL HIGH	\$8,129	\$750	\$8,879	35.25%
	SANTA FE HIGH	\$8,245	\$544	\$8,789	33.33%
	ACADEMY AT LARRAGOITE	\$6,765	\$594	\$7,359	41.86%
K-8 School	ASPEN COMMUNITY SCHOOL	\$11,385	\$1,256	\$12,641	56.03%
	EL DORADO COMMUNITY SCHOOL	\$10,636	\$367	\$11,004	20.24%
	EL CAMINO REAL ACADEMY COMMUNITY	\$9,313	\$799	\$10,112	47.94%
	NINA OTERO COMMUNITY SCHOOL	\$8,550	\$593	\$9,143	44.75%
Middle School	MILAGRO MIDDLE	\$10,536	\$511	\$11,047	46.35%
	EDWARD ORTIZ MIDDLE	\$8,103	\$948	\$9,051	46.73%

Source: New Mexico Vistas (newmexicoschools.com)

School Site Per Pupil Expenditures and Percentage of Low Income Students



These graphs show the relationship between a school's per-pupil expenditures and the percentage of students that have been "directly certified" as eligible for free meals under the Healthy, Hunger-Free Kids Act of 2010. A student is directly certified based on a family's participation in the Supplemental Nutrition Assistance program or the Temporary Assistance for Needy Families program. As a result, examining the percentage of students directly certify can show differences in number of low income students.