

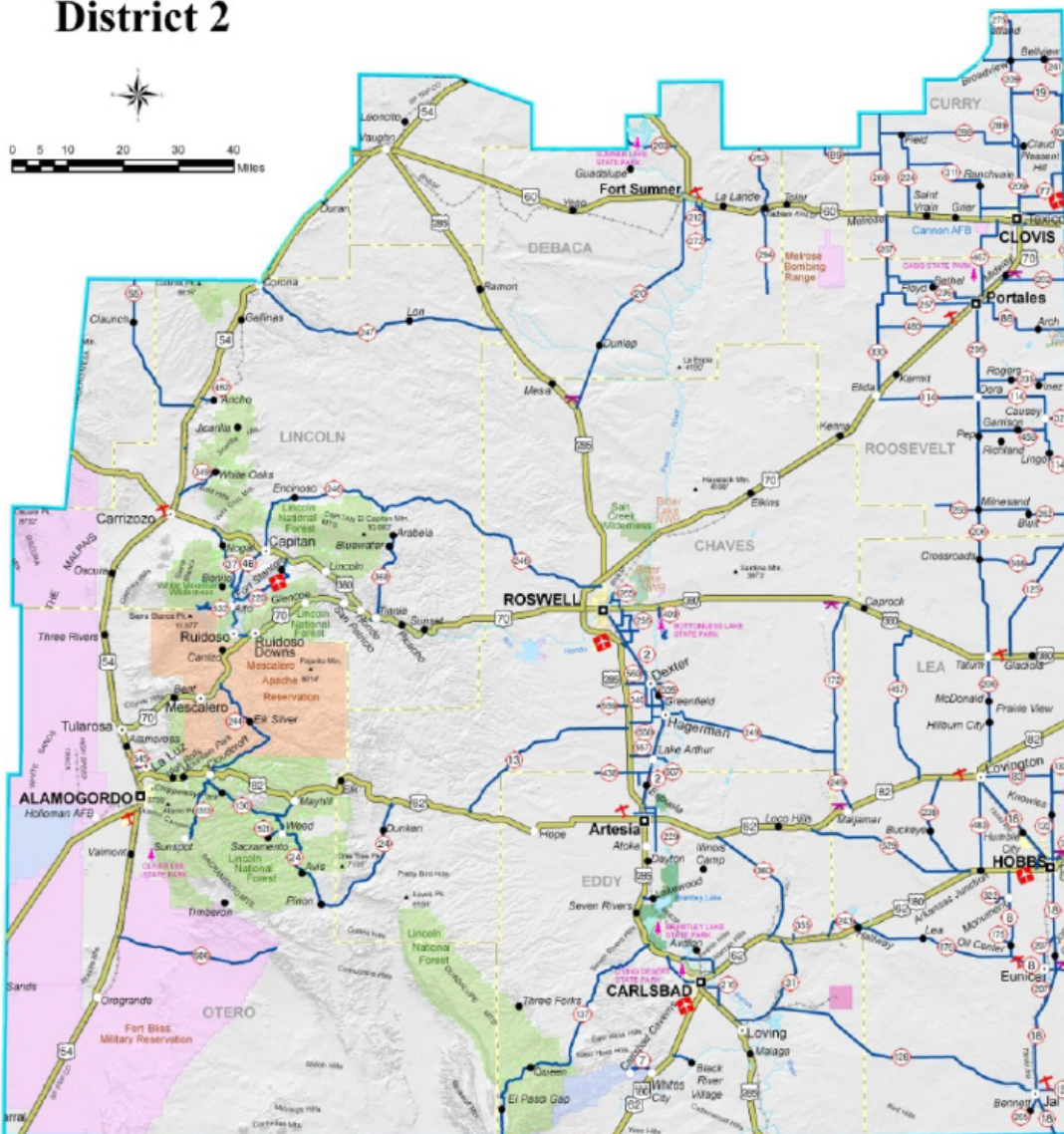


NMDOT District 2 Update

July 10th, 2019

Timothy L. Parker, M.S., P.E.
District Engineer

District 2



- **District 2:** Chaves, Lincoln, Otero, Eddy, Lea, Roosevelt, Curry, De Baca, and parts of Guadalupe and Torrance Counties
- 7750 lane miles of travel, with the most 4 lane non interstate miles in the state. 3840 lane miles of US Routes
- 137 communities served
- 16 patrol yards, 2 special crews, 6 project offices
- 332 FTE's, 185 maintenance, 76 construction, 50 support and 21 engineering
- Vacancy rate 17.5% (4th)
- Avg. turnover 4 per month

Top Priorities

- US 285 MP 0 to MP 22 (22 miles @ \$120M or \$5.5M/mile)
- NM 31
(8 miles @ \$82M) – 2 interchanges and 8 miles 4 lane
(15 miles @ \$65M or \$4.3M/mile)
- NM 128 (52 miles @ \$223M or \$4.3M/mile)
- US 380 (Roswell to Tatum/state line, \$30M, passing lanes every 10 miles)
- WIPP secondary routes have become primary routes



\$89M – D2 Priorities (\$14.6M)

- \$10M – 98 pieces of equipment
- \$2M Mesa Rest Area 36 miles north of Roswell
(US 285 MM 149.8)
(currently being designed by Lee Gamelsky Architect)
Remove and replace existing rest area buildings, water wells
- \$1M to signing and striping
(in addition to what we normally do in standard budget)
Various locations within the District
- \$610k to FLAP match
(federal lands grant we applied for and received at \$4.5M)
A trail interconnection project joint venture with the City of Roswell, Chaves County, Department of Health, Bitter Lakes National Wildlife Refuge. Bulk of funding to go on US 380 from MM 161 to MM 162.5

\$89M – D2 Priorities (continued)

- \$500k to put towards a signalized intersection at Hidalgo and US 62/180 to support WIPP and Sandia National Labs administration buildings.
WIPP/National Labs will contribute a minimum of \$250k.
- \$290k to either a general engineering on-call contract to accelerate projects
- \$200k to Mescalero Apache Tribe
Undetermined location to support and improve the tribe's road infrastructure.

Local Government Outreach

- SERPTO (41 member entities)
- SENMEDD (27 member entities)
- EPCOG (28 member entities)
- Regional coordination/outreach meetings

Thank you