



New Mexico Corrections Department Update

Courts, Corrections, and Justice Committee

September 14, 2020

Presented by Alisha Tafoya Lucero, Cabinet Secretary

Introductions



Alisha Tafoya Lucero,
Cabinet Secretary



John Gay,
Director-Adult
Prisons Division



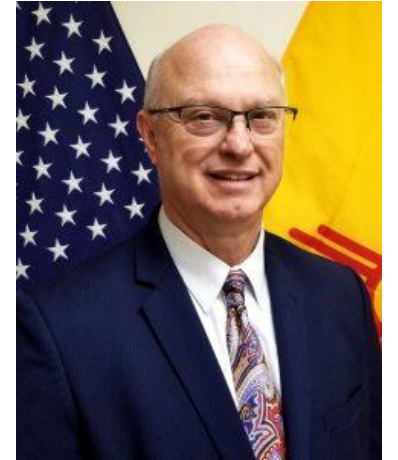
Melanie Martinez,
Director-Probation
and Parole Division



George Stephenson,
Director-Training
Academy



Morgen Jaco,
Director-Reentry
Division



Robert Leon,
Director-Corrections
Industries



Ed Smith, acting
Director ASD



Brianne Bigij,
Chief Counsel



Jerry Brinegar, Chief
Information Officer



Dr. Wendy Price,
Behavioral Health
Bureau Chief



Wenceslaus Asonganyi,
Health Services
Administrator



Eric Harrison,
Public Relations

MISSION, VISION, & VALUES

OUR MISSION

Strengthen New Mexico Communities through effective community supervision, creating safe and professional institutional environments and providing those entrusted to our care with opportunities for positive personal growth and self-development

OUR VISION

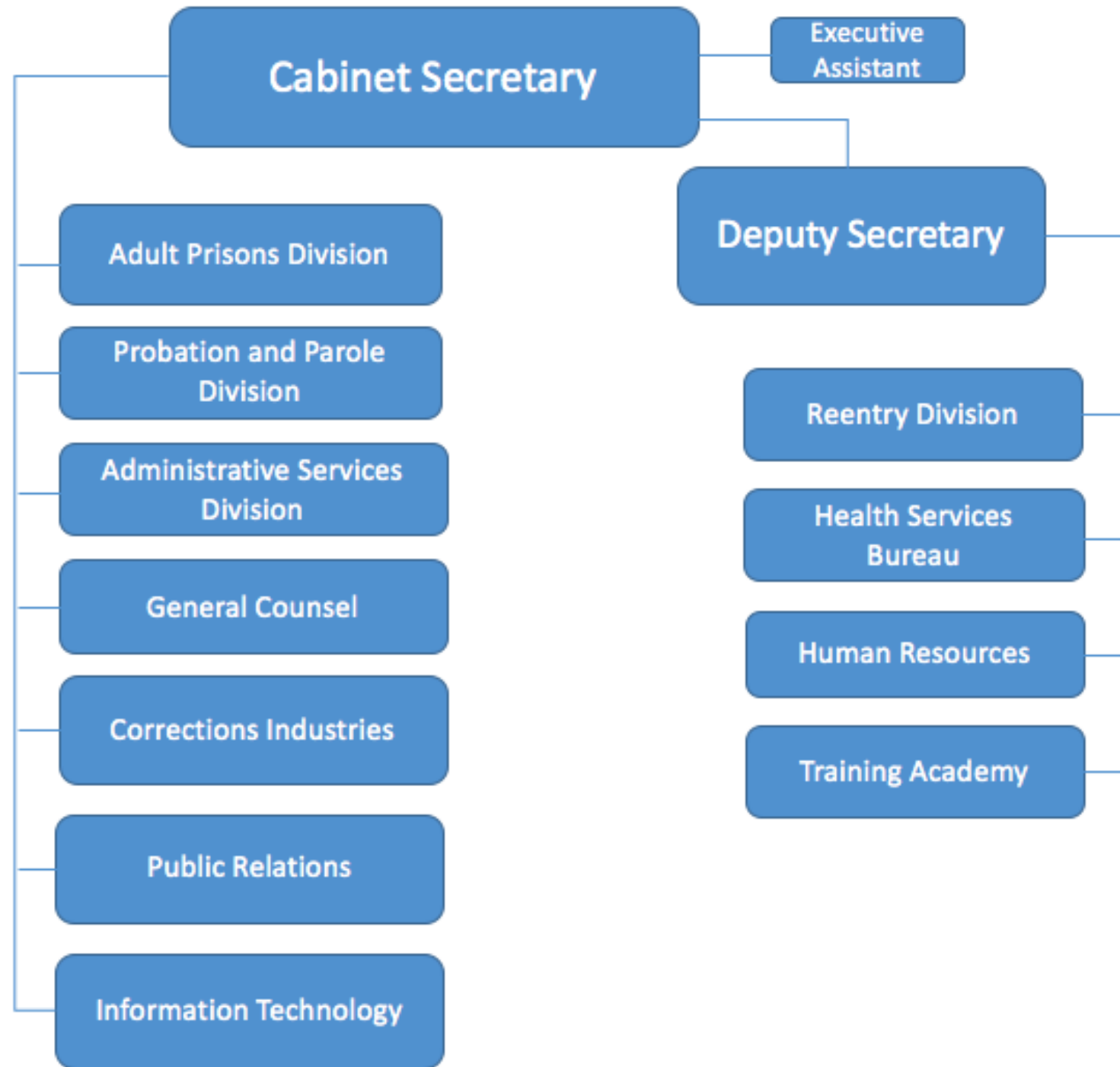
A Stronger New Mexico

OUR VALUES

Respect, Integrity, Service, Encouragement

NMCD

Organizational Structure



Reorganization

- Creation of a Reentry Division
 - Relocation of volunteer and religious services
 - Prerelease planning will include the inmate, field services, reentry and transition specialists
- Internal Affairs/Office of Professional Standards, rightsized and placed into the Office of the General Counsel
- Security Threat Intelligence Unit restructured to direct institutional expertise to facilities and redirect supervision of high risk individuals to field service offices
- Staffing restructured within the Training Academy to maximize specialized training offerings, increase satellite academies and improve recruitment

Training Academy

- Modified hiring processes allowing NMCD to recruit and train a wide variety of applicants
- Curriculum changes with emphasis on communication tools, professionalism, and officer safety
- Recruitment efforts with virtual interviews, location specific screening, and improved advertisement
- Satellite Academies-3 in 2020
- Focused training courses and advances level training courses for line staff and managers at all levels

Reentry Division

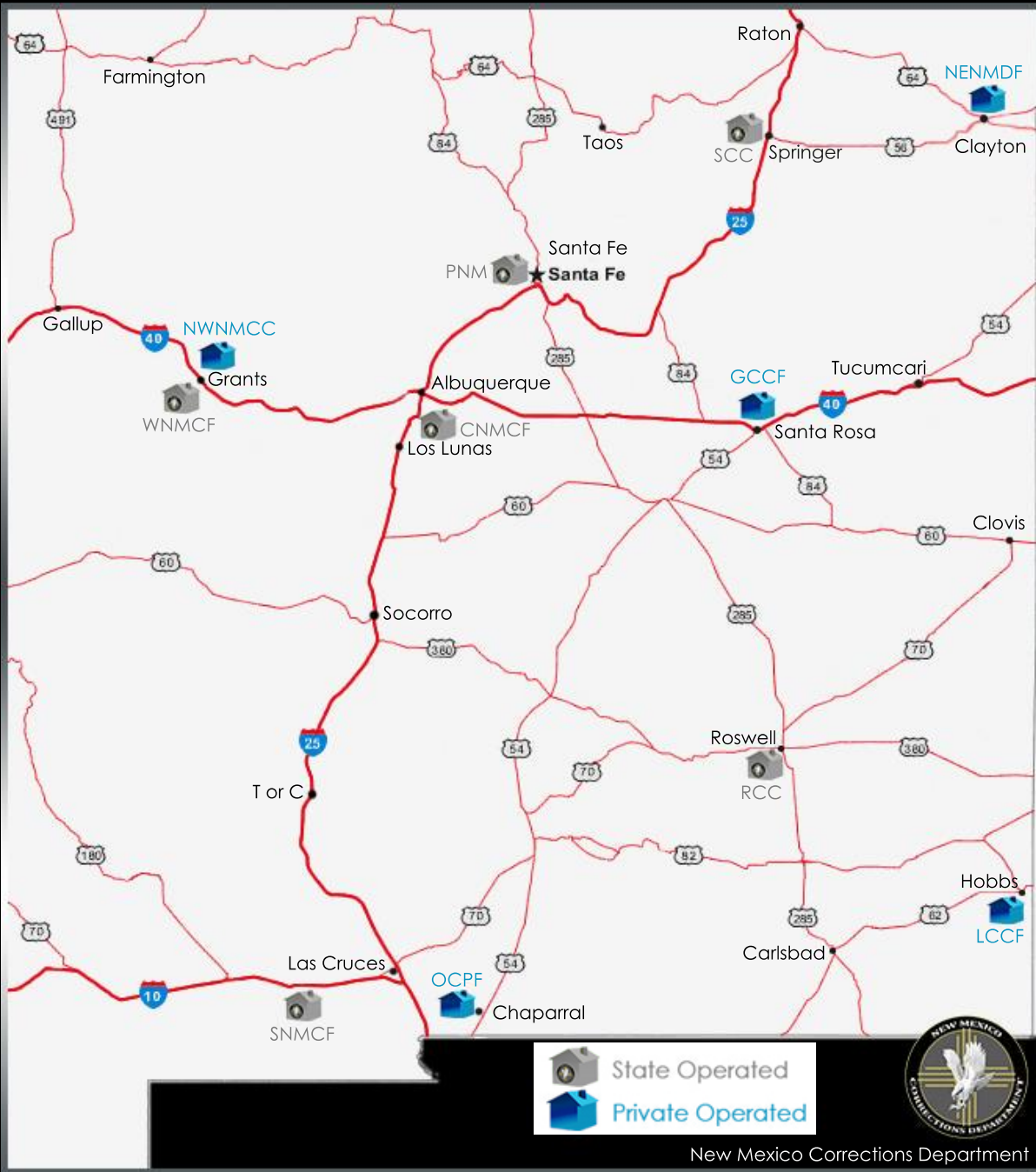
- Establish division
 - Collaboration of resources and efforts from IMAC and COM
 - The goal: to holistically approach every aspect of personal development, transition planning and successful outcomes for incarcerated persons and individuals on supervision.
- Explore and implement transition planning best practices
- Identify gaps in service and work to fill them in
 - Incarcerated people pre-release and
 - People under probation or parole supervision

Corrections Industries

- Active operations at 5 locations
 - Los Lunas-furniture manufacturing
 - Santa Rosa-Printing facility and sewing
 - Grants @ NWNMDF-sewing, embroidery, uniforms
 - Grants @ WNMCF-texting repair, sewing, cleaning supplies, patch production
- Business plans for expansion to Roswell, Springer, and Las Cruces are in the research and development stage
 - create more inmate work positions
 - incorporate with educational components and certifications where relevant
 - & include:
 - Framing and matting
 - Metal fabrication,
 - Sign creation-design, build, and printing
 - Upholstery
 - Agricultural partnerships

NMCD

Adult Prisons Facility Map



New Mexico Corrections Department

Facility Name, Location, Capacity, and Count

PUBLICLY OPERATED STATE FACILITIES

- Central New Mexico Correctional Facility, Los Lunas
 - Capacity-1221 , Count-859
- Northeast New Mexico Correctional Facility, Clayton
 - Capacity-628 , Count-448
- Penitentiary of New Mexico, Santa Fe
 - Capacity-864 , Count-677
- Roswell Correctional Center, Hagerman
 - Capacity-340 , Count-249
- Southern New Mexico Correctional Facility, Las Cruces
 - Capacity-768 , Count-664
- Springer Correctional Center, Springer
 - Capacity-437 , Count-238
- Western New Mexico Correctional Facility, Grants
 - Capacity-442 , Count-364

PRIVATELY OPERATED STATE CONTRACTED FACILITIES

- Guadalupe County Correctional Facility, Santa Rosa
 - Capacity-590 , Count-520
- Lea County Correctional Facility, Hobbs
 - Capacity-1293 , Count-1160
- Northwest New Mexico Correctional Facility, Grants
 - Capacity-708 , Count-384
- Otero County Prison Facility, Chaparral
 - Capacity-647 , Count-532

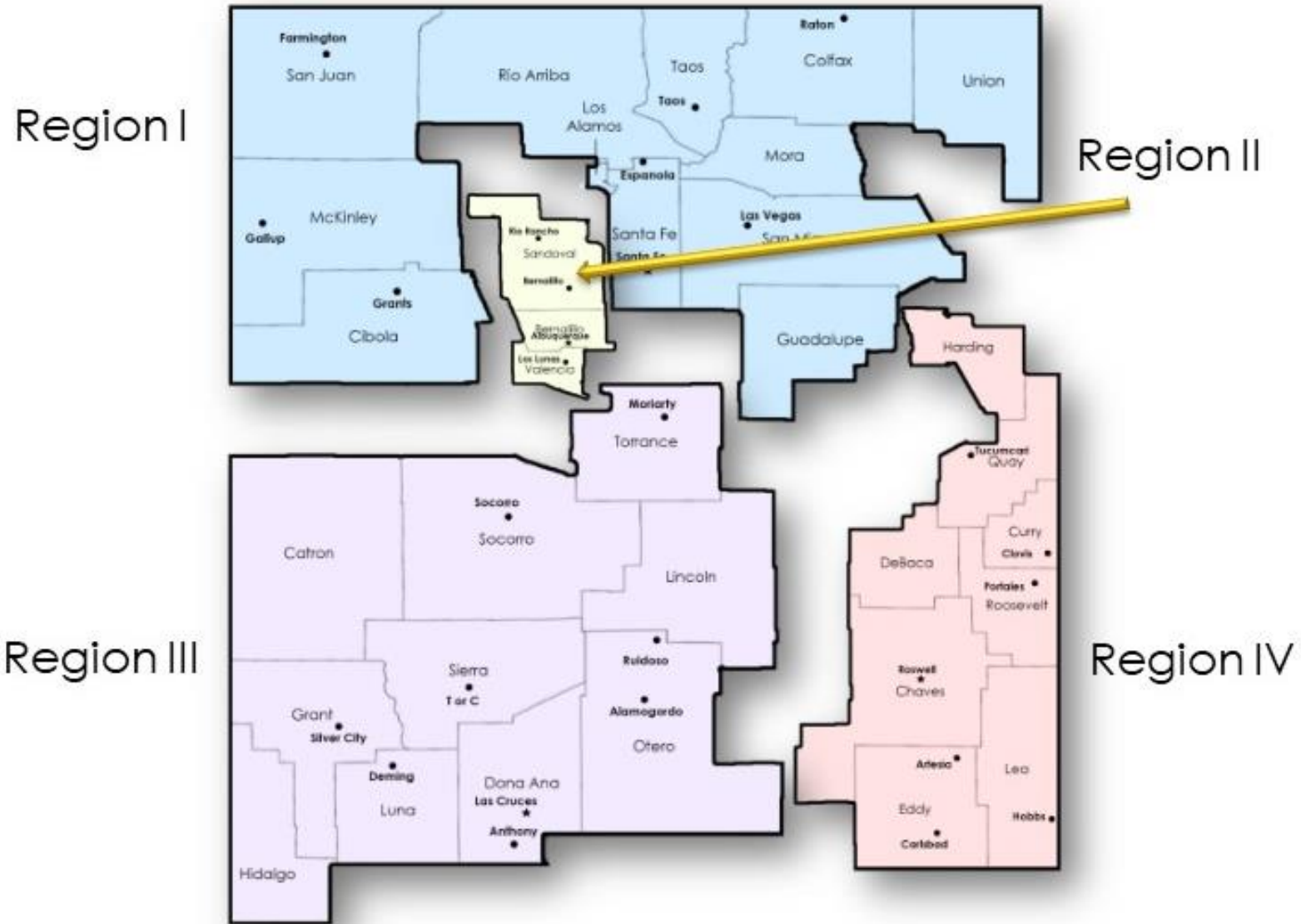
TOTAL CAPACITY: 7938

TOTAL COUNT 9/14/2020: 6095

NMCD

Probation and Parole

Region Map



Basic Budget Overview

- **Inmate Management and Control (IMAC)**

- FY21 Total Operating Budget
\$299,283,700
- Operation of 11 correctional institutions, inmate medical care, behavioral health services, institutional education and programming, supplies and equipment

- **Community Offender Management (COM)**

- FY21 Total Operating Budget
\$40,010,200
- Probation and Parole services, behavioral Health service contracts, support services and assistance for probationers and parolees

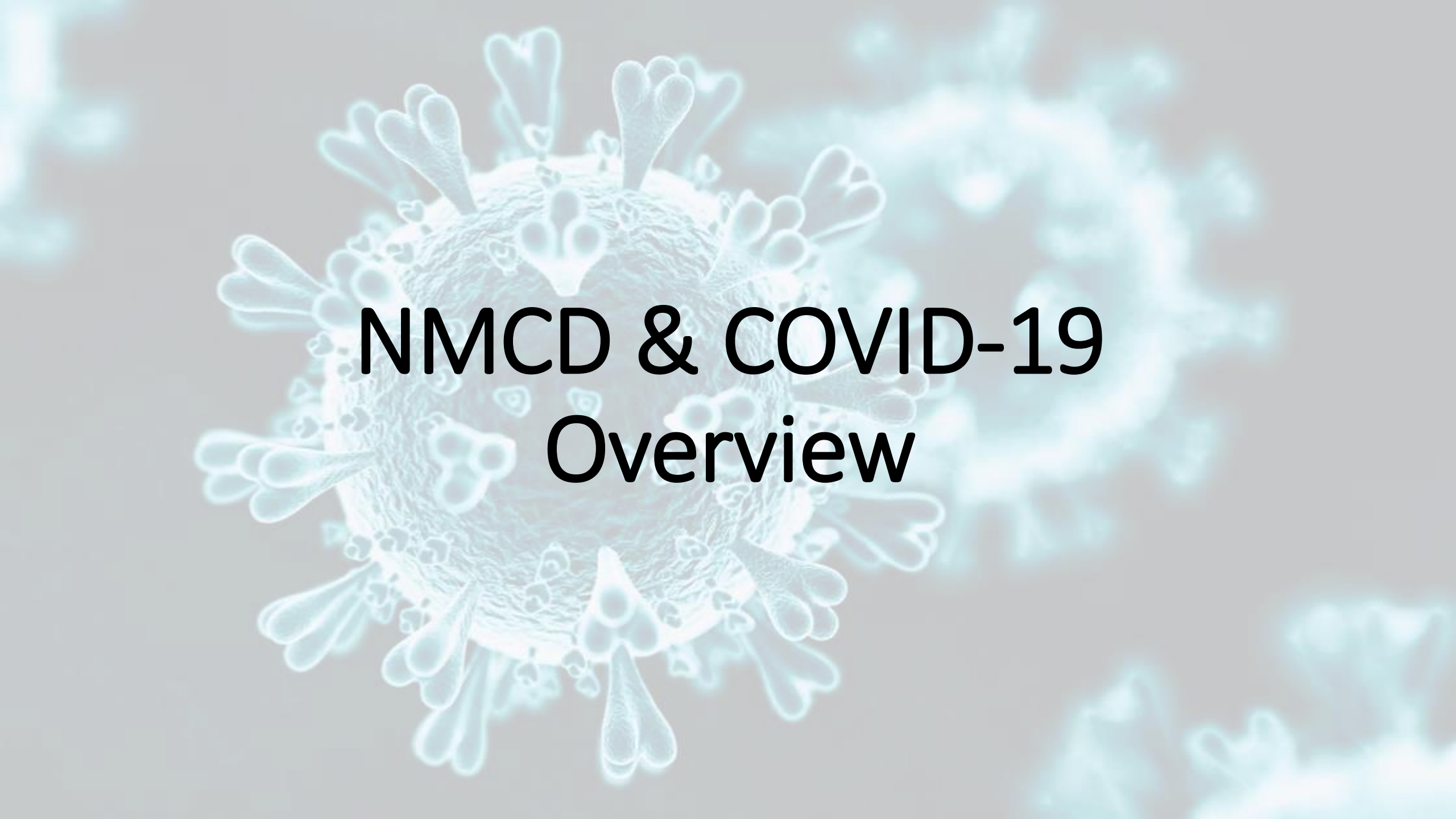
- **Program Support (PS)**

- FY21 Total Operating Budget
\$13,385,200
- Information technology, administrative services, general counsel, human resources, public relations, quality assurance, and the New Mexico Corrections Training Academy

- **Corrections Industries (CI)**

- FY21 Total Operating Budget
\$10,982,200 (enterprise division)
- Enhances education and vocational skills of inmates through productive involvement in enterprises and public works of benefit to state agencies and local public bodies.

- Upcoming Legislative Finance Committee Presentations:
 - Wednesday, October 28, 2020 budget request preview
 - Monday, December 7, 2020 full budget request



NMCD & COVID-19 Overview

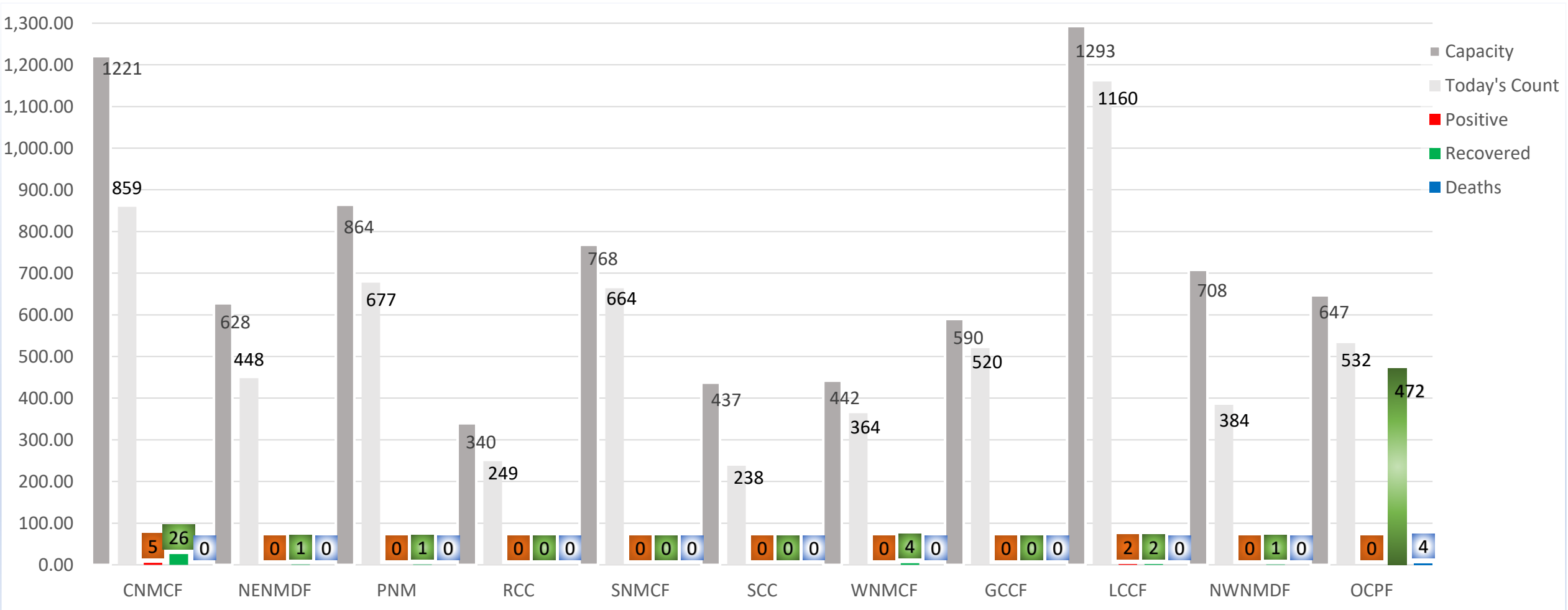
Proactive Steps & Preventive Measures

- Entry into institutions is limited to essential staff
- All staff and inmates wear face coverings
- Common areas and high touch surfaces are sanitized hourly
- Specialty sanitation equipment is available and utilized at all locations
- Information about COVID-19 and proper handwashing and hygiene is posted throughout facilities
- Inmate sanitation and hygiene issuance was doubled
- Social distancing in common areas is mandated
- All persons entering facilities are medically screened and temperature scanned in all locations
- Staff working in medical isolation and medical quarantine units do not work in other areas

Inmate Services

- Video services made available for:
 - Family visitation
 - Volunteer services
 - Education classes
 - Peer education
 - Release planning
 - Parole board and court hearings
- Added no cost phone access
- No interruption in services for:
 - Behavioral Health and Medical
 - Education and pre-release planning
 - Access to classification and records needs

COVID-19 Status by Facility



Totals- Tests & Results

Tests Conducted

- 25,066 Total
 - 11,840 Staff Tests
 - 13,226 Inmate Tests

Active Cases

- 24 active staff cases
- 7 active inmate cases

Recovered

- 66 staff recoveries
- 503 inmate recoveries

Testing

Staff testing

- 50% of facility staff are tested weekly
- Contact tracing
- Rapid Response

Inmate Testing

- 100% of intakes are tested and placed in quarantine for 14 days upon arrival
- 100% of releases are tested prior scheduled departure
- Rapid response
- As recommended by medical staff



THANK YOU