



WELCOME TO CLOVIS

NEW MEXICO ECONOMIC DEVELOPMENT AND POLICY INTERIM COMMITTEE
OCTOBER 12, 2021



PAST SUCCESS



Southwest Cheese

- Originally constructed in 2004 with design capacity of 6.8M lbs of milk per day
- Plant expansion in 2010 to allow for 10.5M lbs of milk per day
- Most recent expansion in 2018 to allow for 14.15M lbs of milk per day
- Approximately 450 employees



PAST SUCCESS



Quality Liquid Feeds

- Located to Clovis in 2012
- Produces high-quality calcium suspension feeds
- At least 12 full-time employees at a wage rate of at least 150% of the federal minimum wage



RECENT SUCCESS



Cummins

- Recent expansion
- Retained 38 positions
- Added at least 10 new positions



RECENT SUCCESS



FritoLay Distribution Center

- State-of-the-art distribution center opened in 2021
- CIDC worked with site selection company to locate in Clovis



RECENT SUCCESS



Clovis Regional Airport

- TSA Operations
- Regional Jet
- Flights to Denver & Dallas



RECENT SUCCESS



Eastern New Mexico Water Utility Authority



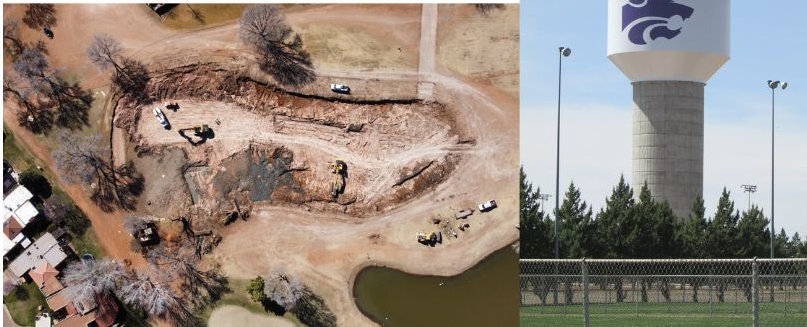
- Phase 1 - Intake facility at Ute Reservoir - completed
- Phase FW/2 - Cannon to Clovis - completed
- Phase FW/3 - Cannon to Portales - under construction



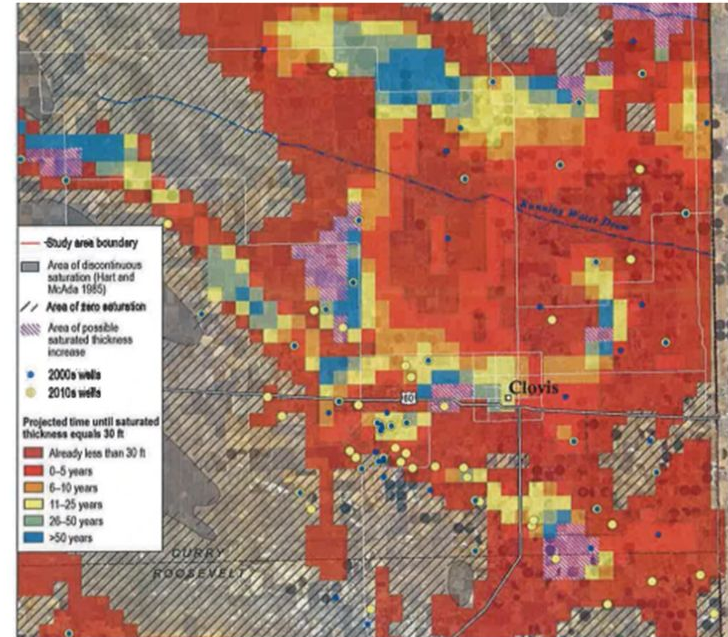
RECENT SUCCESS

City of Clovis Reuse Project

- Phase 1A, 1B, & 1C completed
- Phase 1D nearing completion
- Phase 2 Ponds completed
- Phase 2 Transmission line under construction



Ogallala Land & Water Conservancy



RECENT SUCCESS



Downtown/ Main Street



OUTDOOR RECREATION

Ned Houk Park

- 3,200-acre park
- Only 370 developed
- Features Ned Houk Motor Speedway, the Model Airplane Club, disc golf, and a herd of buffalo
- Application submitted to the **Outdoor Recreational Trials + Grant Program** to master plan remaining acreage



OUTDOOR RECREATION

Clovis Wing-Shooting Complex & Archery Range

- Two classrooms
- Indoor & outdoor archery range
- Indoor airsoft rifle range
- Outdoor sporting clay trail
- Four trap & skeet bays



OUTDOOR RECREATION

Summer Youth Program

- **Outdoor Equity Fund** grant in the amount of \$20,000
- Serves children from kindergarten through 5th grade
- 8 week program focused on environmental education
- Beginning Summer 2022



OUTDOOR RECREATION

Colonial Park Golf Course

- City of Clovis purchased in 2012
- 18-hole golf course
- Recent back 9 irrigation improvement renovation - \$1.3 million
- Reuse pond improvements funded in partnership with Water Trust Board



OUTDOOR RECREATION

Quality of Life

2nd Largest Zoo in New Mexico



Splash Pad



Hillcrest Park



Dog Park

LOOKING FORWARD



Clovis Regional Airport

Thank you for State LEDA
funding to construct the
airport water transmission line!

\$2.1 million



LOOKING FORWARD

City of Clovis Reuse Project

- Estimated \$1.5 million needed to complete overall \$16 million project



ENMWUA

EASTERN NEW MEXICO WATER UTILITY AUTHORITY

801 Pile St, Suite 214, Clovis, NM 88101

575-935-4262

- FW1 - Cannon to Water Treatment Plant
- Texico Lateral
- RW1 - Easement Acquisition
- Federal Infrastructure Bill

LOOKING FORWARD



- US 60/84 improvements
- Prince Street to MLK Boulevard
- Estimated \$43 million
- October 2022

City of Clovis 7th Street Project

- Phase 3 funded by **Transportation Project Fund** in the amount of \$5.9 million
- Maple to Main Street



LOOKING FORWARD

Retail

Economic
Development
Plan



retail strategies

LEDA for
Retail



QUESTIONS?

