



Agriculture on Tribal Lands in New Mexico



NMDA

NEW MEXICO DEPARTMENT OF AGRICULTURE

Vision

NMDA benefits the public by promoting the viability and advancement of New Mexico agriculture and affiliated industries.

Mission

NMDA promotes a fair marketplace, food protection, marketing, and economic development; supports the beneficial use and conservation of natural resources; and works cooperatively with the public and private sectors.



New Mexico agriculture is robust.

NMDA recognizes the 23 tribes in New Mexico and continues to work with its tribal partners through formal solicitations of services as well as through outreach efforts. As a consumer-producer service and regulatory agency, NMDA will continue to:

- Promote the viability and advancement of New Mexico agriculture and affiliated industries.
- Promote a fair marketplace.
- Promote food protection.
- Promote marketing and economic development.
- Support the beneficial use and conservation of natural resources.
- Work cooperatively with the public and private sectors.



NMDA works with tribal leaders, agencies, organizations, and businesses on issues related to the following:

- Agricultural biosecurity
- Produce safety
- Wildlife and endangered species
- Organic operation advisory support
- Pesticide regulation
- Water and other natural resources
- Farmers' markets
- Retail petroleum support

The Director's Office also coordinates tribal entities and USDA disaster assistance and recovery programs.





**New Mexico Farms with American Indian
or Alaska Native Producers**

Farms with American Indian/Alaska Native Producers Overview, 2017

	Farms with American Indian/Alaska Native Producers	All Farms
Number of farms	6,211	25,044
Land in farms (acres)	7,996,656	40,656,836
Average size of farm (acres)	1,287	1,624

See 2017 Census of Agriculture, U.S. Summary and State Data, for complete footnotes, explanations, definitions, commodity descriptions, and methodology. May not add to 100% due to rounding.

Share of Sales by Type (%)

Crops	53
Livestock, Poultry, and products	47

Land in Farms by Use (%)

Cropland	2
Pastureland	88
Woodland	10
Other	1

Livestock Inventory (Dec 31, 2017)

Broilers and other meat-type chickens	154
Cattle and calves	76,557
Goats	14,728
Hogs and pigs	336
Horses and ponies	10,179
Layers	6,266
Pullets	1,980
Sheep and lambs	51,642

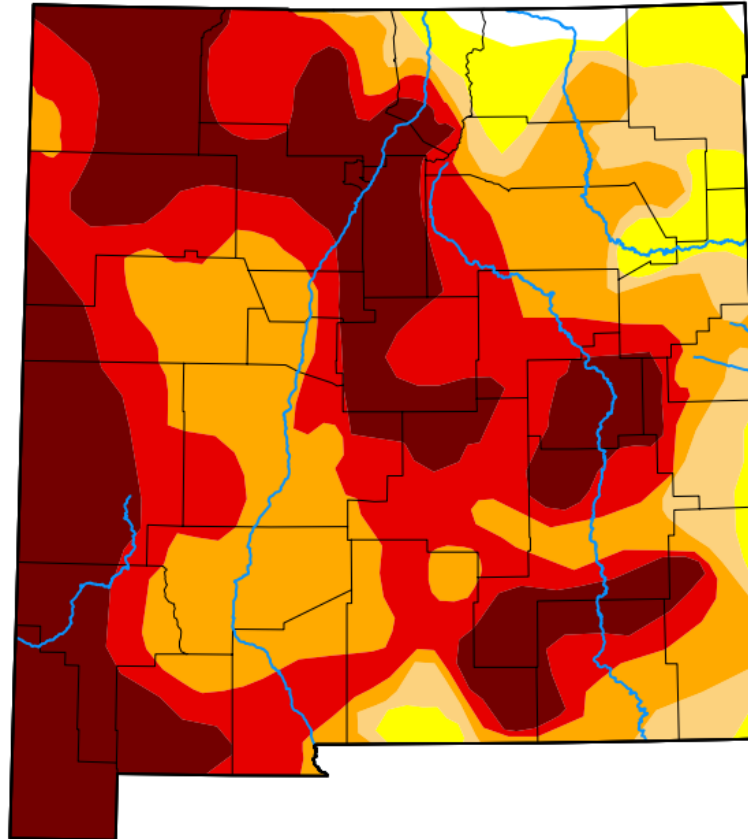
Percent of New Mexico Farms
with American Indian or Alaska
Native Producers that:

Have internet access	32
Sell directly to consumers	2
Hire farm labor	11
Are family farms	92



Drought

U.S. Drought Monitor New Mexico



June 29, 2021
(Released Thursday, Jul. 1, 2021)
Valid 8 a.m. EDT

Drought Conditions (Percent Area)

	None	D0-D4	D1-D4	D2-D4	D3-D4	D4
Current	1.04	98.96	92.88	84.87	58.80	30.47
Last Week <i>06-22-2021</i>	1.04	98.96	94.11	87.49	63.06	31.84
3 Months Ago <i>03-30-2021</i>	0.00	100.00	100.00	99.35	79.88	53.28
Start of Calendar Year <i>12-29-2020</i>	0.00	100.00	99.97	99.59	82.26	53.20
Start of Water Year <i>09-29-2020</i>	0.00	100.00	99.92	73.65	39.88	2.90
One Year Ago <i>06-30-2020</i>	24.94	75.06	52.71	41.32	11.35	0.00

Intensity:

None	D2 Severe Drought
D0 Abnormally Dry	D3 Extreme Drought
D1 Moderate Drought	D4 Exceptional Drought

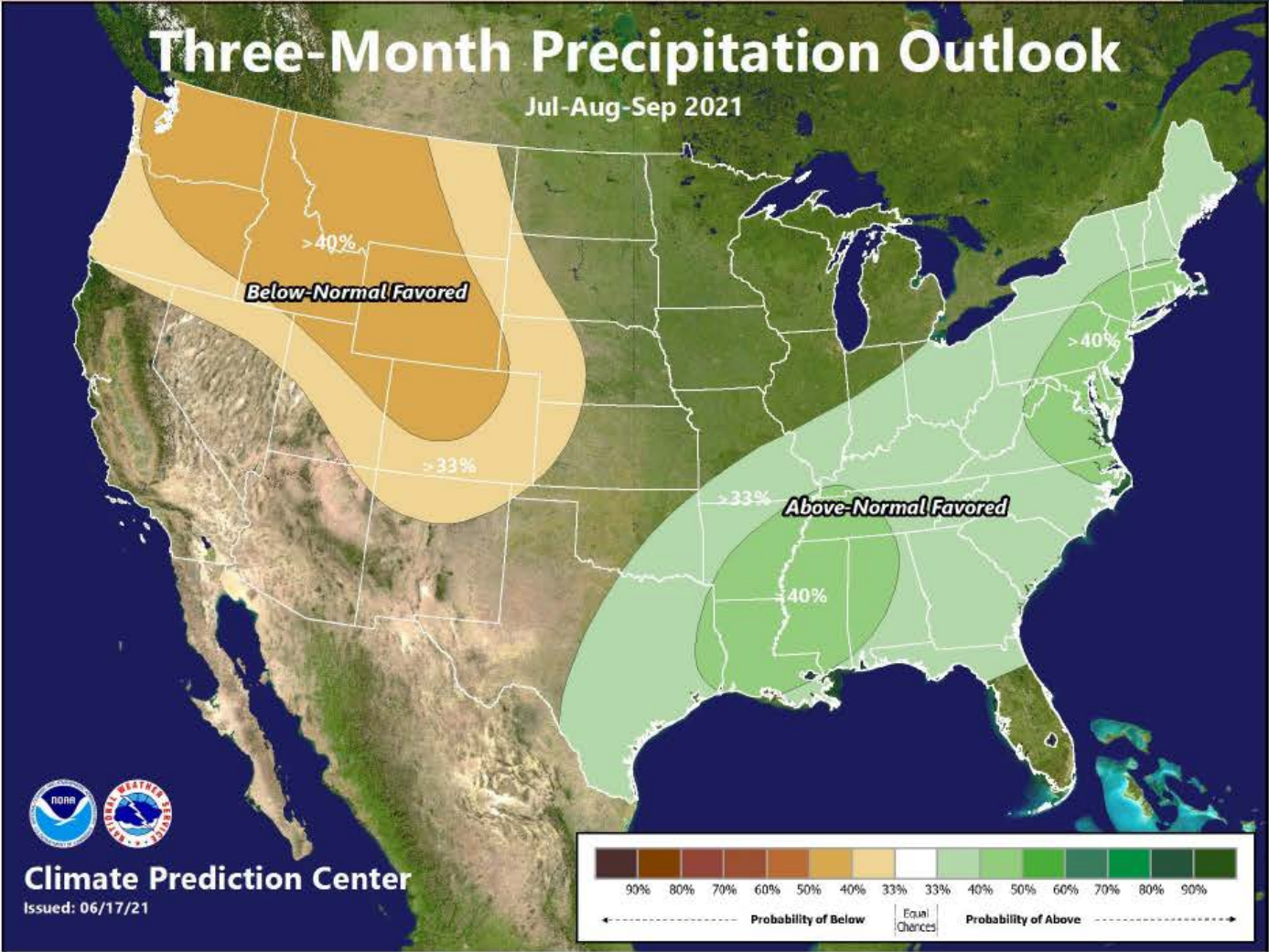
The Drought Monitor focuses on broad-scale conditions. Local conditions may vary. For more information on the Drought Monitor, go to <https://droughtmonitor.unl.edu/About.aspx>

Author:

Deborah Bathke
National Drought Mitigation Center



droughtmonitor.unl.edu



Precipitation below normal N NM

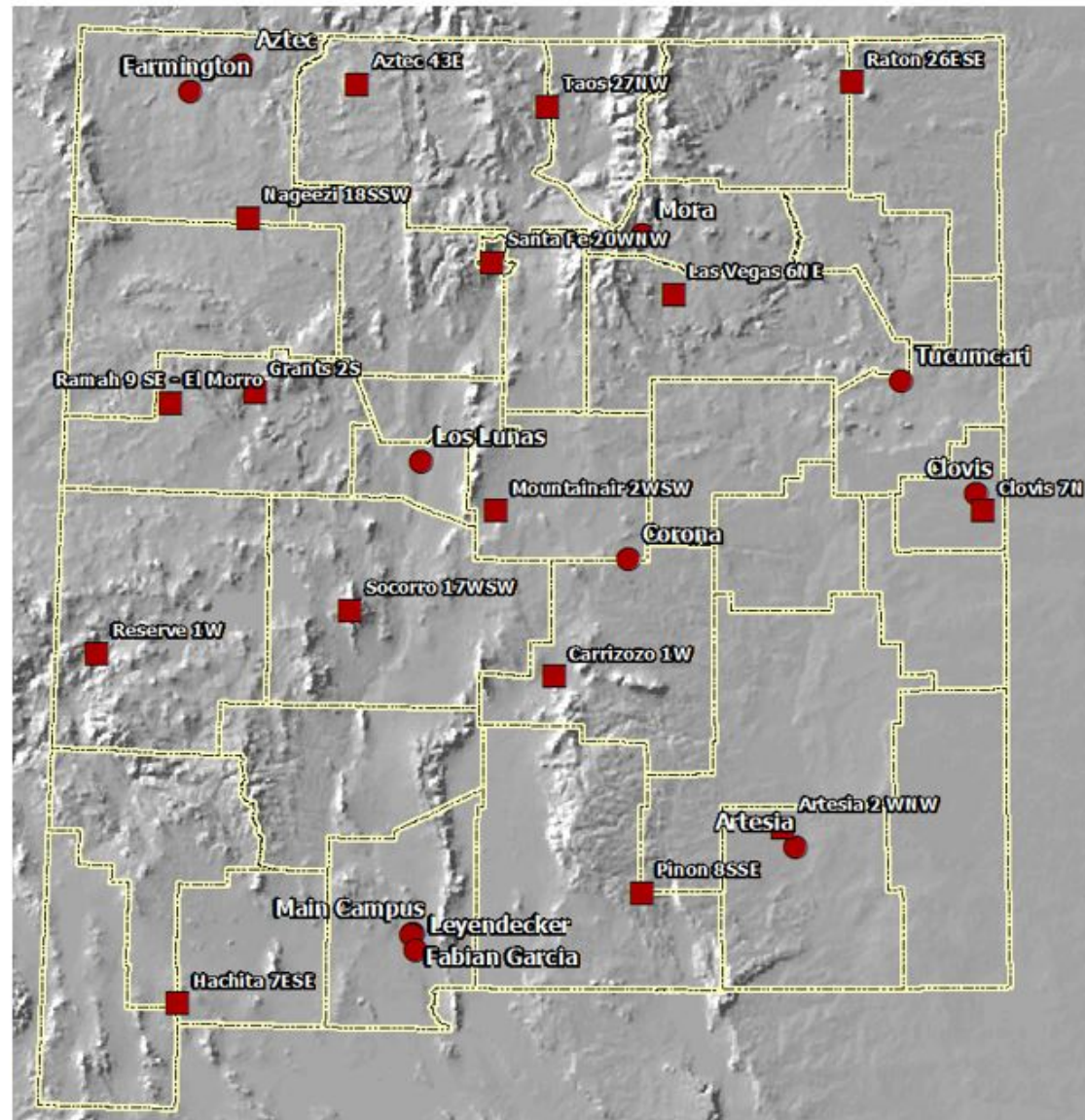


Figure 1. Current ZiaMet weather collection network. Circles are agricultural stations and squares are ZiaMet-CRN Climate Reference Network stations.

DROUGHT RESOURCES

- NMDA <https://www.nmda.nmsu.edu/drought-resources/>
- Climate Hubs <https://www.climatehubs.usda.gov/dealing-drought>
- USDA's Natural Resources Conservation Service Drought Resources <https://www.nrcs.usda.gov/wps/portal/nrcs/detailfull/national/home/?cid=stelprdb1245689>
- USDA's Farm Service Agency Disaster Assistance Programs <https://www.fsa.usda.gov/programs-and-services/disaster-assistance-program/index>
- New Mexico State University College of Agricultural, Consumer and Environmental Sciences <https://aces.nmsu.edu/drought/usda.html>
- National Integrated Drought Information System <https://www.drought.gov/>



Questions?



NMDA

NEW MEXICO DEPARTMENT OF AGRICULTURE