



U.S. DEPARTMENT OF
ENERGY

OFFICE OF
**ENVIRONMENTAL
MANAGEMENT**



LANL Legacy Environmental Cleanup



ENVIRONMENTAL MANAGEMENT
SAFETY ♦ PERFORMANCE ♦ CLEANUP ♦ CLOSURE

Michael Mikolanis, Manager
Environmental Management
Los Alamos Field Office
November 12, 2021



- Continued shipments of legacy waste at LANL
- Characterization and control of the hexavalent chromium plume
- Completion of Middle DP Road Site cleanup
- Site investigation and cleanup
 - Southern External Boundary Campaign
 - Pajarito Watershed Campaign
- Stakeholder and community engagement





➤ Highlights

- 33 legacy CH-TRU waste shipments to WIPP in FY21
- 26 legacy CH-TRU shipments to WIPP in CY21
- 389 m³ of LLW shipped offsite (FY21)
- 172 m³ of LLW processed (FY21)
- 140 m³ of TRU processed (FY21)

➤ Looking Forward

- Resume operations at Area G
- Dome 231 operations start-up
- Corrugated metal pipe retrievals



TRUPACT loading of TRU waste shipment at Radioassay and Nondestructive Testing facility

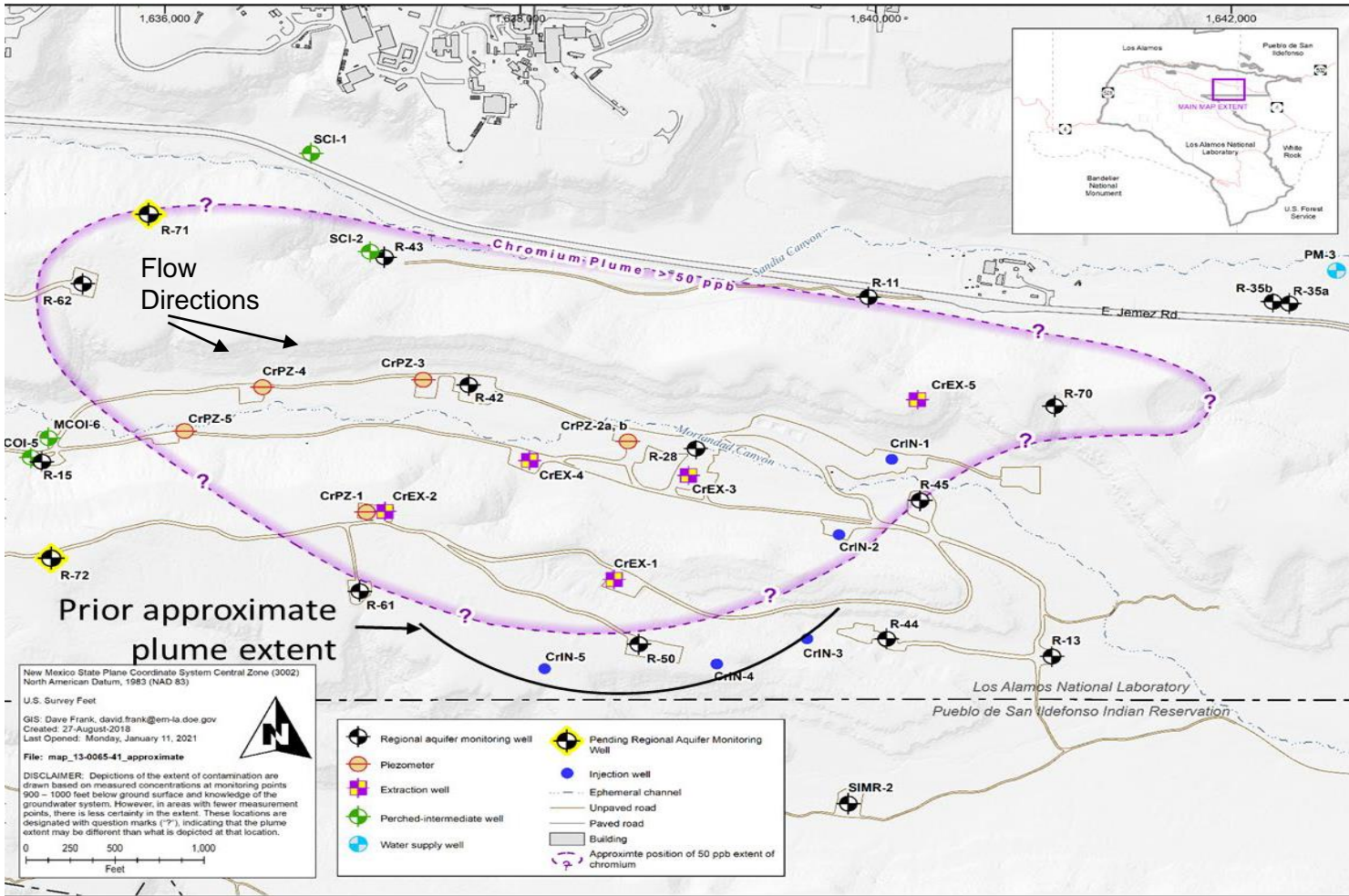


Legacy waste operations at TA-54 Area G at LANL





Hexavalent Chromium Plume Control & Characterization





➤ Highlights

- In first 4 years of IM operation, the leading plume edge retreated from the southern boundary by ~500 ft
- New groundwater monitoring wells R-71 and R-72
 - Drilled to total depth, designs completed, and installation is underway
 - Completes two proposed FY22 Appendix B milestones

➤ Looking Forward

- New monitoring well R-73 will further our understanding of the lateral and vertical extent of hexavalent chromium plume downstream of monitoring well R-70
- NMED has proposed other locations we are evaluating
- DOE's bias for action: develop a strategy that transitions from groundwater characterization to defining a final remedy





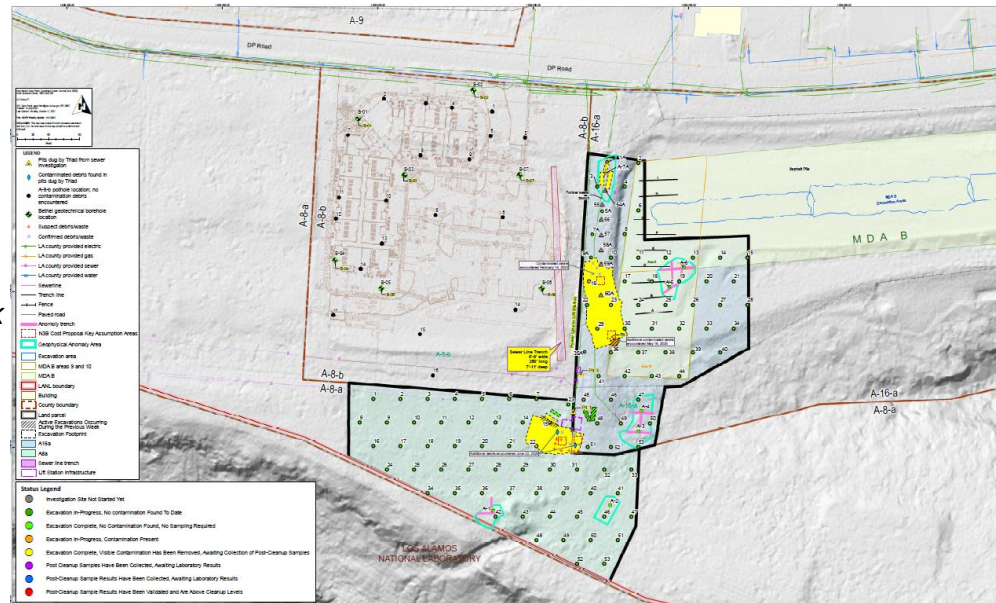
➤ Status as of November 5, 2021

- Excavation of all 124 planned locations is complete; backfilling has begun
- A need for large-scale remedial action is not expected due to the extended excavation of buried contaminated debris that was performed at the known contaminated sites
- Confirmatory sampling is being conducted to determine if additional excavation will be required

➤ Looking Forward

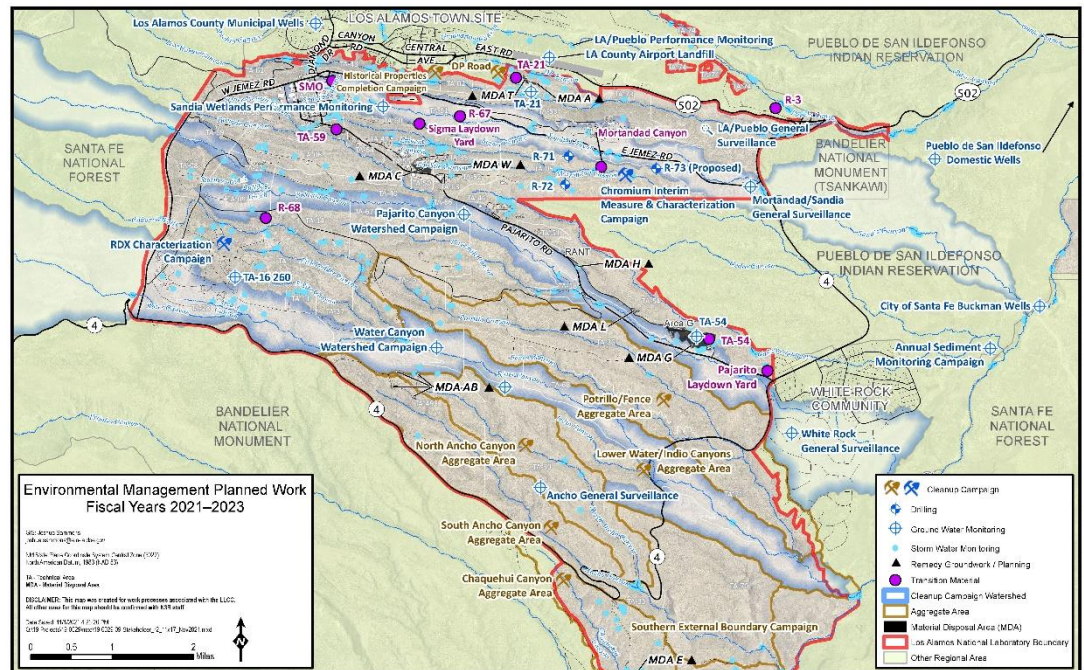
- Assessment report due to NMED by April 30, 2022

*Middle DP Road Site Fieldwork
October 7, 2021*





- Continue Southern External Boundary Campaign
 - 113 Sites, Campaign anticipated completion in FY23
- Initiate Pajarito Watershed Campaign
 - 207 Sites Campaign





Questions and Answers

