



Transitioning the World to Renewable Energy

Water and Natural Resources Committee

Update on the SunZia Transmission Project

November 9, 2020



A leader
in developing
assets in
dynamic global
energy markets



Pattern Energy is a leader in developing renewable energy and transmission assets. From a global headquarters in San Francisco to an operations control center in Houston, we work on projects that range from the earliest stages of development to the repowering of older facilities.

Our team has a wealth of experience in identifying potential sites, engaging with communities, and expertly navigating the processes of permitting, environmental mitigation, meteorological assessment, risk management, and finance to build great projects. Using the industry's most advanced technologies, we provide our customers with renewable energy that is affordable and reliable.

Pattern Energy has offices in San Francisco, San Diego, Houston, New York and New Mexico in the US; Toronto, Canada; Mexico City, Mexico; Santiago, Chile; and Tokyo, Japan.



Global Portfolio & Company Values



Environment

We aim to exceed industry standards in mitigating environmental impacts and advancing best practices.



Community

We participate in and contribute to our local project communities.



Safety

Our top priority is protecting the safety of the public, our employees, and everyone who works with us.



Projects and Facilities



Corporate Offices

- Headquarters
- Office

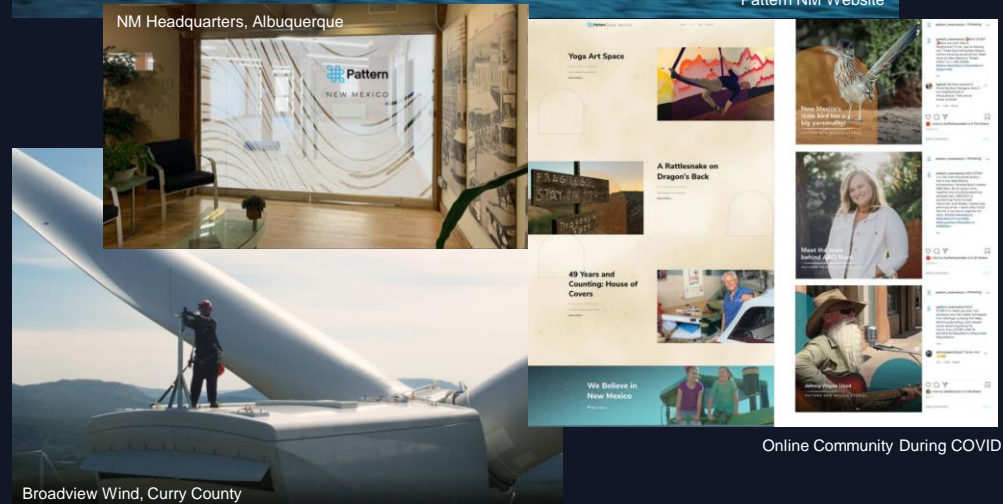
Pattern Energy

Pattern Energy is one of the world's largest privately-owned developers and operators of wind, solar, transmission and energy storage projects. Its operational portfolio includes 28 renewable energy facilities that use proven, best-in-class technology with an operating capacity of 4.4 GW in the United States, Canada and Japan. Pattern Energy is guided by a long-term commitment to serve customers, protect the environment, and strengthen communities.

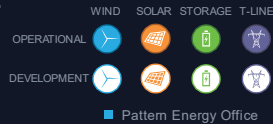
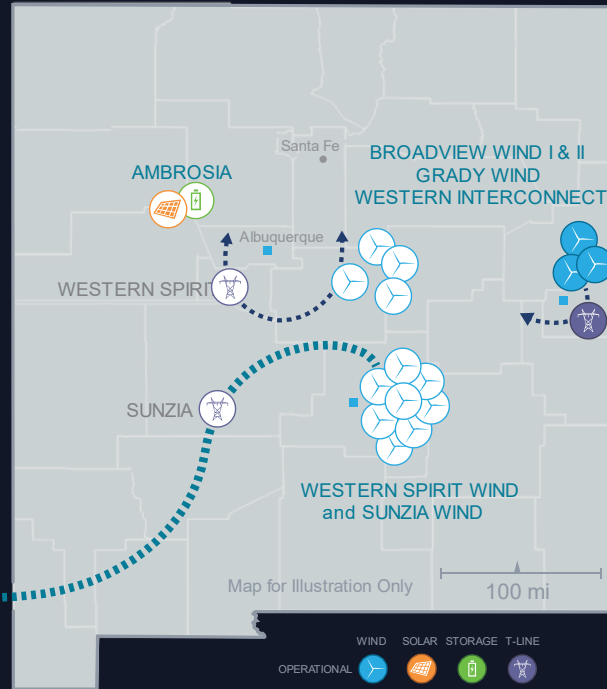
Projects shown are only those under construction or in advanced public stages, and maps do not represent the full extent of Pattern Energy's project pipeline. Pattern Energy retains whole or partial ownership of most of its operational facilities. Some transmission projects including Western Spirit and SunZia are owned by third-party development partners. Maps are for illustration purposes only, countries are not drawn comparatively to scale.

Pattern in New Mexico

- \$1.62 Billion invested to date in wind energy
- \$2+ Billion new investments planned in 2020
- New Mexico headquarters, Albuquerque
- Field offices in Curry County and Corona
- Responsible for over 30 permanent jobs in development and wind facility operation
- Responsible for thousands of construction jobs:
 - **650+** jobs 2016-2019, Broadview & Grady Wind
 - **1,000+** jobs 2020-2021, Western Spirit Wind and Western Spirit Transmission
 - **3,300+** jobs expected before 2024, SunZia Wind and SunZia Transmission

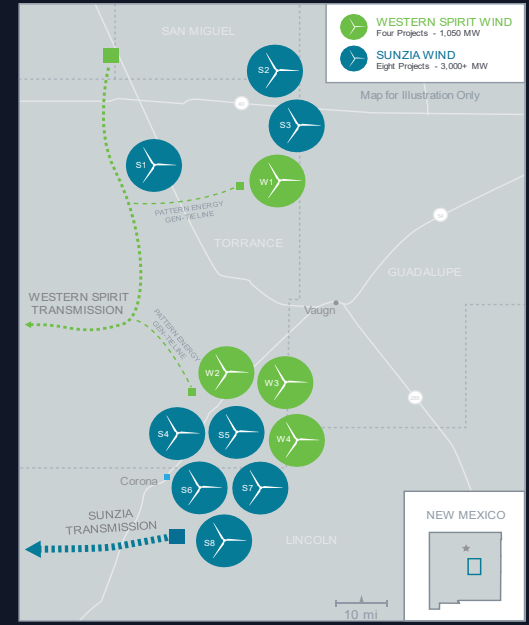


New Mexico Portfolio



544 MW
Operating Wind
and Transmission

4,000+ MW
Renewable Power
in Development



2016 – 2019

- Broadview & Grady Wind Farm
 - 544 MW currently in operation
 - Moss Adams performed a retrospective analysis of the economic and fiscal impacts- nearly \$1.6 billion in direct, indirect & induced economic impacts

2016 – 2021

- Western Spirit Wind
 - 1,050 MW in development
 - In operation December 2021
 - Economic analysis report – November 2020
- Western Spirit Transmission
 - Co-development with the New Mexico Renewable Energy Transmission Authority (RETA)
 - In operation December 2021

2016 – 2024

- 3,000 MW SunZia Wind in development
 - In operation December 2024



Contact Information

Jeremy Turner – Director, NM Project Development

Jeremy.Turner@patternenergy.com

Albuquerque Office:
Pattern Energy
317 Commercial St. NE Suite 100
Albuquerque, NM 87102

