



# Economic Development Update

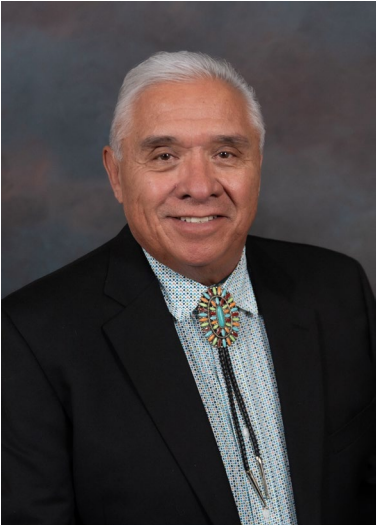
*BUILDING A STRONGER COMMUNITY*



# San Juan County Commission



**Terri Fortner**  
Commission Chair



**Sam Gonzales**  
Chair Pro-Tem



**Glojean Todacheene**  
Commissioner



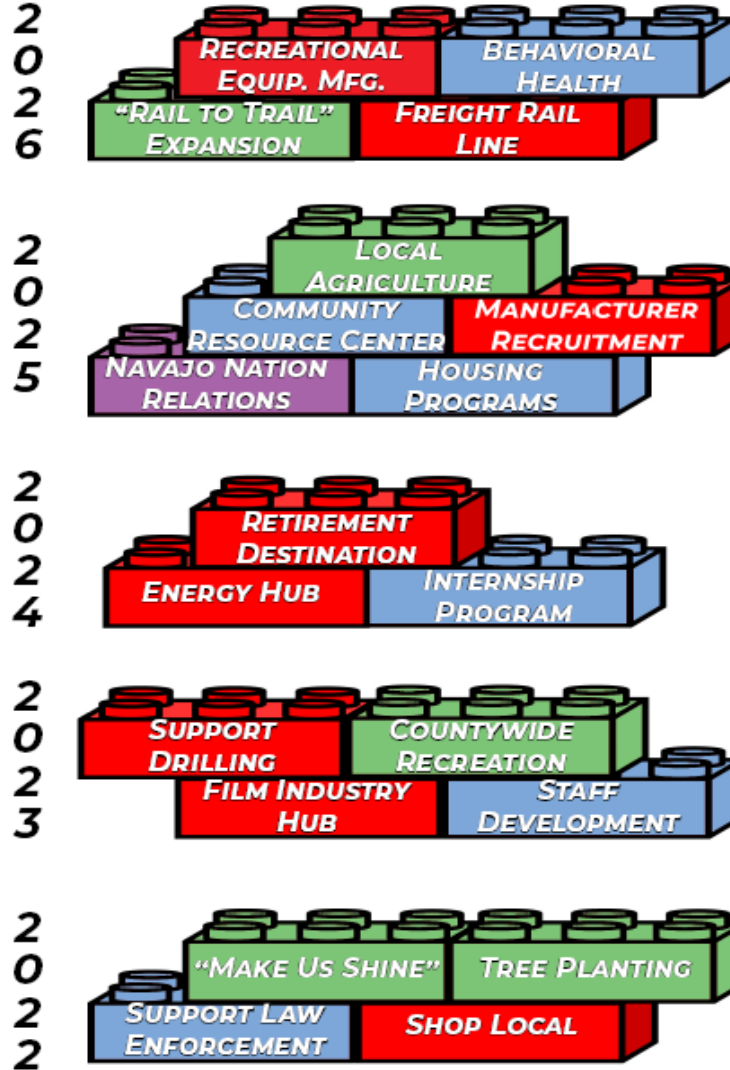
**Gary McDaniel**  
Commissioner



**Sandra Lanier**  
Commissioner



**5-year Strategic Plan**



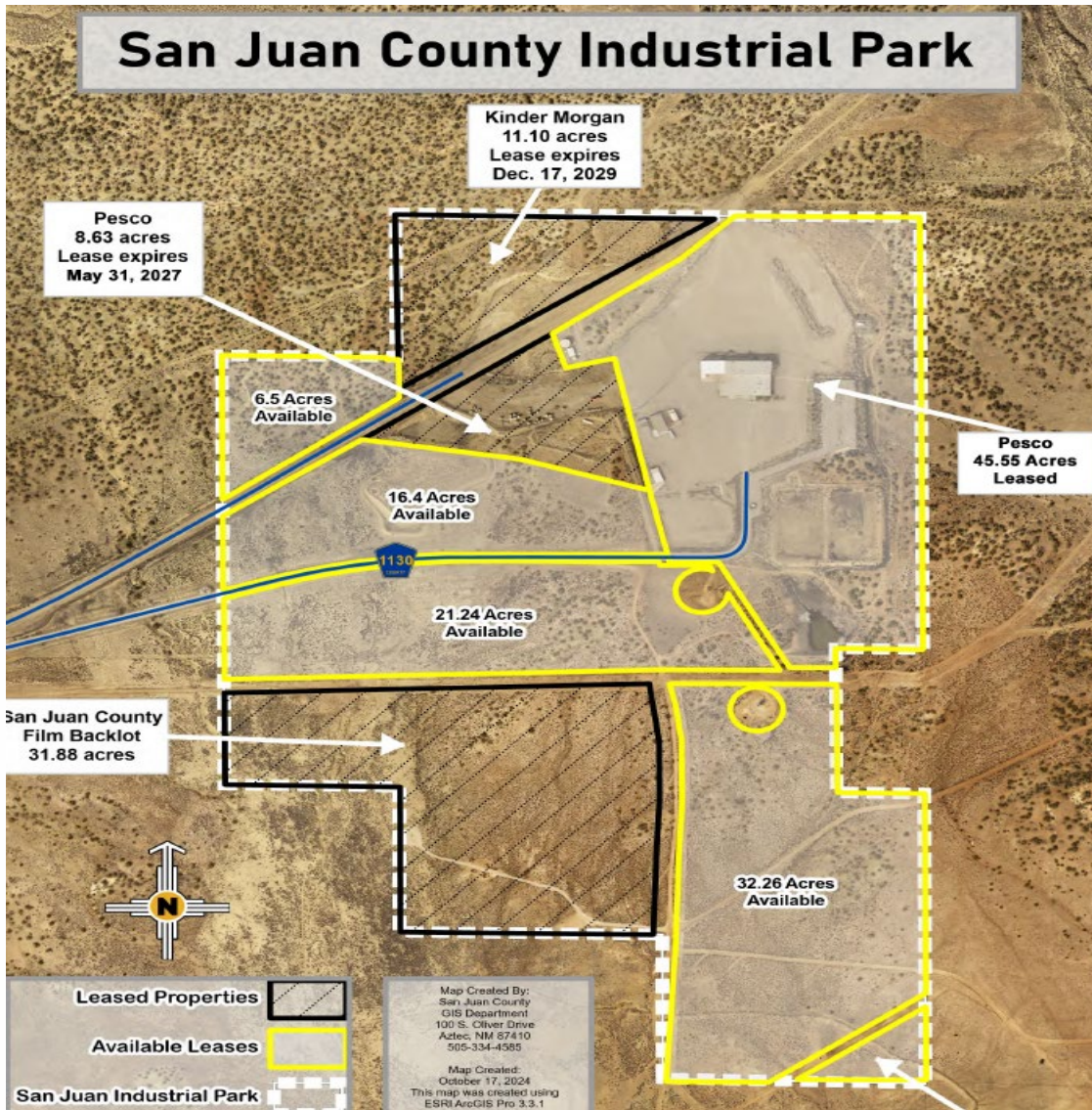
**ECONOMY**

**PLACE**

**PEOPLE**

**RELATIONS**

# San Juan County Industrial Park



New Tenant as of September 1<sup>st</sup>:



## Economic Impacts

- New Water Treatment Product Line
- 84 new economic based jobs
- Avg. wage of \$29/hour
- \$5.1 million in estimated payroll over 3 yrs.



# San Juan County Industrial Park

## Investment in Infrastructure made the Difference

### EDA Economic Adjustment Assistance Grant

- \$1,632,500 Federal Funding
- \$699,760 County Funding
- Facility Upgrades- ADA, HVAC, Lighting, Roof, Broadband Connectivity

### NM LEDA Grant

- \$4,300,000 State Funding
- Natural gas line 11 miles to the facility
- Incredibly big kudos to Mark Roper for making this piece of infrastructure possible!



# San Juan County Solar Projects

## DE Shaw Renewable Investments

San Juan Solar Project (power to PNM)

- 200 MW Solar, 100 MW Battery
- \$550 million

Foxtail Flats (power to Los Alamos County and Labs)

- 170 MW Solar, 80 MW Battery
- \$362 million

Four Mile Mesa (awaiting PPA)

- 200 MW Solar, 100 MW Battery
- \$459 million

## Engie Solar

- 360 MW Solar, 360 MW Battery (awaiting PPA)
- \$900 million (estimated)



# Lack of Transportation Infrastructure in the Four Corners Area



# AN INDEPENDENT NATION

SUPPORTING THE NAVAJO NATION'S ECONOMIC SOVEREIGNTY

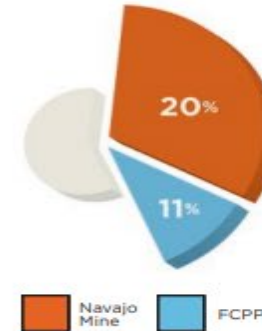
NTEC is devoted to providing sustainable financial and economic resources to its sole shareholder, the Navajo Nation. Our driving purpose is to give the Nation financial strength, jobs, and community benefits through sovereignty over its natural resources.

Support	Total NTEC Contribution
NTEC Taxes & Royalties	\$46,680,000
Employment Wages	\$55,770,000
Navajo Vendors/Contractors	\$7,920,000
Scholarships, Education & Other Community Giving	\$1,570,000
NTEC Community Benefit Fund (CBF)	\$250,000
CHRP	\$2,390,000

**\$114,580,000**

**NTEC ECONOMIC IMPACT ON THE NAVAJO NATION IN 2023**

NTEC's total economic contribution to the Navajo Nation exceeded \$114 million in 2023. This included taxes and royalties paid by NTEC from the Navajo Mine, Four Corners Power Plant, and NTEC Helium, as well as payroll to employees on the Nation, contracts with qualified Navajo contractors, and charitable donations. This year's contributions to the Navajo Nation reflected our continued commitment to the Nation's prosperity.



**31%**

**OF THE 2023 NAVAJO NATION GENERAL FUND**

came from the combined contributions of the Navajo Mine and Four Corners Power Plant

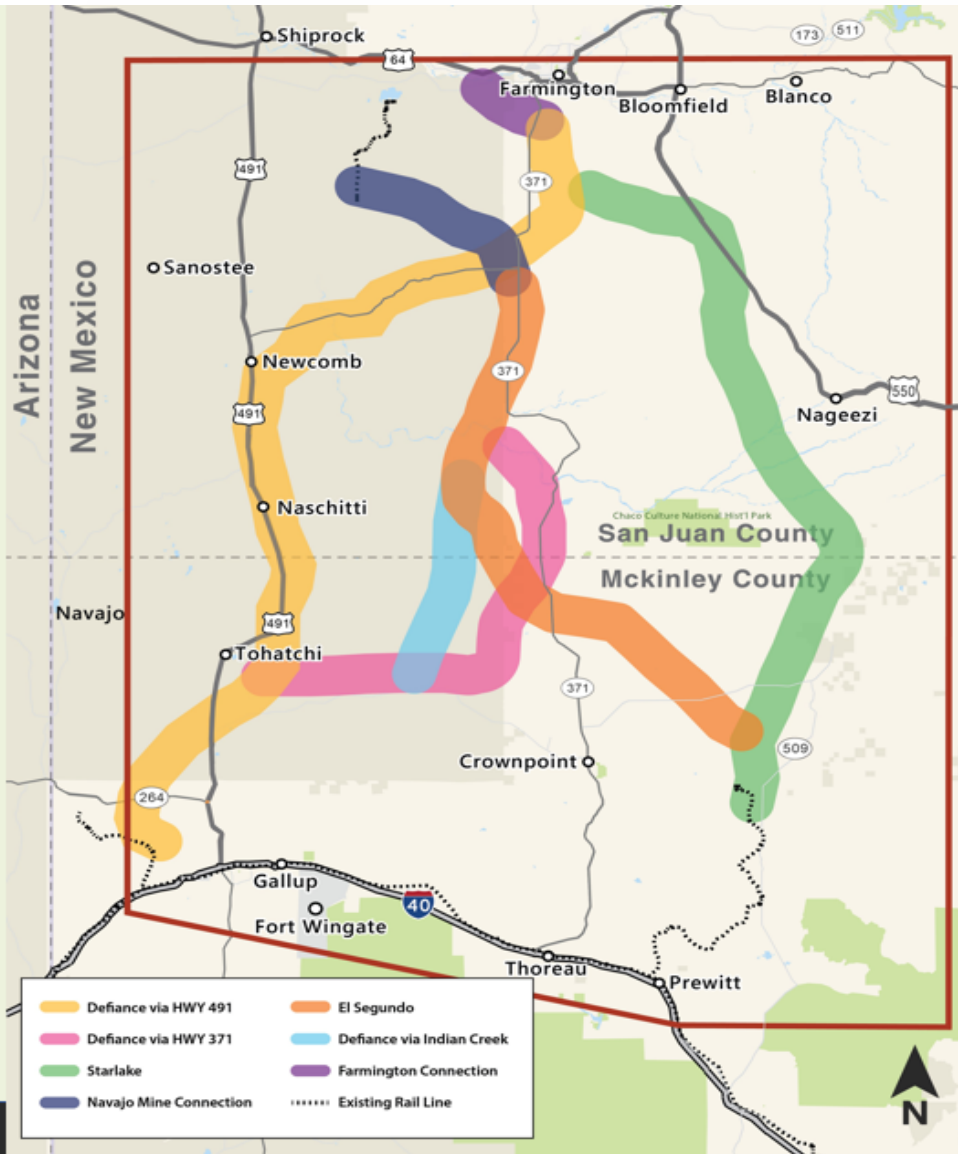
Support	Navajo Mine	FCPP
Taxes & Royalties	\$43,810,000	\$23,090,000
Employment Wages	\$52,270,000	\$33,380,000
Navajo Vendors/Contractors	\$7,540,000	\$2,780,000

**\$162,870,000**

**NAVAJO MINE & FCPP ECONOMIC IMPACT ON THE NAVAJO NATION IN 2023**



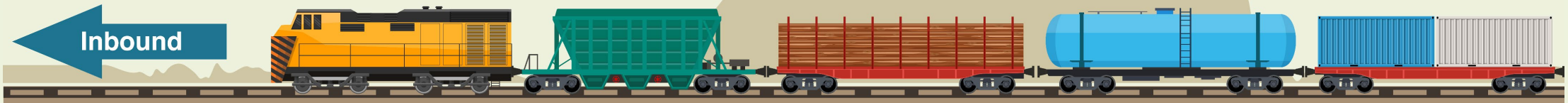
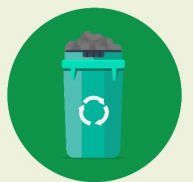
# Four Corners Freight Rail Project



## Recommended Alignment Routes



# Potential Goods Shipped By Rail



# Letters of Support of the CRISI Grant Application

- New Mexico Congressional Delegation
- Navajo Nation
- New Mexico Department of Transportation

**CONGRESS OF THE UNITED STATES**  
DELEGATION OFFICE  
STATE OF NEW MEXICO  
HART SENATE OFFICE BUILDING  
WASHINGTON, D.C. 20510

June 14, 2024

The Honorable Pete Buttigieg  
Secretary  
U.S. Department of Transportation  
1200 New Jersey Avenue SE  
Washington, DC 20590

RE: Department of Transportation, Federal Railroad Administration, Co Infrastructure and Safety Improvements (CRISI) Program. (FR-CRS-24-1 Freight Rail

Dear Secretary Buttigieg,

Members of the New Mexico Delegation write in support of the New Mexico Department of Transportation (NMDOT) and the Navajo Nation's application to the Department of Transportation Federal Railroad Administration's CRISI Program. The Freight Rail Project will significantly enhance freight transportation infrastructure improving efficiency and safety while promoting economic development.

If awarded, the Four Corners Freight Rail Project will implement the development of the Navajo Nation, as well as providing a new source of economic development in an economically depressed region. The Four Corners region transportation for large scale transport of feedstock and economic development in a coal transition region. This new rail line will also improve the state of good repair on roadway thereby providing a more environmentally friendly alternative result, the creation of this new connection to the BNSF freight line will improve the overall freight transportation system in the Four Corners region.

I appreciate your time and thoughtful consideration of this grant application and the long-term economic benefits for the Navajo Nation, San Juan County and the Four Corners region.

Sincerely,  
  
Dr. Buu Nygren, President  
THE NAVAJO NATION

Post Office Box 7440 • Window Rock, Arizona 86515 • Phone: (908) 426-2100

**The Navajo Nation** DR. BUU NYGREN PRESIDENT  
Yideeskáadi Nitsáhákees RICHELLE MONTOYA VICE PRESIDENT

March 25, 2024

The Honorable Pete Buttigieg  
U.S. Secretary of Transportation  
1200 New Jersey Avenue, SE  
Washington, DC 20590

Dear Secretary Buttigieg:

I am writing to express my strong support for a Consolidated (CRISI) grant application to the Federal Railroad Administration (FRA) project. San Juan County, NM and the FRA entered into a Development (BUILD) Agreement (Agreement #9A365214) fund pre-NEPA project development activities and an alternate line between San Juan County in the vicinity of Shiprock, NM and Gallup (BNSF) Gallup Subdivision near Gallup, New Mexico.

Prior to execution of the Grant Agreement providing funding the Navajo Nation signed a memorandum of understanding established a framework of cooperation with respect to development opportunities in the Four Corners region, located in the Four Corners region.

The proposed freight rail line will have a significant impact on the Navajo Nation, as well as providing a new source of economic development in an economically depressed region. The Four Corners region transportation for large scale transport of feedstock and economic development in a coal transition region. This new rail line will also improve the state of good repair on roadway thereby providing a more environmentally friendly alternative result, the creation of this new connection to the BNSF freight line will improve the overall freight transportation system in the Four Corners region.

I appreciate your time and thoughtful consideration of this grant application and the long-term economic benefits for the Navajo Nation, San Juan County and the Four Corners region.

Sincerely,  
  
Dr. Buu Nygren, President  
THE NAVAJO NATION

Post Office Box 7440 • Window Rock, Arizona 86515 • Phone: (908) 426-2100

**New Mexico DEPARTMENT OF TRANSPORTATION**

May 28, 2024

Amit Bose  
Administrator  
Federal Railroad Administration  
U.S. Department of Transportation  
1200 New Jersey Ave SE  
Washington, DC 20590

Dear Administrator Bose,

The New Mexico Department of Transportation is pleased to support San Juan County's application for a CRISI grant for a proposed freight railroad connection between the Four Corners region and BNSF Railway's Southern Transcon route. San Juan County will use CRISI grant funds to conduct preliminary engineering and environmental review activities for the proposed freight railroad line. NMDOT commits to ensuring the County will obtain all local match requirements for this grant.

The Four Corners region has not been connected to the national freight railroad system since a narrow-gauge railroad connection to Antonito, Colorado was abandoned more than fifty years ago. Long-distance freight shipments to or from the Four Corners region travel by truck between the Four Corners area and the nearest railroad transloading facilities. The nearest railroad facilities are along the BNSF Transcon, which is more than 100 miles south of Farmington, New Mexico, the largest city in the Four Corners region. Other truck shipments travel nearly 200 miles to rail facilities in the Albuquerque area.

A freight rail connection to the Four Corners region would reduce the cost of shipping goods to and from the Four Corners region. This would benefit existing businesses in the Four Corners region, and help to attract new businesses to the region. Business and government representatives from San Juan County have been evaluating options for constructing a freight railroad line since 2010. Constructing a freight railroad to the Four Corners region is identified as a priority in the 2014 New Mexico State Rail Plan, developed by NMDOT. In 2024, San Juan County is completing a planning study of this project that includes selecting the preferred alignment for the proposed rail line.

In addition to the economic benefit for the Four Corners region of having a connection to the national rail network, NMDOT will benefit from reducing the number of miles existing freight must travel on New Mexico highways before it is transferred to rail. This freight includes heavy truck shipments of coal from southwestern Colorado trucked to Gallup, New Mexico, and of hydraulic fracturing sand trucked from Gallup to oilfields in San Juan County. The wear and tear from heavy trucks carrying these commodities shortens the lifecycle of the New Mexico highways that carry them.

**Michelle Lujan**  
Governor

**Ricky Serna**  
Cabinet Secretary

**Commissioners**  
**Charishla Sisonen**  
Commissioner  
District 1

**Gary Tenjes**  
Commissioner  
District 2

**Hilma E. Chayonweh**  
Commissioner, Vice Chairman  
District 3

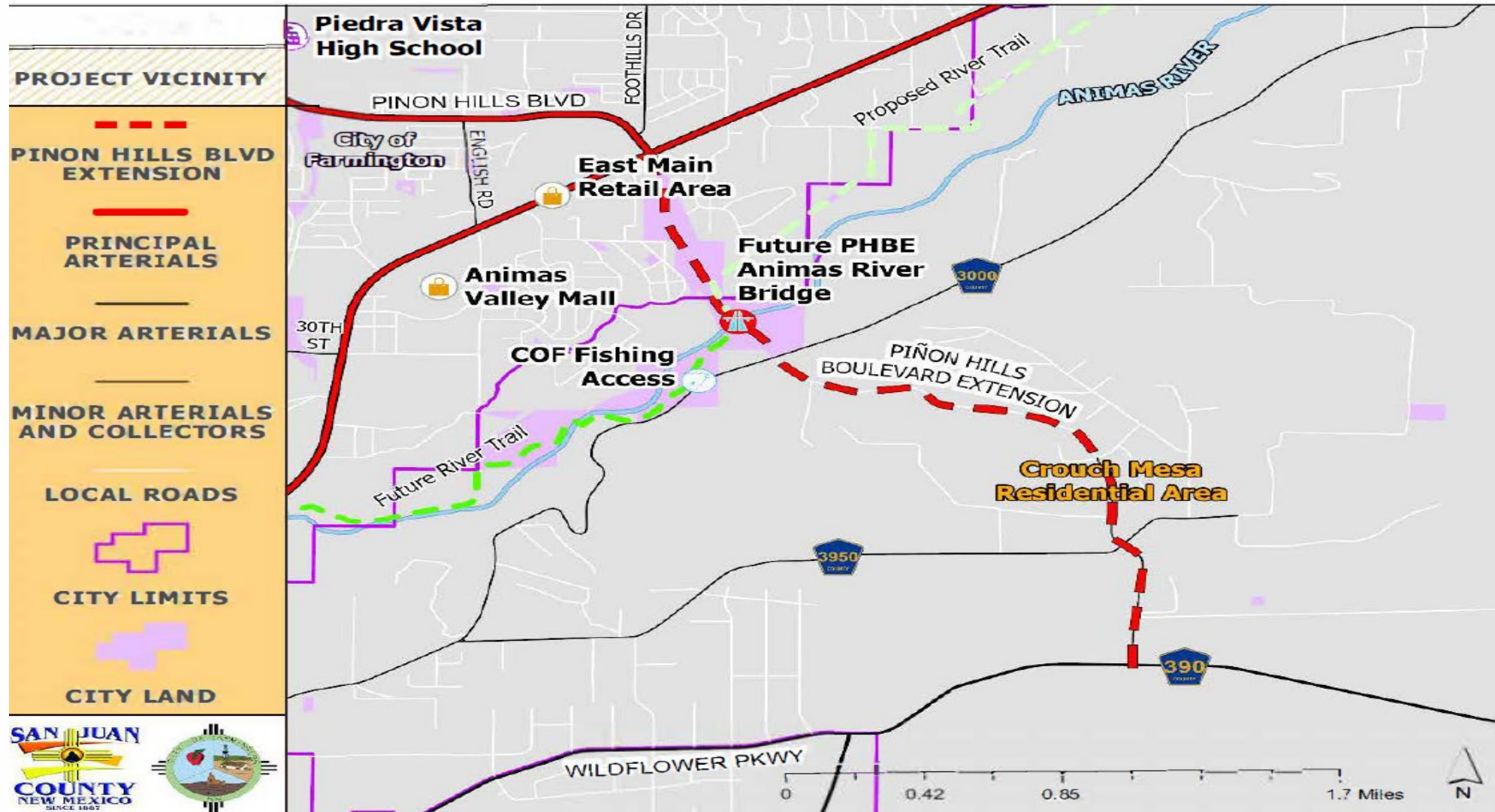
**Walter G. Adams**  
Commissioner, Chairman  
District 4

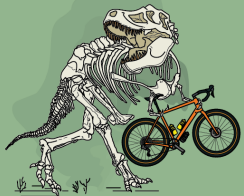
**Thomas C. Taylor**  
Commissioner  
District 5

**Charles Lundstrum**  
Commissioner, Secretary  
District 6

General Office | P.O. Box 1149 | Santa Fe, NM 87504

# Pinon Hills Bridge Project





**GRAVEL  
ADVENTURE  
FIELD GUIDE**

# Gravel Adventure Field Guide

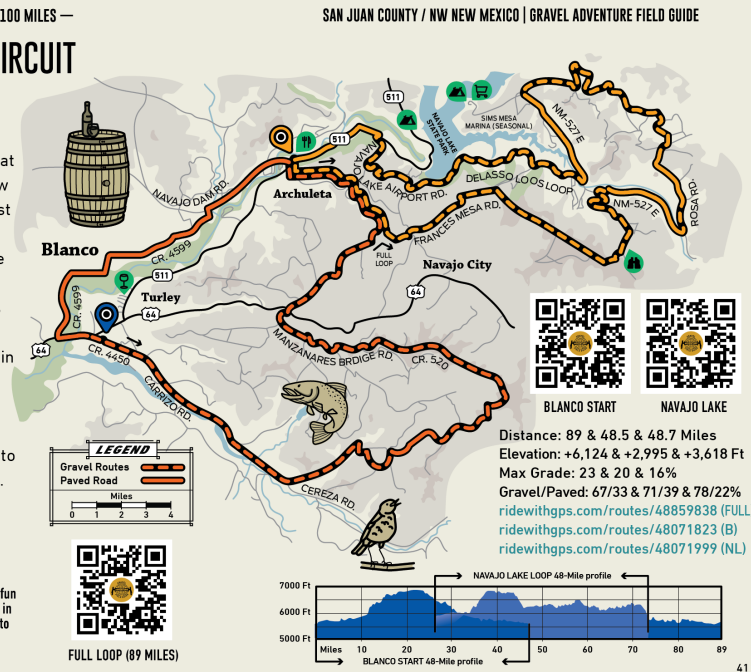
— GRAVEL ROUTES: 50 TO 100 MILES —  
**HOLY GRIT CIRCUIT**

Outside the community of Blanco, cyclists will pedal segments of the Old Spanish Trail and experience what early travelers saw in northwest New Mexico. Along the way, you'll ride past the Francis Canyon Ruin, remnants of an outlying community built by the Ancestral Puebloans.

A good portion of the route travels through Navajo Lake State Park, which holds the second largest lake in the state. The park has campground facilities and amenities that include beach access and swimming.

Ride this as the full loop or split into two segments for a shorter distance. Created by Aztec Adventures, these routes are local favorites due to the scenery and history.

**RIDE NOTE:** Several campsites in the area make this a fun overnight option. Visit Wines of the San Juan vineyard in Blanco for a great taste of the region. This route goes to some remote areas, so be prepared for a long day.

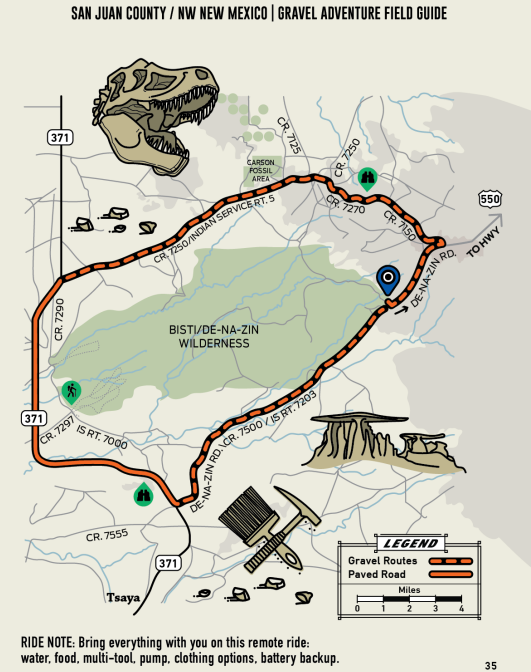
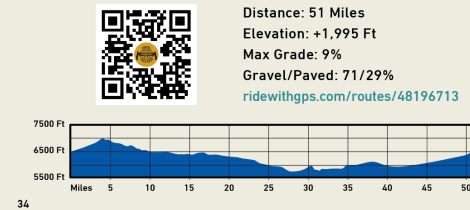


— GRAVEL ROUTES: 50 TO 100 MILES —  
**BISTI/DE-NA-ZIN TOUR**

Adventure riding in the San Juan Basin goes to another level with this route, which circumnavigates the remote Bisti/De-Na-Zin Wilderness. In Navajo, *bisti* means "a large area of shale hills," while *de-na-zin* refers to cranes—the birds.

These remote badlands are filled with otherworldly geologic features. The natural cycles of time have created a fantastical world of sandstone, shale, mudstone, coal, and silt rock formations. Weather patterns have created hoodoos—rocks that formed into pinnacles, spires, capstones, and other magical shapes. This area is also rich in fossils.

Becoming disoriented is possible. The surrounding backcountry roads can be distracting, and bicycles are prohibited within the wilderness—please stay on route. Finally, there is little shade, and temperatures can be extreme in both summer and winter.



Outdoor Recreation Master Plan Input- <https://sjc-outdoor.com/>



# Questions?



BUILDING A STRONGER COMMUNITY

