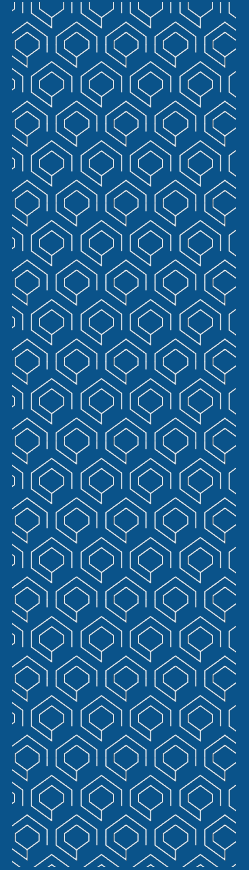
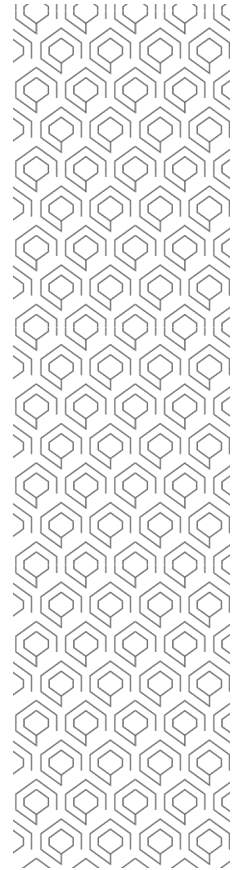
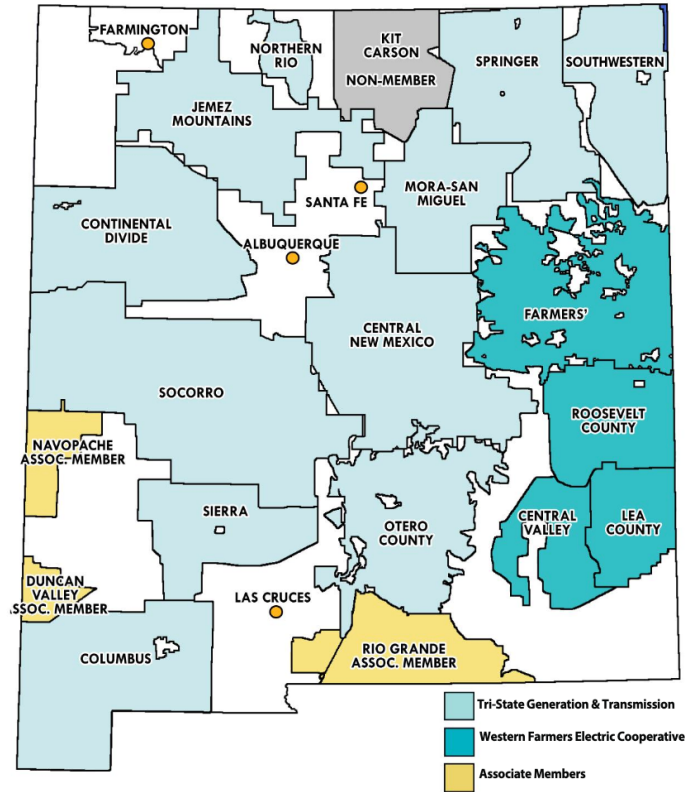


# Wildfire Response and Recovery for New Mexico's Rural Electric Cooperatives

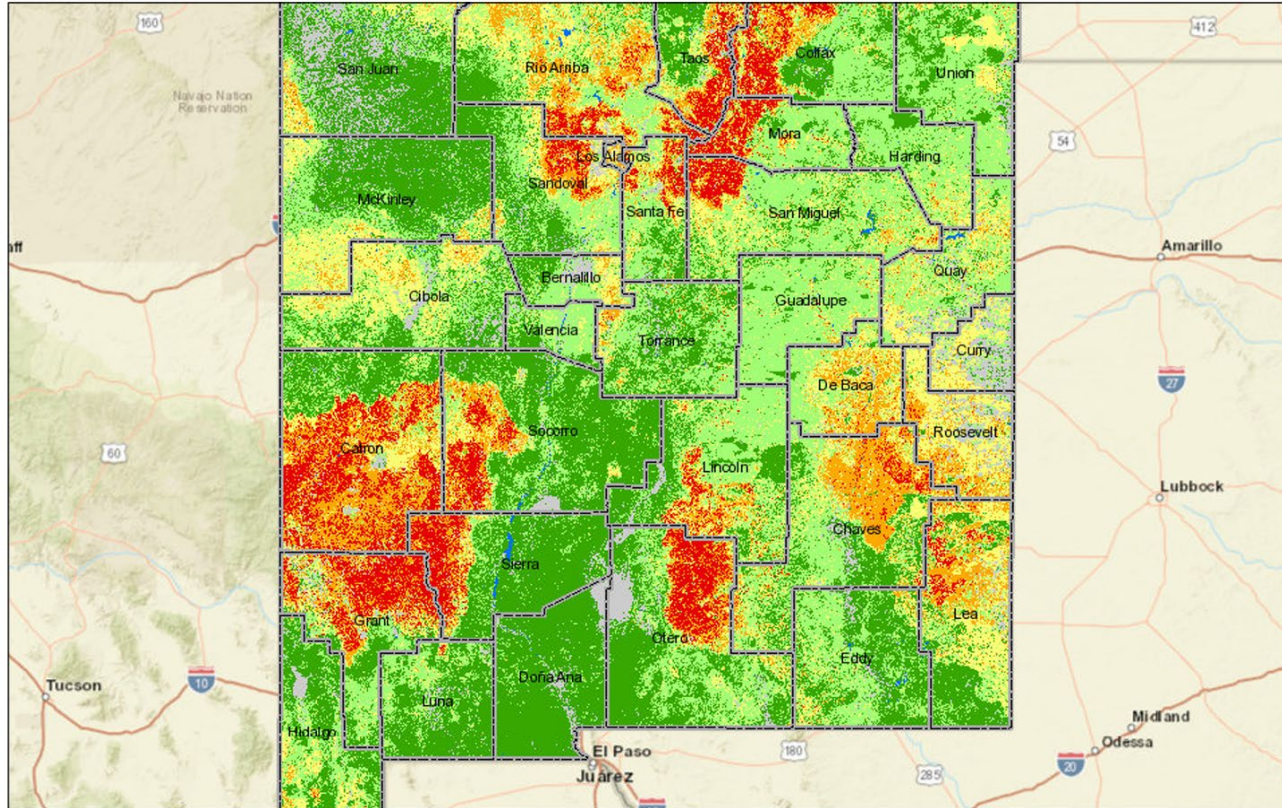
Mario Romero, CEO and General Manager,  
Otero County Electric Cooperative



# New Mexico's Rural Electric Co-ops



# Hazardous Fire Areas in New Mexico



Map taken from New Mexico's Wildfire Risk Assessment Portal

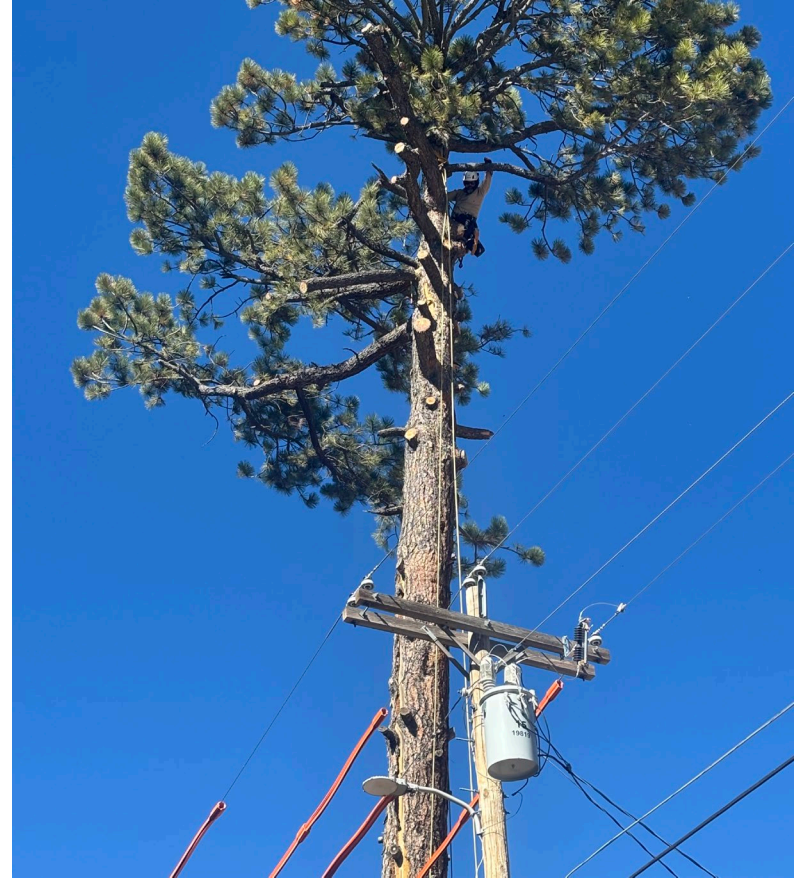
# Wildfire Mitigation Plans and Work at Otero County Electric Co-op

Bringing vegetation management system in-house

Installation of wildfire-resistant mesh

Drone asset inspections

Pilot project on vegetation-related fault detection



# Daily Situational Awareness

National Weather Service data and field observations  
to assist in determining daily activities

Safety Settings Established for Operations During Red  
Flag and Fire Weather Days

Fire Safe Work Practices



# Emergency Response

Relationships with approved vendors and neighboring utilities to purchase or borrow material if more is needed.

Coordination with local authorities and emergency response units to quickly address power outages and natural disasters.



# Wildfire Liability

Utilities are doing extensive wildfire mitigation work, but the risks of catastrophic wildfire continue to rise.

Rural electric co-ops face billions in potential wildfire liability, despite their ongoing wildfire mitigation work.

Rural electric co-ops need comprehensive legislation that will reduce wildfire risk while stabilizing the liability landscape for rural electric co-ops.

