



June 17, 2026

LEGISLATIVE HEALTH AND HUMAN SERVICES COMMITTEE

---

**Mike Richards, MD, MPA**

Executive Vice President of UNM Health Sciences &

Chief Executive Officer of the UNM Health System



# 2026 UNM HSC Legislative Budget

## Healthcare Workforce Expansion, Graduate Medical Education, Access

Project Title	FY27 Request
UNM School of Medicine Student Support	\$6,200,000
UNM School of Medicine Faculty Support	\$21,500,000
Resident & Fellow Compensation	\$2,000,000
Rural Residencies & Rural Rotations	\$24,000,000
UNM School of Medicine New Facility	\$546,000,000
Behavioral Health Technical Assistance Center	\$6,800,000

## Research and Innovation

Project Title	FY27 Request
Biomedical & Health Policy Research	\$13,000,000
Northern NM Clinic	\$15,000,000



# SCHOOL OF MEDICINE

## New SOM Facility



### OVERVIEW

- **350,000 SF facility** - research growth, and future flexibility
- Supports **200 med students per class**
- Enables **70+ research faculty** in modern lab space
- Includes **2 active-learning classes** and **team-based simulation space**
- Features **collaboration areas** and **study space for 400+ learners**
- **10-15% shell space** for future growth

# How is the full project being funded?

Through coordinated **state investment** and **university matching funds**, this project supports expanding medical education and preparing the next generation of healthcare workers for New Mexico

## State Legislative Funding

\$ 280M	2026 SB240 (SSTB)
\$ 150M	2026 HB2 / HB8 (HED Fund)
\$ 116M	2026 HB248 (GO BOND)
\$ 30M	2025 HB450 (GF)

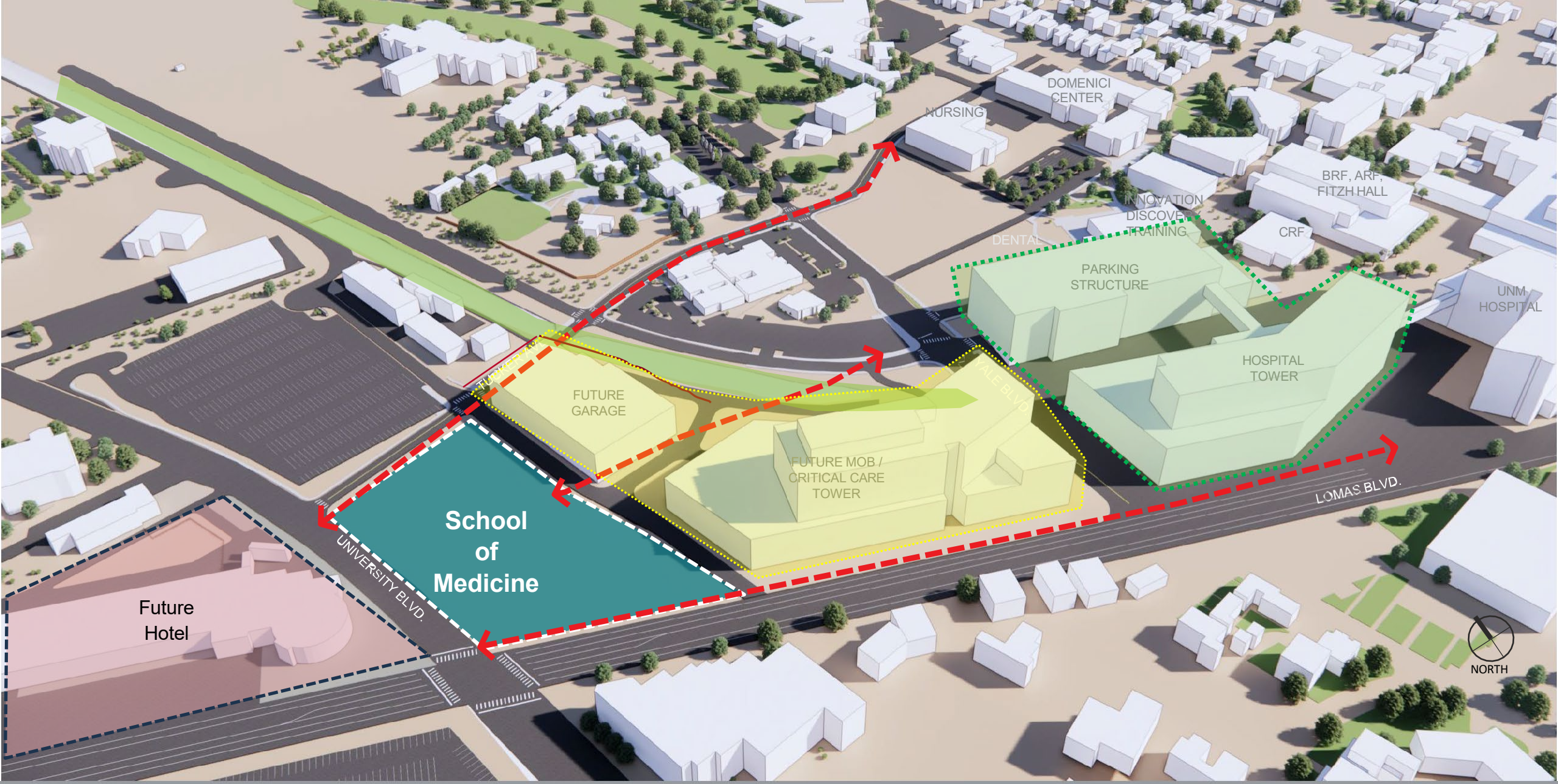
## UNM Institutional Investment

\$ 60M	Institutional Funds
--------	---------------------

---

# \$636M Total Project Funding



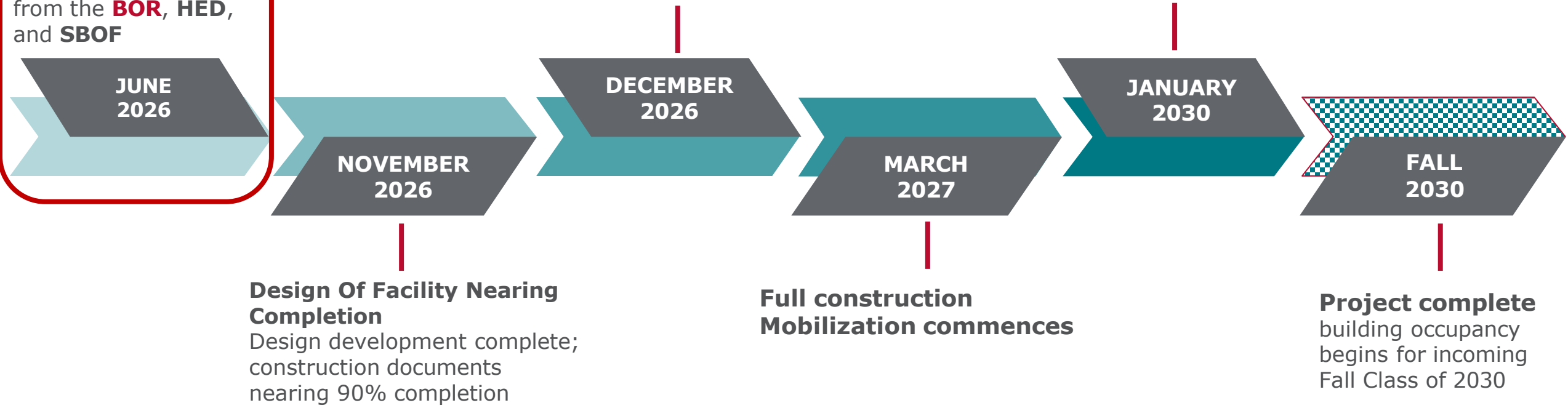


# Upcoming Milestones

**Mobilization for early site work & procurement of long-lead items**  
(pending approvals from the **BOR**, **HED**, and **SBOF**)

- Full project approval requested at**
- December **BOR/HSCCC**
  - January HED Capital Outlay Committee
  - February State Board of Finance

## Construction Completion



Guiding The Project From **Design** Into **Construction**

# Site Mobilization



**1717 Lomas BLVD NE  
Albuquerque, New Mexico**

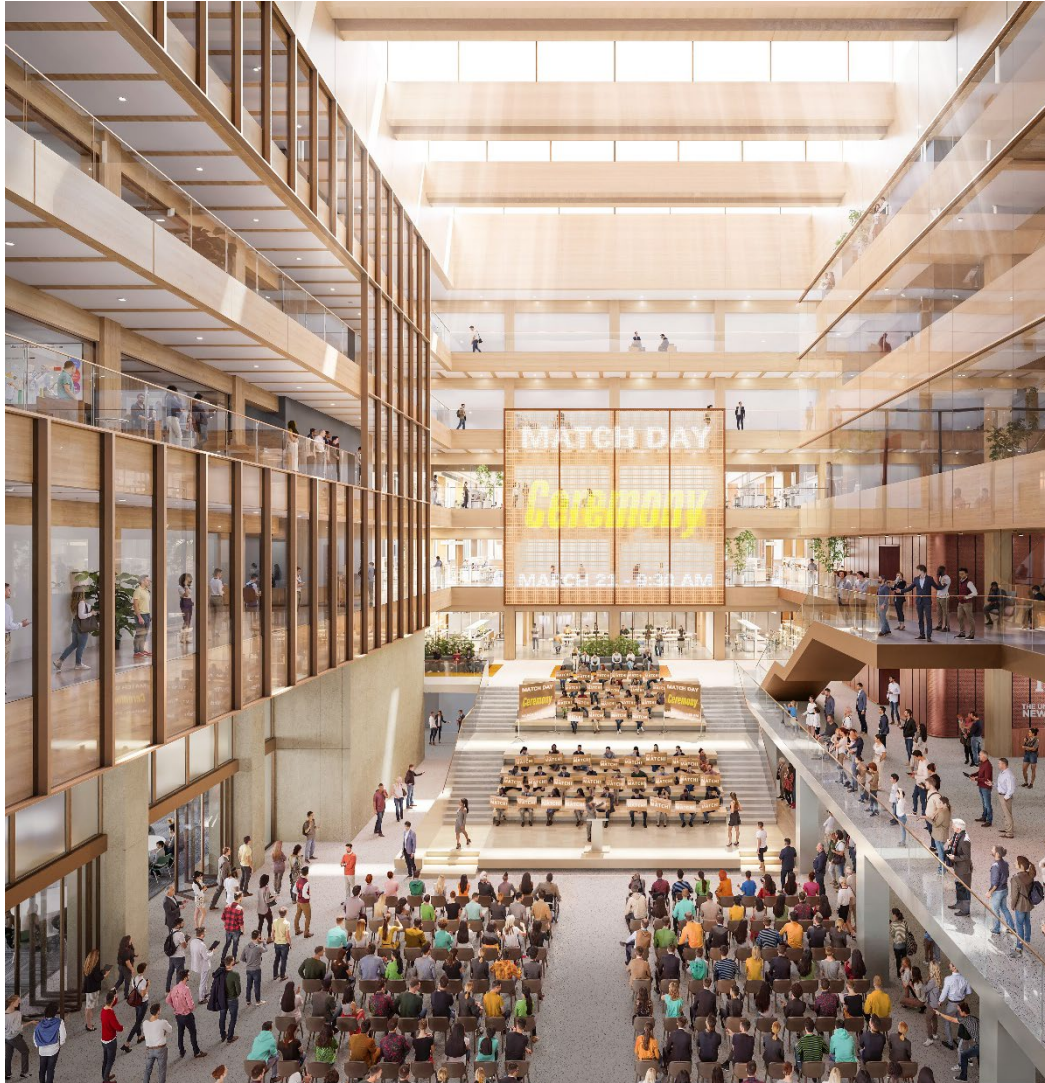
# Early Rendering Exterior Campus (Looking West)



# Early Rendering Interior Atrium (Looking East)

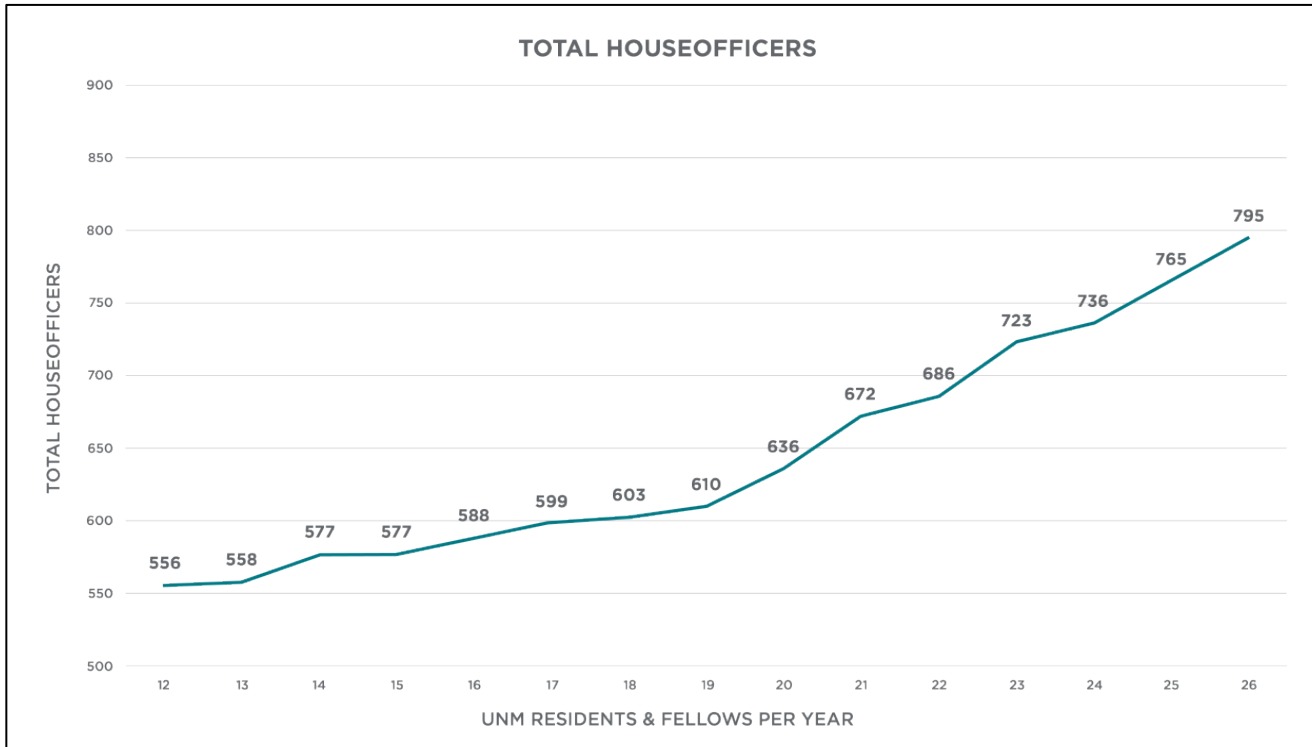


# Early Rendering Interior Atrium



# Graduate Medical Education

UNM GME is continually growing resident and fellow classes



- **24% increase in GME Positions**
- **17 New Programs**
- **12,000 Applications for 174 first Year Positions**

## STUDENT & RESIDENT RETENTION

### Medical Students

New Mexico – 38.5%  
National Median – 39.0%

### GME

New Mexico – 40.3%  
National Median – 45.6%

### Medical School and GME

New Mexico – 68.2%  
National Median – 68.9%

# Rural Residencies

**FY27 APPROPRIATION: \$24,000,000**

*“For rural residencies and residency rotations to administer a program that provides payments to federally qualified health centers, rural health clinics, psychiatric facilities and hospitals to offset direct and indirect costs for medical residents associated with graduate medical education not otherwise reimbursed.”*

## UNM HSC GOALS

- Place residents **in at least 100 new rural rotations** between July 1 and December 31, 2026
- Support development of **rural residency tracks** in high-need locations and specialties
- **Develop a sustainable, centralized infrastructure** to support current rural resident rotations and future training programs
- Provide support to **other NM-sponsored residencies** (i.e. Nor Lea, SJRMC, Memorial Hospital, etc.)



# Rural Residencies

## KEY OBJECTIVES

### Hospital & Clinic Support



- Support administrative costs associated with coordinating rotations
- Cover hospital and clinic costs incurred in supporting resident rotations

### Preceptor Initiatives



- Provide incentives for preceptors and attending physicians who participate in resident training
- Offer preceptor development and mentorship opportunities

### Resident Incentives



- Offer stipends and other incentives to encourage residents to select rural rotations

# UNM HSC Colleges

## Nursing



### ENROLLMENT FALL '24-'25

- 32.6% growth
- 1,274 students

## Pharmacy



### ENROLLMENT FALL '24-'25

- 3.3% growth
- 212 students

## Population Health



### ENROLLMENT FALL '24-'25

- 20.3% growth (majors only)
- 127 students

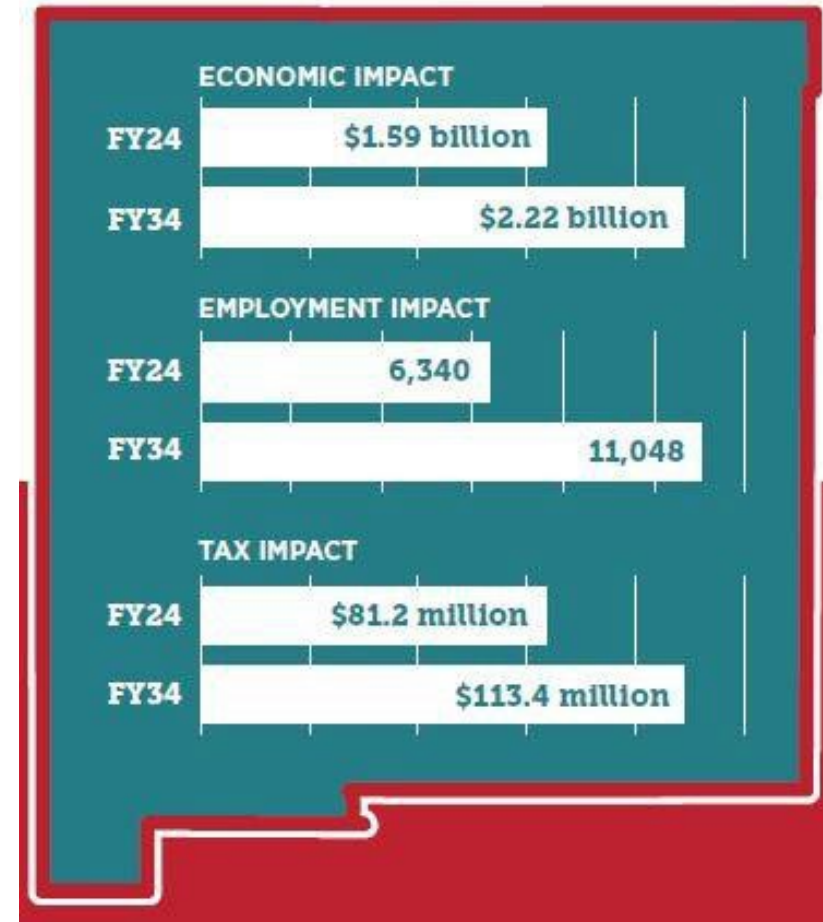


Enrollment Increase	15.6%
Graduation Increase	16.3%

# Economic Impact

## Of UNM SOM Expansion

- \$290M - direct economic impact
- \$341M - indirect and induced economic impact
- 565 – direct new jobs
- 4,143 – indirect and induced jobs
- \$32.2M in new state and local tax revenue
  - \$2.54 in state and local tax revenue for every \$1 of additional state funding
  - \$49.78 in statewide economic impact for every \$1 received of state funding



Academic Update

# MASTER OF SOCIAL WORK PROGRAM

## Received Approval to Move Forward



- Housed in the **School of Medicine Department of Psychiatry & Behavioral Sciences**
- Recruiting students begins this summer; starting Spring 2027
- Prepares students for careers in clinical and medical social work in:
  - Hospitals
  - Behavioral health clinics
  - Schools
  - Community organizations across New Mexico

# Other UNM Workforce Initiatives

## **BELONG (Building Environments for Learning, Opportunity, Navigation and Growth) Taskforce**

- Conducts short-, mid-, and long-term planning to enhance enrollment capacity and maintain quality within health professions programs.

## **UNM HSC Workforce Expansion Steering Committee**

- Focuses on system-level improvements to clinical placement coordination, faculty and preceptor capacity, and centralized training capacity data.

## **Behavioral Health Technical Assistance Center (BHTAC)**

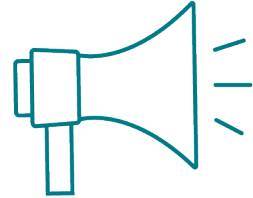
- Facilitates alignment and implementation of local and statewide behavioral health priorities among regional entities.



## Research Update

# HANTAVIRUS EXPERTISE

Drs. Michelle Harkins, Steven Bradfute & Greg Mertz



**\$38,941,968**

TOTAL PUBLICITY VALUE



**959**

TOTAL MEDIA MENTIONS



The Washington Post

MarketWatch

Bloomberg

Healio

The New York Times

NBC News

Healthline

The Wallstreet Journal

The Associated Press

TV Asahi (Japan)

Newsweek

NBC Nightly News

National Geographic

ABC Australia

KRQE

The Dispatch

CBS News

The Boston Globe

WIRED

FOX Chicago

KXAN Live radio (Austin, TX)

KOAT

C&EN

KOB

AFP News

CNN

Taos News

BBC Radio World News Service

CNN with Tapper

NBC News NOW

Scientific American

NBC Universal (Digital)

Native America Calling Live Radio Show

AccuWeather

The Albuquerque Journal

Robert Cykiert's Doctor Podcast

TIME Magazine

Eastern New Mexico University News

New Mexico PBS



Leadership Updates

# UNM HSC Leadership



Kate Becker

Chief Executive Officer

UNM Hospital



Steve McLaughlin

Interim VP of Clinical Affairs

UNM Health System



Joanna Fair

VP of Academic Affairs

UNM Health Sciences Center



# UNM HOSPITAL

## Children's Psychiatric Center Ribbon Cutting





THANK YOU



THE UNIVERSITY OF NEW MEXICO  
HEALTH SCIENCES CENTER