



Pattern Energy Introduction

Economic & Rural
Development
Committee

Wednesday, September 5, 2018



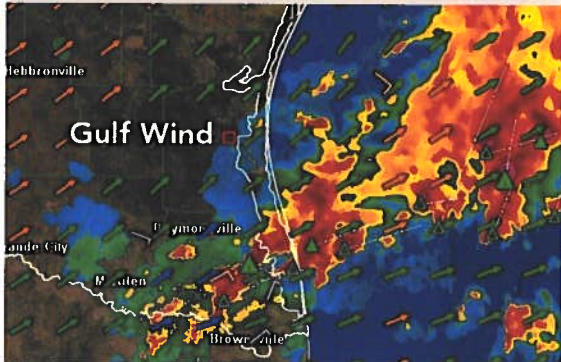
Company Overview

Core Competencies



Origination & Development

- Greenfield / Acquisition
- Meteorology and analytics
- Community support
- Utility and supplier relationships
- Transmission / Interconnection planning



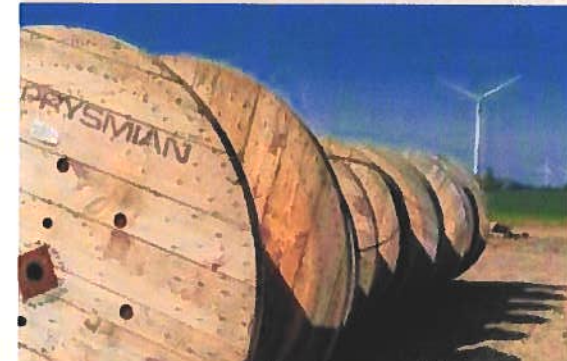
Finance & Permitting

- Contract negotiation
- Project finance
- Permits / Real estate finalization
- Insurance
- Third party verification
- Hedging
- Community Relations



Construction

- Engineering
- Construction management
- Project administration
- Site Biological and Archeological monitoring and mitigation
- Environmental, Health and Safety management



Corporate Administration & Support

Community & Environmental Commitments



- We support the communities in our project areas
 - Ensure our projects succeed by ensuring the project area communities succeed
 - Strive to build strong relationships with landowners, local officials, and community members
 - Earn trust through communication and collaboration and work to structure our projects so benefits spread to the local communities
- We respect the land and the environment
 - Consider it our responsibility to produce and transport clean, renewable energy to consumers with the least amount of natural impact
 - Aim to exceed industry standards and be a leader in the advancement of best practices for the identification, assessment, and mitigation of our environmental impacts





Broadview & Grady Wind

Curry County, New Mexico
Deaf Smith County, Texas

Overview - Broadview & Grady Wind



- Donated \$320,000 to the local community, including a \$150,000 donation to the Village of Grady, a separate \$150,000 donation to the Village of Grady municipal school district, and more than \$50,000 in donations to local volunteer fire organizations.
- Overall economic impact to NM expected to be \$979.8M
- Expected to contribute more than \$30 million to the local government and school system over 25 years



Overview - Broadview & Grady Wind



- During construction, provided jobs for more than 650 workers during peak activity, with an average of 350 workers on-site throughout the construction process
- Now operational, the facility employs 18 full-time workers with nearly half of those positions being filled by local residents

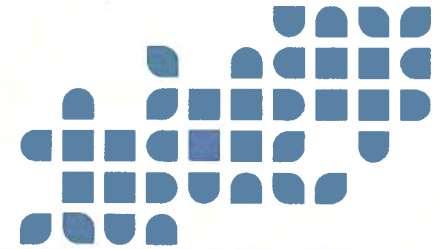


Corona & Mesa Canyons Wind

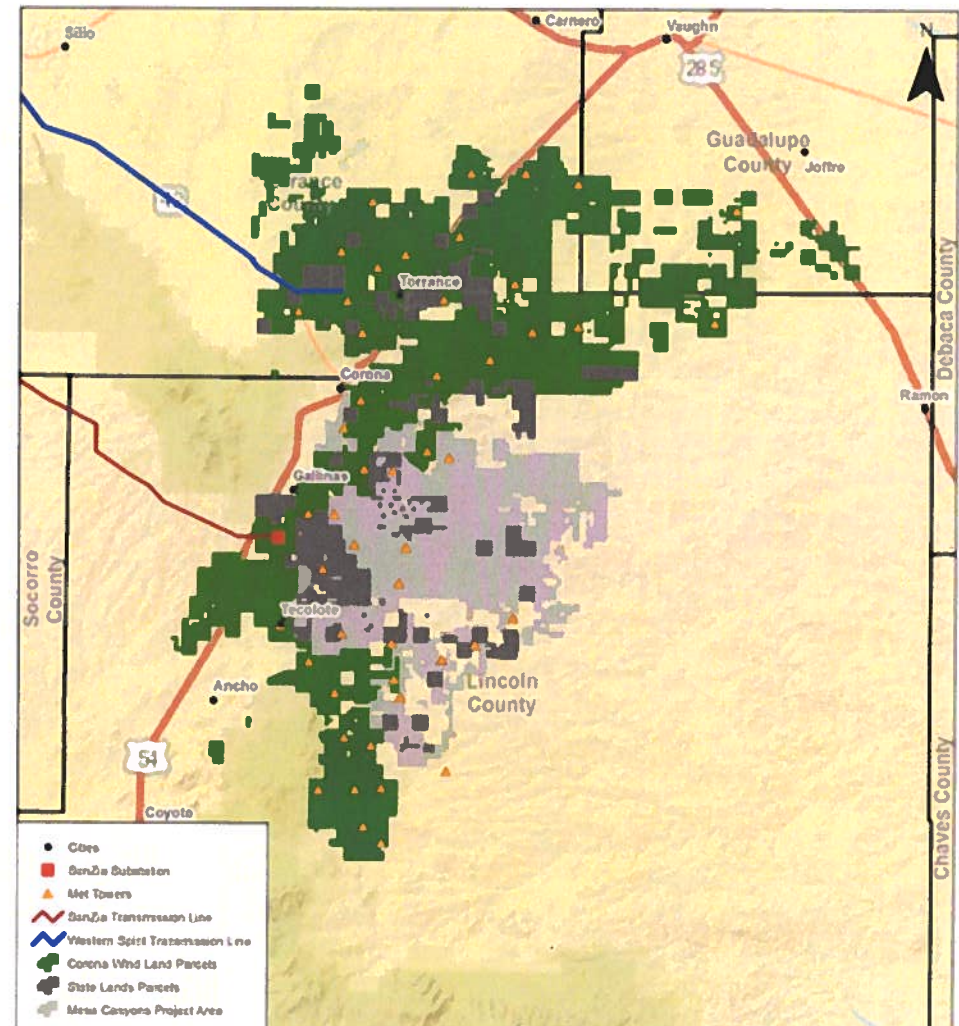
Lincoln, Torrance, and Guadalupe Counties, New Mexico



Corona Wind Projects



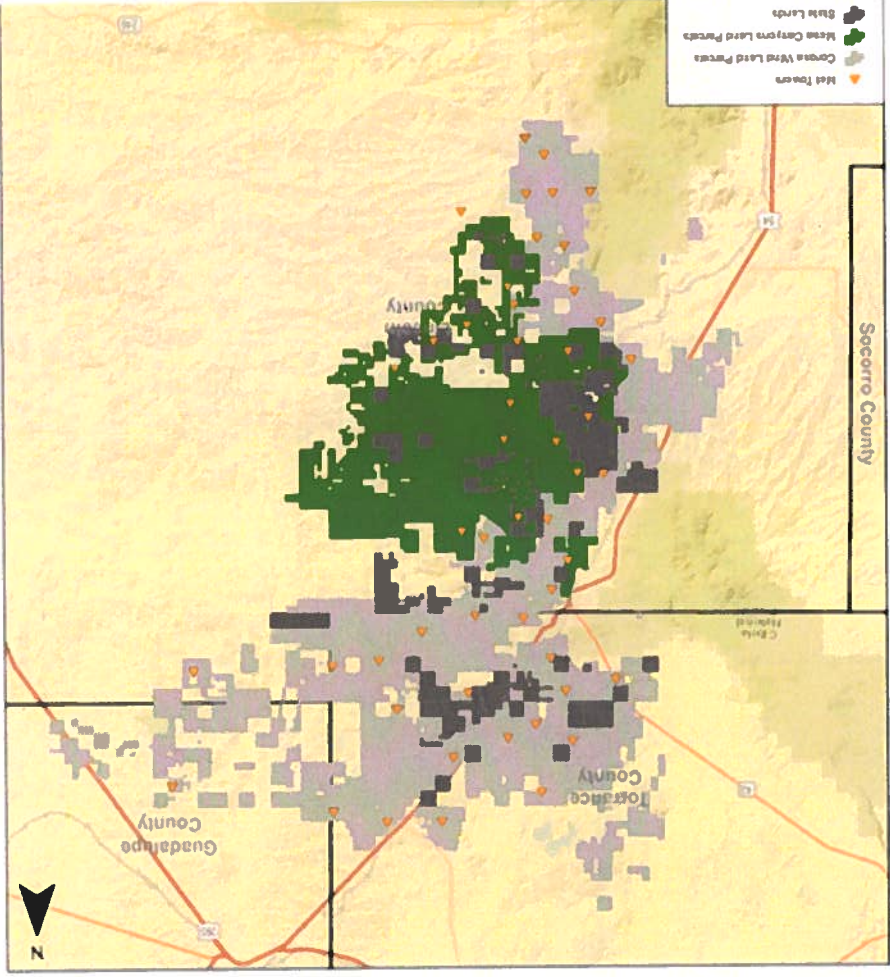
- Approximately 2,200 MW Wind Development
- 290,000 Acres Privately Owned Land
- 34,000 Acres of State Land (Applications in Progress)
- Lincoln County WECS Permit Application in Progress
- Torrance County SUD Application in Progress
- PRC Location Control & ROW Permit in Progress
- Consultation with DoD ongoing
- Start of construction work completed for PTC Qualification
- Start of construction scheduled for mid-2019
- COD by end of 2020



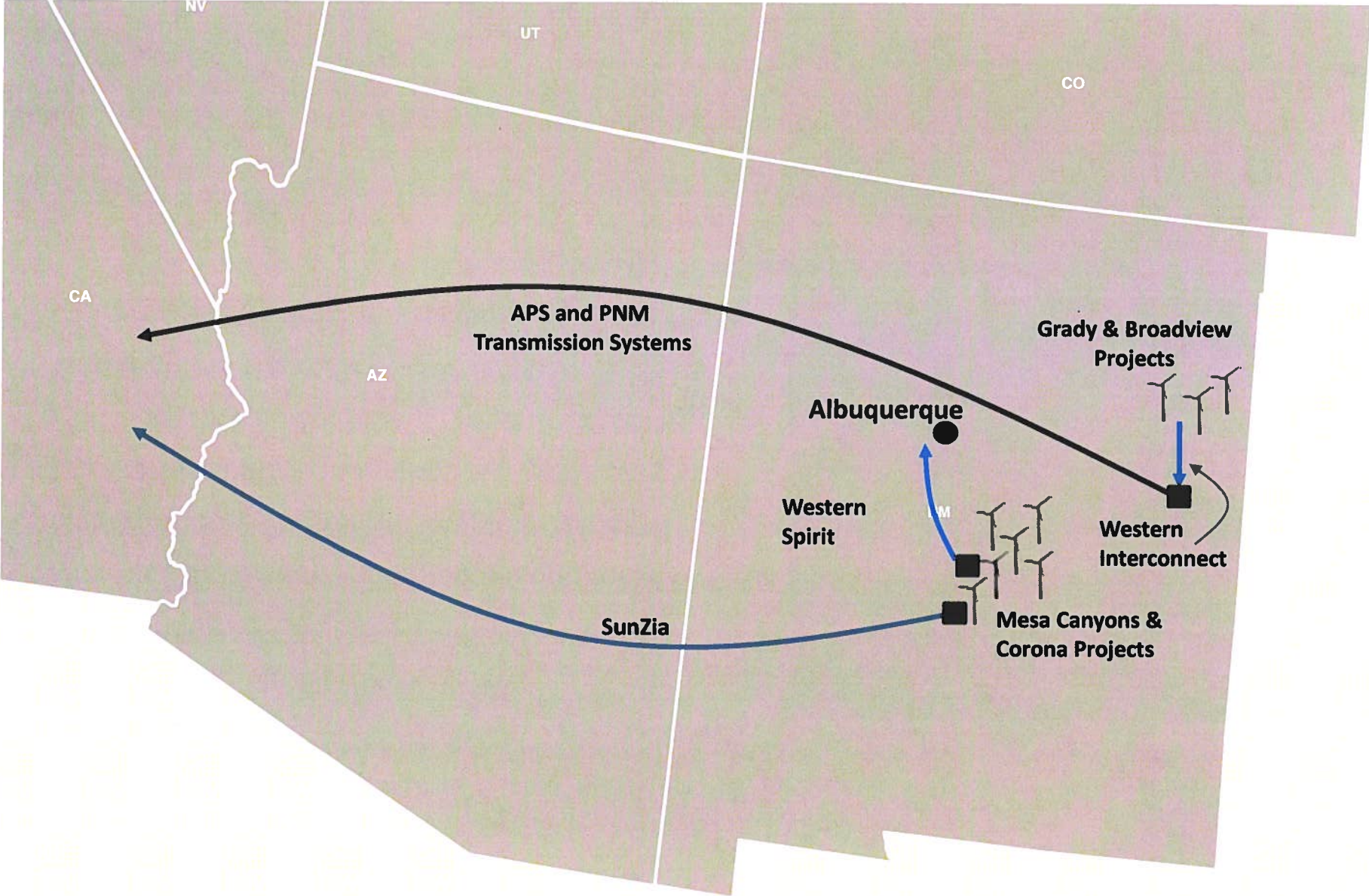
Mesa Canyons



- Approximately 1,000 MW Wind Development
- 129,000 Acres Privately Owned Land
- 12,000 Acres of State Land (Application in Progress)
- August 24, 2017 - Lincoln County WECS Permit
- February 28, 2018 - PRC Location Control Permit
- January 26, 2018 - FAA Determinations of No Hazard
- Start of construction scheduled for mid-2019
- COD by end of 2020



Transmission Paths for Pattern Projects



Corona Area Wind Projects – Target Schedule

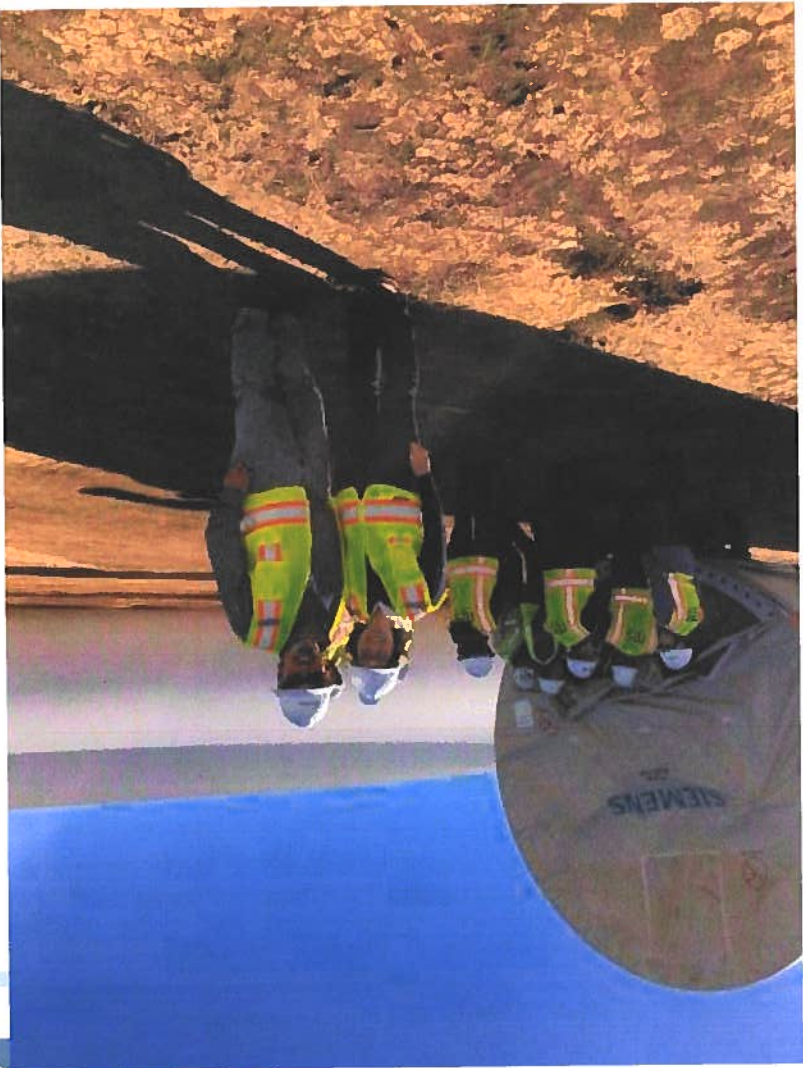


- PTC Work - Complete Q4 2016
- Development - Ongoing, Complete H2 2019
- Private Real Estate – Ongoing, Complete Q4 2018
- State Lands – Ongoing, Complete H1 2019
- Local Permitting – Complete Q1 2019
- PRC Locational Permit – Complete Q3 2018
- Construction Financing – H2 2019
- Commercial Operation – by December 31, 2020

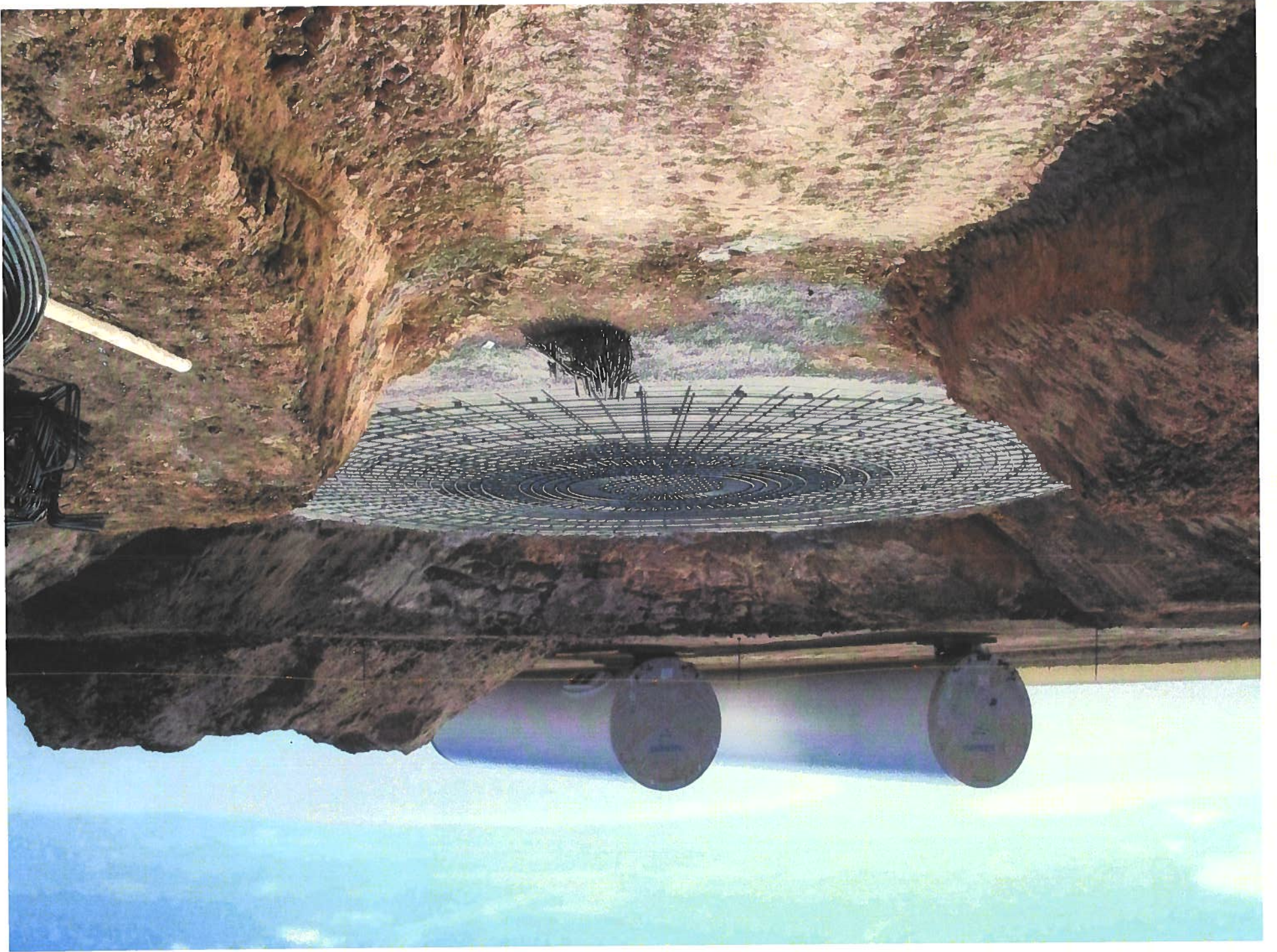


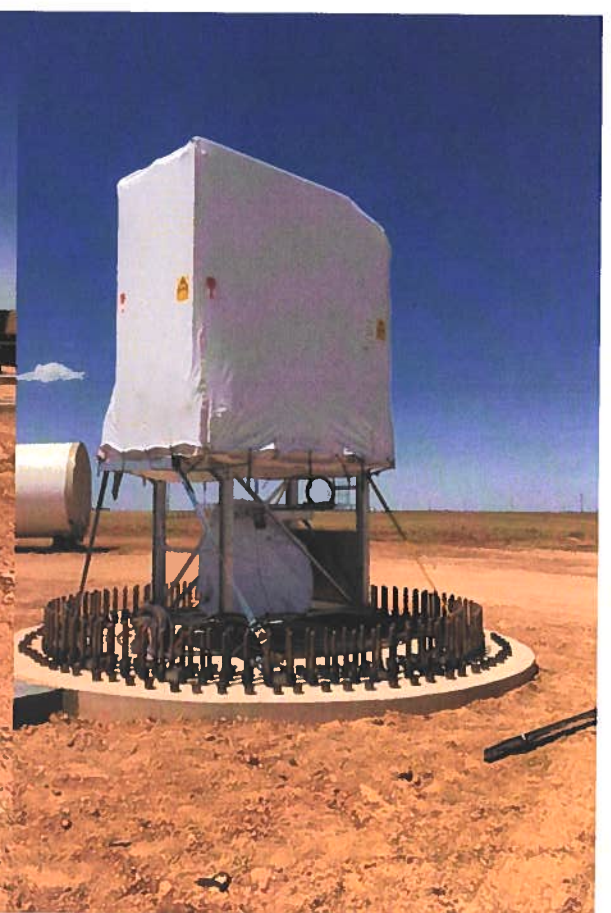
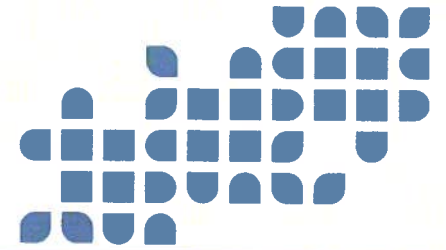


Photos

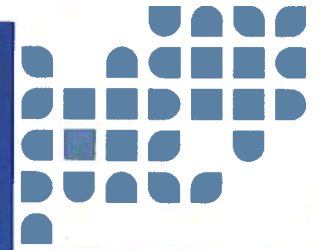


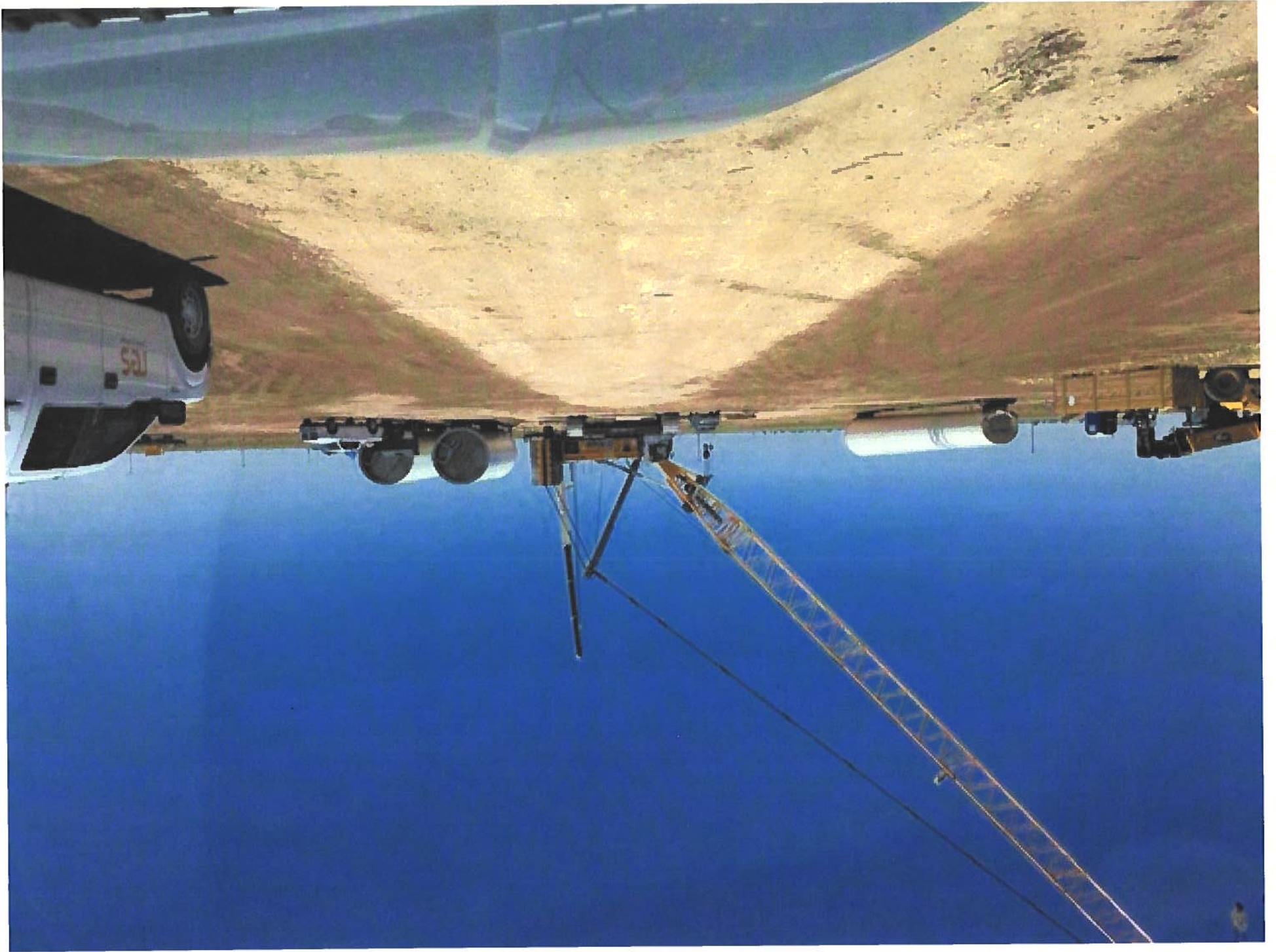




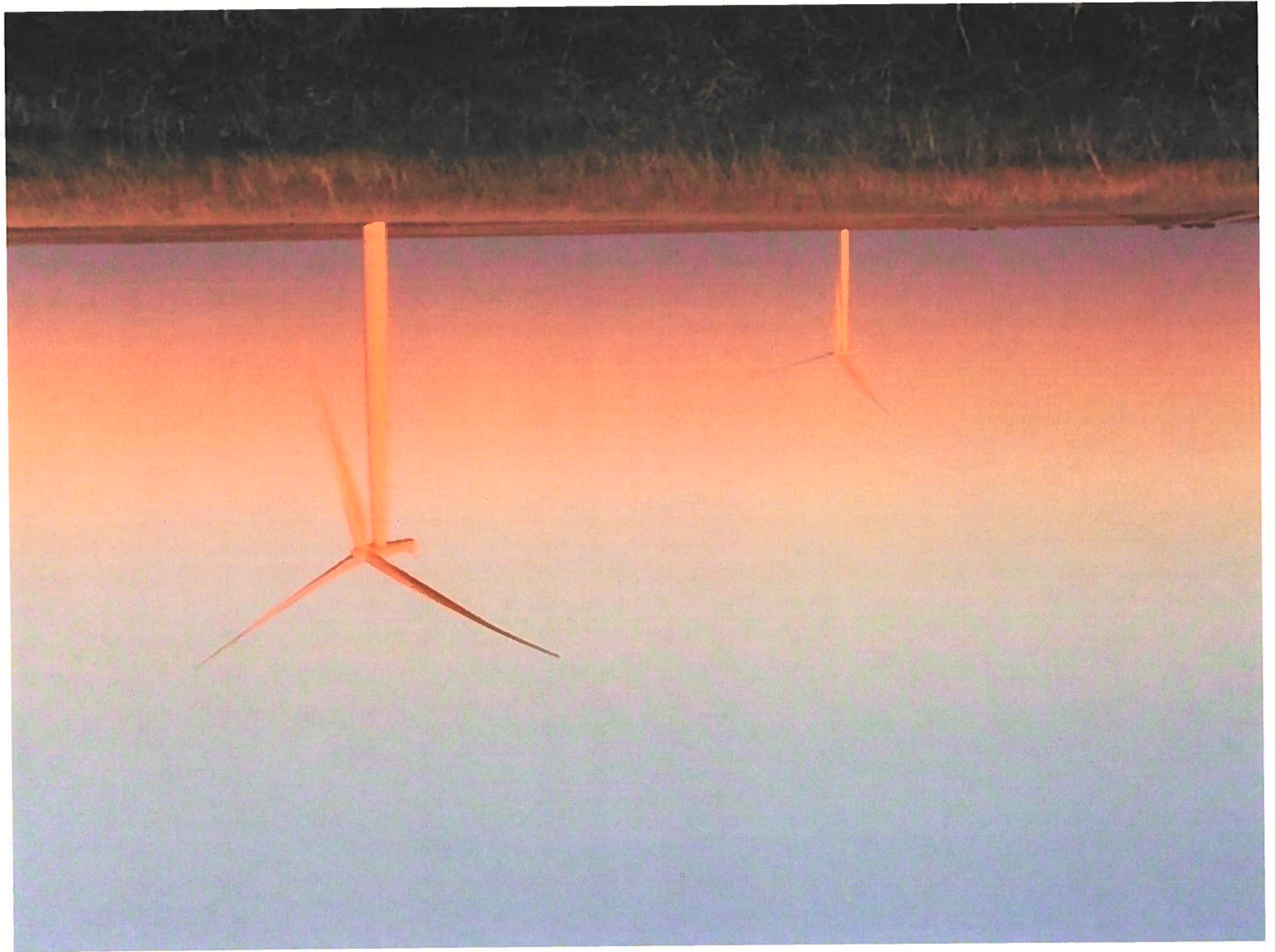


















Crystal Coffman
Manager, Project Development
Pattern Development

Phone: (713) 308-4203

Email: crystal.coffman@patternenergy.com

Adam Renz
External Affairs & Government Relations
Pattern Development

Phone (713) 308-4284

Email: adam.renz@patternenergy.com

