



New Mexico State Parks

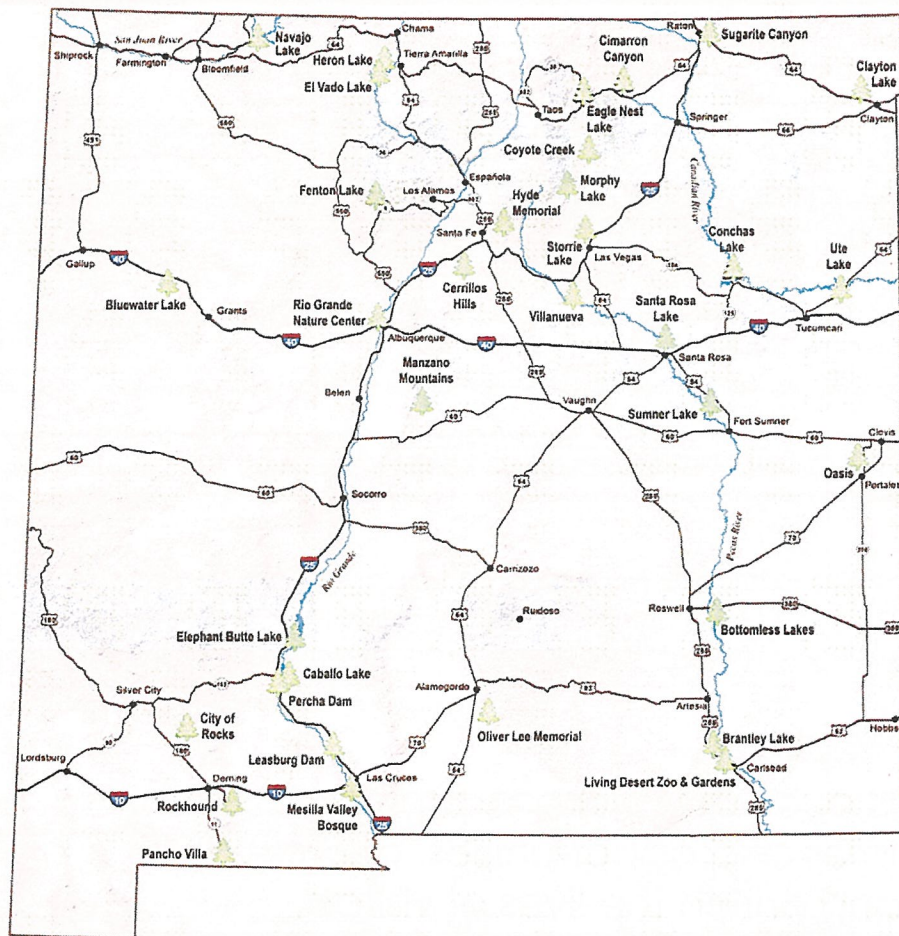
A Division Of The Energy, Minerals & Natural Resources Department

OUR MISSION:

Protect and enhance natural and cultural resources, provide first-class recreational and education facilities and opportunities, and promote public safety to benefit and enrich the lives of visitors.

WHO WE ARE...

Tied to Communities in 26 Counties



34 parks statewide, including 19 lakes and 191,586 acres of land and water



Approximately \$100 million in fixed assets



5 million visitors annually



70% of New Mexican's live within 40 miles of a state park



State Parks' visitation positively impacts rural economies throughout New Mexico.



WHAT WE DO...

State Parks is made up of 34 separate entities, each similar to a small municipality consisting of:

Public Safety

Buildings & Facilities

Public Education

Resource Protection

Utilities & Infrastructure

**Public/Private
Business Partnerships**

Grounds & Roadways

Vehicles & Equipment

Economic Development



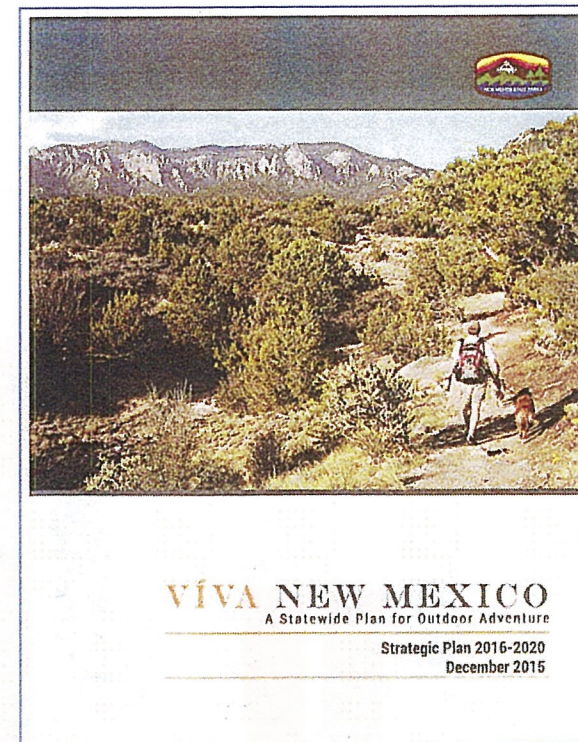
Outdoor Recreation = Big Business in NM



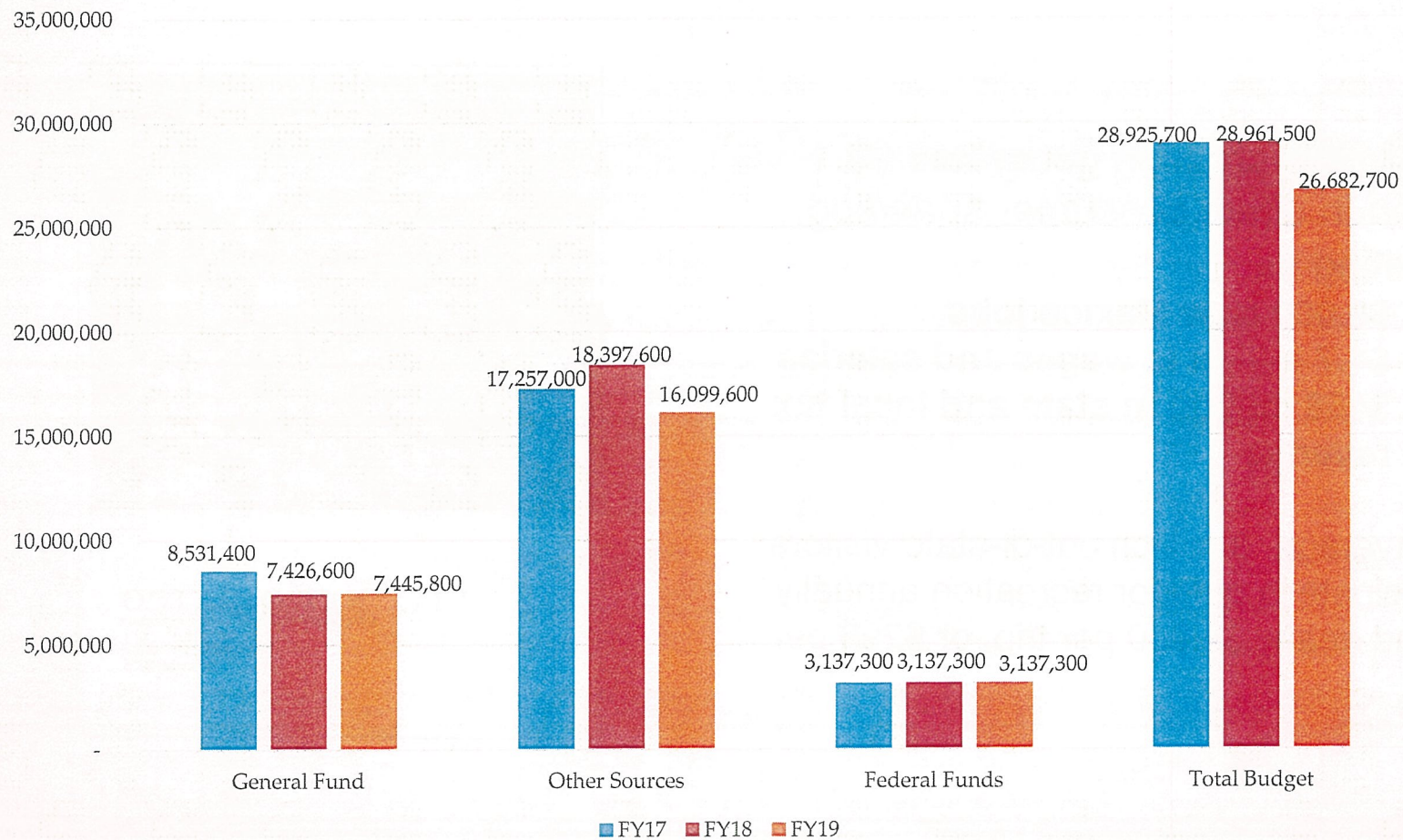
Navajo Dam Enterprises:
Marina Concession

The Value of Outdoor Recreation

- Outdoor recreation generates \$6.1 billion in direct consumer spending, resulting in:
 - **68,000 New Mexico jobs**
 - **\$1.7 billion in wages and salaries**
 - **\$458 million in state and local tax revenue**
- On average, 3 million out-of-state visitors participate in outdoor recreation annually spend nearly \$1,000 per trip, or \$290 per day



State Parks Budget: General Fund vs. Other Sources



State Park Fees

- **Day Use:** \$5 per vehicle

- **Camping:**
 - Primitive - \$8
 - Developed - \$10
 - Developed w/utility - \$14
 - Full utility - \$18

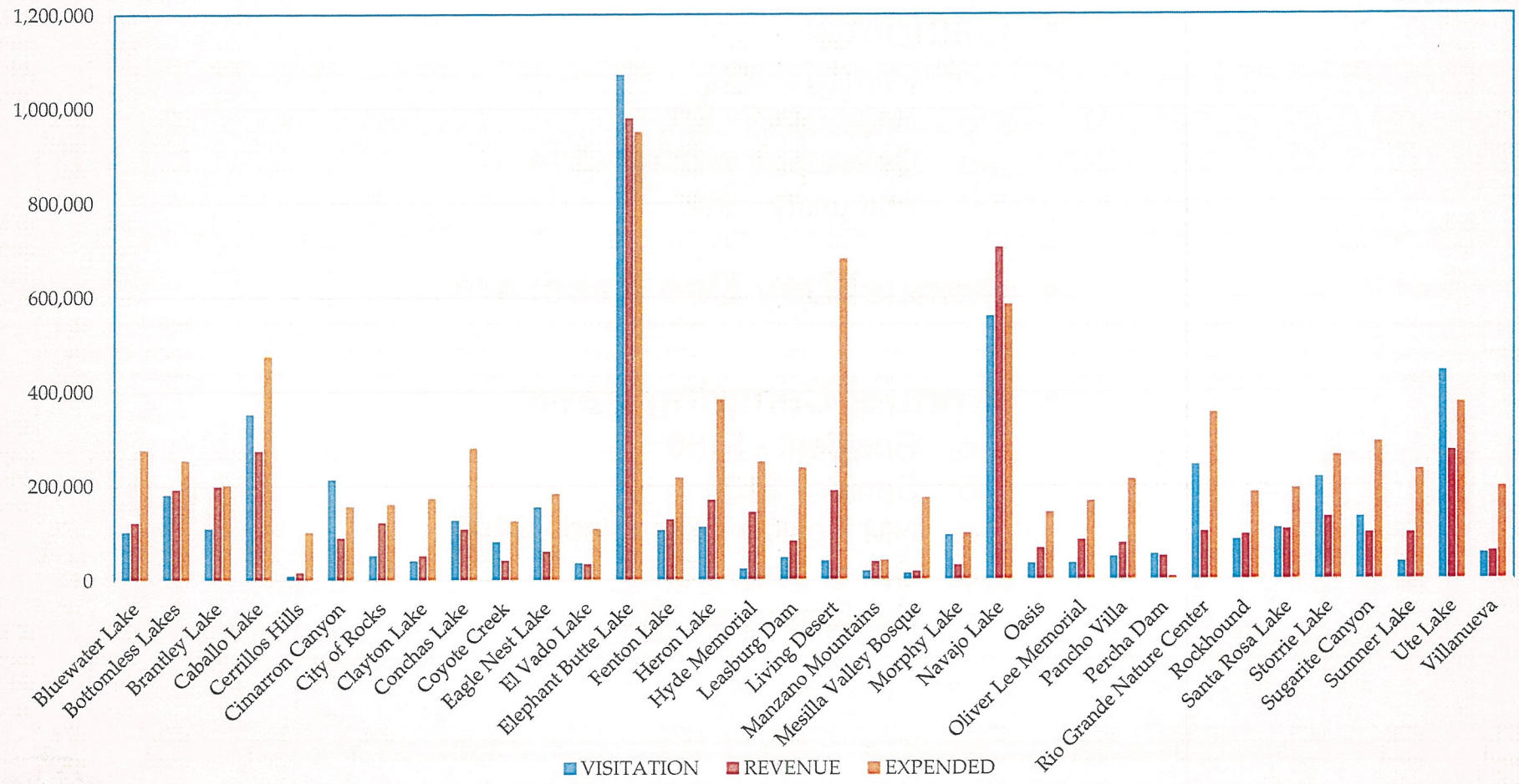
- **Annual Day Use Pass:** \$40

- **Annual Camping Pass:**
 - Resident - \$180
 - Senior - \$100
 - NM Resident Disabled - \$100
 - Out of State - \$225
 - Replacement - \$10

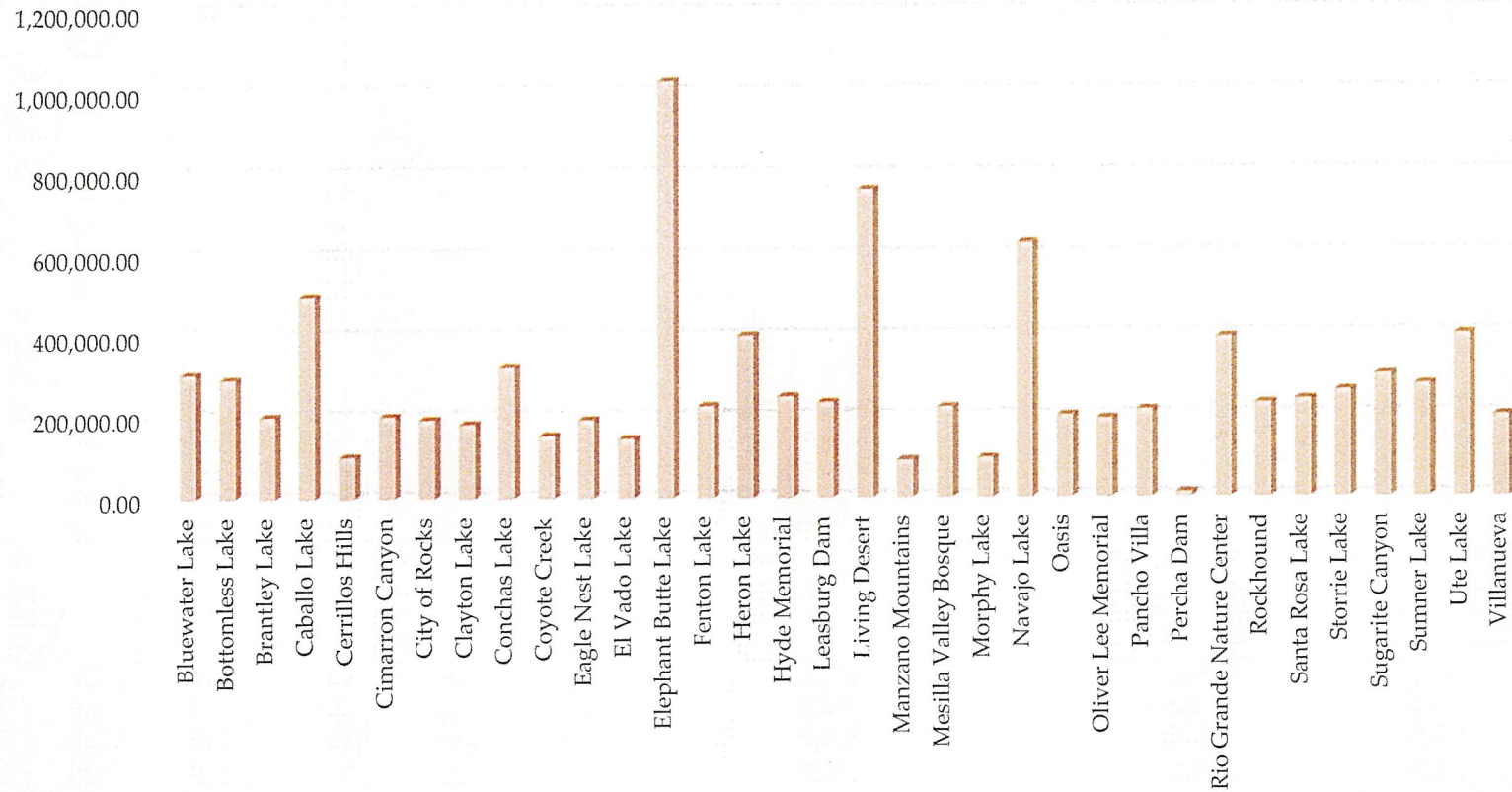


Visitation, Revenue & Expenditures

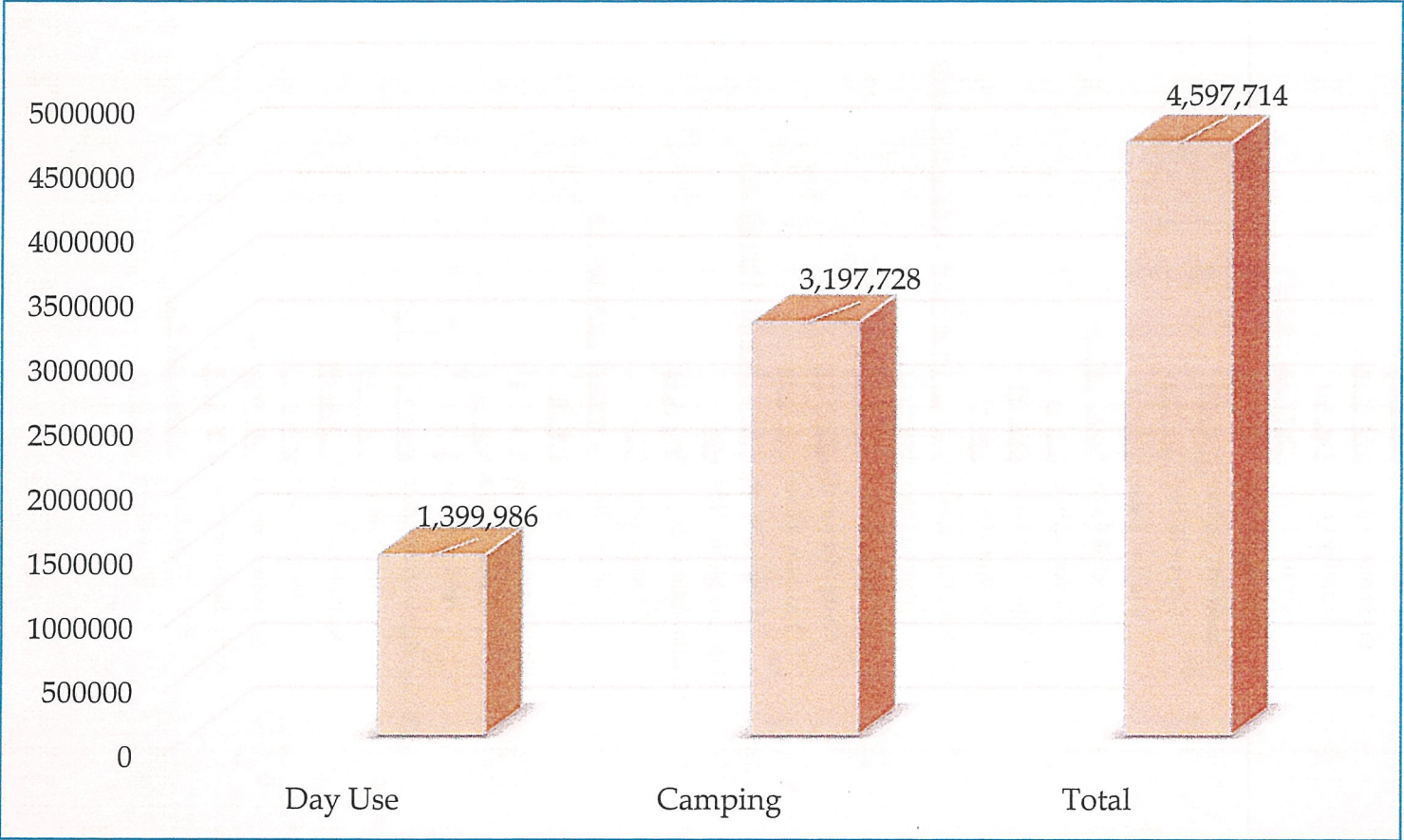
FY18



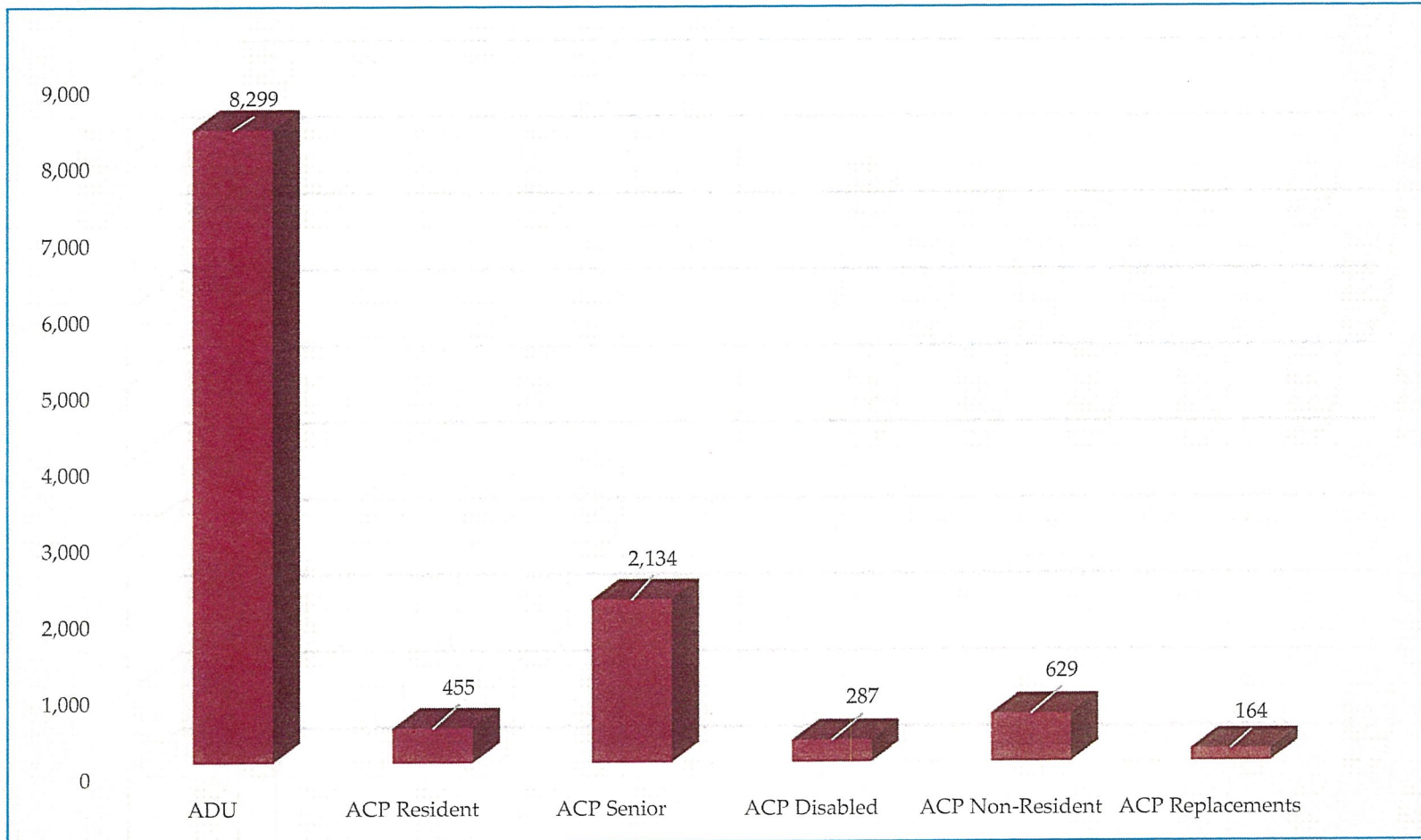
Parks Operational Budgets FY18



Annual Camping & Annual Day Use Revenue FY18



Annual Day Use (ADU) & Annual Camping (ACP) Passes Sold in FY18



Decision-Making: Park Management Plans



2015 BLUEWATER LAKE STATE PARK MANAGEMENT PLAN

New Mexico State Parks Division • Energy, Minerals, and Natural Resources Department

BLUEWATER LAKE STATE PARK MANAGEMENT PLAN 2015

ACTION PLAN

Below is a table summarizing the action items identified in the previous section. SPD staff prioritized the items by scoring them on the following criteria: maintenance, safety/regulatory, resource protection, revenue generation, efficiency, visitor experience and urgency. Each category is scored on a scale of -3 (negative impact) to +3 (positive impact). A score of zero equals no impact or a neutral impact. The scores for the individual categories are on the following page. All actions will be preceded by obtaining the necessary environmental and cultural survey clearances. Inclusion of an action item in this list is not a guarantee that the item will be implemented.

TASK	SCORE	COST ESTIMATE
Upgrade the existing dump station to accommodate times of high demand.	19	\$150,000
Design the Park's septic system to accommodate future demand and upgrade the current septic system as recommended.	18	\$130,000
Create a friends group for the Park.	18	\$0
Develop additional volunteer sites at Las Tusas and Stoneridge that have full RV hookups.	16	\$90,000
Complete construction of a new visitor center/park office/comfort station.	13	\$1,400,000
Replace or refurbish the water storage tanks and construct a new water treatment and distribution system.	13	\$250,000
Assess ways to consolidate park land as opportunities arise and define and delineate boundaries.	13	TBD
Repave the main park road through Stoneridge.	12	\$120,000
Improve the east group shelter and parking area to comply with ADA regulations and add ADA accessible vault toilet.	11	\$60,000
Make campsites at Lakeside and Northpoint Campgrounds pull-through rather than back-in.	10	\$10,000
Replace the east group shelter roof.	10	\$25,000
Demolish the comfort station at upper electric loop and replace with a vault toilet.	9	\$70,000
Add a new sign with a trail map at the trailhead near the Piñon Cliffs Campground.	8	\$1,000
Add up to ten campsites at Northpoint Campground.	8	\$25,000
Construct an equipment shelter behind the maintenance shop and enclose yard with coyote fence.	8	\$120,000
Evaluate and manage year-round operations at Las Tusas based on visitor demand.	8	TBD
Redefine and improve the Las Tusas campground area.	7	\$60,000

Management Plans in Action



Bluewater Lake State Park, Grants, Gallup
\$1.8 million

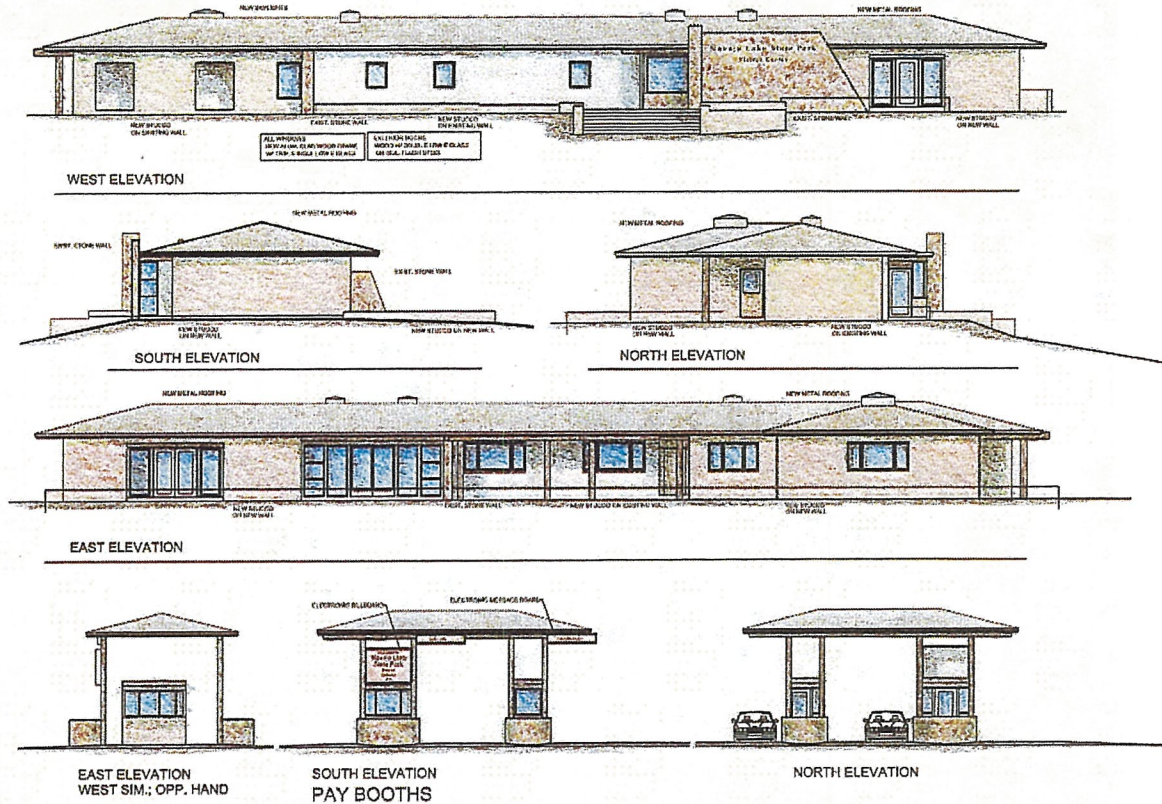
Supporting Parks: New Facilities

14



Yurts at Hyde Memorial State Park, Santa Fe

Supporting Parks: Federal Funds



Supporting Parks: Friends

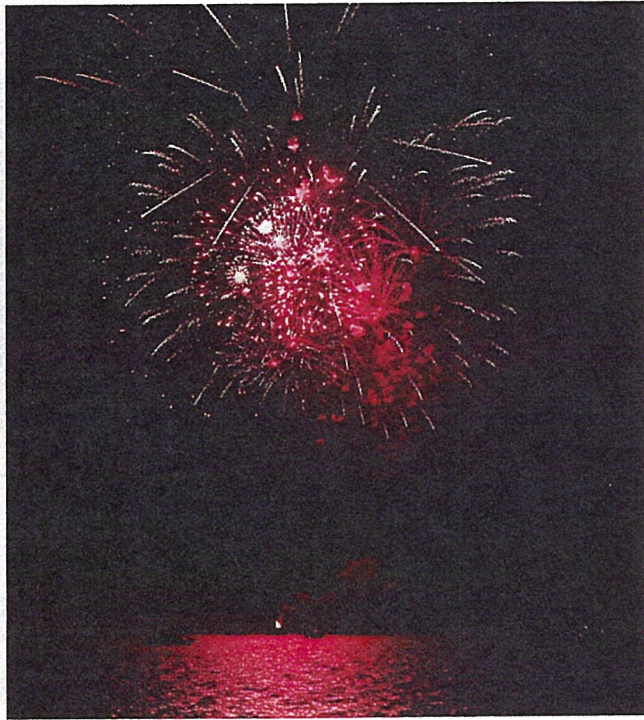
16



2018 Friends Group Summit

Park and Community Partnerships

17

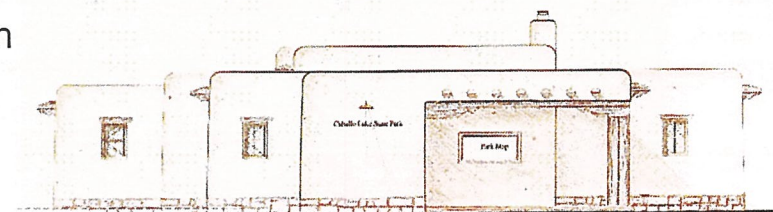
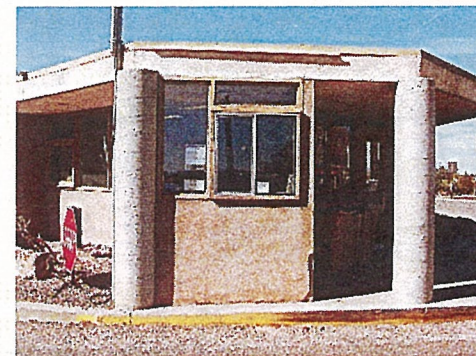


Elephant Butte Lake State Park, Elephant Butte,
Truth or Consequences and Williamsburg

Park Needs - FY20-FY21

Capital Improvement Projects

- Construct Caballo Lake State Park visitor point of contact
- New RV dump stations and waste treatment facilities at: Elephant Butte Lake (tie to city), Brantley Lake, Storrie Lake, Leasburg Dam, Navajo Lake and Coyote Creek State Parks
- Rehabilitate wells and water treatment systems at: Sugarite Canyon and Coyote Creek State Parks
- Water treatment plant improvements at Navajo Lake and Heron Lake State Parks
- Develop new campground facilities at Navajo Lake State Park
- Capital work in Pecos Canyon in advance of new State Park



Park Needs: Staff Retention

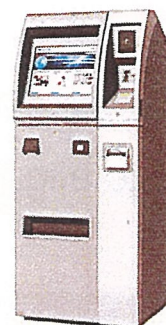
19

- Need to re-classify positions to align with other agencies
- Law Enforcement positions in particular
- Have excellent staff and need to retain!



Park Needs: Modernization

- Self Pay Kiosks



- WiFi in Parks



- Online Payments



Park Needs: Budgetary Support

- State Parks has faced budget cuts in past as well as cut this year from DGF
- Need support for new opportunities, such as potential Pecos Canyon State Park
- Assist with funding and staffing!

