

ANNA, AGE EIGHT: CONCEPTS

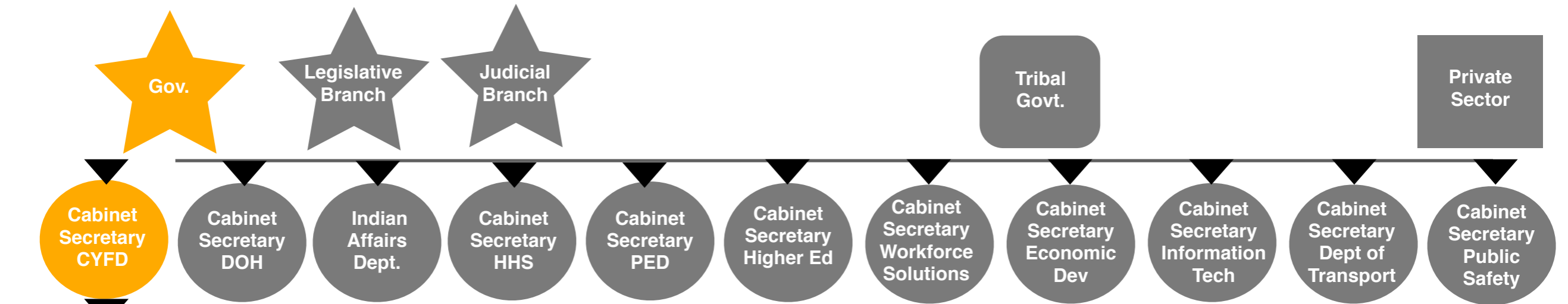
A DATA-DRIVEN PROCESS TO CREATE SAFE CHILDHOODS, SUCCESSFUL STUDENTS, AND HEALTHY FAMILIES

Graphic 1: Improving the CYFD system

Graphic 2: Creating a Cabinet-level Family Success Collaborative

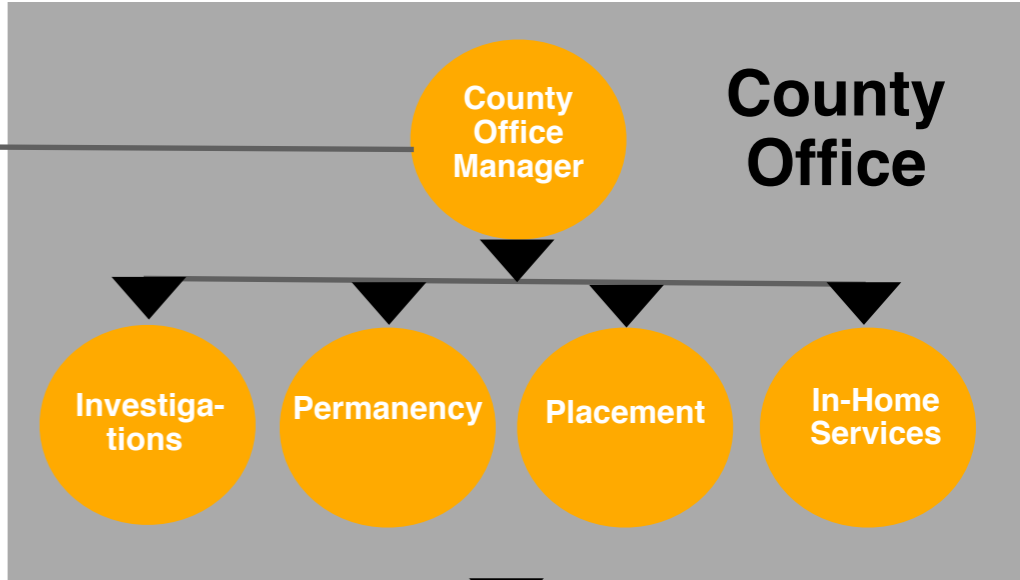
Graphic 3: Piloting a local ACEs Prevention Project in Las Cruces, NM

Developed by Katherine Ortega Courtney, PHD and Dominic Cappello, the authors of Anna, Age Eight: The data-driven prevention of childhood trauma and maltreatment.



Preventing child abuse and neglect requires that state departments work toward a shared goal of family safety.

1. Create Quality Improvement Unit



Improving the CYFD system

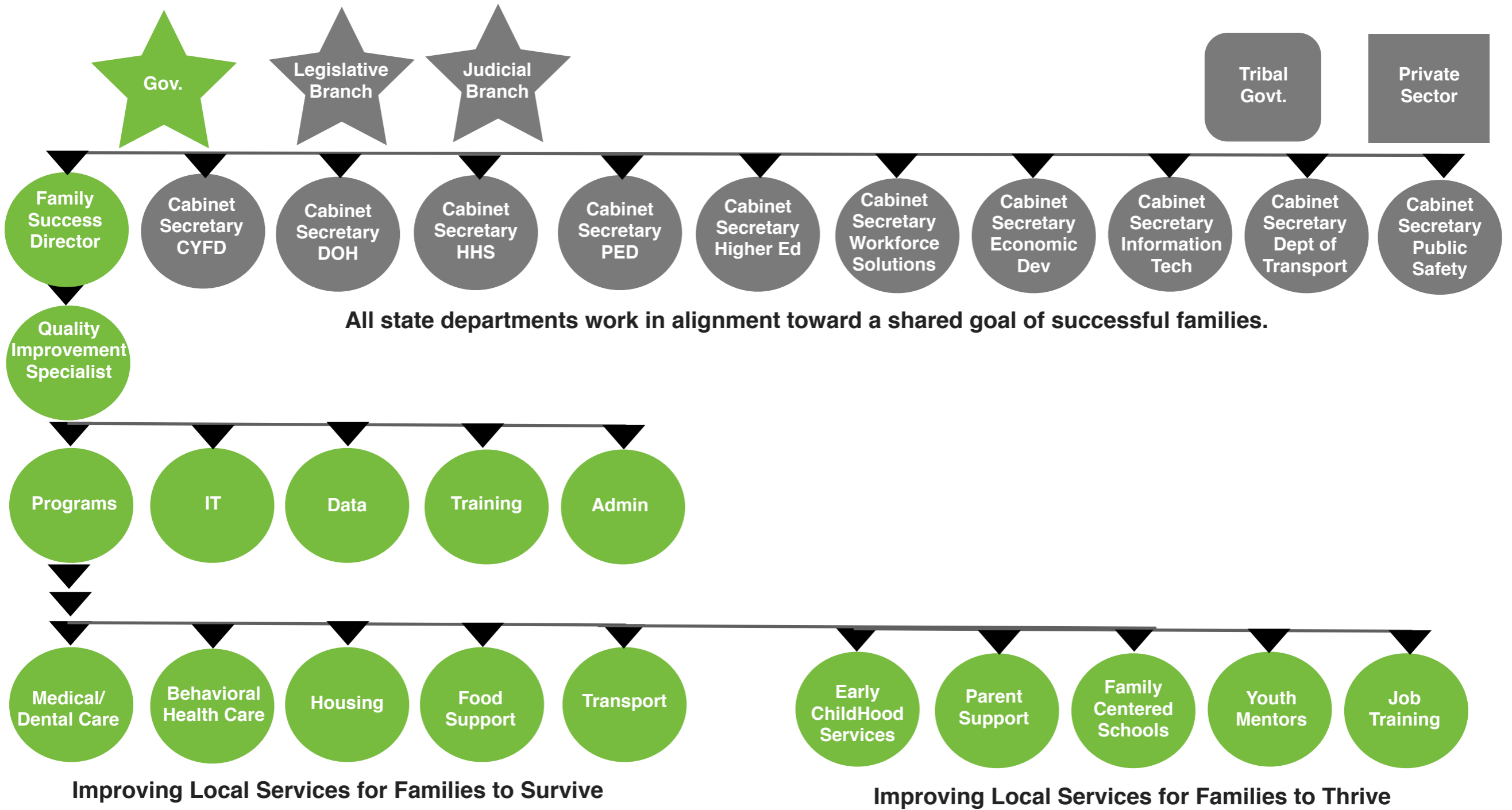
1. Data-Driven Quality Improvement

- Create Quality Improvement Unit
- Create technology and software upgrades
- Share data and strategies across entire agency
- Train leadership in quality improvement

2. Prevention Focus

- Create Office of Prevention
- Strengthen data-driven prevention
- Work cross-sector in counties
- Collaborate with and train local leaders

*This system map is only a partial representation of entities, staff and programs that impact children and families. Adapted from Anna, Age Eight © 2018 Katherine Ortega Courtney, PhD and Dominic Cappello www.AnnaAgeEight.org

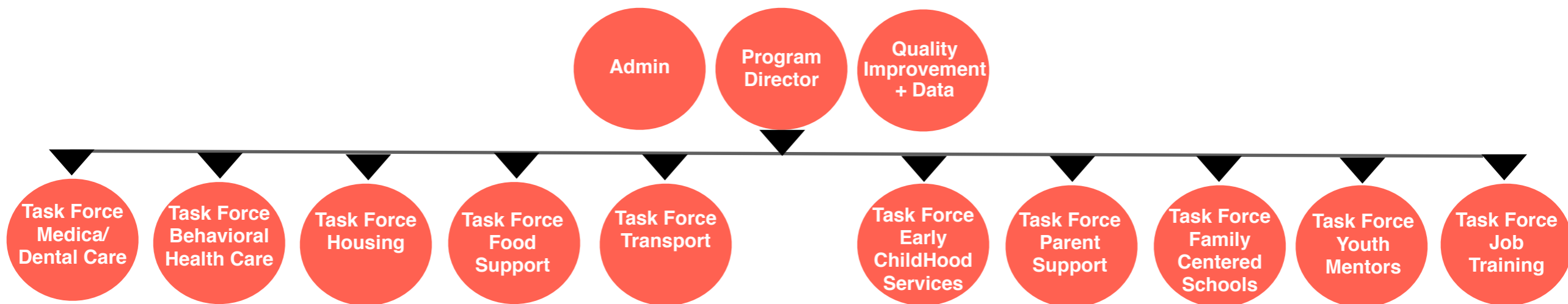
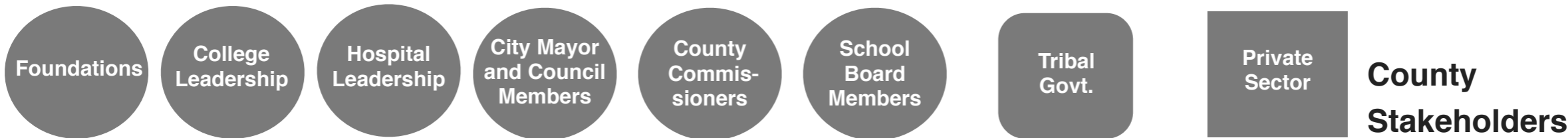


The Family Success Collaborative

A new cross-sector system of empowerment

This system strengthens a data-driven process of quality improvement focused on strengthening family services to achieve meaningful and measurable results for all families.





Improving Local Services for Families to Survive

Improving Local Services for Families to Thrive



Projected outcomes

- 1. Increase in family agency’s capacity to meet local needs
- 2. Increase in family’s use of vital family services
- 3. Increase in student achievement leading to employment
- 1. Decrease in adverse childhood experiences (ACEs)
- 2. Decrease in child maltreatment and juvenile justice involvement

Our kids aren’t safe. That changes now.

Anna, Age Eight
The data-driven prevention of childhood trauma and maltreatment

Katherine Ortega Courtney, PhD
Dominic Cappello

The Las Cruces Local Model for ACEs Prevention
The data-driven strategy based on Anna, Age Eight

This local program produces a cross-sector and data-driven process of quality improvement focused on strengthening services to improve safety, health, education and employment outcomes. Training empowers agency leaders. Task Forces, guided by the book *Anna, Age Eight*, work in alignment with all current county work focused on children, youth and families.

Pilot programs are currently implemented in Las Cruces, NM and Owensboro, KY

*This system map is only a partial representation of entities, staff and programs that impact children and families. Adapted from Anna, Age Eight © 2018 Katherine Ortega Courtney, PhD and Dominic Cappello www.AnnaAgeEight.org