

OFFICE OF BROADBAND ACCESS AND EXPANSION

Land Grant Committee – October 23, 2023

Drew Lovelace, *Acting Broadband Director*

(505) 795-1672 Drew.Lovelace@connect.nm.gov

OFFICE OF BROADBAND ACCESS AND EXPANSION

Topics

- OBAE
- Successes
- Upcoming Successes
- Programs
- BEAD
 - Timeline
 - Definitions
 - Priorities
 - Unserved Map
- Challenges
- Legislative Priorities
 - Workforce development
 - Capital investments
 - Support services

OBAE

- Created in 2021 Legislation the Office got started in June 2022.
 - Captured \$780M in Federal Funding
 - Managing \$170M in State Funding
- Vision: Achieve enterprising, affordable broadband solutions for New Mexicans that honor the state's rich heritage and elevate quality of life for all
- Values: Seven values defining OBAE's people, processes, planning, and programs:
 1. courageous
 2. honest
 3. curious
 4. innovative
 5. respectful
 6. collaborative
 7. analytically rigorous

Successes

Team is growing

- September 2022 – 2 employees
- September 2023 – 20 employees and growing
 - Adding
 - Program coordinators
 - Project managers

BEAD

- 22 of 23 Tribal consultations for BEAD complete!
- 5-year strategy plan submitted
- Initial Proposal Volume 1 posted for public comment

Connect New Mexico Fund

- Apply now

Tribal Dashboard Taskforce

- Dashboard

Upcoming Successes

BEAD

- Initial Proposal Volume 2
 - Public Comment November 15

Initial Proposal Deadline

- December 28

Digital Equity Plan

- Draft November 28 to NTIA
- Public Comment End of December/January
- Due February 28

3-Year Strategic Plan

- Update January 1

Be Pro Be Proud

- Bus Launch Nov 9th

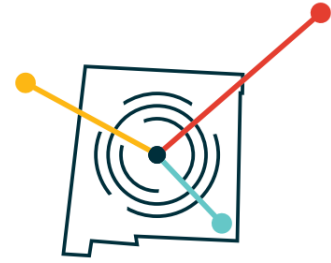
Connect New Mexico Fund Infrastructure Grant

- \$70 M launch Q4

DOT

- Middle Mile Project

Grant Writing, Engineering, & Planning Grant Program (GWEP)



New Mexico Grant Writing, Engineering, & Planning Program (GWEP)

What is the Grant Writing, Engineering, and Planning (GWEP) Grant:

- The Office of Broadband Access and Expansion (OBAAE) will award financial assistance grants to aid Tribal governments and local governmental units in procuring grant writing, engineering, and/or planning assistance to help identify community broadband needs and to support applying for other funding sources for broadband-related projects.

Who may apply:

- Tribal governments
- Local governmental units (federal government, state government, local/municipal governments, public or municipal organizations that are government owned and operated, units of a state university system)
- Rulemaking is in progress to open this opportunity to rural telephone cooperatives and rural electric cooperatives at a future date; this will be announced when eligible

What kind of funding is available?

- Maximum grant award is \$100,000
- Grant funds are limited; application will remain open until all funds are obligated.
- Matching funds are not required.

How to apply:

- We have created an application portal through Submittable . Use the button below to apply.

[APPLY NOW](#)

Connect New Mexico Fund \$5 Million

- Launched 10-18-23
 - Tribes
 - Local Governments
 - Electric Co-ops
 - Telco Co-ops

Programs

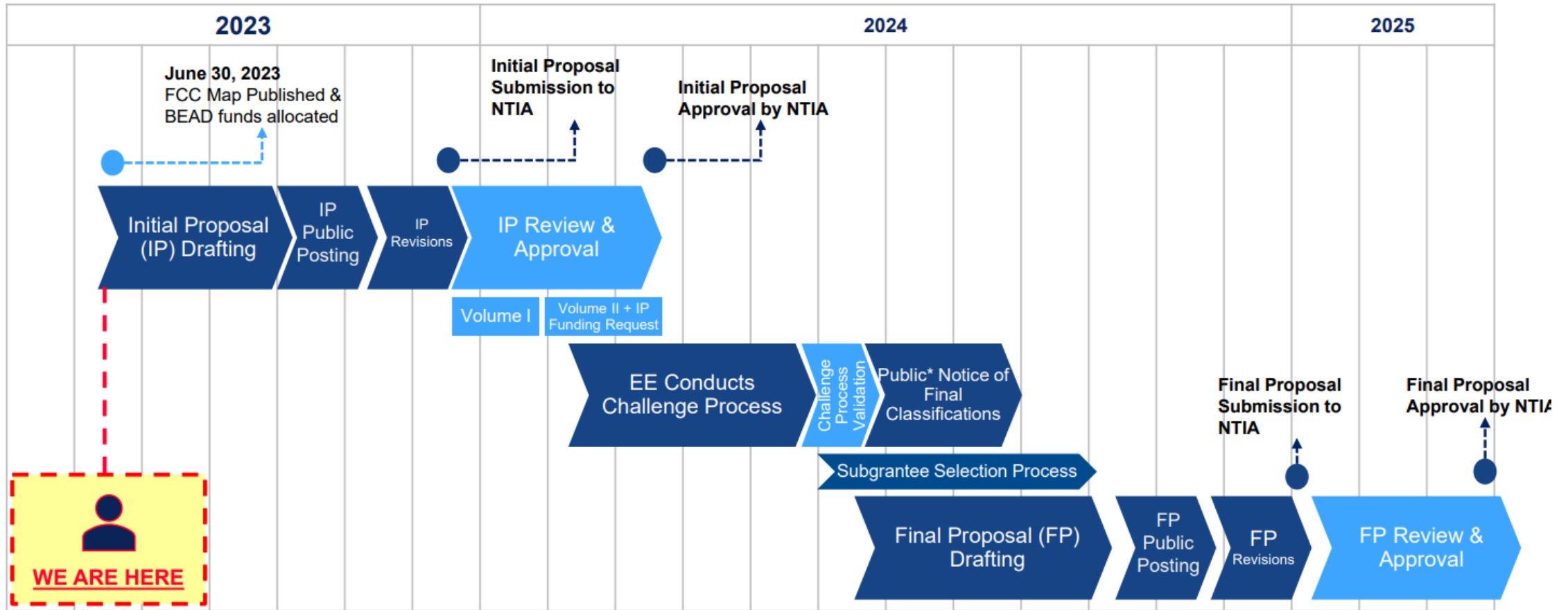
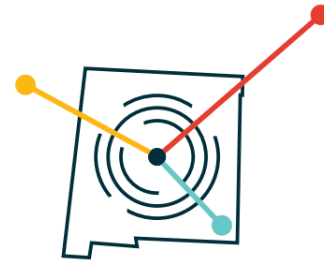
2023 Programs

- Connect New Mexico Pilot - \$117M Awarded 2023
- Grant Writing, Engineering Planning – \$5M Open October 2023
- Connect New Mexico Infrastructure Grant - \$70M Q4 2023

2024-2025 Programs

- Broadband Equity, Access, and Deployment (BEAD) - \$675M
- Connect New Mexico School Infrastructure - \$25M
- Digital Equity – \$??? NTIA Grant releasing Summer 2024

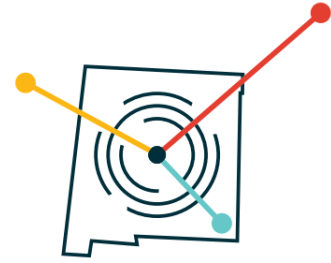
BEAD



*Per the BEAD NOFO, an Eligible Entity must provide public notice of the final classification of each unserved location, underserved location, or Eligible Community Anchor Institution within the jurisdiction of the Eligible Entity after resolving each challenge and at least 60 days before allocating grant funds for network deployment.



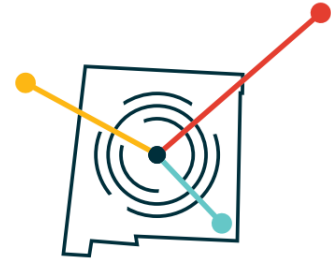
BEAD



Definitions you need to know:

- Unserved
 - 25 download / 3 upload and below
- Underserved
 - Between 25 download/ 3 upload and 100 download / 20 upload
- Served
 - 100 download / 20 upload and above
- BSL – Broadband Serviceable Locations (building)
- CAI - Community Anchor Institutions
- MDU – Low Income Multi-Dwelling Units

BEAD - Priorities

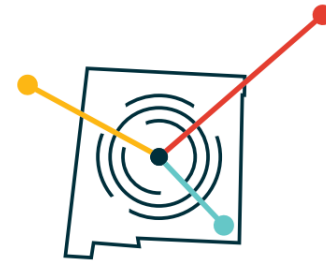
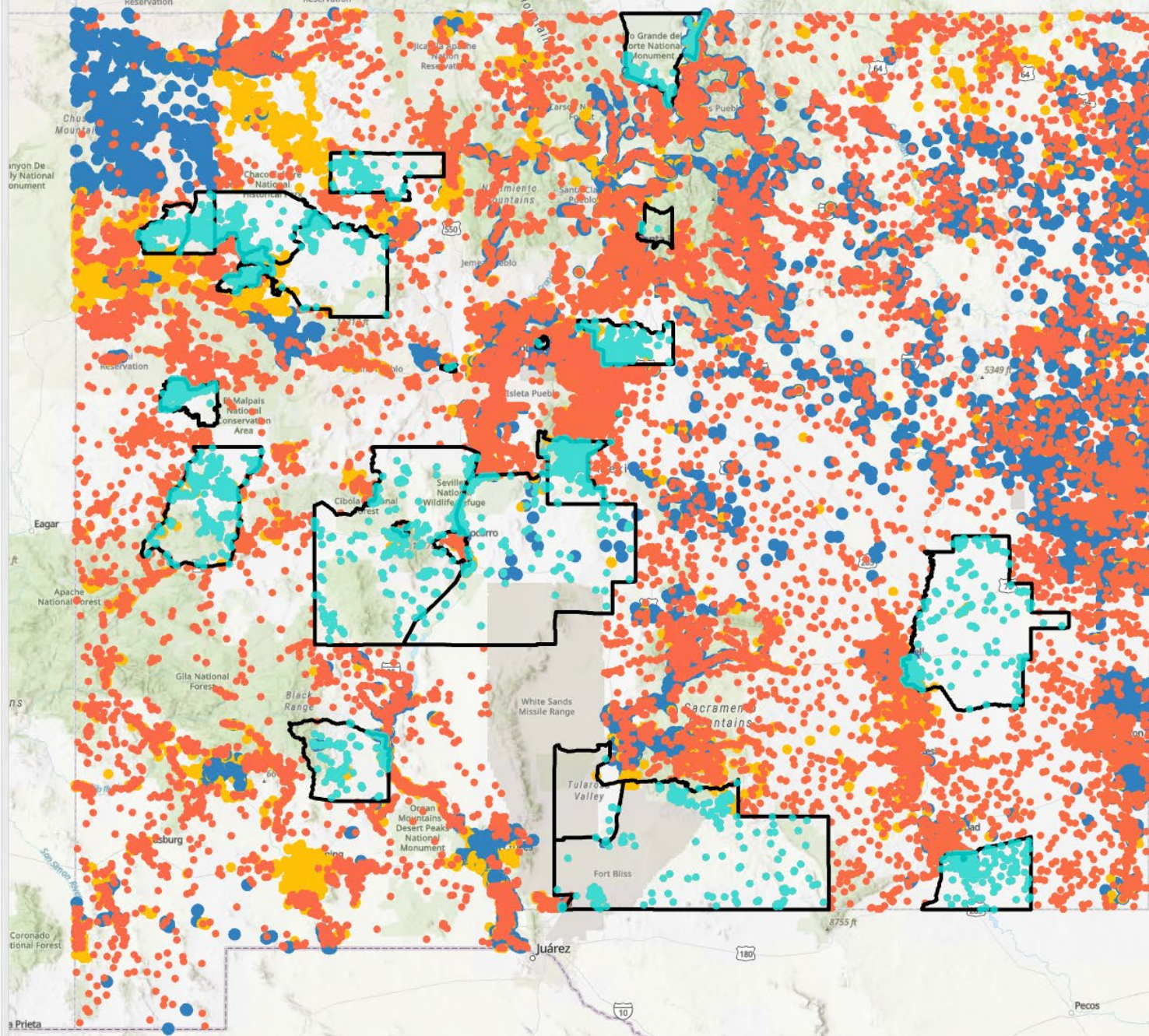


Priorities:

1. Unserved BSLs – 100%
2. Underserved BSLs
3. CAIs
4. MDUs

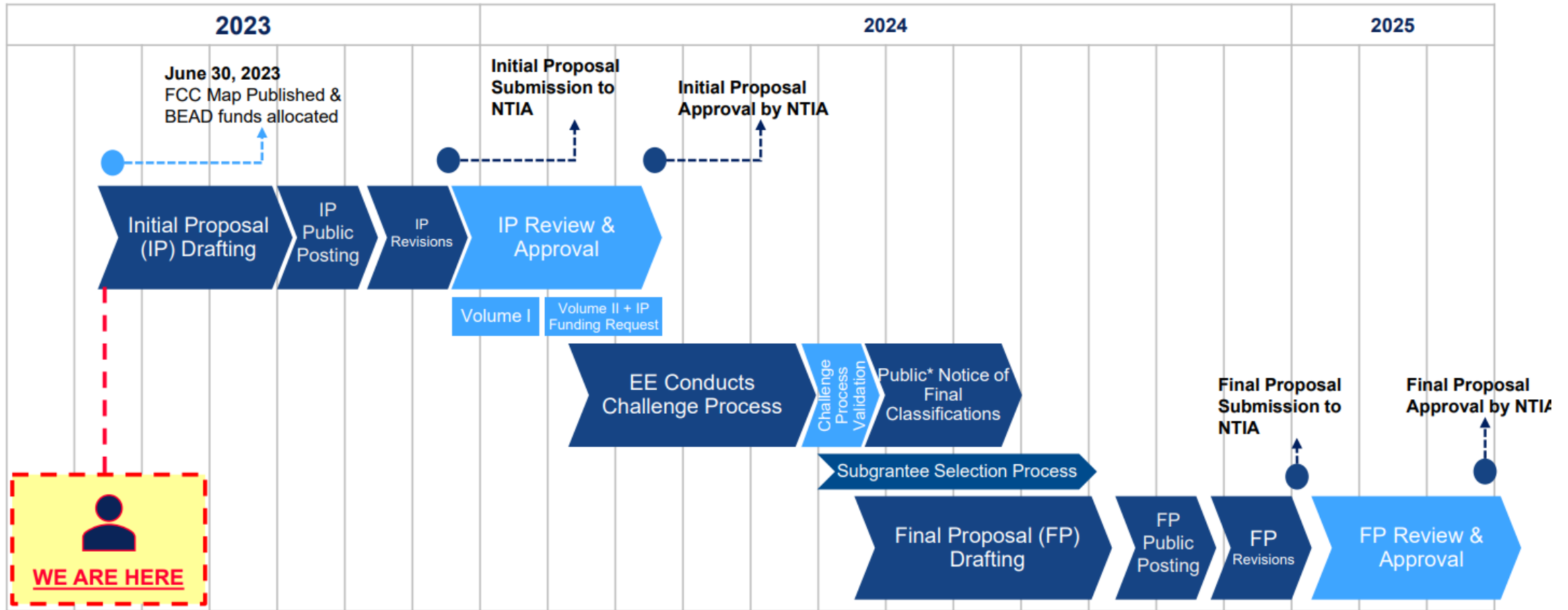
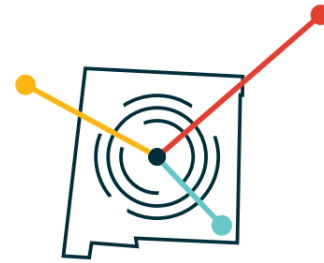
- High-Cost Census Block Group
-
- NM Best BSL BDC Service Data
- Served
- Underserved
- Unserved

10,192
Unserved BSL's
in NTIA BEAD
High-Cost Areas



70k Unserved
10k Unserved in
24 High-cost
areas

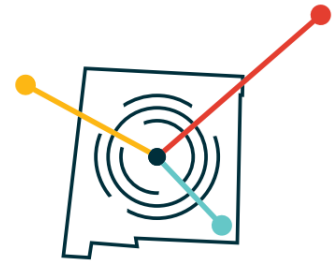
BEAD



*Per the BEAD NOFO, an Eligible Entity must provide public notice of the final classification of each unserved location, underserved location, or Eligible Community Anchor Institution within the jurisdiction of the Eligible Entity after resolving each challenge and at least 60 days before allocating grant funds for network deployment.



Challenges: 2023-2029



Infrastructure Funding

BEAD

- \$42.5 Billion dollars will be injected into 50 states and 6 territories

TBCP

- \$3B across all tribal nations

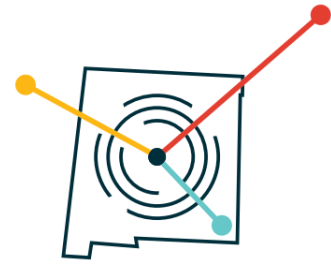
NEVI

- \$4.1 Billion for Electric vehicles across 50 states

Federal Highway Programs

- \$350 Billion for federal highways

Challenges: Labor Gap

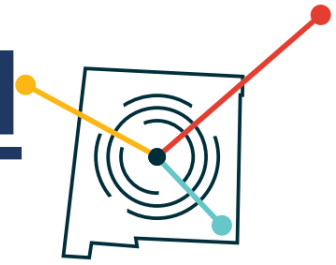


State Summary: New Mexico

BEAD demand makes up 15% of New Mexico's cross-industry deficit

BEAD Occupation Group	BEAD Demand (FTEs)	Cross-Industry Deficit (FTEs) ¹	Deficit / Supply ²
2026 Totals	(1.4K)	(9.8K)	-9.2%
Laborers and material movers	(372)	(2,874)	-10.3%
Trucking crew	(317)	(2,379)	-9.2%
Trenchers	(160)	(1,198)	-10.2%
Fiber and wireless technicians	(138)	(1,091)	-9.3%
Equipment operators	(91)	(509)	-7.6%
Structural engineers	(89)	(224)	-4.3%
Software engineers	(70)	(450)	-9.0%
Master and stage electricians	(61)	(402)	-8.9%
Network architects and coordinators	(43)	(186)	-6.1%
RF & field engineers	(38)	(120)	-4.4%
Surveyors and drafters	(30)	(216)	-8.8%
Inspectors (e.g., permit, health & safety)	(25)	(141)	-7.3%

Challenges: What this means for NM business

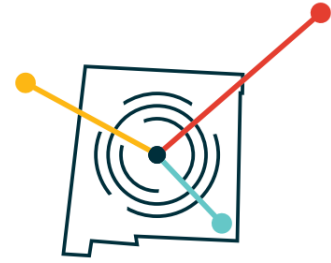


Over the next five years an estimated \$3+ Billion dollars of infrastructure money will flow into NM.

Problem:

- That is a lot of infrastructure all at the same time.
 - Employees
 - Skilled labor
 - Administrative staff
 - Accountants
 - HR
 - Equipment
 - Supply chain

OBAE Challenges



Gap

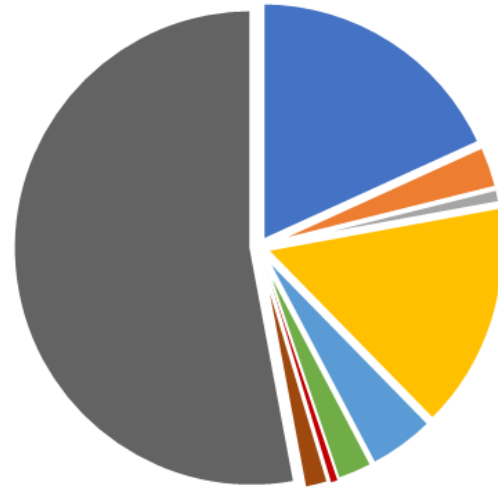
- \$2.1 Billion

Partnerships

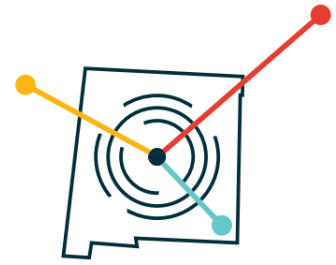
- OBAE's mission is not every private entities mission

Gap

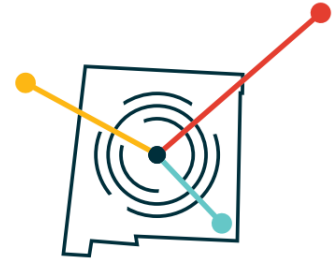
\$4 billion estimated needed to build infrastructure in NM



- \$ Won so far in NM for Infrastructure (not counting Digital Equity)
- ARPA Funds for Broadband
- Additional Tribal TBCP Phase 2 expected
- Expected NTIA BEAD funding
- 25% match for ARPA and BEAD
- CNMC fund
- State middle mile fund
- Miscellaneous funds (GEER2, EANS, SEN, libraries etc) over 6 years
- State or other sources of investment needed



OBAE Challenges



Administrative attachment

- \$1 Billion organization
- Procurement and speed of mission
- Travel

State Education Network

- PSFA employees and funding continue to have obstacles

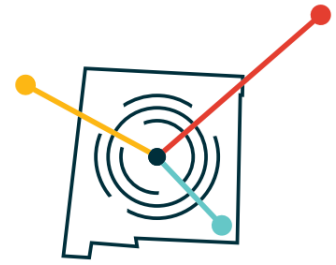
ROW, Permits, Pole Attachments

- Active Projects Being descoped
- Unclear cost increases

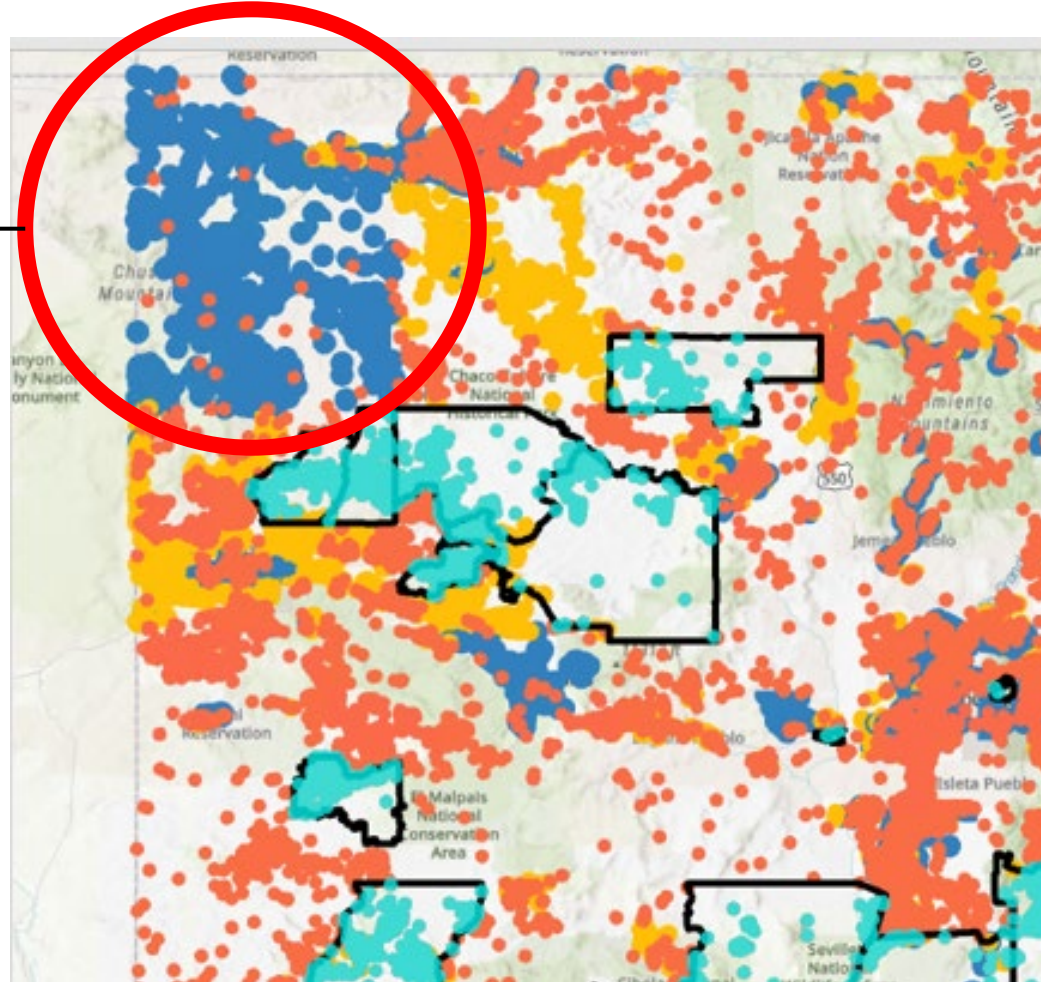
Mapping

- Better Data
- Tribal Support
- County Support

Mapping



Served by
Fiber



Legislative Priorities

Financial Priorities

Operating Budget:

\$8,087,200

- Increase from \$1.2M
- 20 Employees moving from STRM to PERM
- 5 Employees moving from PSFA to OBAE

\$250,000,000 Connect New Mexico Fund:

- Programs and Grants
 - Infrastructure
 - Middle Mile
 - 5G and Towers
 - Last Mile
- Community Anchor Institutions
- Match
- Affordable Connectivity Program Supplement for Students
- Workforce Dev

Legislative Priorities

3 Bill Priorities

1. OBAE operating autonomously
 - Address ownership (DoIT vs. OBAE)
2. PSFA SEN Program, Employees, Fund
 - Move employees
 - State Education Network
 - E-Rate School Support
 - \$10 Million fund to Connect New Mexico Fund
3. ROW
 - Electrical ROW Easements used for Broadband
 - Rate structure pole attachment
 - Make Ready Costs

Questions?



Drew Lovelace is the Acting Director for the Office of Broadband Access and Expansion (OBAE). He is guiding the OBAE team in orchestrating statewide initiatives to proactively secure and allocate over \$675 million in federal broadband funding. Additionally, he is championing efforts to bolster New Mexico's connectivity on a statewide scale. Drew possesses more than two decades of diverse private sector expertise, spanning industries such as Information Technology and the Outdoor Industry. In his recent four-year tenure, he has dedicated his skills to serving the State of New Mexico. Drew holds Bachelor's degrees in English Literature and History from the University of Colorado at Boulder, an MBA from the University of New Mexico, and maintains both SHRM-SCP and PHR certifications. Residing in Santa Fe and Chamisal with his wife, two children, and loyal dog, he finds joy in both work and family life.



Drew.Lovelace@connect.nm.gov

(505) 795-1672