

Daniel Benavidez
Superintendent
(505) 782-5511

Daniel.benavidez@zpsd.org

Martin Romine
Chief Financial Officer
(505) 782-5511

Martin.romine@zpsd.org

Randy Stickney
Director of Instructional
Support
(505) 782-5511 e.6401

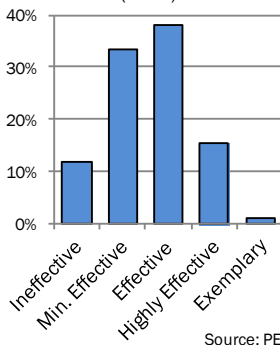
Randy.stickney@zpsd.org

Caroline Ukestine
Director of Federal Prog.
(505) 782-5511 e.6401

Caroline.ukestine@zpsd.org

Mark Archuleta
Director of Support
Services
(505) 782-5566

Percent of Teachers at Effectiveness Ratings (FY16)



2016-2017	Number	%
Total Teachers	93	
Highest Degree Bachelors	58	62%
Highest Degree Masters	35	38%
Endorsement Waivers	0	0%

Source: PED

Zuni Public Schools								
Title I, School Grade Report, and Weighted New Mexico Facility Condition Index								
School Name	Title I	School Grade					School Condition (FY18)	
		FY12	FY13	FY14	FY15	FY16	wNMCJ*	PSFA Rank**
ELEMENTARY								
A:Shiwi Elementary	Y	D	D	F	C	D	0.0%	734
Dowa Yalanne Elementary	Y	D	D	F	A	D	0.0%	729
MIDDLE								
Zuni Middle	Y	F	F	F	D	F	32.4%	48
HIGH								
Twin Buttes High	Y	D	B	C	C	C	4.4%	636
Zuni High	Y	D	B	C	B	C	4.8%	626

*Statewide average wNMCJ: 19 percent.

Sources: PED and PSFA

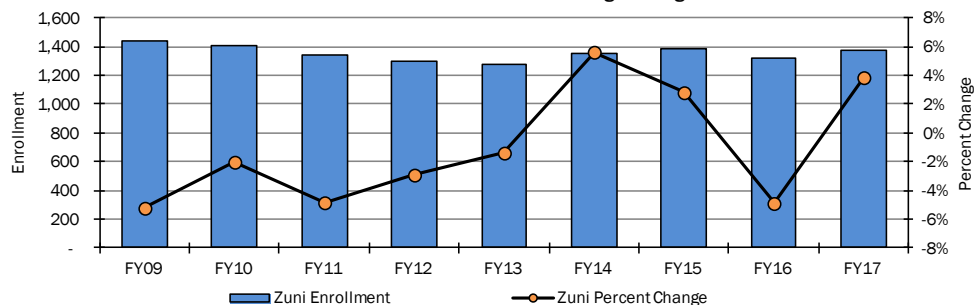
**Ranks closer to 1 indicate the school facility is in worse condition.

School District Operational Expenditures*	2015-2016 Expenditure			2016-2017 Budgeted		
	Zuni		Statewide	Zuni		Statewide
	Expenditure	Percent	Percent	Expenditure	Percent	Percent
Direct Instruction	\$6,434,674	52.1%	61.5%	\$6,549,272	53.5%	60.2%
Instructional Support Services	\$5,913,340	47.9%	38.1%	\$5,702,908	46.5%	39.6%
Students	\$1,048,439	8.5%	9.9%	\$985,144	8.0%	9.9%
Instruction	\$182,621	1.5%	2.7%	\$166,142	1.4%	2.8%
General Administration	\$510,138	4.1%	2.0%	\$515,594	4.2%	2.2%
School Administration	\$840,409	6.8%	6.7%	\$879,615	7.2%	6.4%
Central Services	\$758,862	6.1%	3.5%	\$698,811	5.7%	3.5%
Operations & Maintenance	\$2,526,129	20.5%	13.0%	\$2,098,066	17.1%	13.4%
Student Transportation	\$42,905	0.3%	0.2%	\$29,400	0.2%	0.2%
Other Support Services	\$3,838	0.0%	0.1%	\$330,136	2.7%	1.2%
Non-Instructional Support	\$0	0.0%	0.2%	\$0	0.0%	0.2%
Food Service	\$0	0.0%	0.1%	\$0	0.0%	0.1%
Community Service	\$0	0.0%	0.0%	\$0	0.0%	0.0%
Capital Outlay	\$0	0.0%	0.2%	\$0	0.0%	0.0%
TOTAL OPERATIONAL EXPENDITURES	\$12,348,014			\$12,252,180		

*Includes general fund revenue only

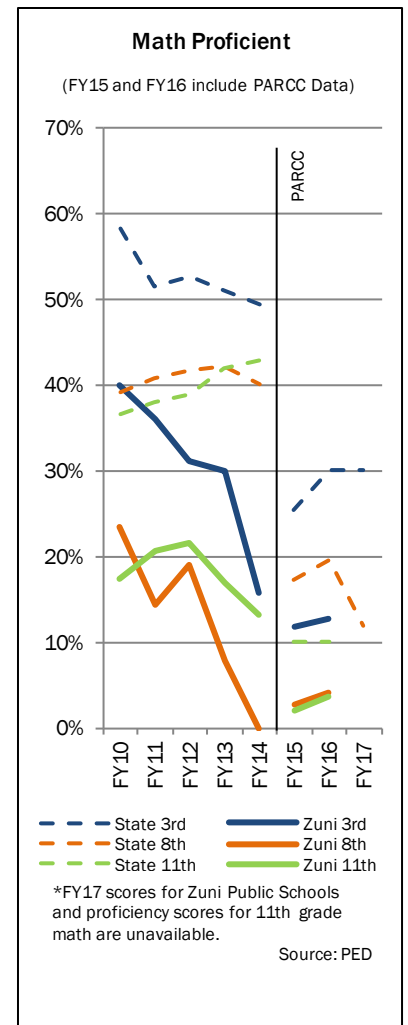
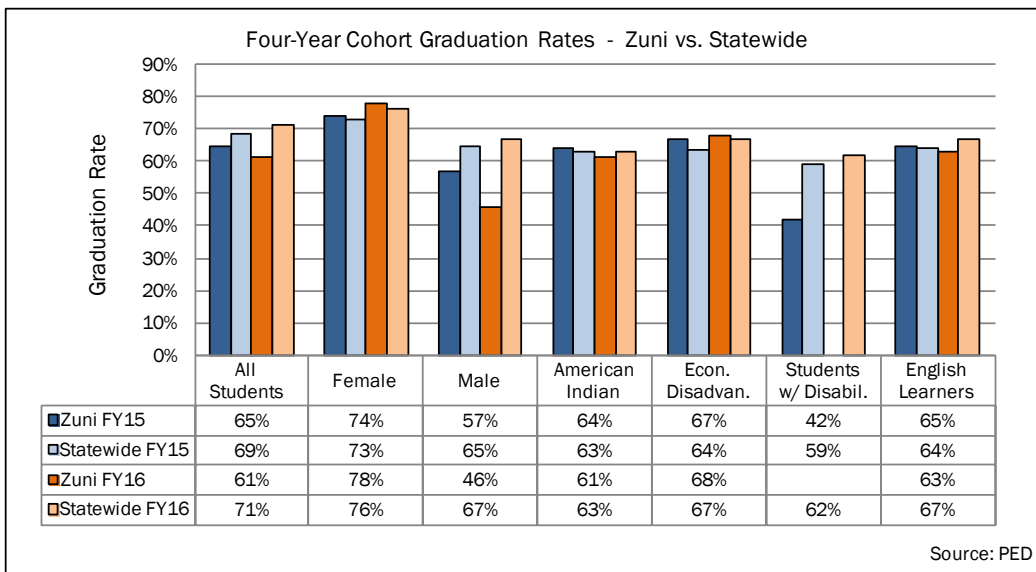
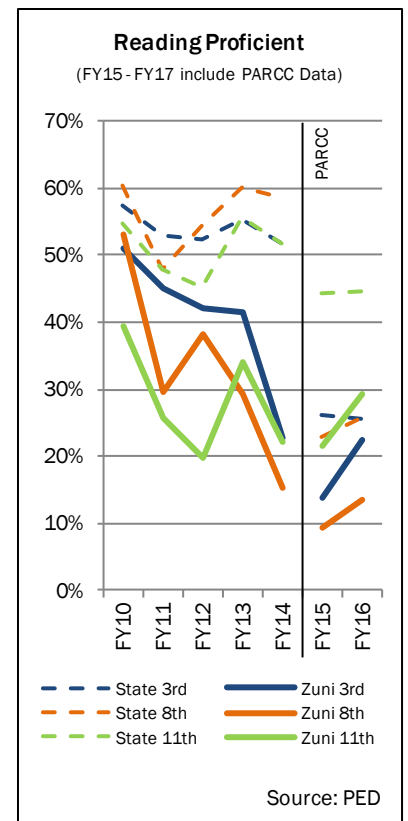
Source: PED

Enrollment Data with Annual Percentage Change



Data on District Land Valuation and Levies	
Residential Valuation	\$15,910
Non-Residential Valuation	\$2,391,396
2013 Oil & Gas, 2014 Copper	\$0
Total Valuation	\$2,407,306
Total Residential Mills Outstanding	2.5
Total Non-Residential Mills Outstanding	2.5
Total Copper, Oil & Gas Mills Outstanding	0.0
Total Bond Capacity	\$144,438
Bonds Outstanding on 12/31/15	\$0
Total Indebtedness	0.0%
Assessed Valuation Per MEM	\$1,809

Source: PED (As of 12/31/2016)



2016-2017 Student Demographics				
	Zuni Public Schools		Statewide	
	Students	Percent	Students	Percent
Female	632	46.8%	164,149	48.9%
Male	718	53.2%	171,545	51.1%
Caucasian	9	0.7%	82,116	24.5%
African American	0	0%	7,302	2.2%
Hispanic	2	0%	205,853	61.3%
Asian/Pacific Islander	18	1.3%	4,880	1.5%
Native American	1,321	97.9%	35,543	10.6%
Multiracial	0	0%	12	0%
English Learners	425	31.5%	48,275	14.4%
Students with Disabilities	160	11.9%	49,729	14.8%
Free/Reduced Lunch	1,346	99.7%	240,438	71.6%
Immigrant/Migrant	0	0.0%	2,778	0.8%

Source: PED

