

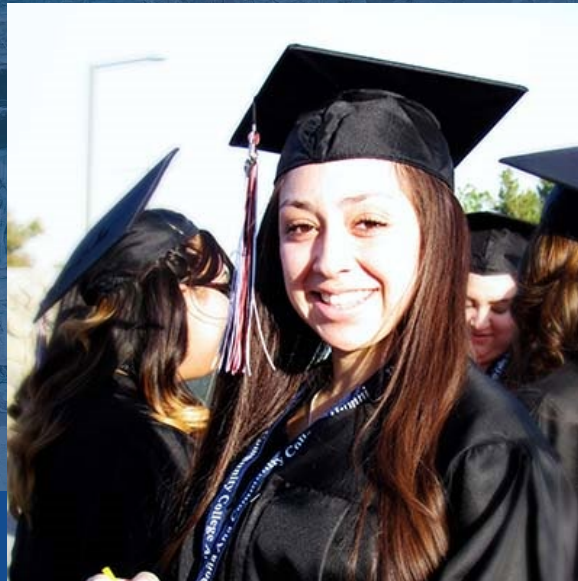
Doña Ana Community College

Welcome

Mónica F. Torres
President

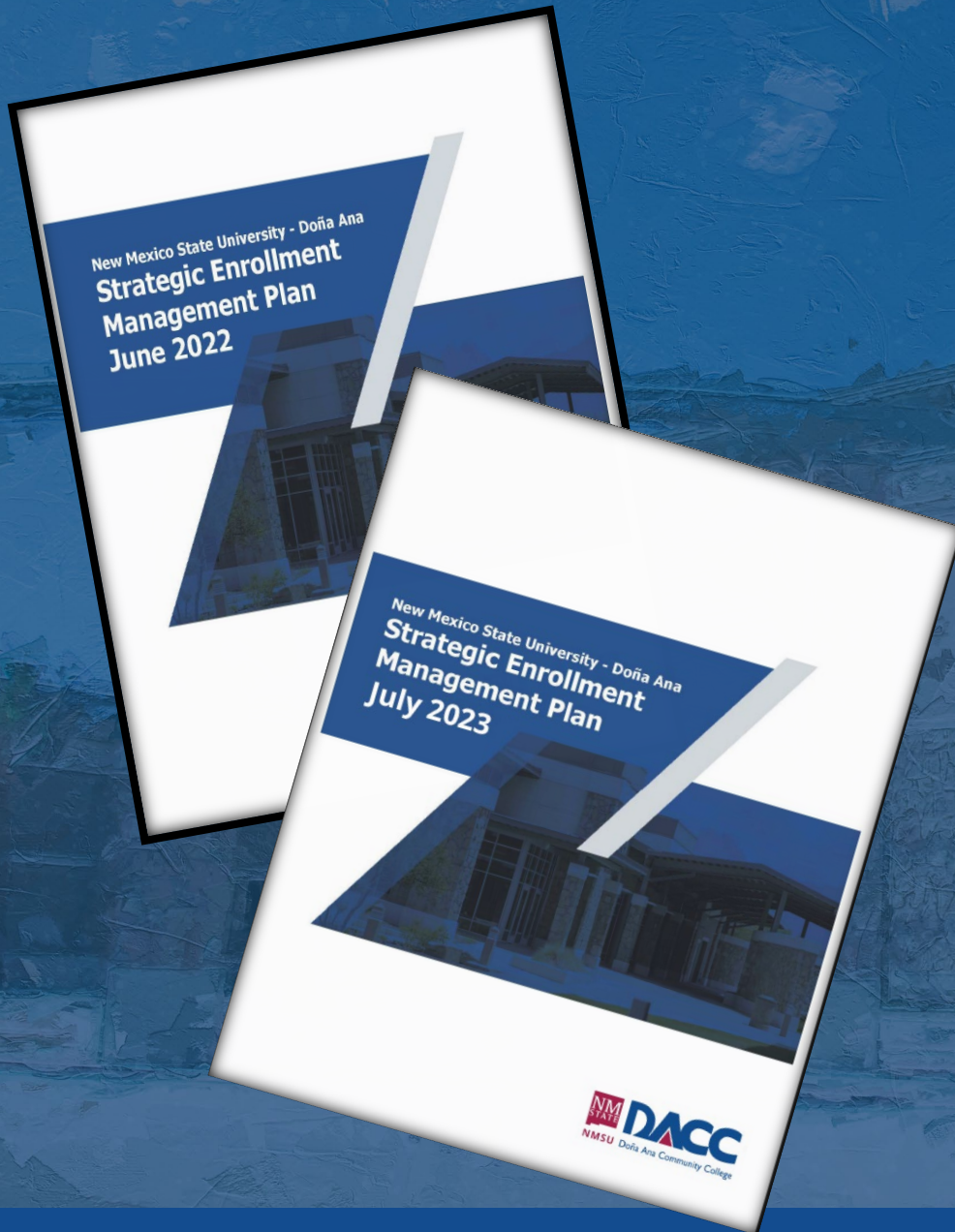
Our Commitment:

To ensure that
people in the
communities we
serve can access
and benefit
from services and
resources at
DACC.



Enrollment Priorities: "Things that Matter"

- Access: Increase number of community members who access our services.
- Support: Increase number of students who use college and community resources that have been shown to support success.
- Completion: Increase number of students who reach their academic goals.
- Efficiency: Adapt operations to support these results.



DACC Sites & Facilities

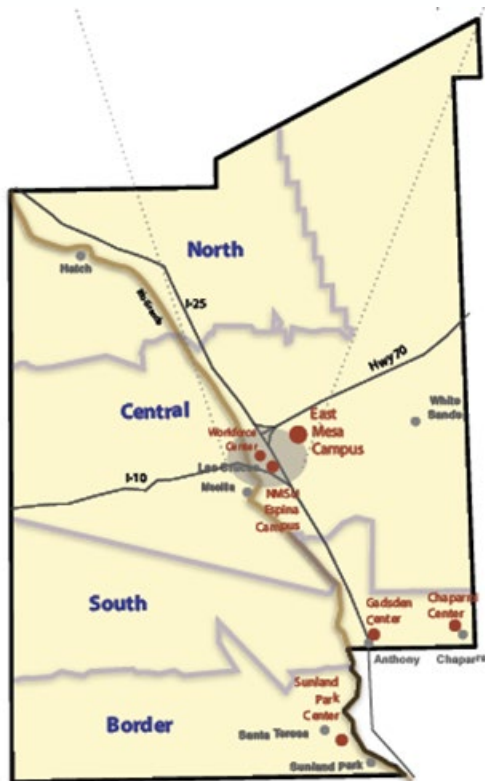
East
Mesa
Campus



Workforce
Center



Espina Campus at NMSU



Gadsden Center



Chaparral Center



Sunland Park Center

DACC Programs

East
Mesa
Campus



CREDIT OPTIONS

- 44 associate degree
- 76 certificates
- Workforce programs
- Transfer programs



Gadsden Center



Chaparral Center



Workforce
Center



Espina Campus at NMSU



Sunland Park Center

DACC Programs

East
Mesa
Campus



Non Credit Options

- Workforce Training
- Adult Education (HSE/ESL)
- Small Business Support (SBDC)



Workforce
Center



Espina Campus at NMSU



Gadsden Center

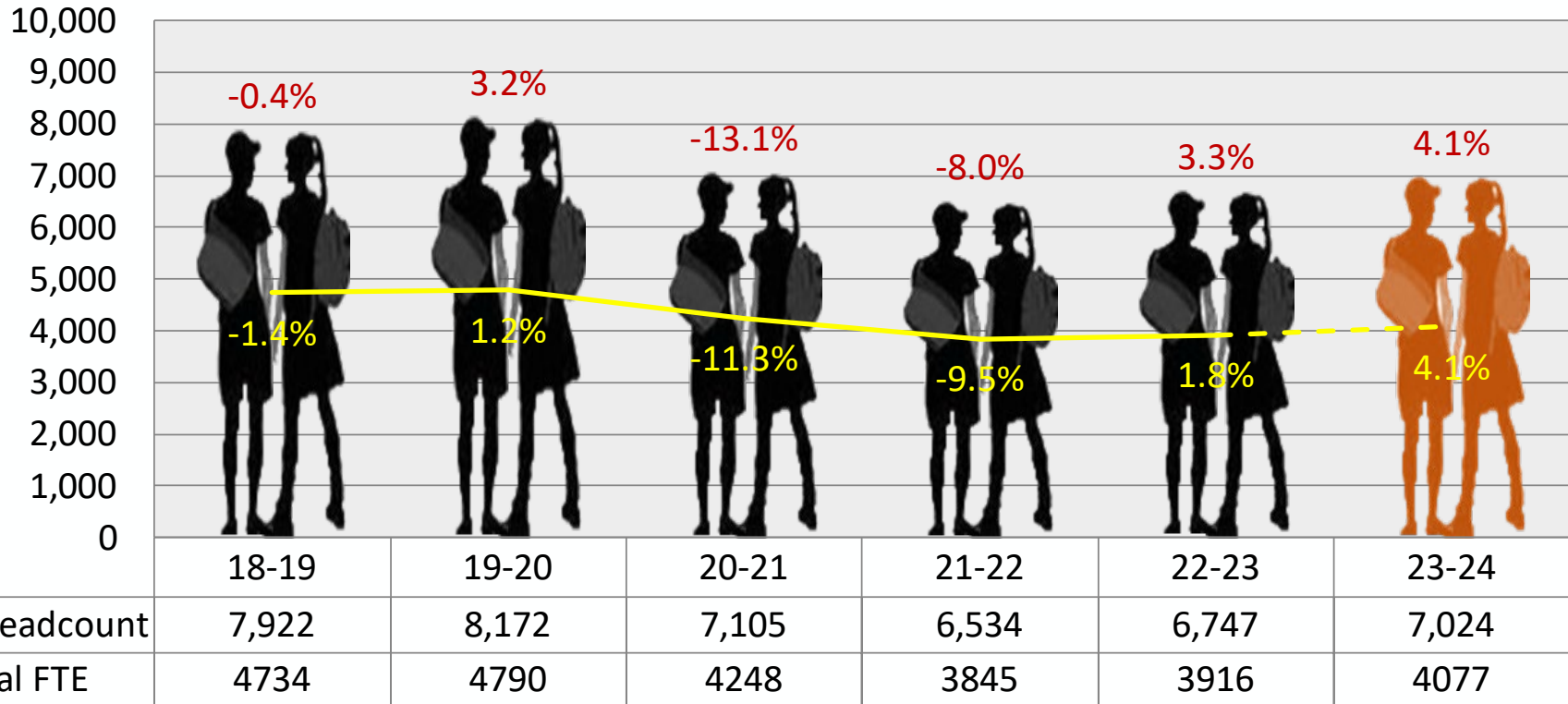


Chaparral Center



Sunland Park Center

DACC Enrollment Data



Note: Annual FTE for FY23-24 is estimated as of July 2023

<https://public.tableau.com/profile/do.a.ana.community.college.institutional.analysis#!/>

More about DACC Students: Certificates and Associate Degrees

	2019-2020	2020-2021	2021-2022
Certificates (less than one year)	118	107	80
Certificates (more than one less than two years)	384	318	289
Associate Degrees	1017	889	906
Total	1519	1314	1275

Thank you!

Contact Information:
Mónica F. Torres, Chancellor
NMSU System Community Colleges
mftorres@nmsu.edu
575.527.7511

