

# Cumbres & Toltec Scenic Railroad Ongoing Capital Programs



ANTONITO, CO



COLORADO  
NEW MEXICO

COLORADO  
NEW MEXICO

CUMBRES & TOLTEC



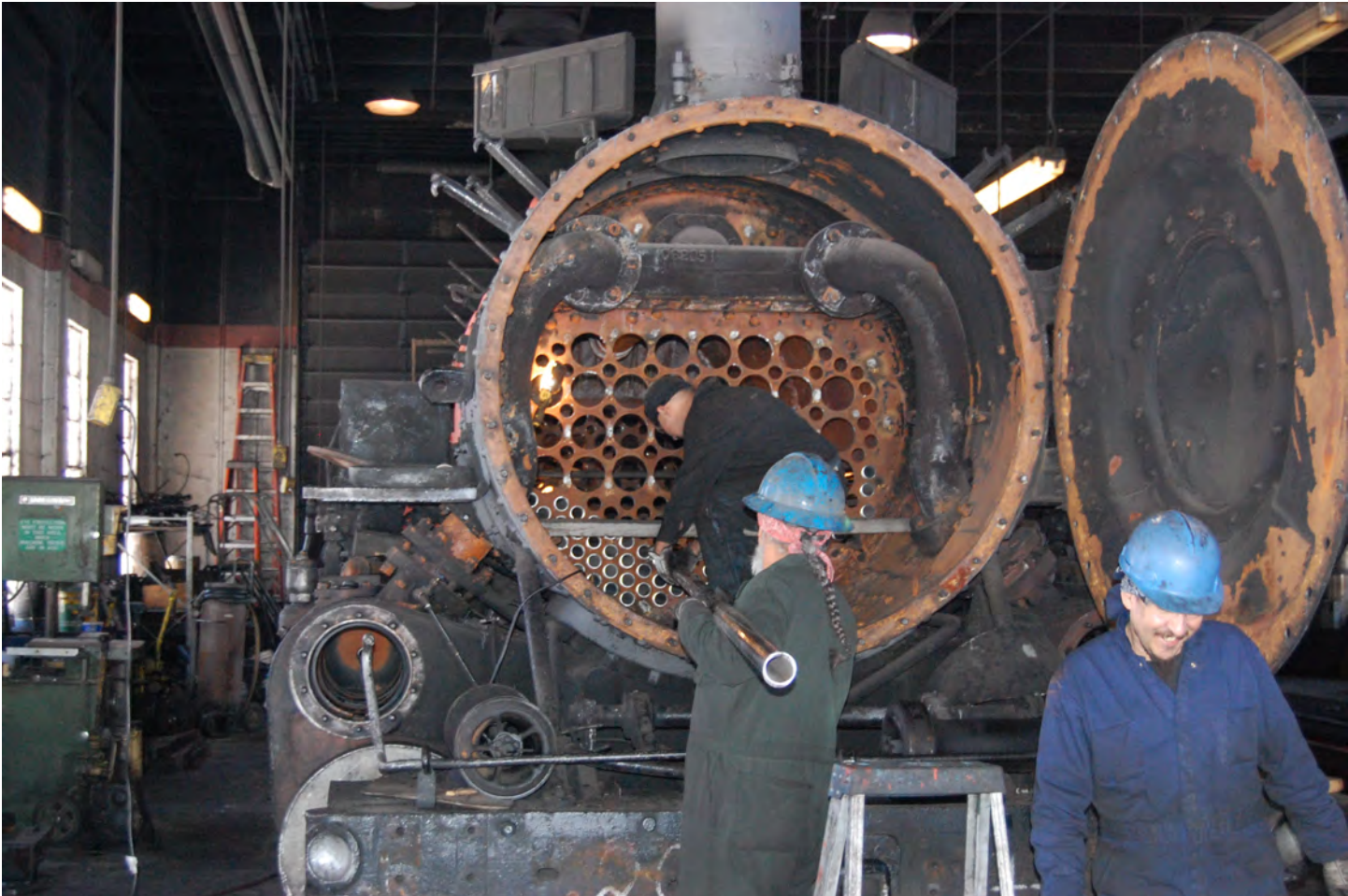
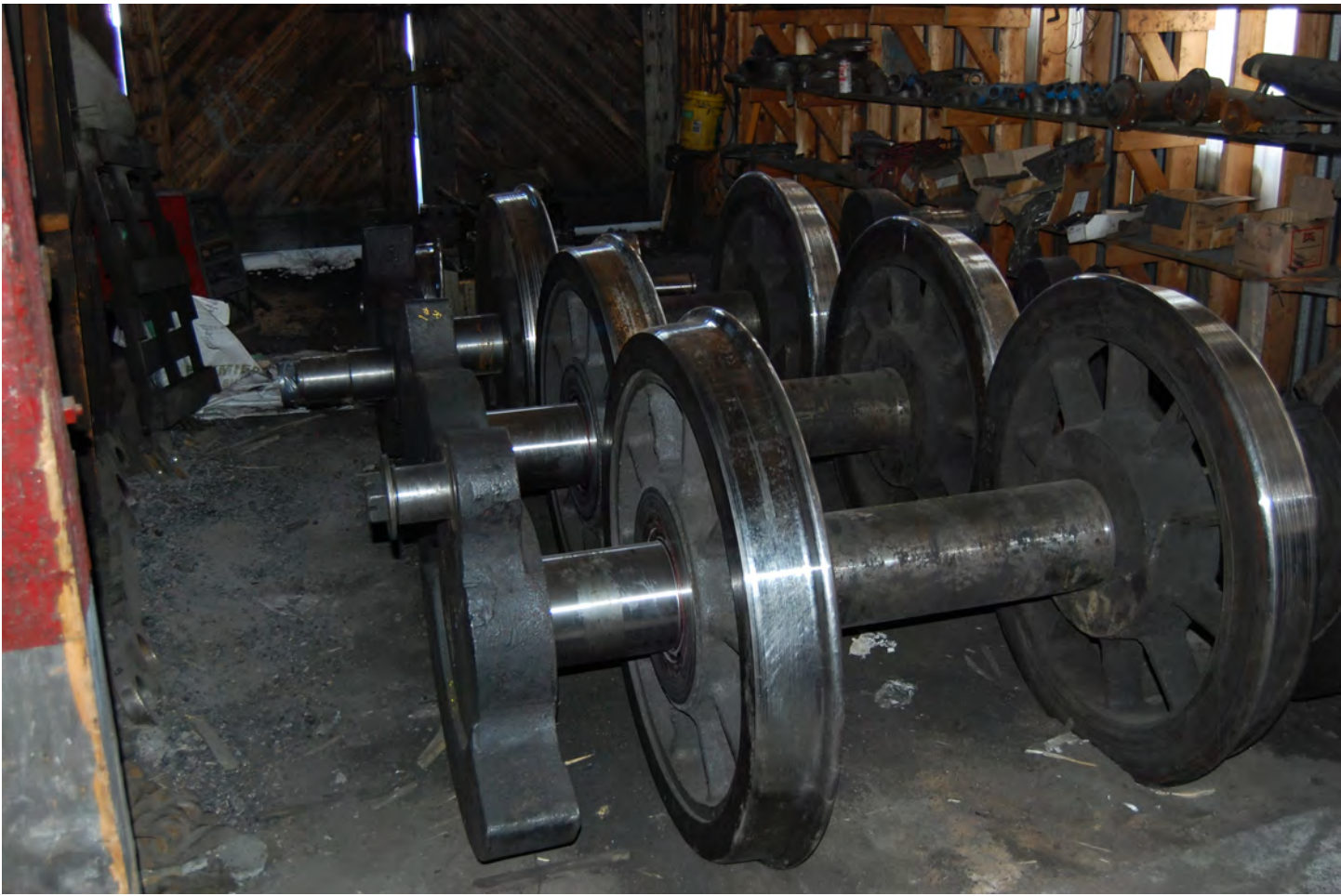
SCENIC RAILROAD  
NATIONAL HISTORIC LANDMARK

CHAMA, NM

**C & T S RR**  
**Capital Improvement Program**

**Locomotives**

- Five active Steam Locomotives.
- Complete “tear down” inspection required every 1472 steam days.
- Boilers rebuild every 9 years.
- Running gear rebuilt every 5 years.
- Maintenance mandated by Federal Regulations.
- Program must be continuously maintained.





## **C & T S RR**

### **Capital Improvement Program**

#### **Track Upgrade**

- 64 miles Chama to Antonito.
- Entire railroad in poor condition at beginning of the program.
- Comprehensive upgrade now 75% complete.
- No derailments in last two years.
- Maintenance mandated by Federal Regulations.
- Deferred maintenance increases costs.



Cresco Tank 2004  
Poor Drainage and  
Tie Deterioration



Cresco Tank 2011  
Good Ballast and Ties  
Track Surfaced



Milepost 339 - Above Lobato  
Encroaching Vegetation Due  
To Poor Drainage 2004



Milepost 339 - Above Lobato  
Good Ballast  
and Drainage 2010





Lobato Trestle 2010  
Day After Fire  
Showing Fire Damage



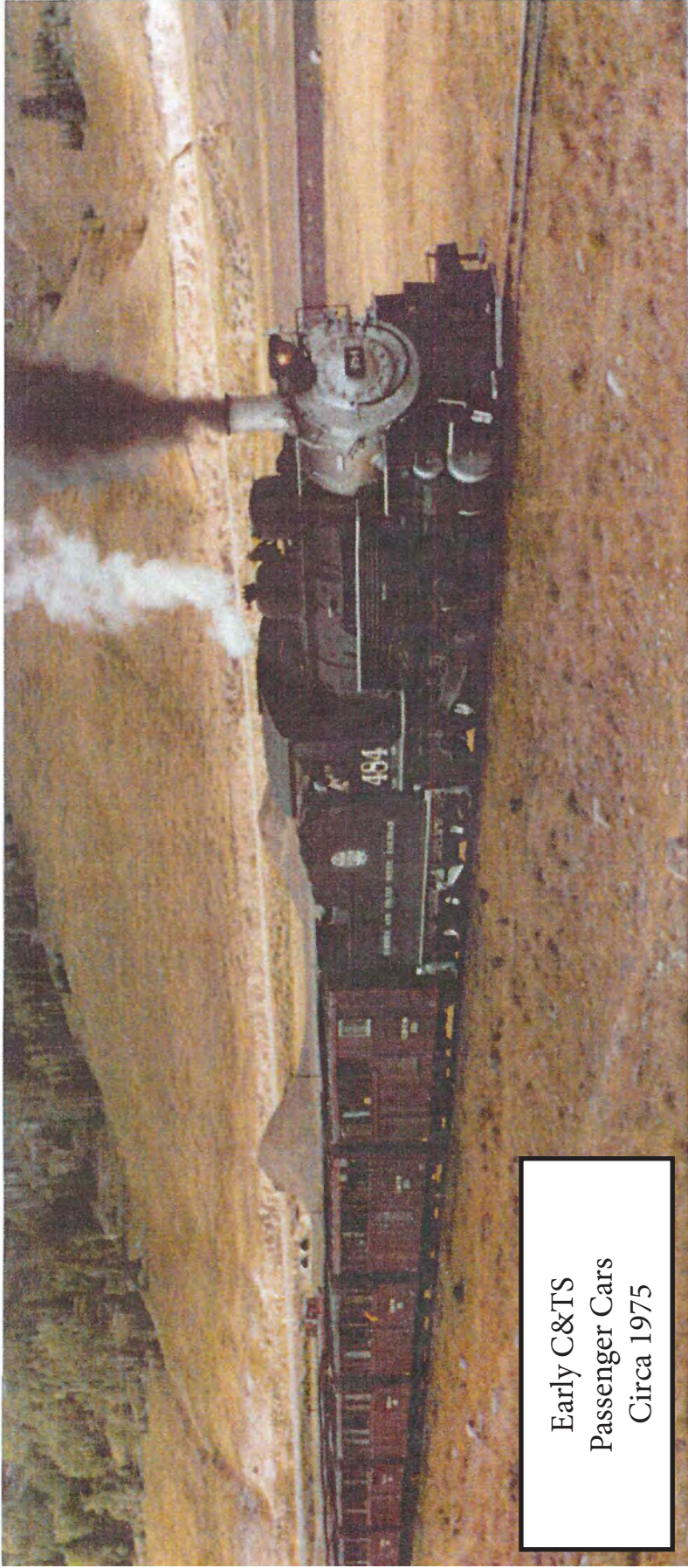
Lobato Trestle 2012  
Rebuild Complete

## **C & T S RR**

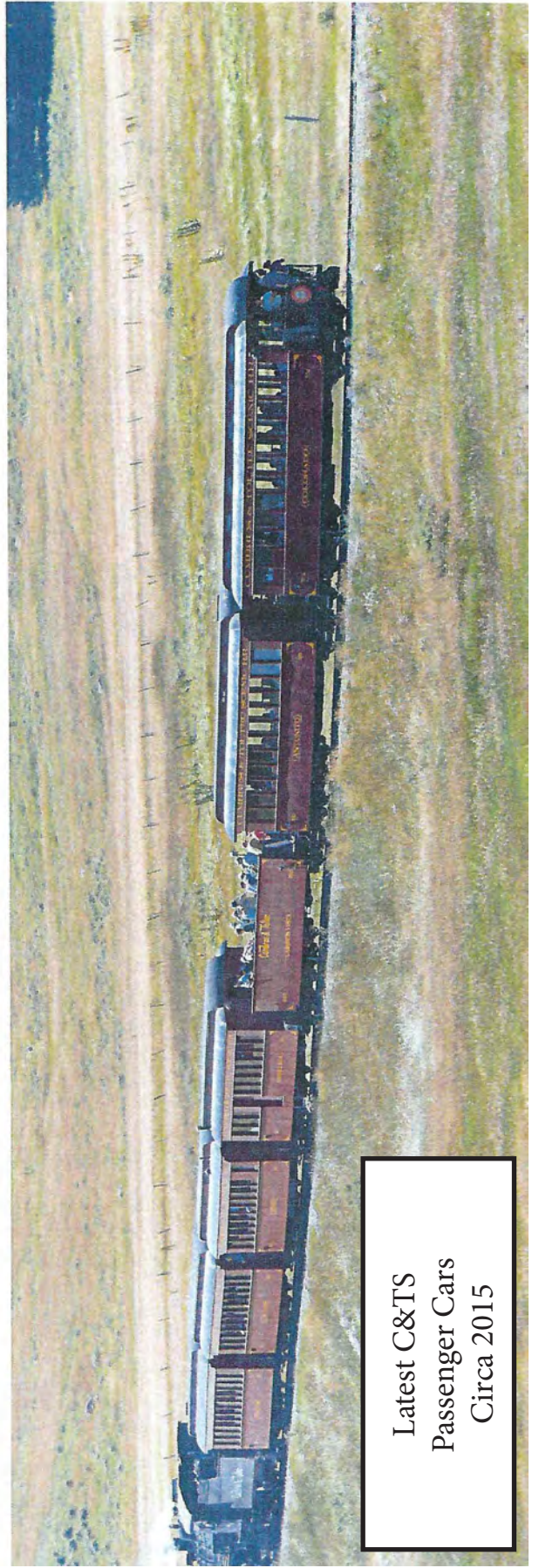
### **Capital Improvement Program**

#### **Passenger Car Program**

- Fleet contains 19 passenger cars.
- All cars are home built. None available at start-up
- Early cars modified wooden box cars.
- First seven passenger cars constructed in 1981 have limited accommodations.
- Next twelve cars constructed 1986-1997 to an improved design and appearance.
- Four cars upgraded to meet demand for premium services. Two more planned.
- Two of the newer cars modified to accommodate ADA customers.
- One-third of fleet are 35 years old and are being rebuilt to current standards.



Early C&TS  
Passenger Cars  
Circa 1975



Latest C&TS  
Passenger Cars  
Circa 2015



Earliest C&TS  
Passenger Cars  
Made of Modified Box Cars



1981 Design Passenger Coach  
Built on Narrow Gague  
Flat Car



1986 Design Passenger Coach  
Improved Passenger  
Accommodations and Appearance



1986 Design Passenger Coach  
with Upgraded Appearance