



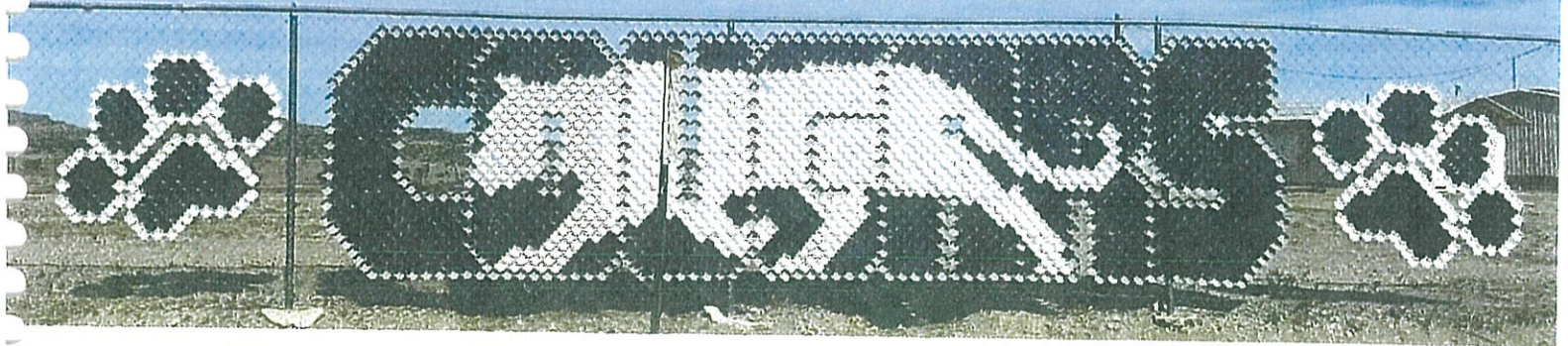
PO Box 5907
Alamo, NM 87825
575-854-2543
www.ansbi.org



ALAMO NAVAJO SCHOOL BOARD INC.

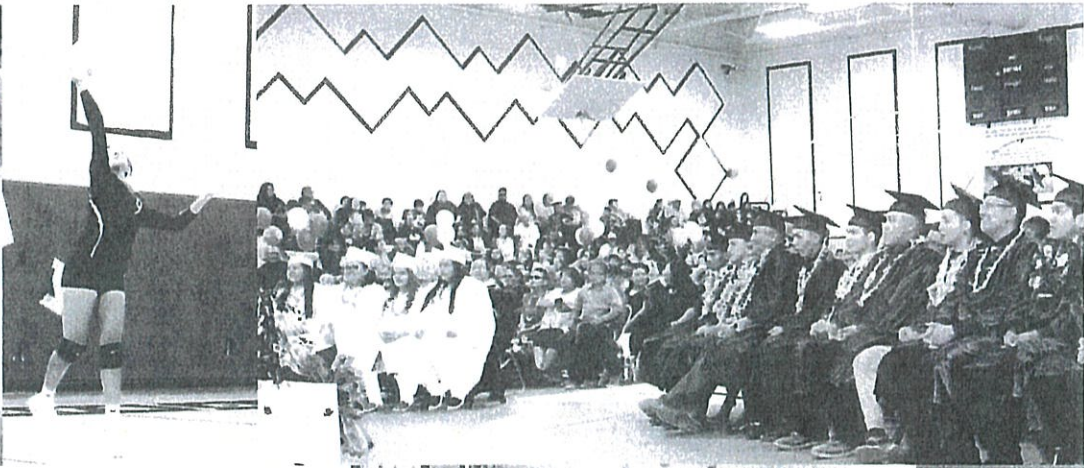
Professional Request for New K-12 Facility

September 2025





PO Box 5907
Alamo, NM 87825
575-854-2543
www.ansbi.org



INTRODUCTION

This is a professional request for a new school facility for the Alamo School System. In this document we will introduce the need for a new facility and explain why it is crucial to our current day-to-day operations, student, staff and faculty welfare and the future of our student population growth and capacity. We have included NCA Architects as part of our team to help us develop this request. We will show from a professional perspective that the current facility conditions at Alamo Navajo School are under-operating and unsafe. We need a facility that will further improve and house our already successful K-12 curriculum.

The Alamo school system was established in the 1970's and the current facilities were built in the early 1980's. Enrollment has fluctuated from mid-250's to mid-350's. There has always been a shortage of classroom space for a K-12 school system. Most K-12 school systems have two gyms for physical education and activities. Lack of classroom space keeps Alamo from implementing trade based programs and expanding on current activities.

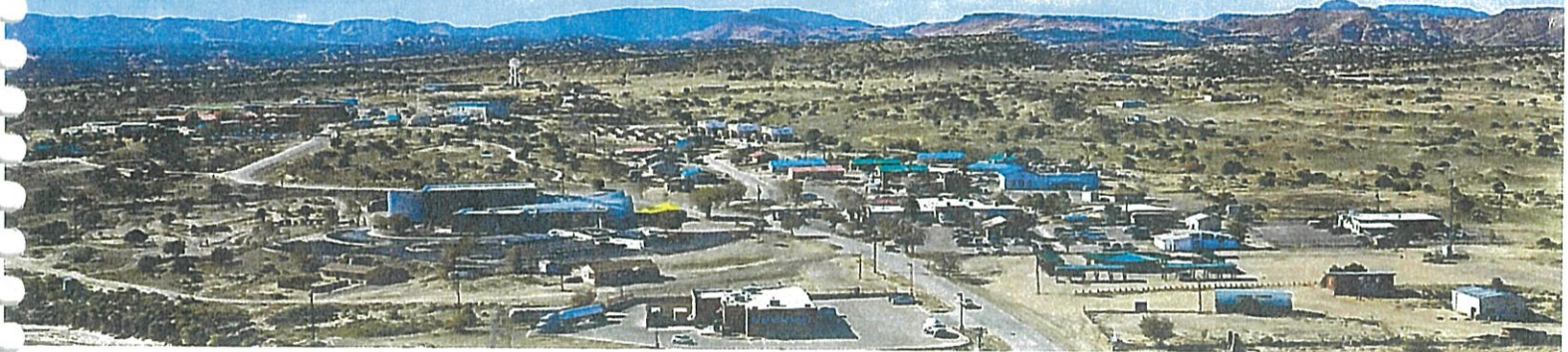
Currently, Alamo serves a little over 300 students, and that stretches the facility capabilities. Classrooms are over-crowded and surpass the occupant load. Due to the insufficiency of square footage some students are forced to attend school at the surrounding school districts. Around 200 students from the Alamo Reservation attend the public school system in Magdalena, New Mexico. The current facilities at Alamo could not possibly serve all of the students living on the reservation and this affects our ability to grow our school system.

On a positive note, even though the state of New Mexico is experiencing a shortage of teachers, we are currently going to start a school year fully staffed, which is an accomplishment compared to past years. For the 2025-2026 school year, the addition of new portables will add needed space for our high school and junior high students. We have successfully added new classes and trade based courses to expand student choices so they receive new experiences that will allow them to make decisions for their futures after graduation.

Maintaining our facilities is very important and we are at a crossroads. We have a great facilities department but there is only so much they can do to existing buildings that are physically disintegrating. We are spending large amounts of our funding just to upkeep our existing facility. An independent Facility Condition Assessment Report & a Safety and Health Inspection report was conducted by the Bureau of Indian Education of our facilities. The results of this report clearly point out that the school needs to be replaced. Basic components/systems such as HVAC, electrical, roof are all outdated and need replaced. The report labeled our facilities "Unsafe or Unhealthful Working Conditions". We can only put band aids on our problems for so long. You will see a more in depth report from our facilities department within the context of this document.

In addition to facility conditions we will also include existing student population and the ability for future student population growth, new school site selection options and will explain how this can all be accomplished within our existing property boundaries.

ALAMO NAVAJO SCHOOL BOARD



CURRENT STUDENT ACCOMMODATION ISSUES:

Kindergarten - 6th Grade (138 Students)

Current K-12 Classrooms: 8

Classrooms Required: 10

Classrooms are being over-populated by an average of 8 students.

7th & 8th Grade (64 Students)

Current 7th & 8th Grade Classrooms: 5

Classrooms Required: 6

The existing classroom spaces are not meant for classroom use, they are undersized and do not meet the standard classroom size requirement.

9th - 12th Grade (84 Students)

Current 9th - 12th Grade Classrooms: 9

Classrooms Required: 12

Need more classrooms for trade-based, CTE and elective offerings.

Student Support Spaces

Cafeteria is being utilized by multiple age groups. This affects the time of the day our students are having lunch due to the space being undersized and over-used.

Gymnasium has a high demand in use due to the lack of outdoor playground space and open field space for physical education. Typically all grades have at-least one physical education course. We have trouble providing courses to all grades due to there only being one gymnasium and no outdoor space for such courses.

Trade-based/CTE designated classrooms are shared or non-existent. We utilize every space to be most-effective but can be hazardous and unsafe for students.

Student Transportation/Bus Parking is unorganized and unsafe for students that ride the bus. Most of our student population relies on bus transportation to and from school.

Security Fencing is in fact all around our campus but not immediately around the school. This is required to keep the safety and well-being of our students.

Administration

There is not a direct connection to administration and students. This complicates day-to-day operations between faculty, staff and students. Students at times have to walk outdoors to access certain resources.

Site Accessibility

ADA pathways and access is violated all across our campus.



Immediate Student Accommodation/Operations Needs:

IT & Infrastructure

Outdated wiring hinders Internet/phone reliability and complicates upgrades. Vendors servicing the bell system, intercom, and fire alarms frequently face costly challenges due to the old infrastructure.

A new facility would allow for **modern, reliable IT systems** designed for long-term use and expansion.

Facility Department

- Current buildings lack adequate space to secure **inventory and high-value equipment**. Harsh weather shortens equipment lifespans, and travel delays make downtime costly.
- **ADA compliance** is a significant issue. Upgrades must bring the entire facility up to code, not just partial fixes.
- The **Transportation facility** is undersized, preventing basic maintenance without delays and creating challenges that affect student safety and reliability of bus services.

Transportation Facility

Our buses are an integral part to the success of student attendance. 75% of our student population relies on bus transportation. Having a facility in which we can park and maintain our buses is required.

Community Services/Adult Education

As part of the new K-12 facility proposed for the Alamo Navajo Community, with the recommended inclusion of **Career Technical Education (CTE)** services to prepare Alamo High School students for post-secondary education and trade-based learning while in high school through dual credit programs.

- Training labs will also be available for adults in the Alamo community for skill training and certification.
- Ideally, these CTE classrooms will serve as a foundation for a post-secondary satellite college campus, in partnership with higher education institutions, located on the Alamo School Campus.

Improved Parking & Roadwork

Designated staff, student and public parking needs to be established for the safety of all. Roadwork to safely circulate the campus both by foot or vehicle. The location of the existing school can serve as future required parking, athletic play field, playgrounds and more to accommodate all these needs.

Additional Playground Space And Equipment

This is the only public playground facilities for the whole reservation.





Alamo Navajo School Board, Inc.

PO Box 5907
 Alamo, NM 87825
 P: 575.854.2543

ESTABLISHED IN 1979
K-12 Educational Program

- President:**
Rick J. Padilla
- Vice President:**
Raymond Apachito Jr.
- Members:**
Marie Pino
Carol Vincente
Cecil Abeyta
- Superintendent:**
Bill Green
- Facilities Manager:**
Obed Torres

Alamo currently has a population of 307 students.

Grade	# of Students	Projected Student Growth per Grade Level
Kindergarten	22 Students	33%
1st Grade	17 Students	42%
2nd Grade	30 Students	24%
3rd Grade	20 Students	36%
4th Grade	24 Students	30%
5th Grade	25 Students	29%
6th Grade	26 Students	28%
7th Grade	38 Students	19%
8th Grade	24 Students	20%
9th Grade	21 Students	34%
10th Grade	20 Students	36%
11th Grade	19 Students	38%
12th Grade	19 Students	38%

The projected student growth per grade level percentage is calculated from an overall projected growth of 25% (+/- 93 Students) to the current student population of 307.

If we had the space and were able to improve our class offerings, we could realistically look at a growth of 25% to 400 students or better. The students are here; some choose to attend the public school system due to better state funding and facilities.

The Alamo Navajo Community is patriotic and passionate about our school. Our school facilities do not only serve our students but our community as well. Our school is the focal point of our community's gatherings, events and resources.

The Alamo Navajo Community School is facing significant facility-related challenges due to the age and condition of its main building, which is now over 40 years old. Many of the building's systems and structural components have surpassed their intended lifespan and are beginning to pose serious life safety risks to students, staff, and visitors.

One of the most pressing concerns is the outdated fire alarm system. The system is no longer supported by any vendors, making it nearly impossible to maintain or repair. In the event of an emergency, this creates a potentially dangerous delay in response and evacuation efforts. Additionally, the school roof continues to suffer from persistent leaks, contributing to moisture buildup and the spread of mold-like substances throughout the facility—conditions that compromise both health and safety.

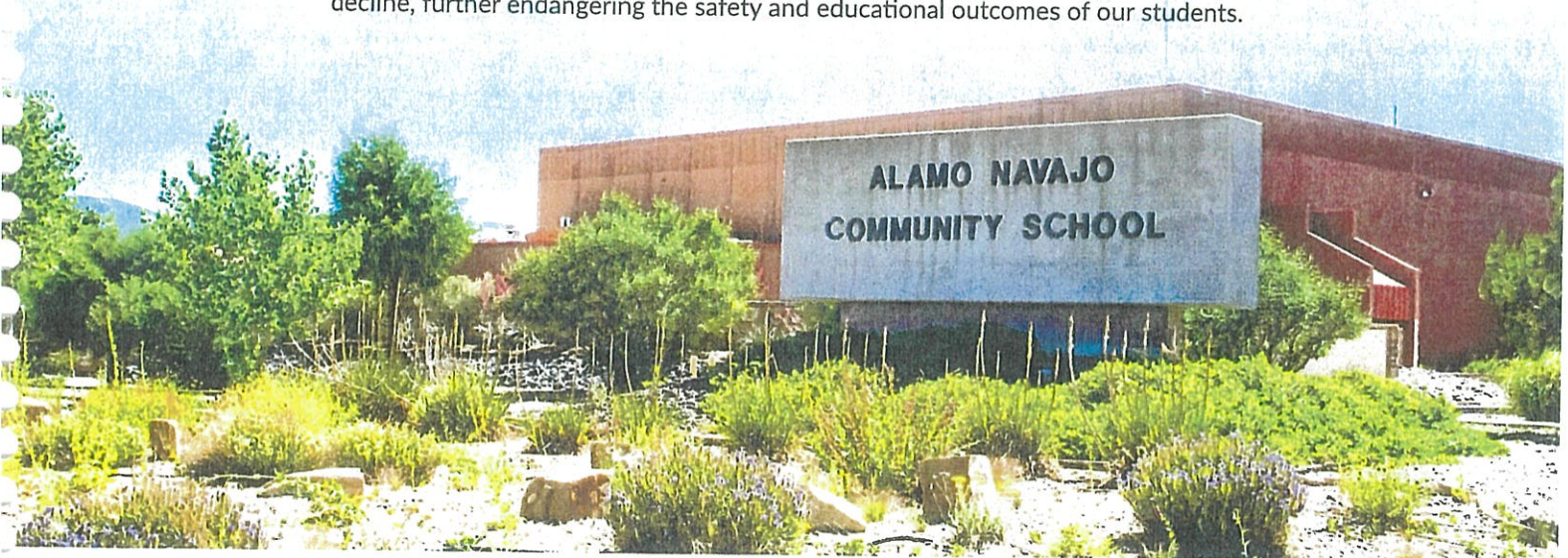
Recently, a minor explosion occurred in the boiler room due to the deteriorating condition of the aging boiler equipment. This incident could have resulted in serious injury to maintenance personnel or nearby staff, highlighting the urgent need for system replacement. Structural concerns have also escalated. Foundation shifting has led to large cracks in multiple sections of the school, raising serious questions about the building's overall integrity and stability.

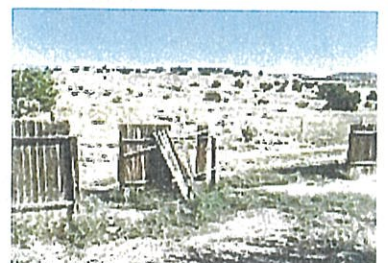
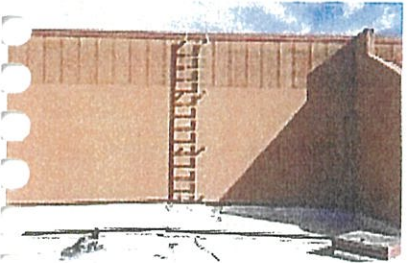
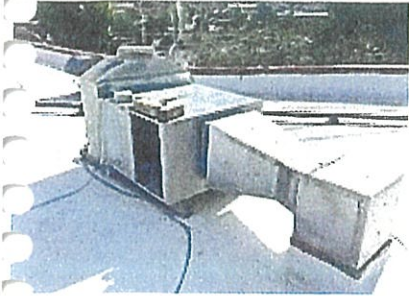
The electrical infrastructure is another major concern. It is outdated and insufficient to meet the demands of modern technology, directly impacting students' access to essential learning tools and resources. In some cases, the electrical system has triggered small fires due to overload and degradation. These issues not only hinder educational progress but also threaten the safety of the entire school community.

Heating and cooling are also inadequate. The school relies on aging evaporative coolers (swamp coolers), which consume large quantities of water—a critically limited resource in our area—and provide minimal temperature control. As a result, classroom environments are often uncomfortable, making it difficult for students to focus and engage in learning.

Our Maximo maintenance system contains numerous unresolved tickets for repairs and improvements, many of which have gone unaddressed due to a lack of funding. Each year, we complete inspections that identify a growing list of life safety issues, and yet year after year, no substantial corrective action or funding is provided. Multiple reports have been submitted to the Bureau of Indian Affairs (BIA) by different personnel, yet the response has consistently been limited.

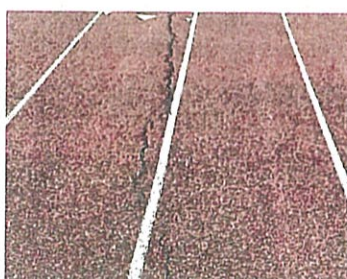
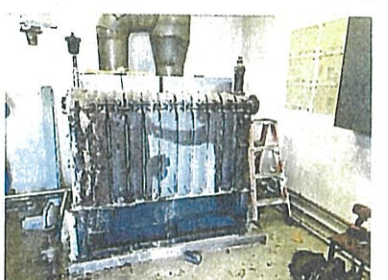
This report provides just a brief overview of the critical facility needs facing Alamo Navajo Community School. The scope of required improvements would necessitate **millions of dollars** in repairs, replacements, and upgrades. Without intervention and proper funding, the school will continue to decline, further endangering the safety and educational outcomes of our students.





CAMPUS WIDE DEFICIENCIES

All images included show first hand the life safety hazards our students and staff are exposed to. Our facilities department has in fact fixed and improved upon some of these deficiencies. The problems arise on a day to day basis and have become very costly. Certain deficiencies are out of our budget capabilities.





PO Box 5907
Alamo, NM 87825
575-854-2543
www.ansbi.org



NEW SCHOOL SITE SELECTION

THE PROPOSED SITE

predominant location, secure-able size, gateway opportunities, excellent drainage, relatively flat surface, out of the way of school operations during construction, close proximity to utilities and visual opportunities.

